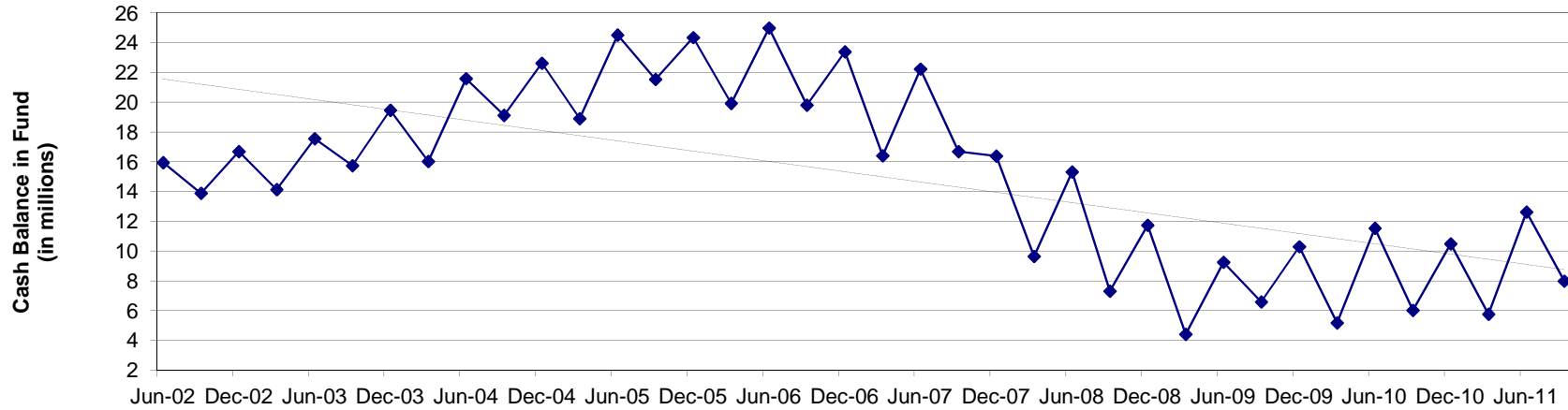
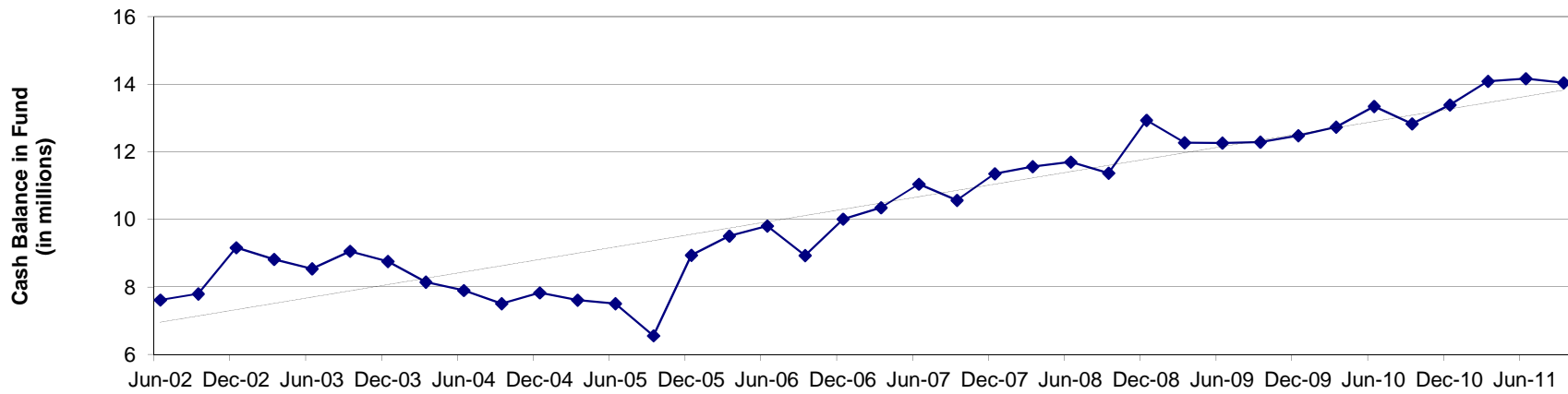


CASH BALANCES BY FUND

General Fund Fund 1

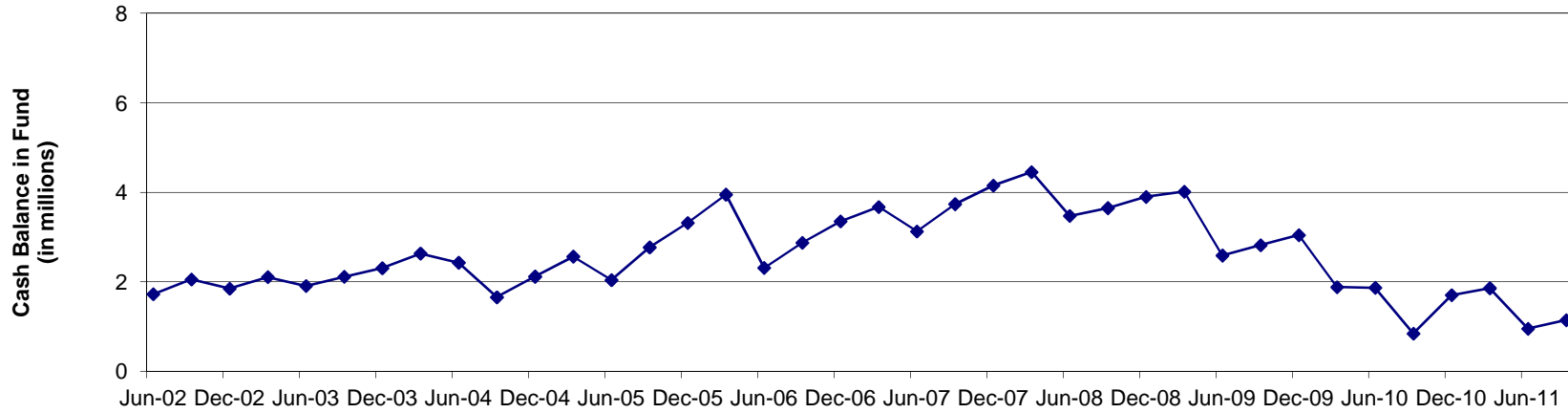


Administrative Services Fund 507

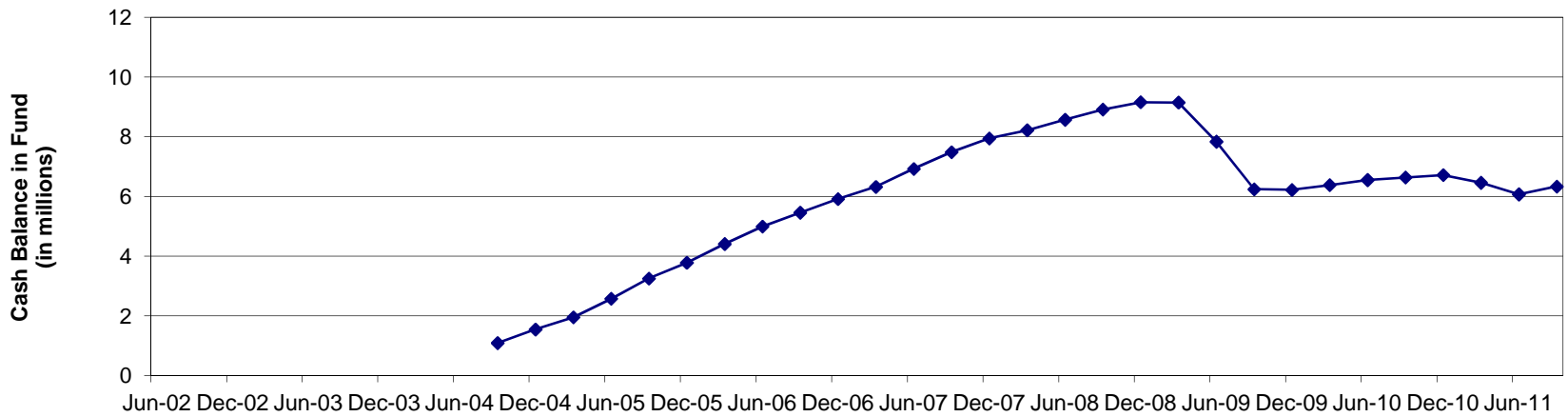


CASH BALANCES BY FUND

REET I Fund 326

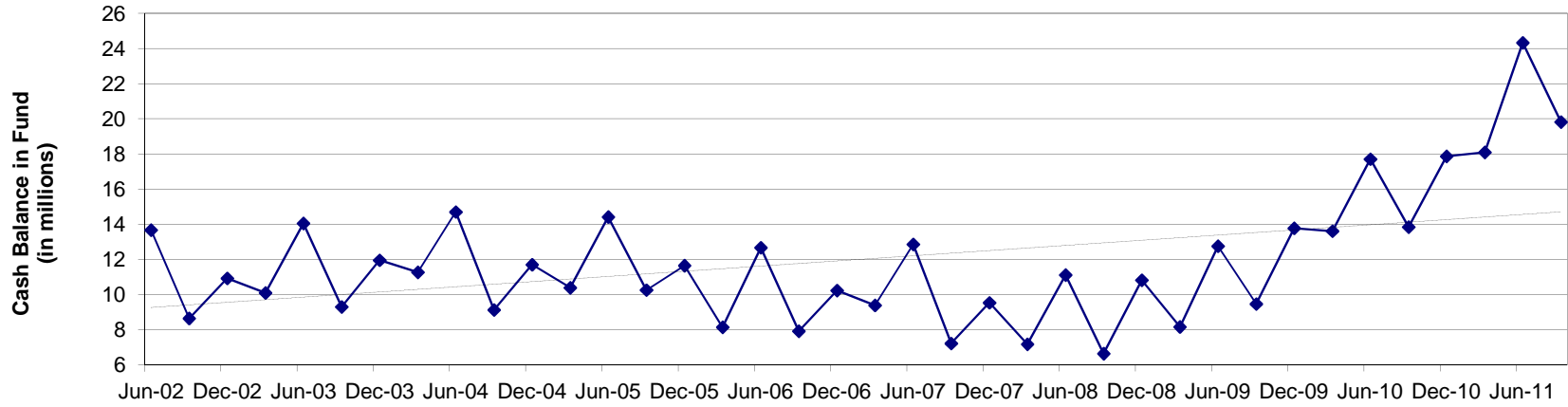


REET II Fund 324

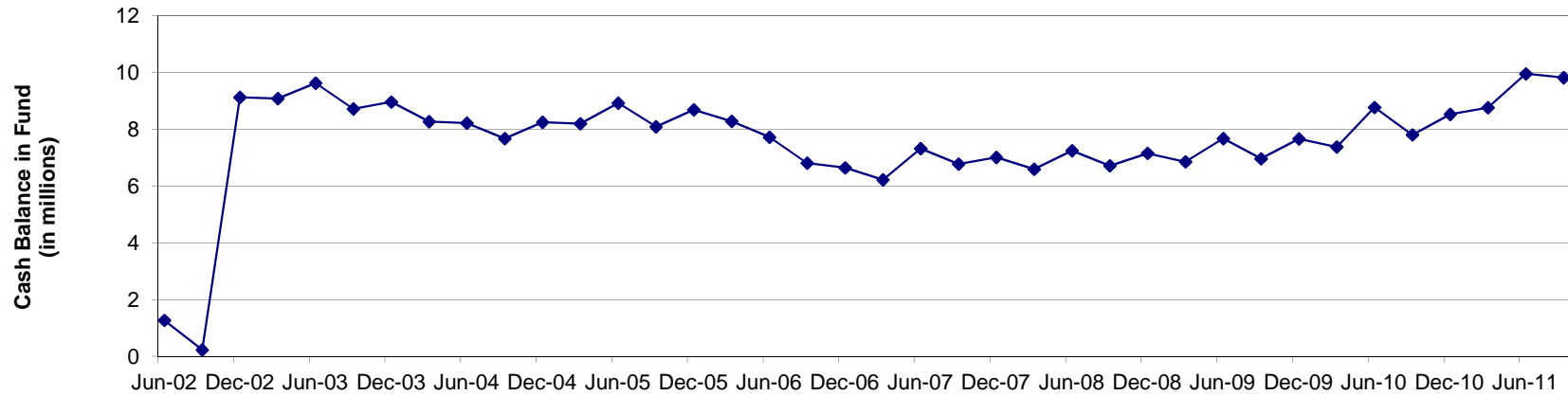


CASH BALANCES BY FUND

County Road Fund 108

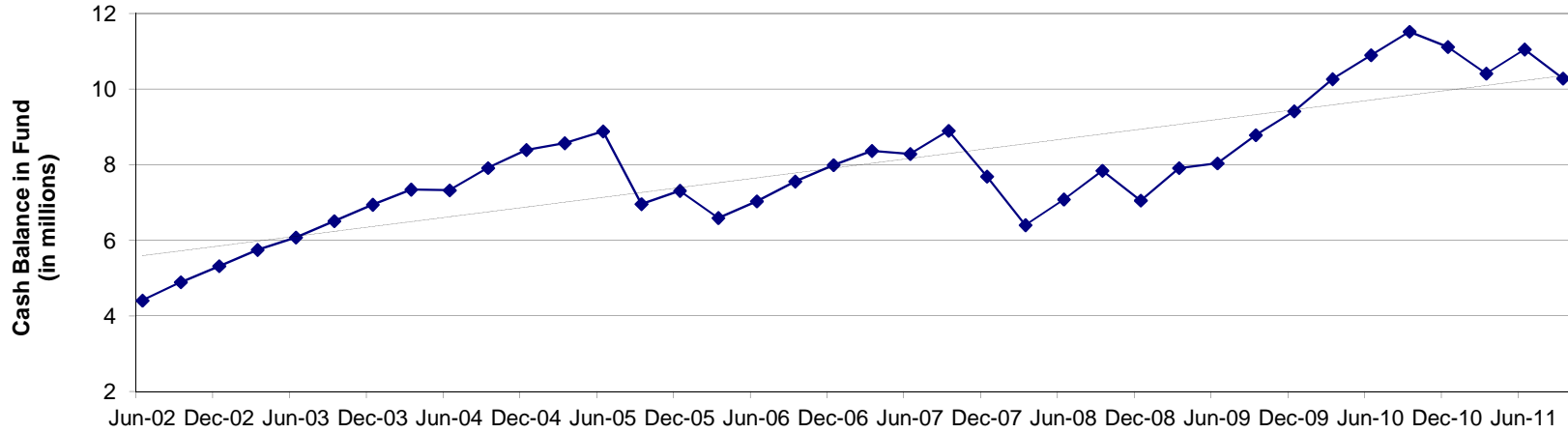


Flood Control Fund 169

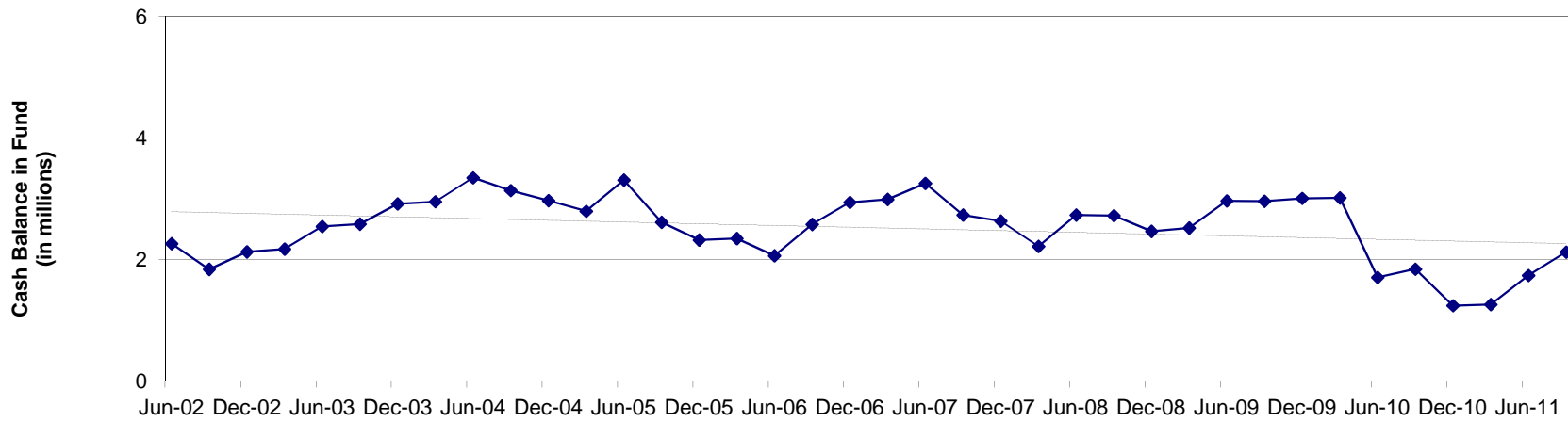


CASH BALANCES BY FUND

Public Utility Improvement Fund 332



Conservation Futures Fund 175

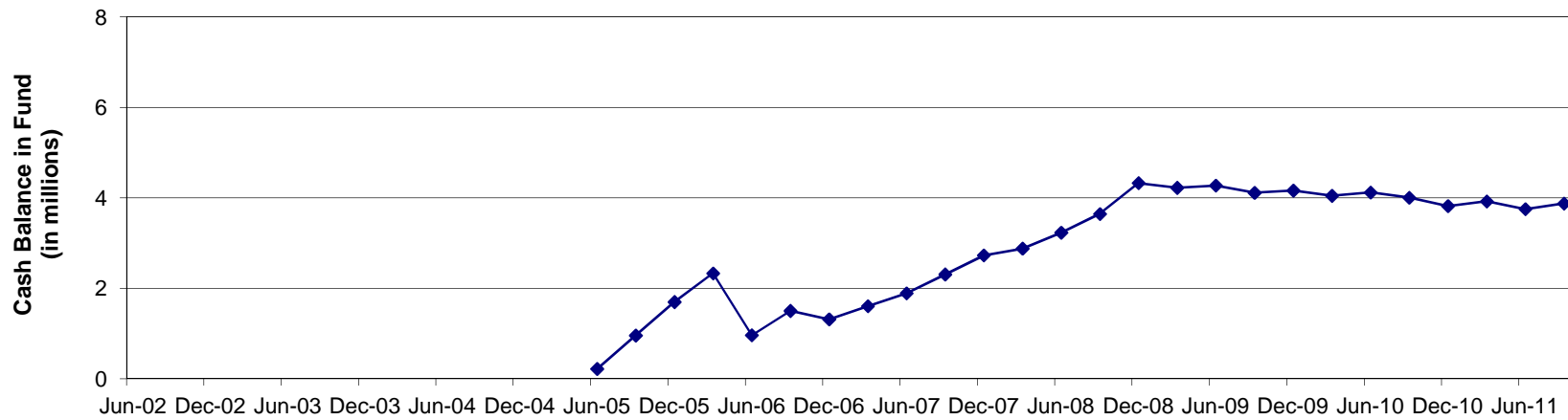


CASH BALANCES BY FUND

Jail Improvement Fund 337



WC Jail Fund 118

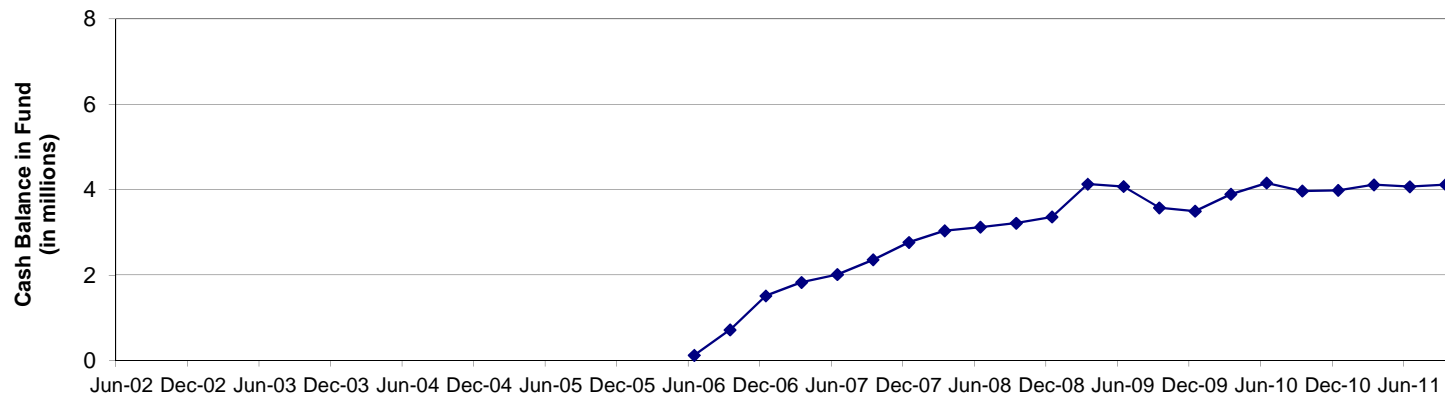


CASH BALANCES BY FUND

Chemical Dependency/Mental Health Fund 124

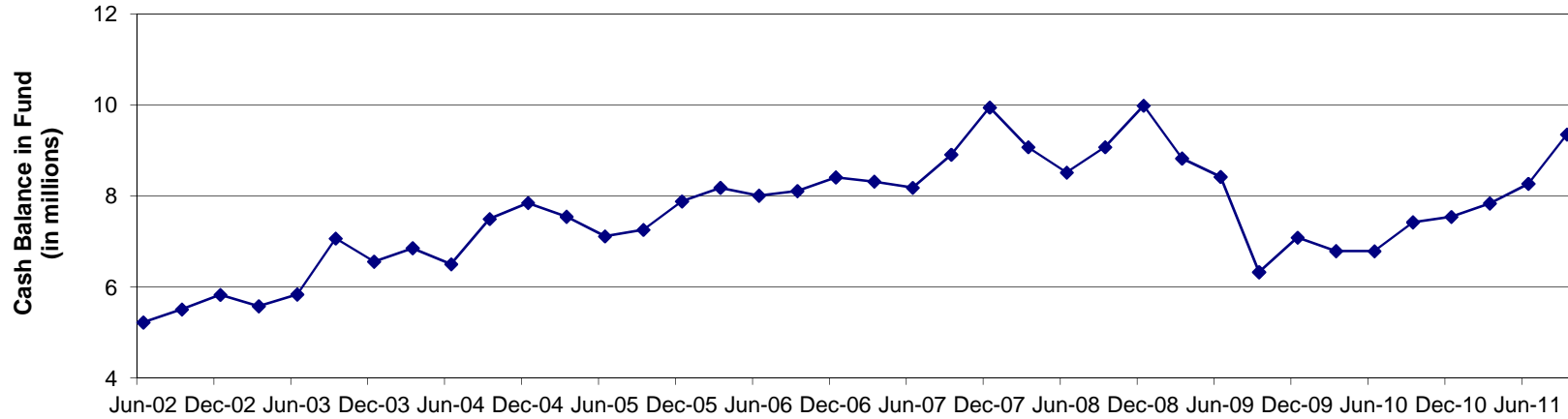


Countywide EMS Fund 130

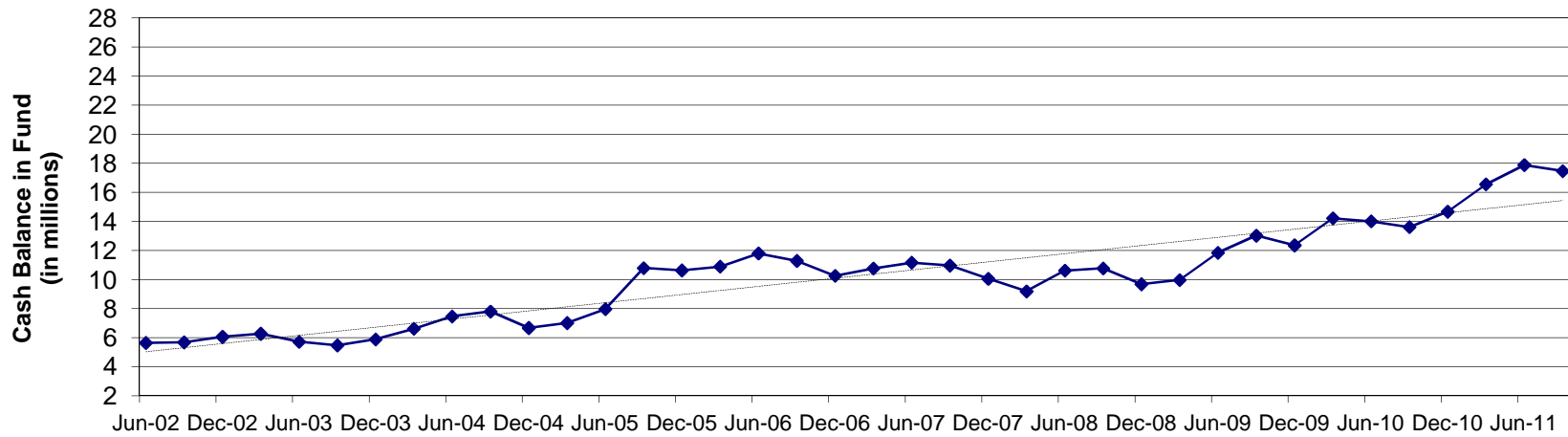


CASH BALANCES BY FUND

ER&R Fund 501



All Remaining County Funds



CASH BALANCES BY FUND

FUND	12/31/01	12/31/02	12/31/03	12/31/04	12/31/05	12/31/06	12/31/07	12/31/08	12/31/09	12/31/10	9/30/11	\$ growth 12/31/01 to 9/30/11
1 Current Expense	18,815,078	16,690,120	19,460,792	22,623,991	24,343,432	23,392,251	16,387,887	11,733,433	10,295,471	10,485,880	7,983,964	(10,831,114)
108 County Road	10,990,125	10,926,810	11,957,731	11,707,853	11,649,943	10,233,428	9,541,155	10,824,077	13,778,753	17,863,727	19,812,621	8,822,496
118 WC Jail					1,700,751	1,317,405	2,730,337	4,328,638	4,164,118	3,822,333	3,878,747	3,878,747
337 Jail Improvement										3,006,599	3,112,184	3,112,184
130 Countywide EMS						1,516,384	2,768,100	3,363,803	3,498,582	3,987,076	4,118,697	4,118,697
169 Flood Control	10,194,831	9,124,789	8,962,003	8,252,727	8,690,177	6,644,370	7,008,809	7,156,447	7,666,114	8,527,639	9,822,655	(372,176)
332 Public Util Imp	3,528,320	5,319,084	6,940,613	8,389,450	7,312,990	7,993,196	7,690,369	7,053,146	9,416,489	11,118,023	10,283,982	6,755,662
507 Admin Services	7,011,939	9,162,539	8,754,309	7,826,753	8,938,808	10,008,860	11,351,554	12,928,342	12,478,867	13,382,323	14,044,026	7,032,087
501 ER&R	5,443,369	5,828,803	6,556,840	7,843,603	7,881,201	8,407,385	9,942,588	9,981,786	7,085,386	7,540,869	9,348,673	3,905,304
175 Conserv Futures	1,856,375	2,127,389	2,917,424	2,971,305	2,321,455	2,941,088	2,633,410	2,463,748	3,007,202	1,242,671	2,122,183	265,808
137 LEOFF I Healthcare								3,500,000	3,500,000	2,070,909	1,011,576	787,475
124 Chml Dpndcy/Mental Hlth										2,166,105	4,158,429	5,123,041
324 REET II				1,547,372	3,777,921	5,914,410	7,943,719	9,153,226	6,220,627	6,713,238	6,332,076	6,332,076
326 REET I	1,346,676	1,849,396	2,307,204	2,119,105	3,319,426	3,351,294	4,152,723	3,899,274	3,046,494	1,704,602	1,146,841	(199,835)
Other County Funds	4,946,680	6,065,205	5,896,325	6,677,199	10,638,896	10,266,647	10,064,655	9,688,103	12,361,226	14,677,903	17,472,793	12,526,113
ALL FUNDS TOTAL	64,133,393	67,094,135	73,753,241	79,959,358	90,575,000	91,986,716	95,715,305	96,074,025	97,256,345	109,242,890	115,389,956	51,256,564
Other County Funds												
109 Election Reserve	31,344	172,447	90,323	66,941	597,856	110,999	359,508	222,140	152,938	82,605	71,481	40,137
114 Veteran's Relief	87,476	129,739	134,930	179,868	249,514	335,473	458,703	621,249	750,701	881,928	840,469	752,993
115 Tax Refund	1,187	13,331	26,178	28,910	31,392	59	64	63	64	71	81	(1,106)
116 Treasurer's O&M	114,962	118,702	143,928	207,222	193,660	195,196	249,024	198,581	248,176	305,108	305,131	190,169
117 Water Resources	765,560	584,380	105,507	499,551	479,506	316,195	558,797	457,091	-	-	-	(765,560)
119 REET Technology	0	0	0	0	23,228	69,080	107,927	136,934	163,345	179,865	-	-
121 Low Income Hsg	0	179,772	583,190	911,133	1,069,924	1,057,674	834,087	353,344	379,284	336,641	108,084	108,084
122 Homeless Housing	0	0	0	0	149,285	448,864	858,994	1,080,947	1,254,964	1,059,066	890,613	890,613
123 Stormwater									845,307	254,862	346,155	346,155
135 Trial Court Improvement	0	0	0	0	0	20,085	23,708	15,892	63,338	73,936	110,762	110,762
140 Solid Waste	165,597	1,298,956	1,347,945	1,391,105	1,387,633	1,413,403	1,350,817	1,335,832	1,316,183	1,270,666	1,404,465	1,238,868
141 Convention Center	232,825	248,631	253,902	263,677	263,380	315,202	333,067	822,619	822,779	1,021,566	1,184,836	952,011
142 Victim Witness Assist	87,462	85,270	95,697	91,115	82,599	76,431	89,386	90,778	62,418	58,129	99,334	11,872
143 EMS Comm System	0	0	0	0	0	26,419	81,940	64,277	33,504	34,104	-	-
148 CERB	61	61	61	61	61	-	-	-	-	-	-	(61)
149 Emergency Contingency	5,250	5,250	5,250	5,250	5,250	5,250	5,250	5,250	5,250	5,250	5,250	-
150 Drug Task Force	6,170	6,170	6,170	6,170	16,170	16,170	16,170	16,170	16,170	16,170	16,170	10,000
151 Community Dev	18,566	23,566	18,566	13,566	23,077	18,077	26,237	21,237	16,237	11,237	11,237	(7,329)
152 WC Imminent Threat	3	3	3	3	3	3	3	3	3	3	3	0
154-159 RID #1-7	50,114	50,673	50,479	52,094	53,455	54,177	52,015	53,246	50,155	46,698	41,505	(8,609)
165 WC Drug Fund	666,598	600,566	1,133,047	1,025,401	1,249,492	1,201,963	905,068	762,720	577,842	212,266	324,401	(342,197)
166 Auditor's O&M	384,927	504,202	655,378	542,133	483,027	462,168	544,482	508,376	617,128	533,193	556,584	171,657
167 Emergency Management	136,072	171,869	108,253	59,053	62,003	137,934	113,511	76,766	88,657	2,460	149,824	13,752
170 Pt Roberts Fuel Tax	51,800	70,551	97,698	132,976	176,665	218,333	260,541	311,786	347,660	402,598	458,876	407,076
180 Lake Management	27,116	24,080	19,588	16,169	12,202	6,057	1,878	1,878	-	-	-	(27,116)
212-245 Debt Service	547,000	245,227	141,527	151,377	206,782	210,454	220,491	230,059	221,412	167,936	695,105	148,105
327 Courthouse Expansion	43	43	43	43	43	43	43	43	43	43	43	(0)
330 County Parks Improv	9,373	32,869	35,201	37,350	109,234	134,481	129,440	127,444	130,599	1,653,774	1,669,686	1,660,313
331 Civic Center Bldg	769,074	769,074	34,643	32,211	32,211	32,211	32,211	32,211	32,211	32,211	1,436,247	667,173
333 Jail Constr Project	0	0	0	0	2,547,514	699,023	168,542	169,824	-	-	-	-
334 E Whatcom Reg Res Ctr	0	0	0	0	0	-	-	89,892	289,063	439,244	821,656	821,656
335 Yew St Rd Construction	0	0	0	0	0	-	-	-	1,345,154	906,021	931,746	931,746
336 Lincoln Rd Construction										1,353,284	881,627	881,627
402 WC Investment Pool	11,153	11,936	18,519	75,109	150,229	178,699	193,695	238,615	240,242	291,530	246,354	235,200
444 Ferry System	0	0	0	0	0	1,458,226	1,121,603	656,184	424,343	587,911	1,128,642	1,128,642
503 WC Suppl Retirement	350,038	241,122	203,193	203,193	203,193	203,193	203,193	203,193	203,193	-	-	(350,038)
16921-16925 Fld Sub-Zones	426,908	476,715	587,106	685,519	780,308	845,104	764,260	913,459	1,662,862	2,457,527	2,736,427	2,309,518
Other County Funds Total	4,946,680	6,065,205	5,896,325	6,677,199	10,638,896	10,266,647	10,064,655	9,688,103	12,361,226	14,677,903	17,472,793	12,526,113