

Disposal of Toxics

360-380-4640
 3505 Airport Drive, Bellingham
 (one block west of the airport entrance)
 Open Monday — Friday 9 am - 4 pm
 First Saturday of every month 9 am - 4 pm

information).

Take remaining hazardous materials, including mercury switches, roofing tar, construction adhesives, caulks, resins, fluorescent tubes, paint-stripper residues, rags contaminated with solvents, and lead based-paint chips to Disposal of Toxics (call first for detailed

OTHER

Deliver to Disposal of Toxics (see information below).

OIL-BASED PAINTS & STAINS, STRIPPERS, PRESERVATIVES, OTHER STAINS & VARNISHES

IN THE GARBAGE.

the paint. Once it is non-flowable, it can be placed in the garage with the lid off. NO LIQUID PAINT cat box litter (or sawdust, ashes, concrete, or "paint hardener" available where paint is sold) to absorb UNSABLE LATEX (SOLID, PREVIOUSLY FROZEN, RUSTY, NEAR EMPTY): Add equal amount of

organization that sells usable latex paint (2309 Meridian St. - 15 gallon limit). Call first: 360-647-5921. Toxics facility (directions below) or the RE Store for reuse or recycling. The RE Store is a non-profit

USABLE LATEX (NEVER FROZEN, STILL FLOWABLE):

Deliver usable products to the Disposal of Toxics facility (directions below).

Reuse as much as possible. After pouring off clear thinner into a clean, labeled container for reuse, let the remaining solids dry out completely. Dispose of unusable liquid or solids at the Disposal of

PAINT THINNER & TURPENTINE

are some recommendations from Whatcom County's Disposal of Toxics Program:

Disposal of oil-based paint, paint thinner, mercury switches, and related hazardous construction materials in the garage is not safe for humans or the environment and in some cases is illegal. Here

are some recommendations from Whatcom County's Disposal of Toxics Program:

Hazardous Waste Products

Reuse and Salvage Facilities

RE Store

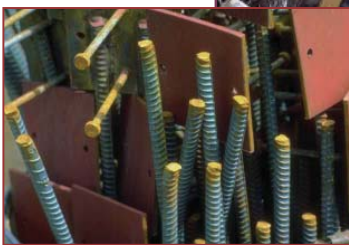
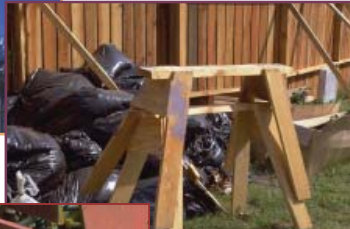
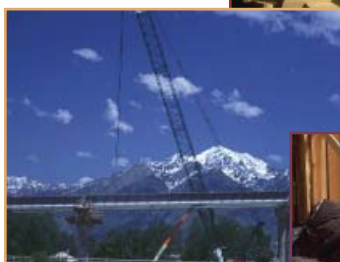
360-647-5921
 Non-profit with licensed salvage and demolition crew. Accepts a wide range of used building materials for resale to the public. Donated material is tax-deductible. Pick-up and removal available.

Robinson Recycled Building Materials

360-676-8890
 Demolition contractor salvages and accepts selected reusable materials from demolition sites.

Whatcom County Public Works
 Solid Waste Division

Construction Waste Recycling



QUESTIONS?

Call the Recycling Hotline
 360-676-5723

Whatcom County Public Works Solid Waste Division

322 N. Commercial, Suite #220
 Bellingham, WA 98225
 Phone: 360-676-7695
 Recycling Hotline: 360-676-5723
www.whatcomcounty.us/publicworks/solidwaste



Printed on 100% recycled-content paper.



REMEMBER: It is illegal to burn, bury, or dump construction/demolition waste. Burying or dumping can pollute ground water and surface water (WCC 8.28).

When transporting construction waste, always secure and cover your load!

The listings in this brochure provide contact information for most construction recycling services in the Whatcom County area. It is recommended to call first to verify pricing, material, and quantity information.

Recycling and reusing construction materials is an essential part of reducing the amount of resources that end up in landfills.

Construction Waste Recycling Guide

Take Action Before You Start

- 1. Materials**
 - Ask your contractor what materials will be used and which ones are recyclable.
 - Can any of the materials be purchased from reuse or salvage facilities such as the RE Store?
- 2. Recycling**
 - Hire a hauler, ask your garbage collection company about recycling opportunities, or haul it yourself to a legally permitted disposal site, drop box, or facility.
- 3. Space/Set-up**
 - Set up enough space ahead of time for recycling.
 - Find out if the recyclables can be commingled or if they need to be separated (depends on how/what you will recycle).

Need Help?
 The Whatcom County Health Department offers free consulting and technical assistance regarding reuse, recycling, or disposal of construction and demolition debris. For assistance call 360-676-6724.

If you would like more information on ways to reduce waste during construction, or have questions, call the Recycling Hotline.

**Questions? Call the Recycling Hotline
 360-676-5723**

*Department of Ecology Annual Disposal by County Report.
 **California Integrated Waste Management Board. Targeted Statewide Waste Characterization Study: Detailed Characterization of Construction and Demolition Waste—Publication #341-06-007, June 2006, by Cascadia Consulting Group.

CONSTRUCTION RECYCLING & REUSE OPTIONS

Call first for pricing information!

R = Recycled F = For Fuel D = Disposed	ASPHALT/ CONCRETE (PAVEMENT)	CARDBOARD/OCC	PLATE GLASS	LAND CLEARING DEBRIS/BRANCHES	METAL	PALLETS	PAPER	PLASTIC SHEETING/FILM	POLYURETHANE FOAM	UNPAINTED ROOFING MATERIALS	SHEETROCK/DRYWALL	TILE/ PORCELAIN	CLEAN TREATED WOOD	WOOD SCRAP
AGGREGATES WEST 360-966-3641 9151 Van Buren Road, Everson	R													
BARKER'S WOODCHIPPING 360-734-7814 Call for appointment				R										
BLAINE BAY REFUSE (operated by SSC) 360-332-5443, 360-734-3490 Pick-up services in NW county	R	R	D	R	R	R	R	R	D	D	R	D	D	R
CITY ORGANICS 360-671-YARD Pick-up service				R										
NOOKSACK VALLEY DISPOSAL 360-354-3400 250 Birch Bay-Lynden Road Pick-up available	D	R	D	R	R	R	R	D	D	D	D	D	D	R
NORTHWEST CHIP & GRIND 360-676-9569 4243 Hannegan Rd, Bellingham On-site & pick-up available				R										F
NORTHWEST RECYCLING 360-733-0100 1419 C Street, Bellingham Pick-up NOT available		R			R		R							
NORTHWEST RECYCLING WAREHOUSE 360-734-2250 1515 Kentucky Street		R					R							
PERRY PALLET 360-366-5239 7200 Delta Line Road, Ferndale Pick-up available						R								R
RECYCLING & DISPOSAL SERVICES 360-384-8011 4916 LaBounty Road, Ferndale	R/D	R	D	R/F	R	F	R	D		D	D	R/D	D	F
REGIONAL DISPOSAL CO. 360-384-1057 1542 Slater Road, Ferndale	D	D	D	R	R	D	D	D	D	D	D	D	D	D
SANITARY SERVICE COMPANY 360-734-3490 Roeder & F Street, Bellingham Pick-up available	R	R	D	R	R	R	R	R	D	D	R	D	D	R
SKAGIT RIVER STEEL & RECYCLING 800-869-7097 1265 S. Anacortes St. Burlington		R			R		R	R						
S & W ROCK PRODUCTS 360-354-4936 774 Meadowlark Lane, Lynden				R										
T&T RECOVERY 360-671-0722 Drop-box pick-up services	R	R		R	R	R	R	R			R		D	R
GRANITE CONSTRUCTION 360-676-2450 3876 Hannegan Road	R													
Z RECYCLERS 360-734-5986 6129 Guide Meridian					R									

Cando Recycling & Disposal: 360-945-2636
Drop-off service in the Point Roberts area only. Some drop-off recycling available.

