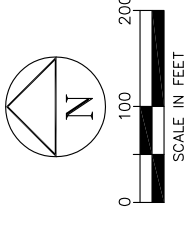


SEAMHMOO WEST PLANNED UNIT DEVELOPMENT

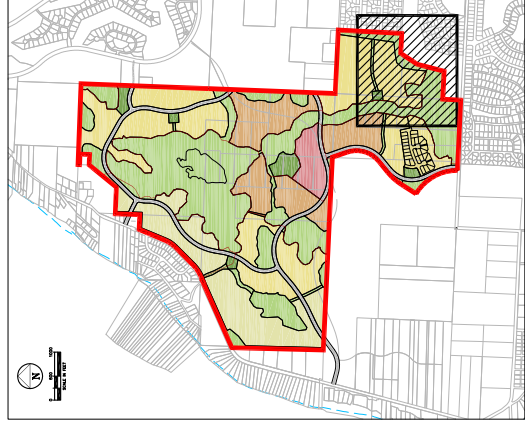
PORTIONS OF SECTION 15, THE NORTHEAST QUARTER OF SECTION 22 AND THE NORTHWEST QUARTER OF SECTION 29, TOWNSHIP 40 NORTH, RANGE 1 WEST OF WM, WHATCOM COUNTY, WASHINGTON



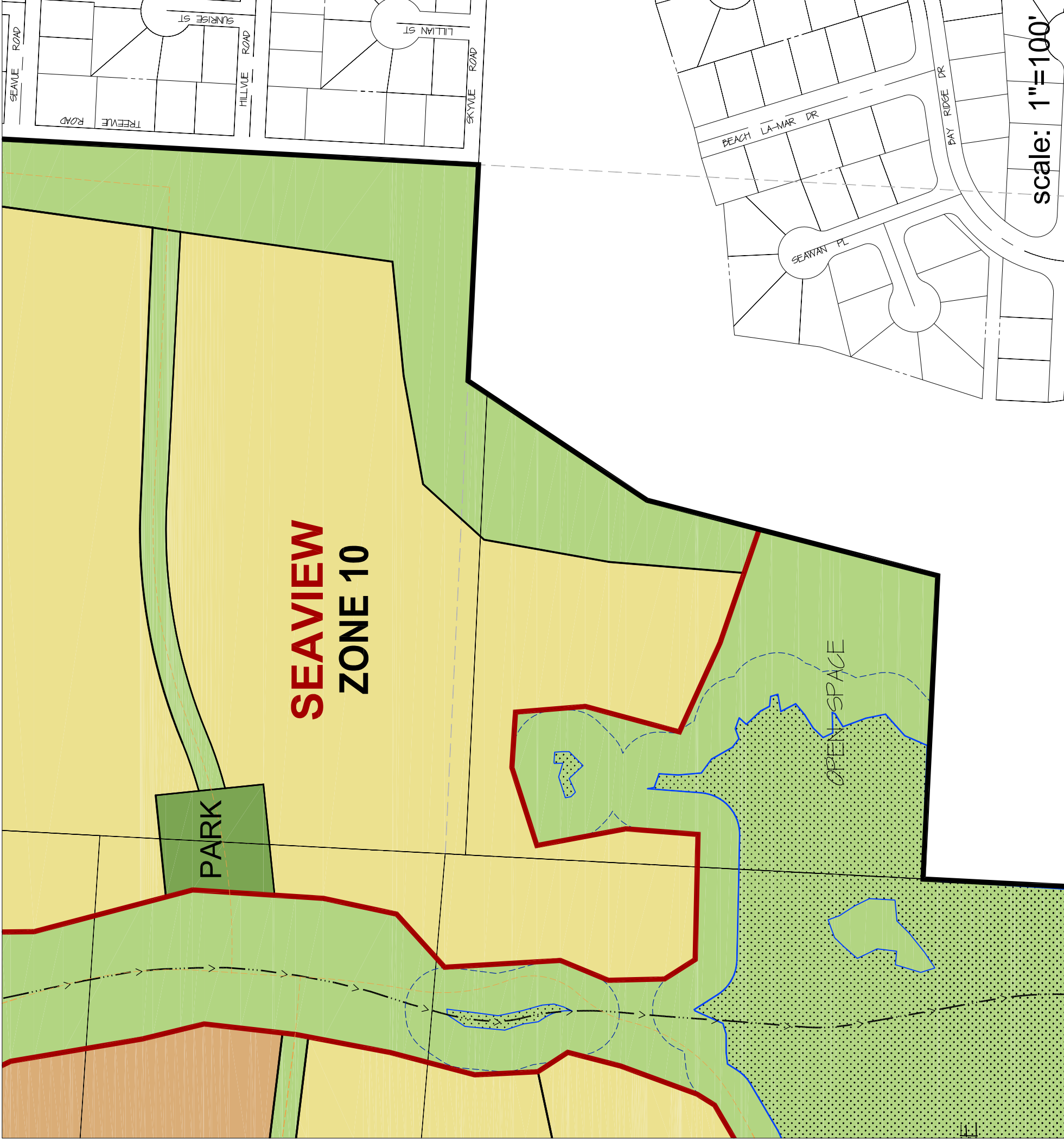
Use	Gross Acres	Units / Acre	Total Units
Village	16.2	6	97
Residential Commercial - up to 60,000 sf			
Type 1 Residential	76.1	6	457
Type 2 Residential	172.3	3.1	534
Type 3 Residential	79.1	2	158
TOTALS	343.8	3.6	1248

Illustrative Trail System	32.8
Proposed Road ROW	15.2
Parks	
Common Open Space	232.2
Incl. Wetlands & Buffers	
TOTAL ACRES	624.0

Zone	Acres	Units / Acre	Total Units
SEAVIEW			
9	27.6	3.25	90
10	20.5	3.25	67
Total	48.2		156



KEY MAP



NO. REVISIONS:	APPD.



DAVID EVANS AND ASSOCIATES INC.
119 Grand Avenue, Suite D
Bellevue, Washington 98225
Phone: 360.647.7151
Fax: 360.647.7160



SEAMHMOO CO. BLAINE, WASHINGTON PLANNED UNIT DEVELOPMENT SITE PLAN - SEAVIEW NEIGHBORHOOD

PROJECT NUMBER: TRLX0150
DATE: OCT 30, 2009
DESIGN: JAWA
DRAWN: JAWA
CHECKED:
SCALE: 1" = 100'
SHEET NO.

PD13.4b