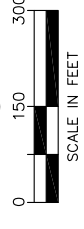
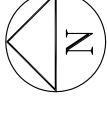


# SEMAHMOO WEST PLANNED UNIT DEVELOPMENT

PORTIONS OF SECTION 15, THE NORTHEAST QUARTER OF SECTION 22 AND THE NORTHWEST QUARTER OF SECTION 29, TOWNSHIP 40 NORTH, RANGE 1 WEST OF WM, WHATCOM COUNTY, WASHINGTON

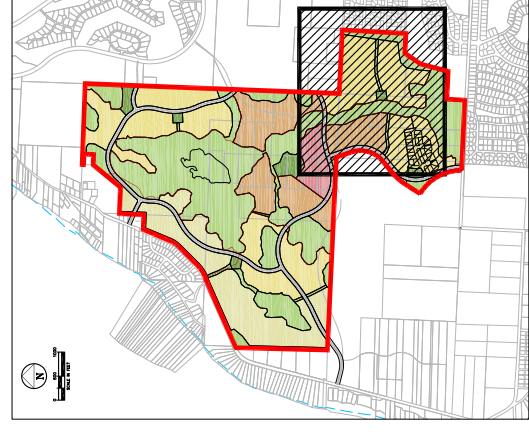


Use	Gross Acres	Units / Acre	Total Units
<b>Village</b>	16.2	6	97
Residential Commercial - up to 60,000 sf			
Type 1 Residential	76.1	6	457
Type 2 Residential	172.3	3.1	534
Type 3 Residential	79.1	2	158
<b>TOTALS</b>	<b>343.8</b>	<b>3.6</b>	<b>1248</b>

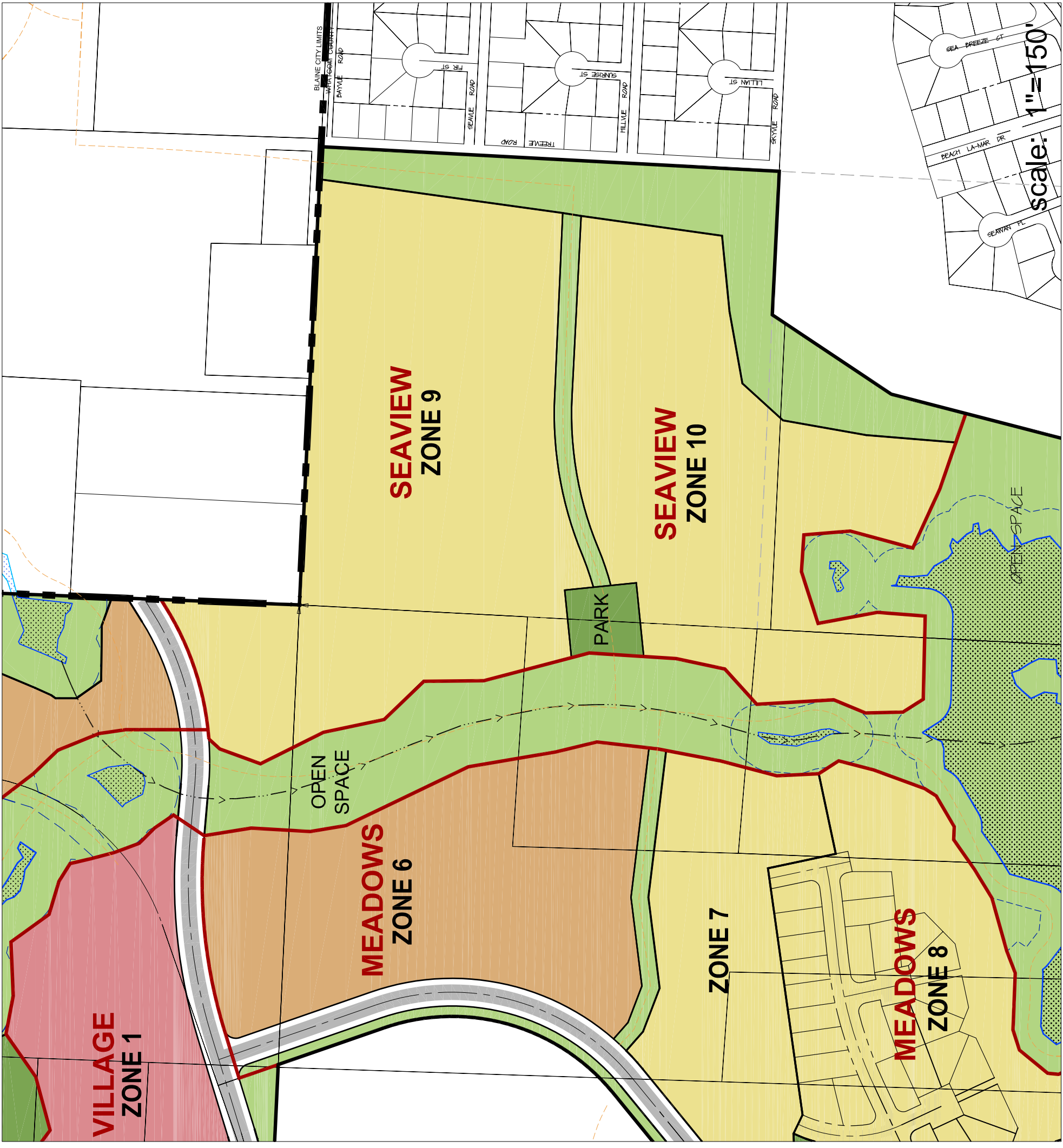
  

Illustrative Trail System	32.8
Proposed Road ROW	15.2
Parks	
Common Open Space	232.2
Incl. Wetlands & Buffers	
<b>TOTAL ACRES</b>	<b>624.0</b>

Zone	Acres	Units / Acre	Total Units
<b>SEAVIEW</b>			
9	27.6	3.25	90
10	20.5	3.25	67
<b>Total</b>	<b>48.2</b>		<b>156</b>



KEY MAP



Scale: 1" = 150'



**DAVID EVANS AND ASSOCIATES, INC.**  
119 Grand Avenue, Suite D  
Bellingham, Washington 98225  
Phone: 360.647.7151  
Fax: 360.647.7160



**SEMAHMOO CO.**  
BLAINE, WASHINGTON  
**SEMAHMOO WEST**  
PLANNED UNIT DEVELOPMENT  
SITE PLAN - SEAVIEW NEIGHBORHOOD

PROJECT NUMBER:  
TRLX0150  
DATE: OCT 30, 2009  
DESIGN: JAWA  
DRAWN: JAWA  
CHECKED:  
SCALE: 1" = 150'  
SHEET NO.

**PD13.4**

NO. REVISIONS:

NO.	REVISIONS

APPD.