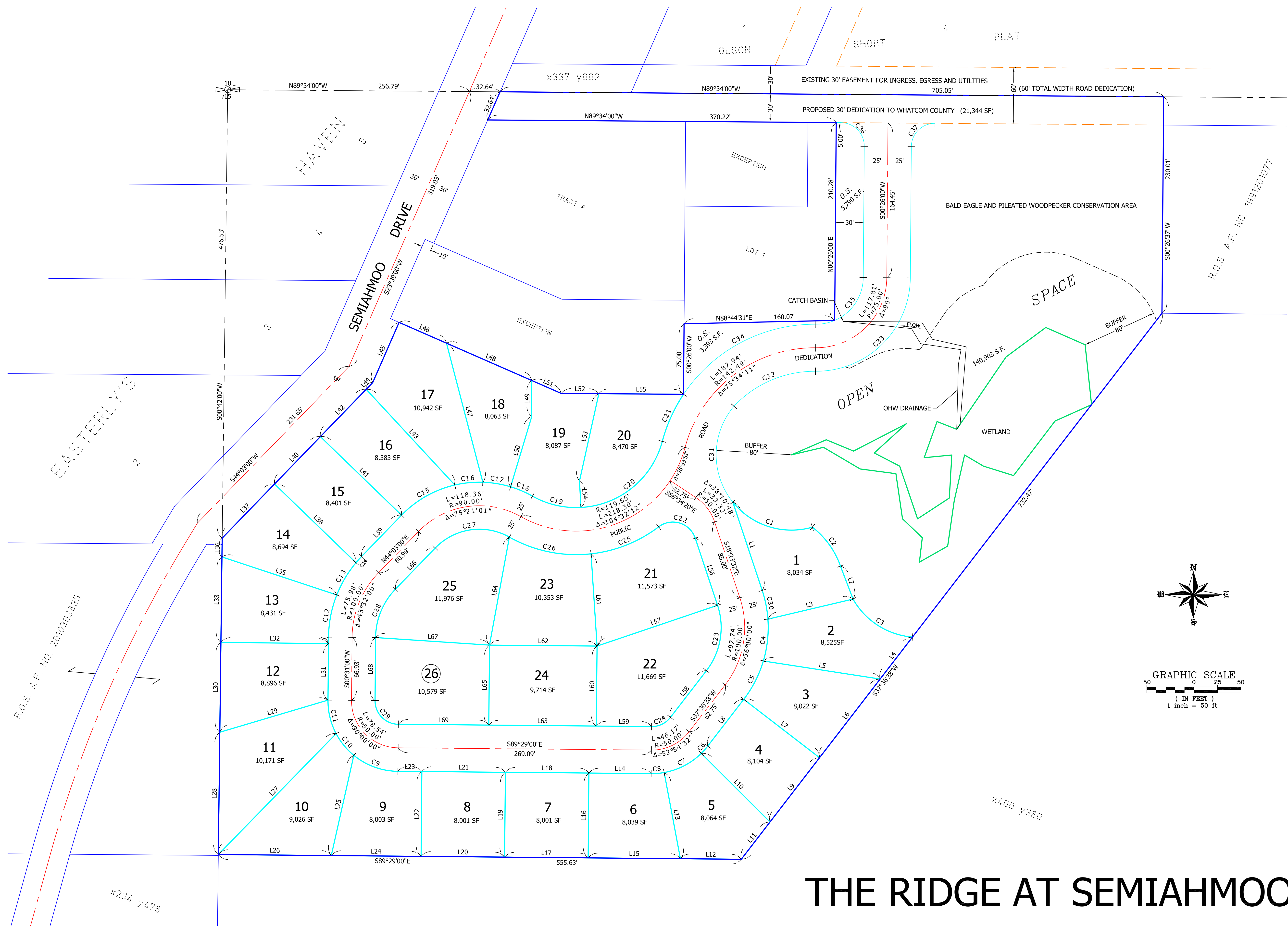


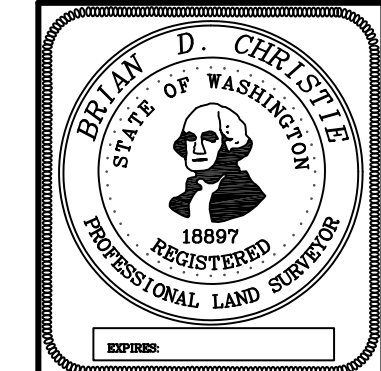
LINE	LENGTH	BEARING
L1	98.98	S18°23'32"E
L2	37.56	N20°50'56"W
L3	92.91	S76°44'27"W
L4	56.27	N37°36'28"E
L5	125.54	S81°13'07"E
L6	105.50	N37°36'28"E
L7	101.62	S52°23'32"E
L8	62.75	S37°36'28"W
L9	86.27	N37°36'28"E
L10	103.18	N45°03'30"W
L11	50.00	N37°36'28"E
L12	64.69	S89°29'00"E
L13	93.20	N10°39'12"W
L14	66.15	S89°29'00"E
L15	98.00	S89°29'00"E
L16	90.16	N00°31'00"E
L17	88.75	N89°29'00"W
L18	88.75	N89°29'00"W
L19	90.16	N00°31'00"E
L20	88.75	S89°29'00"E
L21	88.75	S89°29'00"E
L22	90.16	N00°31'00"E
L23	25.44	N89°29'00"W
L24	95.44	S89°29'00"E
L25	109.14	N12°42'00"E
L26	120.00	N89°29'00"W
L27	179.34	S44°14'50"W
L28	130.00	N00°42'00"E
L29	119.86	N73°27'32"E
L30	95.52	N00°42'00"E
L31	60.00	S00°31'00"W
L32	114.28	N89°18'00"W
L33	90.79	N00°42'00"E
L34	6.93	N00°31'00"E
L35	128.50	S71°40'43"E
L36	20.00	S00°42'00"W
L37	80.00	S44°03'00"W
L38	120.32	N45°57'00"W
L39	60.99	N44°03'00"E
L40	70.00	N44°03'00"E
L41	120.00	N45°57'00"W
L42	70.00	N44°03'00"E
L43	138.60	N42°48'07"W
L44	10.04	N44°03'00"E
L45	69.76	N23°39'00"E
L46	55.00	N66°21'00"W
L47	152.77	N14°38'12"W
L48	98.92	N66°21'00"W
L49	38.19	N00°00'00"E
L50	78.10	N16°44'11"E
L51	34.13	N66°21'00"W
L52	40.00	N89°34'00"W
L53	95.00	N12°30'00"E
L54	28.24	S03°01'33"E
L55	90.00	S89°34'00"E
L56	75.19	S18°23'32"E
L57	135.16	N71°17'21"E
L58	62.75	N37°36'28"E
L59	58.71	S89°29'00"E
L60	85.00	S00°31'00"W
L61	98.24	N03°43'12"W
L62	114.28	S89°29'00"E
L63	114.28	N89°29'00"W
L64	116.69	N10°24'58"E
L65	85.00	S00°31'00"W
L66	60.99	N44°03'00"E
L67	121.30	S86°12'32"E
L68	66.93	N00°31'00"E
L69	96.10	S89°29'00"E

CURVE	LENGTH	RADIUS	DELTA
C1	93.95'	80.00'	67°17'18"
C2	51.69'	90.00'	32°54'18"
C3	78.00'	80.00'	55°51'48"
C4	45.00'	125.00'	20°37'35"
C5	46.00'	125.00'	21°05'05"
C6	10.38'	75.00'	7°55'45"
C7	45.00'	75.00'	34°22'39"
C8	13.88'	75.00'	10°36'08"
C9	50.75'	75.00'	38°46'19"
C10	30.00'	75.00'	22°55'06"
C11	37.06'	75.00'	28°18'36"
C12	45.96'	125.00'	21°04'00"
C13	40.00'	125.00'	18°20'05"
C14	9.01'	125.00'	4°07'56"
C15	65.94'	115.00'	32°51'17"
C16	30.00'	115.00'	14°56'48"
C17	30.00'	115.00'	14°56'48"
C18	25.29'	115.00'	12°36'08"
C19	53.56'	94.65'	32°25'34"
C20	119.12'	94.65'	72°06'37"
C21	55.14'	167.49'	18°51'47"
C22	47.50'	25.00'	108°51'59"
C23	73.30'	75.00'	56°00'00"
C24	23.09'	25.00'	52°54'32"
C25	78.28'	144.65'	31°00'24"
C26	90.05'	144.65'	35°40'07"
C27	85.48'	65.00'	75°21'01"
C28	56.99'	75.00'	43°32'00"
C29	39.27'	25.00'	90°00'00"
C30	31.17'	125.00'	14°17'19"
C31	110.36'	80.00'	79°02'09"
C32	97.03'	117.49'	47°19'11"
C33	157.08'	100.00'	90°00'00"
C34	165.77'	167.49'	56°42'24"
C35	78.54'	50.00'	90°00'00"
C36	39.27'	25.00'	90°00'00"
C37	39.27'	25.00'	90°00'00"



LEGEND
O.S. DENOTES OPEN SPACE

THE RIDGE AT SEMIAHMOO



CHRISTIE & CHRISTIE
LAND SURVEYING INC.
222 GRAND AVE. SUITE 'D'
BELLINGHAM, WASHINGTON 98225
PH. # 360.671.8855 FAX # 360.671.8823

PREPARED FOR:		GORDON & DOREEN MONTGOMERY 8887 SEMIAHMOO DRIVE BLAINE, WA 98230-9516	
DATE: FEB. 2010	DRAWN BY: JCA	JOB NO. 2911161	
SCALE: AS SHOWN	CHECKED BY: BDC	PRELIM APP_2 of 2_rev1.dwg	
		SHEET 2 OF 2	