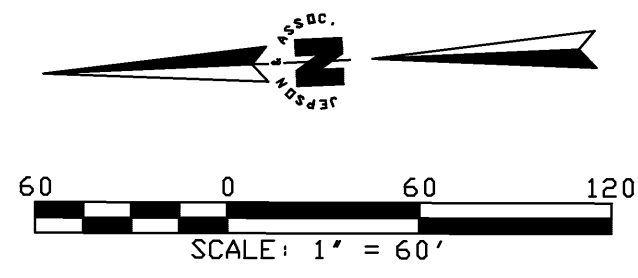
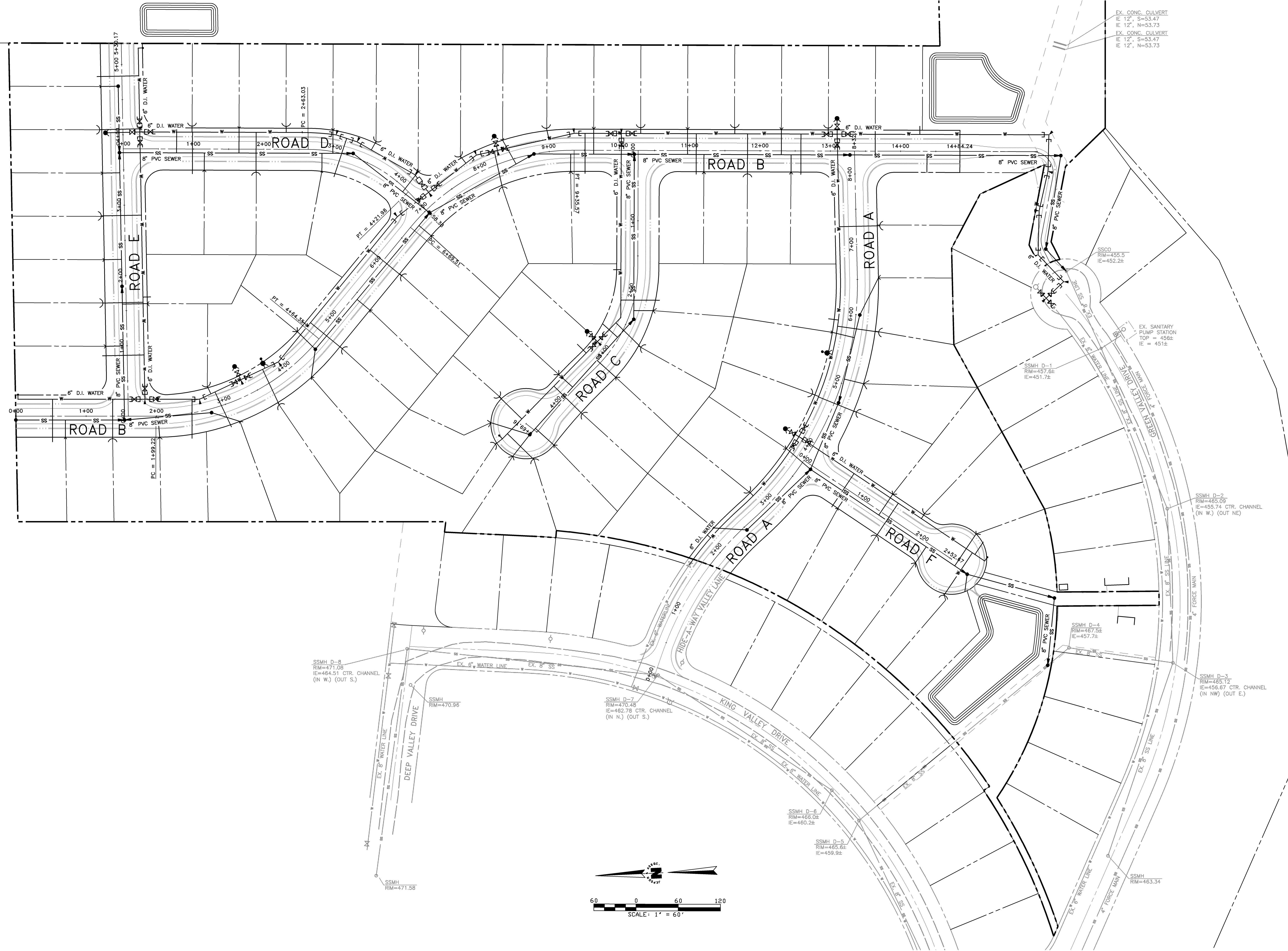


L:\jepsen Projects\2007\07124\dwg\Planshts\05-UTILITIES.DWG - blindman - FEB 18, 2009 - 16:32:24

THE USE OF THESE PLANS AND SPECIFICATIONS SHALL BE RESTRICTED TO THE ORIGINAL SITE FOR WHICH THEY WERE PREPARED AND PUBLICATION THEREOF IS EXPRESSLY LIMITED TO SUCH USE. REPRODUCTION, OR PUBLICATION BY ANY METHOD, IN WHOLE OR IN PART, IS PROHIBITED. TITLE TO THE PLANS AND SPECIFICATIONS REMAINS IN THE ENGINEER WITHOUT PREJUDICE. VISUAL CONTACT WITH THESE PLANS AND SPECIFICATIONS SHALL CONSTITUTE PRIMA FACIE EVIDENCE OF THE ASSUMPTION OF THESE RESTRICTIONS.



REVISIONS	
DESIGNED BY	JRT
DRAWN BY	JRT
DATE:	PRELIMINARY
RONALD T. JEPSON ENGINEER	
RCE:	9361

**PRELIMINARY
NOT FOR CONSTRUCTION**

RONALD T. JEPSON & ASSOC.
 CIVIL ENGINEERING SURVEYING LAND PLANNING
 222 GRAND AVENUE, SUITE C, BELLINGHAM, WASHINGTON 98225
 360-733-5760 FAX 360-647-8939 WWW.RONALDTJEPSON.COM

PREPARED FOR: HOLLY ASSOCIATES, LLC, S.C. GOSHEN, LLC AND COLUMBIA INVESTMENT CO.

UTILITIES PLAN
 RED MOUNTAIN ESTATES
 TOWN OF KENDALL
 WHATCOM COUNTY, WASHINGTON

SCALE: AS SHOWN
 DATE: 02/18/2009
 SHEET:
U-1
 WO: 07124