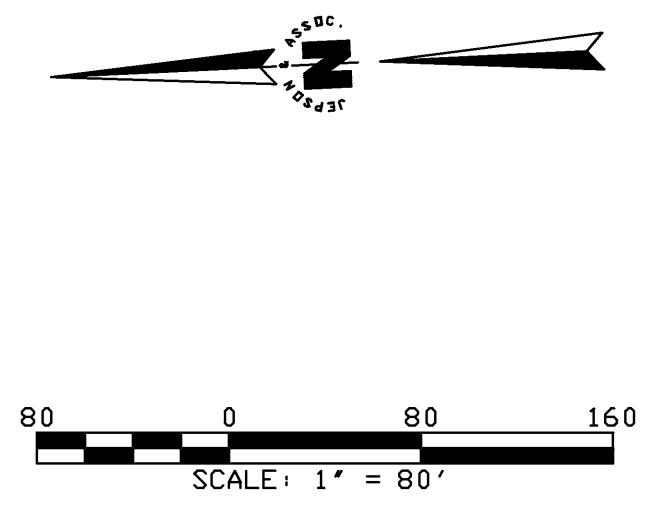
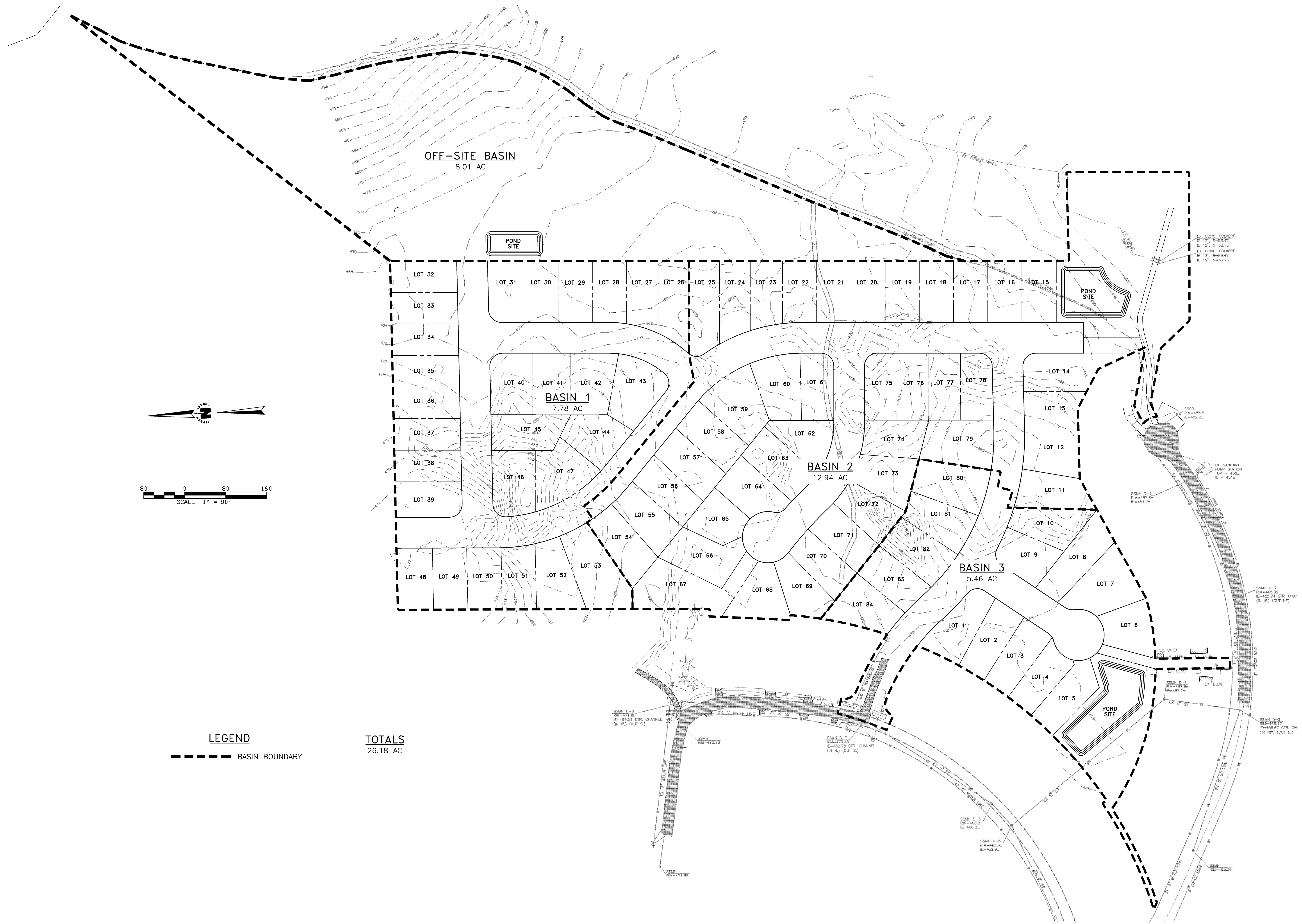


L:\Jepson Projects\2007\07124\dwg\Exhibits\03 - POST-DEVELOPMENT BASIN.DWG - bhindman - FEB 18, 2009 - 17:01:49

THE USE OF THESE PLANS AND SPECIFICATIONS SHALL BE RESTRICTED TO THE ORIGINAL SITE FOR WHICH THEY WERE PREPARED AND PUBLICATION THEREOF IS EXPRESSLY LIMITED TO SUCH USE. REPRODUCTION, OR PUBLICATION BY ANY METHOD, IN WHOLE OR IN PART, IS PROHIBITED. TITLE TO THE PLANS AND SPECIFICATIONS REMAINS IN THE ENGINEER WITHOUT PREJUDICE. VISUAL CONTACT WITH THESE PLANS AND SPECIFICATIONS SHALL CONSTITUTE PRIMA FACIE EVIDENCE OF THE ACCEPTANCE OF THESE RESTRICTIONS.



LEGEND
 - - - - - BASIN BOUNDARY

TOTALS
 26.18 AC

REVISIONS

DESIGNED BY	XXX
DRAWN BY	XXX
DATE:	PRELIMINARY
	RONALD T. JEPSON ENGINEER
RCE:	9361

RONALD T. JEPSON & ASSOC.
 PRELIMINARY
 NOT FOR CONSTRUCTION

LAND PLANNING - SURVEYING - CIVIL ENGINEERING
 222 GRAND AVENUE, SUITE C, BELLINGHAM, WASHINGTON 98225
 360-733-5760 FAX 360-647-8839 WWW.RONALDJEPSON.COM

PREPARED FOR: HOLLY ASSOCIATES, LLC AND COLUMBIA INVESTMENT COMPANY
POST-DEVELOPMENT BASIN
 RED MOUNTAIN ESTATES
 TOWN OF KENDALL
 COUNTY OF WHATCOM, WASHINGTON

SCALE: AS SHOWN
 DATE: 2/13/2009
 SHEET:
3 OF 4
 WO: 07124