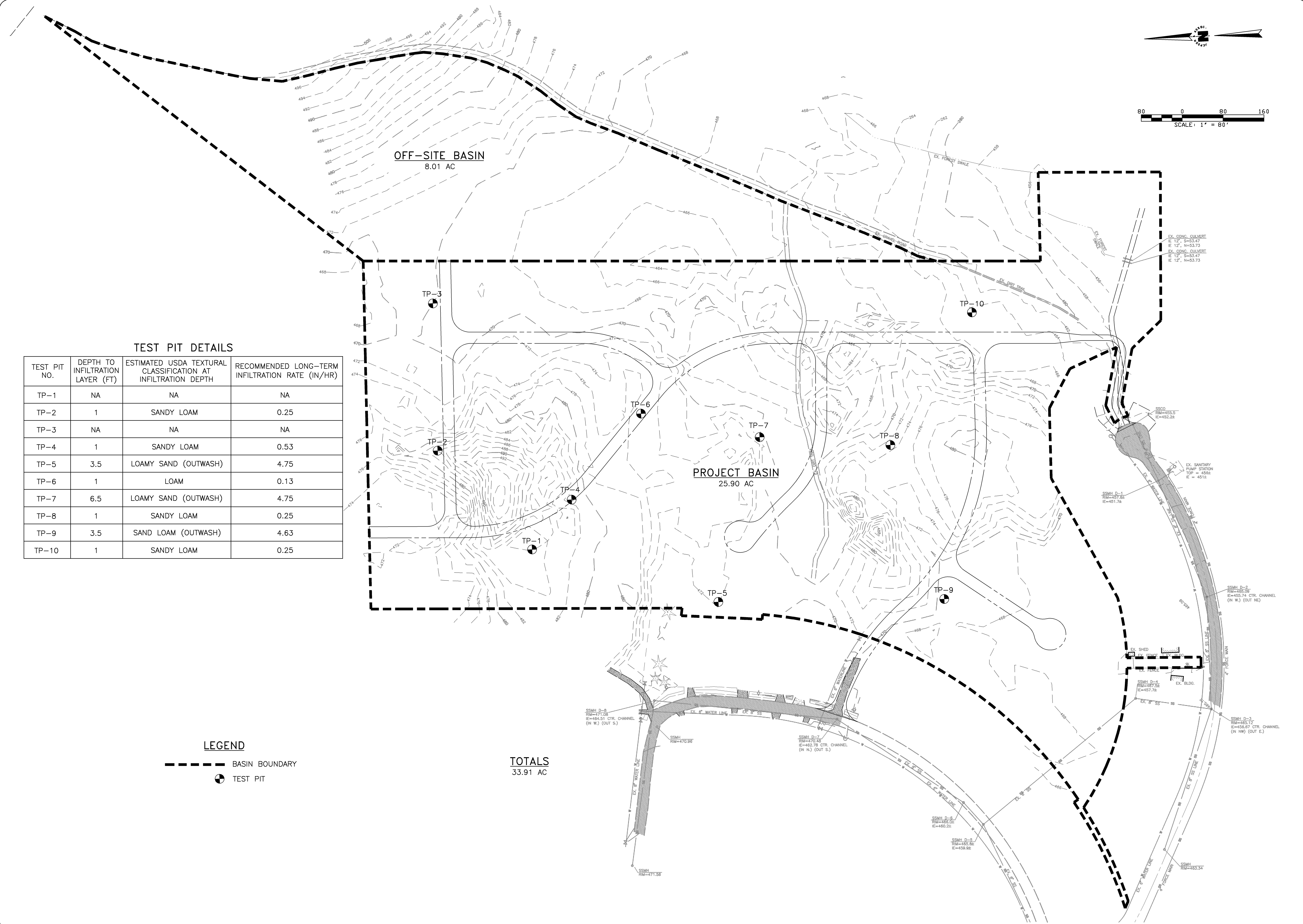


L:\Jepson Projects\2007\07124.dwg - PRE-DEVELOPMENT BASIN.DWG - blindman - FEB 18, 2009 - 16:59:58
 THE USE OF THESE PLANS AND SPECIFICATIONS SHALL BE RESTRICTED TO THE ORIGINAL SITE FOR WHICH THEY WERE PREPARED AND PUBLICATION THEREOF IS EXPRESSLY LIMITED TO SUCH USE. REPRODUCTION, OR PUBLICATION BY ANY METHOD, IN WHOLE OR IN PART, IS PROHIBITED. TITLE TO THE PLANS AND SPECIFICATIONS REMAINS IN THE ENGINEER WITHOUT PREJUDICE. VISUAL CONTACT WITH THESE PLANS AND SPECIFICATIONS SHALL CONSTITUTE PRIMA FACIE EVIDENCE OF THE ACCEPTANCE OF THESE RESTRICTIONS.



TEST PIT DETAILS

TEST PIT NO.	DEPTH TO INFILTRATION LAYER (FT)	ESTIMATED USDA TEXTURAL CLASSIFICATION AT INFILTRATION DEPTH	RECOMMENDED LONG-TERM INFILTRATION RATE (IN/HR)
TP-1	NA	NA	NA
TP-2	1	SANDY LOAM	0.25
TP-3	NA	NA	NA
TP-4	1	SANDY LOAM	0.53
TP-5	3.5	LOAMY SAND (OUTWASH)	4.75
TP-6	1	LOAM	0.13
TP-7	6.5	LOAMY SAND (OUTWASH)	4.75
TP-8	1	SANDY LOAM	0.25
TP-9	3.5	SAND LOAM (OUTWASH)	4.63
TP-10	1	SANDY LOAM	0.25

LEGEND

- BASIN BOUNDARY
- TEST PIT

TOTALS
33.91 AC

REVISIONS

DESIGNED BY	XXX
DRAWN BY	XXX
DATE:	PRELIMINARY
RONALD T. JEPSON	ENGINEER
RCE:	9361

PRELIMINARY
NOT FOR CONSTRUCTION

RONALD T. JEPSON & ASSOC.
 CIVIL ENGINEERING SURVEYING - LAND PLANNING
 222 GRAND AVENUE, SUITE C, BELLINGHAM, WASHINGTON 98225
 360-733-5760 FAX 360-647-8939 WWW.RONALDJEPSON.COM

PREPARED FOR: HOLLY ASSOCIATES, LLC AND COLUMBIA INVESTMENT COMPANY
PRE-DEVELOPMENT BASIN
 RED MOUNTAIN ESTATES
 TOWN OF KENDALL
 COUNTY OF WHATCOMB, WASHINGTON

SCALE: AS SHOWN
 DATE: 2/13/2009
 SHEET: 2 OF 4
 WO: 07124