

Central North

LAND USE MANAGEMENT PRIORITY: DEVELOPMENT

Watershed Characterization Results from the 2007 Pilot Study:

This watershed's ability to help maintain / improve water quality:

The Central North watershed has little to no ability to improve water quality because it contains areas of dense residential and commercial development and an overall high level of impervious surfaces (e.g., roads, parking lots, and houses). In addition, there are no streams or significant wetland areas in the Central North watershed to help improve water quality.

This watershed's ability to maintain / improve natural patterns of surface and groundwater flow:

The natural surface water flow in the watershed has been highly altered from its original condition. In general, water runoff flows quickly into the Bay through ditches and storm drains associated with the existing roads and development. North of Birch Bay – Lynden Road is a patch of remnant forest land that may help maintain some natural flow. This undisturbed patch of forest can let rain soak into the ground, thus lessening potential erosion problems down slope.

Important Wildlife Features:

The substantial amount of development in the Central North watershed limits wildlife use of the area. However, the remnant forest patch north of Birch Bay – Lynden Road likely provides quality habitat for a moderate variety of mammals, birds, and other fauna.

Anticipated Challenges:

According to the 2007 pilot study, the Central North watershed has a moderate-to-high potential for future development. Almost all of the land area in the watershed is zoned "Urban Residential," which allows four to six dwelling units per acre. This potential increase in roads, houses, and other impervious surfaces in the area may increase the likelihood of erosion and water quality problems in this watershed. However, given the existing development and disturbed conditions of the Central North watershed, the 2007 pilot study suggests that the watershed is a suitable place to direct future development.

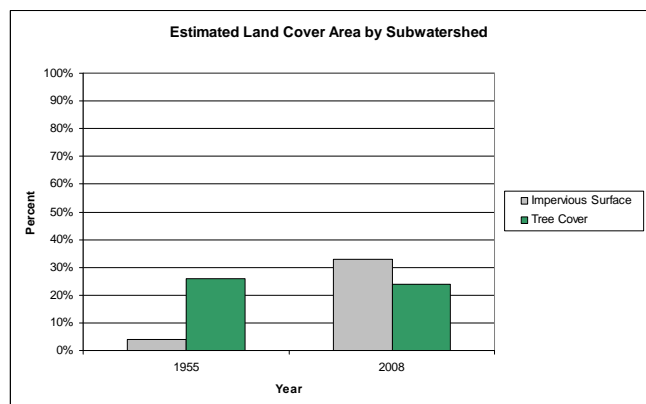
What We Found: The Land Cover Analysis by the Numbers

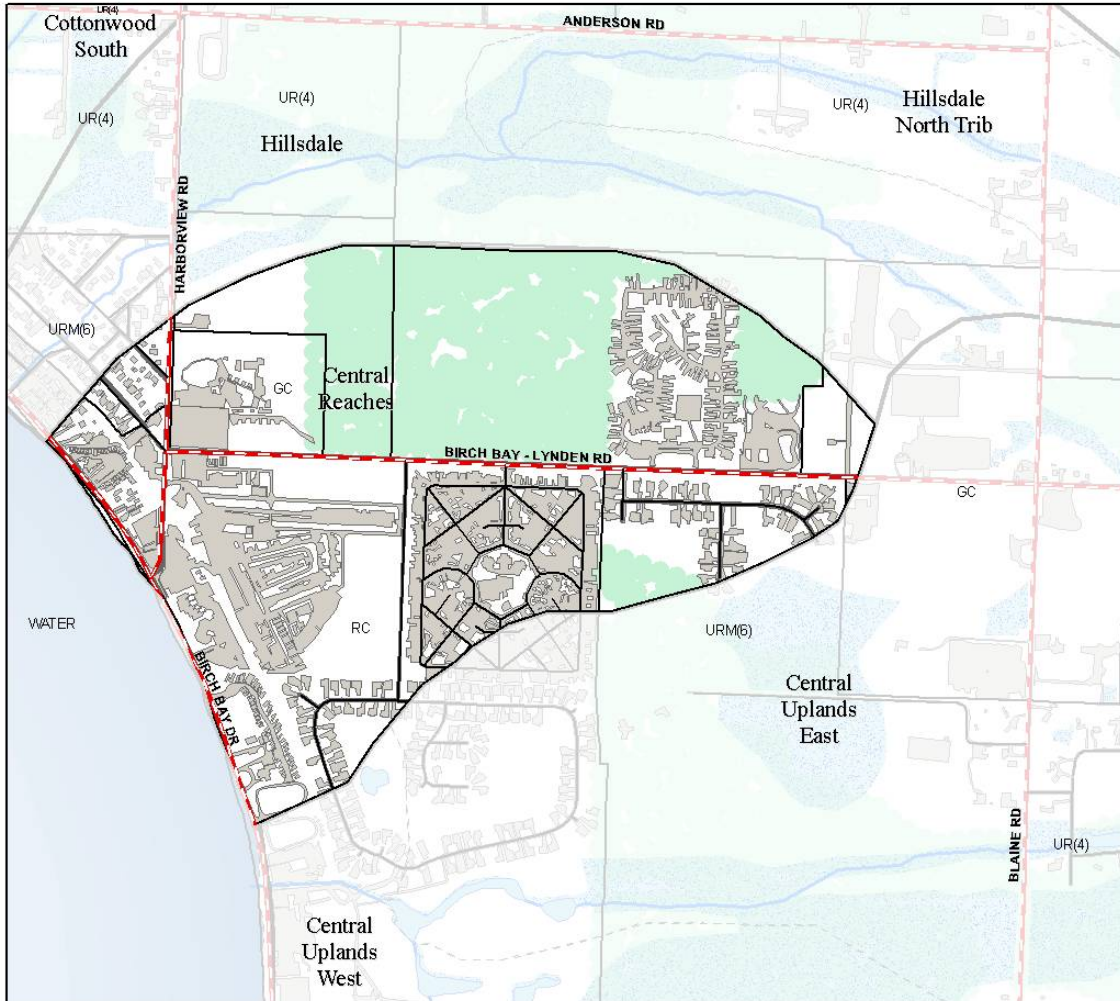
Feature	2008	1955
Impervious Surface	33 %*	4 %*
Tree Cover	24 %*	26 %*
Wetland cover	0%*	
Stream miles	0 mi	
Subwatershed Area	235 Ac	

*Percentage of Subwatershed

Note: Areas of tree cover and wetland cover may overlap

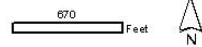
Note: Wetland data unavailable for 1955





Central North: Natural Infrastructure and Development

- Subwatershed Boundaries
- Tree Cover (2008)
- Zoning (Summer 2009)
- Mapped Wetlands
- Impervious Surfaces (2008)



Questions or comments? E-mail us at pgill@co.whatcom.wa.us or call 360-676-6907