

Legend

- CITY LIMITS
- ... UGA

1 inch = 1,200 feet

WILSON ENGINEERING GIS/GPS



Projected Coordinate System:
UTM Zone 10N NAD 27
Data Sources:
Whatcom County Assessor's
Office & Planning Department,
and the City of Nooksack

THE CITY OF NOOKSACK

WHATCOM COUNTY

WASHINGTON

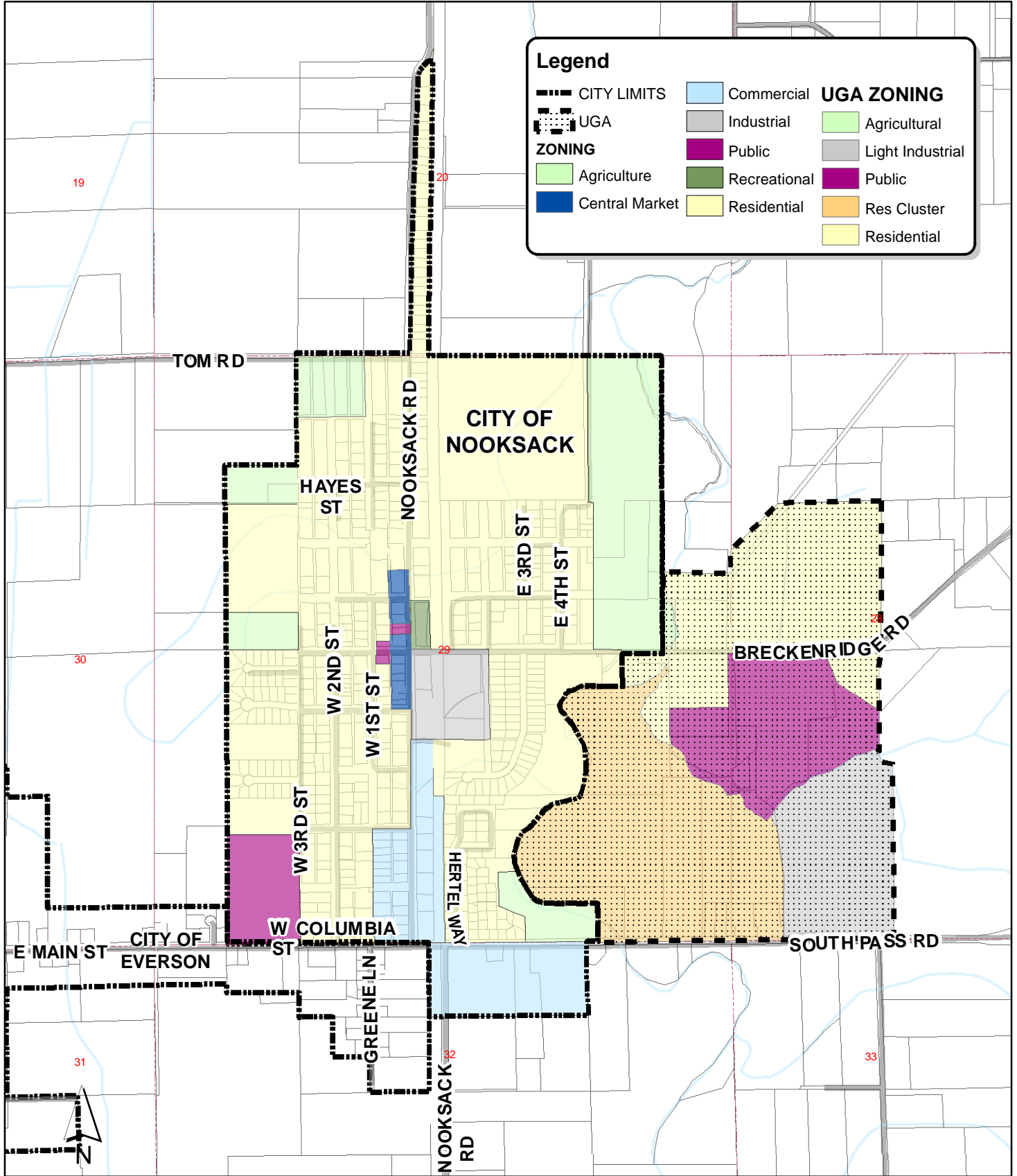
Map 1 Vicinity Map

DATE
JUNE 2009

SCALE
1:14,400

JOB NUMBER
2009-006

SHEET
1
OF
3



1 inch = 1,200 feet

THE CITY OF NOOKSACK GIS/GPS



Projected Coordinate System:
 UTM Zone 10N NAD 27
 Data Sources:
 Whatcom County Assessor's
 Office & Planning Department,
 and the City of Nooksack

THE CITY OF NOOKSACK

WHATCOM COUNTY

WASHINGTON

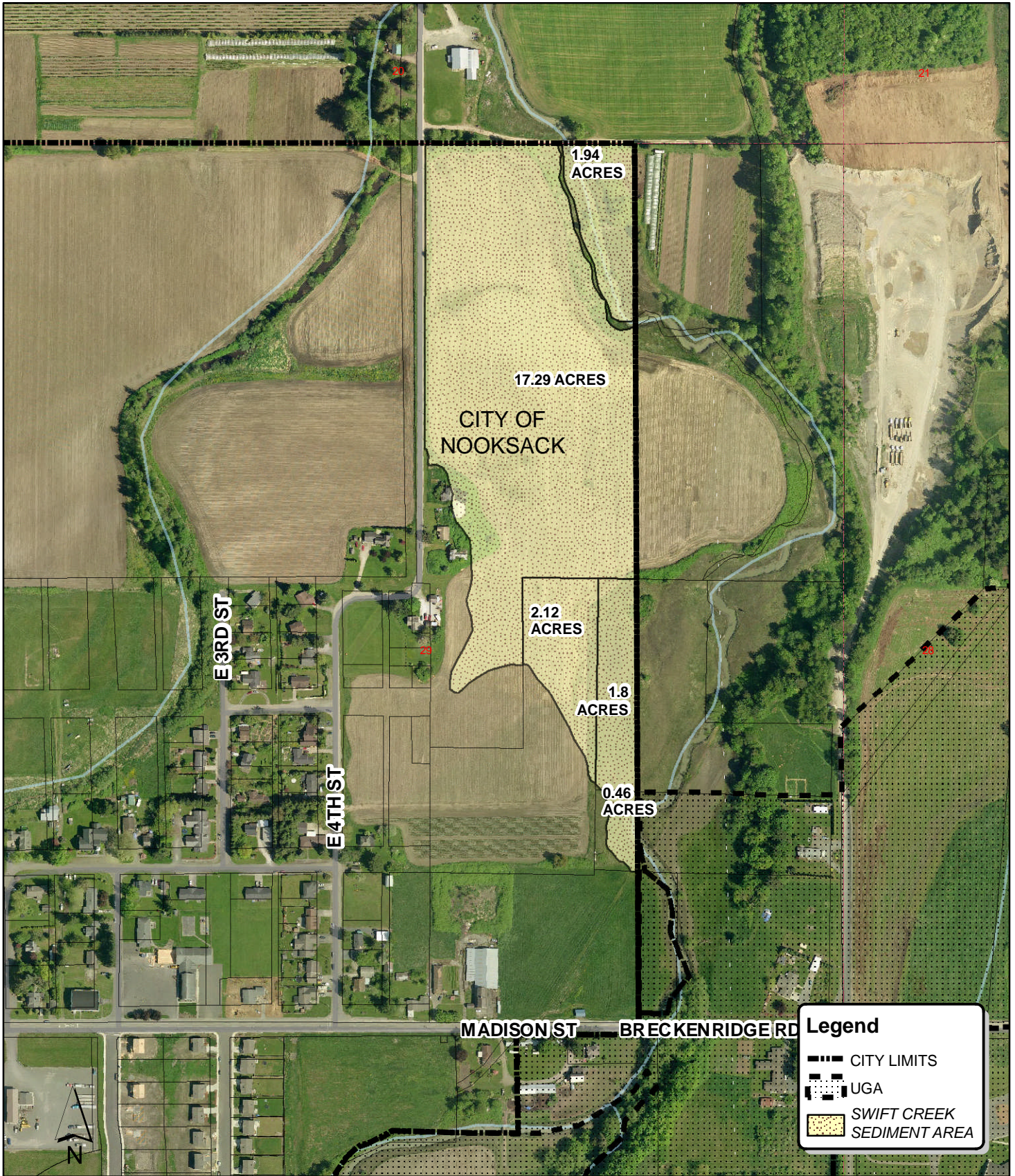
Map 2 Zoning Map

DATE
 JUNE 2009

SCALE
 1:14,400

JOB NUMBER
 2009-006

SHEET
 2
 OF
 3



1 inch = 400 feet

WILSON ENGINEERING GIS/GPS



Projected Coordinate System:
 UTM Zone 10N NAD 27
 Data Sources:
 Whatcom County Assessor's
 Office & Planning Department,
 and the City of Nooksack

THE CITY OF NOOKSACK

WHATCOM COUNTY

WASHINGTON

Map 3

Swift Creek Sediment Area

DATE
JUNE 2009

SHEET
3

SCALE
1:4,800

OF
3

JOB NUMBER
2009-006