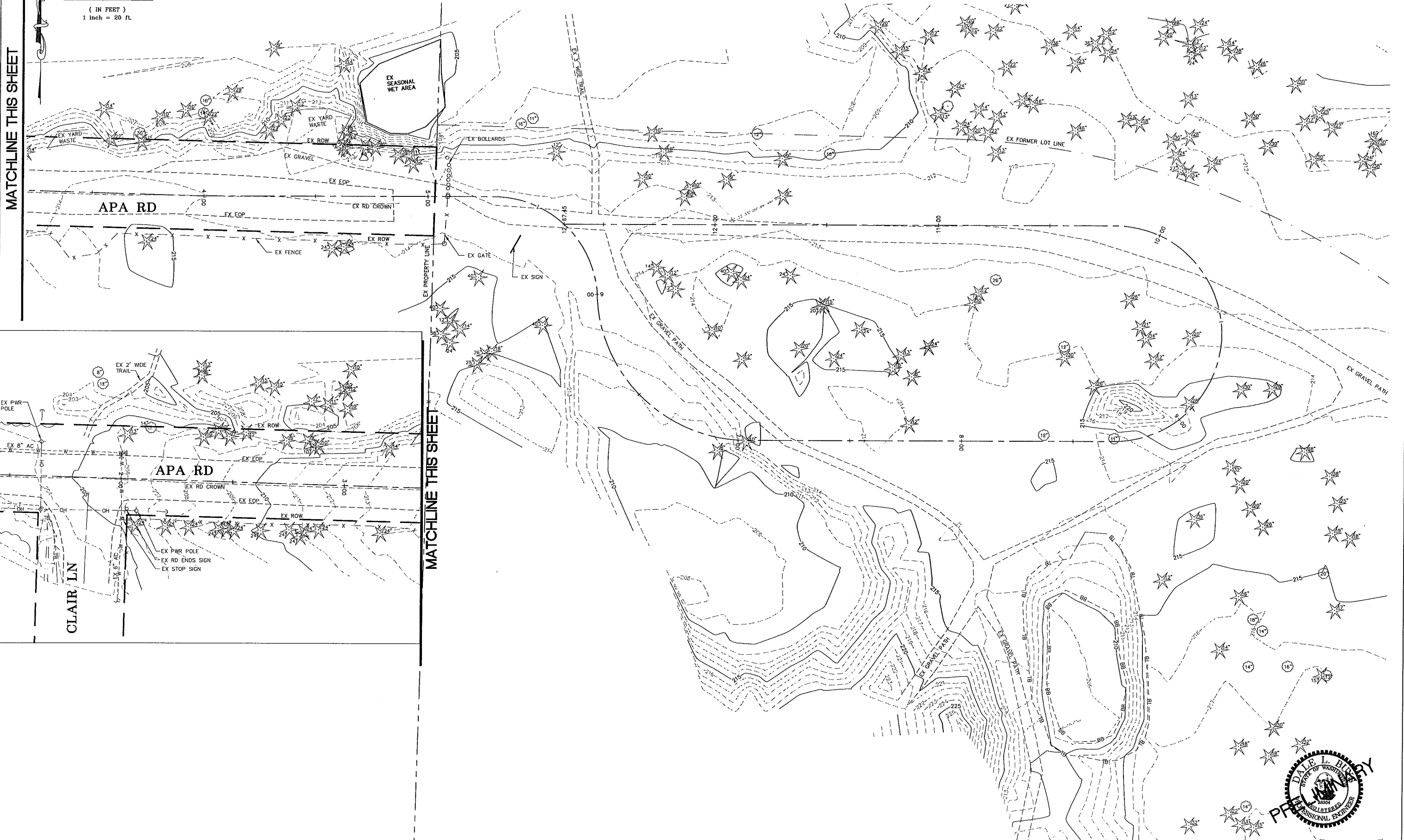


MATCHLINE THIS SHEET

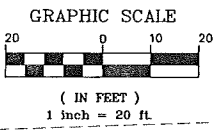


MATCHLINE THIS SHEET

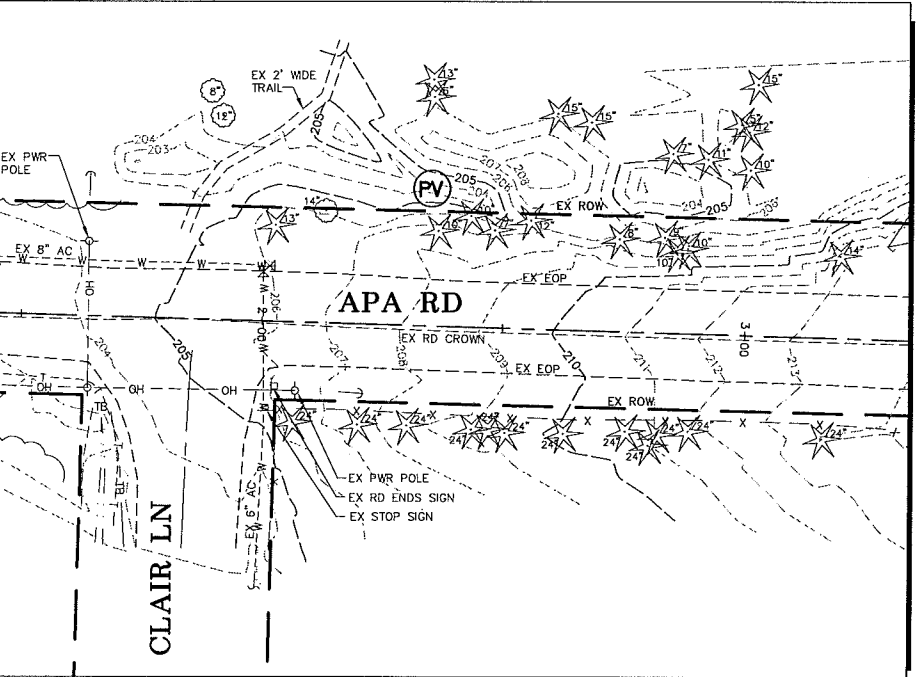
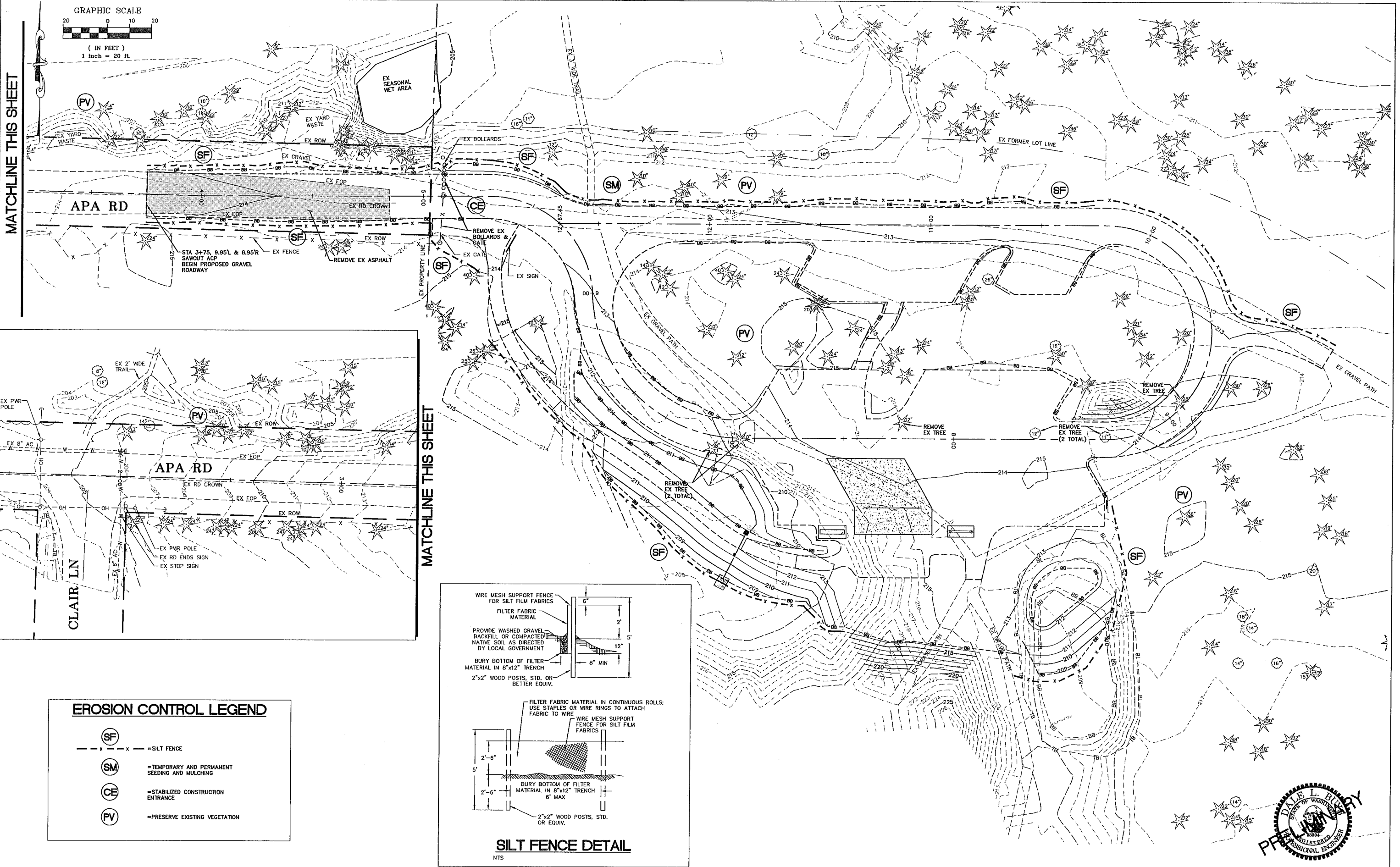


I:\Projects\11014\dwg\SP1.dwg, EX COND, 5/16/2011 1:01:49 PM

CALL BEFORE YOU DIG 1-800-424-5555	DESIGNED BY DLB/MLK DRAWN BY LMC/MLK CHECKED BY DLB	 REICHHARDT & EBE ENGINEERING, INC. CONSULTING ENGINEERS PO Box 978 423 Front St., Ste 201 Ph (360) 354-3687 Lynden, Washington 98264 Fax (360) 354-0407	NO.	DATE	REVISION	BY	WHATCOM COUNTY PARKS AND RECREATION 3373 MOUNT BAKER HIGHWAY BELLINGHAM, WA 98226	LILY POINT MARINE PARK EXISTING CONDITIONS	JOB# / DWG 10029 SP3.2 SCALE H: 1"=20' v: n/a	DATE 5/12/11 SHEET 2 of 7



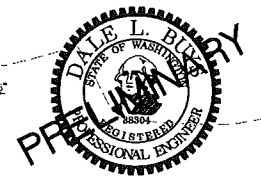
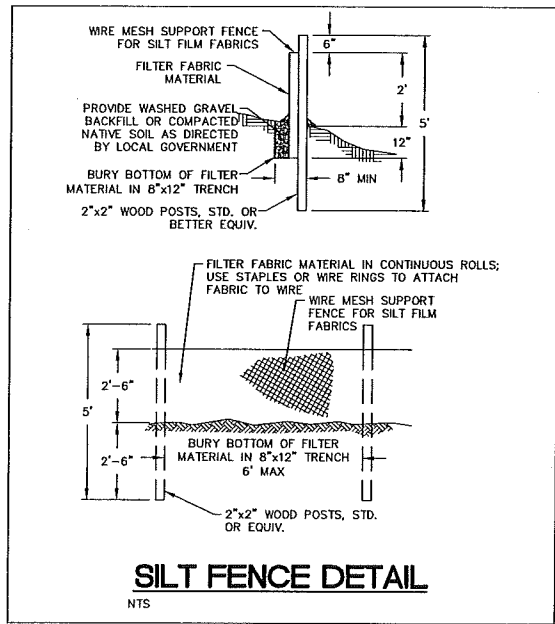
MATCHLINE THIS SHEET



MATCHLINE THIS SHEET

EROSION CONTROL LEGEND

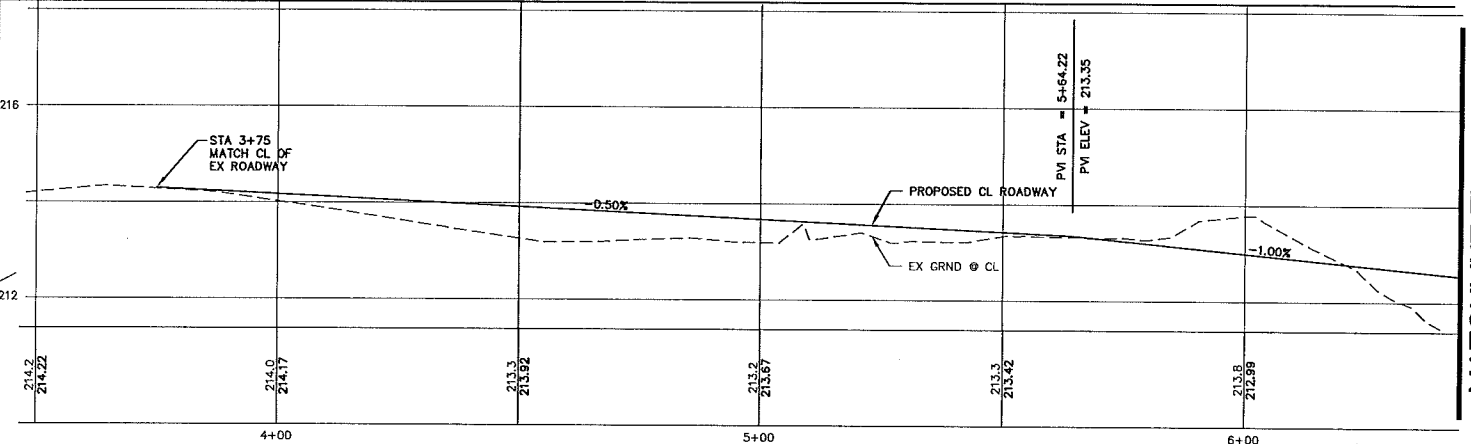
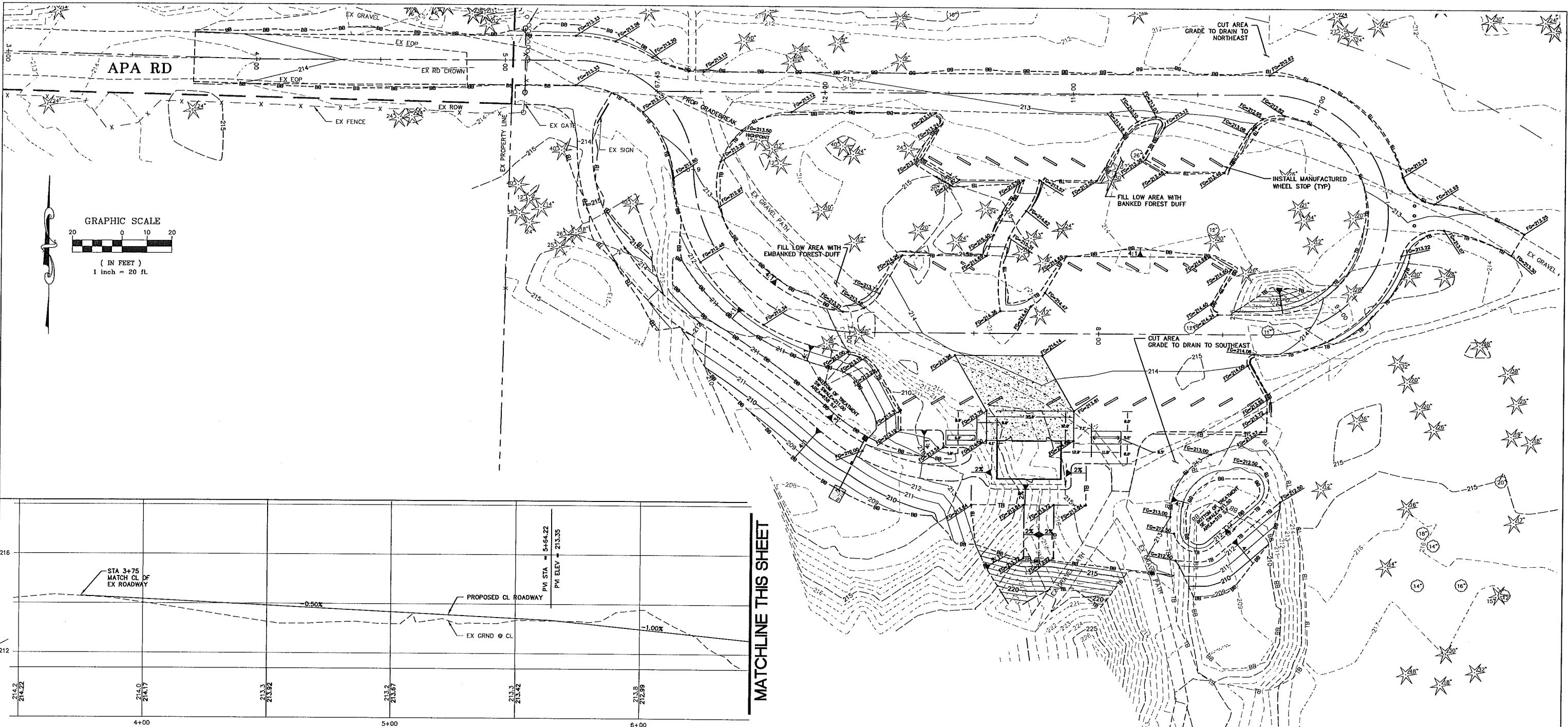
	= SILT FENCE
	= TEMPORARY AND PERMANENT SEEDING AND MULCHING
	= STABILIZED CONSTRUCTION ENTRANCE
	= PRESERVE EXISTING VEGETATION



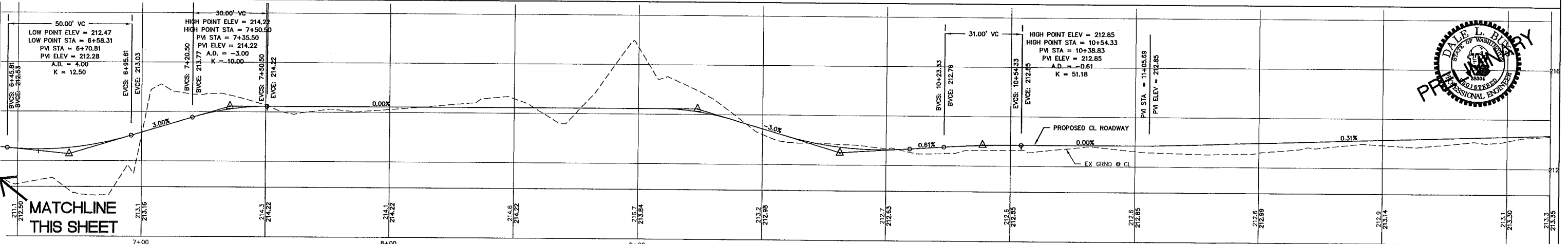
I:\Projects\11014\dwg\SP1.dwg, TESC-DEMO, 5/16/2011 1:05:01 PM

<p>CALL BEFORE YOU DIG 1-800-424-5555</p>	<p>DESIGNED BY DLB/MLK</p>	<p>REICHHARDT & EBE ENGINEERING, INC. CONSULTING ENGINEERS</p>	<p>NO. DATE REVISION BY</p>	<p>WHATCOM COUNTY PARKS AND RECREATION 3373 MOUNT BAKER HIGHWAY BELLINGHAM, WA 98226</p>	<p>LILY POINT MARINE PARK TESC AND DEMOLITION PLAN</p>	<p>JOB# / DWG 10029 SP3.2</p>	<p>DATE 5/12/11</p>
	<p>DRAWN BY LMC/MLK</p>					<p>PO Box 978 423 Front St., Ste 201 Ph (360) 354-3687 Lynden, Washington 98264 Fax (360) 354-0407</p>	<p>SCALE H: 1" = 20' v: n/a</p>

:Projects\11014\dwg\SP1.dwg, P&P, 5/16/2011 1:11:20 PM



MATCHLINE THIS SHEET



MATCHLINE THIS SHEET



CALL BEFORE YOU DIG
1-800-424-5555

DESIGNED BY
DLB/MLK
DRAWN BY
LMC/MLK
CHECKED BY
DLB



REICHHARDT & EBE
ENGINEERING, INC.
CONSULTING ENGINEERS
PO Box 978 423 Front St., Ste 201 Ph (360) 354-3687
Lynden, Washington 98264 Fax (360) 354-0407

NO.	DATE	REVISION	BY

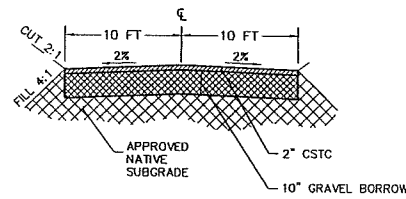
WHATCOM COUNTY PARKS AND RECREATION
3373 MOUNT BAKER HIGHWAY
BELLINGHAM, WA 98226

LILY POINT MARINE PARK
GRADING PLAN

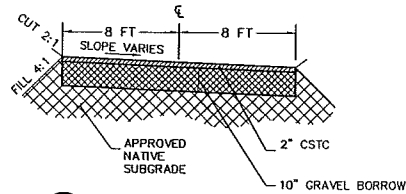
JOB# / DWG	10029	SP1	DATE	5/16/11
SCALE	H: 1" = 20' V: 1" = 2'		SHEET	5 of 7

Projects\10029\dwg\10029_DET.V2004.dwg, Layout1, 5/16/2011 1:15:27 PM

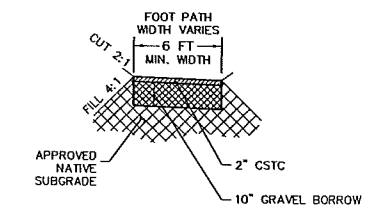
NOTES:
1. ROADWAY SECTION BASED OFF OF WHATCOM COUNTY STANDARDS / RURAL PRIVATE ROAD



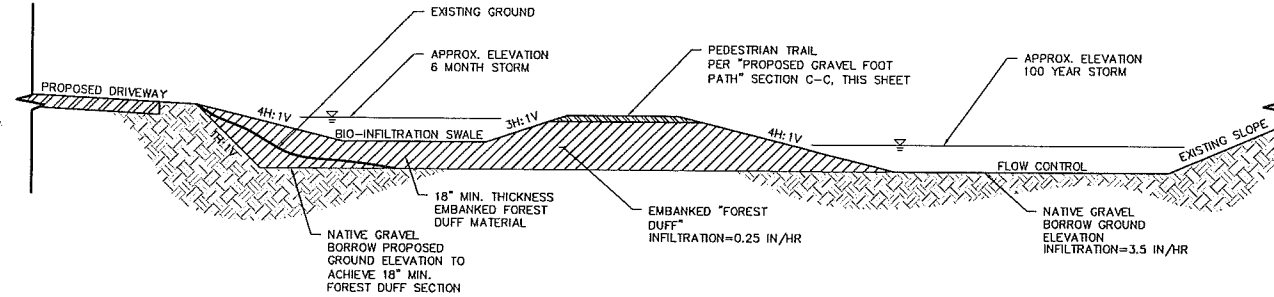
(A-A) PROPOSED ROAD SECTION
SCALE: H: NTS V: NTS



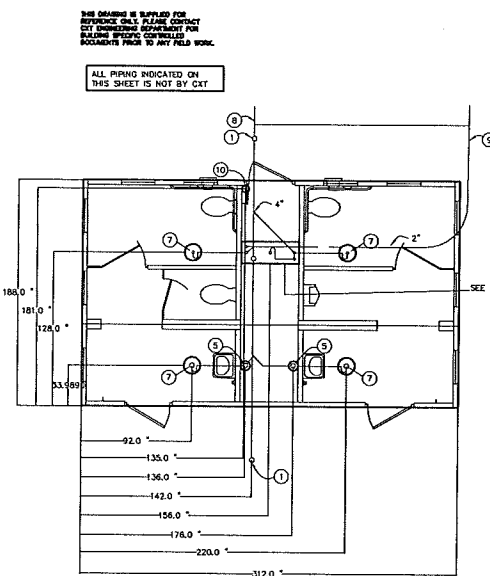
(B-B) PROPOSED ROAD SECTION
SCALE: H: NTS V: NTS



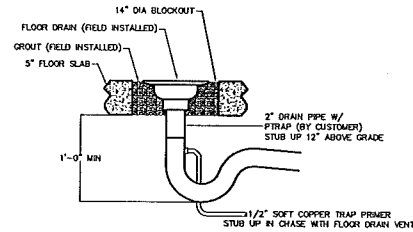
(C-C) PROPOSED GRAVEL FOOTPATH
SCALE: H: NTS V: NTS



(F-F) BIO-INFILTRATION SWALE SECTION
SCALE: H: NTS V: NTS



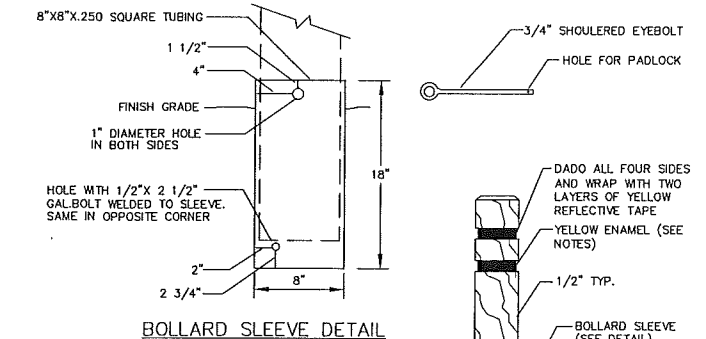
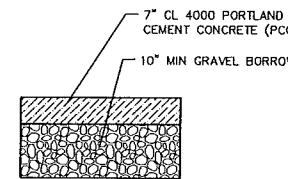
FLOOR DRAIN BLOCKOUTS & BELOW FLOOR PIPING



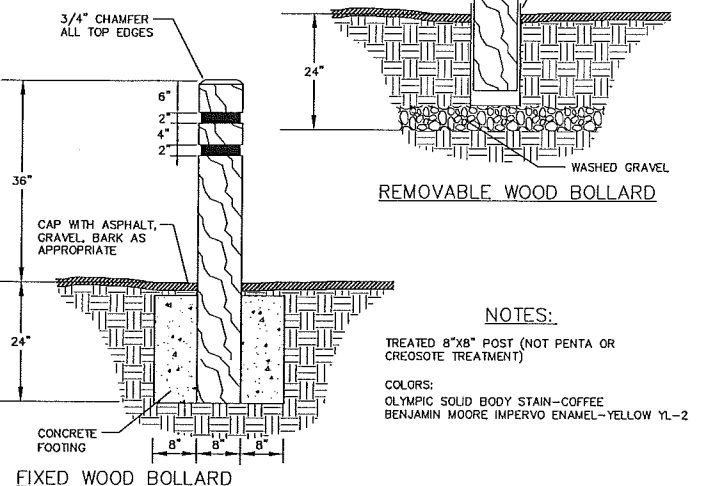
FLOOR DRAIN DETAIL

- BELOW FLOOR PIPING - KEY NOTES**
1. 4" CLEAN OUT TO GRADE.
 2. 2" FLOOR DRAIN, FIELD INSTALLED TRAP PRIMER SYSTEM IF REQUIRED BY AUTHORITY HAVING JURISDICTION (1"-6"x4" BLOCKOUT)
 3. 2" VENT PIPES EXTENDED 12" ABOVE FINISHED FLOOR LEVEL, PROVIDE TEST PLUG. (1"-6"x4" BLOCKOUT)
 4. 4" WASTE PIPE EXTENDED 12" ABOVE FINISHED FLOOR LEVEL, PROVIDE TEST PLUG. (1"-6"x4" BLOCKOUT)
 5. 2" VENT PIPES EXTENDED 12" ABOVE FINISHED FLOOR LEVEL, PROVIDE TEST PLUG. (6" BLOCKOUT)
 6. 2" TYPE K ANNEALED "SOFT" COPPER WATER SERVICE EXTENDED 12" ABOVE FINISHED FLOOR LEVEL, PROVIDE CAP AT END. (1"-6"x4" BLOCKOUT)
 7. 2" FLOOR DRAIN, FIELD INSTALLED TRAP PRIMER SYSTEM IF REQUIRED BY AUTHORITY HAVING JURISDICTION (14" BLOCKOUT)
 8. 30" MIN. BURY, PROVIDE TRACER TAPE.
 9. MIN. BURY PER LOCAL REQUIREMENTS TO PROTECT AGAINST FREEZING AND DAMAGE.
 10. ELECTRICAL STUB UP. (6" BLOCKOUT)

CONCRETE PAD SECTION DETAIL
SCALE: H: NTS V: NTS



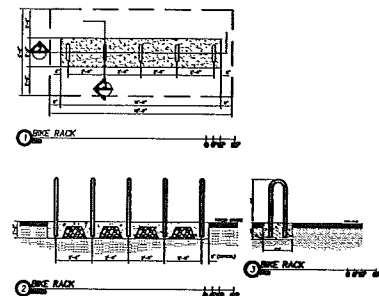
BOLLARD SLEEVE DETAIL



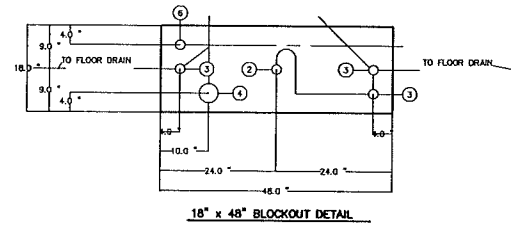
FIXED WOOD BOLLARD

WOODEN BOLLARD
SCALE: H: NTS V: NTS

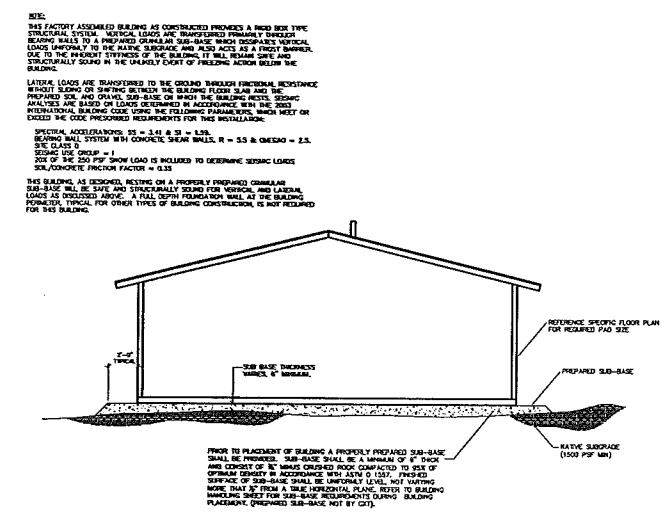
- NOTES:**
- TREATED 8"x8" POST (NOT PENTA OR CREOSOTE TREATMENT)
 - COLORS: OLYMPIC SOLID BODY STAIN-COFFEE BENJAMIN MOORE IMPERVO ENAMEL-YELLOW YL-2



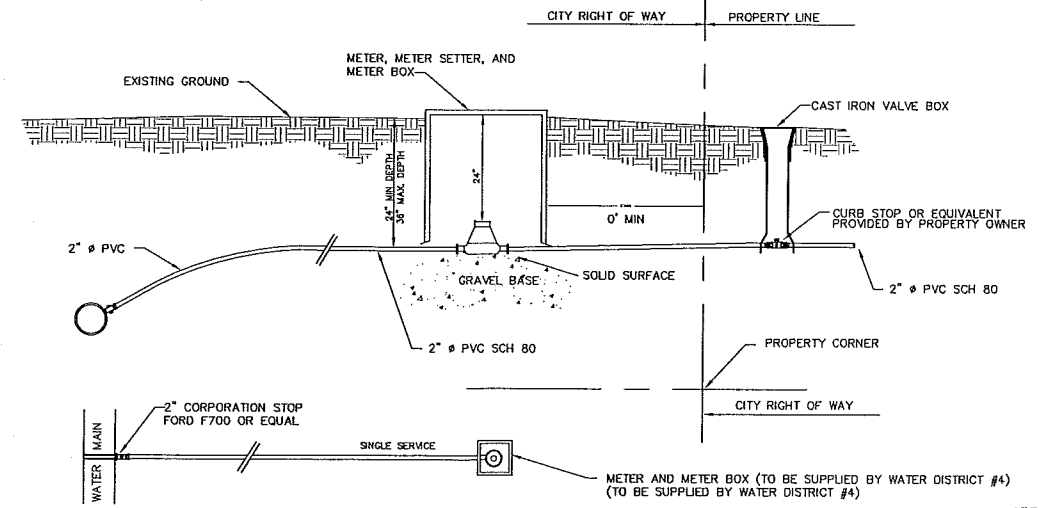
- SEWER LEGEND**
- BELOW FLOOR WASTE PIPING SCH 40 ABS TYPE DWV
 - 2" TYPE "K" ANNEALED "SOFT" COPPER WATER SERVICE
 - BELOW FLOOR VENT PIPING SCH 40 ABS TYPE DWV



18" x 48" BLOCKOUT DETAIL



(D-D) PROPOSED BUILDING SECTION
SCALE: H: NTS V: NTS



WATER SERVICE DETAIL
SCALE: H: NTS V: NTS

CALL BEFORE YOU DIG
1-800-424-5555

DESIGNED BY DLB/MLK
DRAWN BY LMC/MLK
CHECKED BY DLB



REICHARDT & EBE
ENGINEERING, INC.
CONSULTING ENGINEERS
PO Box 978 423 Front St., Ste 201 Ph (360) 354-3687
Lynden, Washington 98264 Fax (360) 354-0407

WHATCOM COUNTY PARKS AND RECREATION
3373 MOUNT BAKER HIGHWAY
BELLINGHAM, WA 98226

LILY POINT MARINE PARK
DETAIL SHEET

JOB# / DWG	DATE
10029 DET.V2004	5/12/11
SCALE	SHEET
H:n/a v:n/a	6 of 7

