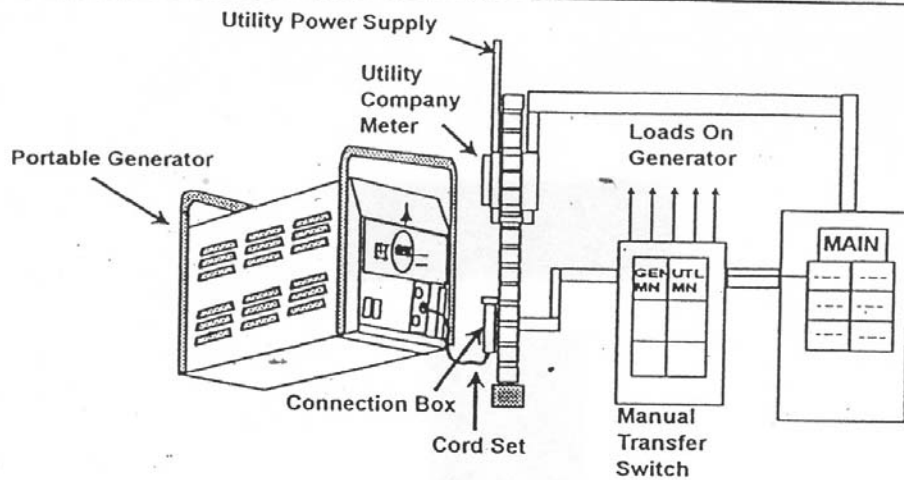
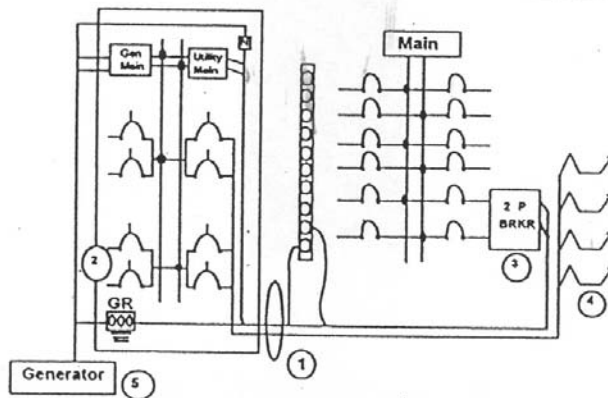


**INFORMATION SHEET *
GENERATOR DISCONNECT / MANUAL TRANSFER SWITCH**



Typical Use of a Portable Generator in an Emergency Power Application



Installation Instructions

- ① Install transfer switch next to existing panelboard using a conduit nipple to convey all the wires between the transfer switch and the existing panelboard. N.E.C. ART. 310; Item 8(A): Derating of conductors shall not comply to conductors in nipples having a length not exceeding 24 inches (610mm).
- ② Install the circuit breakers in the transfer panel for the lights and appliances that are needed on generator.
- ③ Install 2 pole circuit breaker in existing panelboard, matching the amps of the utility main in the transfer switch. Install proper conductors to transfer switch for utility main, neutral and ground.
- ④ Convey wires for the circuits from transfer switch to the existing panelboard. Remove conductors from the circuit breakers and splice to wires from transfer switch. N.E.C., ART. 374-5; If there are not more than 30 conductors in a cross section on each side of the panelboard breaker channels and if it does not exceed 20% of the fill.
- ⑤ Connect wires from generator according to local code in 3R box or WMTSMBL 1430 power inlet box.

*Work should be performed by a licensed electrician. Contact a licensed electrician or the Washington State Department of Labor & Industries for further information.