



Whatcom County

Developmental Disabilities Plan

2008-2012

Whatcom County Health Department
509 Girard St
Bellingham WA 98225

ACKNOWLEDGMENTS

This plan represents the culmination of months of work and dedication by professionals, community volunteers, and advocates. Special thanks to all of those who participated in the development of this plan, including those who participated in our needs assessment process through forums and surveys.

Thanks to:

Whatcom County 2008 Developmental Disabilities Advisory Board (DDAB)

Keith Hyatt, Co-chair
Kathleen Pate Co-chair
Donna Davis, Parent
Thomas Stanley, Community

Frances Armintrout, Advocate
Wendy Robinson, Community
Janet Jensen, WTA
Carl Weimer, County Council
Becki Cronk, Community/Educator

2008 Whatcom County Developmental Disabilities Planning Committee Members

Keith Hyatt: Co-chair DDAB
Kathleen Pate: Co-chair DDAB

Susan Jewell, Arc
Jan Driscoll, DSHS – DDD

Whatcom County Health Department

Regina Delahunt, Director
Terry Hinz, Assistant Director
Jessica Lee, Program Specialist, Developmental Disabilities

TABLE OF CONTENTS

Introduction	3
Planning	5
County Overview.....	6
The Service System	8
System Overview	9
Early Intervention Services	14
Transition	18
Employment	21
Community Access-Retirement.....	26
Information and Education	28
Glossary	31

INDEX OF CHARTS AND GRAPHS

#1. County Population.....	6
#2. County Population by ethnicity, 2000 census	6
#3 Unemployment rates	7
#4. DDD Enrolled Individuals	10
#5 Living situation by %	12
#6 Living situation by type.....	13
#7 Whatcom County Birth – Three Services	15
#8 Transition Students	19
#9. Adult Employment services 2002-2007.....	22
#10. Participation in County Services	23
#11 County Services by program type	23
#12 Community Access-retirement	26

INTRODUCTION

The role of the Whatcom County Development Disabilities (DD) program is to:

- Coordinate and provide local services to people with developmental disabilities and their families in collaboration with community partners
- Serve as an informational and referral agency within the community and
- Prepare comprehensive plans for present and future development of services.

The Developmental Disabilities Advisory Board (DDAB) advises and makes recommendation to the Whatcom County DD program.

For more information on the role of the County in providing local services to individuals with developmental disabilities please see RCW 71A.14

<http://apps.leg.wa.gov/RCW/default.aspx?cite=71A.14>

Vision

We envision a future where individuals with developmental disabilities have:

- Power and choice in making decisions and directing their lives;
- Meaningful relationships with people they love and care about, and who love and care about them;
- Opportunities for community involvement and recognition for community contributions;
- Resources and opportunities for support that meet individual needs;
- Healthy, safe, and productive lives.

Governing Principles:

Individualized Supports

We design services which are responsive, flexible and tailored to meet the changing needs and goals through the individual's life.

Diversity

We promote culturally appropriate services and supports and welcome all individuals to participate

Inclusion and Contribution

We promote inclusion and develop opportunities to participate in and contribute to the community.

Choice and self-direction

We support individuals to make their own decisions, and respect the decisions they make. We create opportunities for individuals to learn new things and to make informed choices based on their own experiences.

Community

We share responsibility for successful inclusion and participation with the community. We create collaborations within the community to develop local solutions

Dignity and respect

We promote respect, equality and dignity for everyone

Access

We promote individual and community accessibility

THE PLANNING PROCESS

The objective of the comprehensive plan is to provide information regarding developmental disabilities in Whatcom County. Goals and outcomes for County funded services were developed based on current needs identified during the planning process.

The planning process for the 2008-2012 Whatcom County Developmental Disabilities Plan included:

Community Surveys

Input was gathered through surveys to:

- Families of children age birth to three
- Adults with Developmental Disabilities
- Family members of school aged children with developmental disabilities
- Family members of adults with developmental disabilities
- Service providers
- Other Community stakeholders

Community Forum

A community forum was held during the regularly scheduled advisory board meeting in January 2007.

Advisory Board Participation

The board, through its committees, provided their invaluable input into the development of the County Plan, including the vision statement and governing principles.

Focus Group

A focus group with self-advocates through People First of Whatcom County was conducted.

Statistical Data Collection

Data was collected through DSHS/ Division of Developmental Disabilities, County DD program, the Infant toddler Early Intervention Program (ITEIP), Office of Financial Management, US Census, and Bureau of Labor Statistics

Whatcom County Overview:

Whatcom County is the 8th largest County in Washington State with an estimated population in 2008 of 191,000 people. As a “home rule” county we elect a County executive and a seven member County Council.

The largest incorporated city and the County seat, Bellingham, comprises approximately 40% of the total County population. Of those individuals enrolled with the Division of Developmental Disabilities (DDD) in Whatcom County, 59% reside within Bellingham.

The rate of population growth in Whatcom County is greater than the average for the State, seeing over a 21% increase between 1998 and 2008. The state average for that time was just under 16%.

Whatcom County population:

1998	1999	2000	2001	2002	2003	2004	2005	2006	2007	2008
157,500	164,282	166,826	170,600	172,200	174,500	177,300	180,800	184,300	188,300	191,000

Chart #1 Source: Office of Financial Management

Population Diversity

Whatcom County is less diverse than the state or the nation. According to the 2000 census, 86.2% of the population counted as white. Individuals enrolled with the State Division of Developmental disabilities (DDD) in Whatcom County show greater diversity than the County as a whole with 79% counted as white.

Population by race and ethnicity, 2000 Census Whatcom County

Ethnicity	Population
White non-Hispanic	143,842
African American	1,065
American Indian	4,396
Asian American	4,598
Pacific Islander	223
Hispanic	8,687
Other	349
multiracial	3,654
Total	166,814

Chart #2 Source, US Census

Whatcom County is home to two Native American Tribal governments, the Nooksack Tribe and the Lummi Nation.

Employment in Whatcom County

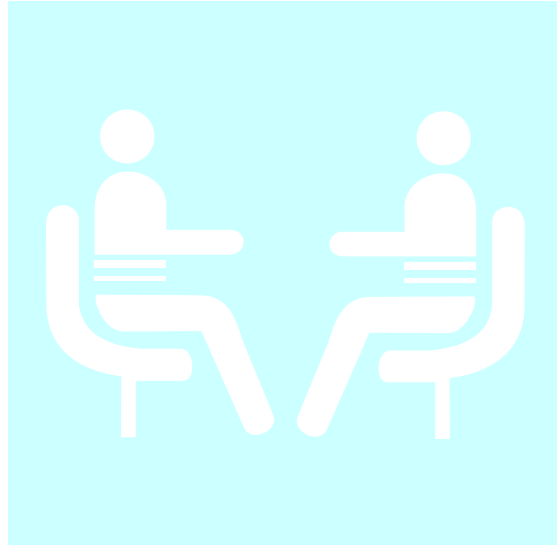
Since 2002, the average annual county unemployment rate has been below the state unemployment rate. The low jobless rate has attracted more people as the county population growth rate has exceeded the state growth rate by three percentage points since 2000. Job growth in the county has easily outpaced that of the state and the nation as a whole since 2000. Between 2000 and 2007, Whatcom County nonfarm wage and salary employment grew at an annual rate of 2.8 percent. Compare this annual rate of job growth to that of the state (1.1 percent) and the nation (0.6 percent).

Unemployment rate:

Unemployment rates	2001	2002	2003	2004	2005	2006	2007
Whatcom	6.5	6.8	6.7	5.7	4.9	4.6	4.2
State	6.2	7.3	7.4	6.2	5.5	4.9	4.6
U.S.	4.7	5.8	6.0	5.5	5.1	4.6	4.6

Chart #3 Source: Bureau of Labor Statistics

The Service System



Current Service System

Currently the developmental disabilities system represents a shared responsibility by both the State and the County.

The Washington State Division of Developmental Disabilities (DDD) assists individuals with developmental disabilities and their families to obtain services and supports based on individual preference, capabilities, needs, and which promote everyday activities, routines, and relationships common to most citizens.

DDD uses state and federal funds to provide or purchase supports and services for eligible persons and their families. Services are provided to the degree that funding is available through state legislative appropriations and local designated dollars.

All day program services (including early intervention services for children 0-3 and employment and community access-retirement services for adults 21 and over) are provided through state contracts with each county.



The state provides:

- Responsibility for determining eligibility
- Case resource management services
- State institution services
- Managing residential services
- Eligibility for Medicaid personal Care services
- Family support services
- Home and Community Based “Waiver” services (the “Waiver” allows Washington to serve individuals in their home communities who might otherwise live in an institutional setting.)



The County Provides

- Early Intervention Services for children ages 0-3
 - Employment and Pathway to employment for adults 21 and older
 - Community Access retirement services for adults 62 and older
 - Information and Education
 - Planning for the development of future services
-

In January, 2007 there were 937 individuals of all ages with a developmental disability enrolled with the State Division of Developmental Disabilities in Whatcom County. The number of individuals enrolled in DDD services in Whatcom has increase by 24% since 2002. This increase may partly reflect eligibility changes for children aged birth to three.

Individuals Enrolled with DDD in Whatcom County

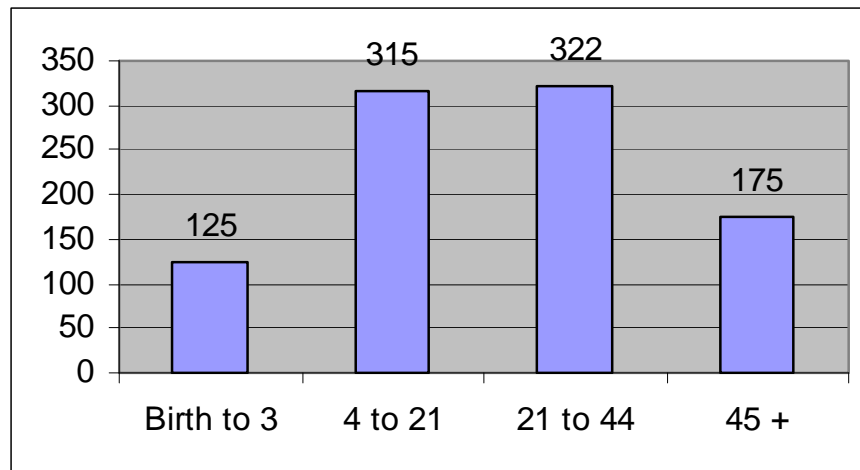


Chart #4: Source: DSHS/DDD, January 2007

Population Served

In Washington State a developmental disability is defined in state law as a disability attributable to:

- Mental retardation
- Developmental delay (Ages birth to six)
- Cerebral palsy
- Autism
- Epilepsy
- Another neurological or other condition closely related to mental retardation

The disability must also:

- Originate before the age of eighteen
- Expect to continue indefinitely
- Result in substantial limitations to an individual's adaptive functioning.

Definitions of Disabling Conditions

Below is a summary of disabling conditions defined by the State Division of Developmental Disabilities. Eligibility requirements differ depending on the age of the individual. For full eligibility criteria please contact the local DDD office (360-714-5000) or refer to Washington Administrative Code (WAC) 388.823 <http://apps.leg.wa.gov/WAC/default.aspx?cite=388-823>

- **Mental Retardation**— Eligibility under this condition requires significantly below average intellectual and adaptive skills functioning that will not improve with treatment, instruction or skill acquisition.
- **Developmental Delay (0-10)**—Eligibility under this condition requires a delay of at least 25% of the child's chronological age, in one or more of the following areas as measured by qualified personnel: physical, cognitive, communication, social or emotional, or adaptive.
 - 0 to 3 years: a delay of at least 25% in **one** or more of the five areas
 - 3 to 10 years: a delay of at least 25% in **three** or more of the five areas
- **Cerebral Palsy**—Eligibility under this condition requires a diagnosis by a licensed physician of cerebral palsy, quadriplegia, hemiplegia, or diplegia with symptoms that: (1) Existed prior to age three; and (2) Impair control of movement.
- **Autism**—Eligibility under this condition requires a diagnosis by a qualified professional of autism or autistic disorder (defined by the state) that is expected to continue indefinitely, with evidence of onset before age three. Eligibility also includes criteria related to social interactions; communication; and restricted repetitive and stereotypical patterns or behavior, interests, and activities.
- **Epilepsy**—Eligibility under this condition requires a diagnosis of a neurological condition that produces brief disturbances in the normal electrical functions of the brain resulting in seizures. Seizures must be physically incapacitating, requiring direct physical assistance for one or more activities as defined by the State.
- **Another neurological or other condition**—Eligibility in this area requires a neurological or other condition found by DDD to be closely related to mental retardation or requiring treatment similar to that required for individuals with mental retardation.

Where are adults with developmental disabilities living?



Approximately 39% of adults with developmental disabilities in Whatcom County continue to live in their family's home after the age of 18. Medicaid personal care (MPC) dollars are available to support income eligible individuals who have assessed, unmet personal care needs in the family home.

Division of Developmental Disabilities (DDD) Case managers determine the level of need for personal care services through assessment in addition to being the referral source for all residential placements.

The remaining 61% of clients live either on their own or with supports coordinated through the Division of Developmental Disabilities.

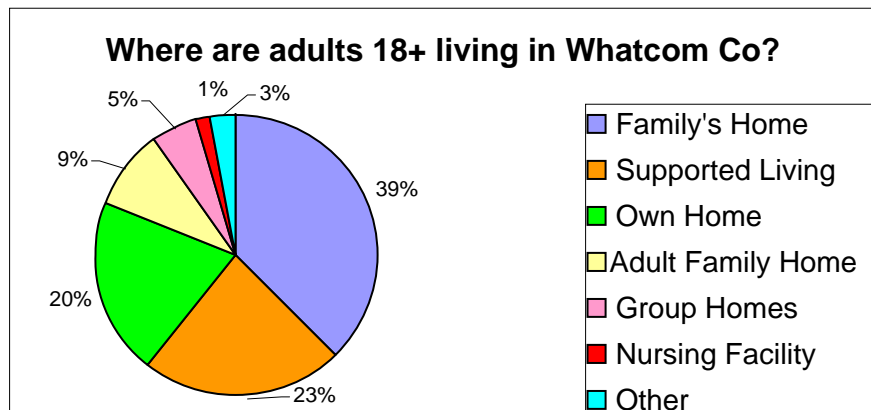


Chart #5 Source: DSHS/DDD, January 2007

Residential Definitions:

Supported Living (SL)

Instructions and supports offered by service providers contracted directly with the Division of Developmental Disabilities (DDD) to clients who live in their own homes. Homes are owned, rented, or leased by the clients or their guardians.

Group Homes (GH)

Living with other people in a home run by an agency where you can receive 24-hour supervision and training. A group home is contracted directly through DDD to provide residential services.

Nursing Facility (NF)

Living in a skilled nursing home that provides 24-hour nursing services. Nursing Facilities are licensed by the Washington State Aging and Disability Services Administration (ADSA).

Adult Family Home (AFH)

Living in a home serving no more than 6 people that provides assistance, room, and board. AFH's are licensed by the Aging and Disability Services Administration (ADSA.)

Residential setting for individuals 18+ in Whatcom County

Living Situation	# of Individuals 18+
Family's Home	210
Supported Living	129
Own Home	114
Adult Family Home	52
Group Home	29
Nursing Home	8
Homeless	1
Other	16
Total	559

Chart #6 Data source: DSHS/DDD January 2007



Early Intervention Services

Early Intervention Services provide services to children ages birth to three with developmental disabilities and delays and their families.

The term “Early Intervention Services” means developmental services designed to:

1. Reduce delays and support the child’s development
2. Increase the ability of parents and caregivers to enhance the developmental progress of their children and promote quality parent-child interactions and relationships.
3. Integrate children with developmental disabilities in natural environments and/or typical settings with children without developmental disabilities.

Early Intervention Services are most often provided as part of the child and family’s daily routines, which can include the home or community settings where families live, work and play. Services are individualized for each child and family based on documented need determined necessary by their “team”. Family Resources Coordinators (FRC) help the family coordinate services and build the team of professionals that will work with the child and family.

The team, working with the family’s priorities, documents the services and supports the child will receive in the Individualized Family Services Plan. (IFSP)

Services available, based on identified need include:

- ◆ Assistive technology services
- ◆ Family training
- ◆ Nursing services
- ◆ Occupational therapy
- ◆ Psychological services
- ◆ Special instruction
- ◆ Medical services for diagnostic or evaluation purposes
- ◆ Transportation and vision services
- ◆ Audiology
- ◆ Counseling and home visits
- ◆ Nutrition services
- ◆ Physical therapy
- ◆ Social work services
- ◆ Speech-language therapy

The Infant Toddler Early Intervention Program (ITEIP) is housed locally at the Opportunity Council, and is the lead agency responsible for coordinating Early Intervention Services in Whatcom County. In addition to ITEIP, the County, school districts as well as public and private insurance programs provide funding for Early Intervention services.

Whatcom County children (0-3) served through ITEIP and County DD

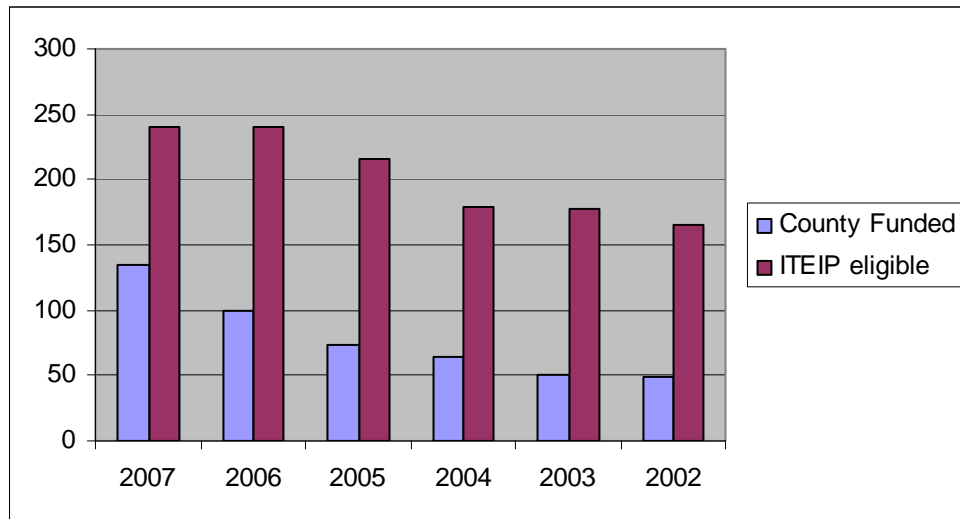


Chart #7 Data Source: County DD Program and ITEIP

Currently, ITEIP eligibility criteria differ from those established by DDD for County funded services. This means that although DDD eligible children are eligible for ITEIP, the reverse is not always true.

In 2007, 241 ITEIP eligible children received Early Intervention Services in Whatcom County. Of those, 135 infants and toddlers received County funded Early Intervention Services.

Trends:

- The number of children receiving county funded services increased by over 176% between 2002 and 2007. Changes in DDD eligibility standards in 2005 increased the number of children eligible for County funding, and are partly responsible for the significant increase. County funding for birth to three services has remained substantially the same since 2002.
- The number of children eligible for the Infant Toddler Early Intervention Program increased 45% between 2002 and 2007. ITEIP funding for birth to three services has remained substantially the same since 2002.

- The primary increase in public funding since 2002 for early intervention services has been through school districts. Under state law, by the fall of 2009 all school districts in Whatcom County and across the state should be participating. School Districts can participate in Early Intervention Services by providing services directly, contracting for services, or a combination of the two.
- In 2007 19% of children in Whatcom County receiving early intervention, no longer tested eligible for special education services upon transition at age 3**

***For more data on Early Intervention Services in Washington State please see the Washington State ITEIP database and website.*
http://www1.dshs.wa.gov/excel/adsa/iteip/CDFY07/8_TD_noserv06-07.xls

2008-2012 Early Intervention Services

Inputs	Activities	Outputs	Outcomes	Goals
<p>The Whatcom County Health Department uses the following resources:</p> <p><u>Staff</u></p> <p><u>Funding</u></p> <ul style="list-style-type: none"> • DSHS/DDD Funds • Millage Funds <p><u>Systems partners</u></p> <ul style="list-style-type: none"> • Contractors, EIS Service Providers • School Districts • DD Advisory Board • Infant Toddler Early Intervention Program (ITEIP) • DSHS/Division of Developmental Disabilities (DDD) • Whatcom Interagency Coordinating Council (WICC) 	<ul style="list-style-type: none"> • Early Intervention Services (EIS) for Children birth to three years. • Cross systems coordination and planning • Training and technical assistance • Parent support services through Parent-to-parent 	<ul style="list-style-type: none"> • 50-60% of ITEIP eligible children receive some County funded Early Intervention Services annually (135 children in 2007) • 18-20% of ITEIP eligible children receiving services no longer need specialized education by the time they turn 3 years of age. (19% in 2007) 	<ul style="list-style-type: none"> • Increase the % of children who no longer need specialized education by the time they turn 3 years of age. • Increase service capacity to provide effective early intervention services to children in natural environments 	<ul style="list-style-type: none"> • Parents and caregivers of children with developmental disabilities and delays effectively support their child's development during everyday routines and activities • Development of a coordinated early intervention service and funding system in Whatcom County

School Transition



At the age of three, children and families receiving early intervention transition from services coordinated by the Infant Toddler Early Intervention Program to Special Education Services coordinated by the school system. Public Schools are mandated by federal law through the Individuals with Disabilities Education Act (IDEA) Part B to provide services for eligible children ages 3-21.

Public school services are entitlements. Entitlements ensure that citizens receive services for which they are eligible.

Transition to School

A transition plan meeting must take place at least 90 days before a child receiving early intervention services turns three. The family resource coordinator (FRC) will assist the family in planning and identifying special education or community-based services the child may need.



The family resource coordinator, service provider, and local school district then meet to discuss eligibility and services. If the child is eligible for services, those services will be provided through an Individual Education Plan (IEP). A % of children no longer test as eligible for special education by the time they transition from early intervention services at age three.



Transition from High School

Unlike services through the school district, most adult services available to graduating young adults are not entitlements. Adult service agencies typically have eligibility requirements and, because of limited funding, cannot always immediately offer services to eligible individuals.

Planning for ongoing support prior to exiting school is key to successful transition. Transition services through the school district are available for students starting at 14, and the law mandates that transition planning be incorporated into the Individual Education Plan (IEP) no later than 16.

Trends:

- Adult Employment Services for those students graduating or aging out at age 21 has relied upon per student funding by the Washington State Legislature.
- Since 2002, the County has funded on average 40% of transitioning graduates for long term employment services.
- Information initiatives focused on transition from school to work and adult life has been identified as a priority by the Whatcom County DD program and its Advisory Board.

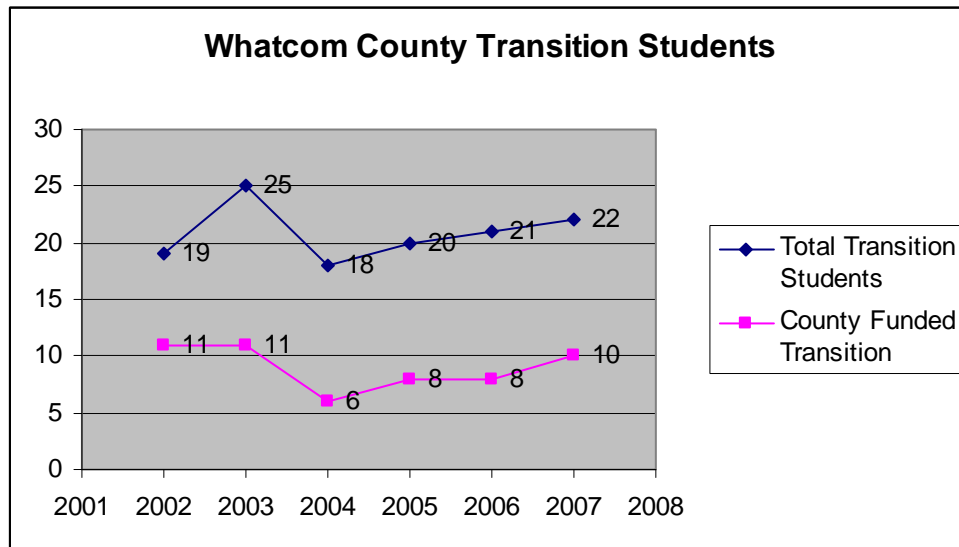
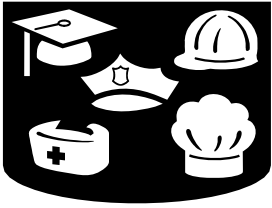


Chart #8 Source: DSHS/DDD

2008-2012 Transition from School to Work and Adult Life

Input	Activities	Outputs	Outcomes	Goals
<p>The Whatcom County Health Department uses the following resources:</p> <p><u>Staff</u></p> <p><u>Funding</u></p> <ul style="list-style-type: none"> • DSHS/DDD Funds • Millage Funds • Jobs by 21 grant <p><u>Systems partners</u></p> <ul style="list-style-type: none"> • Contractors • DSHS/Division of Vocational Rehabilitation (DVR) • DSHS/Division of Developmental Disabilities (DDD) • School Districts • DD Advisory Board • Community and Business 	<ul style="list-style-type: none"> • County wide Transition Fair • Develop and publish transition materials <ul style="list-style-type: none"> -Resource Guide -Stories of Transition -Transition Brochure • Collaborate between school districts, vocational agencies, DVR, DDD and other Community partners to plan for effective transition • Provide assistance and training as requested by school districts and service providers related to employment and transition. 	<ul style="list-style-type: none"> • 200-250 individuals with disability, educators, community members and family participate in the annual Transition Fair • Participation from all school districts and tribal schools in County-wide transition activities. • 42-45% of graduating students enrolled with DDD leave school with a job at age 21 	<ul style="list-style-type: none"> • Increase the % of graduates who leave school at 21 with a job 	<ul style="list-style-type: none"> • Individuals with Developmental Disabilities Leave School with a job at age 21 • Individuals and their families have identified resources needed to successfully support the individual with a disability in work and community life after school has ended

Pathways to Employment



Who do we support?

Individuals who are eligible with the Division of Developmental Disabilities, have finished high school and who are age 21 or older

The focus of County funded services is employment in typical community businesses and industry. Employment offers all individuals with or without disabilities the opportunity for contribution, economic self-sufficiency, and social connection.

What Services are available?

The Division of Vocational Rehabilitation (DVR) is the first resource for accessing short-term vocational assessment, placement, and training. Once initial services have been provided through DVR, an individual must rely on their own skills to maintain themselves on the job. For those still needing assistance to obtain or maintain employment the County provides long term supports for employment

Person centered Planning: Services assist individual's to identify interests and skills and develop strategies and goals for pursuing employment. A trained facilitator assists the individual and his/her support team in this process. A person centered plan in particular is helpful for those who are unsure of what type of employment might be right for them.

Person-to-person (PTP) Services are designed to support each individual to pursue his or her own unique path to work, a career, or contribution to and participation in community life. All individuals, regardless of the challenge of their disability, will be afforded an opportunity to pursue employment. In 2007 89 individuals received Person-to-person Services.

Individual Employment (IE)

Services are designed to help an individual obtain or continue employment in individual jobs in business or industry. These services may include assistance

with the job selection process, initial placement and training at the work site, working with employers and other employees, or assisting the worker to obtain other services necessary for continued employment. The majority of those employed experience significantly higher wages and integration at work compared to other employment options. In 2007 121 individuals received IE services.

Group Supported Employment (GSE) Provides supervised paid training opportunities performed at business sites in groups of eight or fewer employees with disabilities. Group Supported Employment can be an enclave— groups of individuals placed in a business or industrial site—or a mobile crew. In 2007 29 individuals received services in this setting.

Prevocational Services (also referred to as Specialized Industry or Sheltered Workshop) are provided by businesses that were organized and designed primarily to provide training opportunities for adults with disabilities. Prevocational services differ from Group Supported Employment in that larger groups of people are employed in the same setting. This category of employment is utilized within the county to provide support and training for individuals with significant barriers to employment in community settings. Referrals are limited. In 2007, 48 individuals received facility based employment services. This number was reduced to 21 in January 2008 with the closure of one of the two remaining workshops.

Employment Services 2002-2007 Whatcom County

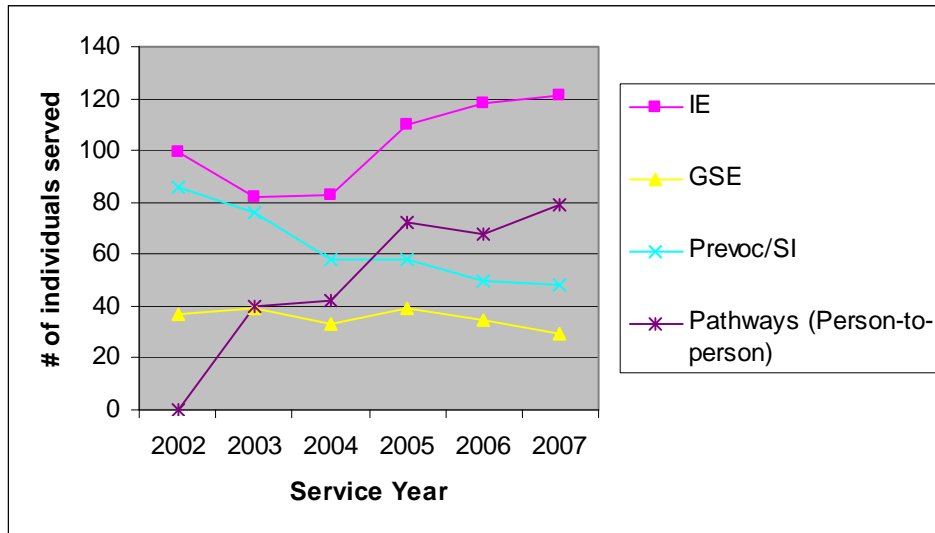
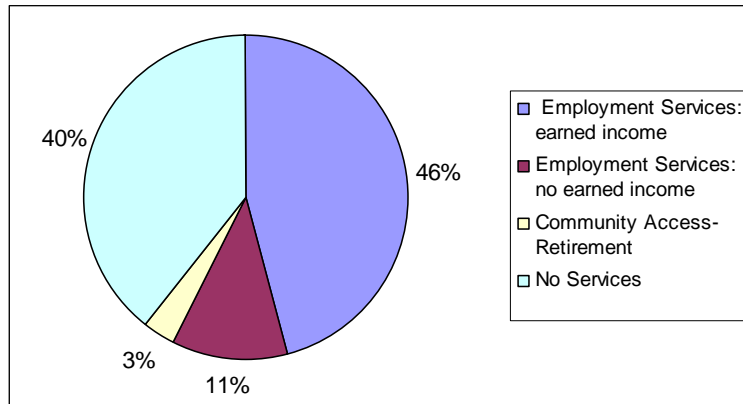


Chart #9 Source: County, DSHS/DDD

Participation in County Employment/Retirement Services



Chart#10 Source: County-DSHS/DDD

Employment/ Retirement Services by Program Type

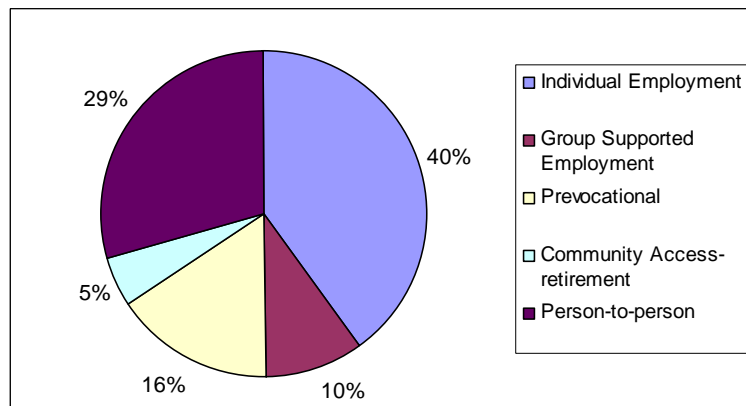


Chart #11 Source: County-DSHS/DDD

Trends:

- The number of County funded adults with developmental disabilities documented as earning wages increased by 26% between 2005 and 2007 with the implementation of the working age policy.
- Downsizing and closure of sheltered workshops has significantly reduced the numbers of individuals served in prevocational and specialized Industry settings.
- With the implementation of the working age adults policy in 2007, services for all clients of working age (21-62) must have a focus on achieving employment in community settings.

- The Division of Vocational Rehabilitation (DVR) began reducing and eliminating its waiting list, also known as the “order of selection” in 2006. This has increased the number of individuals with developmental disabilities supported to achieve employment outcomes.
- The County, under direction from the state Division of Developmental Disabilities (DSHS/DDD), began a waiting list for services in April of 2006. Those individuals on the waiting list for County employment services are primarily “state-only” funded individuals who have completed DVR services without a successful job placement. State-only funded individuals are those individuals who are not receiving services through the DSHS/DDD federal waiver program.

2008-2012 Pathways to Employment

Inputs	Activities	Outputs	Outcomes	Goals
<p>The Whatcom County Health Department uses the following resources:</p> <p><u>Staff</u></p> <p><u>Funding</u></p> <ul style="list-style-type: none"> • DSHS/DDD Funds • Millage Funds <p><u>Systems partners</u></p> <ul style="list-style-type: none"> • Contractors • Division of Vocational Rehabilitation (DVR) • Tribal Vocational Rehabilitation • Division of Developmental Disabilities (DDD) • Dept. of Services for the Blind • DD Advisory Board • Community and Business 	<ul style="list-style-type: none"> • Person centered employment planning • Employment and community services designed to achieve individual pathway to employment goals including: Job development, assessment, work experience, training, volunteering, job coaching • Training and assistance to providers in serving individuals with more significant and/or complex support needs. 	<ul style="list-style-type: none"> • Approximately 56-59% of adults 21+ enrolled with DDD in Whatcom County receive County funded pathway to employment services annually. (277 adults in 2007) • Approximately 75-80 % of County funded adults 21+ earn wages annually (222 in 2007) 	<ul style="list-style-type: none"> • Increase the % of County funded adults 21+ earning wages annually. • Increase the opportunities available for individuals with developmental disabilities to be included in work and community life. • Increase community capacity to serve individuals with more significant support needs in community settings. 	<ul style="list-style-type: none"> • Individuals with Developmental Disabilities earn sufficient income to meet their individual needs. • Individuals with developmental disabilities work in inclusive community settings that fit their goals skills and interests. • Individuals with Developmental Disabilities build networks of natural supports and relationships in the workplace.

Community Access-Retirement

Community Access-Retirement

These services are designed for individuals aged 62 and older to assist them in participating in community activities of their choice, typical to others of retirement age. Community supports are developed with emphasis on each individual's needs and interests. In 2007, **15** individuals received Community Access-retirement services.

Community Access-Retirement Services in Whatcom County

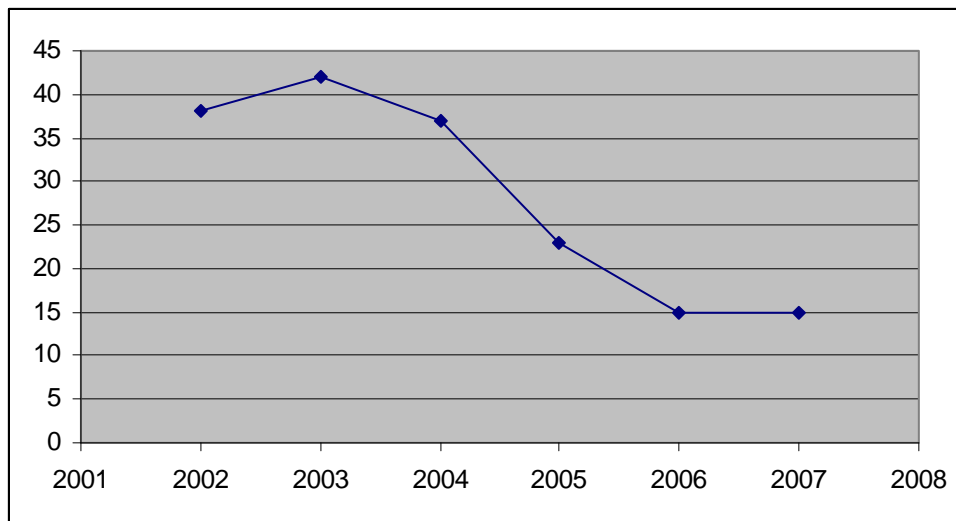


Chart #12 Source: County & DSHS/DDD

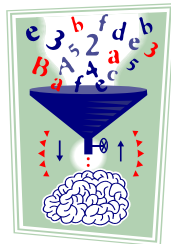
Trends:

- The number of individuals receiving Community Access has substantially declined with the implementation of the DSHS/DDD Working Age Adults policy. (Policy # 4.11) For more information on the policy see: <http://www.dshs.wa.gov/pdf/adsa/ddd/policies/policy4.11.pdf>
- Most individuals of working age who previously received Community Access services are now served in person-to-person, with services focused on attaining their pathway to employment goals.

2008-2012 Community Access-Retirement

Input	Activities	Output	Outcomes	Goals
<p>The Whatcom County Health Department uses the following dedicated resources:</p> <p><u>Funding</u></p> <ul style="list-style-type: none"> • DSHS/DDD Funds <p><u>Systems partners</u></p> <ul style="list-style-type: none"> • Contractors • DD Advisory Board • Whatcom County Council on Aging 	<ul style="list-style-type: none"> • Community Access services provide supports for individuals 62+ to participate in activities similar to others of retirement age. • Provide training and technical assistance related to aging and developmental disabilities 	<ul style="list-style-type: none"> • 15-20 individuals with developmental disabilities 62+ receive Community Access retirement Services in Whatcom County 	<ul style="list-style-type: none"> • Increase the effective inclusion and participation of older adults in community life. • Increase the understanding of the impacts of aging on individuals with developmental disabilities 	<ul style="list-style-type: none"> • Older individuals with disabilities receive the individualized supports they need to safely enjoy activities of their choosing in the community.

Community Information and Education



One of the roles of the County, as described under RCW 71A.14 is to serve as an information and referral agency within the community for persons with developmental disabilities and their families. The County, through its contract with DDD, and through local resources, supports the following information and education efforts.

The Arc of Whatcom County: 715-0170

The mission of the Arc is to improve the quality of life, increase the independence, and assure the full inclusion in the community of all persons with developmental disabilities. The Arc provides information and support around such topics as guardianships and long-term planning; special health care needs; special education services, including IEP's and transition planning; residential issues and concerns; advocacy; and self-determination. The Arc website: <http://www.arcwhatcom.org/>

Programs of the Arc include:

- **The Parent Coalition:** The coalition produces a monthly newsletter, assists with systems navigations and provides training opportunities for individuals and families throughout the year.
- **Youth-Self Advocacy Group:** For young adults aged 16 and older to explore speaking and advocating for themselves
- **Safety Awareness Group:** For young adults 18+ to explore issues related to safety and sexuality.

- **Parent/Caregiver Support Group:** For family members and caregivers of individuals with developmental disabilities
- **Local Leadership Group:** 18 month training opportunity for family members and self-advocates to learn leadership and advocacy skills.

Parent-to-Parent: 360-255-2056

This program provides emotional support and information to families of children with special needs and/or disabilities. Parent-to-Parent produces a newsletter, maintains a support group, and provides training for parents and siblings of children with developmental disabilities. Parent-to-Parent is a program of Whatcom Center for Early Learning.

People First: Self-advocacy organization designed to promote self-determination of individuals with developmental disabilities. Individuals learn and practice skills to live quality and fulfilling lives directed by their own wants and needs.

Whatcom Health Department, Developmental Disabilities Program

The County DD program has developed the following resources, available on-line or by contacting the health department at 360-676-6724 ext. 32014 http://www.co.whatcom.wa.us/health/human/develop_disabilities

- Transition Resource Guide
- Transition Brochure
- Stories of Transition
- Pathway to Employment Guide

In addition the County provides information and training to service providers and the community to more effectively serve individuals with developmental disabilities.

Information on eligibility and state programs and supports are available through the local office of the Division of Developmental Disabilities.(DDD) **360-714-5000 or 1-800-239-8285**

2008-2012

Community Information and Education

Input	Activities	Output	Outcomes	Goals
<p>The Whatcom County Health Department uses the following dedicated resources:</p> <p><u>Funding</u></p> <ul style="list-style-type: none"> • DSHS/DDD Funds • Millage Funds • Family Support Grant <p><u>Systems partners</u></p> <ul style="list-style-type: none"> • Contractors • School Districts • DD Advisory Board • Whatcom Interagency Coordinating Council • Division of Developmental Disabilities (DDD) 	<p><u>Information, Education and Referral</u></p> <ul style="list-style-type: none"> • Parent Coalition: Newsletter, e-mail alerts, 1:1 assistance and advocacy, community inclusion presentations • Training and assistance to individuals, family and the community related to system navigation and advocacy. <p><u>Training and education for individuals with DD</u></p> <ul style="list-style-type: none"> • Safety awareness and sexuality class • Youth self-advocacy group • Life Skills Classes <p><u>Parent Support</u></p> <ul style="list-style-type: none"> • Parent/caregiver support Group • Parent-to-parent 	<ul style="list-style-type: none"> • 900-1000 Individuals, family, educators and community members will receive information, education, training and referral related to developmental disabilities • 50-60 individuals with disabilities will receive training and education • 700-720 parents and caregivers will participate in parent support services, or receive information related to these services. 	<ul style="list-style-type: none"> • Increase individual and family effectiveness in navigating the developmental disabilities service system. • Increase the ability of individuals with developmental disabilities to advocate for themselves and what they want/need. • Increase the peer supports available for parents and caregivers of individuals with developmental disabilities. 	<ul style="list-style-type: none"> • The needs of individuals with developmental disabilities and their families are met through individualized services and supports. • Individuals with developmental disabilities are fully included and participate in community life.

GLOSSARY

ADA	Americans with Disabilities Act
CA	Community Access-Retirement Services
DDAB	Developmental Disabilities Advisory Board
DDD	Division of Developmental Disabilities
DEVELOPMENTAL DISABILITY	A disability attributable to mental retardation, cerebral palsy, epilepsy, autism, another neurological or other condition closely related to mental retardation. Originates before age 18. Is expected to continue indefinitely and results in substantial limitations to an individual's adaptive functioning.
DSHS	Department of Social and Health Services
DVR	Division of Vocational Rehabilitation
FRC	Family Resource Coordinator
GSE	Group Supported Employment
ICC	Interagency Coordinating Council
IDEA	Individuals with Disabilities Education Act
IE	Individual Employment
IEP	Individual Education Plan
IFSP	Individual Family Service Plan
ITEIP	Infant Toddler Early Intervention Program
PTP	Person-to-person
RCW	Revised Code of Washington (State Law)
WAC	Washington Administrative Code
WTA	Whatcom Transportation Authority