

**Whatcom County Weekly Influenza Report
2009-2010 Pandemic H1N1 Influenza Season
2010 Week 4, ending Saturday, January 30**

Summary:

Whatcom County

During 2010 week 4, Influenza activity in Whatcom County remained at a low level. There were no lab confirmed flu-related hospitalizations. Although the volume of testing at the lab was similar to last week, there were no positive tests for H1N1 reported. Clinic outpatient visits for influenza-like illness (ILI) were slightly increased from the low level of the previous week. School absenteeism rates continue to be low. Two deaths of Whatcom residents with lab-confirmed influenza have occurred this season, both in people over 65 with high-risk medical conditions.

Note: Washington State, CDC, and British Columbia CDC reporting is for Week 3, ending Jan 30.

Washington State

Week 3 (January 24 -30): Influenza virus continues to circulate in Washington State at a very low level. The proportion of outpatient visits for influenza-like illness (ILI) is below the regional baseline. Less than 5% of the specimens tested by collaborating laboratories in Washington were positive for influenza. All subtyped influenza A viruses were 2009 influenza A (H1N1) viruses. Since September 19, 2009, DOH reports 1383 hospitalized and 76 fatal influenza cases.

National

Week 3 (January 24 -30) influenza activity remained at approximately the same levels this week in the U.S. The proportion of outpatient visits for influenza-like illness was 1.7% which is below the national baseline of 2.3%. All but two regions were below their region specific baseline. Regions 4 and 9 reported ILI equal to their region-specific baseline. No states reported widespread influenza activity. Influenza positive tests reported to the CDC by collaborating laboratories remained a very low level. Laboratory confirmed influenza hospitalizations were down from the previous week. The proportion of deaths attributed to pneumonia and influenza (P&I) remained above the epidemic threshold and increased slightly. From August 30, 2009 – January 23, 2010, 39,386 laboratory-confirmed influenza-associated hospitalizations and 1,850 laboratory-confirmed influenza-associated deaths were reported to CDC. All subtyped influenza A viruses reported to CDC were 2009 influenza A (H1N1) viruses.

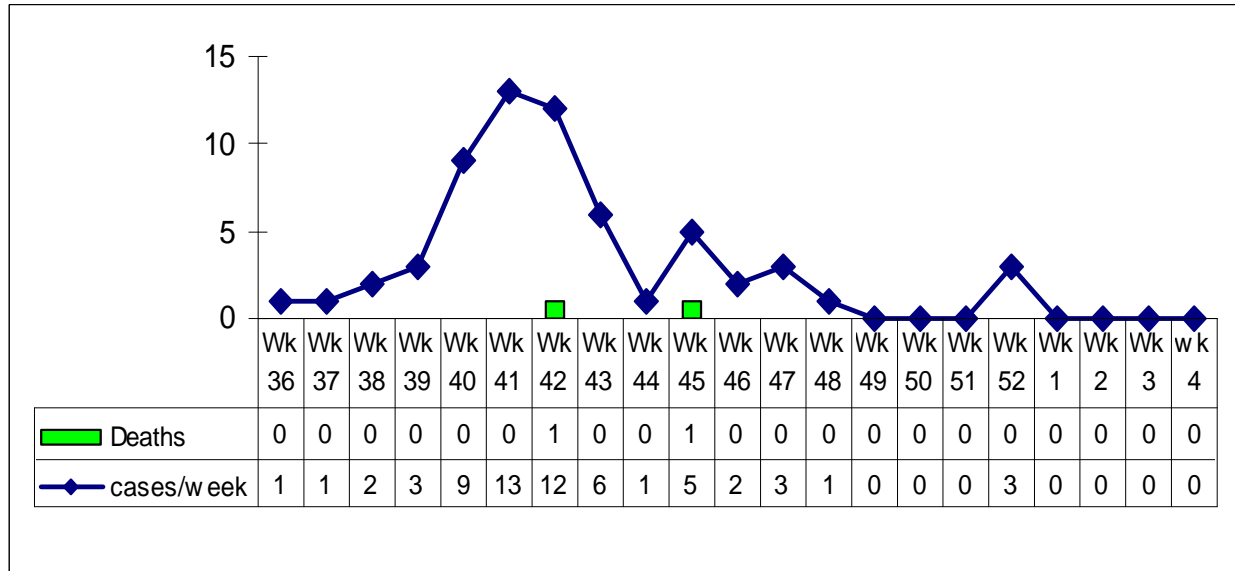
British Columbia

Week 3 (January 24-30): Surveillance indicators continued to suggest low levels of influenza activity in the province. The proportion of patients presenting to sentinel physicians with ILI and Medical Services Plan claims for influenza illness both remained lower than expected for this time of year. One ILI outbreak was reported in a school. No influenza outbreaks were reported in facilities. At the BC Provincial Laboratory, no influenza viruses were detected, while 35% (19/54) of specimens tested for other respiratory viruses. Thus, acute respiratory illness for which respiratory virus testing is sought in BC is more likely to be due to a non-influenza cause.

Whatcom County Influenza Hospitalizations and Deaths

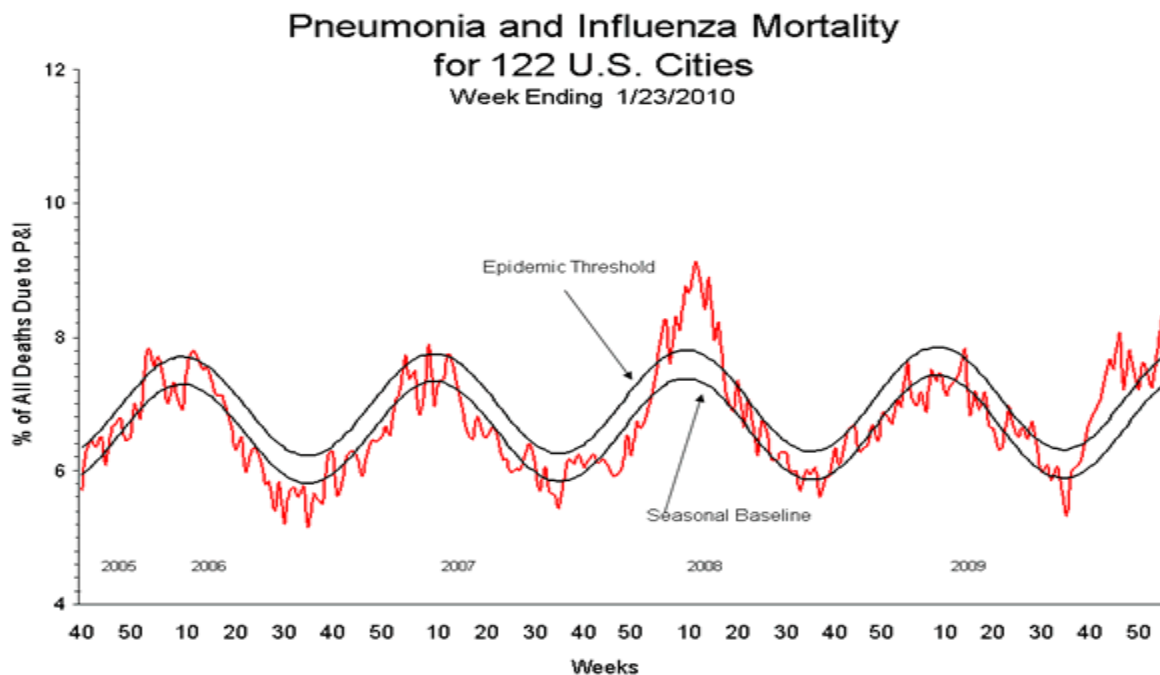
Whatcom residents, influenza lab confirmed hospitalizations by date of admission and influenza associated death by date of report. Results may vary from prior weeks as new reports are received.

Whatcom Influenza Weekly Case Count since 9/1/2009 Total=62



Pneumonia & Influenza Mortality

The CDC chart of P&I mortality is included below for reference. During week 3, 8.3% of all deaths reported through the 122-Cities Mortality Reporting System were due to P&I. This percentage was above the epidemic threshold of 7.7% for week 3, and is the second consecutive week that the percentage of P&I deaths has been above the epidemic threshold.



Outpatient Visits

Two Whatcom County medical practices are CDC Sentinel Influenza Surveillance sites and report weekly the number of patients seen and number of those with influenza-like illness (ILI).

Week	50	51	52	1	2	3	4
End date	12/19/12	12/26/19	01/02/10	01/09/10	01/16/10	01/23/10	01/30/10
Clinic A							
Total visits	na	na	na	350	427	399	na
% ILI*				0	0.5%	0.3%	
Clinic B							
Total visits	63	32	59	84	74	70	91
% ILI*	0	3.1%	8.5%	1.2%	4.1%	0	2.2%

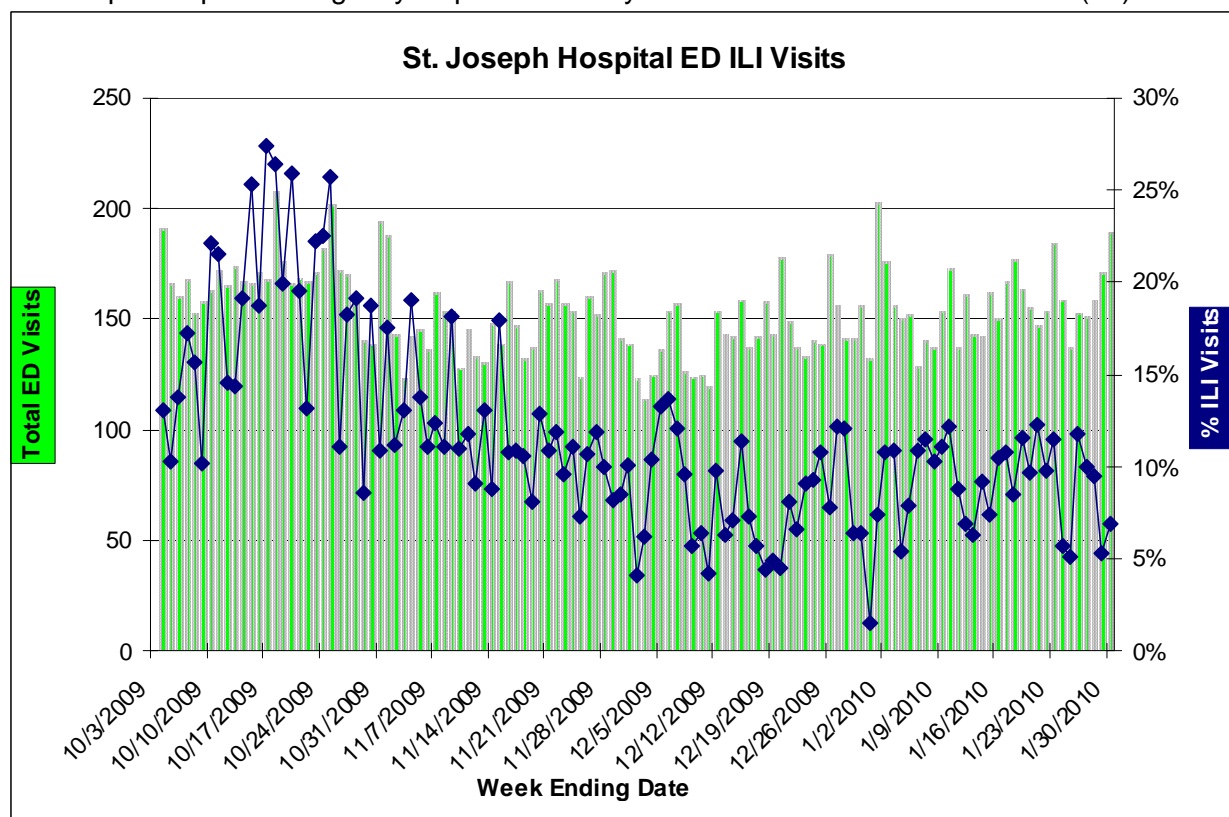
* Fever $\geq 100^{\circ}$ F with cough or sore throat without other explainable cause

Group C has been tracking daily total primary care appointments (including urgent care) and ILI visits as defined by presentations of symptoms to receptionist upon check-in for appointment.

Week	50	51	52	1	2	3	4
End date	12/19/09	12/26/09	01/02/10	01/09/10	01/16/10	01/23/10	01/30/10
Group C							
Total Visits	3395	2115	2472	3303	3034	2833	2301*
% ILI	3.2%	2.5%	5.5%	2.6%	2.6%	2.4%	4.7%

* 5 days 1/24-28

St. Joseph Hospital Emergency Department daily visits due to influenza-like illness (ILI)**



** Fever and/or cough, sore throat, congestion, body aches, COPD or asthma exacerbation when symptoms include fever &/or respiratory conditions without other explainable cause. Since 11/01, ILI is documented at discharge from the ED. Earlier weekly reports used chief complaint upon admission.

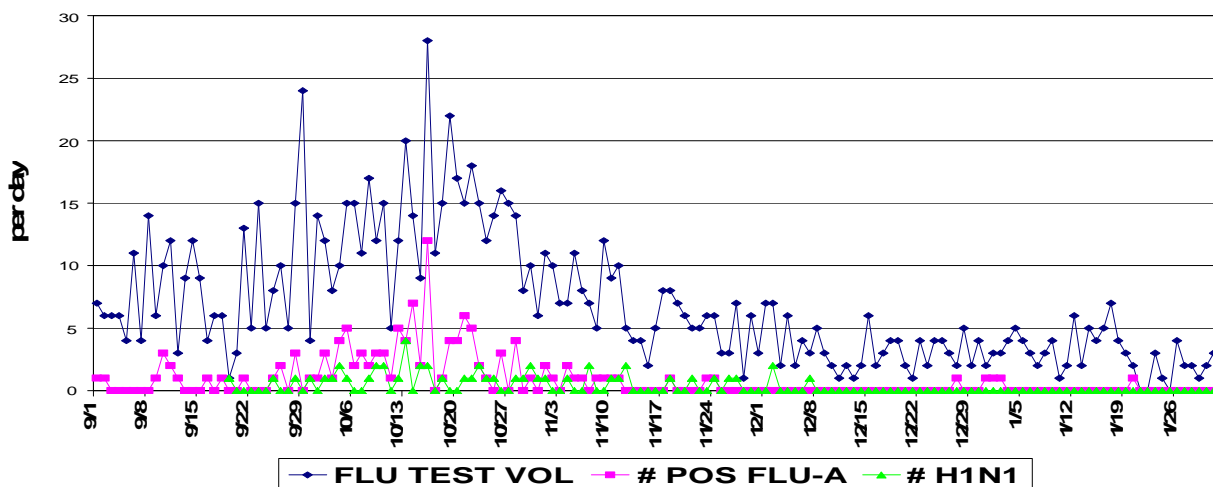
Laboratory Data

The total number of influenza tests and the percentage positive for influenza is an indicator of influenza activity in the community. Respiratory Syncytial Virus (RSV) testing provides an indicator of other causes of viral respiratory illness in the community.

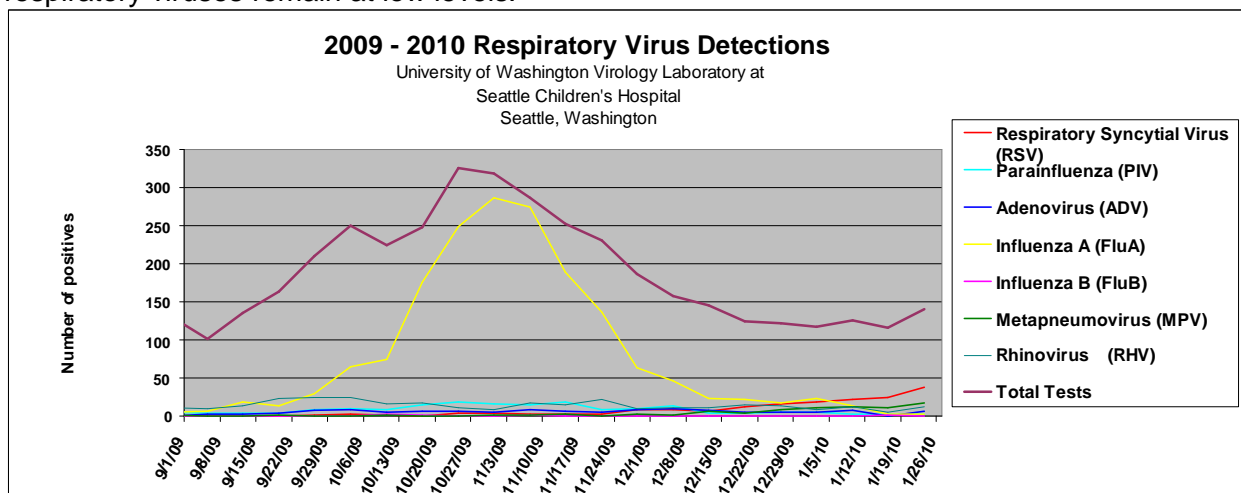
Peace Health Laboratory Influenza and RSV testing

		Week	52	1	2	3	4
		End date	01/02/10	01/09/10	01/16/10	01/23/10	01/30/10
Influenza tests	Total		22	35	32	20	11
	% Positive A		13.6%	0	0	5%	0
	% Positive B		0	0	0	0	0
RSV tests	Total		8	6	16	21	15
	% Positive		25.0%	33.0%	0	9.5%	13.3%

Peace Health Laboratory Influenza testing



The University of Washington Virology Laboratory Respiratory Virus Detection report shows a continued low level of Influenza A positive tests and a continued rise of positive RSV. Other respiratory viruses remain at low levels.



<http://depts.washington.edu/rspvirus/documents/VD2009-10.pdf>

Last Updated on: 01/23/2310

School Absenteeism

School absenteeism is an indirect measure of influenza activity. Absenteeism increases during influenza season and during outbreaks, but may be due to causes other than influenza. Bellingham School District reports daily absenteeism for all schools in the district to the health department. Eight other private and public sentinel schools within the county report absenteeism twice a week. All schools in the county are required to report to the health department when absenteeism exceeds 10%.

Bellingham School District Daily and Weekly Absenteeism

	Day	01/25/10	01/26/10	01/27/10	01/28/10	01/29/10	
% Absent		6.26%	5.69%	5.02%	4.43%	5.22%	
	Week	51	52	1	2	3	4
End date		12/26/09	01/02/10	01/08/10	01/15/10	01/22/10	01/29/10
Average % Absent		WINTER	BREAK	5.9%	6.5%	5.9%	5.3%

Sentinel School Semiweekly Absenteeism (n=8)

	Day	01/12/10	01/14/10	01/19/10	01/21/10	01/26/10	01/28/10
% Absent		5.8%	4.5%	5.5%	5.9%	4.9%	4.0%

Number of Whatcom County Schools Reporting Elevated Absenteeism

	Day	01/25/10	01/26/10	01/27/10	01/28/10	01/29/10
>10% absent		0	0	0	0	1
>20% absent		0	0	0	0	0
>30% absent		0	0	0	0	0

Nursing Homes No Nursing Homes reported influenza activity in residents.

Links for other influenza weekly status reports

WA State Department of Health Weekly Influenza Updates

www.doh.wa.gov/EHSPHL/Epidemiology/CD/fluupdate.pdf

BC Centre for Disease Control

www.bccdc.ca/dis-cond/DiseaseStatsReports/influSurveillanceReports.htm

Centers for Disease Control (CDC) Weekly Flu View

www.cdc.gov/flu/weekly

Centers for Disease Control 2009 H1N1 Flu: International Situation Update

<http://www.cdc.gov/h1n1flu/updates/international>

World Health Organization Pandemic (H1N1) 2009 Situation Updates

www.who.int/csr/disease/swineflu/updates/en/index.html

University of Washington Respiratory Virus Detection Report

depts.washington.edu/rspvirus/documents/VD2009-10.pdf