

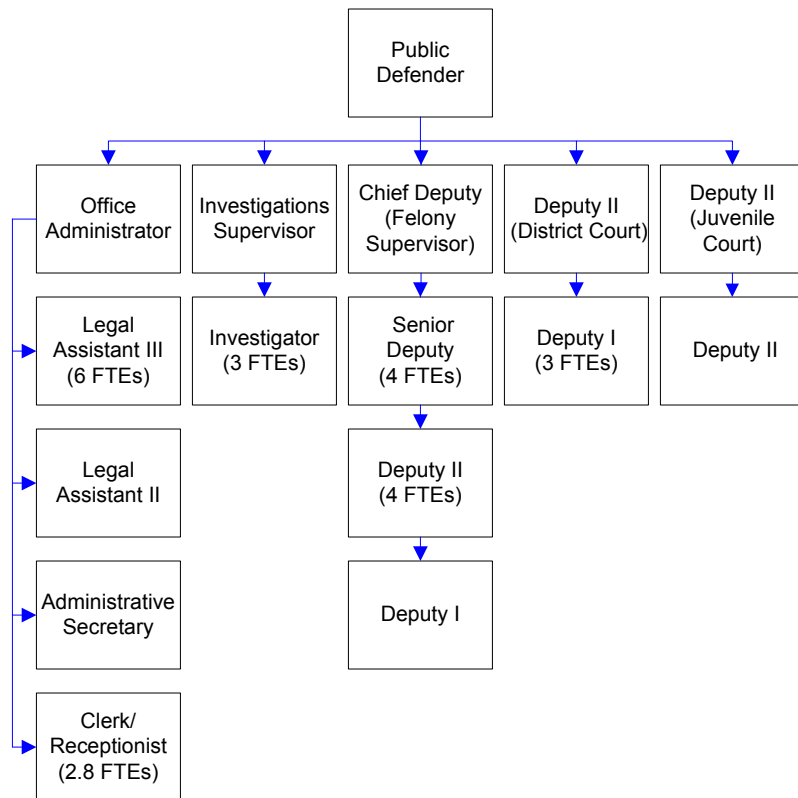
Public Defender's Office

The Public Defender's Office provides constitutionally mandated indigent legal defense for felony, misdemeanor and probation violation charges against adults and juveniles in Whatcom County Superior and District Courts, and involuntary mental and alcohol commitments.

FTEs for this department

Year	2007	2008	2009	*2010	*2011	*2012	*Budget
FTEs	36.80	37.80	34.80	34.80	32.80	29.80	

The chart below shows the organizational structure for 2011 only.



Mission & Objectives

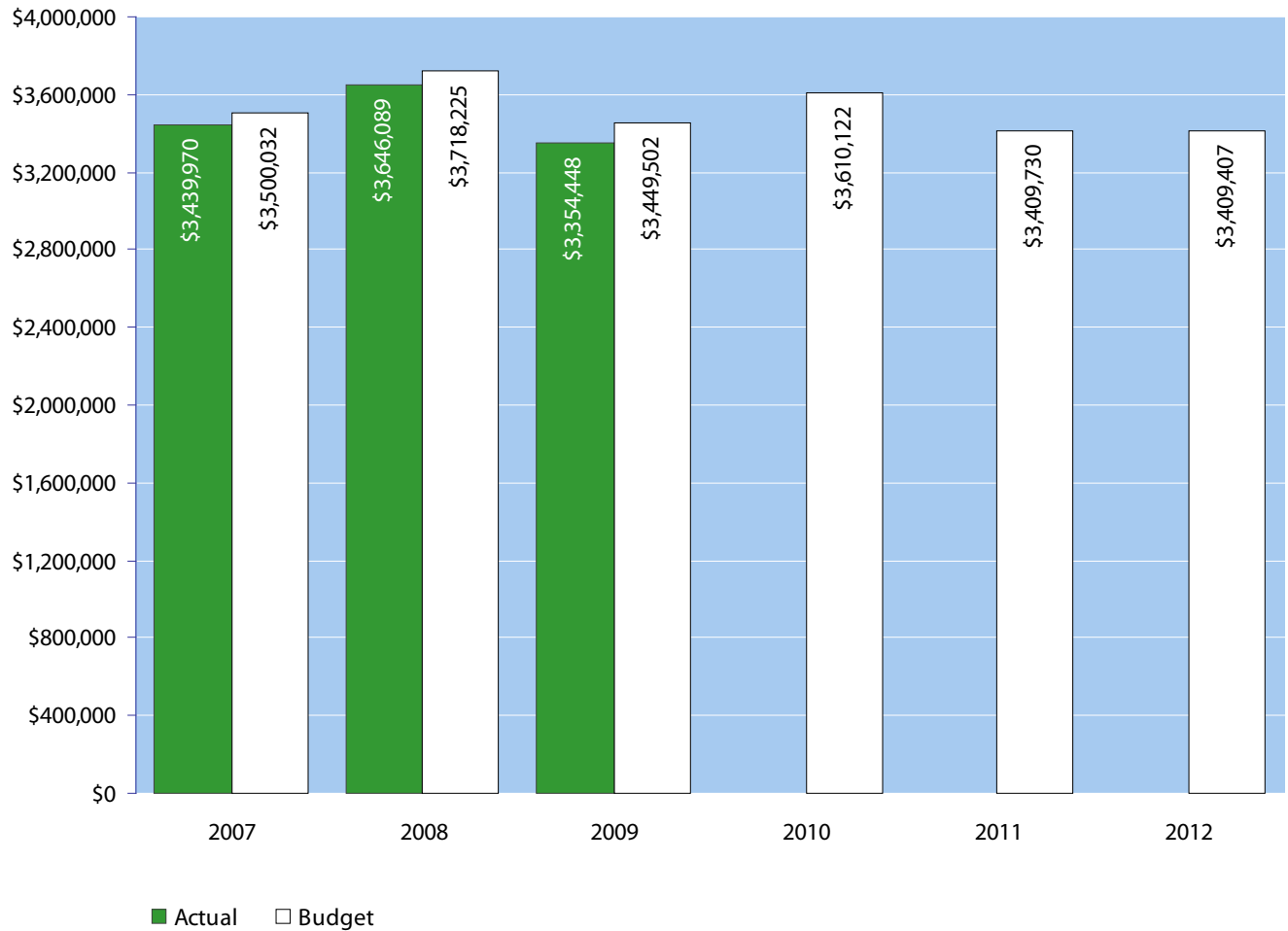
Mission

Provide high quality legal representation as efficiently and economically as possible, while maintaining the confidence of clients that they are receiving competent and skilled representation.

Objectives

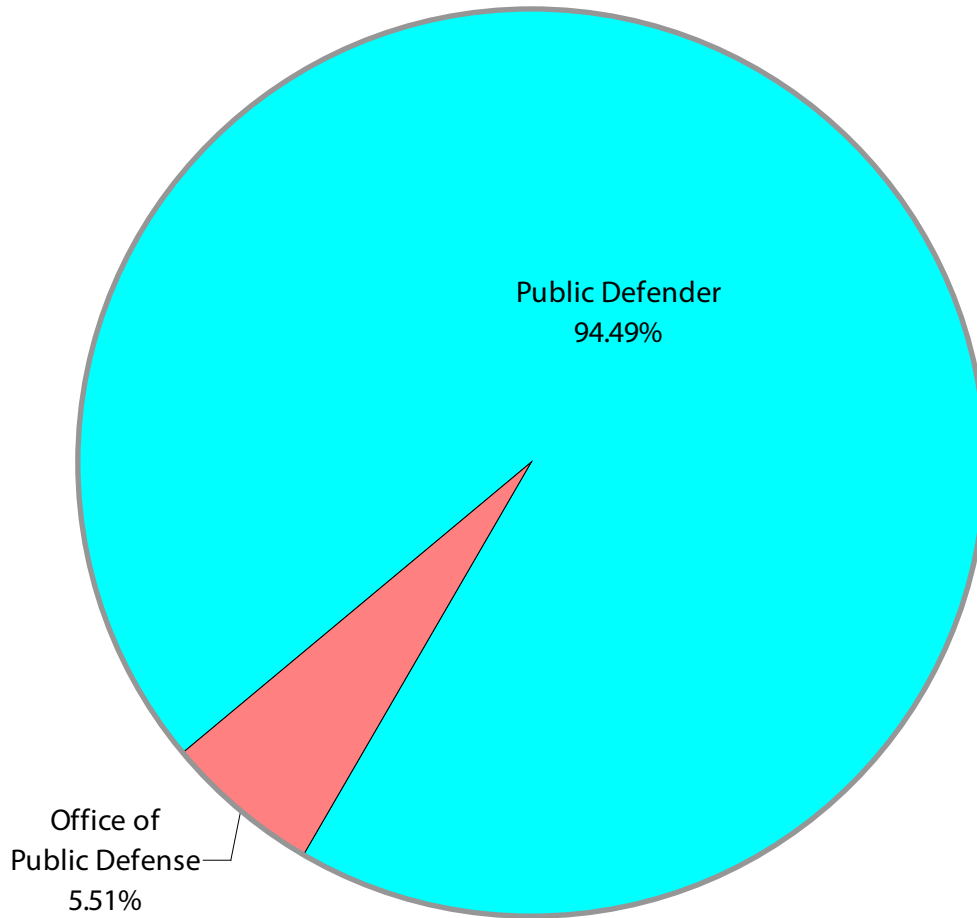
- Provide competent representation to each of our clients.
- Work towards bringing our caseloads closer to national and state standards.
- Work with other branches of the criminal justice system, the Department of Social and Health Services, and the Attorney General's Office to continue the implementation and expansion of drug courts and family treatment courts in Whatcom County.
- Continue development of a Policy and Procedures Manual for the Whatcom County Public Defender's Office.

Expenditure Trends



NOTE: Capital expenditures and interfund operating transfers are not shown to more accurately reflect ongoing operational costs.

2011-2012 Budget by Program



NOTE: Capital expenditures are not shown to more accurately reflect ongoing operational costs.

Program Summary

	Actual 2007	Actual 2008	Actual 2009	Budget 2010	Budget 2011	Budget 2012
OPERATIONS						
General Fund						
2650 Public Defender	3,192,968	3,331,941	3,030,023	3,238,548	3,224,530	3,218,916
2668 Public Defender- Rapid Border	170,435	168,837	151,871	199,270	-	-
2667 PD - Office of Public Defense	76,567	145,311	172,554	172,304	185,200	190,491
<i>Total Public Defender Operations</i>	3,439,970	3,646,089	3,354,448	3,610,122	3,409,730	3,409,407
TOTAL PUBLIC DEFENDER	3,439,970	3,646,089	3,354,448	3,610,122	3,409,730	3,409,407
Percent Change from Previous Year	7.9%	6.0%	-8.0%	7.6%	-5.6%	-0.0%

2011-2012 Funding Sources

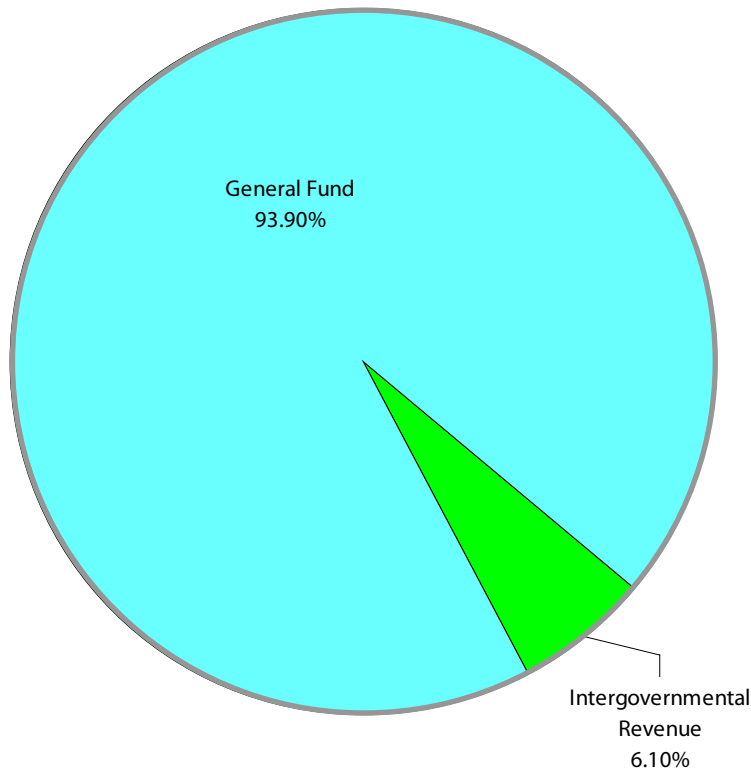
	2011	2012
Intergovernmental Revenue	207,955	207,955
General Fund	3,201,775	3,201,452
Total Funding	3,409,730	3,409,407

Intergovernmental Revenue

Revenue received from the State of Washington, from Becca Bill appropriations and Office of Public Defender funding in accordance with RCW 10.101.

General Fund

Undedicated General Fund resources.



Expenditures Summary

	Actual 2007	Actual 2008	Actual 2009	Budget 2010	Budget 2011	Budget 2012
GENERAL FUND						
2650 Public Defender						
Salaries & Wages	1,949,476	2,032,378	1,806,930	1,896,879	1,931,578	1,884,348
Benefits	639,419	682,254	638,087	738,495	745,850	787,686
Supplies	55,989	44,320	45,624	51,185	46,458	45,518
Other Services & Charges	548,084	572,989	539,382	551,989	500,644	501,364
<i>Total Public Defender</i>	3,192,968	3,331,941	3,030,023	3,238,548	3,224,530	3,218,916
<i>Percent Change from Previous Year</i>	13.6%	4.4%	-9.1%	6.9%	-0.4%	-0.2%
2667 PD-Office of Public Defense Grant						
Salaries & Wages	52,137	98,942	124,355	118,370	127,524	127,524
Benefits	17,942	37,869	43,329	46,202	49,944	55,235
Supplies	3,157	6,440	3,175	2,400	2,400	2,400
Other Services & Charges	3,331	2,060	1,695	5,332	5,332	5,332
<i>Total PD-Office of Public Def. Grant</i>	76,567	145,311	172,554	172,304	185,200	190,491
<i>Percent Change from Previous Year</i>	0.0%	89.8%	18.7%	-0.1%	7.5%	2.9%
2665-2668 PD- Rapid Border Prosecution						
Salaries & Wages	130,039	128,931	115,908	151,013	-	-
Benefits	40,396	39,906	35,963	48,257	-	-
<i>Total Rapid Border Prosecution</i>	170,435	168,837	151,871	199,270	-	-
<i>Percent Change from Previous Year</i>	16.9%	-0.9%	-10.0%	31.2%	-100.0%	0.0%
TOTAL PUBLIC DEFENDER	3,439,970	3,646,089	3,354,448	3,610,122	3,409,730	3,409,407
<i>Percent Change from Previous Year</i>	7.9%	6.0%	-8.0%	7.6%	-5.6%	-0.0%

Services

Public Defender

Provides criminal defense for indigents in Whatcom County and for individuals undergoing involuntary commitment proceedings.