

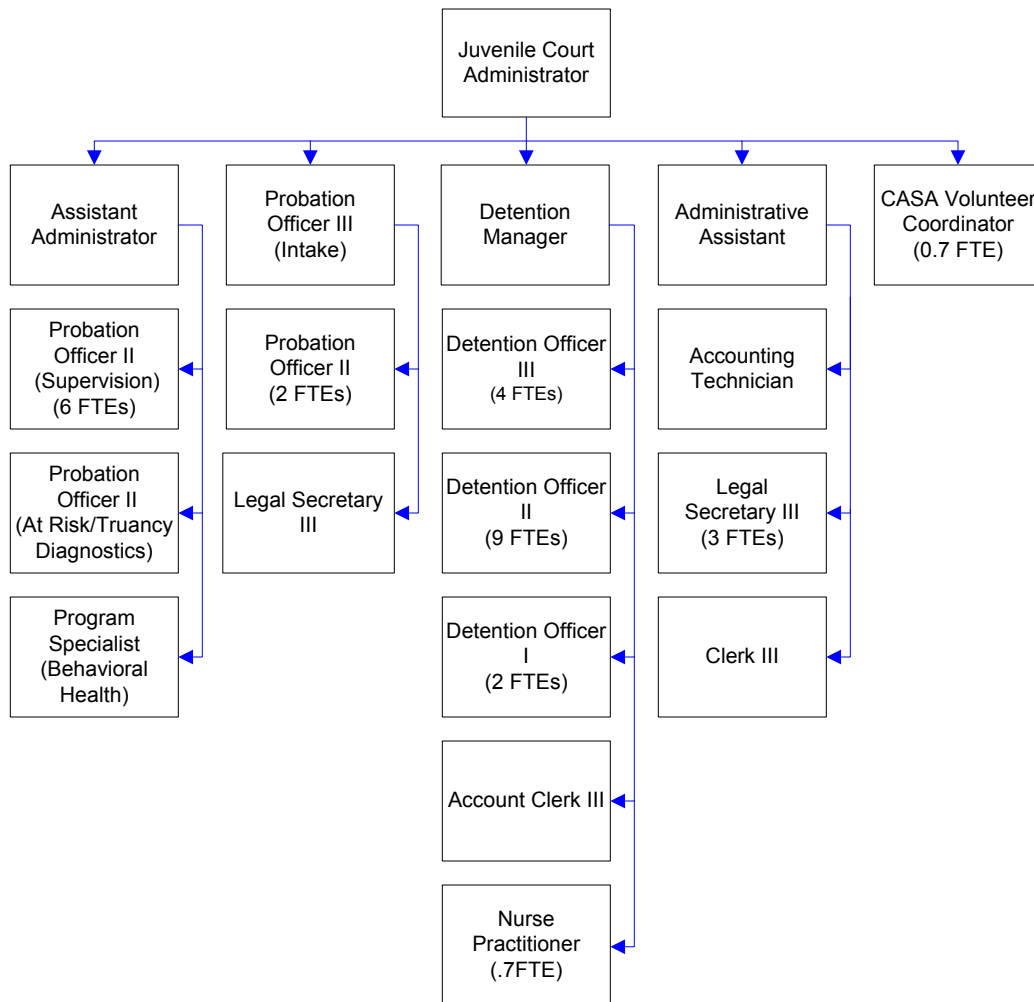
Juvenile Court Administration

Through the Juvenile Court, Detention Center and a number of special programs, this department provides services to assist young offenders with personal and/or environmental problems which get them into trouble with the law. The Juvenile Detention Facility is located on the 6th floor of the courthouse. (Visiting hours are limited. Call for schedule.)

FTEs for this department

Year	2007	2008	2009	*2010	*2011	*2012	*Budget
FTEs	45.80	46.80	46.80	46.80	38.40	38.40	

The chart below shows the organizational structure for 2011 only.



Mission & Objectives

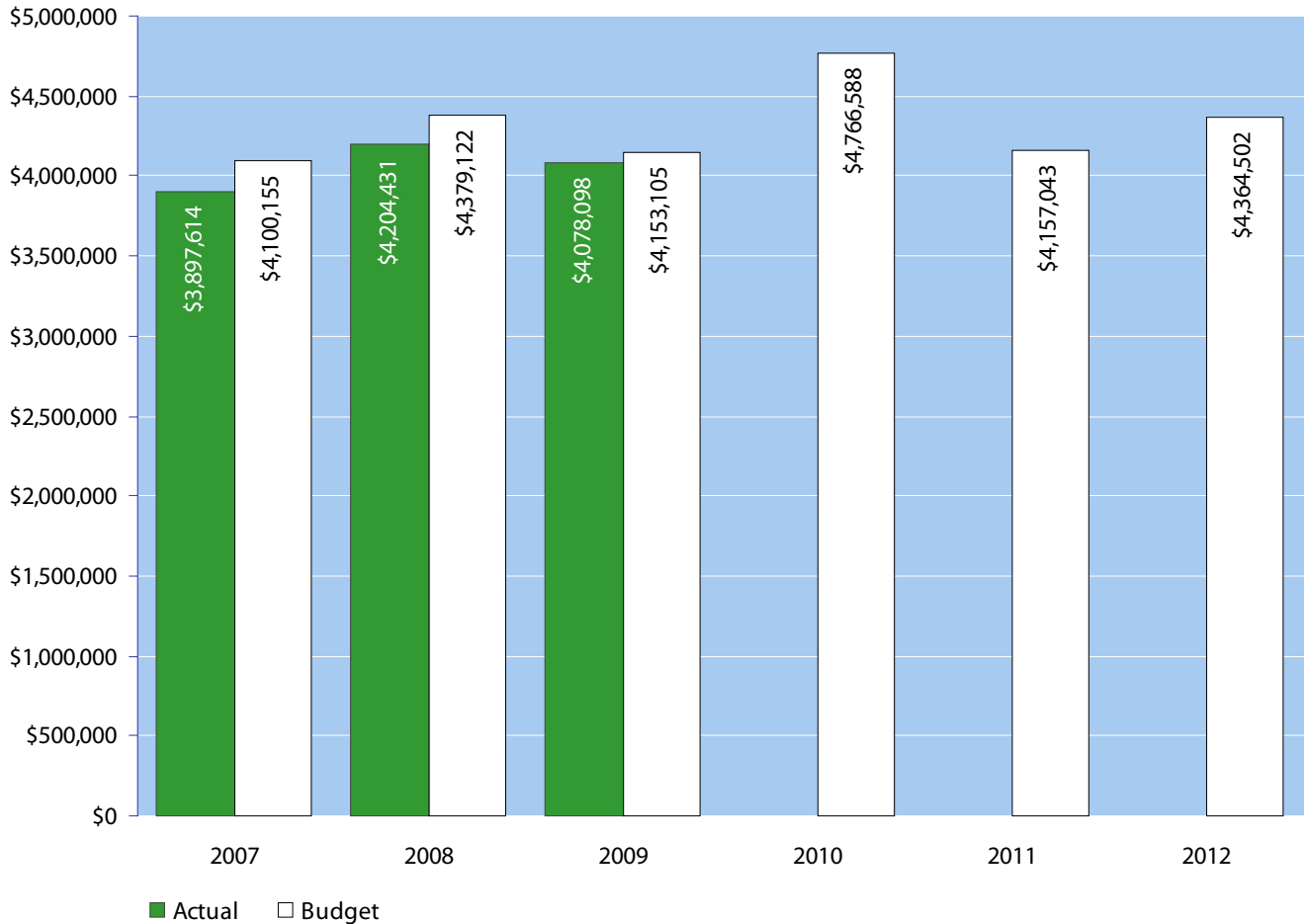
Mission

Whatcom County Juvenile Court Administration is a catalyst for developing safe communities and healthy youth and families by holding youth accountable for their actions, improving their competencies, and repairing the harm done to crime victims.

Objectives

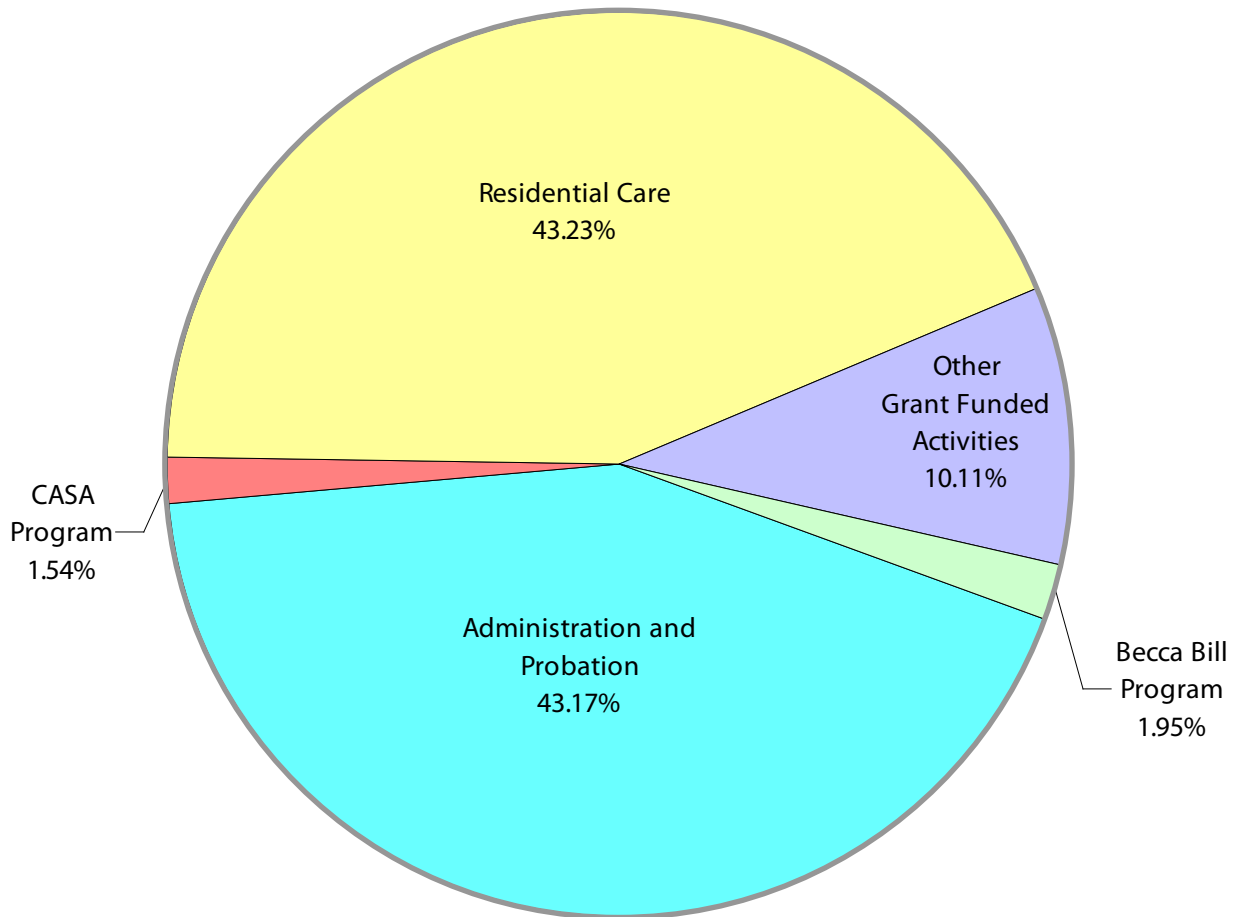
- Consistent with the intent of the legislature under Chapter 13 of the Revised Code of Washington, Whatcom County Juvenile Court will provide a system capable of having primary responsibility for, being accountable for, and responding to the needs of youthful offenders and their victims. It is the further intent of the legislature that youth, in turn, be held accountable for their offenses and that communities, families, and the juvenile courts carry out their functions consistent with this intent. Further, we recognize the legislature declares the following to be equally important:
 - a. Protect the citizenry from criminal behavior;
 - b. Provide for determining whether accused juveniles have committed offenses as defined by this chapter;
 - c. Make the juvenile offender accountable for his or her criminal behavior;
 - d. Provide for punishment commensurate with the age, crime, and criminal history of the juvenile offender;
 - e. Provide due process for juveniles alleged to have committed an offense;
 - f. Provide necessary treatment, supervision, and custody for juvenile offenders;
 - g. Provide for the handling of juvenile offenders by communities whenever consistent with public safety;
 - h. Provide for restitution to victims of crime;
 - i. Develop effective standards and goals for the operation, funding, and evaluation of all components of the juvenile justice system and related services at the state and local levels;
 - j. Provide for a clear policy to determine what types of offenders shall receive punishment, treatment, or both, and to determine the jurisdictional limitations of the courts, institutions, and community services;
 - k. Provide opportunities for victim participation in juvenile justice process, including court hearings on juvenile offender matters, and ensure that Article I, section 35 of the Washington state Constitution, the victim bill of rights, is fully observed;
 - l. Encourage the parents, guardian, or custodian of the juvenile to actively participate in the juvenile justice process.
- Maintain active pool of Volunteer Guardian Ad Litem (CASA) to represent the best interests of children in the dependency process.
- Provide detention services consistent with the intent of RCW 13.16.030.
- Provide services relating to At-Risk Youth, Child in Need of Services, and Truancy consistent with RCW 13.32A, RCW 26A.225.030, and RCW 26A.225.035.

Expenditure Trends



NOTE: Capital expenditures and interfund operating transfers are not shown to more accurately reflect ongoing operational costs.

2011-2012 Budget by Program



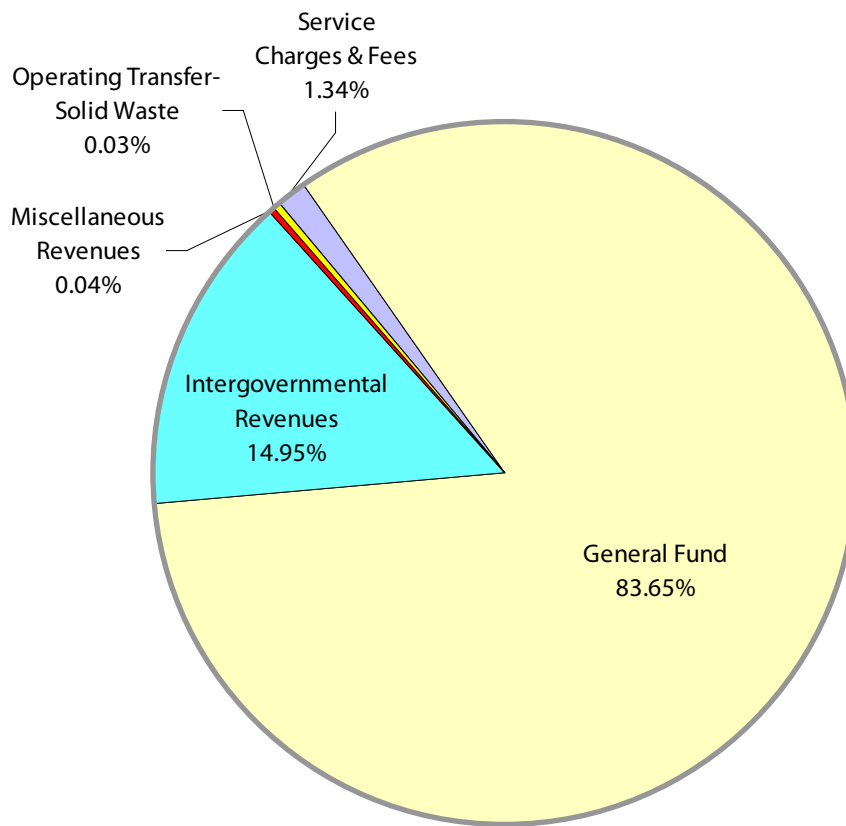
NOTE: Capital expenditures, and interfund operating and residual equity transfers are not shown to more accurately reflect ongoing operational costs.

Program Summary

	Actual 2007	Actual 2008	Actual 2009	Budget 2010	Budget 2011	Budget 2012
OPERATIONS						
General Fund						
1900 Juvenile Court-Admin	1,700,766	1,762,471	1,734,387	2,036,650	1,799,413	1,879,607
1935 Juvenile Ct - CASA Program	-	51,509	58,513	72,772	65,819	65,627
1945 Comm Justice Center	344,994	378,600	257,357	413,567	69,928	74,124
1950 Juvenile Court-CJS	213,744	249,857	224,865	301,972	205,759	211,424
1952 Juvenile Court - Home Port	18,000	-	-	-	-	-
1953 Parole Detention	841	-	116	9,849	9,849	9,849
1959 Becca Bill	74,439	67,875	70,972	79,904	79,523	86,388
1961 DSHS	632	715	-	825	825	825
1962 CDDA Grant	27,033	30,765	16,179	31,659	31,930	31,930
1963 CJAA-DSHS Misc	108,060	130,738	123,669	115,804	105,435	109,356
1964 Juvenile Court-Teen Court	18,500	18,500	18,500	18,500	-	-
1965 GJJAC-JDAI	8,503	22,516	55,363	-	-	-
1970 Residential Care	1,382,102	1,489,310	1,518,177	1,685,086	1,788,562	1,895,372
1995 DOE Comm Litter Clean	-	1,575	-	-	-	-
<i>Total Juvenile Court Operations</i>	<i>3,897,614</i>	<i>4,204,431</i>	<i>4,078,098</i>	<i>4,766,588</i>	<i>4,157,043</i>	<i>4,364,502</i>
CAPITAL						
General Fund						
1900 Juvenile Court-Admin	-	6,504	-	-	-	-
<i>Total Juvenile Court Capital</i>	<i>-</i>	<i>6,504</i>	<i>-</i>	<i>-</i>	<i>-</i>	<i>-</i>
TRANSFERS						
General Fund						
1950 Juvenile Court-CJS	4,000	-	-	-	-	-
<i>Total Juvenile Court Transfers</i>	<i>4,000</i>	<i>-</i>	<i>-</i>	<i>-</i>	<i>-</i>	<i>-</i>
TOTAL JUVENILE COURT ADMIN	3,901,614	4,210,935	4,078,098	4,766,588	4,157,043	4,364,502
Percent Change from Previous Year	8.0%	7.9%	-3.2%	16.9%	-12.8%	5.0%

2011-2012 Funding Sources

	2010	2011
Service Charges & Fees	57,000	57,000
General Fund	3,462,253	3,665,804
Intergovernmental Revenues	633,790	640,198
Miscellaneous Revenues	1,500	1,500
Operating Transfer-Solid Waste	2,500	-
Total Funding	4,157,043	4,364,502



2011-2012 Funding Sources continued

Service Charges & Fees

Juvenile Court rents available detention space to other jurisdictions. The department also charges for copy fees and recovers some cost reimbursement from offender's parents.

General Fund

Undedicated General Fund resources.

Intergovernmental Revenues

State grants fund various programs including

intervention activities, parole violator detention, diversion programs, sex offender treatment, substance abuse treatment for juveniles and court appointed special advocate program.

Miscellaneous Revenue

Includes revenue from detainee phone usage.

Operating Transfer - Solid Waste

Payment from Solid Waste for supervisor of detention's Juvenile Litter Crews.

Expenditures Summary

	Actual 2007	Actual 2008	Actual 2009	Budget 2010	Budget 2011	Budget 2012
GENERAL FUND						
1900 Juvenile Court Administration						
Salaries & Wages	1,005,939	1,040,675	1,004,144	1,199,716	1,031,805	1,061,189
Benefits	350,785	365,547	355,723	431,924	392,948	437,581
Supplies	21,873	32,625	20,370	13,650	11,205	11,266
Other Services & Charges	322,169	323,624	354,150	391,360	363,455	369,571
Capital Outlay	-	6,504	-	-	-	-
<i>Total Juvenile Ct Admin.</i>	1,700,766	1,768,975	1,734,387	2,036,650	1,799,413	1,879,607
<i>Percent Change from Previous Year</i>	15.4%	4.0%	-2.0%	17.4%	-11.6%	4.5%
1935 Juvenile Ct - CASA Program						
Salaries & Wages	-	32,910	40,540	51,638	43,267	43,520
Benefits	-	12,238	16,755	21,134	19,399	21,857
Supplies	-	5,568	318	-	153	250
Other Services & Charges	-	793	900	-	3,000	-
<i>Total CASA Program</i>	-	51,509	58,513	72,772	65,819	65,627
<i>Percent Change from Previous Year</i>	0.0%	0.0%	13.6%	24.4%	-9.6%	-0.3%
1945 Juvenile Court - Comm Justice Center						
Salaries & Wages	206,542	225,467	142,564	256,164	48,566	50,294
Benefits	83,988	94,639	62,591	113,498	21,362	23,830
Supplies	4,922	4,357	1,354	4,050	-	-
Other Services & Charges	49,542	54,137	50,848	39,855	-	-
<i>Total Juvenile Ct -Comm Justice Ctr</i>	344,994	378,600	257,357	413,567	69,928	74,124
<i>Percent Change from Previous Year</i>	13.4%	9.7%	-32.0%	60.7%	-83.1%	6.0%
1950 Juvenile Court - CJS						
Salaries & Wages	68,485	92,168	96,534	116,457	69,372	71,661
Benefits	24,998	36,944	38,426	46,671	24,314	27,252
Supplies	14,169	17,050	1,469	25,189	25,189	25,189
Other Services & Charges	106,092	103,695	88,436	113,655	86,884	87,322
Residual Equity Transfers	4,000	-	-	-	-	-
<i>Total Juvenile Ct - CJS</i>	217,744	249,857	224,865	301,972	205,759	211,424
<i>Percent Change from Previous Year</i>	-18.3%	14.7%	-10.0%	34.3%	-31.9%	2.8%
1952 Juvenile Court - Home Port						
Other Services & Charges	18,000	-	-	-	-	-
<i>Total Juvenile Ct - Home Port</i>	18,000	-	-	-	-	-
<i>Percent Change from Previous Year</i>	0.0%	-100.0%	0.0%	0.0%	0.0%	0.0%

continued on next page

Expenditures Summary continued

	Actual 2007	Actual 2008	Actual 2009	Budget 2010	Budget 2011	Budget 2012
1953 Juvenile Court - Parole Detention						
Benefits	829	-	-	-	-	-
Supplies	-	-	116	1,000	1,000	1,000
Other Services & Charges	12	-	-	8,849	8,849	8,849
<i>Total Juvenile Ct - Parole Det.</i>	841	-	116	9,849	9,849	9,849
<i>Percent Change from Previous Year</i>	-98.0%	-100.0%	0.0%	8390.5%	0.0%	0.0%
1959 Juvenile Court - Becca Bill						
Salaries & Wages	55,372	47,583	50,374	54,592	55,713	59,576
Benefits	18,185	18,273	18,976	23,787	22,285	25,262
Supplies	-	269	134	500	500	500
Other Services & Charges	882	1,750	1,488	1,025	1,025	1,050
<i>Total Juvenile Ct - Becca Bill</i>	74,439	67,875	70,972	79,904	79,523	86,388
<i>Percent Change from Previous Year</i>	-1.0%	-8.8%	4.6%	12.6%	-0.5%	8.6%
1961 Juvenile Court - DSHS						
Supplies	632	715	-	600	600	600
Other Services & Charges	-	-	-	225	225	225
<i>Total Juvenile Ct - DSHS</i>	632	715	-	825	825	825
<i>Percent Change from Previous Year</i>	-30.1%	13.1%	-100.0%	0.0%	0.0%	0.0%
1962 Juvenile Court - CDDA Grant						
Supplies	4,163	4,806	2,926	6,200	6,200	6,200
Other Services & Charges	22,870	25,959	13,253	25,459	25,730	25,730
<i>Total Juvenile Ct - CDDA Grant</i>	27,033	30,765	16,179	31,659	31,930	31,930
<i>Percent Change from Previous Year</i>	2.1%	13.8%	-47.4%	95.7%	0.9%	0.0%
1963 Juvenile Court - CJAA-DSHS Misc						
Salaries & Wages	60,905	77,111	75,757	68,424	67,372	69,398
Benefits	16,111	22,968	23,260	24,007	24,063	26,956
Supplies	5,607	5,806	2,448	1,002	2,000	1,002
Other Services & Charges	25,437	24,853	22,204	22,371	12,000	12,000
<i>Total Juvenile Ct-CJAA-DSHS</i>	108,060	130,738	123,669	115,804	105,435	109,356
<i>Percent Change from Previous Year</i>	43.7%	21.0%	-5.4%	-6.4%	-9.0%	3.7%
1964 Juvenile Court - Teen Court						
Other Services & Charges	18,500	18,500	18,500	18,500	-	-
<i>Total Juvenile Ct - Teen Court</i>	18,500	18,500	18,500	18,500	-	-
<i>Percent Change from Previous Year</i>	0.0%	0.0%	0.0%	0.0%	-100.0%	0.0%
1965 Juvenile Court - GJJAC - JDAI						
Supplies	64	171	-	-	-	-
Other Services & Charges	8,439	22,345	55,363	-	-	-
<i>Total Juvenile Ct - GJJAC-JDAI</i>	8,503	22,516	55,363	-	-	-
<i>Percent Change from Previous Year</i>	-62.8%	164.8%	145.9%	-100.0%	0.0%	0.0%

continued on next page

Expenditures Summary continued

	Actual 2007	Actual 2008	Actual 2009	Budget 2010	Budget 2011	Budget 2012
1970 Juvenile Court - Res. Care						
Salaries & Wages	786,660	835,595	861,327	933,271	1,031,824	1,083,127
Benefits	301,577	350,918	357,266	432,744	448,358	497,941
Supplies	84,544	89,351	81,862	89,200	78,800	83,700
Other Services & Charges	209,321	213,446	217,722	229,871	229,580	230,604
<i>Total Juvenile Ct - Res. Care</i>	1,382,102	1,489,310	1,518,177	1,685,086	1,788,562	1,895,372
<i>Percent Change from Previous Year</i>	5.7%	7.8%	1.9%	11.0%	6.1%	6.0%
1995 Juvenile - DOE Comm Litter Clean						
Salary & Wages	-	1,432	-	-	-	-
Benefits	-	143	-	-	-	-
<i>Total Juvenile Ct - DOE</i>	-	1,575	-	-	-	-
<i>Percent Change from Previous Year</i>	-100.0%	0.0%	-100.0%	0.0%	0.0%	0.0%
TOTAL JUVENILE COURT	3,901,614	4,210,935	4,078,098	4,766,588	4,157,043	4,364,502
<i>Percent Change from Previous Year</i>	8.0%	7.9%	-3.2%	16.9%	-12.8%	5.0%

Services

Administration

Juvenile Court Administration Intake and Probation Services

Provides Court related information requested by the judge, prosecutor, and public defender; keeps offenders informed of all hearings; administers risk assessment; provides pre-trial monitoring, provides post adjudication supervision and monitoring.

Court Appointed Special Advocate Program

Coordinates Volunteer CASA program.

Community Justice Accountability Act (CJAA), FFT, and Coordination of Services

Provides Aggression Replacement Training (ART), Family Functional Therapy (FFT) and coordination of services to youth and their families.

Detention

Parole Detention/Diagnostics

Custody & care of youth held in detention who are under JRA parole supervision or pending transportation to the institutions. Pre/post diagnostic report writing on youth committed to JRA.

Juvenile Detention

Juvenile Detention is a safe and secure environment for youth who have been arrested pending a court appearance or who have been sentenced to serve time after a court appearance.

Probation

Consolidated Juvenile Services - Diversion

Eligible minor & first offenders are referred to the Diversion Unit, where they may choose to enter a diversion agreement in lieu of going to court and being placed on probation.

Consolidated Juvenile Services - SSODA

All first-time adjudicated felony sex offenders are evaluated for risk to the community and suitability for community based treatment.

Becca Bill Program

The Becca Bill programs fall into 3 categories: At-Risk Youth; Children in Need of Services (CHINS); and Truancy. Court intervention, case planning, and monitoring services are provided.

Services continued

Victim Restoration Program

The Victim Restoration Program provides advocacy services to victims of juvenile crime including court process information, victim impact statements, restitution claim processing, restitution collection and general support.

Chemical Dependency Disposition Alternative (CDDA)

E3SHB 3900 allows for the evaluation of chemically abusing youth to be considered for a disposition alternative that allows judges to order treatment instead of confinement.