

# Public Defender's Office

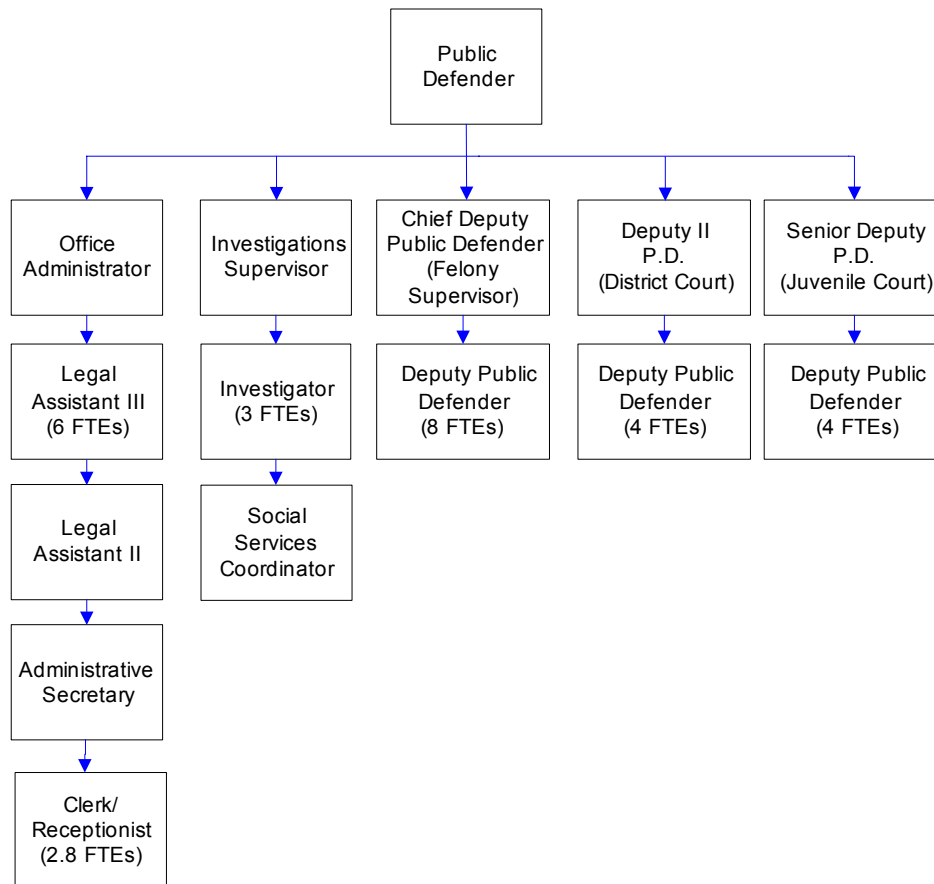
The Public Defender's Office provides constitutionally mandated indigent legal defense for felony, misdemeanor, and probation violation charges against adults and juveniles in Whatcom County Superior and District Courts, parents in juvenile dependency matters, involuntary mental and alcohol commitments.

## FTE's for this department

Year	2005	2006	2007	*2008	*2009	*2010
FTE	33.50	34.50	36.80	37.80	36.80	36.80

*\*budget*

The chart below shows the organizational structure for 2009 only.



## Mission & Objectives

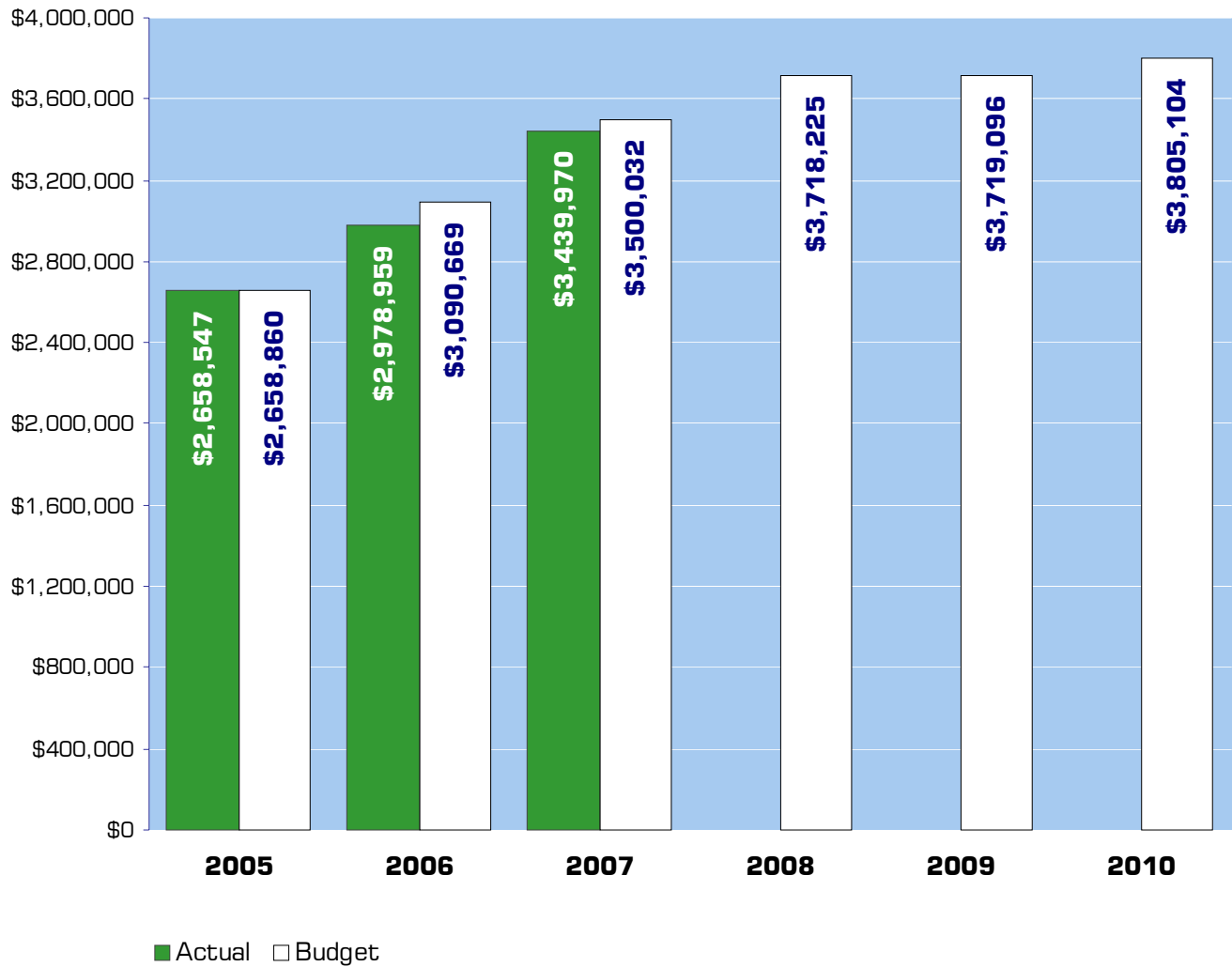
### Mission

Provide high quality legal representation as efficiently and economically as possible, while maintaining the confidence of clients that they are receiving competent and skilled representation.

### Objectives

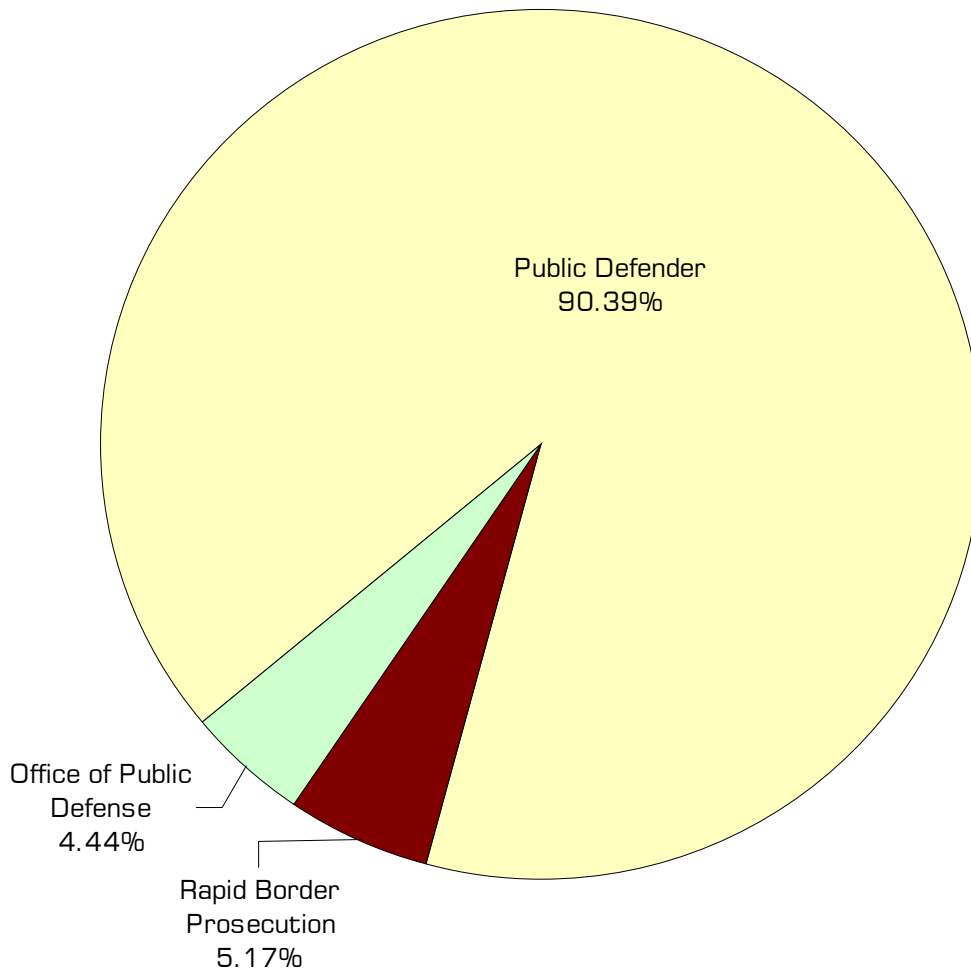
- Provide competent representation to each client.
- Work towards bringing caseloads closer to national and state standards.
- Work with other branches of the criminal justice system, the Department of Social and Health Services, and the Attorney General's Office to continue the implementation and expansion of drug courts and family treatment courts in Whatcom County.
- Continue development of a Policy and Procedures Manual for the Whatcom County Public Defender's Office.

## Expenditure Trends



*NOTE: Capital expenditures and interfund operating transfers are not shown to more accurately reflect ongoing operational costs.*

## 2009-2010 Budget by Program



*NOTE: Capital expenditures are not shown to more accurately reflect ongoing operational costs.*

# Program Summary

Actual 2005	Actual 2006	Actual 2007	Budget 2008	Budget 2009	Budget 2010
----------------	----------------	----------------	----------------	----------------	----------------

**OPERATIONS**

**General Fund**

2650 Public Defender	2,571,971	2,811,045	3,192,968	3,350,742	3,367,582	3,433,530
2668 Public Defender- Rapid Border	86,576	145,811	170,435	207,365	189,462	199,270
2667 PD- Office of Public Defense	-	-	76,567	160,118	162,052	172,304
2675 Public Defender Move	-	22,103	-	-	-	-
<b>Total Public Defender Operations</b>	<b>2,658,547</b>	<b>2,978,959</b>	<b>3,439,970</b>	<b>3,718,225</b>	<b>3,719,096</b>	<b>3,805,104</b>

**CAPITAL**

**General Fund**

2675 Public Defender Move	-	210,026	-	-	-	-
<b>Total Public Defender Capital</b>	<b>-</b>	<b>210,026</b>	<b>-</b>	<b>-</b>	<b>-</b>	<b>-</b>
<b>TOTAL PUBLIC DEFENDER</b>	<b>2,658,547</b>	<b>3,188,985</b>	<b>3,439,970</b>	<b>3,718,225</b>	<b>3,719,096</b>	<b>3,805,104</b>
<b>Percent Change from Previous Year</b>	<b>18.0%</b>	<b>20.0%</b>	<b>7.9%</b>	<b>8.1%</b>	<b>0.0%</b>	<b>2.3%</b>

## 2009-2010 Funding Sources

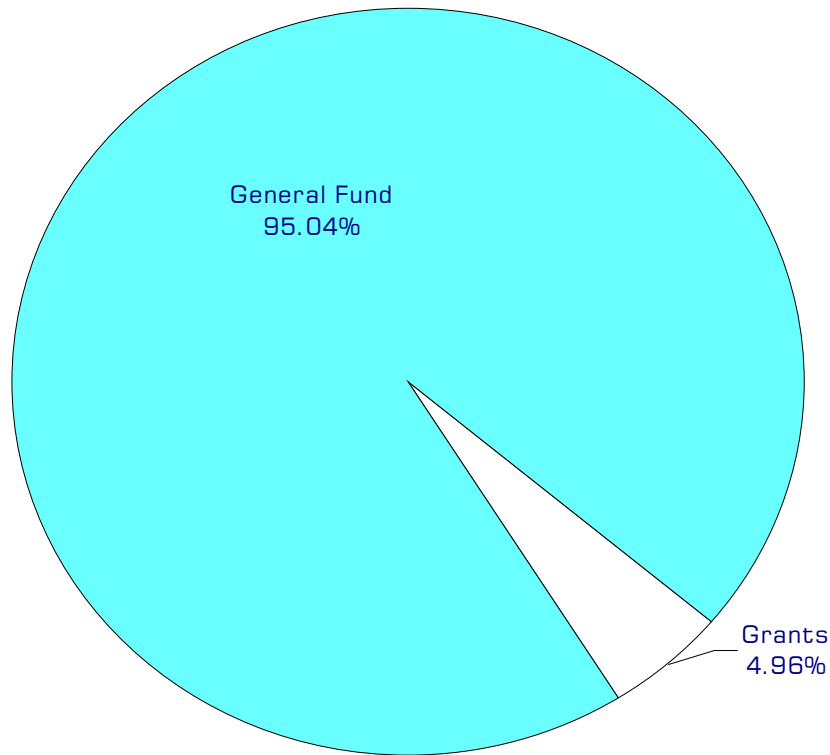
	<b>2009</b>	<b>2010</b>
Grants	181,472	191,724
General Fund	3,537,624	3,613,380
Total Funding	3,719,096	3,805,104

### Grants

Revenue received from the State of Washington.

### General Fund

Undedicated General Fund resources.



## Performance / Activity Measures

	Actual 2005	Actual 2006	Actual 2007	Projected 2008	Projected 2009	Projected 2010
Felonies	1,883	1,738	1,758	1,580	1,492	1,409
Probation Violations (Sup/Dist Cts)	301	321	396	488	574	676
Misdemeanors	1,453	1,959	2,880	3,246	4,269	5,614
Juvenile (Delinquency)	735	650	646	702	694	686
Juvenile (Probation)	580	645	506	300	249	207
Juvenile (Civil)	266	255	318	294	307	320
Civil Commitments	301	317	330	400	441	486
Appeals/Other	19	12	12	10	8	7
<b>Total</b>	<b>5,538</b>	<b>5,897</b>	<b>6,846</b>	<b>7,020</b>	<b>8,034</b>	<b>9,405</b>

## Expenditures Summary

	Actual 2005	Actual 2006	Actual 2007	Budget 2008	Budget 2009	Budget 2010
<b>GENERAL FUND</b>						
2650 Public Defender						
Salaries & Wages	1,711,306	1,805,195	1,949,476	1,999,440	2,005,914	2,064,992
Benefits	471,148	538,037	639,419	725,298	747,677	788,738
Supplies	75,972	40,788	55,989	47,185	50,185	51,185
Other Services & Charges	313,545	427,025	548,084	578,819	563,806	528,615
<i>Total Public Defender</i>	<i>2,571,971</i>	<i>2,811,045</i>	<i>3,192,968</i>	<i>3,350,742</i>	<i>3,367,582</i>	<i>3,433,530</i>
<i>Percent Change from Previous Year</i>	<i>14.2%</i>	<i>9.3%</i>	<i>13.6%</i>	<i>4.9%</i>	<i>0.5%</i>	<i>2.0%</i>
2667 PD-Office of Public Defense Grant						
Salaries & Wages	-	-	52,137	108,888	110,860	118,370
Benefits	-	-	17,942	37,293	43,460	46,202
Supplies	-	-	3,157	8,135	2,400	2,400
Other Services & Charges	-	-	3,331	5,802	5,332	5,332
<i>Total PD-Office of Public Def. Grant</i>	<i>-</i>	<i>-</i>	<i>76,567</i>	<i>160,118</i>	<i>162,052</i>	<i>172,304</i>
<i>Percent Change from Previous Year</i>	<i>0.0%</i>	<i>0.0%</i>	<i>0.0%</i>	<i>109.1%</i>	<i>1.2%</i>	<i>6.3%</i>
2668 Public Defender- Rapid Border Prosecution						
Salaries & Wages	68,651	112,315	130,039	152,220	143,488	151,013
Benefits	17,925	33,496	40,396	55,145	45,974	48,257
<i>Total Rapid Border Prosecution</i>	<i>86,576</i>	<i>145,811</i>	<i>170,435</i>	<i>207,365</i>	<i>189,462</i>	<i>199,270</i>
<i>Percent Change from Previous Year</i>	<i>0.0%</i>	<i>68.4%</i>	<i>16.9%</i>	<i>21.7%</i>	<i>-8.6%</i>	<i>5.2%</i>
2675 Public Defender Move						
Supplies	-	2,772	-	-	-	-
Other Services & Charges	-	19,331	-	-	-	-
Capital Outlay	-	210,026	-	-	-	-
<i>Total Public Defender Move</i>	<i>-</i>	<i>232,129</i>	<i>-</i>	<i>-</i>	<i>-</i>	<i>-</i>
<i>Percent Change from Previous Year</i>	<i>0.0%</i>	<i>0.0%</i>	<i>-100.0%</i>	<i>0.0%</i>	<i>0.0%</i>	<i>0.0%</i>
<b>TOTAL PUBLIC DEFENDER</b>	<b>2,658,547</b>	<b>3,188,985</b>	<b>3,439,970</b>	<b>3,718,225</b>	<b>3,719,096</b>	<b>3,805,104</b>
<i>Percent Change from Previous Year</i>	<i>18.0%</i>	<i>20.0%</i>	<i>7.9%</i>	<i>8.1%</i>	<i>0.0%</i>	<i>2.3%</i>

## Services

### **Public Defender**

Provide criminal defense for indigents in Whatcom County, and representation for parents in dependency cases and for individuals undergoing involuntary mental health and alcohol commitment proceedings.

