

# Juvenile Court Administration

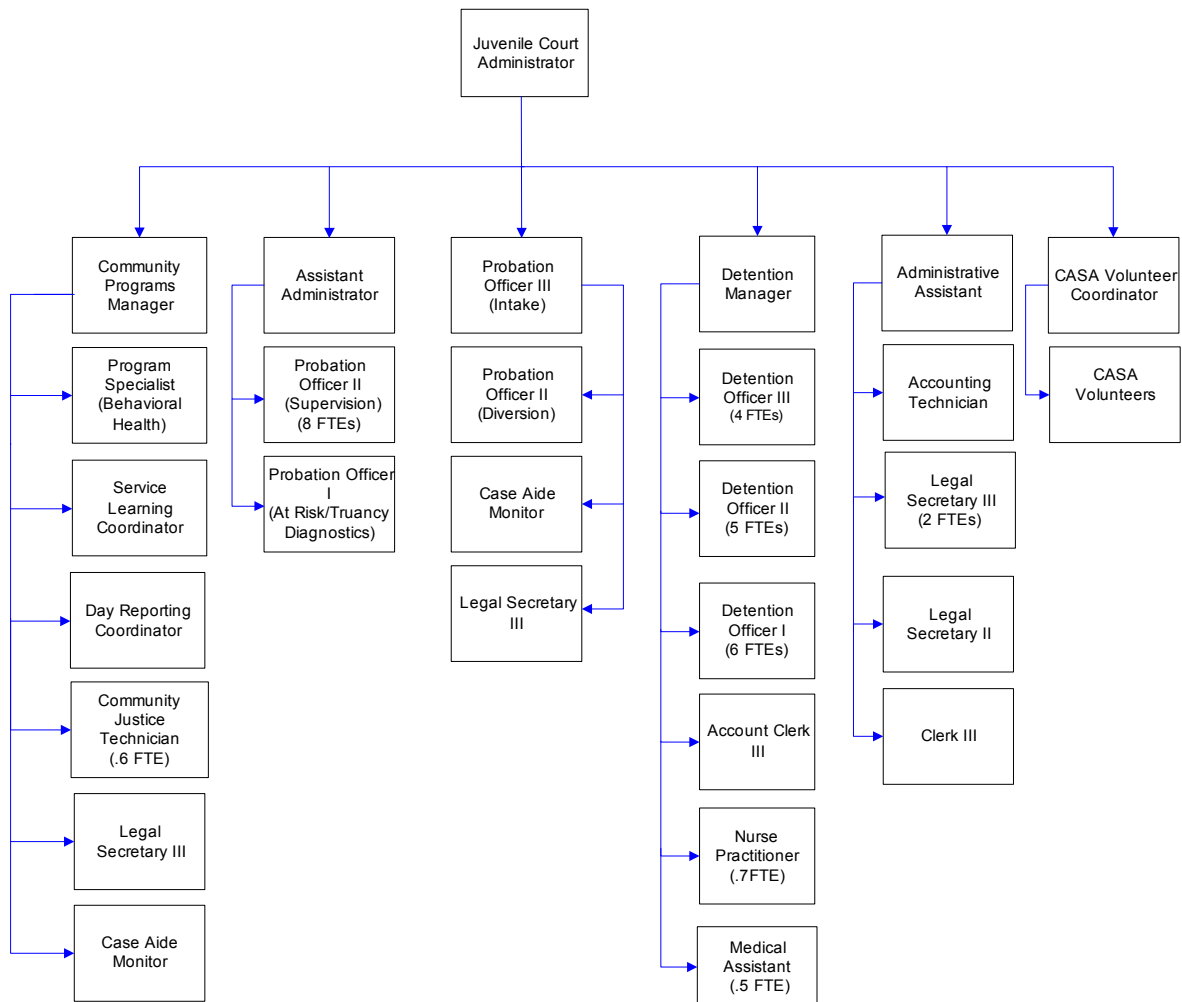
Through the Juvenile Court, Detention Center and a number of special programs, this department provides services to assist young offenders with personal and/or environmental problems which get them into trouble with the law. The Juvenile Detention Facility is located on the 6th floor of the courthouse. (Visiting hours are limited. Call for schedule.)

## FTE's for this department

Year	2005	2006	2007	*2008	*2009	*2010
FTE	45.80	45.80	45.80	46.80	46.80	46.80

*\*budget*

The chart below shows the organizational structure for 2009 only.



## Mission & Objectives

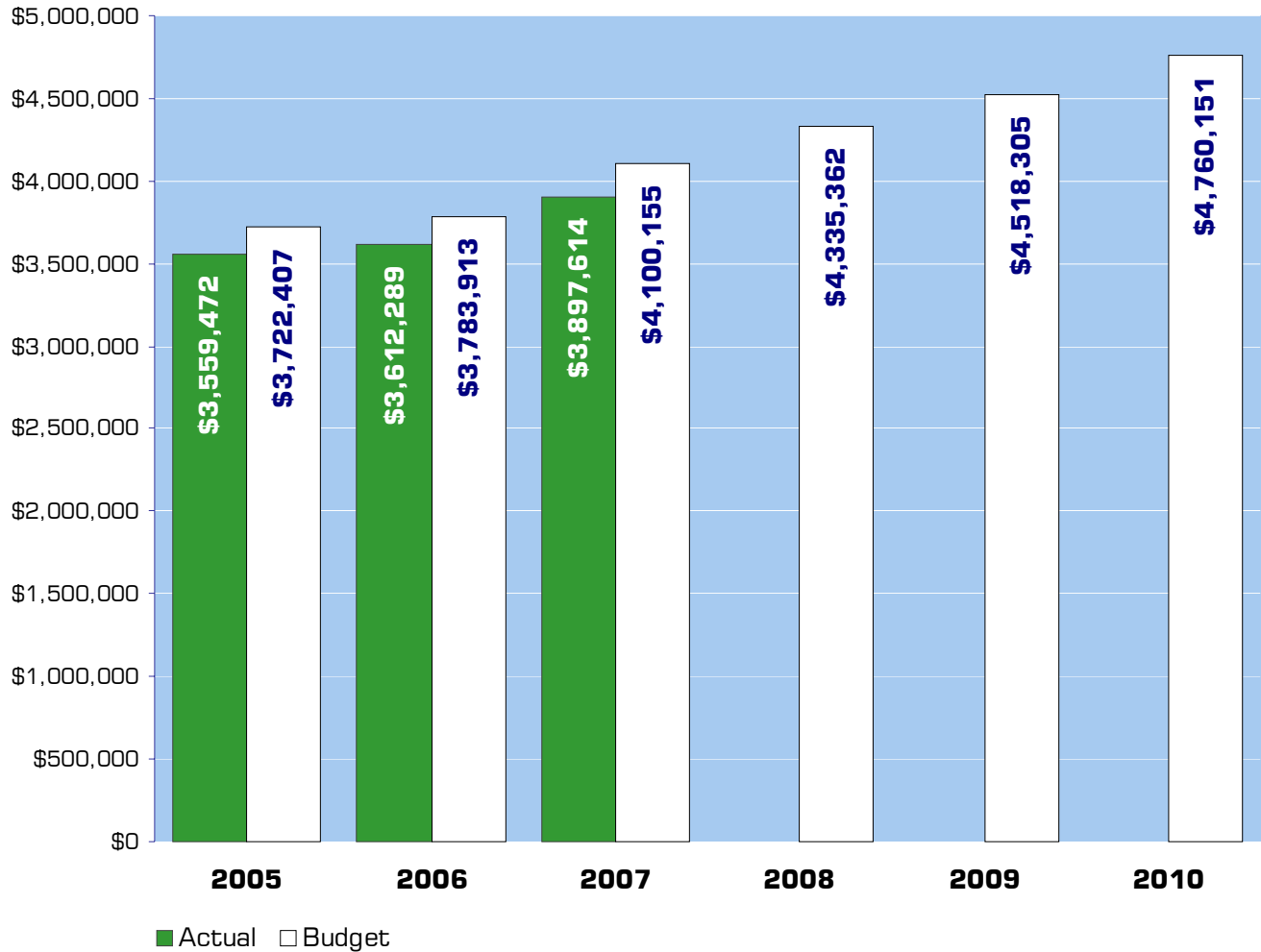
### Mission

Whatcom County Juvenile Court Administration is a catalyst for developing safe communities and healthy youth and families by holding youth accountable for their actions, improving their competencies, and repairing the harm done to crime victims.

### Objectives

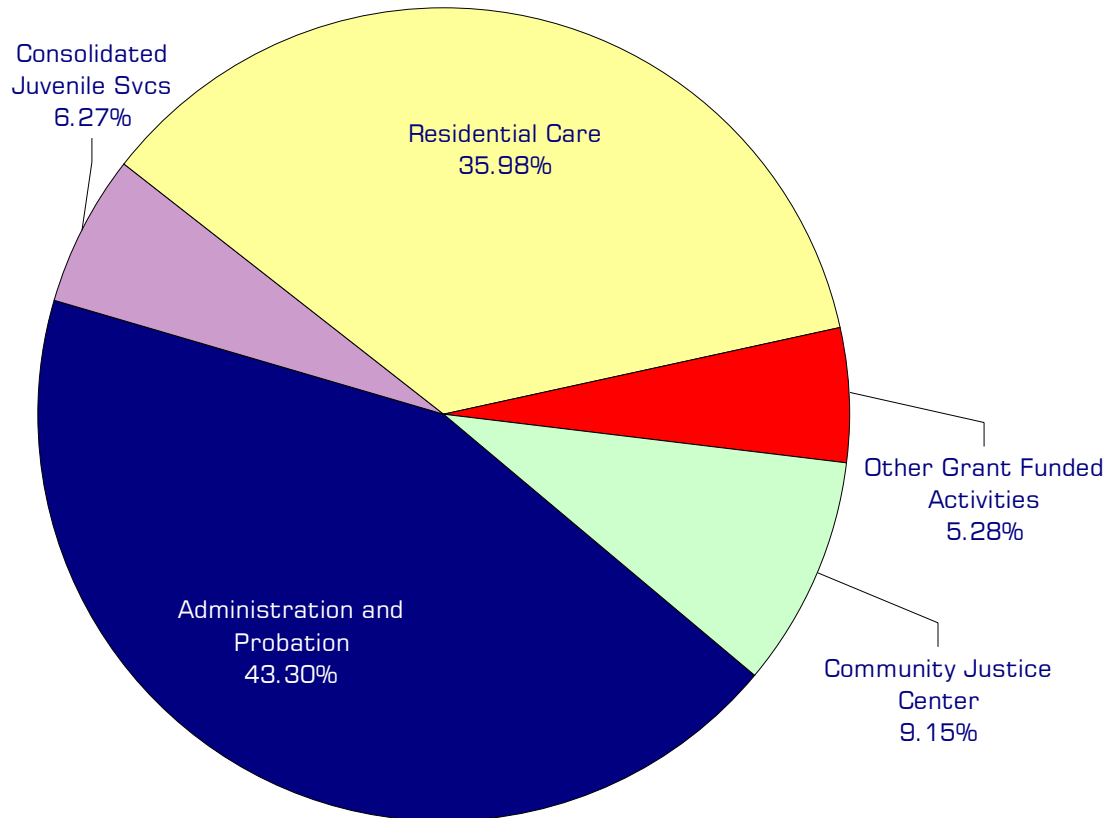
- Increase collection of legal financial obligations and restitution paid to victims from \$59,000 in 2007 to \$65,000 in 2009 and in 2010.
- Maintain the average length of stay in detention at 7 days in 2009 and 2010 by increasing and maintaining utilization of alternative sanctions.
- Maintain the overall number of outstanding warrants issued through Juvenile Court at less than 100 at any given time.
- Maintain work experience program at the Juvenile Community Justice Center and increase Legal Financial Obligation payments to \$13,000 for 2009 and 2010.
- Maintain the number of youth served in the Juvenile Drug Court at 17 in 2009 and 2010.
- Increase the number of youth successfully discharged from community supervision with all requirements completed.
- Recruit, train, and maintain pool of 15 Court Appointed Special Advocate (CASA) Volunteers by 2010.

## Expenditure Trends



*NOTE: Capital expenditures and interfund operating transfers are not shown to more accurately reflect ongoing operational costs.*

## 2009-2010 Budget by Program



*NOTE: Capital expenditures and residual equity transfers are not shown to more accurately reflect ongoing operational costs.*

# Program Summary

	Actual 2005	Actual 2006	Actual 2007	Budget 2008	Budget 2009	Budget 2010
<b>OPERATIONS</b>						
<b>General Fund</b>						
1900 Juvenile Court-Admin	1,419,530	1,474,037	1,700,766	1,761,245	1,928,240	2,028,876
1935 Juvenile Ct - CASA Program	-	-	-	82,287	67,830	72,772
1945 Comm Justice Center	267,645	304,229	344,994	391,771	403,845	432,627
1950 Juvenile Court-CJS	259,959	266,630	213,744	292,005	281,950	291,401
1952 Juvenile Court - Home Port	-	-	18,000	-	-	-
1953 Parole Detention	44,673	41,074	841	9,849	9,849	9,849
1959 Becca Bill	68,426	75,220	74,439	83,360	74,751	79,904
1961 DSHS	1,258	904	632	1,250	825	825
1962 CDDA Grant	45,708	26,467	27,033	31,930	31,659	31,659
1963 CJAA-DSHS Misc	62,934	75,210	108,060	113,841	101,183	105,233
1964 Juvenile Court-Teen Court	18,500	18,500	18,500	18,500	18,500	18,500
1965 GJJAC-JDAI	55,723	22,841	8,503	-	-	-
1970 Residential Care	1,310,823	1,307,040	1,382,102	1,549,324	1,599,673	1,688,505
1995 DOE Comm Litter Clean	4,293	137	-	-	-	-
<i>Total Juvenile Court Operations</i>	<i>3,559,472</i>	<i>3,612,289</i>	<i>3,897,614</i>	<i>4,335,362</i>	<i>4,518,305</i>	<i>4,760,151</i>
<b>CAPITAL</b>						
<b>General Fund</b>						
1970 Residential Care	6,154	-	-	-	-	-
<i>Total Juvenile Court Capital</i>	<i>6,154</i>	<i>-</i>	<i>-</i>	<i>-</i>	<i>-</i>	<i>-</i>
<b>TRANSFERS</b>						
<b>General Fund</b>						
1950 Juvenile Court-CJS	-	-	4,000	-	-	-
1945 Comm Justice Center	1,577	-	-	-	-	-
<i>Total Juvenile Court Transfers</i>	<i>1,577</i>	<i>-</i>	<i>4,000</i>	<i>-</i>	<i>-</i>	<i>-</i>
<b>TOTAL JUVENILE COURT ADMIN</b>	<b>3,567,203</b>	<b>3,612,289</b>	<b>3,901,614</b>	<b>4,335,362</b>	<b>4,518,305</b>	<b>4,760,151</b>
<i>Percent Change from Previous Year</i>	<i>2.9%</i>	<i>1.3%</i>	<i>8.0%</i>	<i>11.1%</i>	<i>4.2%</i>	<i>5.4%</i>

continued on next page

## 2009-2010 Funding Sources

	<b>2009</b>	<b>2010</b>
Service Charges & Fees	87,000	87,000
General Fund	3,673,524	3,897,524
Intergovernmental Revenues	746,281	764,127
Miscellaneous Revenues	1,500	1,500
Operating Transfer-Solid Waste	10,000	10,000
<b>Total Funding</b>	<b>4,518,305</b>	<b>4,760,151</b>

### Service Charges & Fees

Juvenile Court rents available detention space to other jurisdictions. The department also charges for copy fees.

### General Fund

Undedicated General Fund resources.

### Intergovernmental Revenues

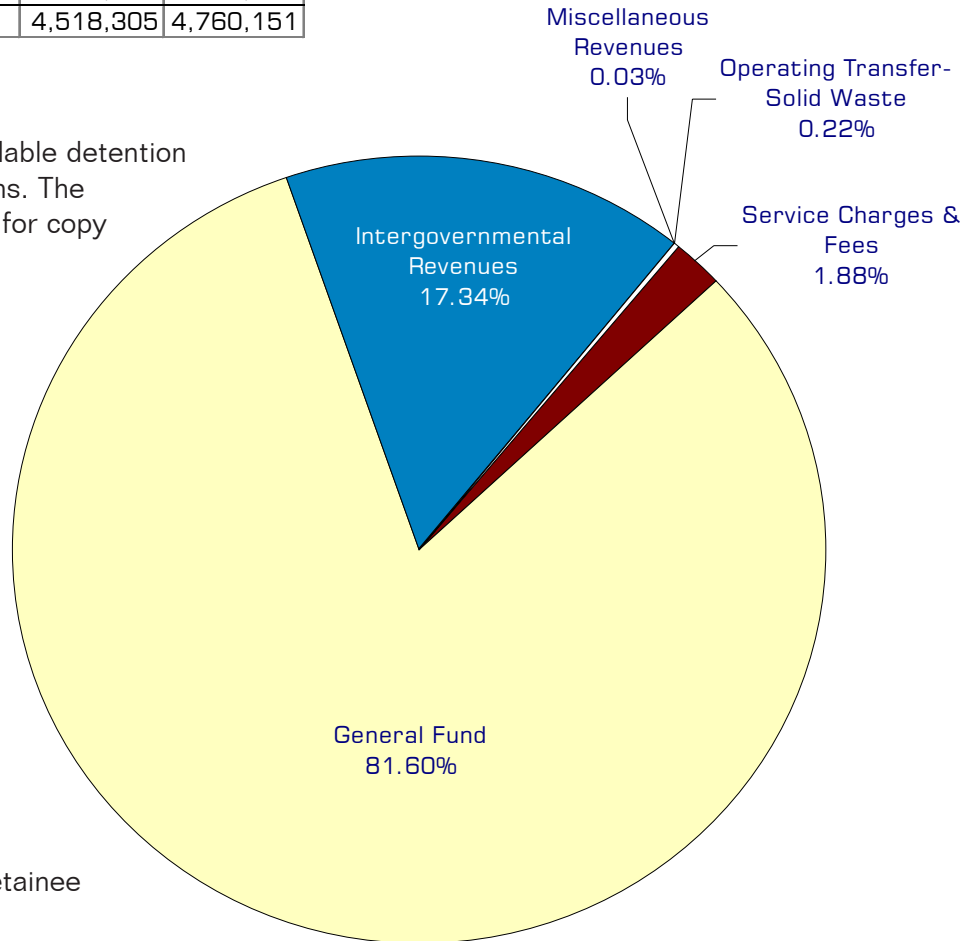
State grants fund various programs including intervention activities, parole violator detention, diversion programs, sex offender treatment, and substance abuse treatment for juveniles.

### Miscellaneous Revenue

Includes revenue from detainee phone usage.

### Operating Transfer - Solid Waste

Payment from Solid Waste for supervisor of detention's Juvenile Litter Crews.



## Performance / Activity Measures

	Actual 2005	Actual 2006	Actual 2007	Projected 2008	Projected 2009	Projected 2010
<i>Detention</i>						
Population (Offenders)	890	820	928	954	950	950
Population (Offenders) Bed Days	7,227	7,200	6,935	7,471	7,500	7,500
Average Length of Stay - Bed Days	8	8	7.29	6.88	7.0	7.0
At-Risk/Truancy/CHINS Contempts	85	190	237	294	300	300
At-Risk/Truancy/CHINS Contempts - Bed Days	195	134	165	168	170	170
Detention Bed Days - Hold for Other Jurisdiction	n/a	591	1,032	1,547	1,600	1,600
<i>Probation</i>						
<i>Community Supervision</i>						
Referred to Diversion	625	625	664	600	600	600
Diversion Agreements Entered	550	550	580	522	530	530
Diversion Agreements Completed	475	475	502	450	460	460
Assigned to Community Supervision	650	617	605	624	630	630
Restitution Collected	\$56,000	\$65,000	\$59,865	\$65,000	\$65,000	\$65,000
<i>Court Services</i>						
Offender Cases Filed	660	567	607	640	650	650
Proceedings Held	3,400	3,400	3,200	3,200	3,200	3,200
At-Risk Youth (ARY) Petitions Filed	65	61	82	70	70	70
Children in Need of Services' Petitions Filed	11	4	14	18	20	20
Truancy Petitions Filed	376	285	371	356	370	370

# Expenditures Summary

	Actual 2005	Actual 2006	Actual 2007	Budget 2008	Budget 2009	Budget 2010
<b>GENERAL FUND</b>						
1900 Juvenile Court Administration						
Salaries & Wages	871,504	892,241	1,005,939	1,025,348	1,140,499	1,199,716
Benefits	239,784	279,120	350,785	385,142	400,859	431,924
Supplies	35,409	21,128	21,873	18,650	13,650	13,650
Other Services & Charges	272,833	281,548	322,169	332,105	373,232	383,586
<i>Total Juvenile Ct Admin.</i>	<i>1,419,530</i>	<i>1,474,037</i>	<i>1,700,766</i>	<i>1,761,245</i>	<i>1,928,240</i>	<i>2,028,876</i>
<i>Percent Change from Previous Year</i>	<i>-2.1%</i>	<i>3.8%</i>	<i>15.4%</i>	<i>3.6%</i>	<i>9.5%</i>	<i>5.2%</i>
1935 Juvenile Ct - CASA Program						
Salaries & Wages	-	-	-	41,863	48,384	51,638
Benefits	-	-	-	18,132	19,446	21,134
Supplies	-	-	-	10,500	-	-
Supplies	-	-	-	11,792	-	-
<i>Total CASA Program</i>	<i>-</i>	<i>-</i>	<i>-</i>	<i>82,287</i>	<i>67,830</i>	<i>72,772</i>
<i>Percent Change from Previous Year</i>	<i>0.0%</i>	<i>0.0%</i>	<i>0.0%</i>	<i>0.0%</i>	<i>-17.6%</i>	<i>7.3%</i>
1945 Juvenile Court - Comm Justice Center						
Salaries & Wages	132,561	160,888	206,542	220,560	245,444	256,164
Benefits	54,893	73,080	83,988	100,309	106,312	113,498
Supplies	3,110	4,909	4,922	10,050	6,050	6,050
Other Services & Charges	77,081	65,352	49,542	60,852	46,039	56,915
Operating Transfers	1,577	-	-	-	-	-
<i>Total Juvenile Ct -Comm Justice Ctr</i>	<i>269,222</i>	<i>304,229</i>	<i>344,994</i>	<i>391,771</i>	<i>403,845</i>	<i>432,627</i>
<i>Percent Change from Previous Year</i>	<i>0.7%</i>	<i>13.0%</i>	<i>13.4%</i>	<i>13.6%</i>	<i>3.1%</i>	<i>7.1%</i>
1950 Juvenile Court - CJS						
Salaries & Wages	131,235	130,445	68,485	103,304	110,301	116,457
Benefits	31,702	34,831	24,998	40,374	43,376	46,671
Supplies	1,562	13,459	14,169	23,189	25,189	25,189
Other Services & Charges	95,460	87,895	106,092	125,138	103,084	103,084
Residual Equity Transfers	-	-	4,000	-	-	-
<i>Total Juvenile Ct - CJS</i>	<i>259,959</i>	<i>266,630</i>	<i>217,744</i>	<i>292,005</i>	<i>281,950</i>	<i>291,401</i>
<i>Percent Change from Previous Year</i>	<i>-8.2%</i>	<i>2.6%</i>	<i>-18.3%</i>	<i>34.1%</i>	<i>-3.4%</i>	<i>3.4%</i>
1952 Juvenile Court - Home Port						
Other Services & Charges	-	-	18,000	-	-	-
<i>Total Juvenile Ct - Home Port</i>	<i>-</i>	<i>-</i>	<i>18,000</i>	<i>-</i>	<i>-</i>	<i>-</i>
<i>Percent Change from Previous Year</i>	<i>0.0%</i>	<i>0.0%</i>	<i>0.0%</i>	<i>-100.0%</i>	<i>0.0%</i>	<i>0.0%</i>

continued on next page

Expenditures Summary continued

	Actual 2005	Actual 2006	Actual 2007	Budget 2008	Budget 2009	Budget 2010
1953 Juvenile Court - Parole Detention						
Salaries & Wages	32,810	28,266	-	-	-	-
Benefits	11,661	12,769	829	-	-	-
Supplies	202	39	-	1,849	1,000	1,000
Other Services & Charges	-	-	12	8,000	8,849	8,849
<i>Total Juvenile Ct - Parole Det.</i>	<i>44,673</i>	<i>41,074</i>	<i>841</i>	<i>9,849</i>	<i>9,849</i>	<i>9,849</i>
<i>Percent Change from Previous Year</i>	<i>-7.1%</i>	<i>-8.1%</i>	<i>-98.0%</i>	<i>1071.1%</i>	<i>0.0%</i>	<i>0.0%</i>
1959 Juvenile Court - Becca Bill						
Salaries & Wages	52,907	57,138	55,372	60,012	51,149	54,592
Benefits	14,213	16,283	18,185	21,098	22,077	23,787
Supplies	-	35	-	500	500	500
Other Services & Charges	1,306	1,764	882	1,750	1,025	1,025
<i>Total Juvenile Ct - Becca Bill</i>	<i>68,426</i>	<i>75,220</i>	<i>74,439</i>	<i>83,360</i>	<i>74,751</i>	<i>79,904</i>
<i>Percent Change from Previous Year</i>	<i>6.7%</i>	<i>9.9%</i>	<i>-1.0%</i>	<i>12.0%</i>	<i>-10.3%</i>	<i>6.9%</i>
1961 Juvenile Court - DSHS						
Supplies	-	89	632	600	600	600
Other Services & Charges	1,258	815	-	650	225	225
<i>Total Juvenile Ct - DSHS</i>	<i>1,258</i>	<i>904</i>	<i>632</i>	<i>1,250</i>	<i>825</i>	<i>825</i>
<i>Percent Change from Previous Year</i>	<i>-71.1%</i>	<i>-28.1%</i>	<i>-30.1%</i>	<i>97.8%</i>	<i>-34.0%</i>	<i>0.0%</i>
1962 Juvenile Court - CDDA Grant						
Salaries & Wages	15,276	-	-	-	-	-
Benefits	6,140	-	-	-	-	-
Supplies	2,849	5,291	4,163	6,200	6,200	6,200
Other Services & Charges	21,443	21,176	22,870	25,730	25,459	25,459
<i>Total Juvenile Ct - CDDA Grant</i>	<i>45,708</i>	<i>26,467</i>	<i>27,033</i>	<i>31,930</i>	<i>31,659</i>	<i>31,659</i>
<i>Percent Change from Previous Year</i>	<i>-9.8%</i>	<i>-42.1%</i>	<i>2.1%</i>	<i>18.1%</i>	<i>-0.8%</i>	<i>0.0%</i>
1963 Juvenile Court - CJAA-DSHS Misc						
Salaries & Wages	40,794	45,335	60,905	60,012	65,904	68,424
Benefits	4,839	5,858	16,111	21,056	22,477	24,007
Supplies	4,516	9,132	5,607	1,002	1,002	1,002
Other Services & Charges	12,785	14,885	25,437	31,771	11,800	11,800
<i>Total Juvenile Ct-CJAA-DSHS</i>	<i>62,934</i>	<i>75,210</i>	<i>108,060</i>	<i>113,841</i>	<i>101,183</i>	<i>105,233</i>
<i>Percent Change from Previous Year</i>	<i>-13.5%</i>	<i>19.5%</i>	<i>43.7%</i>	<i>5.3%</i>	<i>-11.1%</i>	<i>4.0%</i>
1964 Juvenile Court - Teen Court						
Other Services & Charges	18,500	18,500	18,500	18,500	18,500	18,500
<i>Total Juvenile Ct - Teen Court</i>	<i>18,500</i>	<i>18,500</i>	<i>18,500</i>	<i>18,500</i>	<i>18,500</i>	<i>18,500</i>
<i>Percent Change from Previous Year</i>	<i>0.0%</i>	<i>0.0%</i>	<i>0.0%</i>	<i>0.0%</i>	<i>0.0%</i>	<i>0.0%</i>

continued on next page

Expenditures Summary continued

	Actual 2005	Actual 2006	Actual 2007	Budget 2008	Budget 2009	Budget 2010
1965 Juvenile Court - GJJAC - JDAI						
Salaries & Wages	25,943	3,301	-	-	-	-
Benefits	2,405	333	-	-	-	-
Supplies	1,901	226	64	-	-	-
Other Services & Charges	25,474	18,981	8,439	-	-	-
<i>Total Juvenile Ct - GJJAC-JDAI</i>	<i>55,723</i>	<i>22,841</i>	<i>8,503</i>	<i>-</i>	<i>-</i>	<i>-</i>
<i>Percent Change from Previous Year</i>	<i>947.6%</i>	<i>-59.0%</i>	<i>-62.8%</i>	<i>-100.0%</i>	<i>0.0%</i>	<i>0.0%</i>
1970 Juvenile Court - Res. Care						
Salaries & Wages	808,618	763,192	786,660	855,335	882,018	933,271
Benefits	246,336	283,243	301,577	384,005	401,434	432,744
Supplies	70,491	73,574	84,544	86,600	85,700	85,700
Other Services & Charges	185,378	187,031	209,321	223,384	230,521	236,790
Capital Outlay	6,154	-	-	-	-	-
<i>Total Juvenile Ct - Res. Care</i>	<i>1,316,977</i>	<i>1,307,040</i>	<i>1,382,102</i>	<i>1,549,324</i>	<i>1,599,673</i>	<i>1,688,505</i>
<i>Percent Change from Previous Year</i>	<i>12.0%</i>	<i>-0.8%</i>	<i>5.7%</i>	<i>12.1%</i>	<i>3.2%</i>	<i>5.6%</i>
1995 Juvenile - DOE Comm Litter Clean						
Salary & Wages	3,896	124	-	-	-	-
Benefits	397	13	-	-	-	-
<i>Total Juvenile Ct - DOE</i>	<i>4,293</i>	<i>137</i>	<i>-</i>	<i>-</i>	<i>-</i>	<i>-</i>
<i>Percent Change from Previous Year</i>	<i>19.4%</i>	<i>-96.8%</i>	<i>-100.0%</i>	<i>0.0%</i>	<i>0.0%</i>	<i>0.0%</i>
<b>TOTAL JUVENILE COURT</b>	<b>3,567,203</b>	<b>3,612,289</b>	<b>3,901,614</b>	<b>4,335,362</b>	<b>4,518,305</b>	<b>4,760,151</b>
<i>Percent Change from Previous Year</i>	<i>2.9%</i>	<i>1.3%</i>	<i>8.0%</i>	<i>11.1%</i>	<i>4.2%</i>	<i>5.4%</i>

## Services

### Administration

#### **Juvenile Court Administration Intake and Probation Services**

Provides Court related information requested by the judge, prosecutor, and public defender; keeps offenders informed of all hearings; administers risk assessment; provides pre-trial monitoring, provides post adjudication supervision and monitoring.

#### **Court Appointed Special Advocate Program**

Coordinates Volunteer CASA program.

#### **Community Justice Accountability Act (CJAA), FFT, and Coordination of Services**

Provides Aggression Replacement Training (ART), Family Functional Therapy (FFT) and Coordination of Services to youth and their families.

### Detention

#### **Parole Detention/Diagnostics**

Custody & care of youth held in detention who are under JRA Parole Supervision or pending transportation to the institutions. Pre/post diagnostic report writing on youth committed to JRA.

#### **Juvenile Detention**

Juvenile Detention is a safe and secure environment for youth who have been arrested pending a Court appearance or who have been sentenced to serve time after a Court appearance.

### Probation

#### **Community Justice Programs**

Community Justice Programs provide community based alternatives to detention and case management support for probation officers.

#### **Consolidated Juvenile Services - Diversion**

Eligible minor & first offenders are referred to the Diversion Unit, where they may choose to enter a diversion agreement in lieu of going to Court and being placed on probation.

#### **Consolidated Juvenile Services - SSODA**

All first-time adjudicated felony sex offenders are evaluated for risk to the community and suitability for community based treatment.

#### **Becca Bill Program**

The Becca Bill programs fall into 3 categories: At-Risk Youth; Children in Need of Services (CHINS); and Truancy. Court intervention, case planning, and monitoring services are provided.

#### **Victim Restoration Program**

The Victim Restoration Program provides advocacy services to victims of juvenile crime including Court process information, victim impact statements, restitution claim processing, restitution collection and general support.

Services continued

**Chemical Dependency Disposition Alternative (CDDA)**

E3SHB 3900 allows for the evaluation of chemically abusing youth to be considered for a disposition alternative that allows judges to order treatment instead of confinement.