

Health & Human Services

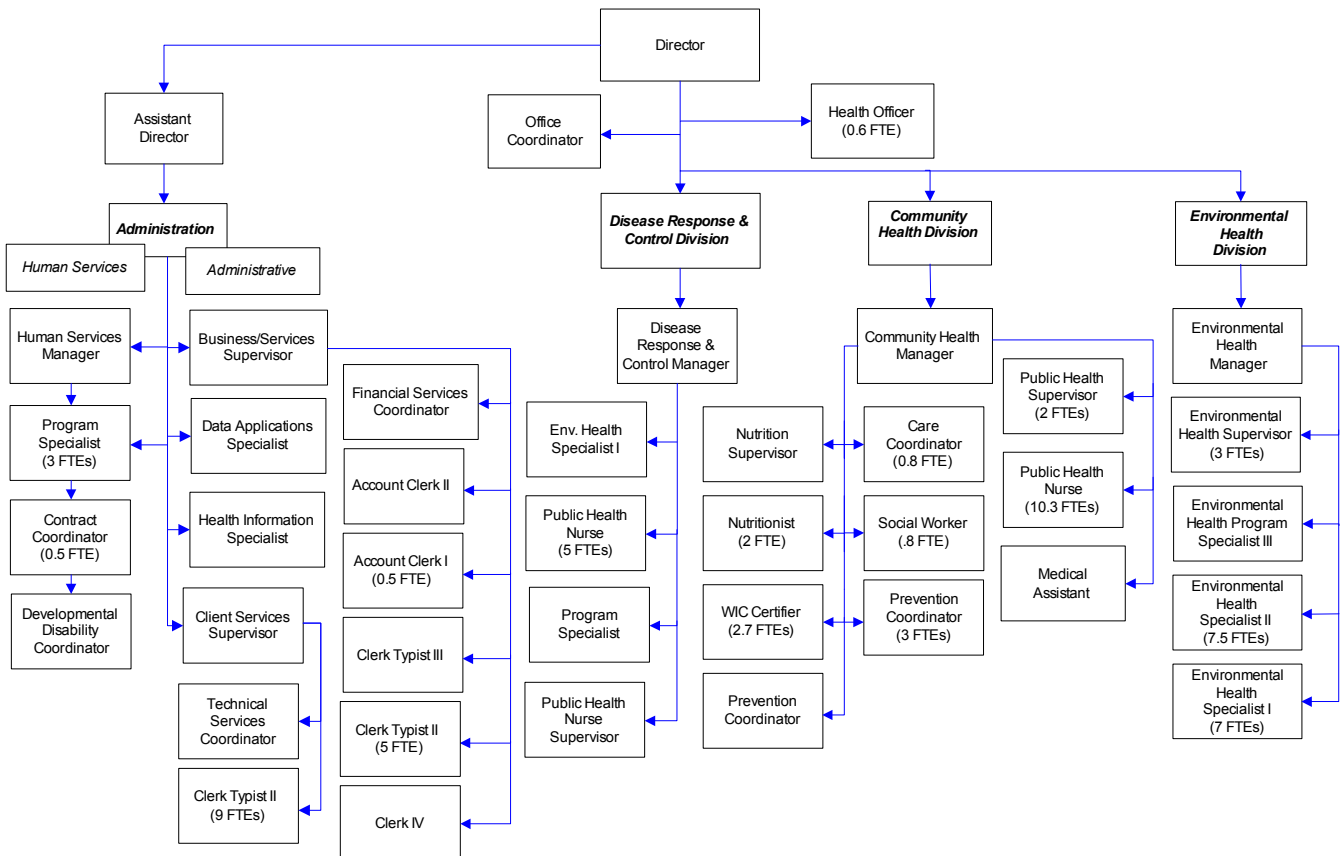
Health & Human Services provides a variety of services to the public: restaurant permits and inspections, food worker health permits, investigation of food-borne illness, solid waste and sewage permits, water quality reviews, animal to human disease investigations, communicable disease screening, treatment, investigation, immunizations, vital records (birth and death certificates, etc.), personal health services, services to the developmentally disabled and their families, mental health treatment coordination, chemical dependency treatment coordination and substance abuse prevention.

FTE's for this department

Year	2005	2006	2007	*2008	*2009	*2010
FTE	80.50	80.70	84.70	90.70	86.70	85.70

*budget

The chart below shows the organizational structure for 2009 only.



Mission & Objectives

Mission

Preserve and enhance the health and quality of life in Whatcom County.

Community Health

Work with individuals, families and communities to promote wellness, prevent disease and injury, identify and resolve health problems and to ensure access to services as defined by the Standards for Public Health in Washington State.

Disease Response & Control

Protect the population of Whatcom County from communicable disease through case investigation and surveillance and to be leaders in Public Health preparedness for the county.

Environmental Health

Minimize the public's exposure to environmental health hazards, such as harmful chemicals and biological agents.

Human Services

Be responsive to the needs of Whatcom County citizens by ensuring quality mental health, substance abuse, and developmental disability services.

Objectives

Community Health

- Implement electronic health record system for all clinical/direct service programs to better track health status and outcomes.
- Implement evidence-based intensive nurse home visitation model to improve health outcomes for high-risk first-time low-income mothers and their infants.
- Assess and monitor priority health concerns, including maternal tobacco use, post-partum depression, breastfeeding, family planning, immunizations, oral health, and linkage to

primary health care provider for all high risk clients.

- Collaborate with the community to create an enhanced system of services and supports for children with developmental disorders and their families.
- Mobilize the community to increase physical activity opportunities for youth and adults through environmental and policy based approaches.
- Work with community partners to develop and implement breastfeeding friendly policies at the local hospital and community worksites.
- Provide technical assistance and support to local medical providers in utilizing the state immunization registry and recall/reminder systems to improve immunization rates.
- Work with regional partners to develop and implement smoke-free policies for housing, parks, and autos to decrease exposure to second-hand tobacco smoke.
- Support targeted youth prevention programs that decrease favorable attitudes to alcohol, tobacco and other drugs. Increase youth connections to trusted community adults.

Disease Response & Control

- Complete MOUs with tribes, school districts, and other local partners to clarify roles, responsibilities and mutual aid.
- Update all HD emergency response plans including the Pandemic Flu Plan and the Strategic National Stockpile Plan.
- Exercise the Health Department's Pandemic Influenza Plan including an alternative care facilities component.
- Develop and implement "real-time" disease surveillance system in coordination with SJH and local urgent care clinics for the 2010

Objectives continued

- Olympics and beyond.
- Update all disease protocols and tasks.
- Establish a local Health Care Coalition to ensure that a system is in place to respond to community-wide disasters.
- Update mortuary care plan.
- Improve the timeliness of case reporting, investigation and completion regarding notifiable conditions.
- Improve the frequency of health care provider reporting of “suspect cases” regarding notifiable conditions.
- Implement Expedited Partner Therapy pilot program to reduce transmission of Chlamydia and Gonorrhea.

Environmental Health

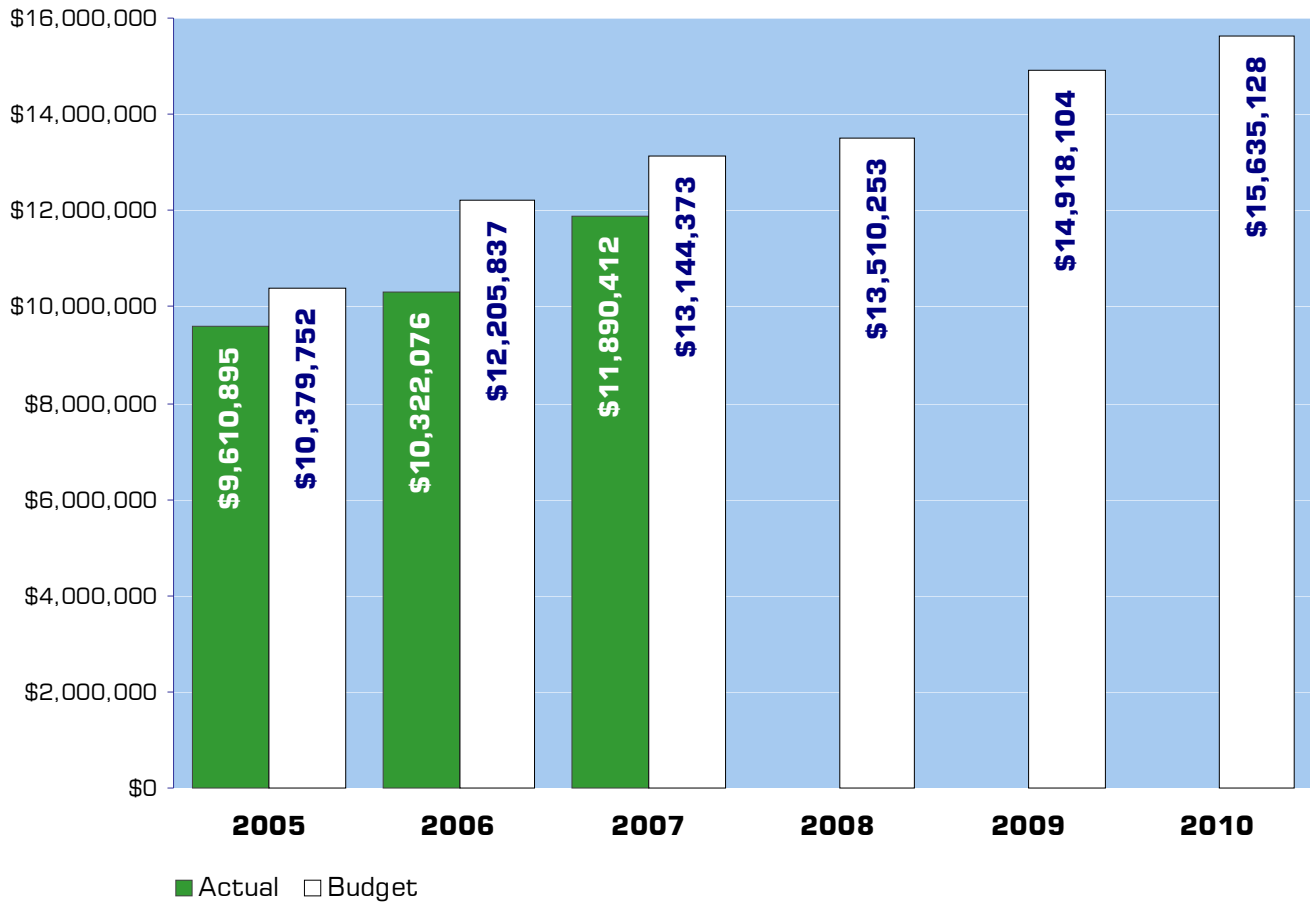
- Provide technical assistance to targeted small businesses to reduce or eliminate waste streams through utilization of the Local Source Control Grant.
- Collaborate with Washington State Department of Health in developing an internet based food worker training and testing curriculum.
- Utilize and improve the On Site Sewage (OSS) database to track progression of operation and maintenance throughout the county.
- Develop and implement home owner training for those seeking to perform their own OSS inspections.
- Implement loan/grant program to assist homeowners with repair of failing OSS systems.
- Transition all food service inspections from paper to electronic for greater efficiency.
- Ensure food service inspections are provided to all establishments at least once a year.

- Enhance and increase Group B System water quality monitoring and technical assistance.
- Continue coordination with Washington State Department of Health in addressing nitrate problems in public water systems.

Human Services

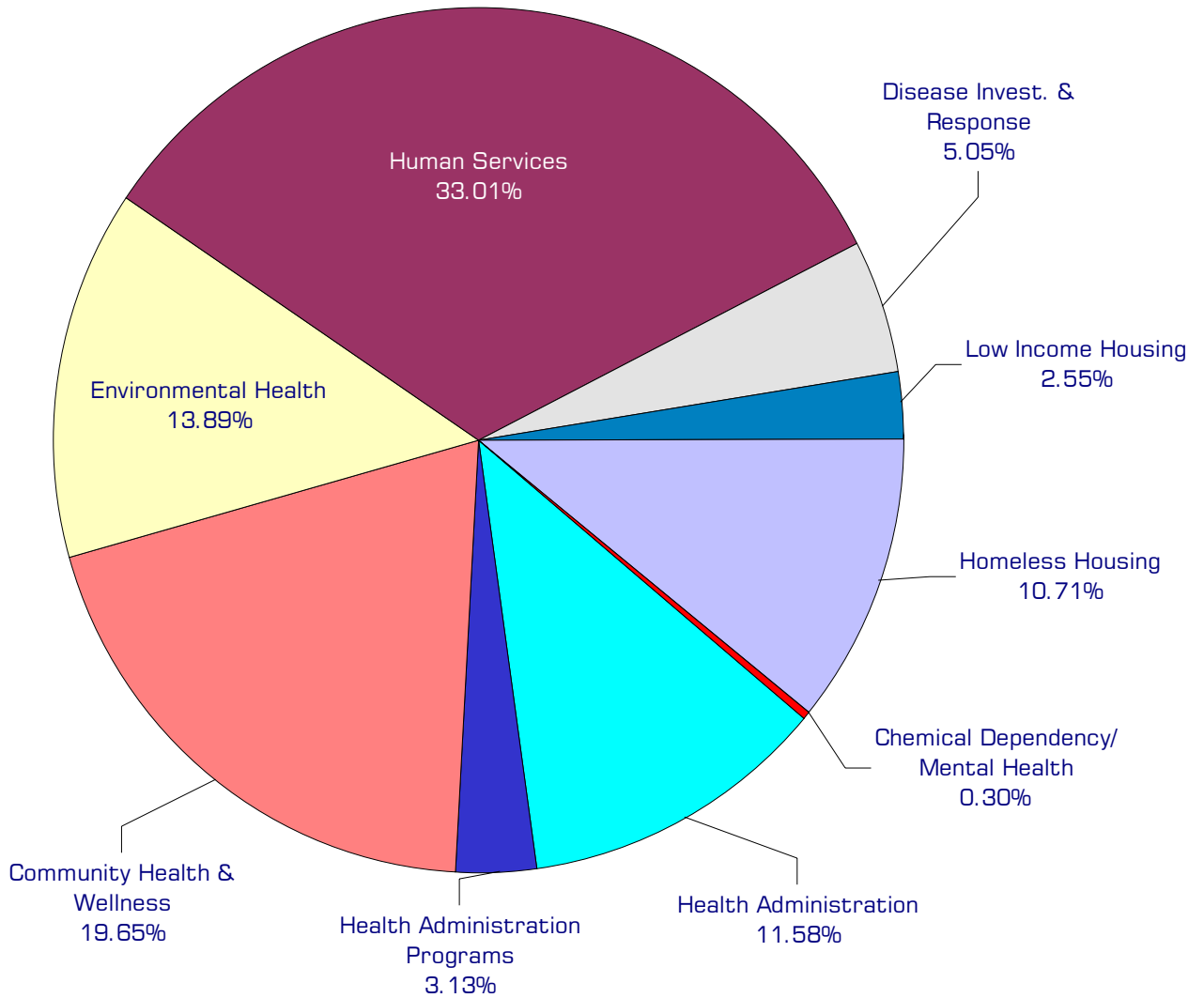
- Improve access to healthcare for low income and uninsured residents by contracting with the Whatcom Alliance for Healthcare Access.
- Develop and coordinate a program to increase post-school employment and community inclusion opportunities for young adults with developmental disabilities.
- Increase the number of adults with developmental disabilities who are earning wages upon graduation from high school.
- Ensure student and family preparedness for transition into employment and adult services.
- Increase capacity to provide early intervention services (EIS) to eligible children ages birth to three.
- Implement Homeless Grant Assistance Program (HGAP) funded Offender Re-Entry Project to provide housing assistance and support to high risk offenders exiting prison and Whatcom County jail and who are homeless.
- Develop housing resources for substance abusing people that stabilize people in housing and treatment simultaneously.
- Ensure that homeless families and individuals remain in or obtain permanent housing through the activities of the newly formed Homeless Service Center.
- Ensure implementation of evidenced based mental health and substance abuse programs utilizing one tenth of 1% sales tax funding.

Expenditure Trends



NOTE: Capital expenditures and interfund operating transfers are not shown to more accurately reflect ongoing operational costs.

2009-2010 Budget by Program



NOTE: Capital expenditures and interfund operating and residual equity transfers are not shown to more accurately reflect ongoing operational costs.

Program Summary

	Actual 2005	Actual 2006	Actual 2007	Budget 2008	Budget 2009	Budget 2010
OPERATIONS						
General Fund						
Health Administration	1,283,080	1,369,142	1,552,778	1,576,495	1,742,774	1,794,216
Health Administration Programs	369,140	448,068	608,629	458,905	469,223	485,765
Community Health & Wellness	2,372,797	2,650,457	2,693,924	3,033,021	2,949,091	3,097,735
Environmental Health	1,328,417	1,524,853	1,621,839	2,086,007	2,039,209	2,205,374
Human Services	3,443,753	3,455,243	4,122,076	4,417,597	5,029,411	5,054,738
Disease Invest. & Response	558,489	492,432	371,702	805,228	752,693	789,517
121 Low Income Housing	245,319	372,566	882,362	410,000	265,000	515,000
122 Homeless Housing	9,900	9,315	37,102	723,000	1,624,410	1,647,490
124 Chemical Dep/Mental Health	-	-	-	-	46,293	45,293
<i>Total Health Operations</i>	9,610,895	10,322,076	11,890,412	13,510,253	14,918,104	15,635,128
CAPITAL						
General Fund						
Health Administration	-	11,717	-	-	-	-
Health Administration Programs	5,331	-	-	-	-	-
Community Health & Wellness	-	-	-	-	8,800	-
Environmental Health	-	13,935	-	-	-	-
Human Services	-	-	-	22,320	12,000	-
Disease Invest. & Response	-	-	-	25,000	-	-
<i>Total Health Capital</i>	5,331	25,652	-	47,320	20,800	-
TRANSFERS						
General Fund						
Health Administration	1,096	1,027	470	2,032	-	-
Community Health & Wellness	-	-	-	-	8,800	-
Environmental Health	-	-	43,332	53,000	-	-
122 Homeless Housing	-	4,856	20,000	20,000	31,180	31,180
124 Chemical Dep/Mental Health	-	-	-	-	155,000	-
<i>Total Health Transfers</i>	1,096	5,883	63,802	75,032	194,980	31,180
TOTAL HEALTH	9,617,322	10,353,611	11,954,214	13,632,605	15,133,884	15,666,308
<i>Percent Change from Previous Year</i>	8.4%	7.7%	15.5%	14.0%	11.0%	3.5%

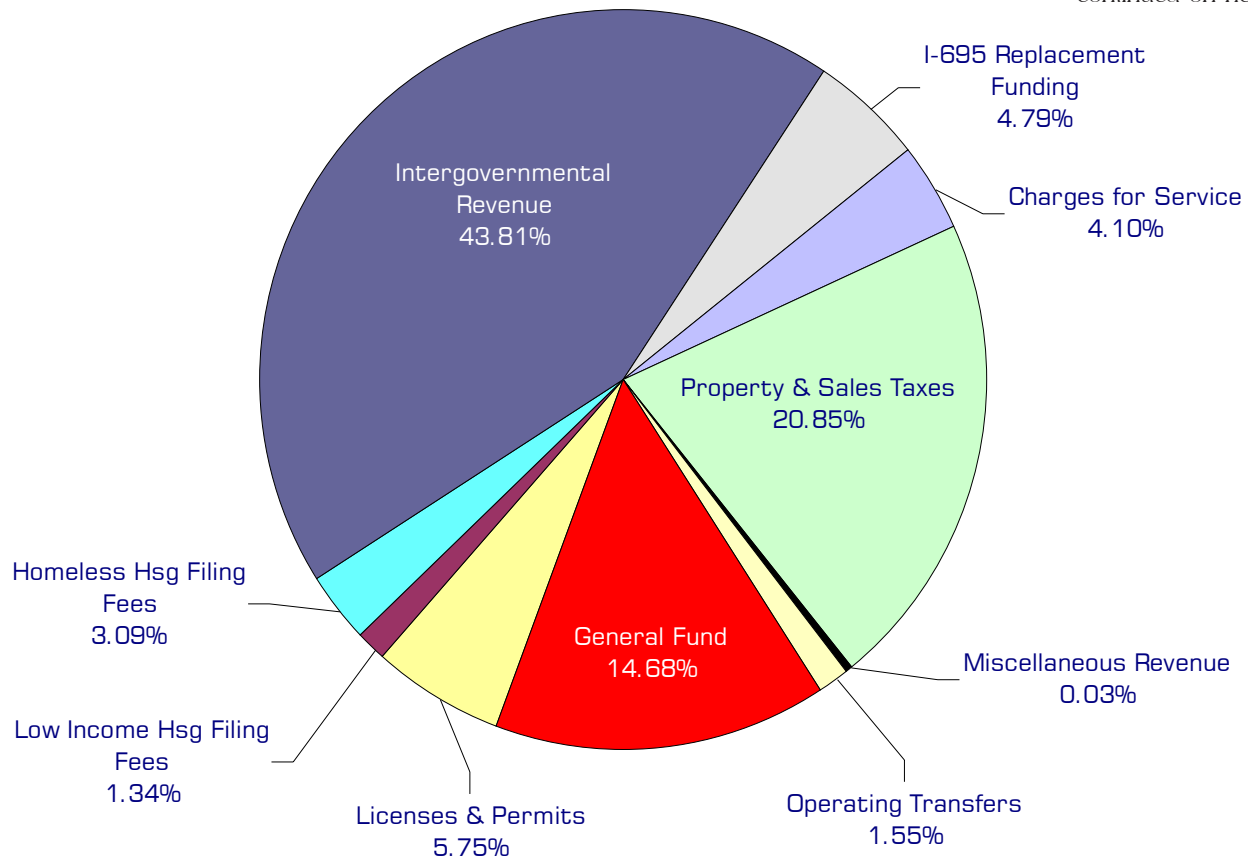
2009-2010 Funding Sources

	2009	2010
Licenses & Permits	1,027,450	1,027,450
Low Income Hsg Filing Fees	240,000	240,000
Homeless Hsg Filing Fees	553,000	553,000
Intergovernmental Revenue	7,830,838	7,832,543
I-695 Replacement Funding	855,863	855,863
Charges for Service	673,029	794,029
Property & Sales Taxes	3,369,000	4,085,000
Miscellaneous Revenue	6,064	6,064
Operating Transfers	354,940	199,940
General Fund	2,401,533	2,845,910
Fund Balance*	(2,393,613)	(2,804,671)
Total Funding	14,918,104	15,635,128

Licenses & Permits

The Health and Human Services Department issues various licenses and permits. These include business licenses for restaurants, taverns and grocery stores, RV and mobile home parks, solid waste sites, sewage system designers, cleaners and installers, food handlers, and water recreation facilities. Additionally, the department also grants noncommercial permits for septic tank installation and repair.

continued on next page



**Fund balance not included in above chart.*

Funding Sources continued

Low Income Housing & Homeless Housing Filing Fees

Surcharges on documents recorded by the County Auditor. Authorized by RCW 36.22.178 & 179 to be used to provide low income and homeless housing assistance.

Intergovernmental Revenue

A variety of federal and state grants as well as intergovernmental payments for service are received by the department. These grants fund women, infant, and children programs, substance abuse counseling and recovery, developmentally disabled assistance, communicable disease and homeless housing programs.

I-695 Replacement Funding

Initiative 695 repealed the motor vehicle excise tax in 1999. This is money that the state legislature provides to replace the lost funding.

Charges for Service

Fees for the provision of certain services the department provides such as sewage site inspections, building plan review, birth and death records, and immunizations.

Property & Sales Taxes

RCW 71.20.110 requires counties to levy two and one half cents per thousand dollars of assessed value for community services for persons with developmental disabilities or mental health problems. Pursuant to RCW 82.14.460, Whatcom County adopted a one tenth of one percent sales tax to take effect in January 2009. The purpose of this tax is to provide for new or expanded chemical dependency or mental health treatment services.

Miscellaneous Revenue

Small amounts of revenue received mainly from contributions and state timber sales.

Operating Transfers

Operating transfers of \$117,800 from the Solid Waste Fund to support solid waste enforcement efforts, \$5,000 from Community Development Fund to support mental health service, \$42,000 from the Jail Fund to support counseling services provided to inmates, \$31,180 from the Homeless Housing Fund for administrative costs related to the county's Homeless Housing Plan, and \$3,960 from Solid Waste to support the Cedarville Post closure costs. In addition, in 2009 there is a \$155,000 cashflow loan from the General Fund to the newly established Chemical Dependency/Mental Health Fund to cover the first four months of operating expenses until the first sales tax payments are received.

General Fund

Undedicated General Fund resources.

Fund Balance

Fund balance in the Low Income Housing Fund is expected to decrease by \$25,000 in 2009 and \$275,000 in 2010. In Homeless Housing, the fund balance is expected to decrease by \$117,513 in 2009 and \$140,593 in 2010. Chemical Dependency/Mental Health Fund is expected to increase by \$2,536,126 in 2009 and \$3,220,264 in 2010 as programming for this new funding source is not yet complete as this budget goes to print.

Performance / Activity Measures

	Actual 2005	Actual 2006	Actual 2007	Projected 2008	Projected 2009	Projected 2010
<i>Administration</i>						
Birth certificates	7,499	7,800	7,800	7,300	7,500	7,500
Death certificates	2,271	1,900	2,025	2,000	2,000	2,000
Additional Death Certificates	4,637	5,000	5,000	4,500	4,500	4,500
<i>Community Health</i>						
<i>HIV/AIDS</i>						
Individuals participating in NEP referred to drug treatment	50	20	106	66	90	99
Needles exchanged in Needle Exchange Program (NEP)	117,315	89,062	103,963	144,932	159,500	175,450
<i>Immunization</i>						
Doses of vaccine administered in HD clinic	3,084	2,682	2,625	2,916	2,890	2,890
Doses of state-supplied childrens' vaccine distributed to physician offices	57,270	89,569	78,094	74,856	72,950	72,950
<i>Nutrition</i>						
WIC women who initiated breast feeding	89%	90%	88%	90%	90%	91%
<i>Oral Health</i>						
Medicaid eligible children aged 0-5 who received dental services	39%	41%	40%	40%	41%	42%
<i>Parent/Child</i>						
Home visits	2,777	2,296	1,261	1,318	1,500	1,500
Births to teens under 18	54	56	61	65	65	65
Speciality clinic visits	104	136	183	136	136	136
<i>Substance Abuse Prevention</i>						
Juvenile alcohol & drug law arrests/100,000	1,400*	1,518	1,510	1,502	1,494	1,486
Adult alcohol & drug arrests/100,000	1,500*	1,317	1,298	1,279	1,260	1,241
<i>Tobacco Prevention</i>						
% of retailers who sell to minors during "compliance checks"	15.3%	9.6%	14.3%	11%	7%	5%
Number of calls to Tobacco Quitline	654	650	506	650	750	750

continued on next page

Performance / Activity Measures continued

	Actual 2005	Actual 2006	Actual 2007	Projected 2008	Projected 2009	Projected 2010
<i>Disease Response & Control</i>						
<i>Environmentally Related Diseases</i>						
Campylobacteriosis rate per 100,000	34.3	30.4	34.1	34.1	32.4	35.1
E. coli 0157:H7 rate per 100,000	6.6	5.4	5.9	5.9	6.4	6.8
Giardiasis rate per 100,000	8.8	14.7	20	20.0	13.5	17.2
Salmonellosis rate per 100,000	8.3	11.9	13	13	10.8	11.9
Hepatitis A rate per 100,000	2.2	3.3	3.2	3.0	2.2	3.2
Shigellosis rate per 100,000	0.0	14.1	2.7	2.7	2.7	3.8
<i>Respiratory Diseases & TB Control</i>						
Meningococcal rate per 100,000	1.1	0.0	.5	.5	0	0
Pertussis rate per 100,000	79.9	31.5	35.7	32.0	32.4	31.3
Tuberculosis rate per 100,000	2.8	2.8	3.8	3.8	3.8	3.8
People completing treatment of latent TB	74%	74.6%	67.6%	80%	82%	85%
People with active TB completing treatment	100%	100%	100%	100%	100%	100%
<i>STD & Bloodborne Diseases</i>						
Reported STD's receiving recommended treatment	99.5%	95%	97%	98%	98%	98%
AIDS/HIV rate per 100,000	6.1	3.3	5.4	5.9	11	12.2
Chlamydia rate per 100,000	237.3	281.6	248.7	248.7	262.4	250.1
Gonorrhea rate per 100,000	59.2	55.9	36.2	36.2	55.1	58.2
Hepatitis B rate per 100,000	5.5	0	0	5.1	5.1	5.1
<i>Environmental Health</i>						
<i>Chemical & Physical Hazards</i>						
Number of clandestine drug lab incidents and investigations	8	9	5	6	6	6
<i>Drinking Water Program</i>						
Certificates for Drinking Water Availability issued	602	612	506	600	550	500
<i>Food Program</i>						
Routine food service inspections	693	802	1,038	1,150	1,100	1,100
Food service inspections resulting in scores > 35 critical violation points	8.5%	8.5%	8.5%	8.5%	8.5%	8.5%

continued on next page

Performance / Activity Measures continued

	Actual 2005	Actual 2006	Actual 2007	Projected 2008	Projected 2009	Projected 2010
<i>Living Environment</i>						
Rabies post-exposure series recommended	44	13	7	6	6	6
<i>On-Site Sewage</i>						
On-site sewage complaints/year	107	130	163	150	250	250
Septic System permits issued	805	725	508	450	400	350
Percent of Septic Tanks Pumped	6.7%	8.6%	8.2%	7.2%	9%	10%
<i>Solid Waste</i>						
Complaints/year	145	161	179	175	175	175
<i>Human Services</i>						
Crisis Services:						
Rate of Detox Admissions (duplicated per 100,000)	1,336	1,708	1,745	1,745	1,800	1,900
Rate of Detox Admissions (unduplicated per 100,000)	1,195	1,037	987	990	1,100	1,200
<i>Developmental Disabilities Services</i>						
Individuals in employment programs	207	268	287	287	290	293
Participants in Community Access/Retirement	77	22	15	15	15	15
Children in Early Intervention Programs	91	95	135	135	135	135
<i>Housing</i>						
Homeless prevention households served through the Homeless Service Center (prevented from becoming homeless)	n/a	n/a	n/a	n/a	300	300
Homeless households served (moved from homelessness into housing)	n/a	n/a	n/a	n/a	195	195
High risk homeless offenders re-entering the community who receive housing assistance	n/a	n/a	n/a	n/a	40	45

continued on next page

Performance / Activity Measures continued

	Actual 2005	Actual 2006	Actual 2007	Projected 2008	Projected 2009	Projected 2010
<i>Mental Health Services</i>						
Monthly average clients receiving outpatient services	1,559	1,529	1,525	1,528	1,725	1,825
Clients Screened at Crisis Phone Line annually	20,514	24,725	24,465	24,500	24,500	24,500
Involuntary detentions	415	451	469	480	495	506
<i>Substance Abuse Services</i>						
Clients who successfully completed treatment	38.2%	38.1%	47.1%	47%	48%	50%
Rate of treatment admissions (duplicated per 100,000)	498	498	484	500	650	670

Expenditures Summary

	Actual 2005	Actual 2006	Actual 2007	Budget 2008	Budget 2009	Budget 2010
HEALTH						
Health Administration						
Salaries & Wages	425,114	432,652	473,239	426,631	469,251	492,262
Benefits	144,609	180,649	190,108	208,190	230,004	242,158
Supplies	16,367	24,675	31,854	47,767	40,290	37,690
Other Services & Charges	674,355	680,945	807,356	893,907	1,003,229	1,022,106
Capital Outlay	-	11,717	-	-	-	-
Debt Service	22,635	50,221	50,221	-	-	-
Operating Transfers	1,096	1,027	470	2,032	-	-
Total Health Administration	1,284,176	1,381,886	1,553,248	1,578,527	1,742,774	1,794,216
<i>Percent Change from Previous Year</i>	-17.6%	7.6%	12.4%	1.6%	10.4%	3.0%
Health Administration Programs						
Salaries & Wages	144,192	178,450	198,525	212,416	233,903	248,687
Benefits	12,874	15,917	16,550	43,766	20,820	22,578
Supplies	45,755	31,604	91,492	9,000	8,500	8,500
Other Services & Charges	166,319	222,097	302,062	193,723	206,000	206,000
Capital Outlay	5,331	-	-	-	-	-
Total Health Administration Program	374,471	448,068	608,629	458,905	469,223	485,765
<i>Percent Change from Previous Year</i>	87.8%	19.7%	35.8%	-24.6%	2.2%	3.5%
Community Health & Wellness						
Salaries & Wages	1,627,342	1,834,097	1,810,438	2,029,515	1,907,906	2,013,612
Benefits	449,443	522,108	588,775	683,186	741,800	785,938
Supplies	94,307	124,627	125,497	119,700	111,465	111,465
Other Services & Charges	201,705	169,625	169,214	200,620	196,720	186,720
Operating Transfers	-	-	-	-	8,800	-
Total Community Health	2,372,797	2,650,457	2,693,924	3,033,021	2,966,691	3,097,735
<i>Percent Change from Previous Year</i>	11.2%	11.7%	1.6%	12.6%	-2.2%	4.4%
Environmental Health						
Salaries & Wages	961,631	1,037,832	1,104,465	1,385,690	1,283,433	1,428,522
Benefits	252,563	329,197	353,436	445,682	541,951	573,027
Supplies	33,484	75,288	52,712	66,975	40,850	40,850
Other Services & Charges	80,739	82,536	111,226	187,660	172,975	162,975
Capital Outlay	-	13,935	-	-	-	-
Residual Equity Transfers	-	-	43,332	53,000	-	-
Total Environmental Health	1,328,417	1,538,788	1,665,171	2,139,007	2,039,209	2,205,374
<i>Percent Change from Previous Year</i>	7.5%	15.8%	8.2%	28.5%	-4.7%	8.1%

continued on next page

Expenditures Summary continued

	Actual 2005	Actual 2006	Actual 2007	Budget 2008	Budget 2009	Budget 2010
Human Services						
Salaries & Wages	191,003	204,094	212,170	276,759	237,487	250,812
Benefits	73,975	99,204	112,308	132,421	107,438	115,731
Supplies	18,356	12,025	13,163	9,800	9,000	7,800
Other Services & Charges	3,160,419	3,139,920	3,784,435	3,998,617	4,675,486	4,680,395
Capital Outlay	-	-	-	22,320	12,000	-
<i>Total Human Services</i>	<i>3,443,753</i>	<i>3,455,243</i>	<i>4,122,076</i>	<i>4,439,917</i>	<i>5,041,411</i>	<i>5,054,738</i>
<i>Percent Change from Previous Year</i>	<i>12.2%</i>	<i>0.3%</i>	<i>19.3%</i>	<i>7.7%</i>	<i>13.5%</i>	<i>0.3%</i>
Disease Invest. & Response						
Salaries & Wages	393,073	247,294	261,276	484,531	514,844	541,716
Benefits	120,025	157,073	94,435	203,897	203,409	210,861
Supplies	22,546	25,959	7,676	49,150	23,050	25,550
Other Services & Charges	22,845	62,106	8,315	67,650	11,390	11,390
Capital Outlay	-	-	-	25,000	-	-
<i>Total Disease Invest. & Response</i>	<i>558,489</i>	<i>492,432</i>	<i>371,702</i>	<i>830,228</i>	<i>752,693</i>	<i>789,517</i>
<i>Percent Change from Previous Year</i>	<i>-15.9%</i>	<i>-11.8%</i>	<i>-24.5%</i>	<i>123.4%</i>	<i>-9.3%</i>	<i>4.9%</i>
TOTAL GENERAL FUND	9,362,103	9,966,874	11,014,750	12,479,605	13,012,001	13,427,345
<i>Percent Change from Previous Year</i>	<i>5.7%</i>	<i>6.5%</i>	<i>10.5%</i>	<i>13.3%</i>	<i>4.3%</i>	<i>3.2%</i>
121 LOW INCOME HOUSING FUND						
Other Services & Charges	245,319	372,566	882,362	410,000	265,000	515,000
<i>Total Low Income Housing Fund</i>	<i>245,319</i>	<i>372,566</i>	<i>882,362</i>	<i>410,000</i>	<i>265,000</i>	<i>515,000</i>
<i>Percent Change From Previous Year</i>	<i>1652.3%</i>	<i>51.9%</i>	<i>136.8%</i>	<i>-53.5%</i>	<i>-35.4%</i>	<i>94.3%</i>
122 HOMELESS HOUSING FUND						
Homeless Housing Operations						
Salaries & Wages	-	-	-	55,000	85,918	91,853
Benefits	-	-	-	-	20,870	22,615
Other Services & Charges	9,900	9,315	37,102	668,000	1,517,622	1,533,022
Operating Transfers	-	4,856	20,000	20,000	31,180	31,180
<i>Total Homeless Housing Operations</i>	<i>9,900</i>	<i>14,171</i>	<i>57,102</i>	<i>743,000</i>	<i>1,655,590</i>	<i>1,678,670</i>
<i>Percent Change from Previous Year</i>	<i>0.0%</i>	<i>43.1%</i>	<i>302.9%</i>	<i>1201.2%</i>	<i>122.8%</i>	<i>1.4%</i>
124 CHEMICAL DEPENDENCY/MENTAL HEALTH FUND						
124100 Chemical Dependency/ Mental Health						
Salaries & Wages	-	-	-	-	45,293	45,293
Debt Service	-	-	-	-	1,000	-
Operating Transfers	-	-	-	-	155,000	-
<i>Total Chem Depend/Mental Health</i>	<i>-</i>	<i>-</i>	<i>-</i>	<i>-</i>	<i>201,293</i>	<i>45,293</i>
<i>Percent Change from Previous Year</i>	<i>0.0%</i>	<i>0.0%</i>	<i>0.0%</i>	<i>0.0%</i>	<i>0.0%</i>	<i>-77.5%</i>
TOTAL HEALTH	9,617,322	10,353,611	11,954,214	13,632,605	15,133,884	15,666,308
<i>Percent Change from Previous Year</i>	<i>8.4%</i>	<i>7.7%</i>	<i>15.5%</i>	<i>14.0%</i>	<i>11.0%</i>	<i>3.5%</i>

Services

Administration

Community Health Assessment

Regular and systematic process of collecting, analyzing and making available information on the health of a community, including statistics on health status and community health needs, and the conduct of epidemiological and other studies of health problems.

Vital Records

The Vital Records program is responsible for the registration of all deaths occurring in Whatcom County, the issuance of burial permits, and the issuance of certified death certificates for Whatcom County deaths.

Community Health

Community Wellness/Chronic disease prevention program

Prevents chronic disease and increases community well-being by promoting strategies to encourage healthy behaviors through environmental changes, public health policies and community mobilization.

Parent & Child Services

Provides comprehensive health promotion and support services for pregnant women, children and families.

Adult Health/HIV

Conducts health promotion activities to decrease high risk behaviors and provides referrals to services for persons with HIV and related conditions.

Public Health Nutrition/WIC

Provides supplemental foods, nutrition education and community referrals to low income participants.

Oral Health

Provides support and facilitation for the local Oral Health Coalition (OHC) and coordinates the Access to Baby and Child Dentistry (ABCD) program.

Immunization Program

Administers vaccine to target populations; distributes and oversees state-supplied vaccines; provides consultation and quality assurance activities with health care providers.

Tuberculosis Program

Provides screening, diagnosis, treatment, and prevention of tuberculosis (TB).

Substance Abuse Prevention Program

Coordinates substance abuse prevention services to reduce substance use risk factors and increase protective factors among program participants, with a primary focus on youth.

Tobacco Prevention Program

Coordinates tobacco prevention and control activities, including educating the public about tobacco risks, connecting people with tobacco cessation resources, enforcing tobacco laws, advocating for smoke-free policies.

Services continued

Disease Response & Control**Communicable Disease Investigation/Surveillance**

Case investigation, contact notification, and surveillance for notifiable conditions. Education and consultation to the health care providers, and general public.

Emergency Response Planning (PHEPR)

Public health emergency preparedness, response and recovery.

Environmental Health**Drinking Water**

Ensures safe drinking water for public through approval of water sources, public water supplies, well construction and investigation of disease outbreaks and complaints.

Food Protection

Prevention of food borne disease through inspection of food services and education of food workers. Investigation of food borne illness and complaints.

Living Environment Program

Drowning prevention, injury prevention and investigation of exposures to diseases like rabies, West Nile Virus and Lyme Disease, investigation of complaints.

On-Site Sewage

Permitting and inspection of on-site sewage systems.

Solid Waste Monitoring

Oversight of solid waste management and disposal practices through public education and regulatory enforcement.

Chemical/ Physical Hazards

Public health response to chemical releases, public exposure to toxic substances and investigations of contaminated sites.

Human Services**Mental Health Services**

Local contractors provide an array of mental health services that are not provided by the NSMHA. Coordinates in the administration, planning, and quality assurance of North Sound Mental Health Association (NSMHA) funded services in Whatcom County.

Developmental Disabilities Services

Contracted employment training, day program and early intervention services for people with Developmental Disabilities.

Homeless Housing

The Homeless Housing program was created by the legislature to reduce homelessness in Washington State.

Substance Abuse Services

Whatcom County provides a comprehensive continuum of substance abuse services through subcontracts with local private and non-profit treatment providers.