

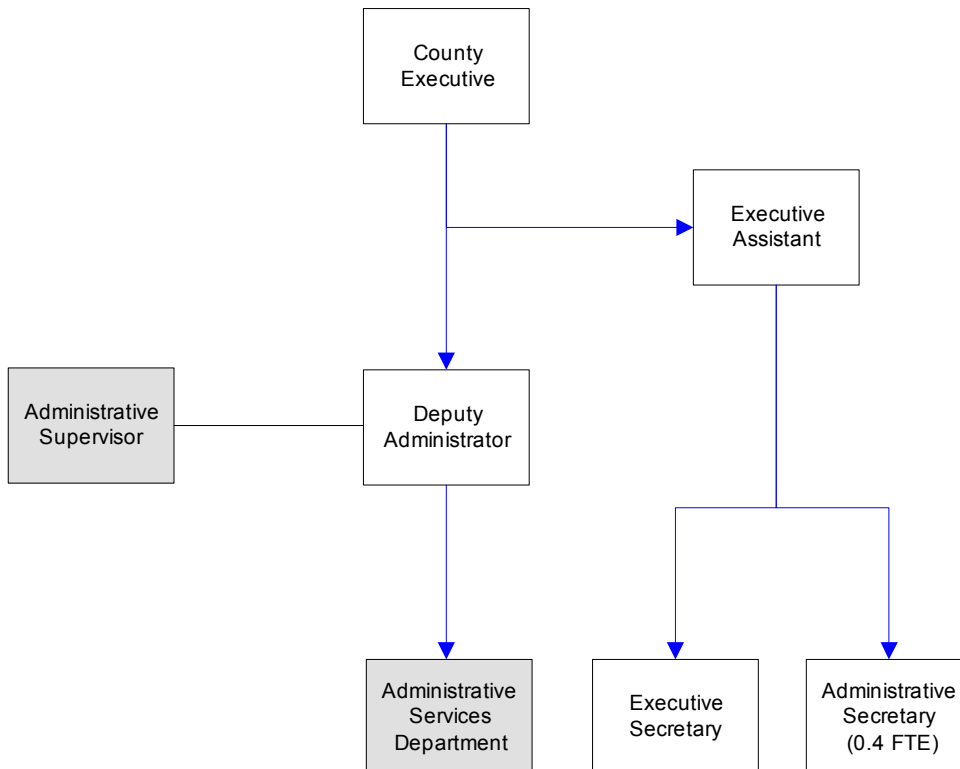
County Executive's Office

An elected official, the County Executive manages the day-to-day functions of administrative departments. The Executive is responsible for quarterly and annual revenue estimation and tracking, recommends the county's annual budget to the County Council, and monitors all departments' expenditures to ensure budget compliance. The Executive appoints members to boards and commissions, responds to citizen concerns, complaints and requests, and represents the county at local, regional, state and federal levels. The Executive is also responsible for managing all "non-departmental" services that the county provides.

FTE's for this department

| Year | 2005 | 2006 | 2007 | *2008 | *2009 | *2010 | *budget |
|------|------|------|------|-------|-------|-------|---------|
| FTE | 4.50 | 4.50 | 4.50 | 4.50 | 4.40 | 4.40 | |

The chart below shows the organizational structure for 2009 only.



Mission & Objectives

Mission

Coordinate and provide for effective, efficient and responsive service to protect the public trust and promote the well being of the citizens of Whatcom County.

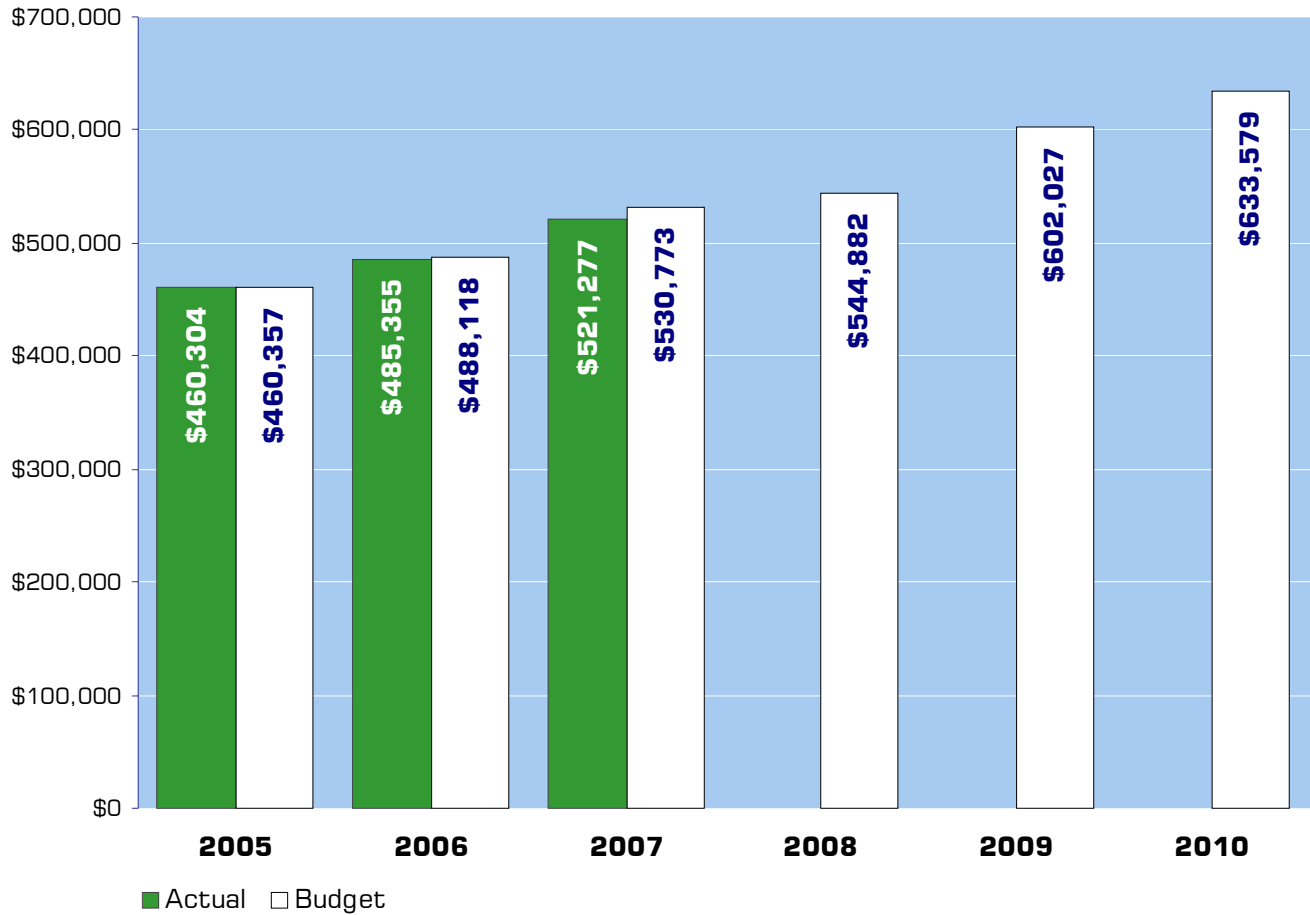
Objectives

- Maintain a balanced budget while sustaining services that meet the expectations of Whatcom County citizens.
- Work with county departments to find creative solutions to decrease expenditures, promote efficiencies and strengthen revenues.
- Meet with department heads and County Council to prioritize projects and planning for county services.
- Set up opportunities for citizens to meet individually or as a group with County Executive to share their concerns.
- Meet at least once a month with department heads and elected officials to share information and develop enhanced teamwork.

Non-Departmental

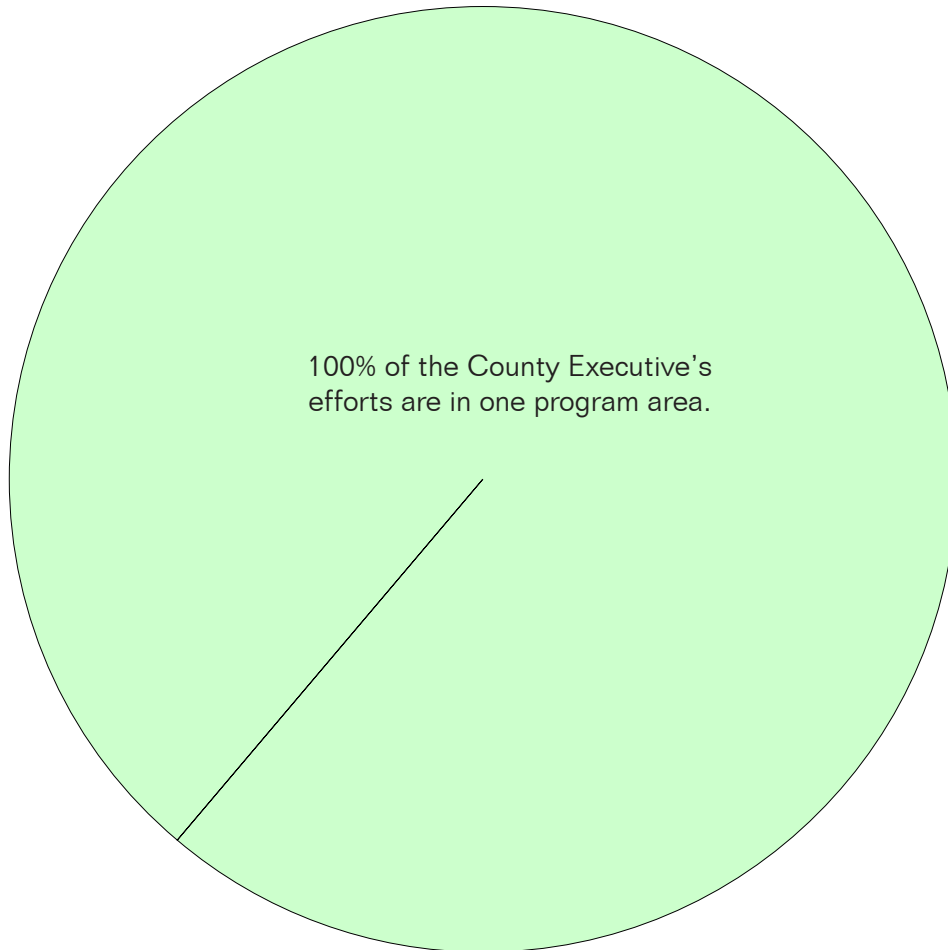
- Purchase the Central Plaza Building which houses the Public Defenders' Offices.
- Purchase housing for Pt Roberts resident deputies.
- Implement a jail re-integration project for incarcerated veterans.
- Implement a personal financial responsibility and budget training program for veterans with chronic financial problems.
- Provide food distribution services to county food banks through contract with the Bellingham Food Bank.
- Provide help to county businesses during the 2009 economic downturn through contract with WWU's Small Business Development Council.

Expenditure Trends



NOTE: Capital expenditures and interfund operating transfers are not shown to more accurately reflect ongoing operational costs.

2009-2010 Budget by Program



NOTE: Capital expenditures and interfund operating and residual equity transfers are not shown to more accurately reflect ongoing operational costs.

Program Summary

| Actual 2005 | Actual 2006 | Actual 2007 | Budget 2008 | Budget 2009 | Budget 2010 |
|----------------|----------------|----------------|----------------|----------------|----------------|
|----------------|----------------|----------------|----------------|----------------|----------------|

OPERATIONS

General Fund

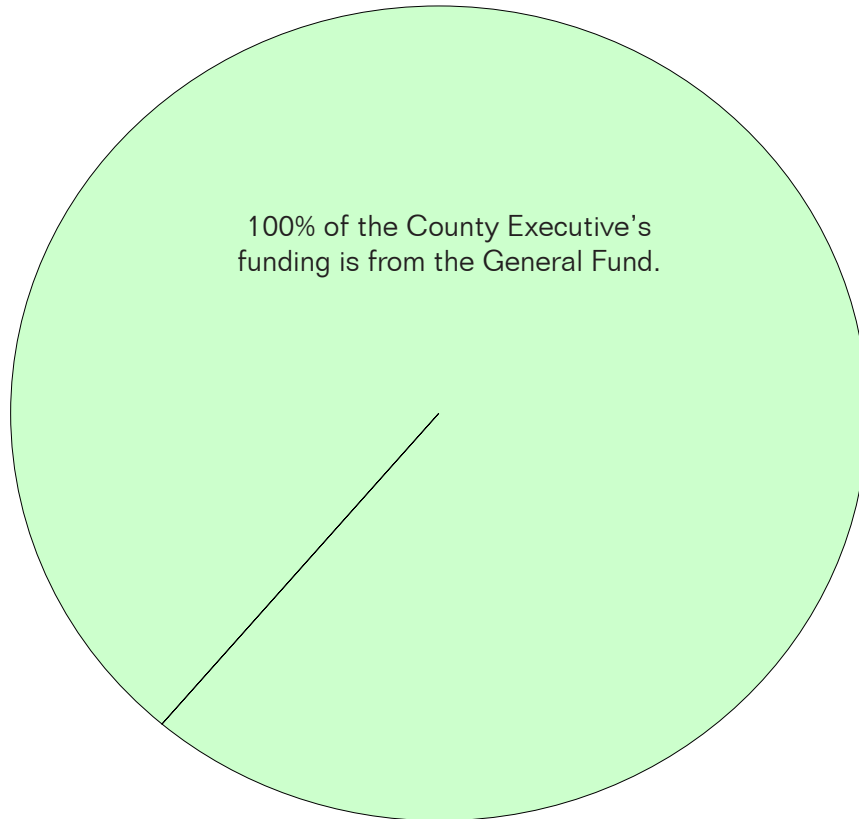
| | | | | | | |
|--|---------|---------|---------|---------|---------|---------|
| 1200 County Executive | 460,304 | 485,355 | 521,277 | 544,882 | 602,027 | 633,579 |
| <i>Total Executive Operations</i> | 460,304 | 485,355 | 521,277 | 544,882 | 602,027 | 633,579 |
| TOTAL COUNTY EXECUTIVE | 460,304 | 485,355 | 521,277 | 544,882 | 602,027 | 633,579 |
| <i>Percent Change from Previous Year</i> | 11.3% | 5.4% | 7.4% | 4.5% | 10.5% | 5.2% |

2009-2010 Funding Sources

| | 2009 | 2010 |
|---------------|-------------|-------------|
| General Fund | 602,027 | 633,579 |
| Total Funding | 602,027 | 633,579 |

General Fund

Undedicated General Fund resources.



Expenditures Summary

| | Actual 2005 | Actual 2006 | Actual 2007 | Budget 2008 | Budget 2009 | Budget 2010 |
|--|----------------|----------------|----------------|----------------|----------------|----------------|
| GENERAL FUND | | | | | | |
| 1200 County Executive | | | | | | |
| Salaries & Wages | 319,927 | 333,521 | 348,083 | 346,793 | 383,656 | 406,425 |
| Benefits | 77,473 | 83,190 | 94,934 | 107,012 | 117,452 | 123,155 |
| Supplies | 5,485 | 5,870 | 5,763 | 8,400 | 6,200 | 6,200 |
| Other Services & Charges | 57,419 | 62,774 | 72,497 | 82,677 | 94,719 | 97,799 |
| <i>TOTAL COUNTY EXECUTIVE</i> | 460,304 | 485,355 | 521,277 | 544,882 | 602,027 | 633,579 |
| <i>Percent Change from Previous Year</i> | 11.3% | 5.4% | 7.4% | 4.5% | 10.5% | 5.2% |

Services

Administration of County Departments

Administration and supervision of county departments.

Budget Administration

Oversee development of biennial budgets for all county operations.

County Contracts & Agreements

Coordination of county contracts and agreements.

Customer Service/Office Support

Provide customer service and office support.

Executive Support Services

Provide support for the Executive.

Financial Administration

Provide administration and oversight of financial matters.

Personnel Administration

Oversee county personnel administration.

Public Service

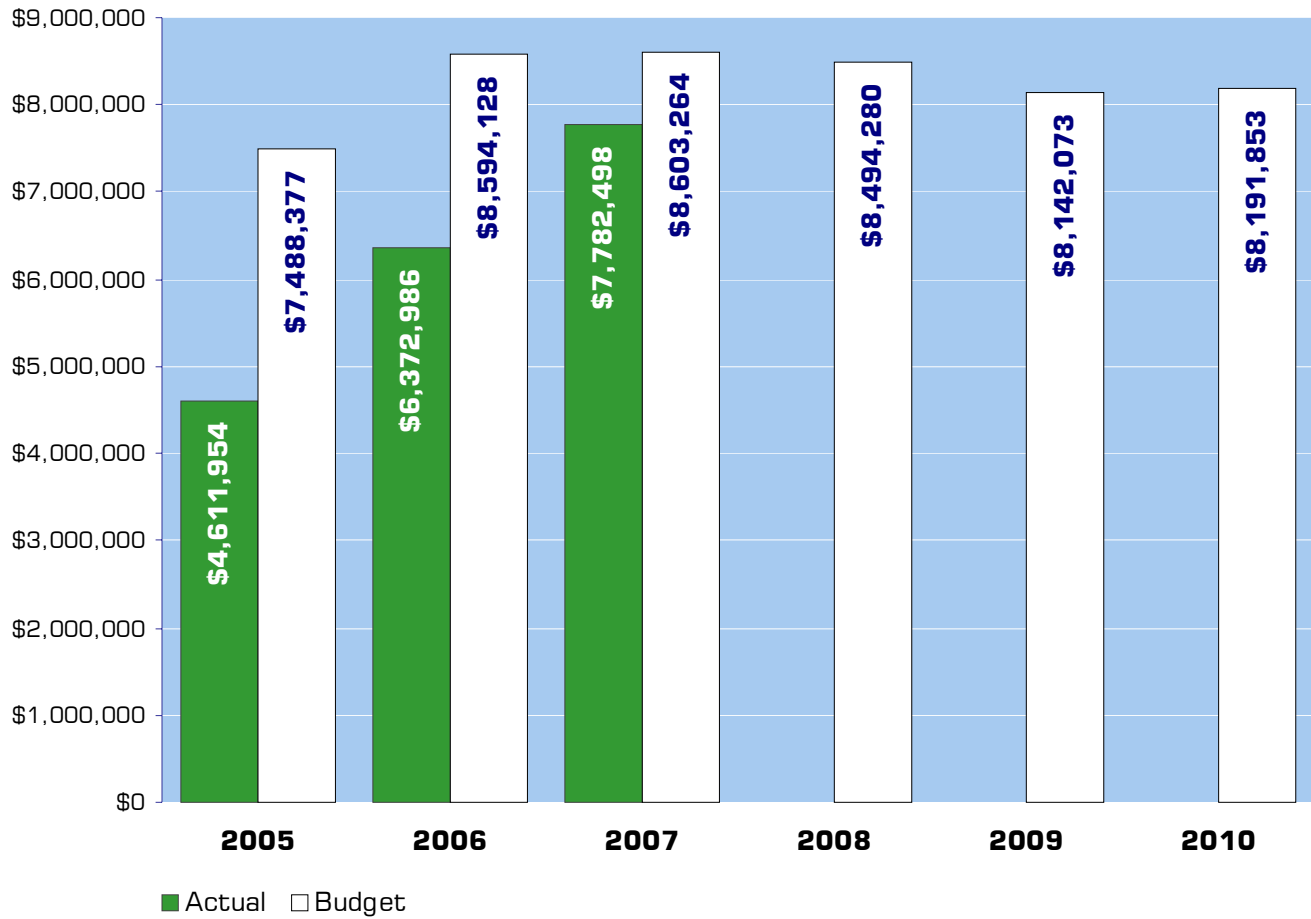
Provide direct service to the public.

Non-Departmental

“Non-Departmental” expenditures are administered by the County Executive’s Office. These expenditures include costs that are not attributable to specific program areas or departments.

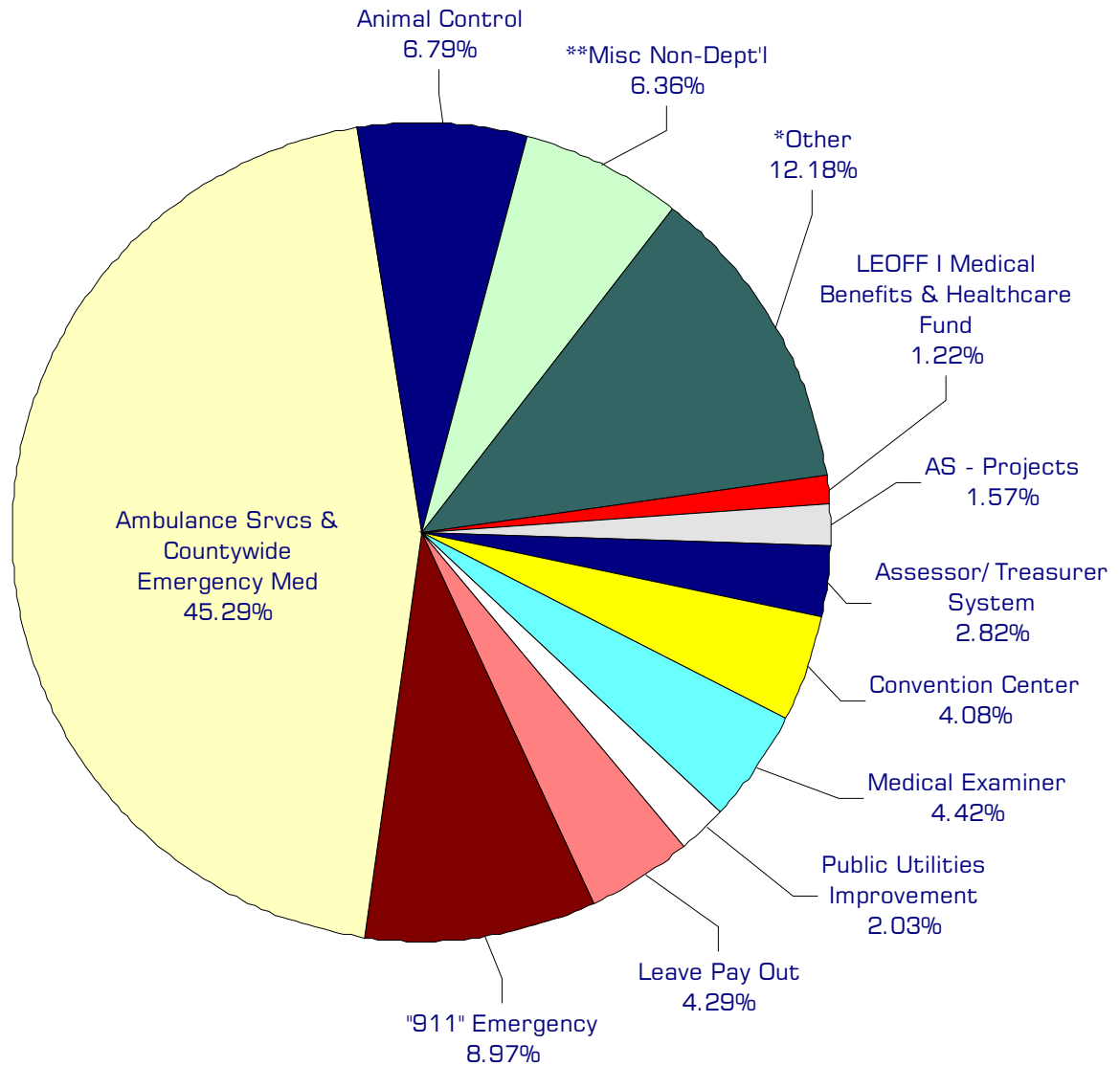
There are no FTE’s in Non-Departmental.

Expenditure Trends



NOTES: Capital expenditures and interfund operating transfers are not shown to more accurately reflect ongoing operational costs.

2009-2010 Budget by Program



Note: Capital expenditures & interfund operating transfers are not shown to more accurately reflect ongoing operational costs.

**"Other" comprises funding for: Indigent Burial, County Morgue, Historical Document Preservation, Small Potatoes Gleaning Project, Food Bank, Green Building & Resource Conservation, Natural Resource Conservation / Commuter Incentives, Employee Recognition, Association Dues, Horticultural Inspection, LEOFF Board, Domestic Violence Commission, Music and Art, Northwest Regional Council, Friendly Visitors, Air Pollution Control, Volunteer Support, Council of Governments, Lake Whatcom Watershed Land Acquisition, Boundary Review, Green Power, and Conservation Futures.*

***Miscellaneous Non-Departmental comprises funds set aside for wage settlements, non-departmental's share of the administrative cost allocation, and other miscellaneous expenses.*

Program Summary

| | Actual 2005 | Actual 2006 | Actual 2007 | Budget 2008 | Budget 2009 | Budget 2010 |
|------------------------------------|----------------|----------------|----------------|----------------|----------------|----------------|
| OPERATIONS | | | | | | |
| General Fund | | | | | | |
| 2100 Medical Examiner | 313,392 | 294,943 | 309,047 | 315,430 | 355,350 | 366,010 |
| 2945 LEOFF I Medical Benefits | 176,389 | 381,168 | 256,146 | 235,948 | 100,000 | 100,000 |
| 4017 Law & Justice Strategic Plan | 9,525 | 15,040 | 17,816 | 10,000 | - | - |
| 4019 Historical Document Preservat | - | - | 13,000 | 8,000 | 8,000 | 8,000 |
| 4022 Water Resources | - | - | - | - | - | - |
| 4024 Assessor/ Treasurer System | - | - | - | - | 100,000 | 360,000 |
| 4025 Indigent Burial | 11,242 | 15,257 | 11,664 | 18,000 | 18,000 | 18,000 |
| 4035 County Morgue | 42,762 | 47,138 | 44,466 | 45,571 | 46,025 | 46,914 |
| 4036 Fed. & State Representation | - | - | 39,396 | 58,729 | - | - |
| 4038 Green Power | - | - | 49,774 | 62,000 | 40,000 | 40,000 |
| 4040 Strategic Planning | - | - | - | 4,000 | - | - |
| 4050 Domestic Violence Commissior | 59,500 | 61,319 | 64,997 | 65,000 | 45,000 | 45,000 |
| 4055 Starling Program | 7,500 | 14,861 | 5,798 | 24,202 | - | - |
| 4060 Public Health/ Home Health | 10,000 | 10,000 | 10,000 | 10,000 | - | - |
| 4070 Annual State Audit | 102,288 | 107,939 | - | - | - | - |
| 4075 Leave Pay Out | 281,456 | 135,665 | 82,993 | 360,000 | 350,000 | 350,000 |
| 4085 Employee Recognition | 1,737 | 1,816 | 1,798 | 3,000 | 3,000 | 3,000 |
| 4090 Association Dues | 58,216 | 62,809 | 66,882 | 70,700 | 71,848 | 74,612 |
| 4100 Criminal Justice Data Integr | - | - | - | 30,000 | - | - |
| 4105 Sister County Project | - | - | - | 5,000 | - | - |
| 4115 Water Conservancy Board | 2,651 | 328 | 399 | 500 | - | - |
| 4116 Food Bank | - | - | - | - | 50,000 | 50,000 |
| 4117 Sm. Potatoes Gleaning Project | - | - | 6,432 | 8,568 | 7,206 | 8,066 |
| 4130 Horticultural Inspection | 10,271 | 10,355 | 10,230 | 10,440 | 10,440 | 10,440 |
| 4135 Pest Control | - | - | - | 6,000 | - | - |
| 4140 Economic Development | 30,000 | 20,000 | 113,000 | 93,000 | - | - |
| 4145 Maintenance Mgmt Phase I | - | 30,120 | 4,716 | - | - | - |
| 4150 Courthouse Safety | 45,738 | 152,102 | - | - | - | - |
| 4155 Green Bldg & Rsrc Conserv | 9,300 | 29,941 | 34,985 | 35,000 | 20,000 | 20,000 |
| 4160 LEOFF Board | 275 | 194 | 305 | 2,300 | 500 | 500 |
| 4165 Rapid Border Prosecution | 750 | 39,000 | 39,250 | 38,225 | - | - |
| 4240 Northwest Regional Council | 74,902 | 79,027 | 81,977 | 84,100 | 97,856 | 100,200 |
| 4250 Emerg Communication-911 | 664,188 | 637,330 | 750,044 | 787,385 | 717,878 | 746,593 |
| 4265 CDBG Grant Birch Bay Sewer | 414,423 | 435,577 | - | - | - | - |
| 4266 CDBG Grant Opportunity Co. | - | 374,109 | 126,337 | - | - | - |
| 4270 Ambulance Services | 1,322,970 | 1,336,200 | 1,349,562 | 1,363,057 | 1,376,688 | 1,390,454 |
| 4271 EMS Council | 2,978 | 1,044 | 463 | 4,516 | - | - |
| 4290 Air Pollution Control | 27,229 | 27,561 | 27,947 | 28,500 | 28,808 | 28,808 |
| 4300 Animal Control | 334,815 | 358,167 | 550,236 | 617,373 | 569,165 | 539,714 |
| 4440 Volunteer Support | 35,000 | 35,000 | 38,000 | 38,000 | 35,000 | 35,000 |

continued on next page

Program Summary continued

| | Actual 2005 | Actual 2006 | Actual 2007 | Budget 2008 | Budget 2009 | Budget 2010 |
|--|------------------|------------------|------------------|------------------|------------------|------------------|
| 4450 Council of Governements | 53,781 | 75,753 | 77,813 | 81,000 | 75,594 | 77,873 |
| 4455 Readiness to Learn | 5,000 | 10,000 | 10,000 | 10,000 | - | - |
| 4456 Music & Art | 17,000 | 17,000 | 19,000 | 19,000 | 15,000 | 15,000 |
| 4460 Natural Resource Conservator | - | - | - | - | 9,000 | - |
| 4465 Watershed Restoration | - | 40,000 | - | - | - | - |
| 4475 Feasibility Study | 34,033 | - | - | - | - | - |
| 4510 Sean Humphrey House | - | - | 12,000 | 12,000 | - | - |
| 4515 Homeless Shelter/Lydia Place | 10,000 | 10,000 | 12,500 | 12,500 | - | - |
| 4520 Boundary Review | 13,168 | 16,801 | 22,225 | 18,491 | 18,000 | 18,000 |
| 4525 Friendly Visitors | - | 6,250 | 20,000 | 20,000 | 20,000 | 20,000 |
| 4530 Transfers to Other Funds | - | - | 2,435 | 14,469 | - | - |
| 4531 AS Facilities Projects | - | - | - | - | - | 7,000 |
| 4532 AS IT Projects | - | - | - | - | 75,000 | 75,000 |
| 4533 AS Finance Projects | - | - | - | - | 100,000 | - |
| 4540 Capital Acquisitions-Lake What | - | 5,800 | 4,420 | 1,700 | 300,000 | - |
| 4900 Misc Non-Departmental | 200,866 | 206,883 | 286,096 | 1,724,388 | 515,006 | 523,346 |
| 130 County Wide Emerg Medical | - | - | 1,042,212 | 1,731,177 | 2,233,786 | 2,396,736 |
| 137 LEOFF I Healthcare Fund | - | - | - | - | 200,000 | 200,000 |
| 141 WC Convention Center | 160,295 | 161,328 | 200,003 | 220,660 | 328,980 | 336,980 |
| 175 Conservation Futures Fund | 3,500 | 2,225 | 25,000 | 25,000 | 25,000 | 25,000 |
| 332 Public Utilities Imprv Fund | 64,814 | 1,106,936 | 1,958,984 | 161,351 | 175,943 | 155,607 |
| <i>Total Non-Dept'l Operations</i> | 4,611,954 | 6,372,986 | 7,800,348 | 8,494,280 | 8,142,073 | 8,191,853 |
| CAPITAL | | | | | | |
| General Fund | | | | | | |
| 4024 Assessor/ Treasurer System | - | - | - | - | - | 2,500,000 |
| 4145 Maintenance Mgmt Phase I | - | 57,073 | 28,536 | 190,338 | - | - |
| 4531 AS Facilities Projects | - | - | - | - | 97,000 | - |
| 4532 AS IT Projects | - | - | - | - | 131,000 | 148,700 |
| 4533 AS Finance Projects | - | - | - | - | 20,000 | 34,000 |
| 4540 Capital Acquistions | - | 597,051 | - | - | 3,000,000 | - |
| 4900 Misc Non-Departmental | - | - | 11,486 | - | - | - |
| 175 Conservation Futures Fund | 1,680,017 | 1,153,335 | 2,187,250 | 1,675,000 | 861,996 | 884,198 |
| 332 Public Utilities Imprv Fund | 528,586 | 159 | - | - | - | - |
| <i>Total Non-Dept'l Capital</i> | 2,208,603 | 1,807,618 | 2,227,272 | 1,865,338 | 4,109,996 | 3,566,898 |

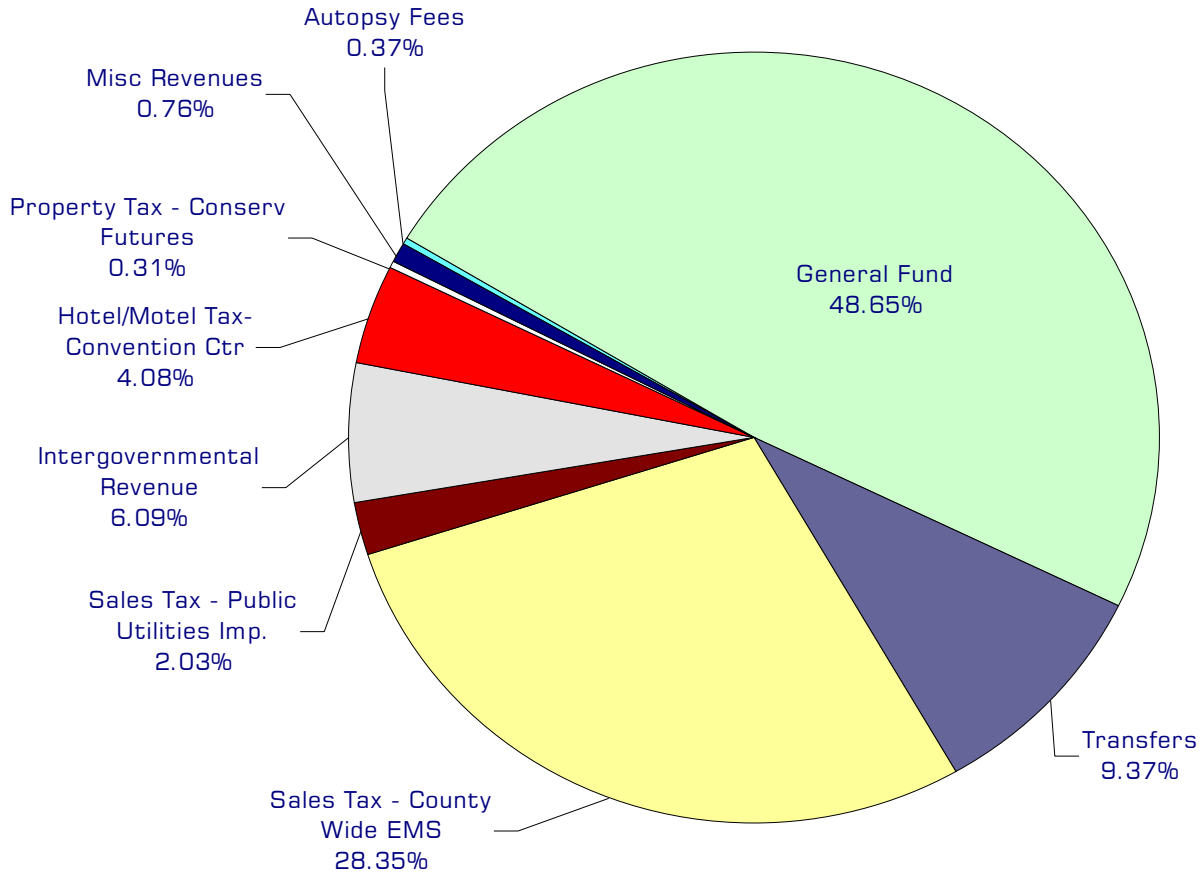
continued on next page

Program Summary continued

| | Actual 2005 | Actual 2006 | Actual 2007 | Budget 2008 | Budget 2009 | Budget 2010 |
|--|----------------|----------------|----------------|----------------|----------------|----------------|
| TRANSFERS | | | | | | |
| General Fund | | | | | | |
| 2945 LEOFF Medical | - | - | 3,500,000 | - | - | - |
| 4022 Water Resources | - | 100,000 | - | - | 23,500 | 24,500 |
| 4023 Laserfiche Project - PB | - | - | 30,439 | 185,082 | - | - |
| 4120 Civil Service Commission | 18,423 | 15,076 | 25,965 | 26,524 | 24,231 | 25,624 |
| 4145 Maintenance Mgmt Phase I | - | 15,500 | 31,137 | - | - | - |
| 4150 Courthouse Safety | 57,892 | 100,212 | - | - | - | - |
| 4165 Rapid Border Prosecution | - | 15,392 | 158,826 | 129,400 | 140,763 | 150,971 |
| 4490 Marine Resources Support | - | 155,000 | - | - | - | - |
| 4530 Transfers to Other Funds | 1,628,602 | 7,882,466 | 8,687,244 | 10,141,584 | 6,698,035 | 6,974,587 |
| 4900 Misc Non-Departmental | - | - | - | - | 155,000 | - |
| 130 Co. Wide Emergency Medical | - | 90,337 | 336,687 | 658,740 | 658,740 | 658,740 |
| 135 WC Trial Court Improvement | - | 15,679 | 35,234 | 26,922 | 39,088 | 27,235 |
| 151 Community Development | 5,000 | 5,000 | 5,000 | 5,000 | 5,000 | 5,000 |
| 175 Conservation Futures Fund | - | - | - | - | 136,780 | 136,780 |
| 332 Public Utilities Imprv Fund | 2,762,947 | - | - | - | - | - |
| 503 Whatcom County Supplement: | - | - | - | - | - | 203,193 |
| <i>Total Non-Dept'l Transfers</i> | 4,472,864 | 8,394,662 | 12,810,532 | 11,173,252 | 7,881,137 | 8,206,630 |
| TOTAL NON-DEPARTMENTAL | 11,293,421 | 16,575,266 | 22,838,152 | 21,532,870 | 20,133,206 | 19,965,381 |
| <i>Percent change from previous year</i> | 73.3% | 46.8% | 37.8% | -5.7% | -6.5% | -0.8% |

2009-2010 Funding Sources

| | 2009 | 2010 |
|-----------------------------------|------------------|------------------|
| Autopsy Fees | 30,000 | 30,000 |
| General Fund | 3,976,087 | 3,971,073 |
| Transfers | 820,544 | 710,657 |
| Sales Tax - County Wide EMS | 2,233,786 | 2,396,736 |
| Sales Tax - Public Utilities Imp. | 175,943 | 155,607 |
| Intergovernmental Revenue | 493,933 | 500,000 |
| Hotel/Motel Tax-Convention Ctr | 328,980 | 336,980 |
| Property Tax - Conserv Futures | 25,000 | 25,000 |
| Misc Revenues | 57,800 | 65,800 |
| Total Funding | 8,142,073 | 8,191,853 |



2009-2010 Funding Sources continued

Autopsy Fees

Pursuant to RCW 68.50.104, the county is partially reimbursed by the state for the costs of performing autopsies.

General Fund

Undedicated General Fund resources.

Sales Tax - Countywide Emergency Medical Services

Pursuant to RCW 82.14.450 the county is authorized to collect .1% additional sales tax. The money is dedicated two-thirds to emergency medical services and one-third to criminal justice. The chart does not include funding for transfers.

Sales Tax - Public Utilities Improvement Fund

Pursuant to RCW 82.14.370, the county is authorized to collect .09 percent additional sales tax, which is credited against the state's 6.5% portion. The money is dedicated to public facilities. The chart does not include funding for capital expenditures and loans.

Intergovernmental Revenues

The Federal Government has awarded Whatcom County grant monies to fund the Rapid Border Prosecution project. These funds pay the wages and benefits of 6.5 positions related to criminal justice.

Hotel/Motel Tax - Convention Center

Pursuant to RCW 67.28.210, the county levies an excise tax on hotel, motel or other lodging sales. The revenue collected from this tax is used for the operation of the Bellingham/Whatcom County Visitor/Convention Center, the Mount Baker Foothills Visitor Center, and various other activities that promote tourism in Whatcom County.

Property Tax - Conservation Futures

A tax imposed pursuant to RCW 84.34.230, levied at six and one quarter cents per \$1,000 of assessed valuation of real property within Whatcom County. Money collected for the Conservation Futures Fund is used solely to acquire rights and interest in open space land, farm and agricultural land and timber land. The chart does not include funds dedicated to capital expenditures.

Miscellaneous Revenues

Small amounts of miscellaneous unclassified revenues.

Expenditures Summary

| | Actual 2005 | Actual 2006 | Actual 2007 | Budget 2008 | Budget 2009 | Budget 2010 |
|--|----------------|----------------|------------------|----------------|----------------|------------------|
| GENERAL FUND | | | | | | |
| 2100 Medical Examiner | | | | | | |
| Supplies | 11,267 | 7,047 | - | 5,000 | - | - |
| Other Services & Charges | 302,125 | 287,896 | 309,047 | 310,430 | 355,350 | 366,010 |
| <i>Total Medical Examiner</i> | <i>313,392</i> | <i>294,943</i> | <i>309,047</i> | <i>315,430</i> | <i>355,350</i> | <i>366,010</i> |
| 2945 Leoff I Medical Benefits | | | | | | |
| Benefits | 157,100 | 366,948 | 236,007 | 223,318 | 100,000 | 100,000 |
| Other Services & Charges | 19,289 | 14,220 | 20,139 | 12,630 | - | - |
| Residual Equity Transfer | - | - | 3,500,000 | - | - | - |
| <i>Total LEOFF I Medical Benefits</i> | <i>176,389</i> | <i>381,168</i> | <i>3,756,146</i> | <i>235,948</i> | <i>100,000</i> | <i>100,000</i> |
| 4017 Law & Justice Support | | | | | | |
| Other Services & Charges | 9,525 | 15,040 | 17,816 | 10,000 | - | - |
| <i>Total Law/Justice Support</i> | <i>9,525</i> | <i>15,040</i> | <i>17,816</i> | <i>10,000</i> | <i>-</i> | <i>-</i> |
| 4019 Historical Document Preservation | | | | | | |
| Other Services & Charges | - | - | 13,000 | 8,000 | 8,000 | 8,000 |
| <i>Total Historical Doc Preservation</i> | <i>-</i> | <i>-</i> | <i>13,000</i> | <i>8,000</i> | <i>8,000</i> | <i>8,000</i> |
| 4022 Water Resources | | | | | | |
| Other Services & Charges | - | - | - | - | - | - |
| Operating Transfer Out | - | 100,000 | - | - | 23,500 | 24,500 |
| <i>Total Water Resources</i> | <i>-</i> | <i>100,000</i> | <i>-</i> | <i>-</i> | <i>23,500</i> | <i>24,500</i> |
| 4023 Laserfiche Project - PB | | | | | | |
| Operating Transfer Out | - | - | 30,439 | 185,082 | - | - |
| <i>Total Laserfiche Project - PB</i> | <i>-</i> | <i>-</i> | <i>30,439</i> | <i>185,082</i> | <i>-</i> | <i>-</i> |
| 4024 Assessor/ Treasurer System | | | | | | |
| Salary & Wages | - | - | - | - | 67,885 | 229,784 |
| Benefits | - | - | - | - | 17,143 | 49,074 |
| Supplies | - | - | - | - | 13,000 | 9,000 |
| Other Services & Charges | - | - | - | - | 1,972 | 72,142 |
| Capital Outlay | - | - | - | - | - | 2,500,000 |
| <i>Total Assessor/ Treasurer System</i> | <i>-</i> | <i>-</i> | <i>-</i> | <i>-</i> | <i>100,000</i> | <i>2,860,000</i> |
| 4025 Indigent Burial | | | | | | |
| Other Services & Charges | 11,242 | 15,257 | 11,664 | 18,000 | 18,000 | 18,000 |
| <i>Total Indigent Burial</i> | <i>11,242</i> | <i>15,257</i> | <i>11,664</i> | <i>18,000</i> | <i>18,000</i> | <i>18,000</i> |
| 4035 County Morgue | | | | | | |
| Other Services & Charges | 42,762 | 47,138 | 44,466 | 45,571 | 46,025 | 46,914 |
| <i>Total County Morgue</i> | <i>42,762</i> | <i>47,138</i> | <i>44,466</i> | <i>45,571</i> | <i>46,025</i> | <i>46,914</i> |
| 4036 Federal & State Representation | | | | | | |
| Other Services & Charges | - | - | 39,396 | 58,729 | - | - |
| <i>Total Federal & State Rep.</i> | <i>-</i> | <i>-</i> | <i>39,396</i> | <i>58,729</i> | <i>-</i> | <i>-</i> |
| 4038 Green Power | | | | | | |
| Other Services & Charges | - | - | 49,774 | 62,000 | 40,000 | 40,000 |
| <i>Total Green Power</i> | <i>-</i> | <i>-</i> | <i>49,774</i> | <i>62,000</i> | <i>40,000</i> | <i>40,000</i> |

continued on next page

Expenditures Summary continued

| | Actual 2005 | Actual 2006 | Actual 2007 | Budget 2008 | Budget 2009 | Budget 2010 |
|--|----------------|----------------|----------------|----------------|----------------|----------------|
| 4040 Strategic Planning | | | | | | |
| Other Services & Charges | - | - | - | 4,000 | - | - |
| <i>Total Strategic Planning</i> | - | - | - | 4,000 | - | - |
| 4050 Domestic Violence Commission | | | | | | |
| Other Services & Charges | 59,500 | 61,319 | 64,997 | 65,000 | 45,000 | 45,000 |
| <i>Total Domestic Violence Comm.</i> | 59,500 | 61,319 | 64,997 | 65,000 | 45,000 | 45,000 |
| 4055 Starling Program | | | | | | |
| Other Services & Charges | 7,500 | 14,861 | 5,798 | 24,202 | - | - |
| <i>Total Starling Program</i> | 7,500 | 14,861 | 5,798 | 24,202 | - | - |
| 4060 Public Health/ Home Health | | | | | | |
| Intergov Services & Charge | 10,000 | 10,000 | 10,000 | 10,000 | - | - |
| <i>Total Public/Home Health</i> | 10,000 | 10,000 | 10,000 | 10,000 | - | - |
| 4070 Annual State Audit* | | | | | | |
| Intergov Services & Charge | 102,288 | 107,939 | - | - | - | - |
| <i>Total Annual State Audit</i> | 102,288 | 107,939 | - | - | - | - |
| 4075 Leave Pay Out | | | | | | |
| Salaries & Wages | 276,169 | 134,293 | 79,864 | 360,000 | 350,000 | 350,000 |
| Benefits | 5,287 | 1,372 | 3,129 | - | - | - |
| <i>Total Leave Pay Out</i> | 281,456 | 135,665 | 82,993 | 360,000 | 350,000 | 350,000 |
| 4085 Employee Recognition | | | | | | |
| Supplies | 1,737 | 1,816 | 1,798 | 3,000 | 3,000 | 3,000 |
| <i>Total Employee Recognition</i> | 1,737 | 1,816 | 1,798 | 3,000 | 3,000 | 3,000 |
| 4090 Association Dues | | | | | | |
| Other Services & Charges | 58,216 | 62,809 | 66,882 | 70,700 | 71,848 | 74,612 |
| <i>Total Association Dues</i> | 58,216 | 62,809 | 66,882 | 70,700 | 71,848 | 74,612 |
| 4100 Criminal Justice Data Integr. | | | | | | |
| Other Services & Charges | - | - | - | 30,000 | - | - |
| <i>Total Crim Justice Date Integr</i> | - | - | - | 30,000 | - | - |
| 4105 Sister County Project | | | | | | |
| Other Services & Charges | - | - | - | 5,000 | - | - |
| <i>Total Sister County Project</i> | - | - | - | 5,000 | - | - |
| 4115 Water Conservancy Board | | | | | | |
| Other Services & Charges | 2,651 | 328 | 399 | 500 | - | - |
| <i>Total Water Conservancy Board</i> | 2,651 | 328 | 399 | 500 | - | - |
| 4116 Food Bank | | | | | | |
| Other Services & Charges | - | - | - | - | 50,000 | 50,000 |
| <i>Total Water Conservancy Board</i> | - | - | - | - | 50,000 | 50,000 |
| 4117 Small Potatoes Gleaning Project | | | | | | |
| Other Services & Charges | - | - | 6,432 | 8,568 | 7,206 | 8,066 |
| <i>Total Small Potatoes Gleaning Proj.</i> | - | - | 6,432 | 8,568 | 7,206 | 8,066 |

continued on next page

Expenditures Summary continued

| | Actual 2005 | Actual 2006 | Actual 2007 | Budget 2008 | Budget 2009 | Budget 2010 |
|---|----------------|----------------|----------------|----------------|----------------|----------------|
| 4120 Civil Service Commission | | | | | | |
| Operating Transfers | 18,423 | 15,076 | 25,965 | 26,524 | 24,231 | 25,624 |
| <i>Total Civil Service Commission</i> | 18,423 | 15,076 | 25,965 | 26,524 | 24,231 | 25,624 |
| 4130 Horticultural Inspection | | | | | | |
| Other Services & Charges | 10,271 | 10,355 | 10,230 | 10,440 | 10,440 | 10,440 |
| <i>Total Horticultural Inspection</i> | 10,271 | 10,355 | 10,230 | 10,440 | 10,440 | 10,440 |
| 4135 Pest Control | | | | | | |
| Other Services & Charges | - | - | - | 6,000 | - | - |
| <i>Total Pest Control</i> | - | - | - | 6,000 | - | - |
| 4140 Economic Development | | | | | | |
| Other Services & Charges | 30,000 | 20,000 | 113,000 | 93,000 | - | - |
| <i>Total Economic Development</i> | 30,000 | 20,000 | 113,000 | 93,000 | - | - |
| 4145 Maintenance Mgmt Phase I | | | | | | |
| Other Services | - | 30,120 | 4,716 | - | - | - |
| Capital Outlay | - | 57,073 | 28,536 | 190,338 | - | - |
| Operating Transfers | - | 15,500 | 31,137 | - | - | - |
| <i>Total Maintenance Mgmt Phase I</i> | - | 102,693 | 64,389 | 190,338 | - | - |
| 4150 Courthouse Safety* | | | | | | |
| Supplies | 3,871 | - | - | - | - | - |
| Other Services & Charges | 41,867 | 152,102 | - | - | - | - |
| Operating Transfers | 57,892 | 100,212 | - | - | - | - |
| <i>Total Courthouse Safety</i> | 103,630 | 252,314 | - | - | - | - |
| 4155 Green Building & Natural Resource Conservation | | | | | | |
| Other Services & Charges | 9,300 | 29,941 | 34,985 | 35,000 | 20,000 | 20,000 |
| <i>Total Green Bldg & Nat Resource Cc</i> | 9,300 | 29,941 | 34,985 | 35,000 | 20,000 | 20,000 |
| 4160 LEOFF Board | | | | | | |
| Supplies | 130 | - | - | 825 | - | - |
| Other Services & Charges | 145 | 194 | 305 | 1,475 | 500 | 500 |
| <i>Total LEOFF Board</i> | 275 | 194 | 305 | 2,300 | 500 | 500 |
| 4165/4166/4167 Rapid Border Prosecution | | | | | | |
| Other Services | 750 | 39,000 | 39,250 | 38,225 | - | - |
| Operating Transfers | - | 15,392 | 158,826 | 129,400 | 140,763 | 150,971 |
| <i>Total Rapid Border Prosecution</i> | 750 | 54,392 | 198,076 | 167,625 | 140,763 | 150,971 |
| 4240 Northwest Regional Council | | | | | | |
| Intergov Services & Charge | 74,902 | 79,027 | 81,977 | 84,100 | 97,856 | 100,200 |
| <i>Total NW Regional Council</i> | 74,902 | 79,027 | 81,977 | 84,100 | 97,856 | 100,200 |
| 4250 Emergency Communication - 911 | | | | | | |
| Intergov Services & Charge | 664,188 | 637,330 | 750,044 | 787,385 | 717,878 | 746,593 |
| <i>Total Emerg Communication</i> | 664,188 | 637,330 | 750,044 | 787,385 | 717,878 | 746,593 |

*Annual State Audit and Courthouse Safety now accounted for in Administrative Services Fund.

continued on next page

Expenditures Summary continued

| | Actual 2005 | Actual 2006 | Actual 2007 | Budget 2008 | Budget 2009 | Budget 2010 |
|--|----------------|----------------|----------------|----------------|----------------|----------------|
| 4265 CDBG Grant - Birch Bay Sewer | | | | | | |
| Intergov Services & Charge | 414,423 | 435,577 | - | - | - | - |
| <i>Total CDBG Grnt - Birch Bay Sewer</i> | 414,423 | 435,577 | - | - | - | - |
| 4266 CDBG Grant - Opportunity Council | | | | | | |
| Other Services & Charge | - | 374,109 | 126,337 | - | - | - |
| <i>Total CDBG Grnt-Opp. Council</i> | - | 374,109 | 126,337 | - | - | - |
| 4270 Ambulance Services | | | | | | |
| Intergov Services & Charge | 1,322,970 | 1,336,200 | 1,349,562 | 1,363,057 | 1,376,688 | 1,390,454 |
| <i>Total Ambulance Services</i> | 1,322,970 | 1,336,200 | 1,349,562 | 1,363,057 | 1,376,688 | 1,390,454 |
| 4271 EMS Council | | | | | | |
| Intergov Services & Charge | 2,978 | 1,044 | 463 | 4,516 | - | - |
| <i>Total EMS Council</i> | 2,978 | 1,044 | 463 | 4,516 | - | - |
| 4290 Air Pollution Control | | | | | | |
| Intergov Services & Charge | 27,229 | 27,561 | 27,947 | 28,500 | 28,808 | 28,808 |
| <i>Total Air Pollution Control</i> | 27,229 | 27,561 | 27,947 | 28,500 | 28,808 | 28,808 |
| 4300 Animal Control | | | | | | |
| Other Services & Charges | 334,815 | 358,167 | 550,236 | 617,373 | 569,165 | 539,714 |
| <i>Total Animal Control</i> | 334,815 | 358,167 | 550,236 | 617,373 | 569,165 | 539,714 |
| 4440 Volunteer Support | | | | | | |
| Other Services & Charges | 35,000 | 35,000 | 38,000 | 38,000 | 35,000 | 35,000 |
| <i>Total Volunteer Support</i> | 35,000 | 35,000 | 38,000 | 38,000 | 35,000 | 35,000 |
| 4450 Council of Governments | | | | | | |
| Intergov Services & Charge | 53,781 | 75,753 | 77,813 | 81,000 | 75,594 | 77,873 |
| <i>Total Council of Governments</i> | 53,781 | 75,753 | 77,813 | 81,000 | 75,594 | 77,873 |
| 4455 Readiness to Learn | | | | | | |
| Other Services & Charges | 5,000 | 10,000 | 10,000 | 10,000 | - | - |
| <i>Total Readiness to Learn</i> | 5,000 | 10,000 | 10,000 | 10,000 | - | - |
| 4456 Music & Art | | | | | | |
| Other Services & Charges | 17,000 | 17,000 | 19,000 | 19,000 | 15,000 | 15,000 |
| <i>Total Music & Art</i> | 17,000 | 17,000 | 19,000 | 19,000 | 15,000 | 15,000 |
| 4460 Natural Resource Conservation/Commuter Incentives | | | | | | |
| Intergov Services & Charge | - | - | - | - | 9,000 | - |
| <i>Total Natural Resource Conservator</i> | - | - | - | - | 9,000 | - |
| 4465 Watershed Restoration | | | | | | |
| Other Services & Charges | - | 40,000 | - | - | - | - |
| <i>Total Watershed Restoration</i> | - | 40,000 | - | - | - | - |
| 4475 Feasibility Study | | | | | | |
| Other Services & Charges | 34,033 | - | - | - | - | - |
| <i>Total Feasibility Study</i> | 34,033 | - | - | - | - | - |
| 4490 Marine Resources Support | | | | | | |
| Operating Transfer Out | - | 155,000 | - | - | - | - |
| <i>Total Marine Resources Support</i> | - | 155,000 | - | - | - | - |

continued on next page

Expenditures Summary continued

| | Actual 2005 | Actual 2006 | Actual 2007 | Budget 2008 | Budget 2009 | Budget 2010 |
|--|------------------|-------------------|-------------------|-------------------|-------------------|-------------------|
| 4510 Sean Humphrey House | | | | | | |
| Other Services & Charges | - | - | 12,000 | 12,000 | - | - |
| <i>Total Sean Humphrey House</i> | - | - | 12,000 | 12,000 | - | - |
| 4515 Homeless Shelter/Lydia Place | | | | | | |
| Other Services & Charges | 10,000 | 10,000 | 12,500 | 12,500 | - | - |
| <i>Total Homeless Shelter/Lydia Pl</i> | 10,000 | 10,000 | 12,500 | 12,500 | - | - |
| 4520 Boundary Review Board | | | | | | |
| Other Services & Charges | 13,168 | 16,801 | 22,225 | 18,491 | 18,000 | 18,000 |
| <i>Total Boundary Review Board</i> | 13,168 | 16,801 | 22,225 | 18,491 | 18,000 | 18,000 |
| 4525 Friendly Visitor Program | | | | | | |
| Other Services & Charges | - | 6,250 | 20,000 | 20,000 | 20,000 | 20,000 |
| <i>Total Friendly Visitor Program</i> | - | 6,250 | 20,000 | 20,000 | 20,000 | 20,000 |
| 4530 Transfer to Other Funds | | | | | | |
| Other Services & Charges | - | - | 2,435 | 14,469 | - | - |
| Operating Transfers | 1,628,602 | 7,882,466 | 8,687,244 | 10,141,584 | 6,698,035 | 6,974,587 |
| <i>Total Transfer to Other Funds</i> | 1,628,602 | 7,882,466 | 8,689,679 | 10,156,053 | 6,698,035 | 6,974,587 |
| 4531 AS Facilities Projects | | | | | | |
| Other Services & Charges | - | - | - | - | - | 7,000 |
| Capital Outlay | - | - | - | - | 97,000 | - |
| <i>Total AS Facilities Projects</i> | - | - | - | - | 97,000 | 7,000 |
| 4532 AS IT Projects | | | | | | |
| Other Services & Charges | - | - | - | - | 75,000 | 75,000 |
| Capital Outlay | - | - | - | - | 131,000 | 148,700 |
| <i>Total AS IT Projects</i> | - | - | - | - | 206,000 | 223,700 |
| 4533 AS Finance Projects | | | | | | |
| Other Services & Charges | - | - | - | - | 100,000 | - |
| Capital Outlay | - | - | - | - | 20,000 | 34,000 |
| <i>Total AS Finance Projects</i> | - | - | - | - | 120,000 | 34,000 |
| 4540 Capital Acquisitions | | | | | | |
| Other Services & Charges | - | 5,800 | 4,420 | 1,700 | - | - |
| Intergov Services & Charge | - | - | - | - | 300,000 | - |
| Capital Outlay | - | 597,051 | - | - | 3,000,000 | - |
| <i>Total Capital Acquisitions</i> | - | 602,851 | 4,420 | 1,700 | 3,300,000 | - |
| 4900 Miscellaneous Non-Departmental | | | | | | |
| Salary & Wages | - | - | - | 1,470,934 | 200,000 | 200,000 |
| Supplies | 1,688 | - | 454 | - | - | - |
| Other Services & Charges | 199,178 | 206,883 | 285,642 | 253,454 | 315,006 | 323,346 |
| Capital Outlay | - | - | 11,486 | - | - | - |
| Operating Transfers | - | - | - | - | 155,000 | - |
| <i>Total Misc. Non-Departmental</i> | 200,866 | 206,883 | 297,582 | 1,724,388 | 670,006 | 523,346 |
| TOTAL GENERAL FUND | 6,088,262 | 14,040,267 | 17,047,782 | 17,029,020 | 15,467,893 | 14,935,912 |
| <i>Percent Change From Previous Year</i> | <i>23.7%</i> | <i>130.6%</i> | <i>21.4%</i> | <i>-0.1%</i> | <i>-9.2%</i> | <i>-3.4%</i> |

continued on next page

Expenditures Summary continued

| | Actual 2005 | Actual 2006 | Actual 2007 | Budget 2008 | Budget 2009 | Budget 2010 |
|---|----------------|----------------|----------------|----------------|----------------|----------------|
| 130 COUNTYWIDE EMERGENCY MEDICAL | | | | | | |
| Intergov. Services & Charges | - | - | 1,042,212 | 1,731,177 | 2,233,786 | 2,396,736 |
| Operating Transfers | - | 90,337 | 336,687 | 658,740 | 658,740 | 658,740 |
| <i>Total County Wide Emergency Medica</i> | - | 90,337 | 1,378,899 | 2,389,917 | 2,892,526 | 3,055,476 |
| <i>Percent Change From Previous Year</i> | 0.0% | 0.0% | 1426.4% | 73.3% | 21.0% | 5.6% |
| 135 WC TRIAL COURT IMPROVEMENT | | | | | | |
| Operating Transfers | - | 15,679 | 35,234 | 26,922 | 39,088 | 27,235 |
| <i>Total WC Trial Court Improvement</i> | - | 15,679 | 35,234 | 26,922 | 39,088 | 27,235 |
| <i>Percent Change From Previous Year</i> | 0.0% | 0.0% | 124.7% | -23.6% | 45.2% | -30.3% |
| 137 LEOFF I HEALTHCARE FUND | | | | | | |
| Benefits | - | - | - | - | 200,000 | 200,000 |
| <i>Total LEOFF I HEALTHCARE FUND</i> | - | - | - | - | 200,000 | 200,000 |
| <i>Percent Change From Previous Year</i> | 0.0% | 0.0% | 0.0% | 0.0% | 0.0% | 0.0% |
| 141 WC CONVENTION CENTER FUND | | | | | | |
| Supplies | 725 | 654 | 5,564 | 1,000 | 1,000 | 7,000 |
| Other Services & Charges | 159,570 | 160,674 | 194,439 | 219,660 | 327,980 | 329,980 |
| <i>Total Convention Center</i> | 160,295 | 161,328 | 200,003 | 220,660 | 328,980 | 336,980 |
| <i>Percent Change From Previous Year</i> | 17.6% | 0.6% | 24.0% | 10.3% | 49.1% | 2.4% |
| 151 COMMUNITY DEVELOPMENT FUND | | | | | | |
| Operating Transfers | 5,000 | 5,000 | 5,000 | 5,000 | 5,000 | 5,000 |
| <i>Total Community Develop Fund</i> | 5,000 | 5,000 | 5,000 | 5,000 | 5,000 | 5,000 |
| <i>Percent Change From Previous Year</i> | 0.0% | 0.0% | 0.0% | 0.0% | 0.0% | 0.0% |
| 175 CONSERVATIONS FUTURE FUND | | | | | | |
| Other Services & Charges | 3,500 | 2,225 | 25,000 | 25,000 | 25,000 | 25,000 |
| Capital Outlay | 1,680,017 | 1,153,335 | 2,187,250 | 1,675,000 | 861,996 | 884,198 |
| Operating Transfers | - | - | - | - | 136,780 | 136,780 |
| <i>Total Conservation Futures Fund</i> | 1,683,517 | 1,155,560 | 2,212,250 | 1,700,000 | 1,023,776 | 1,045,978 |
| <i>Percent Change From Previous Year</i> | 65.2% | -31.4% | 91.4% | -23.2% | -39.8% | 2.2% |
| 332 PUBLIC UTILITIES IMPRV FUND | | | | | | |
| Salaries & Wages | 25,232 | 61,799 | 51,059 | 87,993 | 88,606 | 94,555 |
| Benefits | 8,239 | 18,052 | 14,185 | 32,625 | 31,537 | 36,052 |
| Supplies | 1,033 | - | - | - | - | - |
| Other Services & Charges | 30,310 | 256,354 | 51,952 | 40,733 | 55,800 | 25,000 |
| Intergovernmental | - | 770,731 | 1,841,788 | - | - | - |
| Capital Outlay | 528,586 | 159 | - | - | - | - |
| Operating Transfer | 2,762,947 | - | - | - | - | - |
| <i>Total Public Utilities Imprv Fund</i> | 3,356,347 | 1,107,095 | 1,958,984 | 161,351 | 175,943 | 155,607 |
| <i>Percent Change From Previous Year</i> | 670.0% | -67.0% | 76.9% | -91.8% | 9.0% | -11.6% |

Expenditures Summary continued

| | Actual 2005 | Actual 2006 | Actual 2007 | Budget 2008 | Budget 2009 | Budget 2010 |
|--|----------------|----------------|----------------|----------------|----------------|----------------|
| 503 WHATCOM COUNTY SUPPLEMENTAL RETIREMENT FUND | | | | | | |
| Residual Equity Transfer | - | - | - | - | - | 203,193 |
| <i>Total WC Suppl Retirement Fund</i> | - | - | - | - | - | 203,193 |
| <i>Percent Change from Previous Year</i> | 0.0% | 0.0% | 0.0% | 0.0% | 0.0% | 0.0% |
| TOTAL NON-DEPARTMENTAL | 11,293,421 | 16,575,266 | 22,838,152 | 21,532,870 | 20,133,206 | 19,965,381 |
| <i>Percent Change From Previous Year</i> | 73.3% | 46.8% | 37.8% | -5.7% | -6.5% | -0.8% |

Services

Administrative Services Projects

Projects funded by the General Fund. Includes various courthouse facilities projects, information technology infrastructure upgrades and development of a GIS regional lands database. Also includes timekeeping software and finance system software upgrade.

Air Pollution Control

The Northwest Air Pollution Authority is responsible for prevention, abatement and control of air pollution within its jurisdiction. RCW 70.94 authorizes the authority to levy assessments on a per capita basis on all jurisdictions within its boundaries.

Ambulance Services

Whatcom County contracts with the City of Bellingham to provide ambulance services to the residents of unincorporated Whatcom County.

Animal Control

Animal housing and control services, and enforcement of related ordinances is provided by contract for unincorporated areas of Whatcom County.

Assessor/Treasurer System (ATS)

The Assessor-Treasurer System (ATS) replacement project's goal is to maintain the existing capabilities while modernizing and improving the assessment, treasury, and GIS services to the people of Whatcom County.

Association Dues

Dues paid to participate in government associations, i.e., WSAC, WACO, CEA and NACO.

Boundary Review Board

All corporate boundary changes such as incorporations, annexations or extension of services proposed by cities or special purpose districts are reviewed by the Board which considers the effects of such actions on area residents.

Capital Acquisitions – Central Plaza Building

Costs associated with the lease buyout of the building at 215 N. Commercial which houses the Public Defender's offices.

Capital Acquisitions - Lake Whatcom Watershed Land Acquisition, Transfer and Exchange

Costs associated with Lake Whatcom Watershed land acquisition, transfer and exchange.

Capital Acquisitions – Third Floor Civic Center

Costs associated with renovating the third floor of the Civic Center at 322 N. Commercial for future Public Works use.

Services continued

Civil Service Commission

Pursuant to RCW 41.14, the commission is required to oversee the administration of the civil service for the Sheriff's Office. The county must pay for the services provided by the Civil Service Commission.

Council of Governments

The Whatcom County Council of Governments is an intergovernmental agency supported by the jurisdictions it includes. It was formed to coordinate planning and community development within the county.

County Morgue

The county pays for the lease, utilities, and operating supplies for the morgue, for use by the medical examiner to perform autopsy services.

Domestic Violence Commission

Develop and implement a coordinated comprehensive domestic violence plan, increase community awareness, and serve as an advisory board.

Emergency Communication - 911

A county-wide emergency communication system is operated by the City of Bellingham with the support of all jurisdictions within the county. The county pays proportionately for the services provided to residents of the unincorporated area.

Employee Recognition

Provide for annual employee recognition event.

Food Bank

Provide funding for local food banks to distribute food to indigent citizens.

Friendly Visitor Program

The goal of this program is to reduce loneliness and isolation experienced by seniors, improve their quality of life and help them live as independently as possible. This program is administered by Northwest Regional Council.

Green Building & Resource Conservation

Provides support for green building and smart growth resource creation.

Green Power

County Council requested support for Puget Sound Energy's Green Power program.

Historical Document Preservation

In accordance with RCW 36.22.170, promote historical preservation or historical programs, which may include preservation of historical documents.

Services continued

Horticulture Inspection

The county contracts with the State Department of Agriculture for horticulture inspection services in support of the agriculture industry in Whatcom County.

Indigent Burial

Provide payment of burial costs for people who die without resources to cover this expense.

Leave Pay Out

Provide fund bank for leave pay out (sick leave and vacation) for retiring employees.

LEOFF Board

RCW 41.26.110 requires a board to act on all claims for disability to be paid by the Law Enforcement Officers' and Fire Fighters' (LEOFF I) retirement system plan.

LEOFF 1 Medical

RCW 41.25.150 requires counties to provide complete medical benefits for members (active and retired) of the Law Enforcement Officers and Firefighters (LEOFF 1) retirement system plan. Beginning in 2009, most benefits will be paid out of a newly established LEOFF I Healthcare Fund.

Medical Examiner

Contract for services to provide medical examiner services to the county.

Misc Non-Departmental

Provides wage reserves for contract settlements, Executive Contingency Fund for emergency funding at discretion of County Executive, Search and Rescue Council recognition, and covers the administrative cost allocation related to non-departmental and district activities.

Music & Art - Mt. Baker Theatre

Provide funding to Mt. Baker Theatre to support educational program for youth outreach arts program.

Music & Art - Whatcom Symphony Orchestra

Whatcom County contracts with the Whatcom Symphony Orchestra to enhance the cultural and artistic life of our community, and offer people of all ages and economic backgrounds the opportunity to experience live symphonic music.

Natural Resource Conservation/Commuter Incentive Program

A commuter incentive program designed to help reduce single occupancy vehicle trips in Whatcom County in effort to reduce air pollution, congestion and greenhouse gases.

Northwest Regional Council

Northwest Regional Council (NWRC) is an intergovernmental agency which provides certain specific law enforcement-related support regionwide (i.e. radio repeater sites, etc.), and services for the aging. Costs are shared by 4 counties. Also includes support for the Senior Nutrition Program.

Services continued

Rapid Border Prosecution

Funding received from the federal government designed for international border impacts on Whatcom County criminal justice system.

Small Potatoes Gleaning Project

Provides resources to gather excess food from farms and gardens for distribution to local food banks.

Transfers to Other Funds

Provides funding for elections support, bond payments, weed control positions in the Road Fund, emergency management services, replacement of computer equipment in departments, partial support for various Administrative Services positions, and the General Fund portion of jail operations support.

Volunteer Support

Whatcom Volunteer Center provides volunteer services to a number of county departments as well as community non-profits, schools, other government and healthcare-related worksites.

Water Resources

Support for Bertrand Creek stream gauging project.

