

District Court

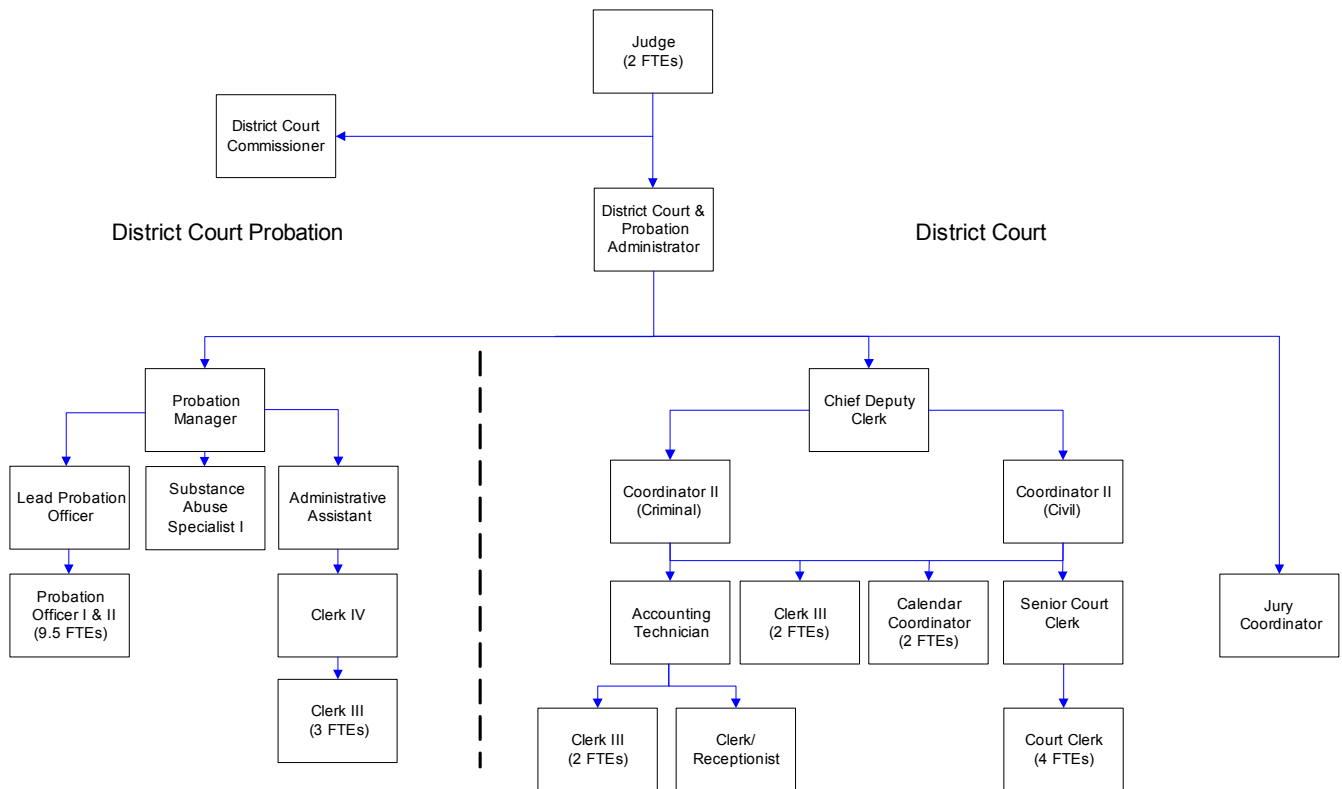
With two elected judges and one appointed commissioner, District Court processes Sheriff, State Patrol, some City of Bellingham, Department of Fisheries, State Park, and Western Washington University traffic citations. It also handles small claims, civil claims, name changes and protection orders (as referred by Superior Court).

FTE's for this department

Year	2005	2006	2007	*2008	*2009	*2010
FTE	18.00	19.00	21.00	21.00	20.00	20.00

**budget*

The chart below shows the organizational structure for 2009 only.



Mission & Objectives

Mission

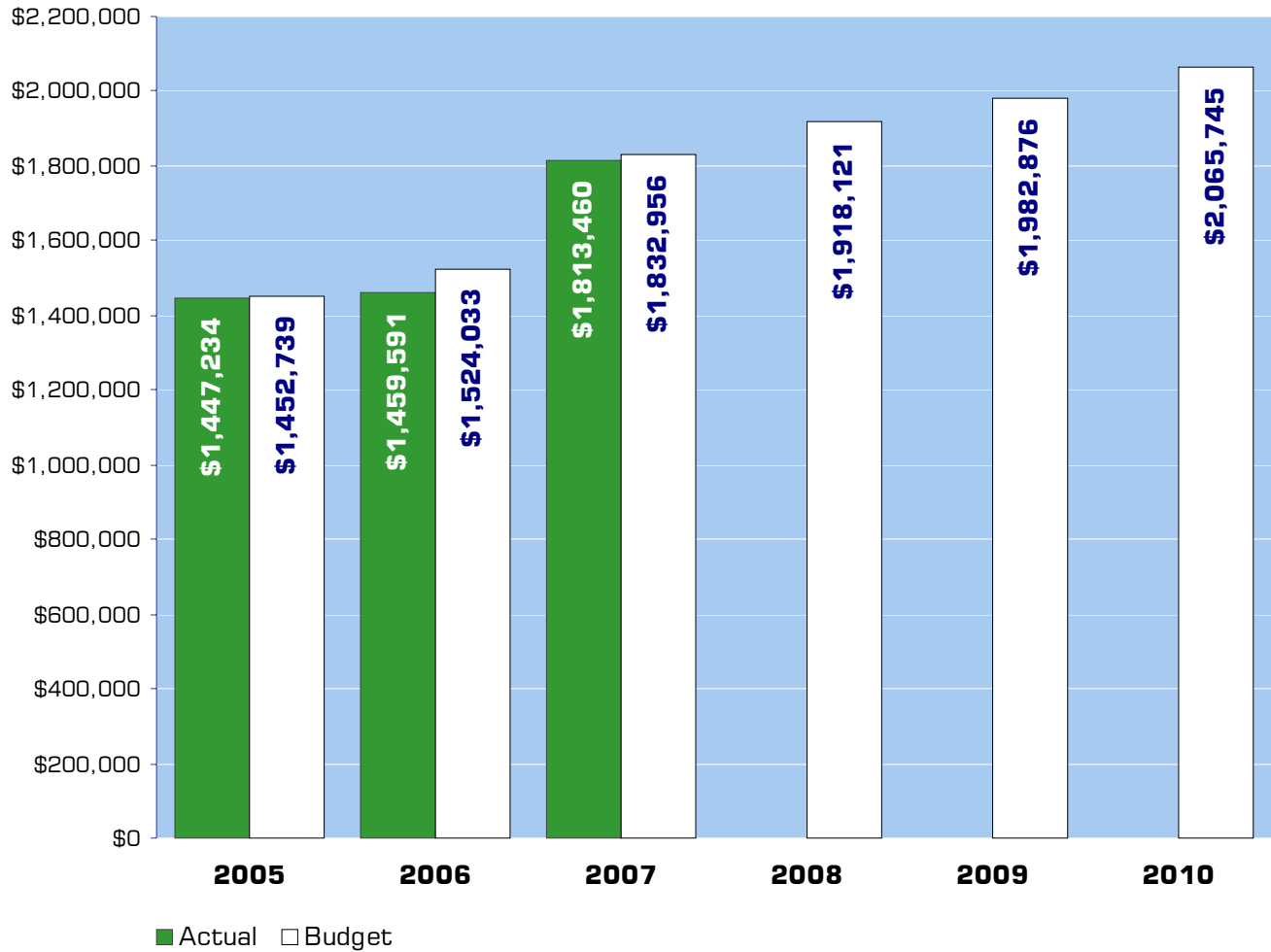
As an independent and impartial branch of government, District Court will promote respect for law, society and individual rights; provide open, accessible and effective forums for dispute resolution and resolve legal matters in a just, efficient and timely manner.

Additionally, District Court has jurisdiction over civil matters in which the amount in controversy does not exceed \$50,000. Small Claims Court, which is a subsection of District Court, has jurisdiction concurrent with the District Court over civil matters in which the controversy is \$4,000 or less. Traffic and non-traffic infraction cases, domestic violence and anti-harassment orders for protection are also heard in District Court. Collect all fines and fees assessed by the court.

Objectives

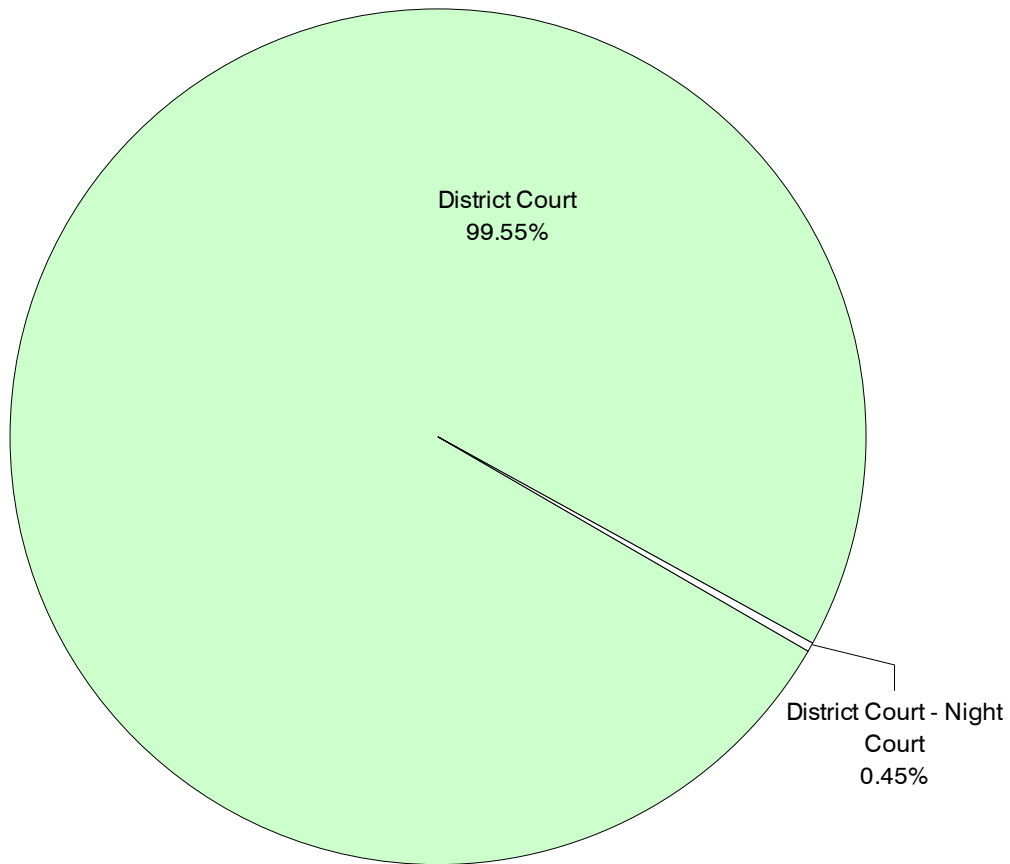
- Implement Eticket Program in coordination with the Washington State Patrol.
- Implement On-Line Mitigation Program.
- Implement new Jury Software Program.
- Implement Parking Case Management Program.
- Complete local law table updates and post them on the website.
- Purchase and install new jury system software and related hardware for summoning juries.

Expenditure Trends



NOTE: Capital expenditures and interfund operating transfers are not shown to more accurately reflect ongoing operational costs.

2009-2010 Budget by Program



NOTE: Capital expenditures are not shown to more accurately reflect ongoing operational costs.

Program Summary

Actual 2005	Actual 2006	Actual 2007	Budget 2008	Budget 2009	Budget 2010
----------------	----------------	----------------	----------------	----------------	----------------

OPERATIONS

General Fund

1300 District Court	1,447,234	1,458,010	1,804,425	1,910,038	1,974,658	2,057,510
1305 District Court - Night Court	-	1,581	9,035	8,083	8,218	8,235
<i>Total District Court Operations</i>	1,447,234	1,459,591	1,813,460	1,918,121	1,982,876	2,065,745

CAPITAL

General Fund

1300 District Court	-	-	-	144,659	37,523	-
<i>Total District Court Capital</i>	-	-	-	144,659	37,523	-
TOTAL DISTRICT COURT	1,447,234	1,459,591	1,813,460	2,062,780	2,020,399	2,065,745
<i>Percent change from previous year</i>	10.2%	0.9%	24.2%	13.7%	-2.1%	2.2%

2009-2010 Funding Sources

	2009	2010
Service Charges & Fees	168,995	168,995
General Fund	1,770,963	1,853,815
Miscellaneous Revenue	42,918	42,935
Total Funding	1,982,876	2,065,745

Service Charges & Fees

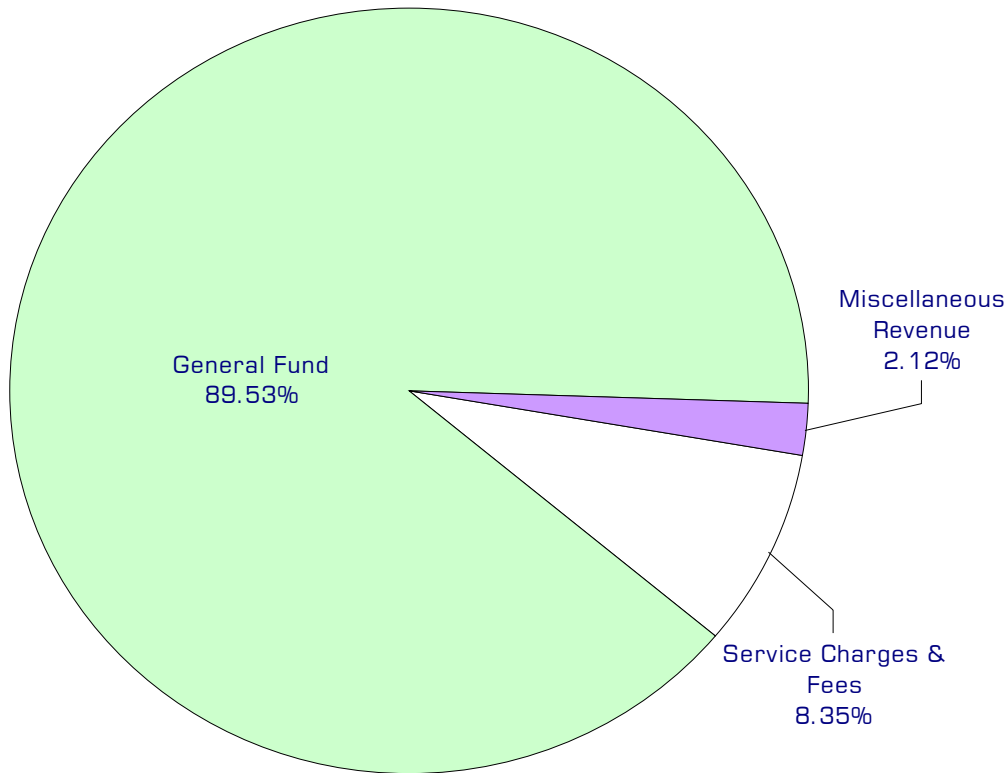
District Court charges for transcripts, warrants, filing and various other services. Judicial fines and forfeits are not included as District Court revenue.

General Fund

Undedicated General Fund resources.

Miscellaneous Revenue

Interest income, transfer from Trial Court Improvement Fund to fund Night Court and other small amounts of revenue not otherwise classified.



Performance / Activity Measures

	Actual 2005	Actual 2006	Actual 2007	Projected 2008	Projected 2009	Projected 2010
Infractions	18,393	19,837	21,062	24,700	25,700	27,400
DUI	996	956	1,032	1,100	1,125	1,150
Other Criminal Traffic	1,025	2,375	2,714	3,000	3,100	3,200
Criminal	1,600	1,461	1,618	1,500	1,500	1,700
Civil	4,211	3,913	4,114	3,900	4,100	4,300

Expenditures Summary

	Actual 2005	Actual 2006	Actual 2007	Budget 2008	Budget 2009	Budget 2010
GENERAL FUND						
1300 District Court						
Salaries & Wages	931,827	910,442	1,013,574	1,049,786	1,103,844	1,148,972
Benefits	238,109	265,987	338,414	419,272	425,654	455,138
Supplies	40,812	45,661	63,564	27,365	34,813	34,813
Other Services & Charges	236,486	235,920	388,873	413,615	410,347	418,587
Capital Outlay	-	-	-	144,659	37,523	-
<i>Total District Court</i>	1,447,234	1,458,010	1,804,425	2,054,697	2,012,181	2,057,510
<i>Percent Change from Previous Year</i>	10.2%	0.7%	23.8%	13.9%	-2.1%	2.3%
1301/1305 STOP Grant/Night Court						
Salaries & Wages	-	1,443	1,706	4,400	4,400	4,400
Benefits	-	138	281	683	818	835
Other Services & Charges	-	-	7,048	3,000	3,000	3,000
<i>Total District Court - Night Court</i>	-	1,581	9,035	8,083	8,218	8,235
<i>Percent Change from Previous Year</i>	0.0%	0.0%	471.5%	-10.5%	1.7%	0.2%
TOTAL DISTRICT COURT	1,447,234	1,459,591	1,813,460	2,062,780	2,020,399	2,065,745
<i>Percent Change from Previous Year</i>	10.2%	0.9%	24.2%	13.7%	-2.1%	2.2%

Services

Criminal & gross misdemeanor (DUI, Criminal Traffic)

Processing criminal misdemeanor and gross misdemeanor cases filed in District Court.

District Court Civil Cases

Processing civil and small claims cases filed in District Court.

District Court Infractions

Processing infraction citations filed in District Court.



District Court Probation

This department provides adult probation services for offenders charged with misdemeanors in the District Court and some municipal courts that contract with the county. This office does not supervise offenders convicted of felonies in the Superior Court (these are handled by the state probation office).

FTE's for this department

Year	2005	2006	2007	*2008	*2009	*2010
FTE	19.00	20.00	19.50	19.50	18.50	18.50

**budget*

See District Court section for organization chart.

Mission & Objectives

Mission

Make Whatcom County a safer place by holding offenders accountable through the provision of timely monitoring, professional guidance and stern enforcement of judicial orders.

Objectives

Alcohol/Drug Unit

- Complete accurate alcohol/drug assessment and refer clients to treatment services that are appropriate for their needs. Supervisor will analyze "Requests for Change in Level of Service" forms submitted by treatment. Success will be based on a less than 10% request for change in level of service.
- Work with the Department of Alcohol and Substance Abuse to complete state audit requirements. This includes updating all policies and procedures comply with recently revised WAC 388-805 requirements.
- Provide timely alcohol/drug assessments for the court, attorneys and probation services. Upon proof of payment, 90% of all assessment appointments will be scheduled within 4 weeks.

Domestic Violence Unit

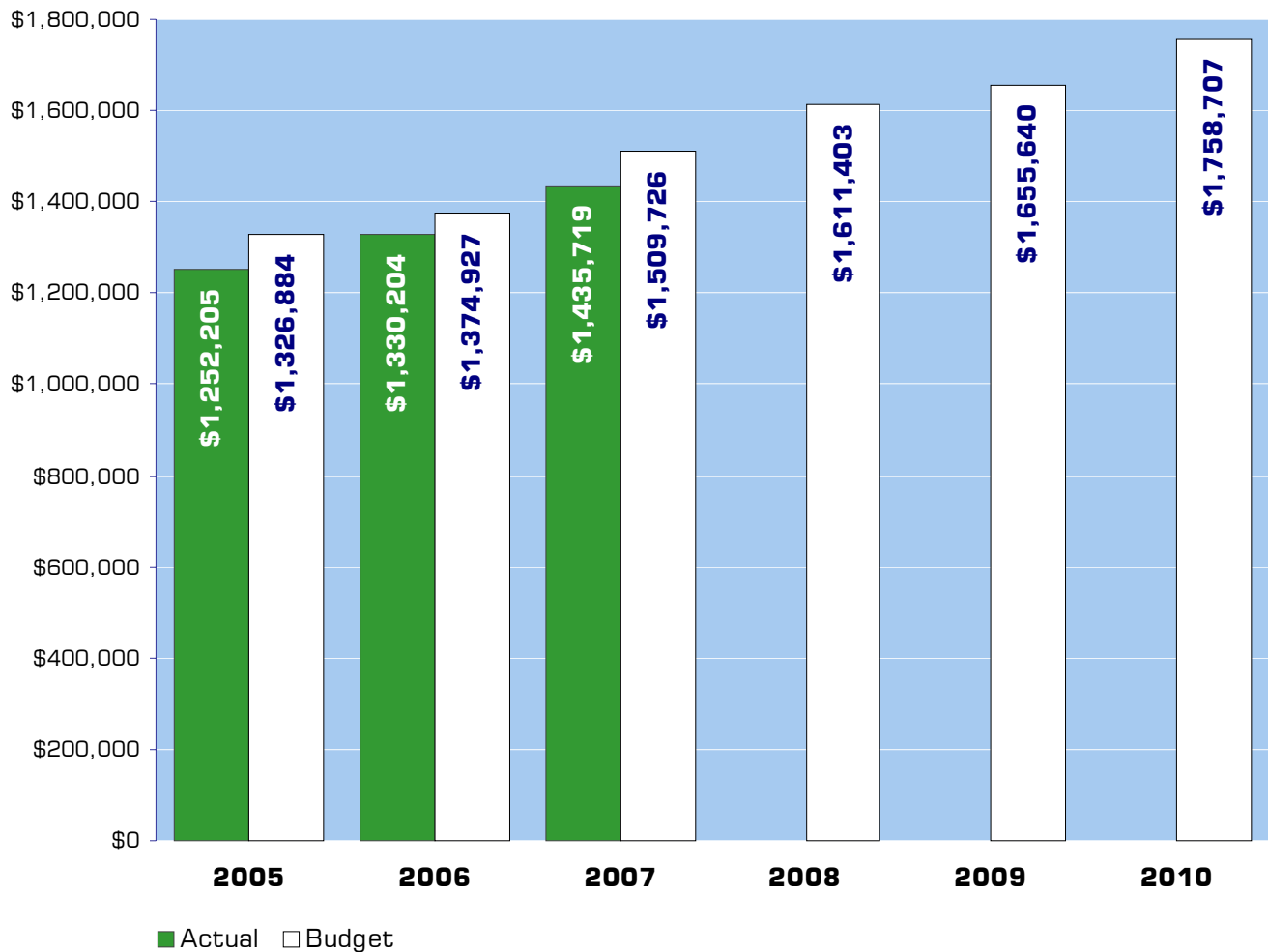
- Work with Western Washington University to provide database information and assist them in compiling statistics to review the effectiveness of this unit and the Domestic Violence Court.
- Continue providing evening check in groups for domestic violence offenders and explore the option of adding a daytime group.
- Management will provide at least twice yearly training on topics related to domestic violence.

Objectives continued

Probation

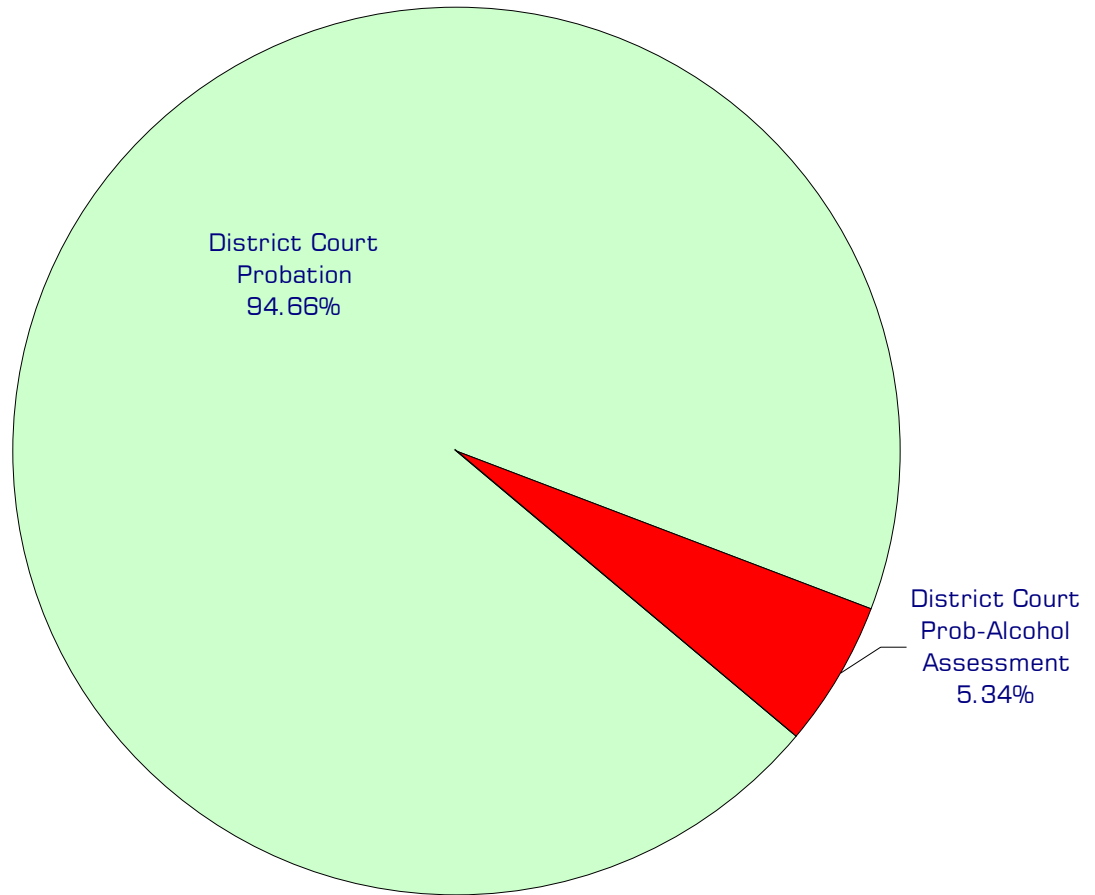
- Provide accurate monitoring of court ordered conditions for all courts served by the Department. Randomly review the following monthly audit reports for each probation officer's caseload:
 - Referrals due to close.
 - Treatment reports 75 days overdue.
 - File reviews: no chronological entry, personal contact or court action in 3 months.
- Provide timely services to individuals referred to probation by the court:
 - 90 % of all Assault cases will be scheduled within two weeks;
 - 90% of all DUI cases will be scheduled within one month;
 - 90% of all Domestic Violence Unit cases will be scheduled with-in five working days.
- Create and update policies and procedures for reporting violations to the court. They will include, at a minimum, the following topic areas:
 - File Closures and Terminations,
 - Monitoring Disulfiram (Antabuse),
 - Requirement Supervision requirements based on risk and rerisk Urinalysis Testing.
- Create efficient and effective communication between local treatment agencies and Whatcom County District Court Probation. Continue to coordinate quarterly meetings with the alcohol/drug and batterers treatment agencies in Whatcom County.
- Coordinate use of community resources with probation services to provide efficient and effective communication between these systems. Invite one local agency at least every other month to present their services to probation staff. The Probation Supervisor will coordinate the invitations and track whether the objectives have been met.
- Create and update policies and procedures for the supports staff. They will include, at minimum, the following topic areas: Scheduling Intake Appointments, Scheduling Emergent Cases, Dealing With Difficult Clients, Record Check Policy.
- Complete accurate alcohol/drug assessment and refer clients to treatment services that are appropriate for their needs.
- Complete the upgrade and stabilization of the Probation database.

Expenditure Trends



NOTE: Capital expenditures and interfund operating transfers are not shown to more accurately reflect ongoing operational costs.

2009-2010 Budget by Program



NOTE: Capital expenditures are not shown to more accurately reflect ongoing operational costs.

Program Summary

	Actual 2005	Actual 2006	Actual 2007	Budget 2008	Budget 2009	Budget 2010
OPERATIONS						
General Fund						
1310 Dist Court Probation	1,000,992	1,103,274	1,371,065	1,524,886	1,567,025	1,665,128
1311 Dist Ct Prob-Alcohol Assment	41,447	45,504	64,654	86,517	88,615	93,579
1312 Dist Court Prob- Contract*	209,766	181,426	-	-	-	-
<i>Total Dist Court Probation Operations</i>	<i>1,252,205</i>	<i>1,330,204</i>	<i>1,435,719</i>	<i>1,611,403</i>	<i>1,655,640</i>	<i>1,758,707</i>
TOTAL DIST COURT PROBATION	1,252,205	1,330,204	1,435,719	1,611,403	1,655,640	1,758,707
<i>Percent Change from Previous Year</i>	<i>11.1%</i>	<i>6.2%</i>	<i>7.9%</i>	<i>12.2%</i>	<i>2.7%</i>	<i>6.2%</i>

*Combined with cost center 1310 in the 2007 - 2008 budget.

2009-2010 Funding Sources

	2009	2010
General Fund	165,837	171,006
Adult Probation Service Fee	945,002	1,023,321
Substance Abuse Service Fee	88,675	88,675
Intergovernmental Services	456,126	475,705
Total Funding	1,655,640	1,758,707

General Fund

Undedicated General Fund resources.

Adult Probation Service Fee

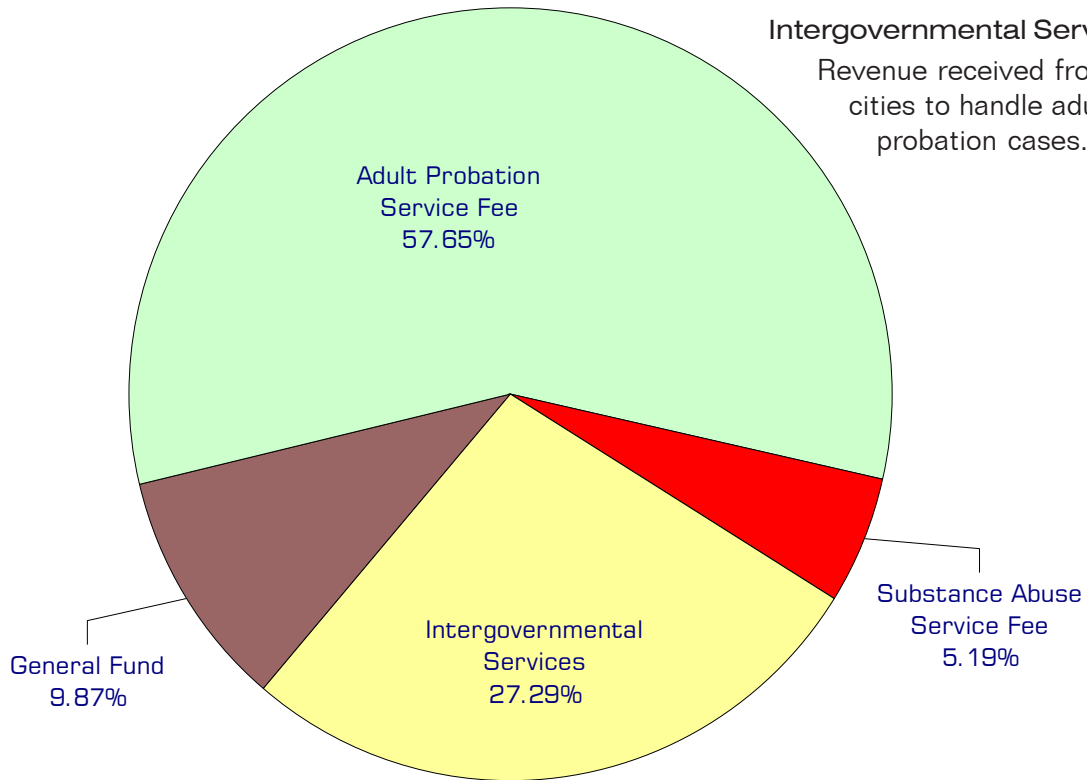
Service fees are paid by adult probationers to cover part of the cost of their supervision.

Substance Abuse Service Fee

Service fees are paid by DUI offenders to cover the cost of court ordered substance abuse evaluations.

Intergovernmental Services

Revenue received from local cities to handle adult probation cases.



Performance / Activity Measures

	Actual 2005	Actual 2006	Actual 2007	Projected 2008	Projected 2009	Projected 2010
Average Caseload Size	330	340	310	320	370	390
UA Testing	5,427	6,285	6,175	6,400	6,400	6,400
Substance Abuse Assessments	333	340	310	320	357	371

Expenditures Summary

	Actual 2005	Actual 2006	Actual 2007	Budget 2008	Budget 2009	Budget 2010
GENERAL FUND						
1310 District Court Probation						
Salaries & Wages	670,696	722,158	850,993	943,084	951,436	1,010,013
Benefits	196,055	239,939	310,657	371,664	375,304	410,547
Supplies	13,311	12,966	25,861	10,605	16,100	16,100
Other Services & Charges	120,930	128,211	183,554	199,533	224,185	228,468
<i>Total District Court Probation</i>	<i>1,000,992</i>	<i>1,103,274</i>	<i>1,371,065</i>	<i>1,524,886</i>	<i>1,567,025</i>	<i>1,665,128</i>
<i>Percent Change from Previous Year</i>	<i>11.0%</i>	<i>10.2%</i>	<i>24.3%</i>	<i>11.2%</i>	<i>2.8%</i>	<i>6.3%</i>
1311 District Court Prob.-Alcohol Assessment						
Salaries & Wages	22,828	26,519	37,013	51,440	61,184	64,460
Benefits	5,077	5,774	13,708	19,225	20,999	22,687
Supplies	1,158	54	1,613	1,784	1,700	1,700
Other Services & Charges	12,384	13,157	12,320	14,068	4,732	4,732
<i>Tot. Dst. Ct. Prob-Alcohol Assess</i>	<i>41,447</i>	<i>45,504</i>	<i>64,654</i>	<i>86,517</i>	<i>88,615</i>	<i>93,579</i>
<i>Percent Change from Previous Year</i>	<i>30.2%</i>	<i>9.8%</i>	<i>42.1%</i>	<i>33.8%</i>	<i>2.4%</i>	<i>5.6%</i>
1312 District Court Probation- Contract*						
Salaries & Wages	137,375	100,634	-	-	-	-
Benefits	36,408	33,613	-	-	-	-
Supplies	2,246	8,730	-	-	-	-
Other Services & Charges	33,737	38,449	-	-	-	-
<i>Total Dst. Ct. Prob-Contract</i>	<i>209,766</i>	<i>181,426</i>	<i>-</i>	<i>-</i>	<i>-</i>	<i>-</i>
<i>Percent Change from Previous Year</i>	<i>8.5%</i>	<i>-13.5%</i>	<i>-100.0%</i>	<i>0.0%</i>	<i>0.0%</i>	<i>0.0%</i>
TOTAL DISTRICT CT. PROB.	1,252,205	1,330,204	1,435,719	1,611,403	1,655,640	1,758,707
<i>Percent Change from Previous Year</i>	<i>11.1%</i>	<i>6.2%</i>	<i>7.9%</i>	<i>12.2%</i>	<i>2.7%</i>	<i>6.2%</i>

*Combined with cost center 1310 in the 2007 - 2008 budget.

Services

Deferred Prosecution - District Court Clients

Monitor compliance with court ordered conditions of Deferred Prosecution.

Pre Trial Probation - District Court Clients

Monitor defendants for compliance with court ordered conditions of release prior to the trial. These cases usually require intensive supervision.

Probation Supervision - District Court Clients

Supervision of individuals placed on court ordered probation.

Assessment Unit

Provide court ordered substance abuse assessments for offenders charged with alcohol/drug related offenses.

Probation, City Contracts

Municipal courts of Sumas, Lynden, Everson, Blaine, and Bellingham contract for probation, deferred prosecution and pre trial services.