

Public Defender's Office

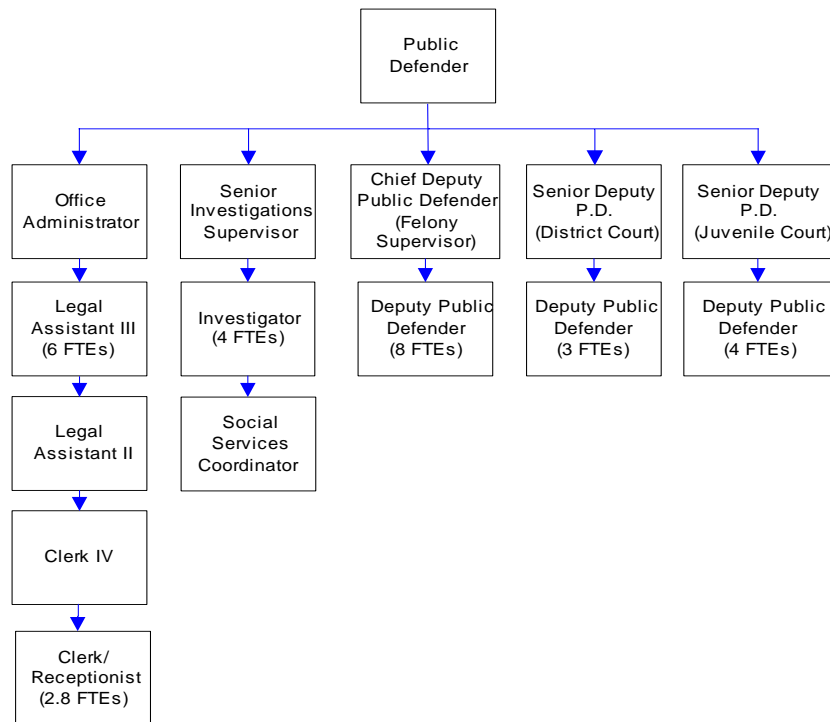
The Public Defender's Office provides constitutionally mandated indigent legal defense for: felony, misdemeanor and probation violation charges against adults and juveniles in Whatcom County Superior and District Courts; parents in juvenile dependency matters; involuntary mental and alcohol commitments.

FTE's for this department

Year	2003	2004	2005	*2006	*2007	*2008
FTE	28.00	28.00	33.50	34.50	36.80	36.80

**budget*

The chart below shows the organizational structure for 2007 only.



Mission & Objectives

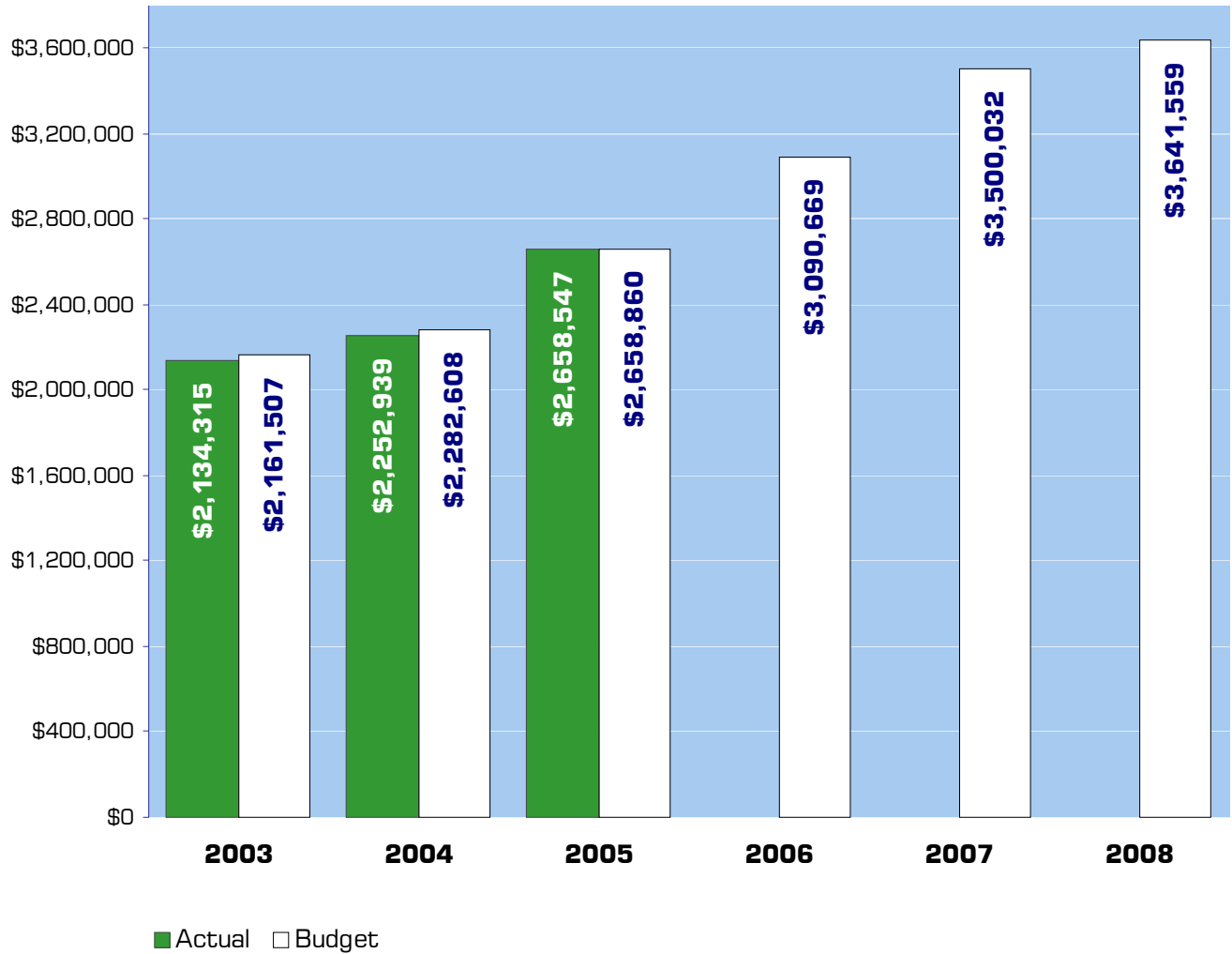
Mission

The Public Defender's Office was created in 1982 by county ordinance pursuant to RCW 36.26 and mandated to provide legal representation for those who cannot afford an attorney and who are entitled to legal defense at public expense pursuant to the constitutions of the United States and the State of Washington, or pursuant to statute. The overall mission of the department is to provide high quality legal representation as efficiently and economically as possible, while maintaining the confidence of clients that they are receiving competent and skilled representation.

Objectives

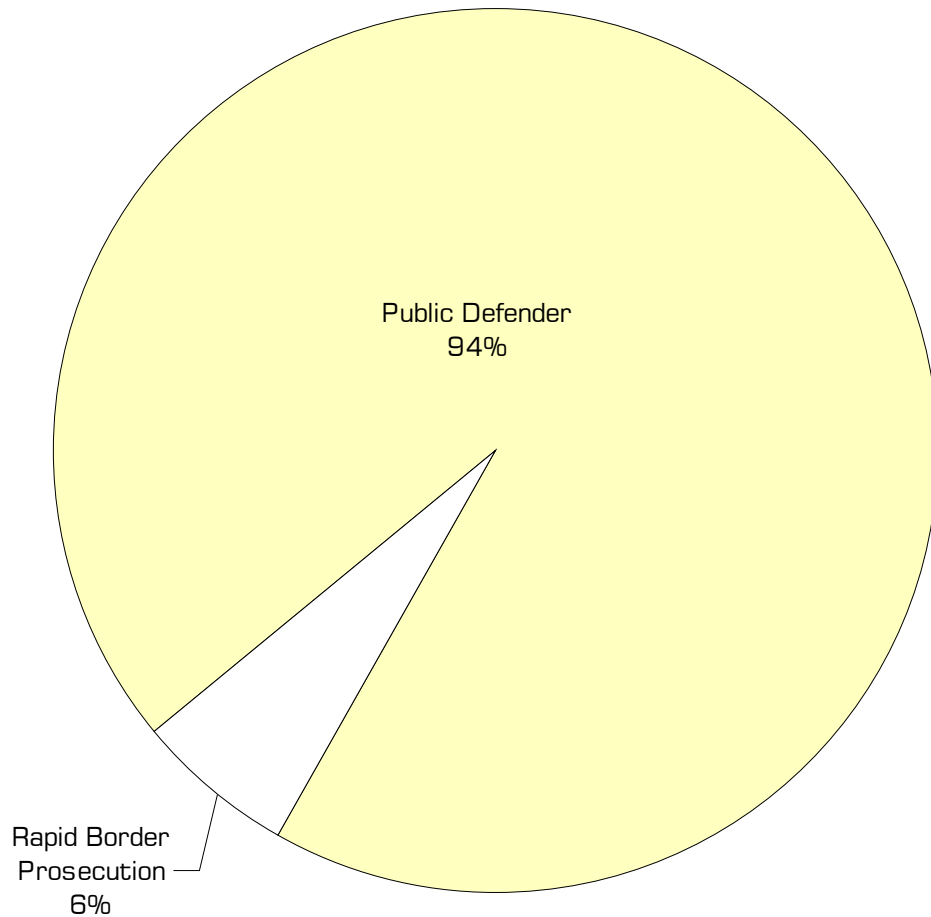
- Provide competent representation to each of our clients.
- Work towards bringing our caseloads closer to national and state standards.
- Work with other branches of the criminal justice system, the Department of Social and Health Services, and the Attorney General's Office to maintain and expand drug courts and family treatment courts in Whatcom County.
- Develop a Policy and Procedures Manual for the Whatcom County Public Defender's Office.

Expenditure Trends



NOTE: Capital expenditures and interfund operating transfers are not shown to more accurately reflect ongoing operational costs.

2007-2008 Budget by Program



NOTE: Capital expenditures are not shown to more accurately reflect ongoing operational costs.

Program Summary

	Actual 2003	Actual 2004	Actual 2005	Budget 2006	Budget 2007	Budget 2008
OPERATIONS						
General Fund						
2650 Public Defender	2,134,315	2,252,939	2,571,971	2,822,121	3,216,338	3,347,742
2665 Public Defender- RBP	-	-	86,576	180,648	199,621	207,365
2675 Public Defender Move	-	-	-	87,900	-	-
<i>Total Public Defender Operations</i>	<i>2,134,315</i>	<i>2,252,939</i>	<i>2,658,547</i>	<i>3,090,669</i>	<i>3,500,032</i>	<i>3,641,559</i>
CAPITAL						
General Fund						
2650 Public Defender	-	-	-	8,937	-	-
2675 Public Defender Move	-	-	-	156,400	-	-
<i>Total Public Defender Capital</i>	<i>-</i>	<i>-</i>	<i>-</i>	<i>165,337</i>	<i>-</i>	<i>-</i>
TOTAL PUBLIC DEFENDER	2,134,315	2,252,939	2,658,547	3,256,006	3,500,032	3,641,559
<i>Percent Change from Previous Year</i>	<i>5.9%</i>	<i>5.6%</i>	<i>18.0%</i>	<i>22.5%</i>	<i>7.5%</i>	<i>4.0%</i>

2007-2008 Funding Sources

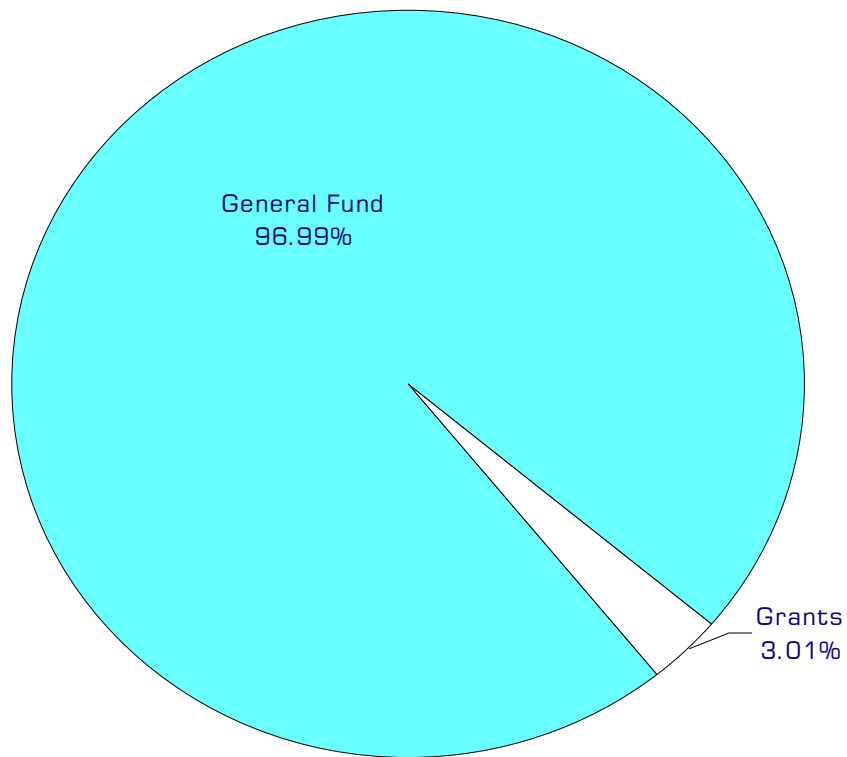
	2007	2008
Grants	106,367	108,368
General Fund	3,393,665	3,533,191
Total Funding	3,500,032	3,641,559

Grants

Revenue received from the State of Washington.

General Fund

Undedicated General Fund resources.



Performance / Activity Measures

	Actual 2003	Actual 2004	Actual 2005	Projected 2006	Projected 2007	Projected 2008
Felonies	1,494	1,563	1,884	1,704	1,796	1,853
Probation Violations (Sup/Dist Cts)	292	276	302	322	333	345
Misdemeanors	1,566	1,514	1,434	1,934	2,104	2,289
Juvenile (Delinquency)	917	744	725	706	608	524
Juvenile (Probation)	694	726	580	666	657	657
Juvenile (Dependency)	212	279	267	379	467	574
Mental/Alcohol Commitments	199	226	296	332	395	470
Appeals/Other	59	33	19	14	9	6
Total	5,433	5,365	5,507	6,057	6,369	6,718

Expenditures Summary

	Actual 2003	Actual 2004	Actual 2005	Budget 2006	Budget 2007	Budget 2008
GENERAL FUND						
2650 Public Defender						
Salaries & Wages	1,450,756	1,521,430	1,711,306	1,793,296	1,930,075	1,996,440
Benefits	340,397	393,847	471,148	544,080	656,464	725,298
Supplies	35,852	40,482	75,972	43,551	57,295	47,185
Other Services & Charges	307,310	297,180	313,545	441,194	572,504	578,819
Capital Outlay	-	-	-	8,937	-	-
<i>Total Public Defender</i>	<i>2,134,315</i>	<i>2,252,939</i>	<i>2,571,971</i>	<i>2,831,058</i>	<i>3,216,338</i>	<i>3,347,742</i>
<i>Percent Change from Previous Year</i>	<i>6.3%</i>	<i>5.6%</i>	<i>14.2%</i>	<i>10.1%</i>	<i>13.6%</i>	<i>4.1%</i>
2667 PD-Office of Public Defense Grant						
Salaries & Wages	-	-	-	-	57,780	60,060
Benefits	-	-	-	-	20,167	22,316
Supplies	-	-	-	-	3,200	1,200
Other Services & Charges	-	-	-	-	2,926	2,876
<i>Total PD-Office of Public Def. Grant</i>	<i>-</i>	<i>-</i>	<i>-</i>	<i>-</i>	<i>84,073</i>	<i>86,452</i>
2665 Public Defender- Rapid Border Prosecution						
Salaries & Wages	-	-	68,651	138,428	149,388	152,220
Benefits	-	-	17,925	42,220	50,233	55,145
<i>Total Rapid Border Prosecution</i>	<i>-</i>	<i>-</i>	<i>86,576</i>	<i>180,648</i>	<i>199,621</i>	<i>207,365</i>
<i>Percent Change from Previous Year</i>	<i>0.0%</i>	<i>0.0%</i>	<i>0.0%</i>	<i>108.7%</i>	<i>10.5%</i>	<i>3.9%</i>
2675 Public Defender Move						
Salaries & Wages	-	-	-	400	-	-
Supplies	-	-	-	6,000	-	-
Other Services & Charges	-	-	-	81,500	-	-
Capital Outlay	-	-	-	156,400	-	-
<i>Total Public Defender Move</i>	<i>-</i>	<i>-</i>	<i>-</i>	<i>244,300</i>	<i>-</i>	<i>-</i>
<i>Percent Change from Previous Year</i>	<i>0.0%</i>	<i>0.0%</i>	<i>0.0%</i>	<i>0.0%</i>	<i>-100.0%</i>	<i>0.0%</i>
TOTAL PUBLIC DEFENDER	2,134,315	2,252,939	2,658,547	3,256,006	3,500,032	3,641,559
<i>Percent Change from Previous Year</i>	<i>5.9%</i>	<i>5.6%</i>	<i>18.0%</i>	<i>22.5%</i>	<i>7.5%</i>	<i>4.0%</i>

Services

Public Defender

Provides criminal defense for indigents in Whatcom County, and representation for parents in dependency cases and for individuals undergoing involuntary mental health and alcohol commitment proceedings.

