

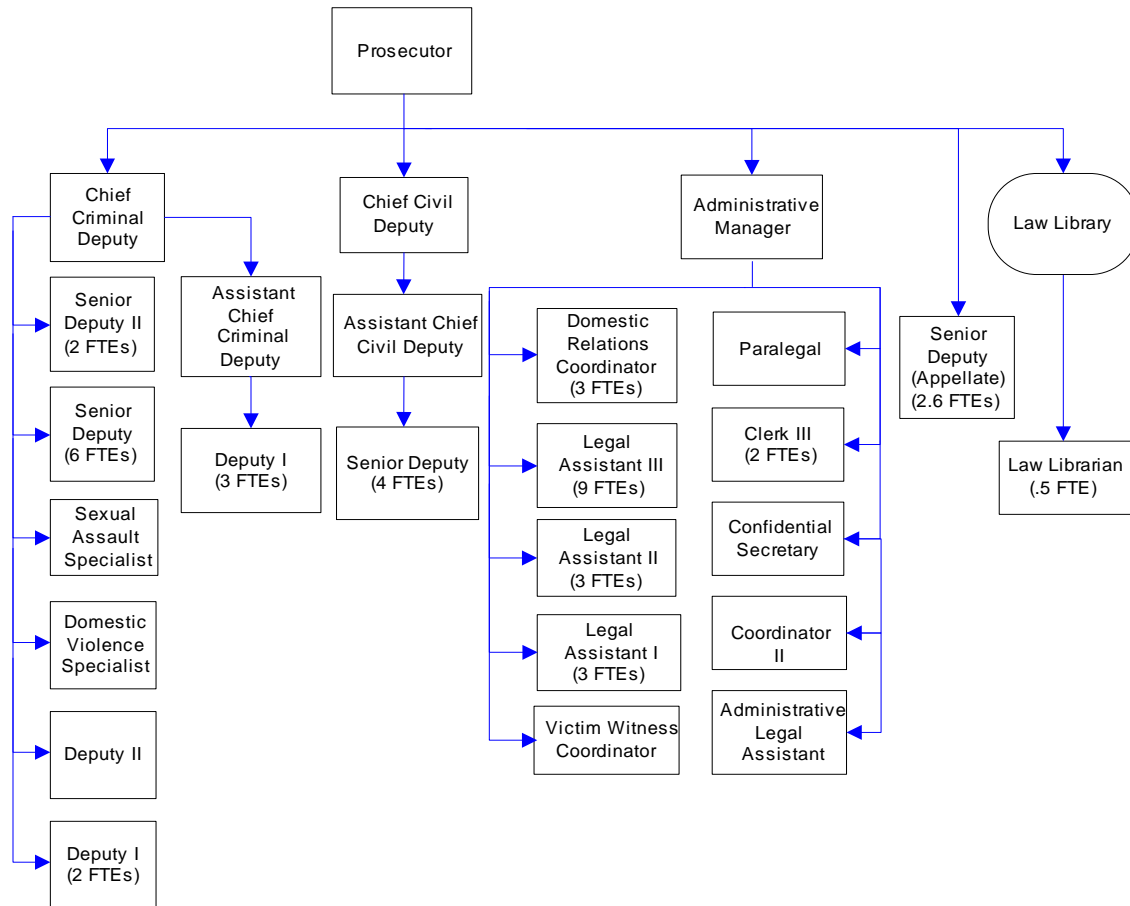
Prosecuting Attorney

An elected official, the Prosecuting Attorney prosecutes criminal acts within the county, provides legal advice and legal services to county officials and staff, and represents and defends the county. The Prosecuting Attorney's Office also provides assistance to victims of crime, sexual abuse and domestic violence.

FTE's for this department

Year	2003	2004	2005	*2006	*2007	*2008	*budget
FTE	48.60	48.60	52.60	52.60	53.60	53.60	

The chart below shows the organizational structure for 2007 only.



Mission & Objectives

Mission

Prosecuting Attorney

Provide just, equitable and high quality legal representation, effectively and efficiently, when prosecuting criminal actions, when advising or defending county officials or employees on civil matters that pertain to or affect the interests of the county and when carrying out statutorily mandated duties on behalf of the State of Washington.

Seek to ensure that justice is accomplished within the framework of the United States constitution, the state constitution and the laws of this state. Provide services to victims and witnesses to ensure their fair treatment within the criminal justice system. Identify, locate and compel the absent parents of children receiving state assistance to pay for the support of their children instead of the public.

Assist in developing goals and objectives for the criminal justice system that ensure delivery of services to the community that enhance public safety.

Law Library

Provide a fundamental level of current legal materials unavailable elsewhere in the county. Meet the legal research needs of the courts, the bar association, county employees and the citizens of Whatcom County. To implement this mission, the library provides access to legal information sources in the most cost-effective manner through print or electronic means and through interlibrary loan.

Objectives

- Maintain and use the following performance measures as a means to define sufficient staffing and funding levels:
 - Felony cases** - 10 working days from receipt of incident report to charging decision. In 2007 the goal is 15 days.
 - Juvenile Division** - 7 working days from receipt of incident report to charging decision. The 2007 the goal is 25 days.
 - District Court Division** - 150 days from filing date to final disposition. In 2007 the goal is 175 days.
- Expand the caseload in the Child Support Division to include order modifications, dissolution appearances, and miscellaneous responding cases.
- Utilize new Domestic Relations Coordinator to provide assistance in handling the new caseload.
- Continue with the development and expansion of the "Fast Track" case process and use this as a model to expedite all of the criminal caseload. The goal of all of the criminal divisions should be to promote the handling of cases in a just, equitable fashion that also reduces the time from filing to completion of the case. The present average is 198 days. The goal for felony cases in 2007, from filing to completion, is 175 days.

Objectives continued

- Maintain sufficient staff to provide just, equitable and high quality legal representation on both the criminal and civil sides of the office. Staffing be at a sufficient level to meet the caseload standards per attorney we have established in the criminal divisions as follows: Felony Deputies - 150 cases per attorney; Juvenile Deputies - 350 cases per attorney; District Court Deputies - 800 cases per attorney. The civil division staffing should be at a level that allows for thorough and high quality legal representation for Whatcom County.
- Continue with the development of the digital brief bank utilizing software, with natural language selection search capabilities, that facilitates searches by legal topic.
- Allocate sufficient departmental staff resources to assure the success of the MIS data integration project.
- Encourage attorneys in the office to use technology in the courtrooms for presentations of evidence to juries.
- Identify and implement procedures that use technology to maximize efficiency and ensure production of consistent, high quality work product. Research, design and implement innovative technological solutions that improve efficiency in case processing. Complete the implementation of LaserFiche.

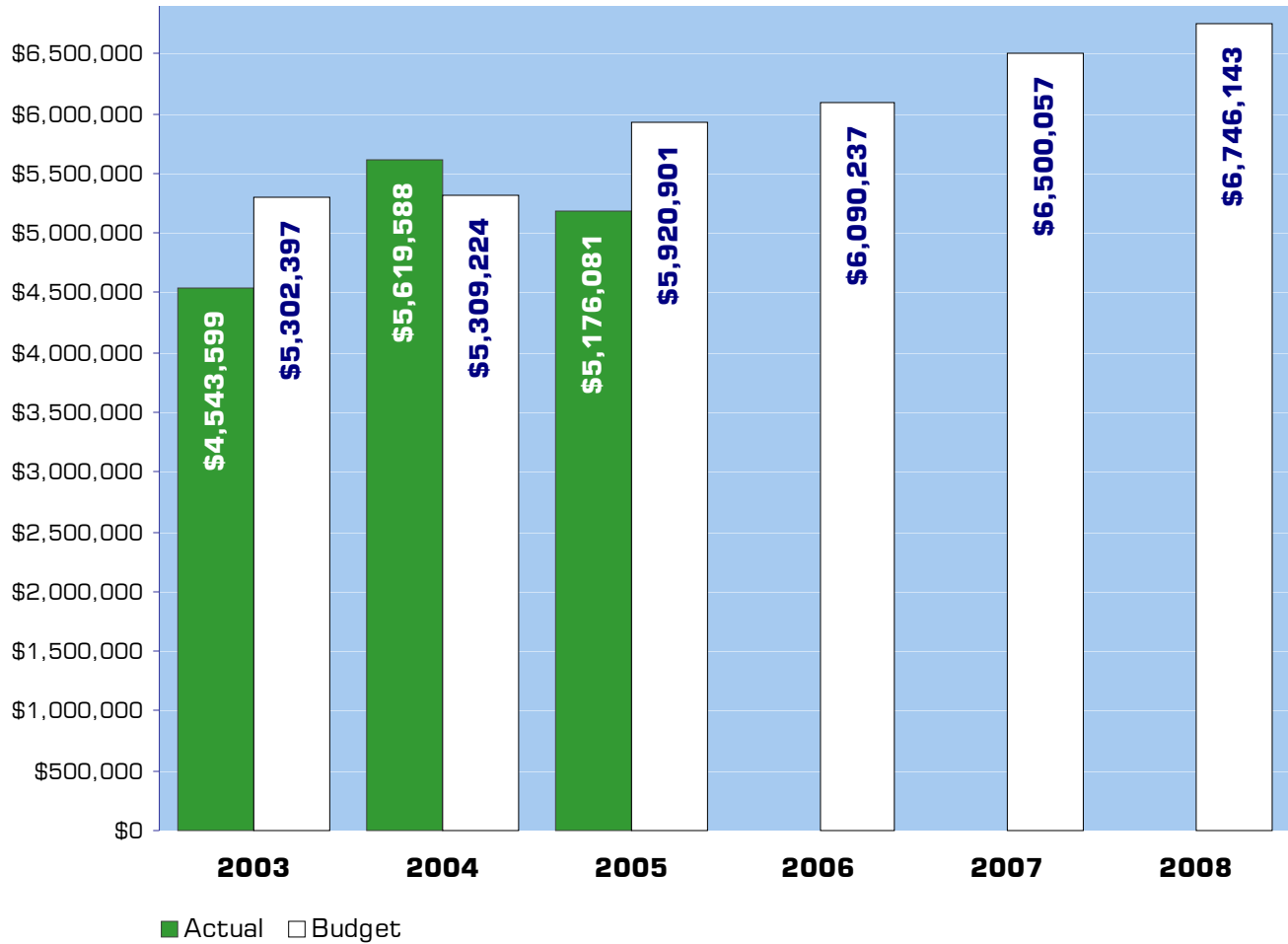
Victim / Witness

- Develop and implement performance measures for all divisions in the office. The continuing focus in 2007 will be the definition of measures for the Victim/Witness Unit.

Law Library

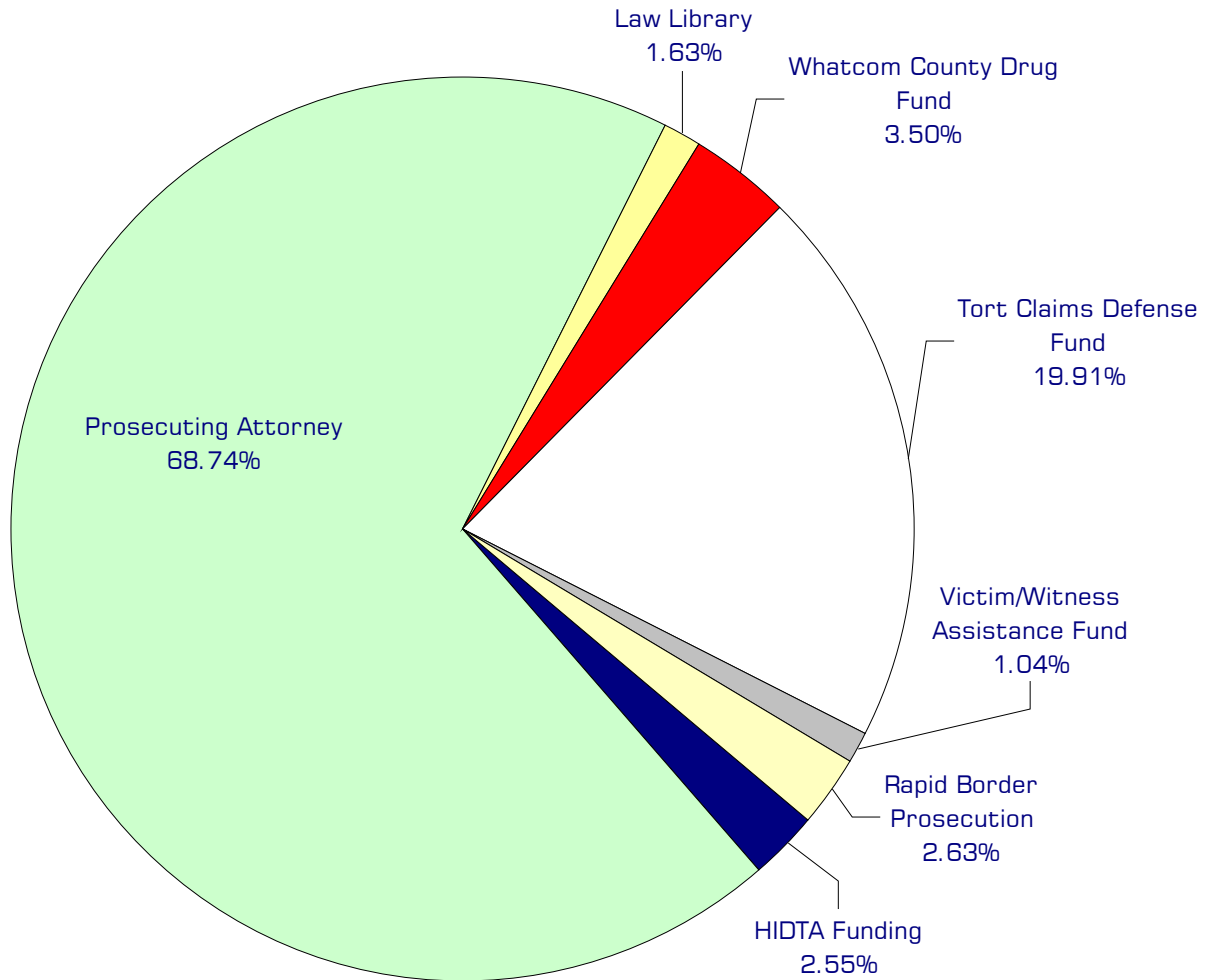
- Provide a fundamental level of current legal materials unavailable elsewhere in the county, to meet the legal research needs of the courts, the bar, county employees and citizens of Whatcom County.
- Provide access to legal information sources in the most cost-effective manner through print or electronic formats maintained in or accessed through the library, interlibrary loan, and referral to document delivery sources.
- Participate in cooperative efforts with other public and academic libraries, community agencies, and other public institutions to improve public access to legal information.
- Evaluate and apply information technologies to maximize efficient and cost-effective access to legal research resources, and to facilitate management of the Law Library's information resources.
- Seek out additional funding sources and cost-saving measures to keep pace with rising costs of legal materials.

Expenditure Trends



NOTE: Capital expenditures and interfund operating transfers are not shown to more accurately reflect ongoing operational costs.

2007-2008 Budget by Program



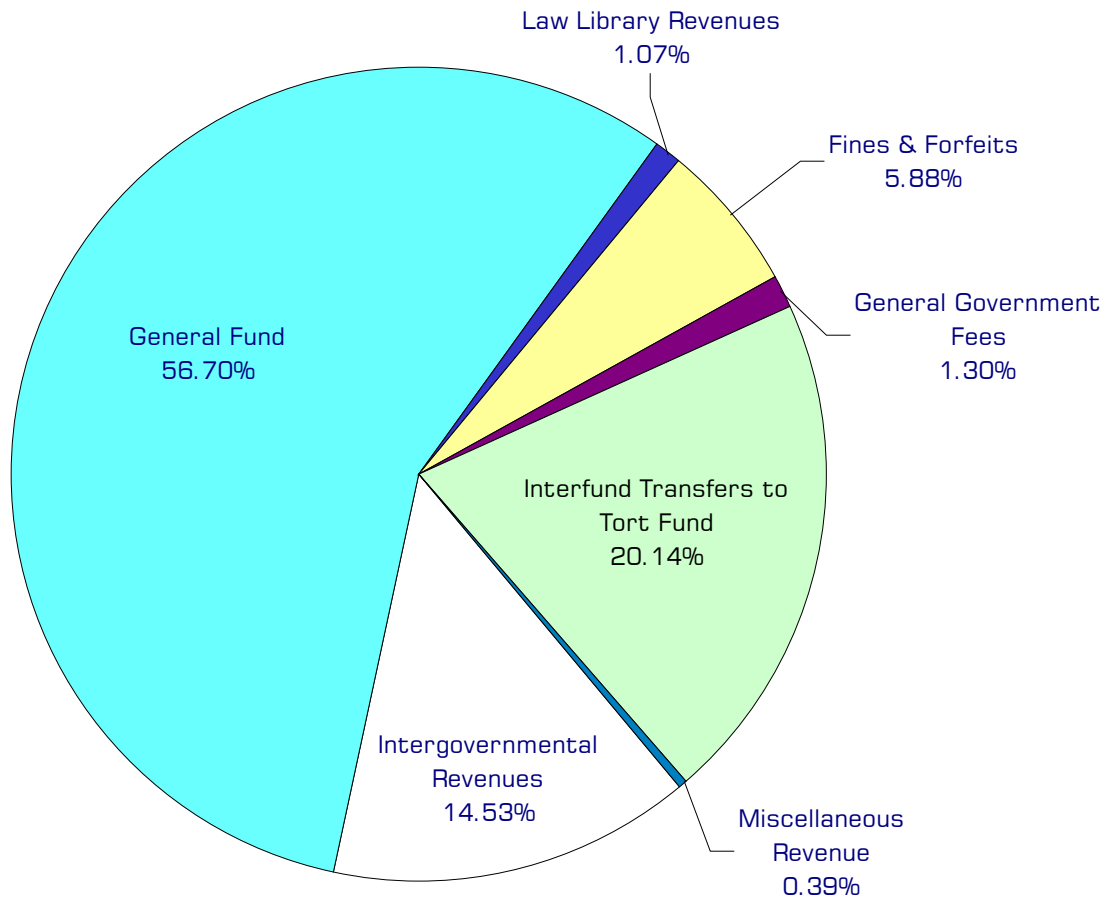
NOTE: Capital expenditures and interfund operating and residual equity transfers are not shown to more accurately reflect ongoing operational costs.

Program Summary

	Actual 2003	Actual 2004	Actual 2005	Budget 2006	Budget 2007	Budget 2008
OPERATIONS						
General Fund						
2600 Pros Atty/Support Enforcmt	3,357,218	3,539,763	3,823,433	3,974,070	4,456,145	4,648,906
2625 PA-Rapid Border Prosecution	-	-	87,420	160,743	172,580	176,406
2630 Law Library	89,101	83,184	88,794	106,786	105,839	109,491
2640 PA-HIDTA Funding	125,885	135,244	147,832	151,766	165,156	172,423
507 AS - General Liability	762,126	1,669,889	830,660	1,400,727	1,300,260	1,337,012
142 Victim/Witness Assist Fund	51,932	56,024	60,110	64,145	68,077	69,905
165 Whatcom Co. Drug Fund	157,337	135,484	137,832	232,000	232,000	232,000
<i>Total Prosecuting Atty Operations</i>	4,543,599	5,619,588	5,176,081	6,090,237	6,500,057	6,746,143
CAPITAL						
General Fund						
2600 Pros. Atty/Support Enforcmt	-	4,918	-	-	-	-
165 Whatcom Co. Drug Fund	63,758	19,399	-	50,000	50,000	50,000
<i>Total Prosecuting Attorney Capital</i>	63,758	24,317	-	50,000	50,000	50,000
TRANSFERS						
General Fund						
2600 Pros. Atty/Support Enforcmt	1,500	1,500	1,500	1,500	-	-
507 AS - General Liability	119,372	122,788	125,532	125,532	146,415	150,213
142 Victim/Witness Assist Fund	53,844	60,815	63,986	66,222	51,061	52,752
165 Whatcom Co. Drug Fund	414,330	424,400	440,472	484,907	516,228	537,467
<i>Total Pros Attorney Transfers</i>	589,046	609,503	631,490	678,161	713,704	740,432
TOTAL PROSECUTING ATTORNEY	5,196,403	6,253,408	5,807,571	6,818,398	7,263,761	7,536,575
<i>Percent Change from Previous Year</i>	12.9%	20.3%	-7.1%	17.4%	6.5%	3.8%

2007-2008 Funding Sources

	2007	2008
Intergovernmental Revenues	917,423	936,545
General Fund	3,530,546	3,704,520
Law Library Revenues	67,550	69,285
Fines & Forfeits	375,000	375,000
General Government Fees	83,000	83,000
Interfund Transfers to Tort Fund	1,223,573	1,345,933
Miscellaneous Revenue	30,000	20,000
*Fund Balance	272,965	211,860
Total Funding	6,500,057	6,746,143



*Fund balance is not included in the above chart.

Funding Sources continued

Intergovernmental Revenues

The Prosecuting Attorney's Office receives various federal and state grants for specific operations. The federal government provides approximately \$690,000 annually for Child Support Enforcement and \$165,000 annually for drug traffic prosecution. Additionally, pursuant to RCW 36.17.020, Washington State pays for one half of the Prosecuting Attorney's salary.

General Fund

Undedicated General Fund resources.

Law Library Revenues

The Law Library receives fees on each District Court and Superior Court civil filing. The library also receives a small amount of donations.

Fines & Forfeits

The Drug Fund receives revenue from fines and forfeits of drug related seized assets. The Victim/Witness Assistance Fund receives a portion of all fees, fines, and forfeits received by all municipalities in Whatcom County.

General Government Fees

Fee revenues collected by District Court and Superior Court, which are dedicated to support the Victim/Witness Fund.

Interfund Transfers to Tort Fund

Each county department contributes a set amount for tort claims. Reserves for tort claims are maintained in the Administrative Services Fund.

Miscellaneous Revenues

Interest income received from investing Drug Fund cash accounts.

Fund Balance

Current year operations will result in a projected fund balance decrease in the Administrative Services - Tort Fund for liability insurance of \$233,102 in 2007 and \$141,292 in 2008. The Victim Witness fund balance projected decrease is \$2,138 in 2007 and \$5,657 in 2008. The Drug Fund balance should decrease by \$47,725 in 2007 and \$64,911 in 2008.

Performance / Activity Measures

	Actual 2003	Actual 2004	Actual 2005	Projected 2006	Projected 2007	Projected 2008
Superior Court Cases- days to charging (goal is 10 or less)	19	12	18	19	19	19
Juvenile Cases- days to charging (goal is 7 or less)	29	43	62	68	68	43
District Court Cases - days to disposition (goal is 150 or less)	205	306	232	199	192	185
<i>Law Library</i>						
Usage of computer - times accessed	3,000	3,000	3,000	3,000	3,000	3,000
Library hours of staff present per week	20	20	20	20	20	20
Requests for reference assistance and information	1,625	1,625	1,650	1,650	1,650	1,650
Non-attorney visits/emails/phonecalls	1,700	1,700	1,725	1,725	1,750	1,750
Attorney visits/emails/phonecalls	1,525	1,525	1,525	1,525	2,000	2,000
Interlibrary loan requests	60	40	40	24	24	24
Subscriptions	35	30	30	30	60	60
Volumes	22,000	22,500	23,000	23,500	20,000	20,000
<i>Tort Claims</i>						
General Liability - Claims against Whatcom County	70	56	59	52	58	58

Expenditures Summary

	Actual 2003	Actual 2004	Actual 2005	Budget 2006	Budget 2007	Budget 2008
GENERAL FUND						
2600 Prosecuting Attorney						
Salaries & Wages	2,365,617	2,477,989	2,691,702	2,732,848	2,969,525	3,048,411
Benefits	549,470	638,821	717,487	814,892	984,235	1,084,190
Supplies	54,054	75,575	61,746	60,650	67,600	67,600
Other Services & Charges	388,077	347,378	352,498	365,680	434,785	448,705
Capital Outlay	-	4,918	-	-	-	-
Residual Equity Transfers	1,500	1,500	1,500	1,500	-	-
<i>Total Prosecuting Attorney</i>	<i>3,358,718</i>	<i>3,546,181</i>	<i>3,824,933</i>	<i>3,975,570</i>	<i>4,456,145</i>	<i>4,648,906</i>
<i>Percent Change from Previous Year</i>	<i>5.2%</i>	<i>5.6%</i>	<i>7.9%</i>	<i>3.9%</i>	<i>12.1%</i>	<i>4.3%</i>
2625 PA-Rapid Border Prosecution						
Salaries & Wages	-	-	68,594	125,172	130,740	130,860
Benefits	-	-	18,826	35,571	41,840	45,546
<i>Total Rapid Border Prosecution</i>	<i>-</i>	<i>-</i>	<i>87,420</i>	<i>160,743</i>	<i>172,580</i>	<i>176,406</i>
<i>Percent Change from Previous Year</i>	<i>-100.0%</i>	<i>0.0%</i>	<i>0.0%</i>	<i>83.9%</i>	<i>7.4%</i>	<i>2.2%</i>
2640 PA-HIDTA Funding						
Salaries & Wages	101,286	107,288	116,812	117,241	124,343	127,465
Benefits	24,599	27,956	31,020	34,525	40,813	44,958
<i>Total HIDTA Funding</i>	<i>125,885</i>	<i>135,244</i>	<i>147,832</i>	<i>151,766</i>	<i>165,156</i>	<i>172,423</i>
<i>Percent Change from Previous Year</i>	<i>11.2%</i>	<i>7.4%</i>	<i>9.3%</i>	<i>2.7%</i>	<i>8.8%</i>	<i>4.4%</i>
LAW LIBRARY						
2630 Law Library Operations						
Salaries & Wages	19,004	19,660	18,514	20,983	22,217	23,065
Benefits	8,750	9,711	5,335	12,317	14,004	15,400
Supplies	36,370	32,537	42,783	50,241	40,606	41,059
Other Services & Charges	24,977	21,276	22,162	23,245	29,012	29,967
<i>Total Law Library</i>	<i>89,101</i>	<i>83,184</i>	<i>88,794</i>	<i>106,786</i>	<i>105,839</i>	<i>109,491</i>
<i>Percent Change from Previous Year</i>	<i>-1.5%</i>	<i>-6.6%</i>	<i>6.7%</i>	<i>20.3%</i>	<i>-0.9%</i>	<i>3.5%</i>
<i>Total General Fund</i>	<i>3,573,704</i>	<i>3,764,609</i>	<i>4,148,979</i>	<i>4,394,865</i>	<i>4,899,720</i>	<i>5,107,226</i>
<i>Percent Change from Previous Year</i>	<i>5.2%</i>	<i>5.3%</i>	<i>10.2%</i>	<i>5.9%</i>	<i>11.5%</i>	<i>4.2%</i>
507 ADMIN SERVICES - GENERAL LIABILITY						
Other Services & Charges	762,126	1,669,889	830,660	1,400,727	1,300,260	1,337,012
Operating Transfers	119,372	122,788	125,532	125,532	146,415	150,213
<i>Total Adm Svcs - Gen'l Liability</i>	<i>881,498</i>	<i>1,792,677</i>	<i>956,192</i>	<i>1,526,259</i>	<i>1,446,675</i>	<i>1,487,225</i>
<i>Percent Change from Previous Year</i>	<i>49.9%</i>	<i>103.4%</i>	<i>-46.7%</i>	<i>59.6%</i>	<i>-5.2%</i>	<i>2.8%</i>

continued on next page

Expenditures Summary continued

	Actual 2003	Actual 2004	Actual 2005	Budget 2006	Budget 2007	Budget 2008
142 VICTIM/ WITNESS FUND						
Salaries & Wages	35,635	37,372	42,298	42,336	43,224	43,284
Benefits	10,518	11,575	12,998	14,673	16,897	18,426
Other Services & Charges	5,779	7,077	4,814	7,136	7,956	8,195
Operating Transfers	53,844	60,815	63,986	66,222	51,061	52,752
<i>Total Victim/Witness Fund</i>	<i>105,776</i>	<i>116,839</i>	<i>124,096</i>	<i>130,367</i>	<i>119,138</i>	<i>122,657</i>
<i>Percent Change from Previous Year</i>	<i>-16.0%</i>	<i>10.5%</i>	<i>6.2%</i>	<i>5.1%</i>	<i>-8.6%</i>	<i>3.0%</i>
165 DRUG FUND						
Supplies	2,987	43,657	19,287	50,000	50,000	50,000
Other Services & Charges	154,350	91,827	118,545	182,000	182,000	182,000
Capital Outlay	63,758	19,399	-	50,000	50,000	50,000
Operating Transfers	414,330	424,400	440,472	484,907	516,228	537,467
<i>Total Drug Fund</i>	<i>635,425</i>	<i>579,283</i>	<i>578,304</i>	<i>766,907</i>	<i>798,228</i>	<i>819,467</i>
<i>Percent Change from Previous Year</i>	<i>29.5%</i>	<i>-8.8%</i>	<i>-0.2%</i>	<i>32.6%</i>	<i>4.1%</i>	<i>2.7%</i>
TOTAL PROSECUTING ATTY	5,196,403	6,253,408	5,807,571	6,818,398	7,263,761	7,536,575
<i>Percent Change from Previous Year</i>	<i>12.9%</i>	<i>20.3%</i>	<i>-7.1%</i>	<i>17.4%</i>	<i>6.5%</i>	<i>3.8%</i>

Services

Civil Practice

Provide legal counsel and representation to all county departments, the Executive's Office and the County Council.

Criminal Prosecution/Felony

Represents the State of Washington in the prosecution of adults and remanded juveniles who commit felony offenses. Assists authorities in determining probable cause, obtaining search warrants, interpretation and application of the law, and on case investigation issues.

Criminal Prosecution/Juvenile

Represent the interests of the State of Washington in the adjudication of juvenile offenders who commit felony or misdemeanor criminal acts, excluding criminal traffic misdemeanors committed by offenders over the age of sixteen.

Criminal Prosecution/Misdemeanor & Criminal Traffic

Represent the State of Washington in the prosecution of misdemeanor and criminal traffic offenses committed by adults and in criminal traffic matters committed by juveniles who are over the age of sixteen.

Paternity/Support Enforcement Unit

Represent the interest of the child and State in legal actions brought under RCW 26, to establish paternity and/or enforce the payment of child support in an effort to reduce public assistance expenditures.

Victim/Witness Unit

Provide information, assistance and advocacy to victims or witnesses in order to facilitate prosecution efforts.

Law Library

Interlibrary Loan/Resource Sharing

Provides access to legal research resources unavailable in this library and elsewhere in Whatcom County.

Law Library

Provides effective access to legal research materials to support the legal research needs of the courts, the bar, county administration, and the public in Whatcom County.