

# Planning & Development Services

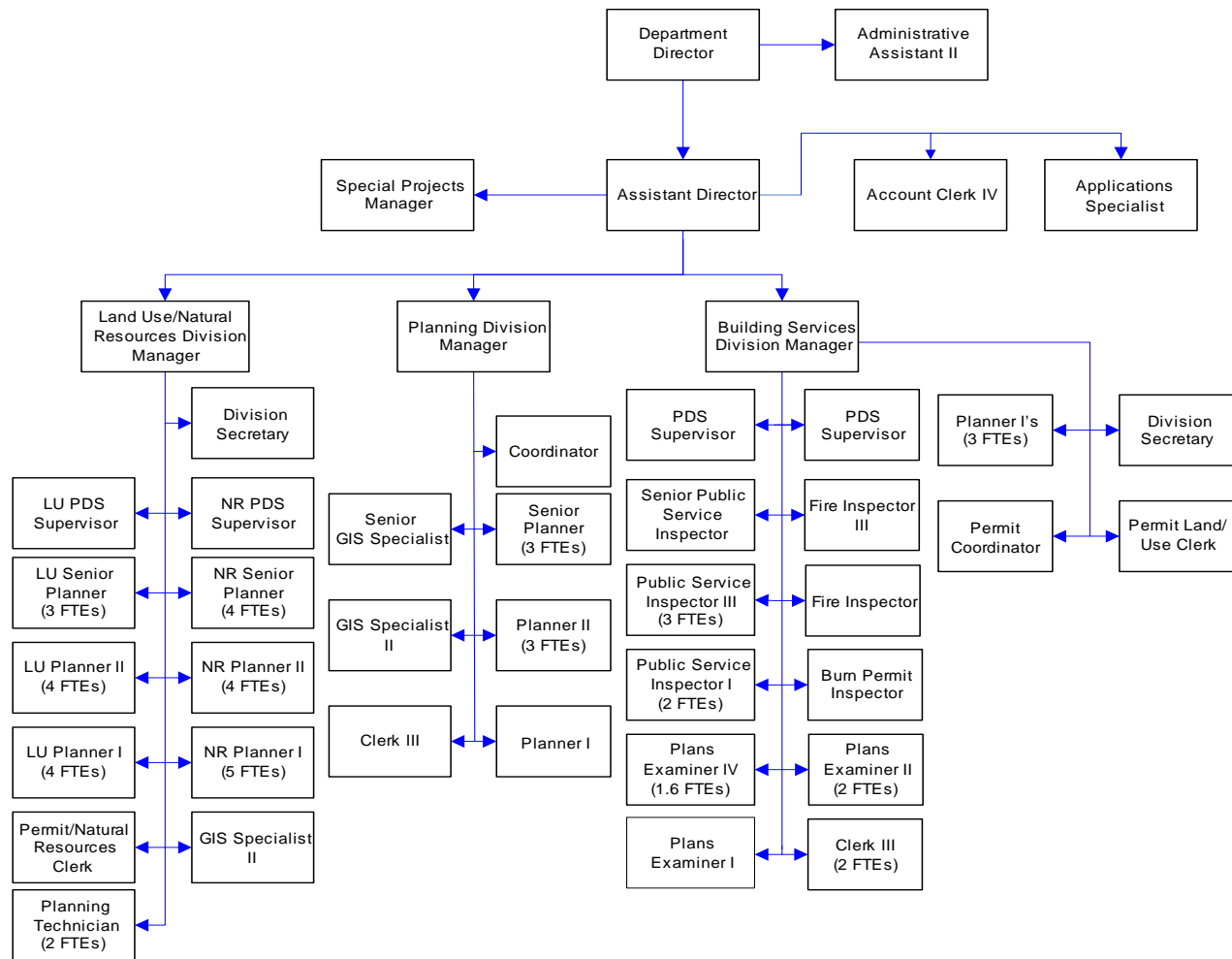
Divisions and their services are: Building Services (construction permits of all kinds, life safety code enforcement, plan check/inspection, burn permits, fire safety inspections); Land Use Services (pre-construction zoning, shorelines, SEPA, land use, critical areas, subdivisions, land use code enforcement); Planning Services (long range planning, comprehensive plans, growth management, water resources).

## FTE's for this department

Year	2003	2004	2005	*2006	*2007	*2008
FTE	49.35	57.00	69.60	72.60	75.60	74.60

*\*budget*

The chart below shows the organizational structure for 2007 only.



## Mission & Objectives

### Mission

#### Administration

Maintain or improve current levels of service to Whatcom County customers/clients and community groups. Manage technology dollars to benefit customers through improved Geographic Information Systems collaboration, ongoing refinement of the Whatcom County Permit Plan System, and county-wide coordination and data sharing efforts.

Support and partner with the Economic Development Council/Port of Bellingham/Greater Whatcom Chamber of Commerce to implement the Community Economic Development Strategy (CEDS).

Focus on public outreach and education prior to the Comprehensive Plan Updates. Focus on Natural Resource Management efforts including: (1) greater focus on increased habitat; (2) a systems examination of water quality management/WRIA implementation; (3) increased efforts to work with willing property owners to conserve key lands; (4) active coordination of county efforts with the actions of community groups, organizations and business groups.

#### Building Services

Provide excellent customer service that promotes better construction for the consumer, builder and the environment resulting in greater safety for the community. Prevent and/or limit the loss of life and property due to fire.

#### Land Use

Support Whatcom County's quality of life, environmental values, and economic vitality by implementing the Whatcom County

Comprehensive Plan through daily administration of land use ordinances and development standards. Strive for leadership in customer service, management and preservation of agricultural and natural resource lands, planning of land development and support facilities, effective and efficient permit management, and code development and enforcement.

#### Planning

Enhance and protect the quality of life and comply with state and federal mandates by preparing land use, transportation and facility plans, policies and regulations to guide and regulate land development within Whatcom County. Provide information and assistance to advisory boards, legislative bodies and the County Executive regarding land use, natural resources, and economic development issues.

## Objectives

#### Administration

- Seek greater public input from the Whatcom County community. Create more opportunities to interact directly with the community through subarea planning efforts, participation in local community events and attendance at community forums. Recommend policies and actions that will promote and achieve the following:
  - ◆ Involve the citizens in transportation planning through the six-year transportation plan.
  - ◆ Involve county staff, citizens and businesses in understanding Land Use and Transportation linkages.

Objectives continued

- ◆ Involve citizens, businesses, and institutions in economic development planning and coordination.
- Provide accurate and timely service to the public using available resources by:
  - ◆ Ensuring all facets of the permit process are responsive to individual customer needs.
  - ◆ Maintaining a customer service focus by shifting employees during peak periods of the construction and permitting seasons, and utilizing floater positions during short-term spikes in permit activities.
  - ◆ Supporting front counter improvements and One Stop Shop efforts.
  - ◆ Supporting Skills Enhancement Programs for the front counter staff.
  - ◆ Developing measures to ascertain customer satisfaction.
- Involve citizens in Whatcom County decisions by:
  - ◆ Developing a higher standard of public outreach for all county/capital expenditure programs.
  - ◆ Developing annual reports to the Planning Commission per state law on shorelines and on development trends in the county.
- Ensure compliance with federal and state laws including:
  - ◆ Growth Management Act RCW 36.70A.
  - ◆ Compliance with the annual update provisions.
  - ◆ Compliance with the seven year update provisions.
  - ◆ Shoreline Management Act RCW 90.58.
  - ◆ Compliance with the updating provisions.
- ◆ Watershed Management Act RCW 90.82.
- Provide for greater harmony between the natural, man-made and human environments by:
  - ◆ Encouraging a high level of interdepartmental cooperation.
  - ◆ Encouraging ongoing dialogue between Whatcom County cities and the county.
  - ◆ Coordinating natural resource based issues consistent with the Whatcom County Comprehensive Plan and Charter including coordination in Lake Whatcom, Lake Samish, Drayton Harbor and Birch Bay watersheds for special district considerations (such as shellfish).
  - ◆ Promoting adequate parks, open spaces, recreation and cultural resources.
  - ◆ Implementing the Whatcom County Comprehensive Plan for Open Space Planning Goals and Objectives through PDR/TDR/Covenants and other means.
  - ◆ Creating wetland banking opportunities.
- Coordination/Project Review:
  - ◆ Working with the Bicycle and Pedestrian Advisory Committee coordinating bike/pedestrian and transportation improvements.
  - ◆ Working with the Parks and Recreation and Open Space Planning group and coordinating associated improvements.
- Support a healthy economic base by:
  - ◆ Coordinating implementation of the Whatcom County Community Economic Development Strategy (CEDs).

Objectives continued

- ◆ Ensuring that Whatcom County has an adequate land supply to encourage appropriate economic development.
- ◆ Promoting the economic health of natural resource based industries in the county.
- ◆ Supporting rural based business needs.
- ◆ Promoting conservation of the area's natural resources including shorelines and critical areas.
- ◆ Implementing Competitiveness Council recommendations.
- Preserve and enhance unincorporated county neighborhoods and housing choices by:
  - ◆ Working with the Columbia Valley neighborhood to ensure safety and health codes are being followed.
  - ◆ Coordinating more closely with rural housing providers in rural subarea planning districts including the Foothills, Birch Bay, Point Roberts, and Lummi Island.
  - ◆ Working with Foothills to develop a rural employment and training center within the context of a small town planning effort.
- Seek creative solutions to regional planning problems/opportunities by:
  - ◆ Participating on the Council of Government's Regional Transportation Planning Organization.
  - ◆ Continuing to coordinate with Whatcom County cities.
  - ◆ Participating in Regional Economic Development summits and solutions.
- Prepare and administer fiscally responsible budgets by:

- ◆ Augmenting the existing budget through grants.
- ◆ Developing and testing new county programs on a small/pilot project scale.
- ◆ Improving coordination efforts between federal, state and Whatcom County agencies to deliver services to the community.
- ◆ Accurately evaluating community-wide trends through the assessment of census data, economic data/analyses building permit data and other relevant information as it becomes available.

Building Services

- Implement required services, including plan checks, inspections, and fire services, with courtesy, compassion and professionalism.
- Achieve 24-hour response to inspection requests.
- Complete development of the Permit Center, keeping customer service the number one objective.
- Implement generalist concept of Permit Center.
- Create user friendly records center.
- Reduce redundancy in permit process.
- Create updated agreement with Sheriff's Office for arson investigations.
- Process plan reviews to meet or exceed the following time frame (from date first routed to plan check area):
  - ◆ New SFR's - 2 - 3 weeks
  - ◆ Master Plan SFR's - 3 days
  - ◆ Small Commercial Projects 2 weeks
  - ◆ Large Commercial Projects 4 weeks

## Objectives continued

- Update shared program with Northwest Clean Air Agency (NWCAA) for open burning program.
- Implement regional leadership in building, fire, life and safety.
- Refine written policies and procedures for division.

### Land Use

- Provide and maintain informational brochures for each area and service provided by the Land Use Division. The brochures will explain the basic services and review offered by the Land Use Division and the Natural Resource Section.
- Establish the Natural Resource Section which will perform all Natural Resource reviews including: Wetlands, Lake and Stream Management, Aquifer Recharge Area Review, Surface Mining and Geological Hazard Area Reviews (including alluvial fan hazard areas), Agricultural Nutrient Enforcement, and State Environmental Policy Act Reviews and Determinations.
- Complete zoning and environmental reviews within three days of submittal of the required information.
- Continue to provide training opportunities consistent with Skills Enhancement Program for PDS as developed with the Human Resources Office.
- Finalize the comprehensive Compliance Ordinance to ensure consistent and effective

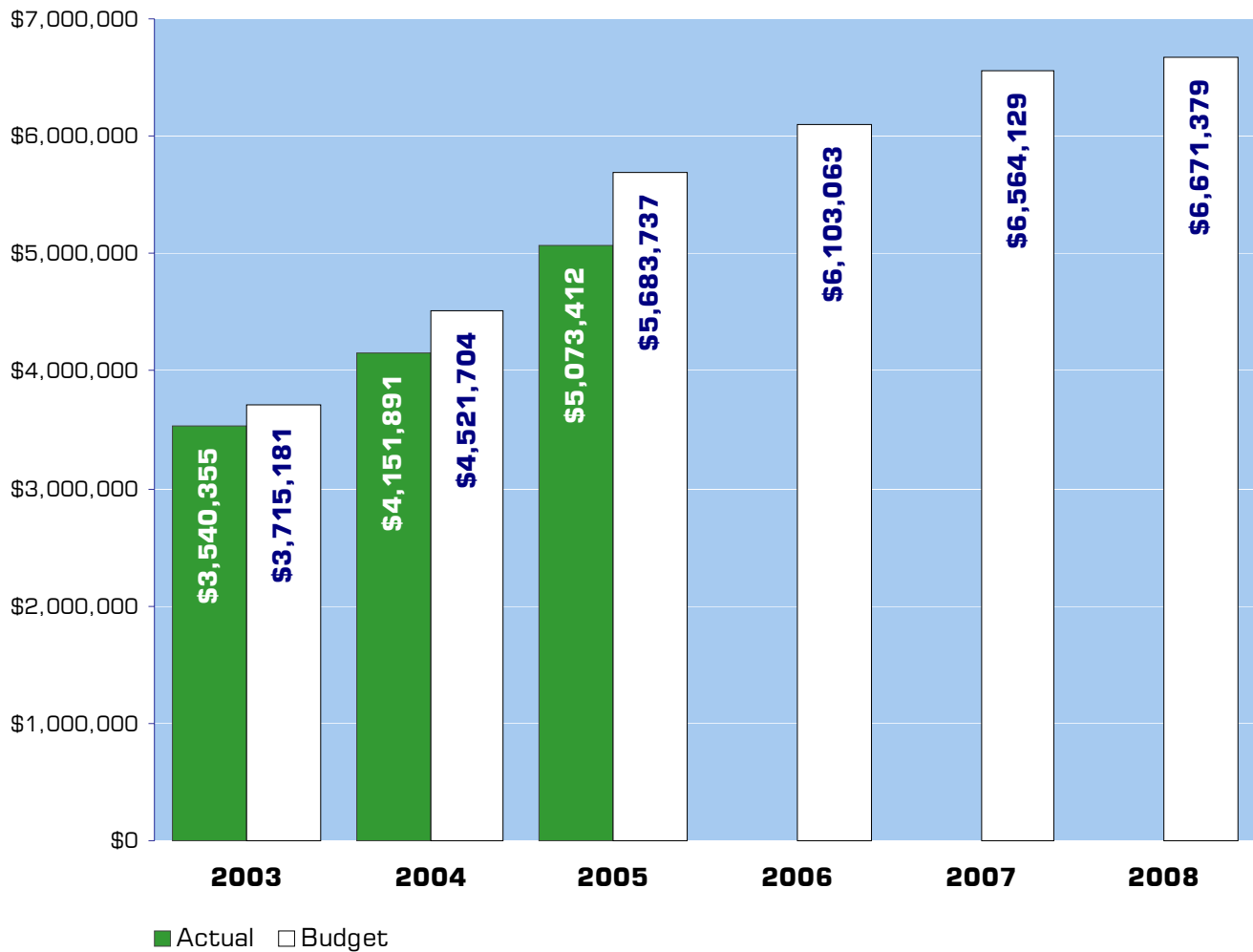
enforcement of the Universal Building Code, Land Use Regulation and Natural Resource Protection Codes.

- Update the Land Use web pages on a regular basis to assist the public in understanding the processes and regulations regarding land use.

### Planning

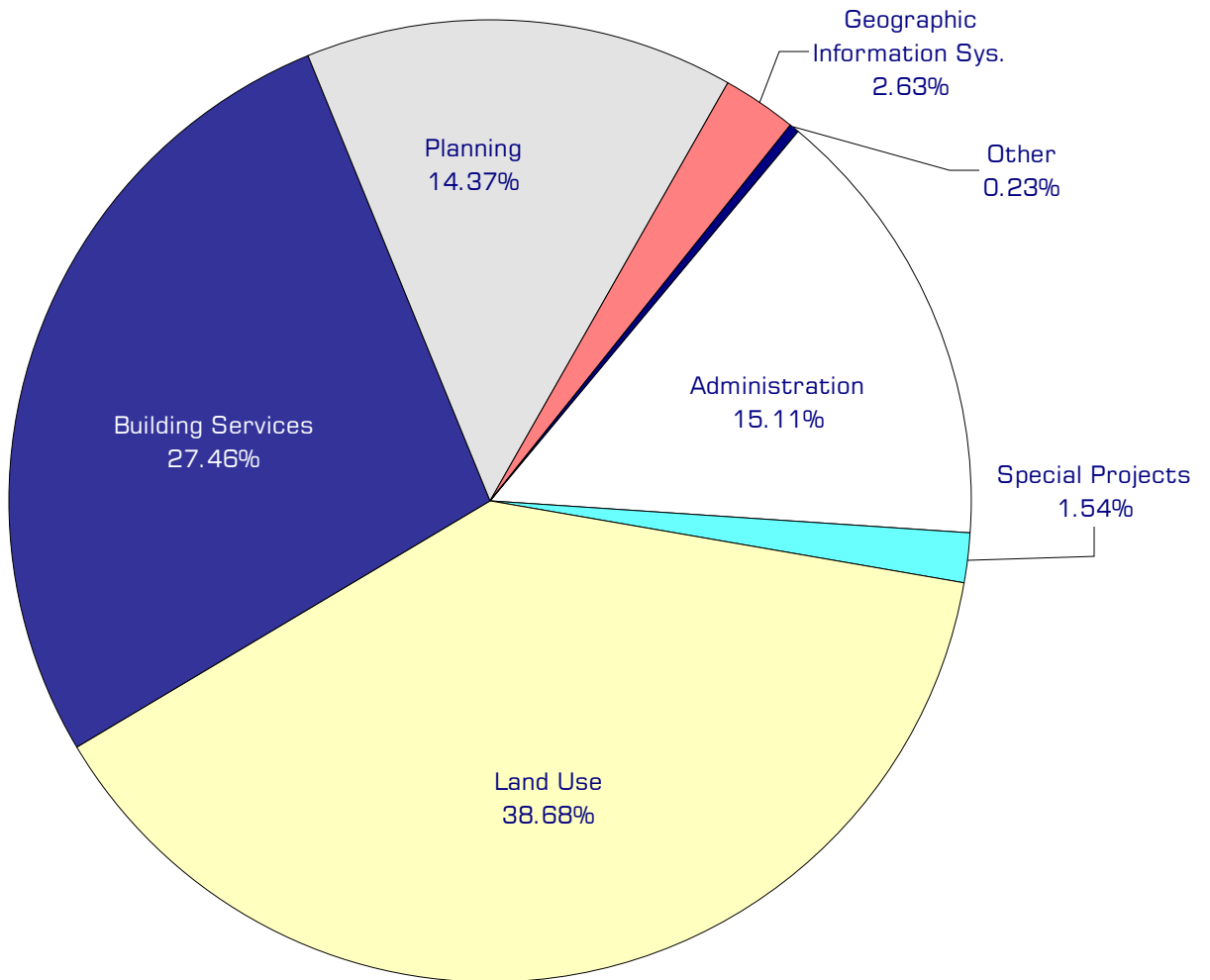
- Comply with the Growth Management Act.
- Assist in the development and implementation of a strategy to gain compliance with GMA requirement for concurrency.
- Work with stakeholders to develop and implement a program to preserve prime agricultural lands in Whatcom County.
- Perform mandated current planning functions including review of rezones, open space, Urban Growth Area amendments, annexation requests, zoning and subdivision code updates, comprehensive plan amendments, forest practice applications, and public information on land use questions.
- Coordinate Capital Facilities planning.
- Work with stakeholders to update two subarea plans.
- Work with the community groups and advisory boards to implement high priority action items in the Whatcom County Comprehensive Plan.
- Work with stakeholders, other communities, regional organizations and other county departments to develop and implement regional approach to land use and transportation planning.

## Expenditure Trends



NOTE: Capital expenditures and residual equity transfers are not shown to more accurately reflect ongoing operational costs.

## 2007-2008 Budget by Program



*NOTE: Capital expenditures and residual equity transfers are not shown to more accurately reflect ongoing operational costs.*

# Program Summary

	Actual 2003	Actual 2004	Actual 2005	Budget 2006	Budget 2007	Budget 2008
<b>OPERATIONS</b>						
<b>General Fund</b>						
800 Planning & Develop. Admin	297,432	602,808	670,122	780,871	969,874	1,011,477
815 Special Projects	-	42,577	121,267	338,946	100,447	101,327
820 Land Use Services	1,150,799	1,082,608	1,409,623	1,943,069	2,418,175	2,653,856
830 Building Services	1,111,378	1,150,355	1,442,963	1,576,584	1,768,268	1,832,730
836/837 NWCAA	-	-	-	18,900	-	-
841 PDS Permit Center	-	-	-	-	70,022	50,993
2500 Planning	689,432	749,259	752,847	932,095	1,052,154	831,901
2510 GIS	145,625	141,950	153,038	164,027	170,189	174,095
2525 Concurrency Mgmt	-	-	-	100,000	-	-
2541 CTED Grant	-	-	-	10,000	-	-
2561 GMA Update Grant	56,710	74,974	30,226	-	-	-
2565 CZM Grant	19,688	10,011	-	-	-	-
2567 Birch Bay Community	-	-	-	35,000	-	-
2570 Purchase Develop Rights	10,735	4,302	14,028	21,000	15,000	15,000
2572 GeoEngineers Contract	31,545	-	-	-	-	-
2573 Lummi Island Contract	27,011	104	-	-	-	-
2575 CDBG Grants	-	24,000	-	-	-	-
2576 DOE Shoreline Permit Grant	-	268,943	419,078	-	-	-
2578 WA St Association	-	-	35,500	-	-	-
2579 Marine Resources	-	-	24,720	23,955	-	-
2581 Doe WRIA Grant	-	-	-	158,616	-	-
<i>Total Planning &amp; Develop Operations</i>	<b>3,540,355</b>	<b>4,151,891</b>	<b>5,073,412</b>	<b>6,103,063</b>	<b>6,564,129</b>	<b>6,671,379</b>
<b>CAPITAL</b>						
<b>General Fund</b>						
800 Planning & Develop. Admin	38,086	17,657	6,649	-	-	-
820 Land Use Services	-	1,324	-	-	-	-
830 Building Services	4,756	2,984	-	-	-	-
836/837 NWCAA	-	-	-	35,000	-	-
841 PDS Permit Center	-	-	-	-	32,640	-
2500 Planning	5,898	2,407	-	-	-	-
2510 GIS	-	-	7,215	-	-	-
<i>Total Planning &amp; Develop. Capital</i>	<b>48,740</b>	<b>24,372</b>	<b>13,864</b>	<b>35,000</b>	<b>32,640</b>	<b>-</b>

continued on next page

Program Summary continued

	Actual 2003	Actual 2004	Actual 2005	Budget 2006	Budget 2007	Budget 2008
<b>TRANSFERS</b>						
<b>General Fund</b>						
800 Planning & Develop. Admin	-	30,000	33,968	39,483	66,429	62,974
815 Special Projects	-	-	-	7,347	7,775	8,251
820 Land Use Services	-	20,000	4,000	48,000	22,500	-
830 Building Services	-	-	-	72,000	-	-
2500 Planning	2,500	-	3,000	24,000	-	-
<i>Total Planning &amp; Develop. Transfers</i>	2,500	50,000	40,968	190,830	96,704	71,225
<b>TOTAL PLAN &amp; DEVELOPMENT</b>	3,591,595	4,226,263	5,128,244	6,328,893	6,693,473	6,742,604
<i>Percent Change from Previous Year</i>	11.4%	17.7%	21.3%	23.4%	5.8%	0.7%

## 2007-2008 Funding Sources

	2007	2008
Land Use Permits	861,613	922,644
Plan Check Fees	960,818	984,840
Building Permits	1,844,704	1,881,598
Intergovernmental Revenue	15,568	18,380
Other Charges for Service	384,674	430,255
Sub-Division Reviews	970,832	990,248
General Fund	1,488,405	1,405,650
Miscellaneous Revenue	37,515	37,764
<b>Total Funding</b>	<b>6,564,129</b>	<b>6,671,379</b>

### Land Use Permits

Fees collected for site plan reviews, surface mining, critical areas ordinance, land disturbance, and various other land-use permits.

### Plan Check Fees

Fees collected for the review of construction plans.

### Building Permits

The department receives revenue from a variety of building related permits. The authority for the collection of these fees is based upon the Uniform Building Code and related codes and county ordinance.

### Intergovernmental Revenue

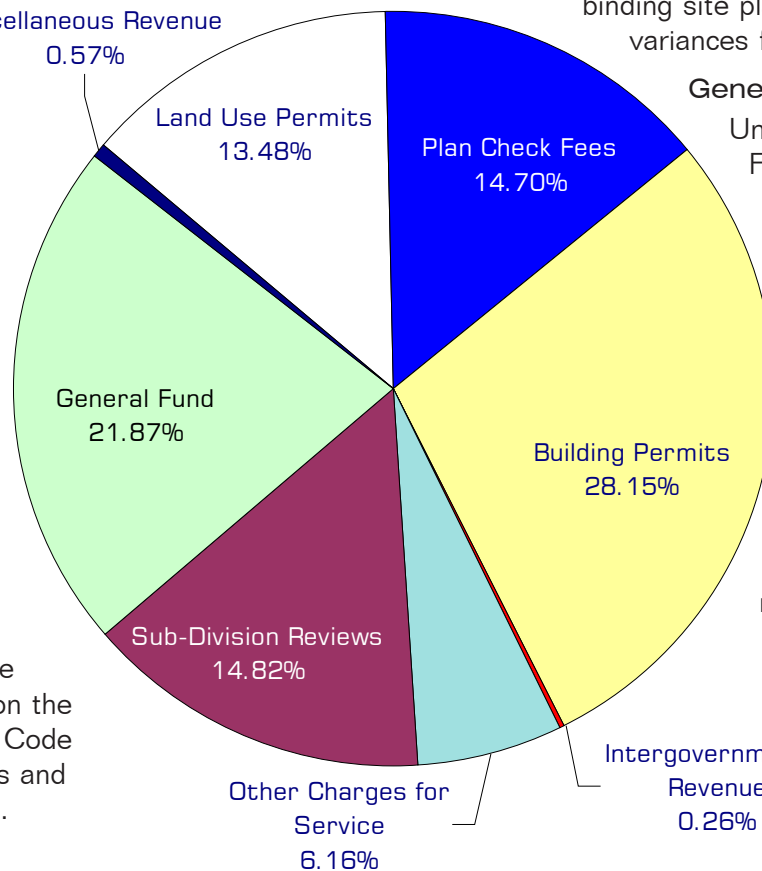
PDS receives a small amount of support from the Northwest Air Pollution Authority in support of the county's burn program.

### Other Charges for Service

Planning and Development Services collects fees for annexation reviews, reviews for compliance with the Critical Area Ordinance, land clearing permits and surface mining fees.

### Subdivision Reviews

Fees collected for long and short plat reviews, major and planned unit development reviews, binding site plans, exemptions, and variances from subdivision rules.



### General Fund

Undedicated General Fund resources.

### Miscellaneous Revenue

Revenue from civil fines imposed due to permit violations, and operating transfer from Flood for permit review services, and small amounts of otherwise unclassified revenues.

## Performance / Activity Measures

	Actual 2003	Actual 2004	Actual 2005	Projected 2006	Projected 2007	Projected 2008
Permit Application - Commercial	154	158	205	184	210	225
Permit Application - Detached Building	561	506	475	490	530	550
Permit Application - Mobile Homes	216	164	165	158	170	175
Permit Application - New Single Family Residence	949	1,194	1,205	980	1,020	1,350
Permit Application - Single Fam. Addition/Remodel	310	330	397	398	480	550
Permit Application - Mechanical/Plumbing	844	800	607	410	420	450
Permit Application - Fire Alarm/Sprinkler System	30	26	26	58	35	40
Permit Application - Fire Commercial Ground Tanks	18	12	9	12	10	10
Permit Application - Burn Permits	316	380	316	480	500	525
Master Plan Review	24	22	15	12	10	10
Revised Building Plan Review	96	288	76	182	225	260
Fire Plan Review	400	864	511	594	550	600
Final Review	1,993	1,790	2,435	2,074	2,500	2,700
Fire Plan Inspections	61	68	393	616	640	660
Burn Inspections	584	800	552	656	650	680
Fire Safety Inspections	446	540	303	550	550	610
Building Permit Inspections	15,416	15,706	18,802	18,268	19,500	20,000
Commercial Pre-Application Screenings	70	88	98	64	110	130
BS Special Meetings	138	130	51	54	60	70
Zoning Application - Administrative	48	48	49	62	70	100
Zoning Application - Conditional Use	28	23	31	36	40	48
Zoning Application - Non Conforming Use	7	12	11	6	18	25
Zoning Application - Zoning Variance	6	6	8	8	10	10
Land Disturbance Review	2,428	2,600	1,248	2,328	2,550	2,700
Fill & Grade/Clearing Review	291	282	128	456	600	675
Shoreline Conditional Use Permit	12	12	4	10	15	25
Shoreline Substantial Development Permit	13	24	13	30	45	58
Shoreline Variance Permit	7	7	7	4	6	7
Shoreline Exemption Permit	331	200	58	120	150	200
Subdivision Long Plat	5	6	9	16	25	30
Subdivision Binding Site Plan	1	2	4	-	5	7
Subdivision Major Development	-	-	-	-	2	2
Subdivision Planned Unit Development	2	2	9	6	10	12
Subdivision Short Plat	44	62	49	376	70	80

*continued on next page*

Performance / Activity Measures continued

	Actual 2003	Actual 2004	Actual 2005	Projected 2006	Projected 2007	Projected 2008
Enforcement Land Use/Building	534	1,164	1,525	3,346	3,500	3,700
Enforcement Land Use Appeal	16	40	11	44	75	100
Zoning Review	7,602	7,916	2,032	1,850	2,300	2,500
NR Wetland Site Review	1,067	1,144	1,293	1,412	1,650	1,780
NR Geological Hazard Review	528	500	341	586	750	880
NR Endangered Species Review	59	50	38	116	140	170
NR Watershed Review Office Review	470	480	1,097	1,050	1,200	1,300
NR SEPA Review	524	446	209	204	300	380
NR Wetlands Site Inspection	535	550	486	704	850	950
NR Geological Hazard Inspection	49	40	58	34	100	180
NR Special District - Watershed Inspection, Site Inspection	387	400	353	184	250	320
NR Shoreline Inspection	15	24	10	6	35	45
NR Enforcement Inspection	651	1,000	307	428	500	650
Critical Area Mitigation Plan	100	100	111	124	160	200
LU Pre-application meeting	35	44	98	64	150	180

# Expenditures Summary

	Actual 2003	Actual 2004	Actual 2005	Budget 2006	Budget 2007	Budget 2008
<b>GENERAL FUND</b>						
800 Administration						
Salaries & Wages	129,735	205,343	207,766	227,791	331,605	342,994
Benefits	27,875	49,828	49,316	68,291	103,119	113,966
Supplies	1,151	7,802	5,099	5,359	2,850	2,850
Other Services & Charges	138,671	339,835	407,941	479,430	532,300	551,667
Capital Outlay	38,086	17,657	6,649	-	-	-
Operating Transfer	-	30,000	33,968	39,483	66,429	62,974
<i>Total Administration</i>	<i>335,518</i>	<i>650,465</i>	<i>710,739</i>	<i>820,354</i>	<i>1,036,303</i>	<i>1,074,451</i>
<i>Percent Change from Previous Year</i>	<i>16.6%</i>	<i>93.9%</i>	<i>9.3%</i>	<i>15.4%</i>	<i>26.3%</i>	<i>3.7%</i>
815 Special Projects						
Salaries & Wages	-	33,938	68,836	69,384	71,484	71,484
Benefits	-	7,497	16,066	17,700	20,922	22,861
Supplies	-	228	577	805	1,250	600
Other Services & Charges	-	914	35,788	251,057	6,791	6,382
Operating Transfer	-	-	-	7,347	7,775	8,251
<i>Total Special Projects</i>	<i>-</i>	<i>42,577</i>	<i>121,267</i>	<i>346,293</i>	<i>108,222</i>	<i>109,578</i>
<i>Percent Change from Previous Year</i>	<i>0.0%</i>	<i>0.0%</i>	<i>184.8%</i>	<i>185.6%</i>	<i>-68.7%</i>	<i>1.3%</i>
820 Land Use						
Salaries & Wages	778,334	781,738	1,003,309	1,375,377	1,625,612	1,696,774
Benefits	209,056	208,917	287,842	441,374	581,270	650,172
Supplies	12,333	13,342	45,206	16,480	13,033	10,900
Other Services & Charges	151,076	78,611	73,266	109,838	198,260	296,010
Capital Outlay	-	1,324	-	-	-	-
Residual Equity Transfer	-	20,000	4,000	48,000	22,500	-
<i>Total Land Use</i>	<i>1,150,799</i>	<i>1,103,932</i>	<i>1,413,623</i>	<i>1,991,069</i>	<i>2,440,675</i>	<i>2,653,856</i>
<i>Percent Change from Previous Year</i>	<i>12.3%</i>	<i>-4.1%</i>	<i>28.1%</i>	<i>40.8%</i>	<i>22.6%</i>	<i>8.7%</i>
830 Building Services						
Salaries & Wages	781,843	818,231	1,012,347	1,141,879	1,206,166	1,237,645
Benefits	207,890	228,454	299,950	378,054	443,590	488,055
Supplies	18,598	27,440	40,719	27,126	25,350	13,150
Other Services & Charges	103,047	76,230	89,947	29,525	93,162	93,880
Capital Outlay	4,756	2,984	-	-	-	-
Residual Equity Transfer	-	-	-	72,000	-	-
<i>Total Building Services</i>	<i>1,116,134</i>	<i>1,153,339</i>	<i>1,442,963</i>	<i>1,648,584</i>	<i>1,768,268</i>	<i>1,832,730</i>
<i>Percent Change from Previous Year</i>	<i>16.7%</i>	<i>3.3%</i>	<i>25.1%</i>	<i>14.2%</i>	<i>7.3%</i>	<i>3.6%</i>

continued on next page

Expenditures Summary continued

	Actual 2003	Actual 2004	Actual 2005	Budget 2006	Budget 2007	Budget 2008
<b>836/837 NWCAA</b>						
Supplies	-	-	-	11,700	-	-
Other Services & Charges	-	-	-	7,200	-	-
Capital Outlay	-	-	-	35,000	-	-
<i>Total NWCAA</i>	-	-	-	53,900	-	-
<i>Percent Change from Previous Year</i>	0.0%	0.0%	0.0%	0.0%	-100.0%	0.0%
<b>841 PDS - Permit Center</b>						
Supplies	-	-	-	-	28,550	7,550
Other Services & Charges	-	-	-	-	41,472	43,443
Capital Outlay	-	-	-	-	32,640	0
<i>Total NWCAA</i>	-	-	-	-	102,662	50,993
<i>Percent Change from Previous Year</i>	0.0%	0.0%	0.0%	0.0%	0.0%	-50.3%
<b>2500 Planning</b>						
Salaries & Wages	464,758	515,332	531,562	545,755	528,761	495,959
Benefits	117,941	136,714	136,112	169,295	194,173	182,822
Supplies	26,410	25,869	29,394	28,595	23,400	20,250
Other Services & Charges	80,323	71,344	55,779	188,450	305,820	132,870
Capital Outlay	5,898	2,407	-	-	-	-
Residual Equity Transfer	2,500	-	3,000	24,000	-	-
<i>Total Planning</i>	697,830	751,666	755,847	956,095	1,052,154	831,901
<i>Percent Change from Previous Year</i>	30.1%	7.7%	0.6%	26.5%	10.0%	-20.9%
<b>2510 GIS</b>						
Salaries & Wages	102,943	100,851	108,273	113,923	118,084	118,204
Benefits	26,349	25,957	28,682	32,699	38,205	41,641
Supplies	4,845	1,845	3,313	4,100	1,500	1,550
Other Services & Charges	11,488	13,297	12,770	13,305	12,400	12,700
Capital Outlay	-	-	7,215	-	-	-
<i>Total GIS</i>	145,625	141,950	160,253	164,027	170,189	174,095
<i>Percent Change from Previous Year</i>	14.8%	-2.5%	12.9%	2.4%	3.8%	2.3%
<b>2525 Concurrency Mgmt</b>						
Other Services & Charges	-	-	-	100,000	-	-
<i>Total Concurrency Mgmt</i>	-	-	-	100,000	-	-
<i>Percent Change from Previous Year</i>	0.0%	0.0%	0.0%	0%	-100%	0.0%
<b>2541 CTED Grant</b>						
Other Services & Charges	-	-	-	10,000	-	-
<i>Total CTED Grant</i>	-	-	-	10,000	-	-
<i>Percent Change from Previous Year</i>	0.0%	0.0%	0.0%	0.0%	-100%	0.0%
<b>2561 GMA Update Grant</b>						
Other Services & Charges	45,059	74,974	30,226	-	-	-
Intergov Services & Charge	11,651	-	-	-	-	-
<i>Total GMA Update Grant</i>	56,710	74,974	30,226	-	-	-
<i>Percent Change from Previous Year</i>	79.8%	32.2%	-59.7%	-100.0%	0.0%	0.0%

continued on next page

Expenditures Summary continued

	Actual 2003	Actual 2004	Actual 2005	Budget 2006	Budget 2007	Budget 2008
2565 CZM Grant						
Salaries & Wages	14,967	-	-	-	-	-
Supplies	4,721	4,016	-	-	-	-
Other Services & Charges	-	5,995	-	-	-	-
<i>Total CZM Grant</i>	19,688	10,011	-	-	-	-
<i>Percent Change from Previous Year</i>	0.0%	-49.2%	-100.0%	0.0%	0.0%	0.0%
2567 Birch Bay Community						
Other Services & Charges	-	-	-	35,000	-	-
<i>Total Birch Bay Community</i>	-	-	-	35,000	-	-
<i>Percent Change from Previous Year</i>	-100.0%	0.0%	0.0%	0.0%	-100.0%	0.0%
2570 Purchase Develop Rights						
Other Services & Charges	10,735	4,302	14,028	21,000	15,000	15,000
<i>Total Purchase Develop Rights</i>	10,735	4,302	14,028	21,000	15,000	15,000
<i>Percent Change from Previous Year</i>	-44.8%	-59.9%	226.1%	49.7%	-28.6%	0.0%
2572 GeoEngineers Contract						
Other Services & Charges	31,545	-	-	-	-	-
<i>Total GeoEngineers Contract</i>	31,545	-	-	-	-	-
<i>Percent Change from Previous Year</i>	273.1%	-100.0%	0.0%	0.0%	0.0%	0.0%
2573 Lummi Island Contract						
Other Services & Charges	27,011	104	-	-	-	-
<i>Total Lummi Island Contract</i>	27,011	104	-	-	-	-
<i>Percent Change from Previous Year</i>	242.6%	-99.6%	-100.0%	0.0%	0.0%	0.0%
2575 CDBG Grants						
Other Services & Charges	-	24,000	-	-	-	-
<i>Total CDBG Grants</i>	-	24,000	-	-	-	-
<i>Percent Change from Previous Year</i>	0.0%	0.0%	-100.0%	0.0%	0.0%	0.0%
2576 DOE Shoreline Permit						
Salaries & Wages	-	60,417	29,325	-	-	-
Benefits	-	14,474	15,925	-	-	-
Other Services & Charges	-	194,052	373,828	-	-	-
<i>Total DOE Shoreline Permit</i>	0	268,943	419,078	0	0	0
<i>Percent Change from Previous Year</i>	0.0%	0.0%	55.8%	-100.0%	0.0%	0.0%
2578 WA St Association						
Salaries & Wages	-	-	20,203	-	-	-
Other Services & Charges	-	-	15,297	-	-	-
<i>Total WA St Association</i>	-	-	35,500	-	-	-
<i>Percent Change from Previous Year</i>	0.0%	0.0%	0.0%	-100.0%	0.0%	0.0%
2579 Marine Resources						
Other Services & Charges	-	-	24,720	23,955	-	-
<i>Total Marine Resources</i>	-	-	24,720	23,955	-	-
<i>Percent Change from Previous Year</i>	0.0%	0.0%	0.0%	-3.1%	-100.0%	0.0%

continued on next page

Expenditures Summary continued

	Actual 2003	Actual 2004	Actual 2005	Budget 2006	Budget 2007	Budget 2008
2581 DOE WRIA Grant						
Salaries & Wages	-	-	-	30,665	-	-
Benefits	-	-	-	11,971	-	-
Supplies	-	-	-	11,180	-	-
Other Services & Charges	-	-	-	104,800	-	-
<i>Total DOE Shoreline Permit</i>	-	-	-	158,616	-	-
<i>Percent Change from Previous Year</i>	0.0%	0.0%	0.0%	0.0%	-100.0%	0.0%
<b>TOTAL PLAN &amp; DEVELOPMENT</b>	3,591,595	4,226,263	5,128,244	6,328,893	6,693,473	6,742,604
<i>Percent Change from Previous Year</i>	11.4%	17.7%	21.3%	23.4%	5.8%	0.7%

## Services

### **Archeological Reviews**

Review of archaeological site inquiries for Point Roberts property owners, realtors and contractors. Provide archaeological site review using confidential GIS information.

### **Building Reviews**

Review and enforcement of mandated zoning and life safety codes.

### **Code Compliance**

Education and enforcement of land use, development, natural resource development, natural resources and building regulations.

### **Land Disturbance**

Reviews for approval of land clearing, fill, grading, erosion control and forest practices.

### **Natural Resources Program**

Review and approval of development activity within or near regulated water resource protection areas and critical areas. Review and approval of regulated surface mines. Protection of agricultural land and forests, and update of regulations to comply with state and federal requirements.

### **Open Space**

Develop and administer programs relating to conservation of open space, including open space tax programs, purchase or transfer of development rights, and acquisition of land or easements.

### **Permit Coordination**

Permit services include development permit intake, permit routing and tracking, permit issuance and research at the request of the public or staff, including cashiering.

### **Plan Review**

Provide non-structural and structural review of residential and commercial plans, including manufactured structures.

### **SEPA Reviews**

Review of threshold determination on all projects, public and private subject to Whatcom County jurisdiction and which do not qualify for a SEPA exemption. Provides supervision of writing of Environmental Impact Statements.

### **Shoreline Program**

Review and permitting for all development proposals within 200 feet of the Ordinary High Water Mark of regulated shorelines, including periodic update of regulations and data. Complete mandated update of Shoreline Management Program.

### **Subdivision Review**

Review and approve/recommend short plat/long plat applications and other permits and approvals authorized by Title 21.

Services continued

**Zoning Administration**

Respond to citizen inquiries; review and make recommendations regarding approval of permits authorized under the zoning code. Process citizen applications, Council and Planning Commission request for changes to zoning maps and text.

**Data/Records**

Specialized database development, software support and maintenance of system for permit tracking, recording inspection results, land use and environmental data, filing and records retention.

**Fire**

Review of permits, plat applications and provides on-site inspections including new construction, fire alarm and sprinkler system installations, fire extinguisher placement, emergency exiting, storage and handling of hazardous materials. Oversee outdoor burn program. Arson investigation.

**Inspections/Life Safety**

Field inspection and enforcement of mandated zoning and life safety codes.

**Comprehensive Plan Revisions**

Processes applications, Council and Planning Commission requests for changes to the Comprehensive Plan, map and text, Subarea Plans, Economic Development and Capital Facilities Plan.