

# Juvenile Court Administration

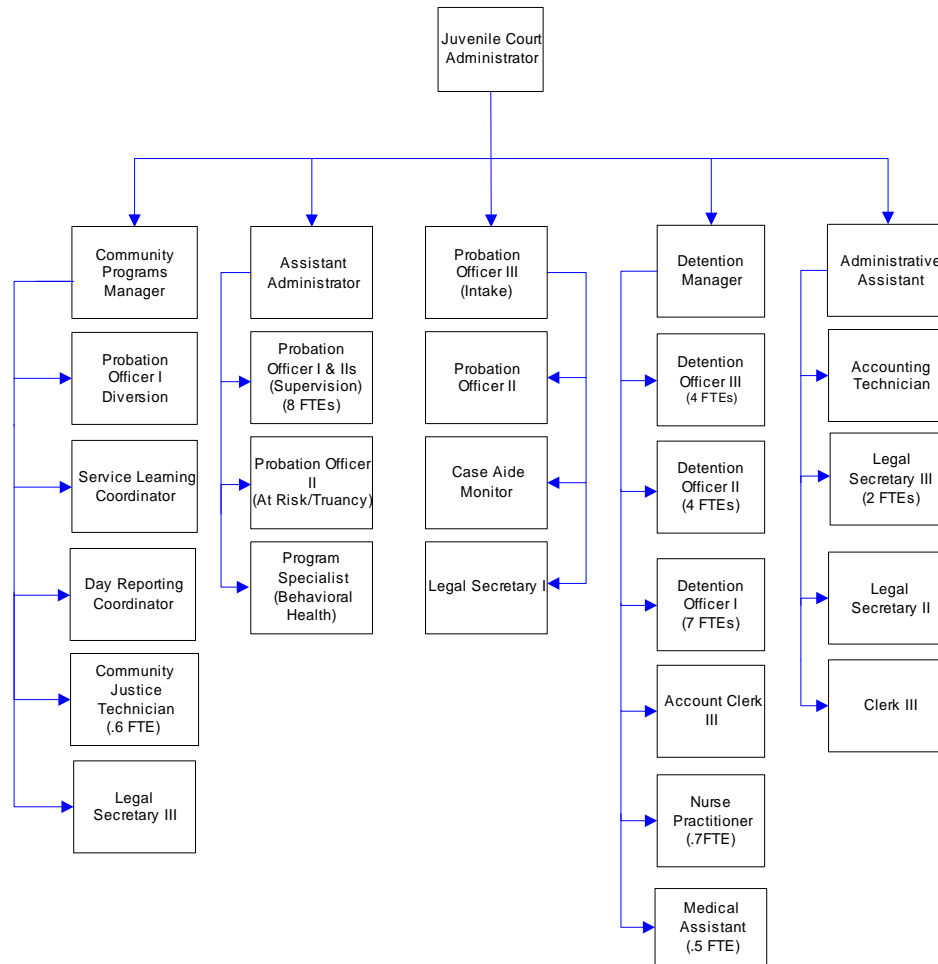
Through the Juvenile Court, Detention Center and a number of special programs, this department provides services to assist young offenders with personal and/or environmental problems which get them into trouble with the law. The Juvenile Detention Facility is located on the 6th floor of the courthouse. (Visiting hours are limited. Call for schedule.)

## FTE's for this department

Year	2003	2004	2005	*2006	*2007	*2008
FTE	45.00	45.10	45.80	45.80	45.80	45.80

*\*budget*

The chart below shows the organizational structure for 2007 only.



## Mission & Objectives

### Mission

Whatcom County Juvenile Court Administration strives to be a catalyst for developing safe communities and healthy youth and families by:

- Holding offenders accountable for their actions.
- Establishing and maintaining effective communication with the community around youth at risk in order to achieve cooperation in making appropriate decisions and receive support in developing and using services and resources.
- Providing a range of community programs and services to meet the individual needs of the youth we serve. This includes educational support, vocational training, recreation, mental health and specialized programs such as anger management, conflict resolution, sex offender treatment and substance abuse treatment.
- Involving the victim, family and community as preferred resources and using a case management model to provide results-based and outcome-driven interventions and practices.
- Utilizing the Washington Juvenile Court Administrators Risk Assessment tool to identify and address the needs of juvenile offenders while maintaining public safety at all times.
- Maintaining a safe and secure detention facility that will provide graduated sanctions for juvenile offenders and public safety for victims and the community.
- Obtaining and sustaining sufficient resources.

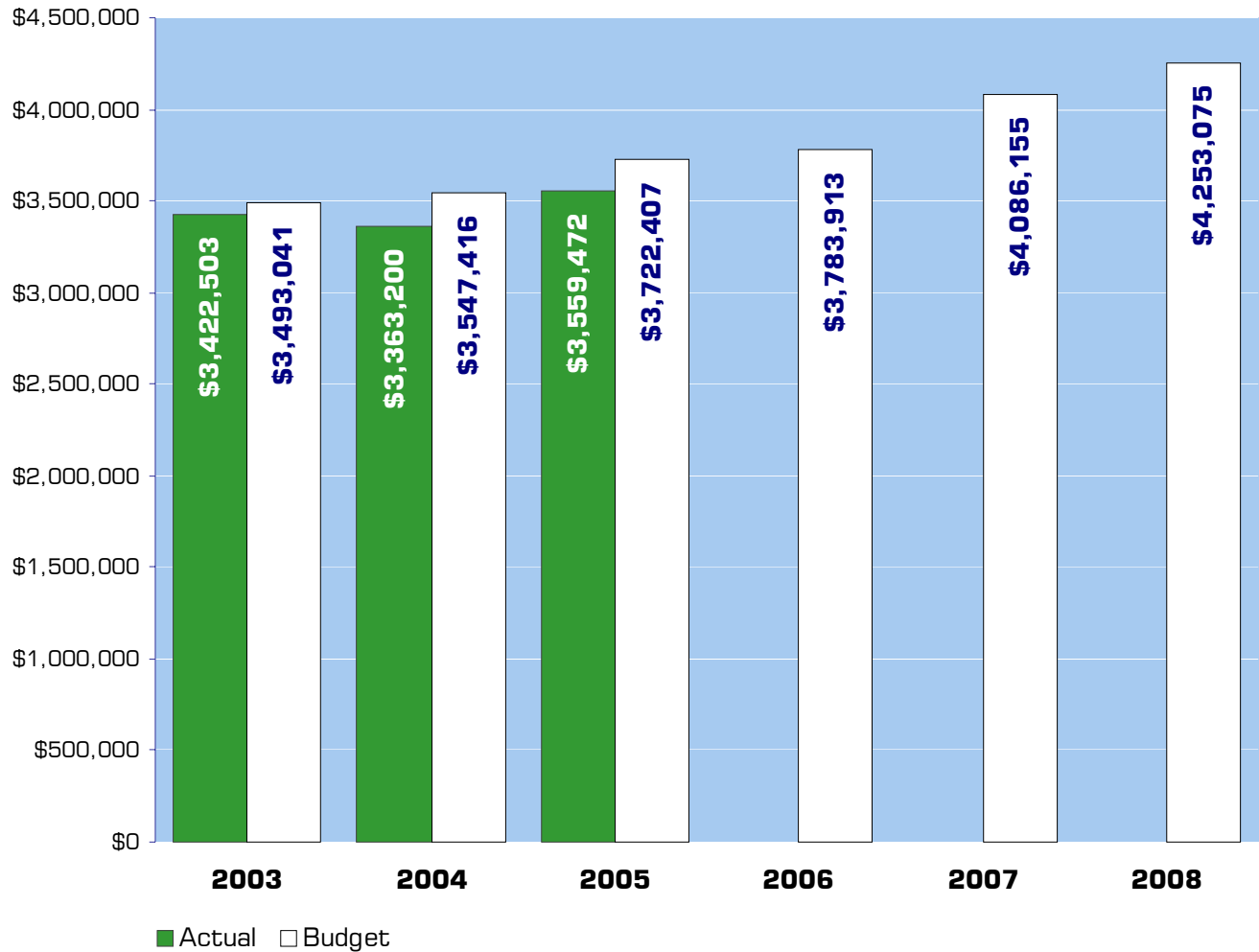
- Promoting growth and development of all juvenile justice professionals.
- Providing a safe, secure environment for staff and juveniles.

### Objectives

#### Administration

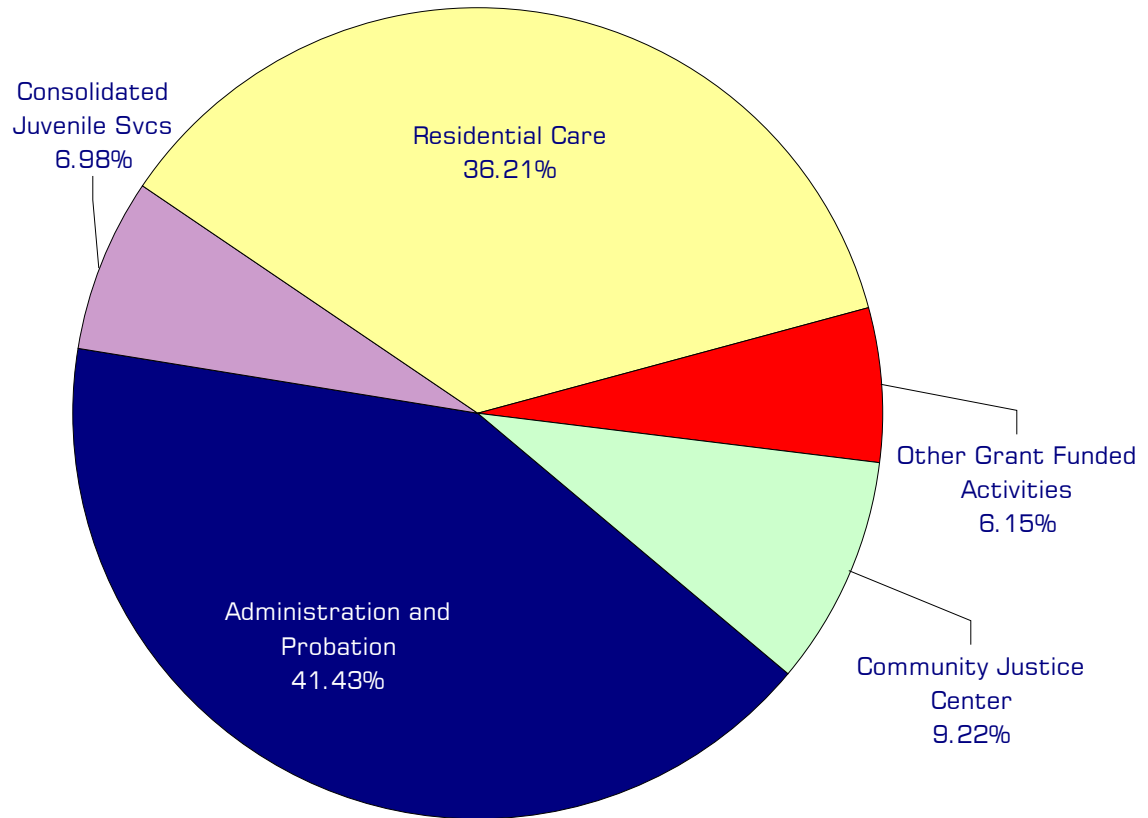
- Increase collection of legal financial obligations and restitution paid to victims from \$56,000 in 2006 to \$60,000 in 2007 and 2008.
- Maintain the average length of stay in detention at 8 days in 2007 and 2008 by increasing utilization of alternative sanctions.
- Reduce the number of youth issued Failure to Appear (FTA) warrants from an estimated 245 in 2006 to 230 in 2007 and 2008.
- Reduce the number of youth issued probation violation warrants from an estimated 250 to 230 in 2007 and 2008.
- Maintain work experience program at the Juvenile Community Justice Center to increase payment of restitution to victims from \$3,000 in 2006 to \$5,000 in 2007 and 2008.
- Increase the number of youth served in the Juvenile Drug Court from 15 in 2006 to 20 in 2007 and 2008.
- Increase the number of youth discharged early from community supervision due to completion of all requirements.
- Increase the amount of revenue for detention parent pay from \$4,000 per year in 2006 to \$6,500 per year in 2007 and 2008.

## Expenditure Trends



*NOTE: Capital expenditures and interfund operating transfers are not shown to more accurately reflect ongoing operational costs.*

## 2007-2008 Budget by Program



*NOTE: Capital expenditures and residual equity transfers are not shown to more accurately reflect ongoing operational costs.*

# Program Summary

	Actual 2003	Actual 2004	Actual 2005	Budget 2006	Budget 2007	Budget 2008
<b>OPERATIONS</b>						
<b>General Fund</b>						
1900 Juvenile Court-Admin	1,187,014	1,347,904	1,419,530	1,561,709	1,694,041	1,761,245
1941 Juvenile Court-Hlth Ch Girls	44,129	24,307	-	-	-	-
1945 Comm Justice Center	157,930	264,746	267,645	363,080	376,897	391,771
1950 Juvenile Court-CJS	308,673	283,310	259,959	256,080	290,425	292,005
1953 Parole Detention	52,759	48,083	44,673	83,166	9,849	9,849
1959 Becca Bill	56,059	64,159	68,426	75,786	81,534	83,360
1961 DSHS	38,948	4,346	1,258	1,750	1,250	1,250
1962 CDDA Grant	58,081	50,693	45,708	25,088	31,930	31,930
1963 CJAA-DSHS Misc	51,790	72,716	62,934	16,617	111,300	113,841
1964 Juvenile Court-Teen Court	33,297	18,500	18,500	18,000	18,500	18,500
1965 GJJAC-JDAI	-	5,319	55,723	25,216	-	-
1970 Residential Care	988,039	1,175,522	1,310,823	1,357,421	1,470,429	1,549,324
1971 Work Crew	101,177	-	-	-	-	-
1980 Medical/Dental	9,766	-	-	-	-	-
1985 Alcoa	27,980	-	-	-	-	-
1990 Facilities	302,344	-	-	-	-	-
1995 DOE Comm Litter Clean	4,517	3,595	4,293	-	-	-
<b>Total Juvenile Court Operations</b>	<b>3,422,503</b>	<b>3,363,200</b>	<b>3,559,472</b>	<b>3,783,913</b>	<b>4,086,155</b>	<b>4,253,075</b>
<b>CAPITAL</b>						
<b>General Fund</b>						
1900 Juvenile Court-Admin	1,385	102,032	-	-	-	-
1970 Residential Care	1,459	-	6,154	-	-	-
<b>Total Juvenile Court Capital</b>	<b>2,844</b>	<b>102,032</b>	<b>6,154</b>	<b>-</b>	<b>-</b>	<b>-</b>
<b>TRANSFERS</b>						
<b>General Fund</b>						
1945 Comm Justice Center	2,763	2,662	1,577	3,000	-	-
<b>Total Juvenile Court Transfers</b>	<b>2,763</b>	<b>2,662</b>	<b>1,577</b>	<b>3,000</b>	<b>-</b>	<b>-</b>
<b>TOTAL JUVENILE COURT ADMIN</b>	<b>3,428,110</b>	<b>3,467,894</b>	<b>3,567,203</b>	<b>3,786,913</b>	<b>4,086,155</b>	<b>4,253,075</b>
<b>Percent Change from Previous Year</b>	<b>1.0%</b>	<b>1.2%</b>	<b>2.9%</b>	<b>6.2%</b>	<b>7.9%</b>	<b>4.1%</b>

continued on next page

## 2007-2008 Funding Sources

	<b>2007</b>	<b>2008</b>
Service Charges & Fees	57,000	57,000
General Fund	3,371,717	3,528,776
Intergovernmental Revenues	635,438	645,299
Miscellaneous Revenues	12,000	12,000
Operating Transfer-Solid Waste	10,000	10,000
<b>Total Funding</b>	<b>4,086,155</b>	<b>4,253,075</b>

### Service Charges & Fees

Juvenile Court rents available detention space to other jurisdictions. The department also charges for copy fees.

### General Fund

Undedicated General Fund resources.

### Operating Transfer - Solid Waste

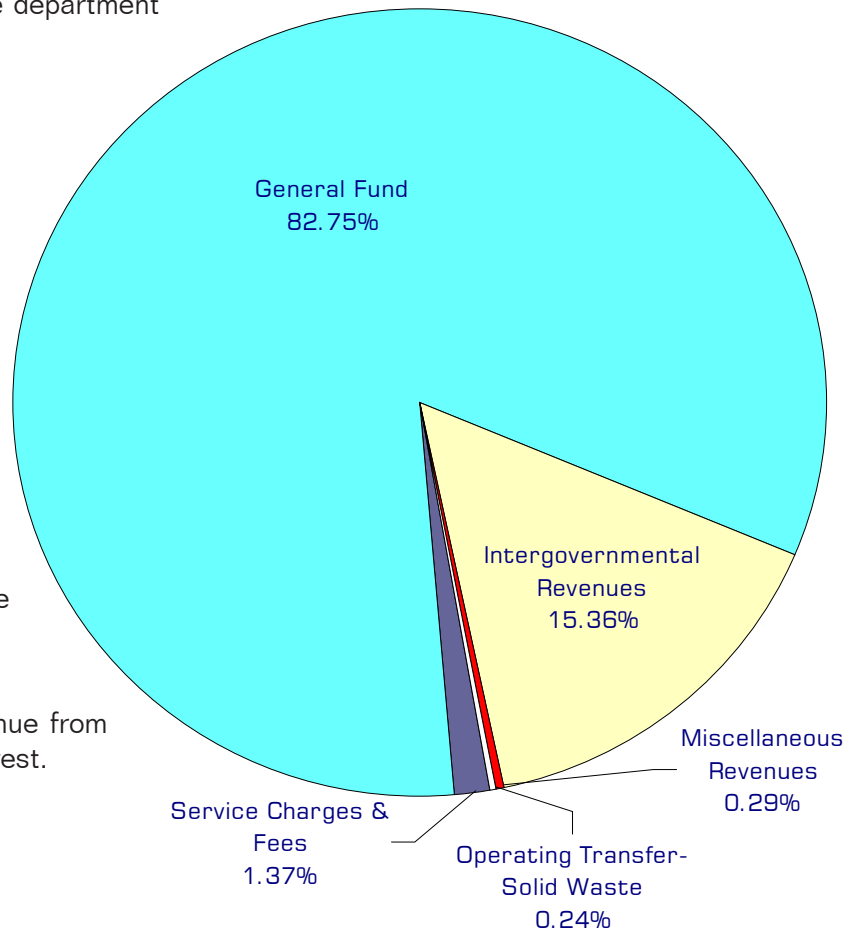
Payment from Solid Waste for supervisor of detention's Juvenile Litter Crews.

### Intergovernmental Revenues

State grants fund various programs including intervention activities, parole violator detention, diversion programs, sex offender treatment, and substance abuse treatment for juveniles.

### Miscellaneous Revenue

Includes contributions and revenue from detainee phone usage from Qwest.



## Performance / Activity Measures

	Actual 2003	Actual 2004	Actual 2005	Projected 2006	Projected 2007	Projected 2008
<i>Detention</i>						
<i>Detention</i>						
Population (Offenders)	1,041	1,031	890	900	900	900
Population (Offenders) Bed Days	9,818	8,577	7,227	7,200	7,200	7,200
Average Length of Stay - Bed Days	9	8	8	8	8	8
At-Risk/Truancy/CHINS Contempts	119	80	85	190	180	180
At-Risk/Truancy/CHINS Contempts - Bed Days	176	192	195	134	140	140
Truancy/Contempts - Bed Days	67	75	75	50	50	50
<i>Probation</i>						
<i>Community Supervision</i>						
Referred to Diversion	576	624	625	625	650	650
Diversion Agreements Entered	507	550	550	550	600	600
Diversion Agreements Completed	431	450	475	475	525	525
Assigned to Community Supervision	700	634	650	650	650	650
Restitution Collected	\$ 55,000	\$ 65,000	\$ 56,000	\$ 60,000	\$ 60,000	\$ 60,000
<i>Court Services</i>						
Cases Filed	742	584	660	650	650	650
Proceedings Held	3,500	3,600	3,400	3,400	3,400	3,400
At-Risk Youth (ARY) Petitions Filed	56	50	69	70	70	70
Children in Need of Services Petitions Filed	14	8	10	2	8	8
Truancy Petitions Filed	242	300	380	400	400	400
Dependencies Filed	83	87	108	160	160	160

# Expenditures Summary

	Actual 2003	Actual 2004	Actual 2005	Budget 2006	Budget 2007	Budget 2008
<b>GENERAL FUND</b>						
1900 Juvenile Court Administration						
Salaries & Wages	809,501	831,673	871,504	948,330	1,005,643	1,025,348
Benefits	204,009	222,797	239,784	299,360	350,290	385,142
Supplies	23,891	22,169	35,409	25,650	16,650	18,650
Other Services & Charges	149,613	271,265	272,833	288,369	321,458	332,105
Capital Outlay	1,385	102,032	-	-	-	-
<i>Total Juvenile Ct Admin.</i>	<i>1,188,399</i>	<i>1,449,936</i>	<i>1,419,530</i>	<i>1,561,709</i>	<i>1,694,041</i>	<i>1,761,245</i>
<i>Percent Change from Previous Year</i>	<i>9.2%</i>	<i>22.0%</i>	<i>-2.1%</i>	<i>10.0%</i>	<i>8.5%</i>	<i>4.0%</i>
1941 Juvenile Ct - Healthy Choices Girls						
Other Services & Charges	44,129	24,307	-	-	-	-
<i>Total Juvenile Ct Healthy Choice Girl.</i>	<i>44,129</i>	<i>24,307</i>	<i>-</i>	<i>-</i>	<i>-</i>	<i>-</i>
<i>Percent Change from Previous Year</i>	<i>-22.0%</i>	<i>-44.9%</i>	<i>-100.0%</i>	<i>0.0%</i>	<i>0.0%</i>	<i>0.0%</i>
1945 Juvenile Court - Comm Justice Center						
Salaries & Wages	43,109	119,109	132,561	194,040	218,865	220,560
Benefits	11,492	40,331	54,893	76,226	92,077	100,309
Supplies	3,424	2,364	3,110	6,550	6,050	10,050
Other Services & Charges	99,905	102,942	77,081	86,264	59,905	60,852
Operating Transfers	2,763	2,662	1,577	3,000	-	-
<i>Total Juvenile Ct -Comm Justice Ctr</i>	<i>160,693</i>	<i>267,408</i>	<i>269,222</i>	<i>366,080</i>	<i>376,897</i>	<i>391,771</i>
<i>Percent Change from Previous Year</i>	<i>-22.5%</i>	<i>66.4%</i>	<i>0.7%</i>	<i>36.0%</i>	<i>3.0%</i>	<i>3.9%</i>
1950 Juvenile Court - CJS						
Salaries & Wages	161,494	119,001	131,235	114,020	101,516	103,304
Benefits	42,523	32,971	31,702	32,776	37,181	40,374
Supplies	2,384	1,144	1,562	2,700	25,189	23,189
Other Services & Charges	102,272	130,194	95,460	106,584	126,539	125,138
<i>Total Juvenile Ct - CJS</i>	<i>308,673</i>	<i>283,310</i>	<i>259,959</i>	<i>256,080</i>	<i>290,425</i>	<i>292,005</i>
<i>Percent Change from Previous Year</i>	<i>-7.8%</i>	<i>-8.2%</i>	<i>-8.2%</i>	<i>-1.5%</i>	<i>13.4%</i>	<i>0.5%</i>
1953 Juvenile Court - Parole Detention						
Salaries & Wages	41,753	37,348	32,810	56,532	-	-
Benefits	11,006	10,596	11,661	16,285	-	-
Supplies	-	139	202	2,349	1,849	1,849
Other Services & Charges	-	-	-	8,000	8,000	8,000
<i>Total Juvenile Ct - Parole Det.</i>	<i>52,759</i>	<i>48,083</i>	<i>44,673</i>	<i>83,166</i>	<i>9,849</i>	<i>9,849</i>
<i>Percent Change from Previous Year</i>	<i>11.5%</i>	<i>-8.9%</i>	<i>-7.1%</i>	<i>86.2%</i>	<i>-88.2%</i>	<i>0.0%</i>
1959 Juvenile Court - Becca Bill						
Salaries & Wages	43,609	45,403	52,907	57,141	59,952	60,012
Benefits	11,590	12,437	14,213	16,395	19,332	21,098
Supplies	-	-	-	500	500	500
Other Services & Charges	860	6,319	1,306	1,750	1,750	1,750
<i>Total Juvenile Ct - Becca Bill</i>	<i>56,059</i>	<i>64,159</i>	<i>68,426</i>	<i>75,786</i>	<i>81,534</i>	<i>83,360</i>
<i>Percent Change from Previous Year</i>	<i>3.4%</i>	<i>14.4%</i>	<i>6.7%</i>	<i>10.8%</i>	<i>7.6%</i>	<i>2.2%</i>

continued on next page

Expenditures Summary continued

	Actual 2003	Actual 2004	Actual 2005	Budget 2006	Budget 2007	Budget 2008
<b>1961 Juvenile Court - DSHS</b>						
Salaries & Wages	20,259	2,484	-	-	-	-
Benefits	8,915	880	-	-	-	-
Supplies	136	51	-	600	600	600
Other Services & Charges	9,638	931	1,258	1,150	650	650
<i>Total Juvenile Ct - DSHS</i>	<i>38,948</i>	<i>4,346</i>	<i>1,258</i>	<i>1,750</i>	<i>1,250</i>	<i>1,250</i>
<i>Percent Change from Previous Year</i>	<i>-37.4%</i>	<i>-88.8%</i>	<i>-71.1%</i>	<i>39.1%</i>	<i>-28.6%</i>	<i>0.0%</i>
<b>1962 Juvenile Court - CDDA Grant</b>						
Salaries & Wages	18,709	21,327	15,276	-	-	-
Benefits	4,512	5,452	6,140	-	-	-
Supplies	995	1,812	2,849	2,070	6,200	6,200
Other Services & Charges	33,865	22,102	21,443	23,018	25,730	25,730
<i>Total Juvenile Ct - CDDA Grant</i>	<i>58,081</i>	<i>50,693</i>	<i>45,708</i>	<i>25,088</i>	<i>31,930</i>	<i>31,930</i>
<i>Percent Change from Previous Year</i>	<i>145.3%</i>	<i>-12.7%</i>	<i>-9.8%</i>	<i>-45.1%</i>	<i>27.3%</i>	<i>0.0%</i>
<b>1963 Juvenile Court - CJAA-DSHS Misc</b>						
Salaries & Wages	24,558	31,099	40,794	-	59,520	60,012
Benefits	7,027	9,117	4,839	-	19,229	21,056
Supplies	3,266	5,174	4,516	1,002	1,002	1,002
Other Services & Charges	16,939	27,326	12,785	15,615	31,549	31,771
<i>Total Juvenile Ct-CJAA-DSHS</i>	<i>51,790</i>	<i>72,716</i>	<i>62,934</i>	<i>16,617</i>	<i>111,300</i>	<i>113,841</i>
<i>Percent Change from Previous Year</i>	<i>48.6%</i>	<i>40.4%</i>	<i>-13.5%</i>	<i>-73.6%</i>	<i>569.8%</i>	<i>2.3%</i>
<b>1964 Juvenile Court - Teen Court</b>						
Other Services & Charges	33,297	18,500	18,500	18,000	18,500	18,500
<i>Total Juvenile Ct - Teen Court</i>	<i>33,297</i>	<i>18,500</i>	<i>18,500</i>	<i>18,000</i>	<i>18,500</i>	<i>18,500</i>
<i>Percent Change from Previous Year</i>	<i>-54.2%</i>	<i>-44.4%</i>	<i>0.0%</i>	<i>-2.7%</i>	<i>2.8%</i>	<i>0.0%</i>
<b>1965 Juvenile Court - GJJAC - JDAI</b>						
Salaries & Wages	-	756	25,943	3,350	-	-
Benefits	-	70	2,405	325	-	-
Supplies	-	-	1,901	800	-	-
Other Services & Charges	-	4,493	25,474	20,741	-	-
<i>Total Juvenile Ct - GJJAC-JDAI</i>	<i>-</i>	<i>5,319</i>	<i>55,723</i>	<i>25,216</i>	<i>-</i>	<i>-</i>
<i>Percent Change from Previous Year</i>	<i>0.0%</i>	<i>0.0%</i>	<i>947.6%</i>	<i>-54.7%</i>	<i>0.0%</i>	<i>0.0%</i>
<b>1970 Juvenile Court - Res. Care</b>						
Salaries & Wages	755,377	701,294	808,618	774,633	817,091	855,335
Benefits	197,891	214,976	246,336	303,341	349,899	384,005
Supplies	23,380	44,709	70,491	88,200	87,370	86,600
Other Services & Charges	11,391	214,543	185,378	191,247	216,069	223,384
Capital Outlay	1,459	-	6,154	-	-	-
<i>Total Juvenile Ct - Res. Care</i>	<i>989,498</i>	<i>1,175,522</i>	<i>1,316,977</i>	<i>1,357,421</i>	<i>1,470,429</i>	<i>1,549,324</i>
<i>Percent Change from Previous Year</i>	<i>-2.0%</i>	<i>18.8%</i>	<i>12.0%</i>	<i>3.1%</i>	<i>8.3%</i>	<i>5.4%</i>

continued on next page

Expenditures Summary continued

	Actual 2003	Actual 2004	Actual 2005	Budget 2006	Budget 2007	Budget 2008
1971 Juvenile Work Crew						
Salaries & Wages	76,051	-	-	-	-	-
Benefits	23,048	-	-	-	-	-
Supplies	1,237	-	-	-	-	-
Other Services & Charges	841	-	-	-	-	-
<i>Total Juvenile Ct Work Crew</i>	<i>101,177</i>	<i>-</i>	<i>-</i>	<i>-</i>	<i>-</i>	<i>-</i>
<i>Percent Change from Previous Year</i>	<i>81.0%</i>	<i>-100.0%</i>	<i>0.0%</i>	<i>0.0%</i>	<i>0.0%</i>	<i>0.0%</i>
1980 Juvenile Court - Medical/Dental						
Supplies	6,705	-	-	-	-	-
Other Services & Charges	3,061	-	-	-	-	-
<i>Total Juvenile Ct - Med/Dental</i>	<i>9,766</i>	<i>-</i>	<i>-</i>	<i>-</i>	<i>-</i>	<i>-</i>
<i>Percent Change from Previous Year</i>	<i>-38.4%</i>	<i>-100.0%</i>	<i>0.0%</i>	<i>0.0%</i>	<i>0.0%</i>	<i>0.0%</i>
1985 Juvenile Court - Alcoa						
Salaries & Wages	21,039	-	-	-	-	-
Benefits	6,411	-	-	-	-	-
Supplies	71	-	-	-	-	-
Other Services & Charges	459	-	-	-	-	-
<i>Total Juvenile Ct - Alcoa</i>	<i>27,980</i>	<i>-</i>	<i>-</i>	<i>-</i>	<i>-</i>	<i>-</i>
<i>Percent Change from Previous Year</i>	<i>228.8%</i>	<i>-100.0%</i>	<i>0.0%</i>	<i>0.0%</i>	<i>0.0%</i>	<i>0.0%</i>
1990 Juvenile Court - Facilities						
Other Services & Charges	302,344	-	-	-	-	-
<i>Total Juvenile Ct. - Facilities</i>	<i>302,344</i>	<i>-</i>	<i>-</i>	<i>-</i>	<i>-</i>	<i>-</i>
<i>Percent Change from Previous Year</i>	<i>-3.1%</i>	<i>-100.0%</i>	<i>0.0%</i>	<i>0.0%</i>	<i>0.0%</i>	<i>0.0%</i>
1995 Juvenile - DOE Comm Litter Clean						
Salary & Wages	3,926	3,081	3,896	-	-	-
Benefits	591	514	397	-	-	-
<i>Total Juvenile Ct - DOE</i>	<i>4,517</i>	<i>3,595</i>	<i>4,293</i>	<i>-</i>	<i>-</i>	<i>-</i>
<i>Percent Change from Previous Year</i>	<i>2.7%</i>	<i>-20.4%</i>	<i>19.4%</i>	<i>-100.0%</i>	<i>0.0%</i>	<i>0.0%</i>
<b><i>TOTAL JUVENILE COURT</i></b>	<b><i>3,428,110</i></b>	<b><i>3,467,894</i></b>	<b><i>3,567,203</i></b>	<b><i>3,786,913</i></b>	<b><i>4,086,155</i></b>	<b><i>4,253,075</i></b>
<i>Percent Change from Previous Year</i>	<i>1.0%</i>	<i>1.2%</i>	<i>2.9%</i>	<i>6.2%</i>	<i>7.9%</i>	<i>4.1%</i>

## Services

### **Community Supervision (Probation)**

The supervision of juvenile offenders by probation officers as defined by the order of disposition by the court or conditions contained in an individualized agreement between probation officer and offender.

### **Court Services/Intake**

Provides court related information requested by the judge, prosecutor, and public defender; keeps offenders informed of all hearings; administers short form risk assessment; provides pre-trial monitoring.

### **Community Justice Accountability Act (CJAA)**

Provides Aggression Replacement Training (ART), Family Functional Therapy (FFT) and coordination of services to youth and their families.

### **Parole Detention/Diagnostics**

Custody & care of youth held in detention who are under Juvenile Rehabilitation Administration (JRA) Parole Supervision or pending transportation to the institutions. Pre/post diagnostic report writing on youth committed to JRA.

### **Juvenile Detention**

Juvenile Detention is a safe and secure environment for youth who have been arrested pending a court appearance or who have been sentenced to serve time after a court appearance.

### **Community Justice Programs**

Community justice programs provide community based alternatives to detention and case management support for probation officers.

### **Consolidated Juvenile Services - Diversion**

Eligible minor & first offenders are referred to the Diversion Unit, where they may choose to enter a diversion agreement in lieu of going to court and being placed on probation.

### **Consolidated Juvenile Services - SSODA**

All first-time adjudicated felony sex offenders are evaluated for risk to the community and suitability for community based treatment.

### **Becca Bill Program**

The Becca Bill programs fall into 3 categories: At-Risk Youth; Children in Need of Services (CHINS); and Truancy. Court intervention, case planning, and monitoring services are provided.

### **Victim Restoration Program**

Provides advocacy services to victims of juvenile crime including Court process information, victim impact statements, restitution claim processing and collection, and general support.

### **Chemical Dependency Disposition Alternative (CDDA)**

E3SHB 3900 allows for the evaluation of chemically abusing youth to be considered for a disposition alternative that allows judges to order treatment instead of confinement.

