

# Health Department

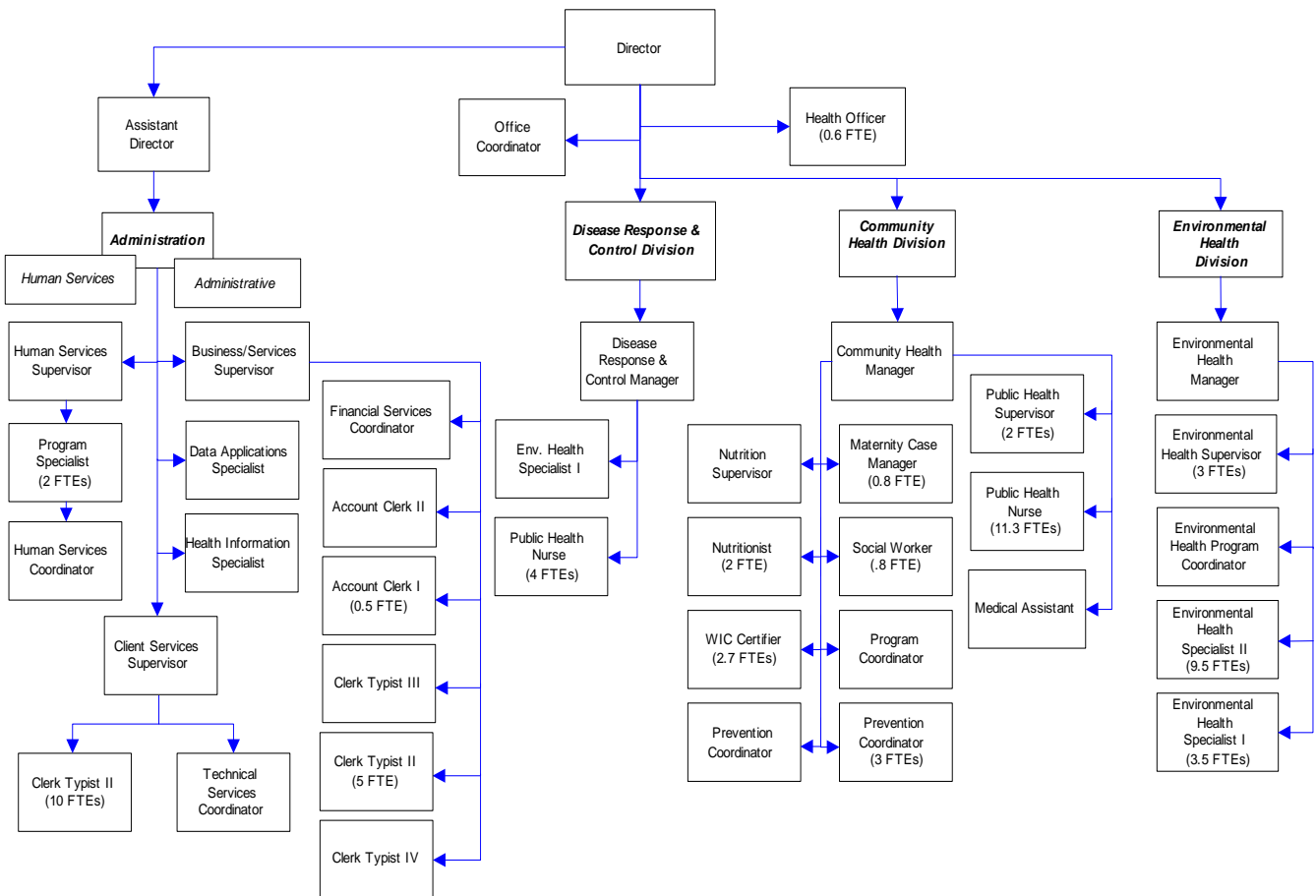
The Health Department provides a variety of services to the public: restaurant permits and inspections, food worker health permits, investigation of food-borne illness, solid waste and sewage permits, water quality reviews, animal to human disease investigations, communicable disease screening, treatment, investigation, immunizations, vital records (birth and death certificates, etc.), personal health services, services to the developmentally disabled and their families, mental health treatment coordination; chemical dependency treatment coordination and substance abuse prevention.

## FTE's for this department

Year	2003	2004	2005	*2006	*2007	*2008
FTE	80.10	80.10	80.50	80.70	84.70	85.70

*\*budget*

The chart below shows the organizational structure for 2007 only.



## Mission & Objectives

### Mission

Preserve and enhance the health and quality of life in Whatcom County.

#### Community Health

Work with individuals, families and communities to promote wellness, prevent disease and injury, identify and resolve health problems and ensure access to services as defined by the Standards for Public Health in Washington State.

#### Disease Response & Control

Protect the population of Whatcom County from communicable disease through case investigation and surveillance, and lead in Public Health preparedness.

#### Environmental Health

Minimize the public's exposure to environmental hazards, such as harmful chemicals and biological agents.

#### Human Services

Be responsive to the needs of Whatcom County citizens by ensuring quality mental health, substance abuse, and developmental disability services. Support innovative quality-driven community prevention programs for all residents.

### Objectives

#### Community Health

- To more fully measure the impact of public health nurse visits to pregnant women, complete newly developed outcome measures on 85% of clients on the First Steps program.
- Engage key community stakeholders to improve access to dental care for low income children through recruitment of a new pediatric dentist or other identified strategy.

- Provide support for and monitoring of physician offices that will be required to participate in the new state Vaccine-For-Children ordering and delivery system.
- Persuade 95% of family practice physicians and pediatricians who give vaccines to children to enroll in the State Immunization Registry to ensure higher rates of immunizations in Whatcom County.
- Partner with UW School of Nursing on an home environmental hazard research project to determine if public health home visits and education make a difference in parents' knowledge and attitudes and the level of risk to the children in their home.

#### Disease Response & Control

- Complete community task force planning recommendations for pandemic influenza.
- Exercise the Health Department's pandemic influenza plan including a communication component.
- Update all Health Department emergency response plans including the Pandemic Flu Plan and the Strategic National Stockpile Plan.
- Facilitate formation of a Medical Reserve Corps to provide medical surge capacity during an emergency.
- Complete Memorandums of Understanding with tribes, school districts, and other local partners to clarify roles, responsibilities, and mutual aid.
- Implement the state's new electronic systems for laboratory test reporting.

## Objectives continued

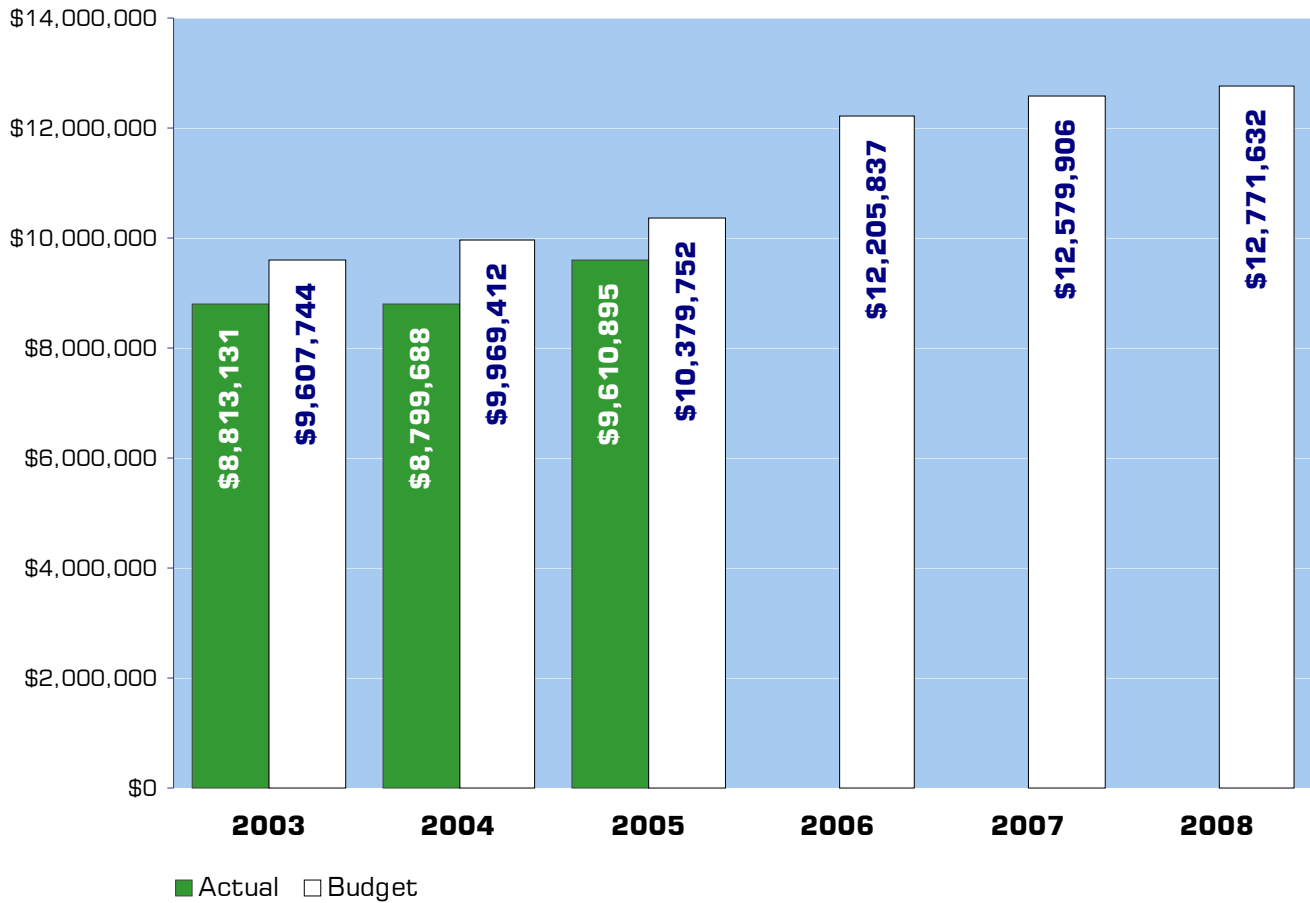
**Environmental Health**

- Enhance and increase Group B System water quality monitoring.
- Increase coordination with WSDOH in addressing nitrate problems in public water systems.
- Develop and adopt the On-Site Sewage Operations and Maintenance Management Plan.
- Complete revision of the on-site sewage regulations for Board of Health adoption.
- Continue to coordinate with Planning and Development Services to streamline the land development permitting process.
- Participate in and contribute to the interagency/intergovernmental effort to clean up the Nooksack Foothills Recycling landfill.
- Develop an environmental health component for childcare facilities.
- Continue standardization of FDA food program inspection procedures.
- Implement a food service recognition program for excellence in food safety.
- Ensure safe management of asbestos sediment issues resulting from Swift Creek dredging.
- Implement the 2060/2163 housing programs to provide housing assistance to homeless and very low-income persons and to support operating costs of emergency shelters.
- Develop housing resources to stabilize substance abusing people in housing and treatment simultaneously.
- Develop co-located triage services consisting of mental health crisis respite and detoxification services to provide cost effective access to behavioral health crisis services.
- Develop a medical and behavioral health pilot project to promote integrated or coordinated services for public funded citizens of Whatcom County.
- Develop a six-year countywide strategic plan for substance abuse prevention.
- Utilize Healthy Communities Tool Kit to conduct community assessment and develop Whatcom County's action plan to address physical activity and nutrition.
- Decrease youth access to tobacco products by conducting 300 tobacco compliance checks and a community education campaign on the social sources of youth tobacco use.
- Increase tobacco cessation options for residents by promoting the Washington State tobacco quitline, providing tobacco cessation classes, and training health care providers on Basic Tobacco Intervention Skills.
- Decrease exposure to secondhand smoke of residents by continuing education and enforcement of the revised Clean Indoor Air Act and by promoting smoke-free homes, autos, and parks.

**Human Services**

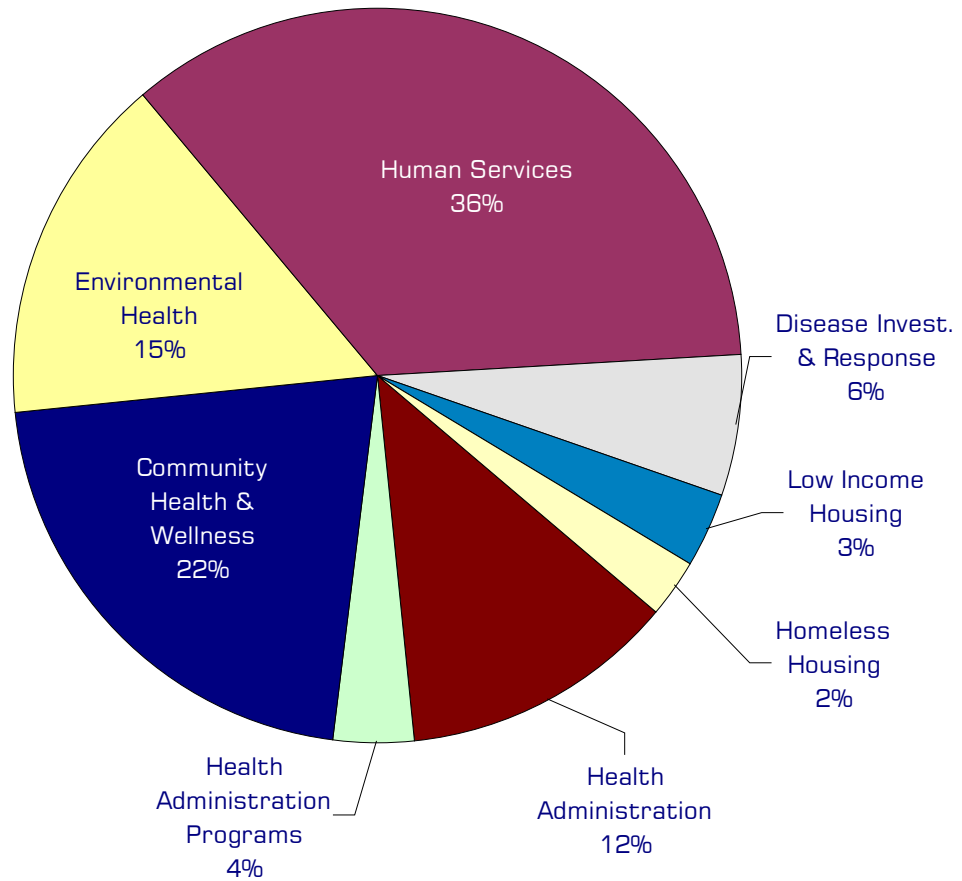
- Ensure developmentally disabled individuals receiving county funded day program services are gainfully employed or have an employment plan.
- Collaborate with school districts to increase preparedness for employment upon graduation for developmentally disabled clients and to increase participation in birth to three early intervention services.

# Expenditure Trends



NOTE: Capital expenditures and interfund operating transfers are not shown to more accurately reflect ongoing operational costs.

## 2007-2008 Budget by Program



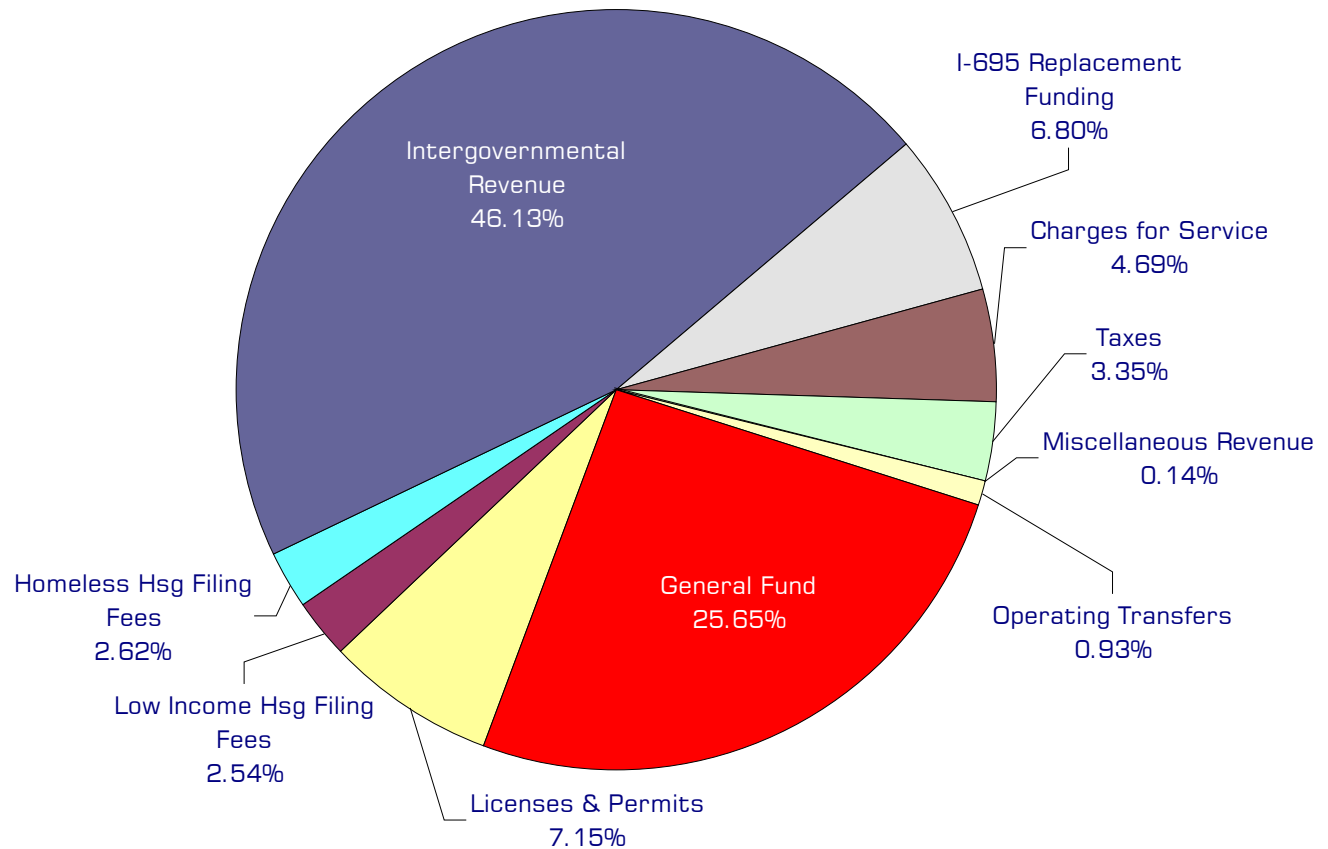
*NOTE: Capital expenditures and interfund operating and residual equity transfers are not shown to more accurately reflect ongoing operational costs.*

## Program Summary

	Actual 2003	Actual 2004	Actual 2005	Budget 2006	Budget 2007	Budget 2008
<b>OPERATIONS</b>						
<b>General Fund</b>						
Health Administration	1,567,442	1,490,548	1,283,080	1,408,801	1,530,272	1,583,995
Health Administration Programs	293,512	197,401	369,140	441,552	479,678	445,183
Community Health & Wellness	2,219,233	2,130,895	2,372,797	2,522,236	2,671,593	2,760,338
Environmental Health	1,176,888	1,232,334	1,328,417	1,665,387	1,866,970	2,010,074
Human Services	2,992,926	3,070,308	3,443,753	4,518,354	4,528,144	4,423,863
Disease Invest. & Response	563,130	664,202	558,489	684,927	793,249	808,179
<b>121 Low Income Housing</b>	-	14,000	245,319	614,580	410,000	410,000
<b>122 Homeless Housing</b>	-	-	9,900	350,000	300,000	330,000
<i>Total Health Operations</i>	8,813,131	8,799,688	9,610,895	12,205,837	12,579,906	12,771,632
<b>CAPITAL</b>						
<b>General Fund</b>						
Health Administration	-	66,074	-	12,600	-	-
Health Administration Programs	7,810	1,980	5,331	-	-	-
Community Health & Wellness	1,652	2,168	-	-	-	-
Environmental Health	-	3,642	-	31,000	-	-
Disease Invest. & Response	6,709	-	-	10,440	-	-
<i>Total Health Capital</i>	16,171	73,864	5,331	54,040	-	-
<b>TRANSFERS</b>						
<b>General Fund</b>						
Health Administration	-	1,200	1,096	1,274	2,143	2,032
Environmental Health	-	-	-	-	66,000	33,000
<b>122 Homeless Housing</b>	-	-	-	-	20,000	20,000
<i>Total Health Transfers</i>	-	1,200	1,096	1,274	88,143	55,032
<b>TOTAL HEALTH</b>	8,829,302	8,874,752	9,617,322	12,261,151	12,668,049	12,826,664
<i>Percent Change from Previous Year</i>	-0.1%	0.5%	8.4%	27.5%	3.3%	1.3%

## 2007-2008 Funding Sources

	<b>2007</b>	<b>2008</b>
Licenses & Permits	876,310	922,289
Low Income Hsg Filing Fees	320,000	320,000
Homeless Hsg Filing Fees	330,000	330,000
Intergovernmental Revenue	5,866,404	5,739,563
I-695 Replacement Funding	855,863	855,863
Charges for Service	549,200	631,200
Taxes	411,500	431,500
Miscellaneous Revenue	17,064	17,064
Operating Transfers	117,446	117,446
General Fund	3,156,119	3,296,707
Fund Balance*	80,000	110,000
<b>Total Funding</b>	<b>12,579,906</b>	<b>12,771,632</b>



*Fund balance not included in above chart.*

## Funding Sources continued

**Licenses & Permits**

The Health and Human Services Department issues various licenses and permits. These include business licenses for restaurants, taverns and grocery stores, RV and mobile home parks, solid waste sites, sewage system designers, cleaners and installers, food handlers, and water recreation facilities. Additionally, the department also grants noncommercial permits for septic tank installation and repair.

**Homeless Housing & Low Income Housing Filing Fees**

Surcharges on documents recorded by the County Auditor. Authorized by RCW 36.22.178 & 179 to be used to provide low income and homeless housing assistance.

**Intergovernmental Revenue**

A variety of federal and state grants as well as intergovernmental payments for service are received by the department. These grants fund women, infant, and children programs, substance abuse counseling and recovery, developmentally disabled assistance, and communicable disease programs.

**I-695 Replacement Funding**

Initiative 695 repealed the motor vehicle excise tax in 1999. This is money that the state legislature provides to replace the lost funding.

**Charges for Service**

Fees for the provision of certain services the department provides such as sewage site inspections, building plan review, birth and death records, and immunizations.

**Property Taxes**

RCW 71.20.110 requires counties to levy two and one half cents per thousand dollars of assessed value for community services for persons with developmental disabilities or mental health problems.

**Miscellaneous Revenue**

Small amounts of revenue received mainly from contributions and state timber sales.

**Operating Transfers**

Operating transfers of \$70,446 from the Solid Waste Fund to support solid waste enforcement efforts, \$5,000 from Community Development Fund to support mental health service, \$42,000 from the Jail Fund to support counseling services provided to inmates, and \$20,000 from the Homeless Housing Fund to support the Human Services Coordinator position that manages housing contracts.

**General Fund**

Undedicated General Fund resources.

**Fund Balance**

Fund Balances in the Homeless Housing Fund are expected to increase by \$10,000 in 2007 and decrease by \$20,000 in 2008. In Low Income Housing, the fund balance is expected to decrease by \$90,000 each year.

## Performance / Activity Measures

	Actual 2003	Actual 2004	Actual 2005	Projected 2006	Projected 2007	Projected 2008
<i>Administration</i>						
Birth certificates	7,479	7,395	7,499	7,800	7,800	7,800
Death certificates	1,467	1,920	2,271	1,900	1,900	1,900
Additional Death Certificates	4,479	4,881	4,637	5,000	5,000	5,000
<i>Community Health</i>						
<i>HIV/AIDS</i>						
Needles exchanged in Needle Exchange Program (NEP)	130,000	133,430	117,315	120,000	120,000	120,000
Individuals participating in NEP referred to drug treatment	43	64	50	50	50	50
<i>Immunization</i>						
Doses of state-supplied childrens' vaccine distributed to physician offices	54,895	51,622	57,270	58,000	59,000	60,000
Doses of vaccine administered in HD clinic	4,922	3,104	3,084	3,000	3,100	3,200
<i>Nutrition</i>						
WIC women who initiated breast feeding	87%	87%	89%	89%	90%	91%
<i>Oral Health</i>						
Medicaid eligible children aged 0-5 who received dental services	40%	41%	39%	42%	43%	44%
<i>Parent/Child</i>						
Births to teens under 18	47	48	NA	45	40	40
Home visits	2909	2884	2777	2800	2800	2900
Specialty clinic visits	111	112	104	110	120	130
<i>Disease Response &amp; Control</i>						
<i>Environmentally Related Diseases</i>						
Campylobacteriosis rate per 100,000	25.8	31.2	34.3	35.2	33.5	34.3
E. coli 0157:H7 rate per 100,000	2.3	4.1	6.6	5.3	5.2	6.1
Giardiasis rate per 100,000	18.9	14.1	8.8	9.2	8.7	10.2
Hepatitis A rate per 100,000	4	2.4	2.2	2.5	2.6	2.1
Salmonellosis rate per 100,000	13.8	13.5	8.3	10.6	11.8	9.3
Shigellosis rate per 100,000	3.4	1.2	0	5.2	3.1	2.2
<i>Respiratory Diseases &amp; TB Control</i>						
Meningococcal rate per 100,000	1.1	0	1.1	0	0	1
Pertussis rate per 100,000	26	177	80	50	33	20

continued on next page

## Performance / Activity Measures continued

	Actual 2003	Actual 2004	Actual 2005	Projected 2006	Projected 2007	Projected 2008
Tuberculosis rate per 100,000	3	4	3	3	3	3
People completing treatment of latent TB	71%	82%	74%	80%	82%	83%
People with active TB completing treatment	100%	100%	100%	100%	100%	100%
<i>STD &amp; Bloodborne Diseases</i>						
Reported STD's receiving recommended treatment	92%	98.6%	99.5%	95%	97%	98%
AIDS/HIV rate per 100,000	2.9	5.7	6.1	6.5	6.8	7.1
Chlamydia rate per 100,000	237.2	270.5	237.3	245.3	250.1	233.2
Gonorrhea rate per 100,000	36.7	32.9	59.2	60.3	61.2	63
Hepatitis B rate per 100,000	5.2	4.1	5.5	4.2	5.3	5.1
<i>Environmental Health</i>						
<i>Chemical &amp; Physical Hazards</i>						
Number of clandestine drug lab incidents and investigations	22	28	8	8	8	8
<i>Drinking Water Program</i>						
Certificates for drinking water availability issued	588	599	602	612	622	632
<i>Food Program</i>						
Routine food service inspections	1,070	1,045	693	700	800	800
Food service inspections resulting in scores > 35 critical violation points	1.5%	3.1%	8.5%	8.5%	8.5%	8.5%
<i>Living Environment</i>						
Rabies post-exposure series recommended	24	5	44	12	12	12
<i>On-Site Sewage</i>						
On-site sewage complaints/year	102	104	107	105	105	160
Percent of septic tanks pumped	7%	6%	6.7%	7%	10%	15%
Septic system permits issued	744	790	805	825	890	1,000
<i>Solid Waste</i>						
Complaints/year	106	126	145	160	160	160
<i>Human Services</i>						
<i>Crisis Services</i>						
Rate of detox admissions (duplicated per 100,000)	637	636	540	620	620	620
Rate of detox admissions (unduplicated per 100,000)	373	366	319	350	350	350

continued on next page

Performance / Activity Measures continued

	Actual 2003	Actual 2004	Actual 2005	Projected 2006	Projected 2007	Projected 2008
<i>Developmental Disabilities Services</i>						
Participants in Community Access/Retirement	76	76	77	22	23	24
Children in Early Intervention Programs	59	68	91	95	95	95
Individuals in employment programs	230	206	207	268	273	278
<i>Mental Health Services</i>						
Monthly average clients receiving outpatient services	2,600	NA	1,559	1,664	1,764	1,864
Annual number of clients screened at crisis phone line	18,000	NA	20,514	20,514	19,587	20,100
Involuntary detentions	400	410	415	420	471	500
<i>Substance Abuse Prevention</i>						
Juvenile alcohol & drug law arrests/100,000	1,489	1,458	1,400	1,382	1,304	1,232
Adult alcohol & drug arrests/100,000	1,556	1,555	1,500	1,304	1,379	1,309
<i>Substance Abuse Services</i>						
Clients who successfully completed treatment	40.2%	41.7%	38.2%	40%	43%	46%
Rate of treatment admissions (duplicated per 100,000)	584	415	498	500	500	500
<i>Tobacco Prevention</i>						
% of retailers who sell to minors during "compliance checks"	19.0%	6.5%	15.3%	5.6%	8%	8%
Number of calls to Tobacco Quitline	NA	402	654	698	742	786

## Expenditures Summary

	Actual 2003	Actual 2004	Actual 2005	Budget 2006	Budget 2007	Budget 2008
<b>HEALTH</b>						
Health Administration						
Salaries & Wages	561,747	585,624	425,114	481,658	423,298	426,631
Benefits	156,633	171,119	144,609	180,055	190,273	208,190
Supplies	20,172	23,081	16,367	27,700	45,200	48,767
Other Services & Charges	828,890	702,745	674,355	719,388	871,501	900,407
Capital Outlay	-	66,074	-	12,600	-	-
Debt Service	-	7,979	22,635	-	-	-
Operating Transfers	-	1,200	1,096	1,274	2,143	2,032
<i>Total Health Administration</i>	<i>1,567,442</i>	<i>1,557,822</i>	<i>1,284,176</i>	<i>1,422,675</i>	<i>1,532,415</i>	<i>1,586,027</i>
<i>Percent Change from Previous Year</i>	<i>-17.1%</i>	<i>-0.6%</i>	<i>-17.6%</i>	<i>10.8%</i>	<i>7.7%</i>	<i>3.5%</i>
Health Administration Programs						
Salaries & Wages	126,277	68,106	144,192	46,236	203,546	212,416
Benefits	21,952	18,514	12,874	15,120	39,482	43,766
Supplies	14,245	20,968	45,755	5,300	8,000	9,000
Other Services & Charges	131,038	89,813	166,319	374,896	228,650	180,001
Capital Outlay	7,810	1,980	5,331	-	-	-
<i>Total Health Administration Program</i>	<i>301,322</i>	<i>199,381</i>	<i>374,471</i>	<i>441,552</i>	<i>479,678</i>	<i>445,183</i>
<i>Percent Change from Previous Year</i>	<i>-84.0%</i>	<i>-33.8%</i>	<i>87.8%</i>	<i>17.9%</i>	<i>8.6%</i>	<i>-7.2%</i>
Community Health & Wellness						
Salaries & Wages	1,395,783	1,309,008	1,627,342	1,720,573	1,765,964	1,789,532
Benefits	526,546	520,667	449,443	541,980	623,821	683,186
Supplies	119,056	124,525	94,307	101,180	101,938	107,250
Other Services & Charges	177,848	176,695	201,705	158,503	179,870	180,370
Capital Outlay	1,652	2,168	-	-	-	-
<i>Total Community Health</i>	<i>2,220,885</i>	<i>2,133,063</i>	<i>2,372,797</i>	<i>2,522,236</i>	<i>2,671,593</i>	<i>2,760,338</i>
<i>Percent Change from Previous Year</i>	<i>11.1%</i>	<i>-4.0%</i>	<i>11.2%</i>	<i>6.3%</i>	<i>5.9%</i>	<i>3.3%</i>
Environmental Health						
Salaries & Wages	767,542	869,676	961,631	1,101,139	1,238,637	1,337,954
Benefits	226,543	253,484	252,563	340,042	388,738	427,935
Supplies	27,169	23,689	33,484	43,966	64,375	60,925
Other Services & Charges	155,634	85,485	80,739	180,240	175,220	183,260
Capital Outlay	-	3,642	-	31,000	-	-
Residual Equity Transfers	-	-	-	-	66,000	33,000
<i>Total Environmental Health</i>	<i>1,176,888</i>	<i>1,235,976</i>	<i>1,328,417</i>	<i>1,696,387</i>	<i>1,932,970</i>	<i>2,043,074</i>
<i>Percent Change from Previous Year</i>	<i>-2.1%</i>	<i>5.0%</i>	<i>7.5%</i>	<i>27.7%</i>	<i>13.9%</i>	<i>5.7%</i>

continued on next page

Expenditures Summary continued

	Actual 2003	Actual 2004	Actual 2005	Budget 2006	Budget 2007	Budget 2008
<b>Human Services</b>						
Salaries & Wages	237,963	216,011	191,003	187,478	273,316	276,759
Benefits	81,076	78,917	73,975	92,608	120,515	132,421
Supplies	8,001	9,796	18,356	12,929	7,800	9,800
Other Services & Charges	2,665,886	2,765,584	3,160,419	4,225,339	4,126,513	4,004,883
<i>Total Human Services</i>	<i>2,992,926</i>	<i>3,070,308</i>	<i>3,443,753</i>	<i>4,518,354</i>	<i>4,528,144</i>	<i>4,423,863</i>
<i>Percent Change from Previous Year</i>	<i>-10.1%</i>	<i>2.6%</i>	<i>12.2%</i>	<i>31.2%</i>	<i>0.2%</i>	<i>-2.3%</i>
<b>Disease Invest. &amp; Response</b>						
Salaries & Wages	499,372	582,941	393,073	485,874	528,539	541,382
Benefits	11,276	9,251	120,025	146,253	185,110	203,897
Supplies	24,230	43,827	22,546	27,500	23,700	29,000
Other Services & Charges	28,252	28,183	22,845	25,300	55,900	33,900
Capital Outlay	6,709	-	-	10,440	-	-
<i>Total Disease Invest. &amp; Response</i>	<i>569,839</i>	<i>664,202</i>	<i>558,489</i>	<i>695,367</i>	<i>793,249</i>	<i>808,179</i>
<b>TOTAL GENERAL FUND</b>	<b>8,829,302</b>	<b>8,860,752</b>	<b>9,362,103</b>	<b>11,296,571</b>	<b>11,938,049</b>	<b>12,066,664</b>
<i>Percent Change from Previous Year</i>	<i>-0.1%</i>	<i>0.4%</i>	<i>5.7%</i>	<i>20.7%</i>	<i>5.7%</i>	<i>1.1%</i>
<b>121 LOW INCOME HOUSING FUND</b>						
Other Services & Charges	-	14,000	245,319	614,580	410,000	410,000
<i>Total Low Income Housing Fund</i>	<i>-</i>	<i>14,000</i>	<i>245,319</i>	<i>614,580</i>	<i>410,000</i>	<i>410,000</i>
<i>Percent Change From Previous Year</i>	<i>0.0%</i>	<i>0.0%</i>	<i>1652.3%</i>	<i>150.5%</i>	<i>-33.3%</i>	<i>0.0%</i>
<b>122 HOMELESS HOUSING FUND</b>						
<b>Homeless Housing Operations</b>						
Other Services & Charges	-	-	9,900	350,000	300,000	330,000
Operating Transfers	-	-	-	-	20,000	20,000
<i>Total Homeless Housing Operations</i>	<i>-</i>	<i>-</i>	<i>9,900</i>	<i>350,000</i>	<i>320,000</i>	<i>350,000</i>
<i>Percent Change from Previous Year</i>	<i>0.0%</i>	<i>0.0%</i>	<i>0.0%</i>	<i>3435.4%</i>	<i>-8.6%</i>	<i>9.4%</i>
<b>TOTAL HEALTH</b>	<b>8,829,302</b>	<b>8,874,752</b>	<b>9,617,322</b>	<b>12,261,151</b>	<b>12,668,049</b>	<b>12,826,664</b>
<i>Percent Change from Previous Year</i>	<i>-0.1%</i>	<i>0.5%</i>	<i>8.4%</i>	<i>27.5%</i>	<i>3.3%</i>	<i>1.3%</i>

## Services

### Administration

#### **Community Health Assessment**

Regular and systematic process of collecting, analyzing and making available information on the health of a community, including statistics on health status and community health needs, and the conduct of epidemiological and other studies of health problems.

#### **Vital Records**

The Vital Records program is responsible for the registration of all deaths occurring in Whatcom County, the issuance of burial permits, and the issuance of certified birth and death certificates..

### Community Health

#### **Parent & Child Services**

Comprehensive health promotion and support services for pregnant women and families.

#### **HIV/AIDS**

Health promotion activities to decrease high risk behaviors and referrals to services for persons who are HIV positive.

#### **Public Health Nutrition**

Provides supplemental foods, nutrition education and community referrals to low income participants.

#### **Oral Health**

Provides support and facilitation for local Oral Health Coalition and increases the access to and utilization of dental services for Medicaid eligible children under six.

#### **Immunization Program**

Administration of vaccine to target populations; distribution and oversight of state-supplied vaccines; consultation and quality assurance activities with health care providers.

### Disease Response & Control

#### **Tuberculosis Program**

Screening, diagnosis, treatment, and prevention of tuberculosis; consultation to and education of health care providers and the public.

#### **Communicable Disease Investigation/Surveillance**

Case investigation, contact notification, and surveillance for notifiable conditions. Education and consultation to the health care providers, and general public.

#### **Emergency and Bioterrorism Response Planning**

Public health emergency preparedness, response and recovery.

Services continued

Environmental Health

**Drinking Water**

Ensures safe drinking water for public through approval of water sources, public water supplies, well construction and investigation of disease outbreaks and complaints.

**Food Protection**

Prevention of food borne disease through inspection of food services and education of food workers. Investigation of food borne illness and complaints.

**Living Environment Program**

Drowning prevention, injury prevention and investigation of exposures to diseases like rabies, West Nile Virus and Lyme Disease, investigation of complaints.

**On-Site Sewage Control**

Permitting and inspection of on-site sewage systems.

**Solid Waste Monitoring**

Oversight of solid waste management and disposal practices through public education and regulatory enforcement.

**Chemical/Physical Hazards**

Public health response to chemical releases, public exposure to toxic substances and investigations of contaminated sites.

Human Services

**Mental Health Services Administration**

Local contractors provide an array of mental health services that are not provided by the North Sound Mental Health Administration (NSMHA). Coordinates in the administration, planning, and quality assurance of NSMHA-funded services in Whatcom County.

**Developmental Disabilities Services**

Contracted employment training, day program and early intervention services for people with developmental disabilities.

**2060 Housing Program**

Administer distribution of "2060" housing funds for low income housing.

**2163 Homeless Housing**

The Homeless Housing program was created by the legislature to reduce homelessness in Washington State. This program administers distribution of the 2163 housing funds.

Services continued

**Substance Abuse Treatment Services**

Whatcom County provides a comprehensive continuum of substance abuse services through subcontracts with local private and nonprofit treatment providers.

**Substance Abuse Crisis Services**

Local contractors provide comprehensive crisis intervention services, including social detoxification, outreach & engagement, case management, and involuntary commitment services.

**Substance Abuse Prevention Program**

The Substance Abuse Prevention Program provides services directly and through “best practice” service contracts. All prevention activities work to reduce the risks and increase protective factors in program participants.

**Tobacco Prevention Program**

Program activities reduce youth access to tobacco, increase resources for quitting, reduce second hand smoke, and increase local capacity to prevent the use of tobacco products.