

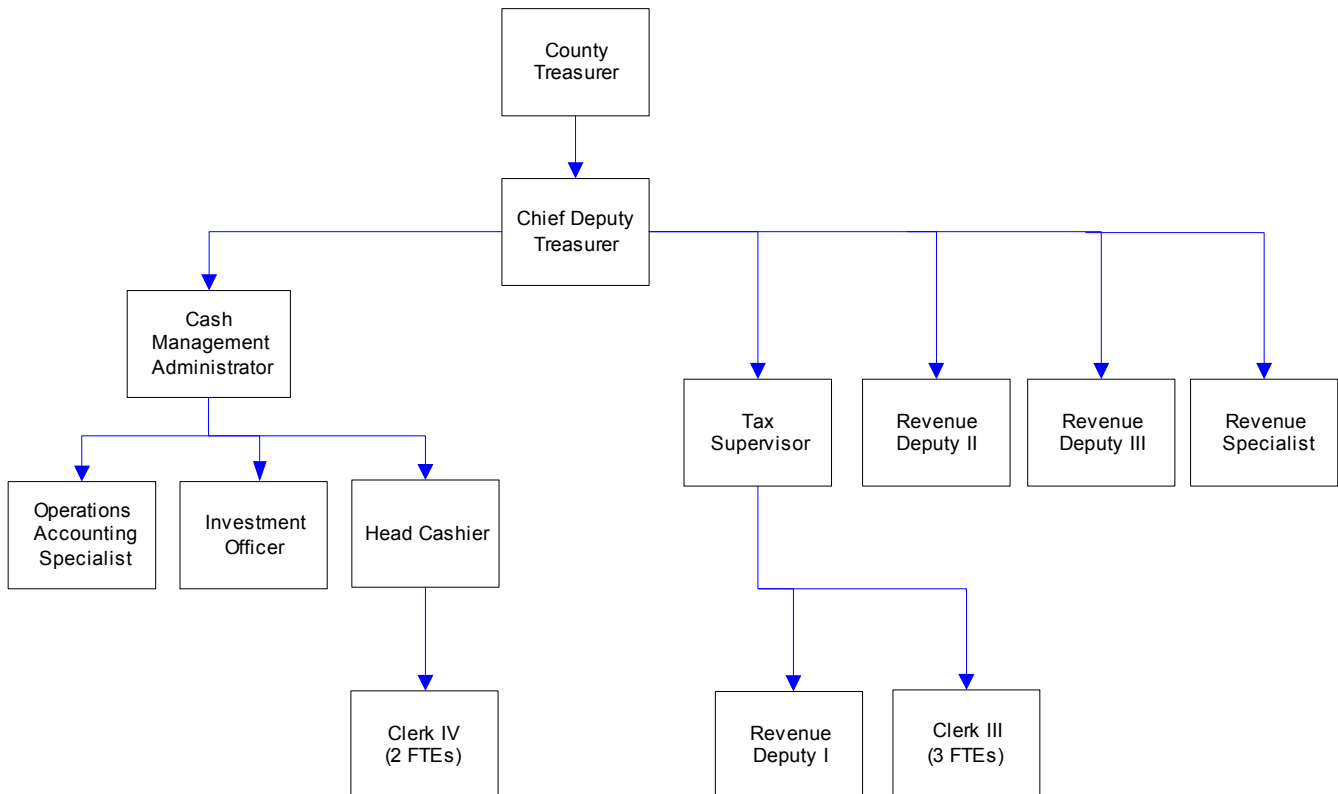
County Treasurer's Office

An elected official, the County Treasurer collects taxes, reports, invests and manages all monies and debt for Whatcom County and all other junior and special purpose districts. This office provides banking services to the organization; forecloses on property for delinquent taxes; maintains an inventory of county-owned property; conducts property sales.

FTE's for this department

Year	2001	2002	2003	*2004	*2005	*2006	*budget
FTE	15.50	15.50	15.50	16.00	16.00	16.00	

The chart below shows the organizational structure for 2005 only.



Mission & Objectives

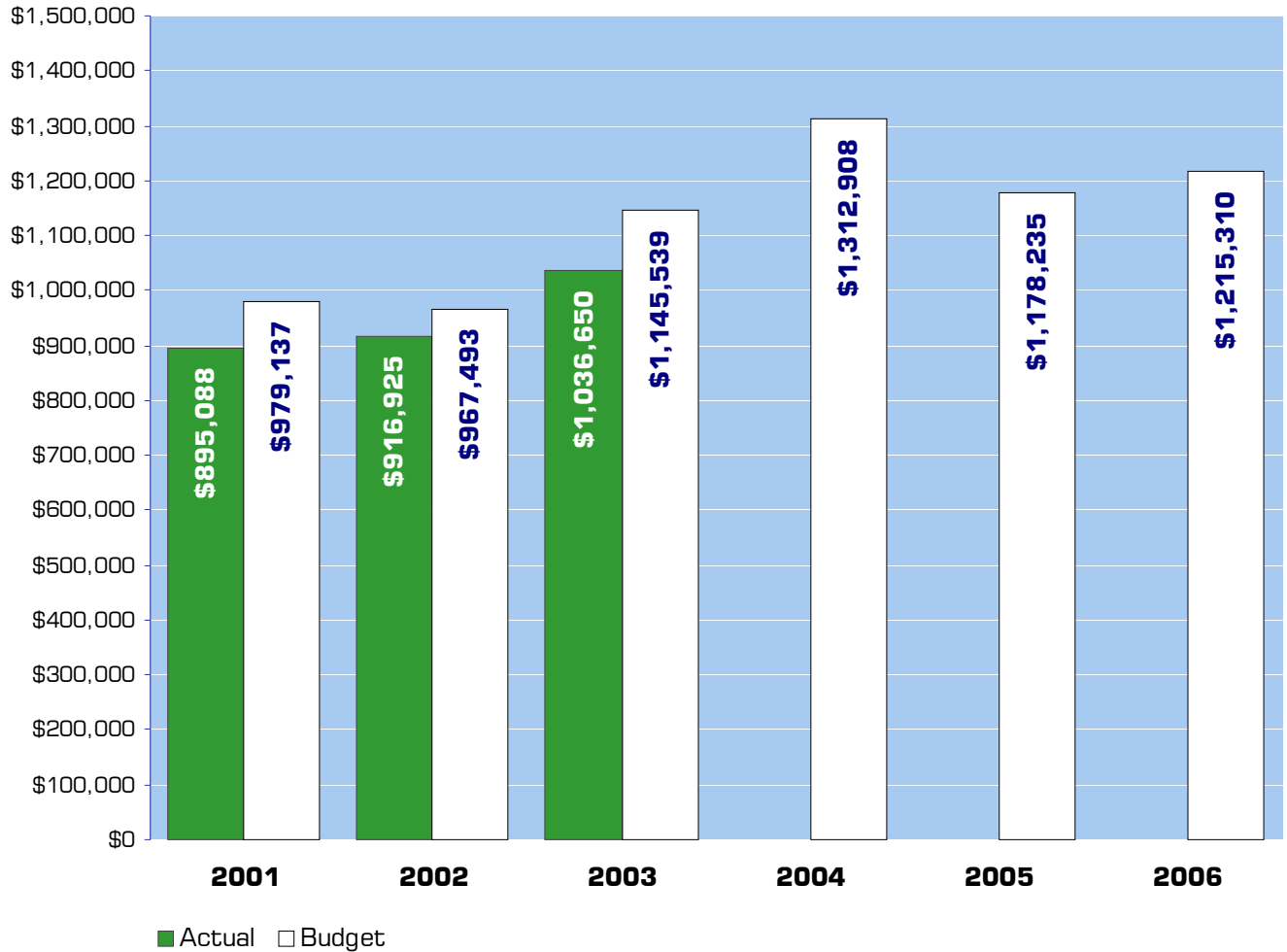
Mission

Efficiently and effectively collect, report, invest, and manage all monies and debt for Whatcom County and all other junior and special purpose districts. Provide exemplary service to all of our customers by being responsive, courteous, and knowledgeable.

Objectives

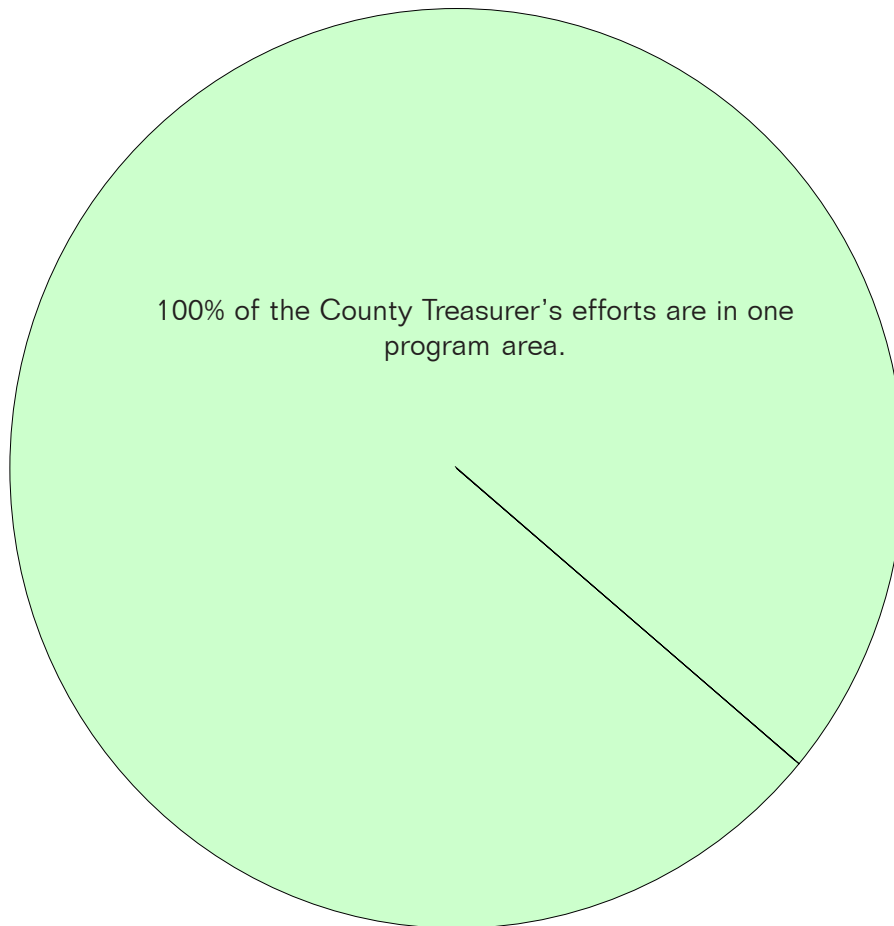
- Mail tax statements by February 14th.
- Deposit all funds received from districts and departments within 24 hours.
- Collect 97% of current year tax receivables.
- Conduct and train county cash handlers bi-annually.
- Deliver financial reports to all departments and districts by the 10th business day each month.
- Deposit checks received in amounts of \$100,000 or more the same day received.
- Complete processing of tax payments within five working days of deadline.
- Train 25% of the department heads or elected officials and their supervisor(s) responsible for cash handlers regarding cash handling policies and procedures.

Expenditure Trends



NOTE: Capital expenditures and interfund operating transfers are not shown to more accurately reflect ongoing operational costs.

2005-2006 Budget by Program



NOTE: Capital expenditures and interfund operating and residual equity transfers are not shown to more accurately reflect ongoing operational costs.

Program Summary

	Actual 2001	Actual 2002	Actual 2003	Budget 2004	Budget 2005	Budget 2006
OPERATIONS						
General Fund						
3300 Treasurer	895,088	916,925	1,036,650	1,312,908	1,178,235	1,215,310
<i>Total Treasurer Operations</i>	895,088	916,925	1,036,650	1,312,908	1,178,235	1,215,310
CAPITAL						
General Fund						
3300 Treasurer	2,849	-	-	-	-	-
<i>Total Treasurer Capital</i>	2,849	-	-	-	-	-
TRANSFERS						
General Fund						
3300 Treasurer	6,501	-	-	-	-	-
<i>Total Treasurer Transfers</i>	6,501	-	-	-	-	-
TOTAL TREASURER	904,438	916,925	1,036,650	1,312,908	1,178,235	1,215,310
<i>Percent Change from Previous Year</i>	2.0%	1.4%	13.1%	26.6%	-10.3%	3.1%

2005-2006 Funding Sources

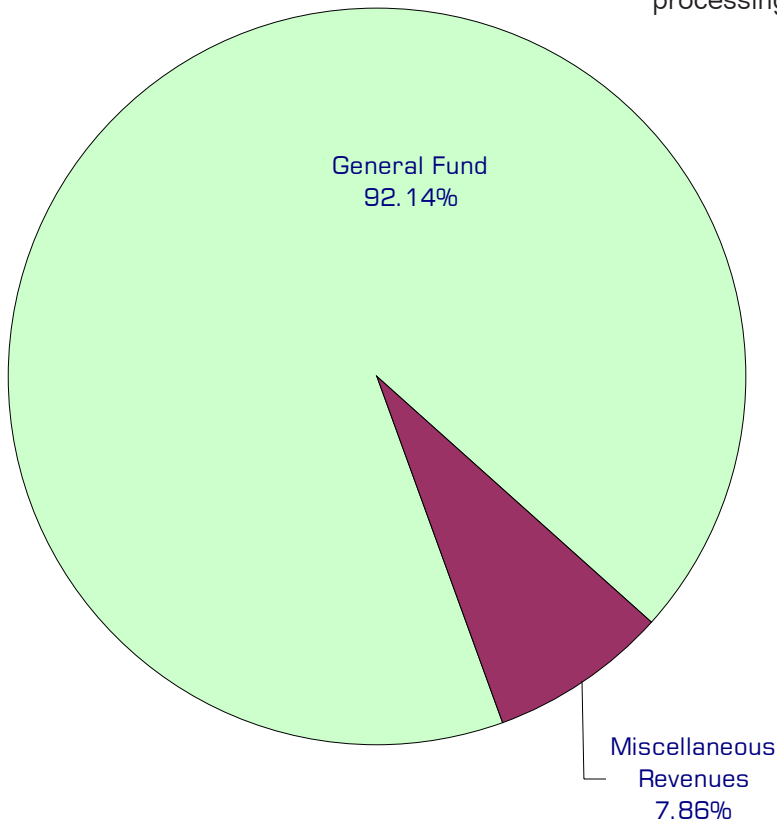
	2005	2006
General Fund	1,094,519	1,110,794
Miscellaneous Revenues	83,716	104,516
Total Funding	1,178,235	1,215,310

General Fund

Undedicated General Fund resources.

Miscellaneous Revenue

The Treasurer collects small amounts of revenue from a variety of sources, such as charges on returned checks, tax collection fees, printing and duplicating charges and passport processing fees.



Performance / Activity Measures

	Actual 2001	Actual 2002	Actual 2003	Projected 2004	Projected 2005	Projected 2006
Financial Transaction Activity	\$1.5 billion	\$1.3 billion	\$1.4 billion	\$1.4 billion	\$1.5 billion	\$1.5 billion
Tax Collection Rate	96.9%	96.4%	96.9%	96.9%	96.7%	96.7%
Alternative payment options used	125,000	133,500	137,000	140,000	142,000	144,000
Bonds Redeemed	\$12,431,000	\$18,982,000	\$15,400,000	\$24,198,000	\$17,770,000	\$17,543,000
Bonds Issued	\$31,426,000	\$21,350,000	\$ 7,661,000	\$20,000,000	\$20,000,000	\$20,000,000
Foreclosure Parcels	341	209	130	122	200	200
Taxpayer & Address Changes	41,126	39,880	56,135	42,000	42,000	42,000
Cancellations & Supplementals	2,700	2,800	2,347	3,500	4,000	4,200
Miscellaneous Receipts	9,992	9,623	9,500	10,500	11,000	12,000
Segregations & Combinations	583	589	1,232	1,300	1,375	1,400
Refunds	2,002	1,681	2,068	2,000	2,000	2,000
Special Assessment Accounts	102,061	102,897	103,436	11,563	12,000	12,000
Tax Accounts	103,050	103,719	103,567	103,939	104,500	105,000
Excise Documents	9,992	11,300	13,139	12,500	12,000	12,000
Warrants Redeemed	95,210	94,100	90,000	89,000	88,000	87,000
Hours of Administrative Burden			750	1,000	750	500
Passport Applications				1,250	1,300	1,400

Expenditures Summary

	Actual 2001	Actual 2002	Actual 2003	Budget 2004	Budget 2005	Budget 2006
GENERAL FUND						
3300 Treasurer						
Salaries & Wages	455,943	468,719	530,935	584,027	593,002	603,577
Benefits	125,996	127,895	147,444	176,547	200,039	223,439
Supplies	21,865	14,064	12,713	41,990	23,117	20,617
Other Services & Charges	291,284	306,247	345,558	510,344	362,077	367,677
Capital Outlay	2,849	-	-	-	-	-
Operating Transfers	6,501	-	-	-	-	-
<i>TOTAL TREASURER</i>	904,438	916,925	1,036,650	1,312,908	1,178,235	1,215,310
<i>Percent Change from Previous Year</i>	2.0%	1.4%	13.1%	26.6%	-10.3%	3.1%

Services

Process Passport Applications for the Federal Department of State

The Treasurer's office is a certified passport agency. We process passport applications, making sure the form is completed properly, verifying identification documentation, and forward these applications to the Department of State for passport issuance.

Tax Administration and Collection

Billing, collection, receipting and distribution of all property taxes and special assessments for all taxing districts. Administration and collection of taxes under various state and local taxing authorities.

Financial Services

Provides investment portfolio management, cash management, debt management, financial reporting and reconciliation services.

