

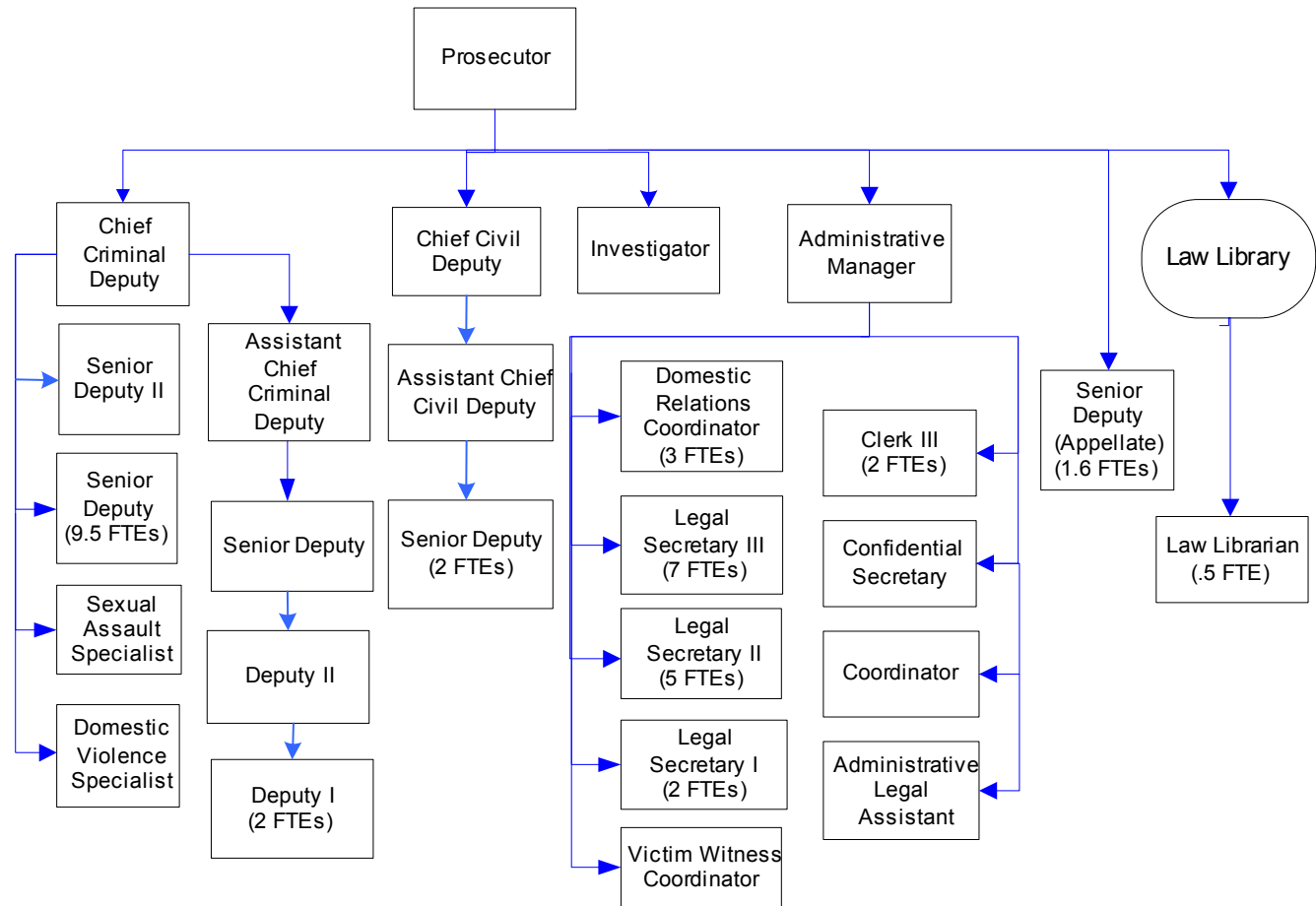
Prosecuting Attorney

An elected official, the Prosecuting Attorney prosecutes criminal acts within the county, provides legal advice and legal services to county officials and staff, and represents and defends the county. The Prosecuting Attorney's Office also provides assistance to victims of crime, sexual abuse and domestic violence.

FTE's for this department

Year	2001	2002	2003	*2004	*2005	*2006	*budget
FTE	48.50	47.50	48.60	48.60	50.60	50.60	

The chart below shows the organizational structure for 2005 only.



Mission & Objectives

Mission

Prosecuting Attorney

Provide just, equitable and high quality legal representation, effectively and efficiently, when prosecuting criminal actions, when advising or defending county officials or employees on civil matters that pertain to or affect the interests of the county and when carrying out statutorily mandated duties on behalf of the State of Washington.

Seek to ensure that justice is accomplished within the framework of the United States constitution, the state constitution and the laws of this state. Provide services to victims and witnesses to ensure their fair treatment within the criminal justice system. Identify, locate and compel the absent parents of children receiving state assistance to pay for the support of their children instead of the public.

Assist in developing goals and objectives for the criminal justice system that ensure delivery of services to the community that enhance public safety.

Law Library

Provide a fundamental level of current legal materials unavailable elsewhere in the county. Meet the legal research needs of the courts, the bar association, county employees and the citizens of Whatcom County. To implement this mission, the library provides access to legal information sources in the most cost-effective manner through print or electronic means and through interlibrary loan.

Objectives

- Identify and implement procedures that use technology to maximize efficiency and ensure production of consistent, high quality work product. To achieve this, staff resources have been committed to research, design and implement innovative technological solutions that improve efficiency in case processing. In 2005-2006, this means complete the implementation of the Laserfiche RMS, including the workflow component.
- Maintain use of the following performance measures as a means to define sufficient staffing and funding levels:
 - Felony cases** - 10 working days from receipt of incident report to charging decision. The 2004 level currently stands at 22 days. In 2005 the goal is 17 days.
 - Juvenile Division** - 7 working days from receipt of incident report to charging decision. The 2004 level currently stands at 35. In 2005 the goal is 29 days.
 - District Court Division** - 150 days from filing date to final disposition which was established commencing January 1, 2000. The 2004 level currently stands at 191. In 2005 this measure is expected to come in at 192 days.
- Create and deploy a digital brief bank utilizing software, with natural language selection search capabilities, that facilitates retrieval by appeal topic or legal issue.

Objectives continued

- Develop and implement performance measures for all divisions in the office. Specific focus in 2005, will continue to be on defining measures for the Victim/Witness Unit and the Civil Division.
- Allocate sufficient departmental staff resources, as necessary, to assure the success of the MIS data integration project.

Drug Fund

- Ensure continuation and possible expansion of cooperative agreements with DEA and Customs for equitable sharing of forfeited assets.
- Utilize fund resources to continue the aggressive prosecution of individuals who violate Title 69, Violations of Uniform Controlled Substances Act.

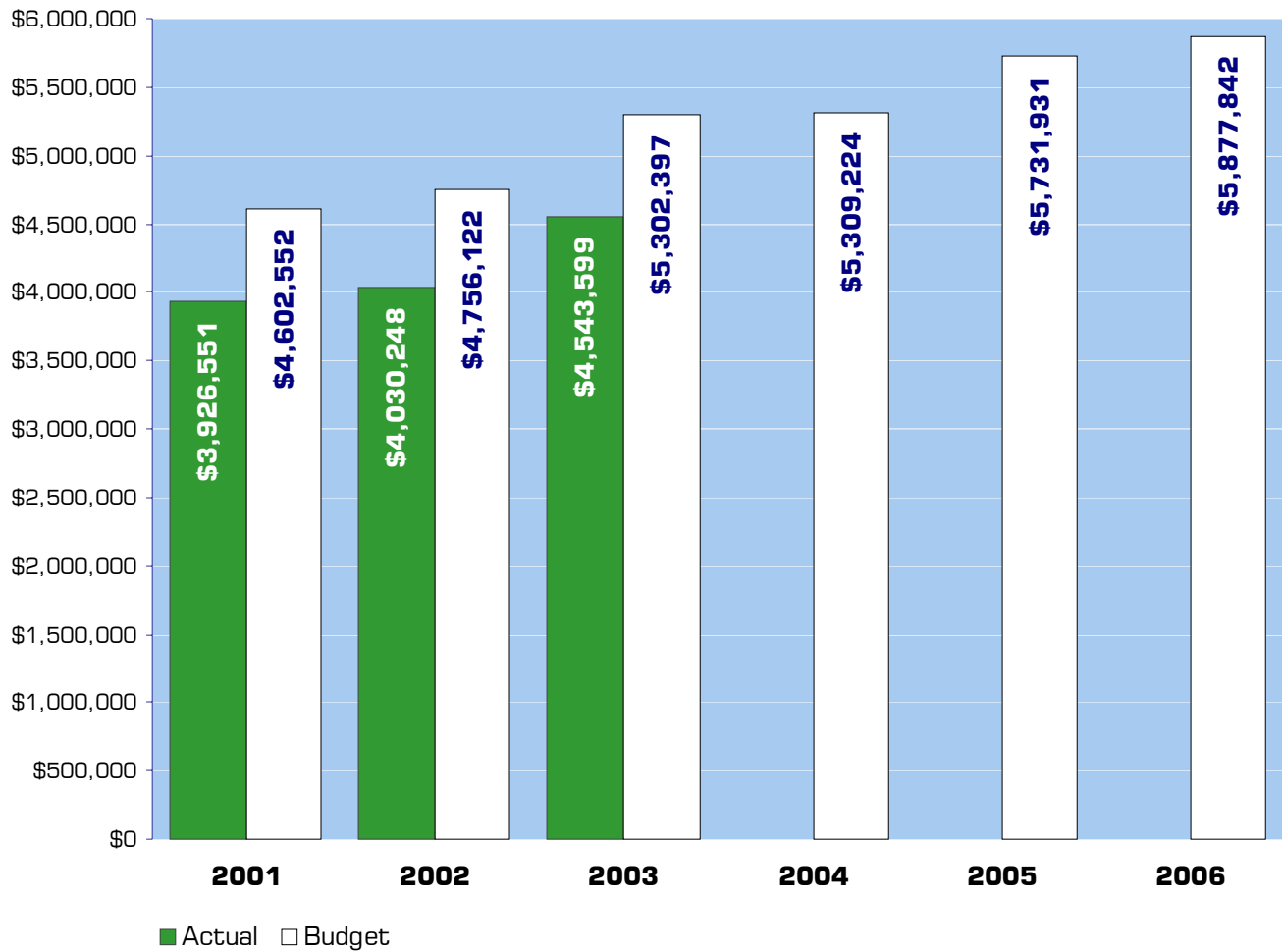
Victim / Witness

- Review workloads and paperflows with a view toward restructuring, reorganization and/or expansion of the unit.

Law Library

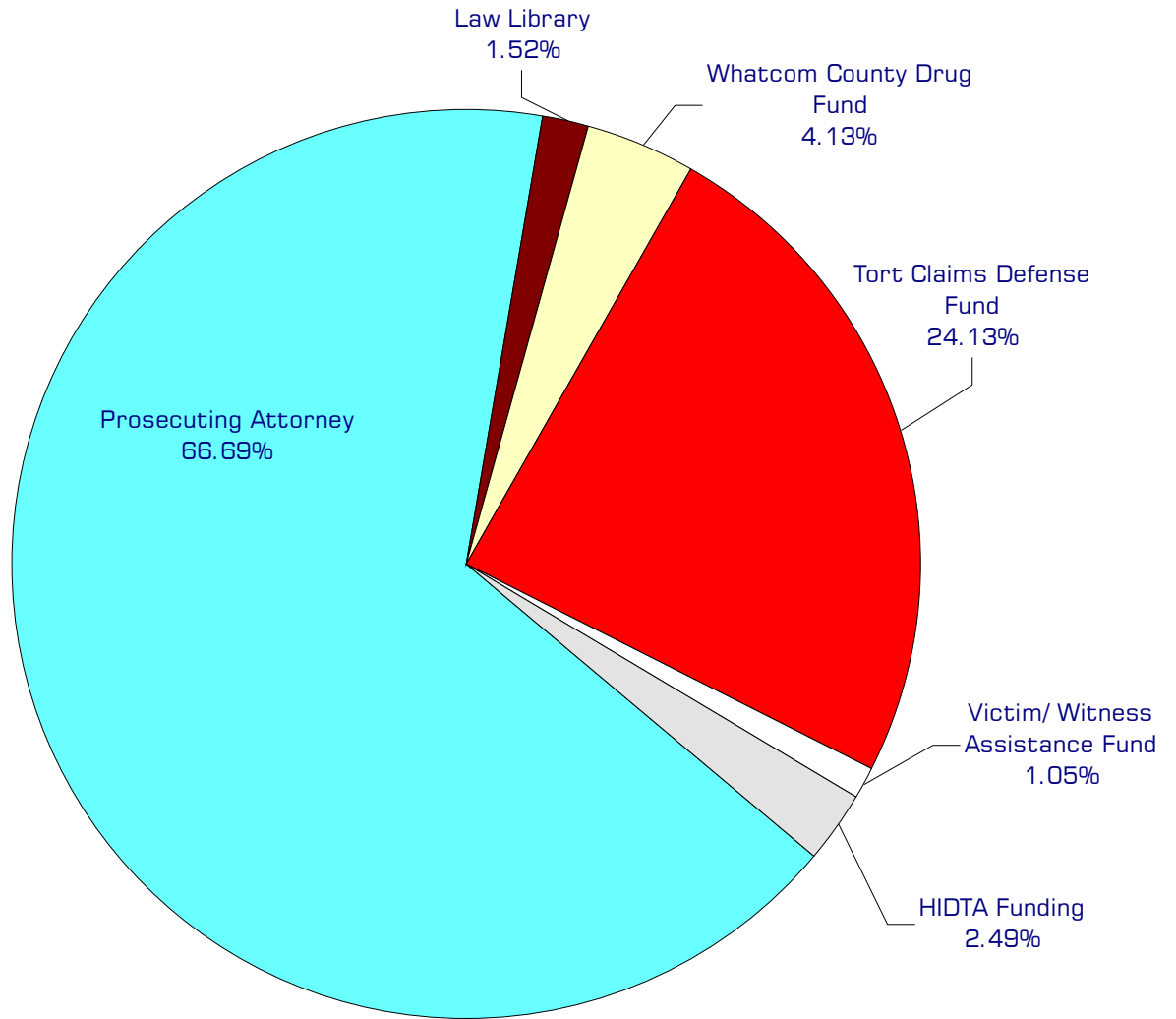
- Provide a fundamental level of current legal materials unavailable elsewhere in the county, to meet the legal research needs of the courts, the bar, county employees and citizens of Whatcom County.
- Provide access to legal information sources in the most cost-effective manner through print or electronic formats maintained in or accessed through the library, interlibrary loan, and referral to document delivery sources.
- Participate in cooperative efforts with other public and academic libraries, community agencies, and other public institutions to improve public access to legal information.
- Evaluate and apply information technologies to maximize efficient and cost-effective access to legal research resources, and to facilitate management of the Law Library's information resources.
- Seek out additional funding sources to keep pace with rising costs of legal materials.

Expenditure Trends



NOTE: Capital expenditures and interfund operating transfers are not shown to more accurately reflect ongoing operational costs.

2005-2006 Budget by Program



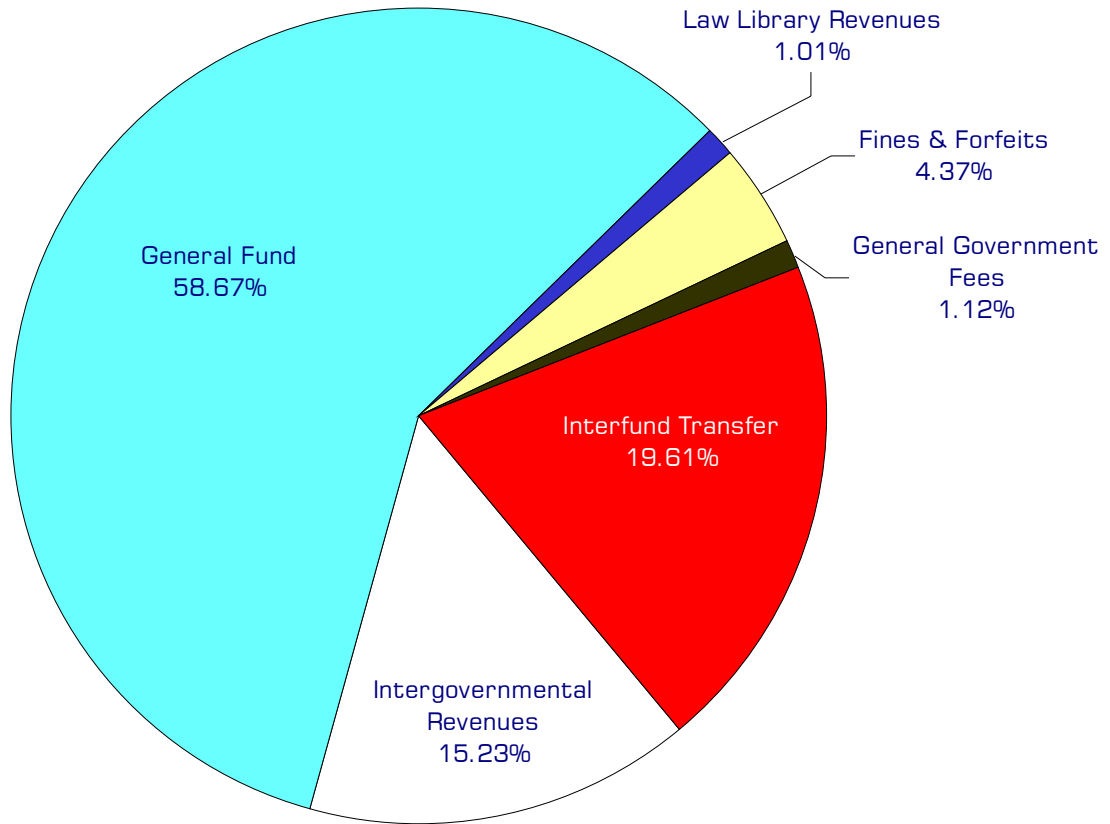
NOTE: Capital expenditures and interfund operating and residual equity transfers are not shown to more accurately reflect ongoing operational costs.

Program Summary

	Actual 2001	Actual 2002	Actual 2003	Budget 2004	Budget 2005	Budget 2006
OPERATIONS						
General Fund						
2600 Pros Atty/Support Enforcmt	3,100,258	3,191,817	3,357,218	3,578,514	3,796,101	3,946,093
2630 Law Library	83,189	90,439	89,101	80,829	86,824	89,082
2640 PA-HIDTA Funding	113,139	113,228	125,885	123,489	141,169	147,879
507 ADS - General Liability	457,255	469,323	762,126	1,285,043	1,400,727	1,400,727
142 Victim/Witness Assist Fund	49,960	54,226	51,932	56,349	60,110	62,061
165 Whatcom Co. Drug Fund	122,750	111,215	157,337	185,000	247,000	232,000
<i>Total Prosecuting Atty Operations</i>	3,926,551	4,030,248	4,543,599	5,309,224	5,731,931	5,877,842
CAPITAL						
General Fund						
2600 Pros. Atty/Support Enforcmt	10,007	-	-	14,000	-	-
165 Whatcom Co. Drug Fund	16,731	2,167	63,758	100,000	50,000	50,000
<i>Total Prosecuting Attorney Capital</i>	26,738	2,167	63,758	114,000	50,000	50,000
TRANSFERS						
General Fund						
2600 Pros. Atty/Support Enforcmt	29,294	1,500	1,500	1,500	1,500	1,500
2630 Law Library	198	-	-	-	-	-
2640 PA-HIDTA Funding	1,155	-	-	-	-	-
507 ADS - General Liability	118,840	118,840	119,372	122,788	125,532	125,532
142 Victim/Witness Assist Fund	58,682	71,651	53,844	60,815	63,986	63,986
165 Whatcom Co. Drug Fund	348,233	377,403	414,330	424,400	440,472	426,407
<i>Total Pros Attorney Transfers</i>	556,402	569,394	589,046	609,503	631,490	617,425
TOTAL PROSECUTING ATTORNEY	4,509,691	4,601,809	5,196,403	6,032,727	6,413,421	6,545,267
<i>Percent Change from Previous Year</i>	6.7%	2.0%	12.9%	16.1%	6.3%	2.1%

2005-2006 Funding Sources

	2005	2006
Intergovernmental Revenues	828,006	840,218
General Fund	3,140,715	3,287,463
Law Library Revenues	55,373	55,373
Fines & Forfeits	247,000	232,000
General Government Fees	60,110	62,061
Interfund Transfer	1,074,157	1,074,157
*Fund Balance	326,570	326,570
Total Funding	5,731,931	5,877,842



*Fund balance is not included in the above chart.

Funding Sources continued

Grants

The Prosecuting Attorney's Office receives various federal and state grants for specific operations. The federal government provides approximately \$615,000 annually for Child Support Enforcement and \$145,000 annually for drug traffic prosecution. The department receives \$12,000 per year as part of Washington State's Multi-Jurisdictional Narcotics Task Force Grant. Additionally, pursuant to RCW 36.17.020, Washington State pays for one half of the Prosecuting Attorney's salary.

General Fund

Undedicated General Fund resources.

Law Library Revenues

The Law Library receives a fee of \$6 on each District Court civil filing and \$12 for each Superior Court civil filing. The library also receives donations and facility rental revenue.

Fines & Forfeits

The Drug Fund receives revenue from fines and forfeits of drug-related seized assets.

General Government Fees

Fee revenues collected by District Court and Superior Court, which are dedicated to support the Victim/Witness Fund.

Interfund Transfer

Each county department contributes a set amount for tort claims. These contributions total \$1,074,157. Reserves for tort claims are maintained in the Administrative Services Fund.

Fund Balance

Current year operations will result in a projected decrease to the Prosecuting Attorney's dedicated fund balance in the Administrative Services - Tort Fund for liability insurance.

Performance / Activity Measures

	Actual 2001	Actual 2002	Actual 2003	Projected 2004	Projected 2005	Projected 2006
District Court Cases - days to disposition (goal is 180 or less)	164	166	186	191	192	192
Superior Court Cases- days to charging (goal is 10 or less)	25	21	23	22	17	17
Juvenile Cases- days to charging (goal is 7 or less)	53	46	29	35	29	29
<i>Law Library</i>						
Volumes	18,660	20,650	22,000	22,500	23,000	23,500
Interlibrary loan requests	60	60	60	40	40	40
Attorney visits	1,500	1,500	1,525	1,525	1,525	1,525
Non-attorney visits	1,600	1,700	1,700	1,700	1,725	1,725
Requests for assistance and information	1,600	1,600	1,625	1,625	1,650	1,650
Library hours of staff present per week	20	20	20	20	20	20
Subscriptions	41	37	35	30	30	30
Usage of CD-ROM computer - times accessed	2,750	2,750	3,000	3,000	3,000	3,000
<i>Tort Claims</i>						
General Liability - Claims against Whatcom County	44	65	70	56	59	62

Expenditures Summary

	Actual 2001	Actual 2002	Actual 2003	Budget 2004	Budget 2005	Budget 2006
GENERAL FUND						
2600 Prosecuting Attorney						
Salaries & Wages	2,092,145	2,253,866	2,365,617	2,504,128	2,617,523	2,666,551
Benefits	549,900	525,886	549,470	646,710	762,127	853,212
Supplies	58,898	60,655	54,054	70,575	64,610	60,650
Other Services & Charges	399,315	351,410	388,077	357,101	351,841	365,680
Capital Outlay	10,007	-	-	14,000	-	-
Operating Transfers	27,794	-	-	-	-	-
Residual Equity Transfers	1,500	1,500	1,500	1,500	1,500	1,500
<i>Total Prosecuting Attorney</i>	<i>3,139,559</i>	<i>3,193,317</i>	<i>3,358,718</i>	<i>3,594,014</i>	<i>3,797,601</i>	<i>3,947,593</i>
<i>Percent Change from Previous Year</i>	<i>8.1%</i>	<i>1.7%</i>	<i>5.2%</i>	<i>7.0%</i>	<i>5.7%</i>	<i>3.9%</i>
2640 PA-HIDTA Funding						
Salaries & Wages	88,626	91,155	101,286	97,893	109,169	111,909
Benefits	24,513	22,073	24,599	25,596	32,000	35,970
Operating Transfers	1,155	-	-	-	-	-
<i>Total HIDTA Funding</i>	<i>114,294</i>	<i>113,228</i>	<i>125,885</i>	<i>123,489</i>	<i>141,169</i>	<i>147,879</i>
<i>Percent Change from Previous Year</i>	<i>13.2%</i>	<i>-0.9%</i>	<i>11.2%</i>	<i>-1.9%</i>	<i>14.3%</i>	<i>4.8%</i>
LAW LIBRARY						
2630 Law Library Operations						
Salaries & Wages	15,205	17,250	19,004	19,660	20,422	21,190
Benefits	6,703	6,556	8,750	9,787	10,904	12,137
Supplies	37,831	40,289	36,370	29,498	32,505	32,510
Other Services & Charges	23,450	26,344	24,977	21,884	22,993	23,245
Operating Transfers	198	-	-	-	-	-
<i>Total Law Library</i>	<i>83,387</i>	<i>90,439</i>	<i>89,101</i>	<i>80,829</i>	<i>86,824</i>	<i>89,082</i>
<i>Percent Change from Previous Year</i>	<i>9.9%</i>	<i>8.5%</i>	<i>-1.5%</i>	<i>-9.3%</i>	<i>7.4%</i>	<i>2.6%</i>
<i>Total General Fund</i>	<i>3,337,240</i>	<i>3,396,984</i>	<i>3,573,704</i>	<i>3,798,332</i>	<i>4,025,594</i>	<i>4,184,554</i>
<i>Percent Change from Previous Year</i>	<i>8.3%</i>	<i>1.8%</i>	<i>5.2%</i>	<i>6.3%</i>	<i>6.0%</i>	<i>3.9%</i>
507 ADMIN SERVICES - GENERAL LIABILITY						
Other Services & Charges	457,255	469,323	762,126	1,285,043	1,400,727	1,400,727
Operating Transfers	118,840	118,840	119,372	122,788	125,532	125,532
<i>Total Adm Svcs - Gen'l Liability</i>	<i>576,095</i>	<i>588,163</i>	<i>881,498</i>	<i>1,407,831</i>	<i>1,526,259</i>	<i>1,526,259</i>
<i>Percent Change from Previous Year</i>	<i>-8.4%</i>	<i>2.1%</i>	<i>49.9%</i>	<i>59.7%</i>	<i>8.4%</i>	<i>0.0%</i>
142 VICTIM/ WITNESS FUND						
Salaries & Wages	34,679	38,569	35,635	37,596	39,888	39,948
Benefits	9,502	9,878	10,518	11,676	13,472	14,977
Other Services & Charges	5,779	5,779	5,779	7,077	6,750	7,136
Operating Transfers	58,682	71,651	53,844	60,815	63,986	63,986
<i>Total Victim/Witness Fund</i>	<i>108,642</i>	<i>125,877</i>	<i>105,776</i>	<i>117,164</i>	<i>124,096</i>	<i>126,047</i>
<i>Percent Change from Previous Year</i>	<i>7.0%</i>	<i>15.9%</i>	<i>-16.0%</i>	<i>10.8%</i>	<i>5.9%</i>	<i>1.6%</i>

	Actual 2001	Actual 2002	Actual 2003	Budget 2004	Budget 2005	Budget 2006
165 DRUG FUND						
Salaries & Wages	-	1,107	-	-	-	-
Supplies	18,005	2,551	2,987	20,000	65,000	50,000
Other Services & Charges	104,745	107,557	154,350	165,000	182,000	182,000
Capital Outlay	16,731	2,167	63,758	100,000	50,000	50,000
Operating Transfers	348,233	377,403	414,330	424,400	440,472	426,407
<i>Total Drug Fund</i>	487,714	490,785	635,425	709,400	737,472	708,407
<i>Percent Change from Previous Year</i>	17.0%	0.6%	29.5%	11.6%	4.0%	-3.9%
TOTAL PROSECUTING ATTY	4,509,691	4,601,809	5,196,403	6,032,727	6,413,421	6,545,267
<i>Percent Change from Previous Year</i>	6.7%	2.0%	12.9%	16.1%	6.3%	2.1%

Services

Civil Practice

Provide legal counsel and representation to all county departments, the Executive's Office and the County Council.

Criminal Prosecution/Felony

Represents the State of Washington in the prosecution of adults and remanded juveniles who commit felony offenses. Assists authorities in determining probable cause, obtaining search warrants, interpretation and application of the law, and on case investigation issues.

Criminal Prosecution/Juvenile

Represent the interests of the State of Washington in the adjudication of juvenile offenders who commit felony or misdemeanor criminal acts, excluding criminal traffic misdemeanors committed by offenders over the age of sixteen.

Criminal Prosecution/Misdemeanor & Criminal Traffic

Represent the State of Washington in the prosecution of misdemeanor and criminal traffic offenses committed by adults and in criminal traffic matters committed by juveniles who are over the age of sixteen.

Paternity/Support Enforcement Unit

Represent the interest of the child and state in legal actions brought under RCW 26, to establish paternity and/or enforce the payment of child support in an effort to reduce public assistance expenditures.

Victim/Witness Unit

Provide information, assistance and advocacy to victims or witnesses in order to facilitate prosecution efforts.

Law Library

Interlibrary Loan/Resource Sharing

Provides access to legal research resources unavailable in this library and elsewhere in Whatcom County.

Law Library

Provides effective access to legal research materials to support the legal research needs of the courts, the bar, county administration, and the public in Whatcom County.