

Planning & Development Services

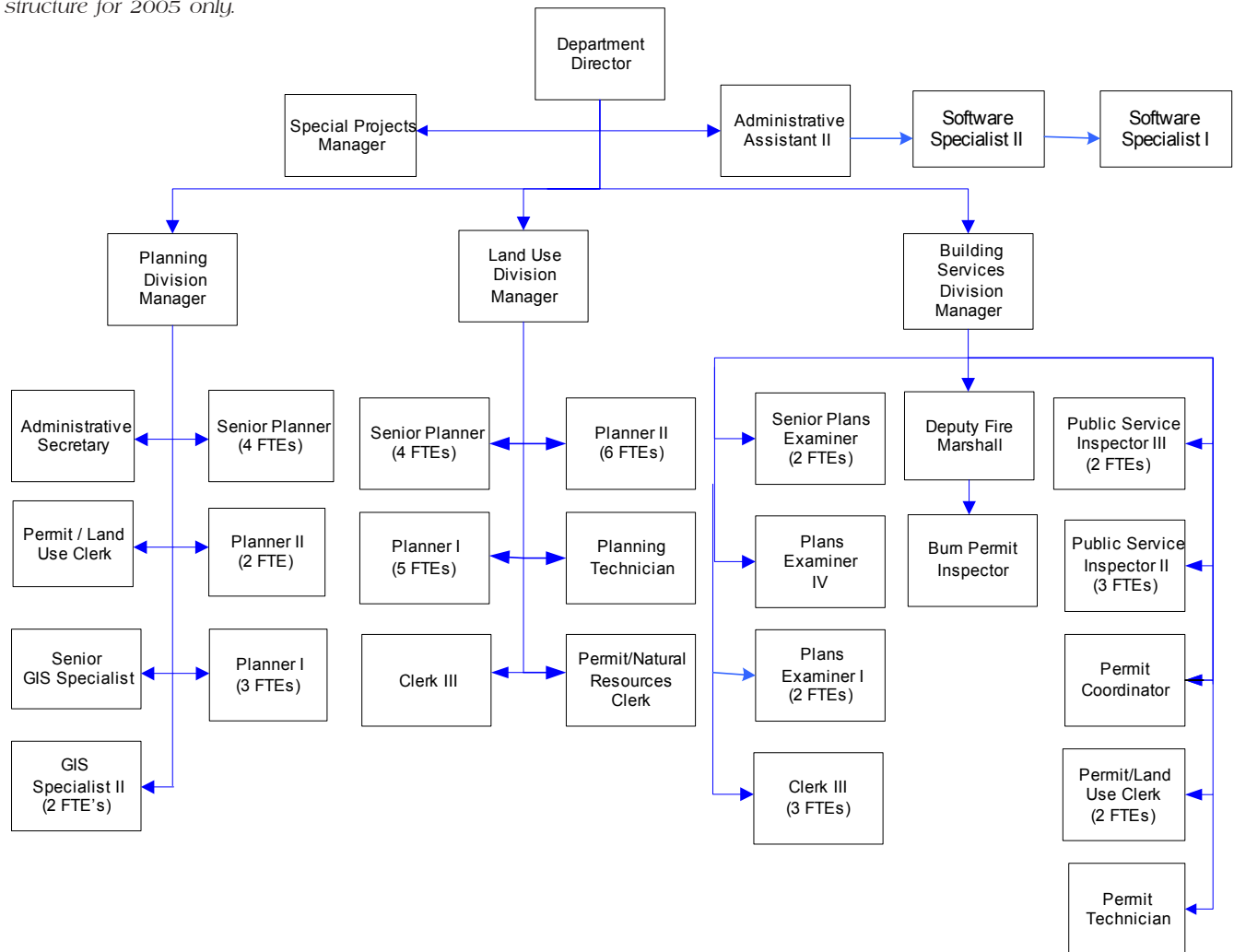
Divisions and their services are: Building Services (construction permits of all kinds, life safety code enforcement, plan check/inspection, burn permits, fire safety inspections); Land Use Services (pre-construction zoning, shorelines, SEPA, land use, critical areas, subdivisions, land use code enforcement); Planning Services (long range planning, comprehensive plans, growth management, water resources).

FTE's for this department

Year	2001	2002	2003	*2004	*2005	*2006
FTE	47.35	48.35	49.35	57.00	59.00	54.00

**budget*

The chart below shows the organizational structure for 2005 only.



Mission & Objectives

Mission

Building Services

Provide excellent customer service while administering laws, codes and policies that promote better building construction and greater safety for our community.

Land Use

Assist the public and other agencies in the implementation of the Comprehensive Plan, county policies and regulations including the following: subdivision, shoreline, environmental review, zoning codes, and natural resource protection. Perform these reviews in conjunction with Federal, State and County regulations as they relate to the physical and economic health of our county.

Planning

Enhance and protect the quality of life and comply with state and federal mandates by preparing land use, transportation and facility plans, policies and regulations to guide and regulate land development within Whatcom County. Provide information and assistance to advisory boards, legislative bodies and the County Executive regarding land use, natural resources, and economic development issues.

Objectives

Administration

- Seek greater public input from the Whatcom County community. Create more opportunities to interact directly with the community through sub-area planning efforts, participation in local community events and attendance at community forums. Learn from the past, offer visions and choices for the future, and recommend policies and actions that will promote and achieve the following:
 - Involve the citizens in transportation planning through the six-year transportation plan.
 - Involve county staff, citizens and businesses in understanding Land Use and Transportation linkages.
 - Involve citizens, businesses, and institutions in economic development planning and coordination.
- Create a dialog with the community regarding emerging trends.
- Provide accurate and timely service to the public using available resources by:
 - Ensuring all facets of the permit process are responsive to individual customer needs.
 - Maintaining a customer service focus by shifting employees to "service" our permit needs during peak periods of the construction and permitting seasons.
 - Supporting front counter improvements and One Stop Shop efforts.
 - Supporting Skills Enhancement Programs for the front counter staff.

Objectives continued

- Involve citizens in Whatcom County decisions by:
 - Creating a sustained effort at providing public information to sub areas of the county
 - Developing a higher standard of public outreach for all County/capital expenditure programs.
 - Developing an annual report to the Planning Commission per state law on development trends in the county.
 - Developing an annual report to the Planning Commission per state law on shorelines.
- Maintain and improve upon high levels of customer service by:
 - Developing annual training on customer service.
 - Developing measures to ascertain customer satisfaction.
 - Return to internal training efforts to build skills rapidly.
- Ensure compliance with federal and state laws including:
 - Growth Management Act RCW 36.70A, compliance with the annual update provisions, compliance with the seven-year update provisions.
 - Shoreline Management Act RCW 90.58, compliance with the updating provisions.
 - Watershed Management Act 90.82.
- Provide for greater harmony between the natural, built and human environments by:
 - Encouraging a high level of interdepartmental cooperation.
 - Encouraging ongoing dialogue between Whatcom County cities and the county.
 - Coordinating natural resource based issues consistent with the county's Comprehensive Plan and charter including coordination in Lake Whatcom, Lake Samish, Drayton Harbor and Birch Bay watersheds for special district considerations (such as shellfish).
 - Promoting adequate parks, open spaces, recreation and cultural resources.
 - Implementing the Whatcom County Comprehensive Plan for Open Space Planning Goals and Objectives through PDR/TDR/Covenants and other means.
 - Creating wetland banking opportunities.
- Coordination/Project Review:
 - Working with the Bicycle and Pedestrian Advisory Committee coordinating bike/pedestrian and transportation improvements.
 - Working with the Parks and Recreation and Open Space Planning group and coordinating associated improvements.

Objectives continued

- Support a healthy economic base by:
 - Coordinating implementation of the Whatcom County Community Economic Development Strategy (CEDDS).
 - Ensuring that Whatcom County has an adequate land supply to encourage appropriate economic development.
 - Promoting the economic health of natural resource based industries in the county.
 - Supporting rural based business needs.
 - Promoting conservation of the area's natural resources including shorelines and critical areas.
 - Implementing Competitiveness Council recommendations.
- Preserve and enhance unincorporated county neighborhoods and housing choices by:
 - Working with the Columbia Valley neighborhood to ensure safety and health codes are being followed.
 - Coordinating more closely with rural housing providers in rural sub-area planning districts of the county including: the Foothills; Birch Bay; Point Roberts; Lummi Island.
 - Working with Foothills to develop a rural employment and training center within the context of a small town planning effort.
- Seek creative solutions to regional planning problems/opportunities by:
 - Participating on the Council of Government's Regional Transportation Planning Organization.
 - Continuing to coordinate with Whatcom County cities.

- Prepare and administer fiscally responsible budgets by:
 - Augmenting the existing budget through grants.
 - Developing and testing new county programs on a small/pilot project scale.
 - Improving coordination efforts between federal, state and Whatcom County agencies to deliver services to the community.
 - Accurately evaluating community-wide trends through the assessment of census data, economic data building permit data and other relevant information as it becomes available.

Building Services

- Provide required services (including enforcement and plan checks) with courtesy, compassion and professionalism.
- Maintain high level of customer service by:
 - Monitoring counter and phone reception for customer service and cash receipting procedures.
 - Monitoring and tracking permits and providing backup of plan check during times of heavy workloads.
- Develop written policies and procedures for the functions of the Building Services Division, including plan check, front counter, inspections, phone reception, and fire reviews.
- Provide accurate and timely service to the public using available resources and temporary extra help when demand exceeds resource.
- Maintain residential plan review turnaround at 4 weeks or under.

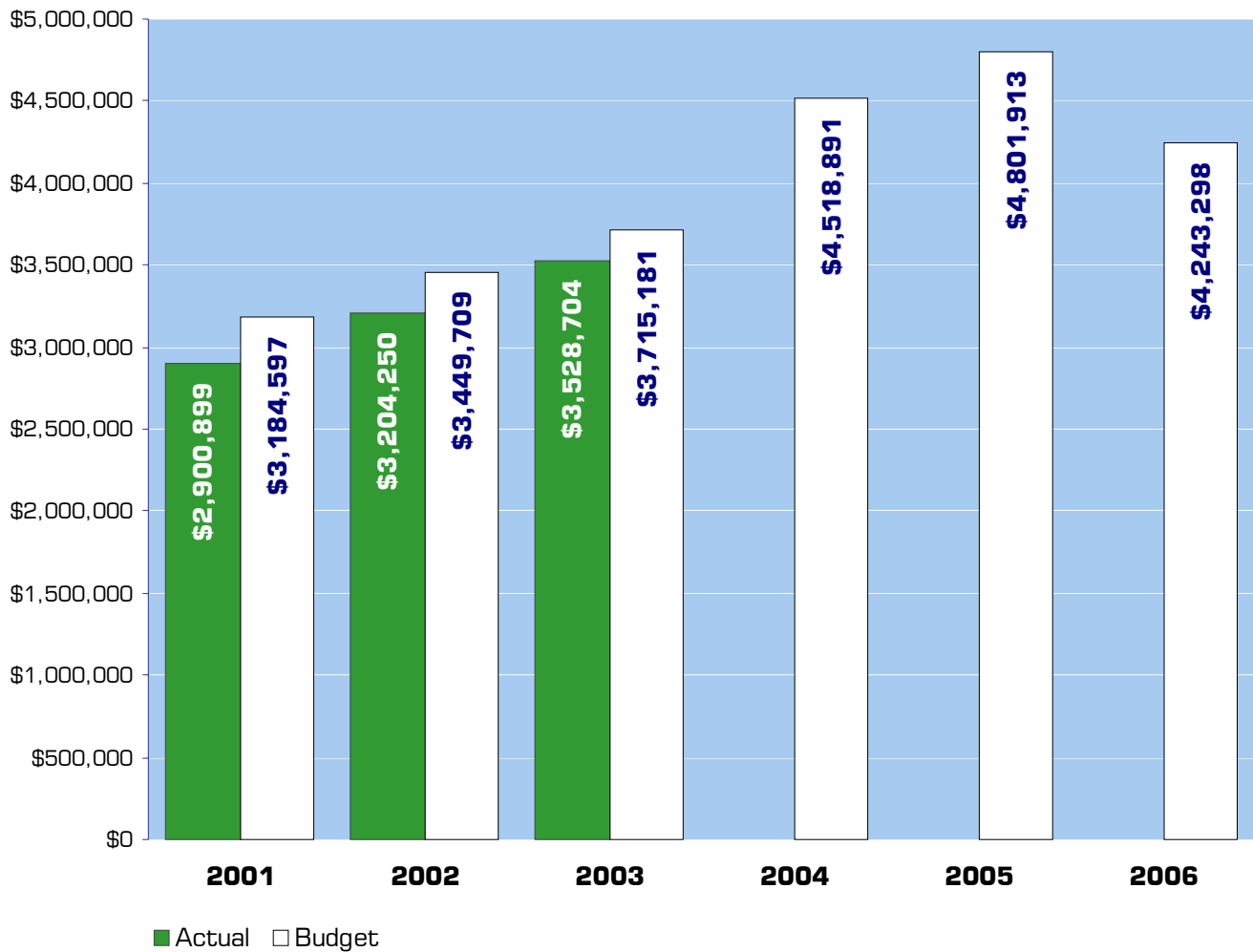
Objectives continued

- Maintain building inspection appointments with 24 hour notice.
- Process small commercial plans within 8 weeks or less of submittal.
- Process large commercial plans within 12 weeks of submittal.
- Continue joint arson investigation program with Sheriff's Office.
- Continue interagency partnerships for benefit of community and state (i.e., DNR & Emergency Response Team; State Arson Board, Region 3 Fire Investigation Task Force).
- Maintain open burning program with NWAPA.
- Update Building Services including Fire Marshall information on website.
- Implement "One Stop" in 2005 and monitor "One Stop" in 2006.
- Continue to provide training opportunities consistent with Skills Enhancement Program for PDS as developed with the Human Resources Office.
- Finalize the comprehensive Compliance Ordinance to ensure consistent and effective enforcement of the Universal Building Code, Land Use Regulation and Natural Resources Codes.
- Update Land Use web pages on regular basis to assist public in understanding processes and regulations they must operate within.

Land Use

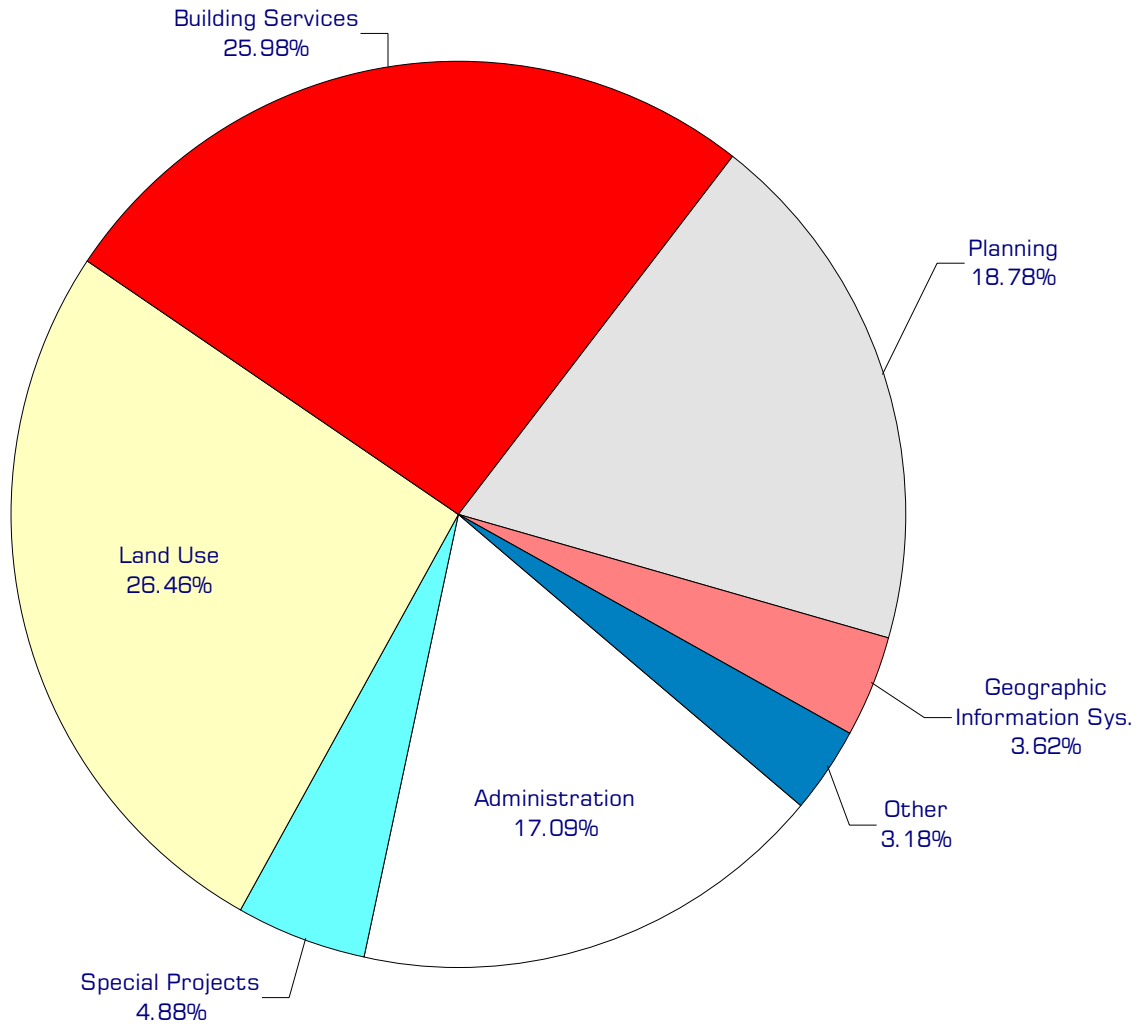
- Provide and maintain informational brochures for each area and service provided by the Land Use Division. The brochures will explain the basic services and review offered by the Land Use Division and the Natural Resource Section.
 - Establish the Natural Resource Section, which will perform all Natural Resource reviews including: Wetlands, Lake and Stream Management, Aquifer Recharge Area review, Surface Mining and Geological Hazard Area Reviews (including alluvial fan hazard areas), Agricultural Nutrient Enforcement, and State Environmental Policy Act Reviews and Determinations.
 - Complete zoning and environmental reviews within three days of a completed submittal of the required information.
- Planning**
- Comply with the Growth Management Act.
 - Complete mandated update of the Whatcom County Shoreline Management Program.
 - Coordinate Capital Facilities planning and Comprehensive Economic Development Strategy project list.
 - Perform mandated current planning functions including review of rezones, open space, annexation requests, zoning text amendments, comprehensive plan amendments, forest practice applications, and public information on land use questions.
 - Enhance GIS resources to increase interdepartmental communication and promote GIS services with other jurisdictions, development community and with citizens.
 - Complete the update of two subarea plans.
 - Work with the community groups and advisory boards to implement high priority action items in the Whatcom County Comprehensive Plan.

Expenditure Trends



NOTE: Capital expenditures and residual equity transfers are not shown to more accurately reflect ongoing operational costs.

2005-2006 Budget by Program



NOTE: Capital expenditures and residual equity transfers are not shown to more accurately reflect ongoing operational costs.

Program Summary

	Actual 2001	Actual 2002	Actual 2003	Budget 2004	Budget 2005	Budget 2006
OPERATIONS						
General Fund						
800 Planning & Develop. Admin	256,067	273,858	297,432	663,079	765,803	780,094
815 Special Projects	-	-	-	45,233	356,349	85,207
820 Land Use Services	967,059	1,024,836	1,150,799	1,128,525	1,195,141	1,198,607
830 Building Services	914,686	956,007	1,111,378	1,191,210	1,204,347	1,145,466
2500 Planning	559,638	536,517	689,432	777,044	837,413	861,690
2510 GIS	122,689	126,819	145,625	148,056	170,391	157,234
2561 GMA Update Grant	-	28,941	45,059	90,275	-	-
2563 WCOG Interlocal	10,000	-	-	-	-	-
2565 CZM Grant	13,500	-	19,688	1,950	-	-
2567 Birch Bay Community	57,260	38,960	-	-	-	-
2569 EDA Grant - Economic Develop	-	164,989	-	-	-	-
2570 Purchase Develop Rights	-	19,453	10,735	25,765	15,000	15,000
2571 Whatcom Conservation Distric	-	15,000	-	-	-	-
2572 GeoEngineers Contract	-	8,455	31,545	-	-	-
2573 Lummi Island Contract	-	7,885	27,011	104	-	-
2574 Paul Schissler Contract	-	2,530	-	-	-	-
2575 CDBG Grants	-	-	-	24,000	-	-
2576 DOE Shoreline Permit Grant	-	-	-	423,650	257,469	-
Total Planning & Develop Operations	2,900,899	3,204,250	3,528,704	4,518,891	4,801,913	4,243,298
CAPITAL						
General Fund						
800 Planning & Develop. Admin	14,104	13,779	38,086	34,000	-	-
820 Land Use Services	-	-	-	100	-	-
830 Building Services	-	-	4,756	4,910	-	-
2500 Planning	-	-	5,898	4,007	2,752	-
2510 GIS	6,196	-	-	-	19,750	-
2561 GMA Update Grant	-	2,607	11,651	-	-	-
2565 CZM Grant	3,000	-	-	-	-	-
2569 EDA Grant - Economic Develop	-	2,592	-	-	-	-
Total Planning & Develop. Capital	23,300	18,978	60,391	43,017	22,502	-
TRANSFERS						
General Fund						
800 Planning & Develop. Admin	1,605	-	-	30,000	52,917	39,483
815 Special Projects	-	-	-	-	7,200	7,347
820 Land Use Services	8,992	-	-	6,064	4,000	-
830 Building Services	8,452	-	-	20,000	-	-
2500 Planning	4,291	-	2,500	-	3,000	-
2510 GIS	1,158	-	-	-	-	-
Total Planning & Develop. Transfers	24,498	-	2,500	56,064	67,117	46,830
TOTAL PLAN & DEVELOPMENT	2,948,697	3,223,228	3,591,595	4,617,972	4,891,532	4,290,128
Percent Change from Previous Year	11.9%	9.3%	11.4%	28.6%	5.9%	-12.3%

2005-2006 Funding Sources

	2005	2006
Land Use Permits	564,000	559,000
Plan Check Fees	945,000	945,000
Building Permits	1,700,000	1,700,000
Intergovernmental Revenue	215,000	19,000
Other Charges for Service	526,500	526,500
General Fund	829,863	472,748
Miscellaneous Revenue	21,550	21,050
Operating Transfer-Flood	153,000	0
Total Funding	4,801,913	4,243,298

Land Use Permits

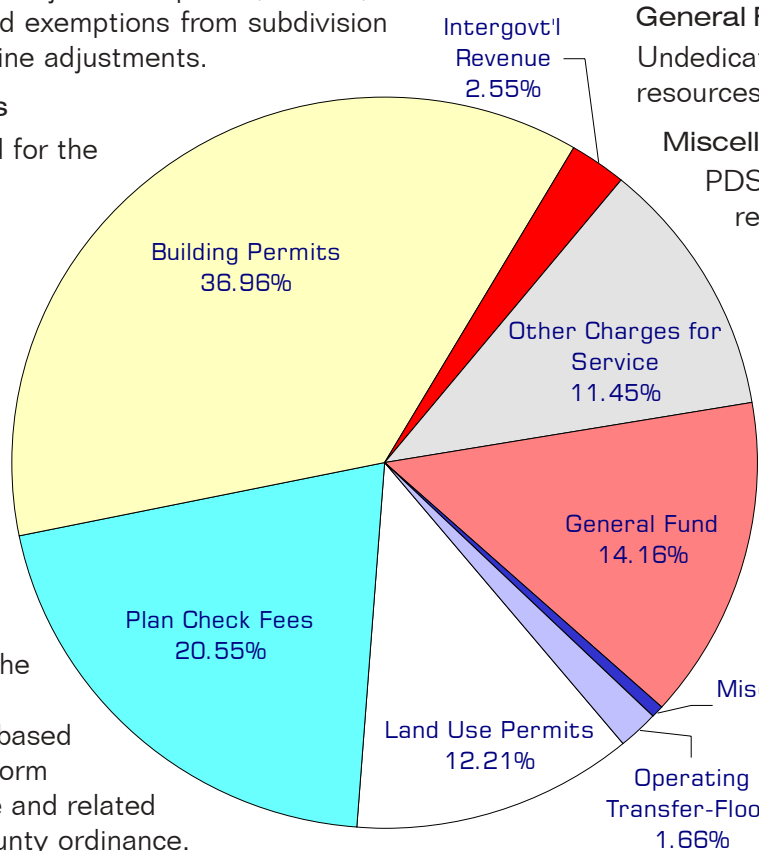
Fees collected for long and short plats and for the various land-use permits: conditional use, variance; major development, rezone, SEPA fees and exemptions from subdivision rules and lot line adjustments.

Plan Check Fees

Fees collected for the review of construction plans.

Building Permits

The department receives revenue from a variety of building related permits. The authority for the collection of these fees is based upon the Uniform Building Code and related codes and county ordinance.



Intergovernmental Revenue

PDS received a Washington State Department of Ecology grant to update the Whatcom County Shoreline Management Program to meet new state regulations. PDS also receives \$19,000 per year from the Northwest Air Pollution Authority in support of the county's burn program.

Other Charges for Service

Planning and Development Services collects fees for annexation reviews, reviews for compliance with the Critical Area Ordinance, land clearing permits and surface mining fees.

General Fund

Undedicated General Fund resources.

Miscellaneous Revenue

PDS receives small amounts of revenue from various sources, such as the sale of publications, printing & duplicating charges, and civil fines.

Operating Transfer - Flood

The Flood Control Zone District will transfer \$153,000 to PDS to fund a storm water study in Birch Bay.

Performance / Activity Measures

	Actual 2001	Actual 2002	Actual 2003	Projected 2004	Projected 2005	Projected 2006
Permit Application - Commercial	174	165	154	158	158	158
Permit Application - Detached Building	392	455	561	506	506	506
Permit Application - Mobile Homes	226	238	216	164	164	164
Permit Application - New Single Family Residence	531	656	949	1,194	1,194	1,194
Permit Application - Single Family Addition/Remodel	280	316	310	330	330	330
Permit Application - Mechanical/Plumbing	869	778	844	800	800	800
Permit Application - Fire Alarm/Sprinkler System	31	37	30	26	26	26
Permit Application - Fire Commercial Ground Tanks	19	21	18	12	12	12
Permit Application - Burn Permits	283	377	316	380	380	380
Master Plan Review	2	19	24	22	22	22
Revised Building Plan Review	66	72	96	288	288	288
Fire Plan Review	200	646	400	864	864	864
Final Review	1,439	1,673	1,993	1,790	1,790	1,790
Fire Plan Inspections	44	54	61	68	68	68
Burn Inspections	241	375	584	800	800	800
Fire Safety Inspections	200	544	446	540	540	540
Building Permit Inspections	11,955	14,243	15,416	15,706	15,706	15,706
Commercial Pre-Application Meeting	52	64	70	88	88	88
Building Services Special Meetings	167	138	138	130	130	130
Zoning Application - Administrative	56	51	48	48	48	48
Zoning Application - Conditional Use	32	19	28	23	23	23
Zoning Application - Non Conforming Use	24	14	7	12	12	12
Zoning Application - Zoning Variance	9	5	6	6	6	6
Land Disturbance Review	1,886	2,220	2,428	2,600	2,600	2,600
Fill & Grade/Clearing Review	135	129	291	282	282	282
Shoreline Conditional Use Permit	18	17	12	12	12	12
Shoreline Substantial Development Permit	26	36	13	24	25	24
Shoreline Variance Permit	22	14	7	7	7	7
Shoreline Exemption Permit	150	225	331	200	227	215
Subdivision Long Plat	7	5	5	6	6	6
Subdivision Binding Site Plan	6	-	1	2	2	2
Subdivision Major Development	-	1	2	1	1	1

Performance / Activity Measures continued

	Actual 2001	Actual 2002	Actual 2003	Projected 2004	Projected 2005	Projected 2006
Subdivision Planned Unit Development	-	4	2	2	2	2
Subdivision Exemption	450	426	632	768	768	768
Subdivision Short Plat	45	39	44	62	62	62
Enforcement Land Use/Building	416	372	534	1,164	1,164	1,164
Enforcement Land Use Appeal	17	17	16	40	40	40
Zoning Review	4,946	5,893	7,602	7,916	7,916	7,916
Critical Area Map Check	1,886	2,220	2,428	2,600	2,600	2,600
Clearing/Grading Inspections	10	39	95	556	556	556
Natural Resources (NR) Wetland Site Review			1,067	1,144	1,144	1,144
NR Geological Hazard Review	284	357	528	500	500	500
NR Endangered Species Review			59	50	50	50
NR Watershed Review			470	480	618	641
NR SEPA Review	310	405	524	446	446	446
NR Repeat Permit Review	7	14	73	70	70	70
NR Wetlands Site Inspection	633	523	535	550	550	550
NR Geological Hazard Inspection	34	32	49	40	40	40
NR Special District - Watershed Inspection		105	387	400	400	400
NR Shoreline Inspection		43	15	24	24	24
NR Enforcement Inspection	295	241	651	1,000	1,000	1,000
Subdivision Exemption Research	399	410	462	500	500	500
Surface Mining	86	88	100	100	100	100
Critical Area Mitigation Plan	79	93	100	100	100	100
Commercial Landscaping	35	36	29	30	30	30
Conversion Option Harvest Reviews	16	9	4	4	18	17
Land Use Pre-application Meeting			35	44	44	44
Technical Review Committee Meetings	22	36	26	22	44	44
Land Use Special Meetings	239	265	439	400	400	400
Land Use Hearings			40	104	104	104
Forest Practice Applications	135	135	210	228	168	168
Open Space Applications	40	20	21	20	25	24
Subarea Plan Updates	2	1	-	2	1	1
GIS/Maps/DATA	1,500	875	1,500	1,800	1,800	1,800
Zoning/Comp Plan Interpretations	300	150	300	380	380	380
Zoning Text Amendments	20	11	21	20	20	20

Note: This represents the best available data to date. We anticipate increase in data information as data entry capabilities improve.

Expenditures Summary

	Actual 2001	Actual 2002	Actual 2003	Budget 2004	Budget 2005	Budget 2006
GENERAL FUND						
800 Administration						
Salaries & Wages	113,108	118,894	129,735	210,999	227,004	233,666
Benefits	26,704	25,719	27,875	55,363	63,357	69,939
Supplies	1,033	1,572	1,151	1,750	14,034	5,223
Other Services & Charges	115,222	127,673	138,671	394,967	461,408	471,266
Capital Outlay	14,104	13,779	38,086	34,000	-	-
Operating Transfer	1,605	-	-	30,000	52,917	39,483
<i>Total Administration</i>	<i>271,776</i>	<i>287,637</i>	<i>335,518</i>	<i>727,079</i>	<i>818,720</i>	<i>819,577</i>
<i>Percent Change from Previous Year</i>	<i>8.8%</i>	<i>5.8%</i>	<i>16.6%</i>	<i>116.7%</i>	<i>12.6%</i>	<i>0.1%</i>
815 Special Projects						
Salaries & Wages	-	-	-	36,722	62,592	62,952
Benefits	-	-	-	8,511	16,382	18,317
Supplies	-	-	-	-	1,250	805
Other Services & Charges	-	-	-	-	276,125	3,133
Operating Transfer	-	-	-	-	7,200	7,347
<i>Total Special Projects</i>	<i>-</i>	<i>-</i>	<i>-</i>	<i>45,233</i>	<i>363,549</i>	<i>92,554</i>
<i>Percent Change from Previous Year</i>	<i>0.0%</i>	<i>0.0%</i>	<i>0.0%</i>	<i>0.0%</i>	<i>703.7%</i>	<i>-74.5%</i>
820 Land Use						
Salaries & Wages	640,662	687,904	778,334	802,573	868,786	860,040
Benefits	174,407	184,399	209,056	226,062	268,365	288,143
Supplies	14,085	9,071	12,333	14,093	18,200	11,030
Other Services & Charges	137,905	143,462	151,076	85,797	39,790	39,394
Capital Outlay	-	-	-	100	-	-
Operating Transfer	8,992	-	-	6,064	-	-
Residual Equity Transfer	-	-	-	-	4,000	-
<i>Total Land Use</i>	<i>976,051</i>	<i>1,024,836</i>	<i>1,150,799</i>	<i>1,134,689</i>	<i>1,199,141</i>	<i>1,198,607</i>
<i>Percent Change from Previous Year</i>	<i>2.3%</i>	<i>5.0%</i>	<i>12.3%</i>	<i>-1.4%</i>	<i>5.7%</i>	<i>0.0%</i>
830 Building Services						
Salaries & Wages	627,972	657,827	781,843	841,666	883,195	818,696
Benefits	171,328	173,830	207,890	239,128	275,952	281,669
Supplies	13,936	14,134	18,598	29,968	17,950	17,476
Other Services & Charges	101,450	110,216	103,047	80,348	27,250	27,625
Intergov Services & Charge	-	-	-	100	-	-
Capital Outlay	-	-	4,756	4,910	-	-
Operating Transfer	8,452	-	-	-	-	-
Residual Equity Transfer	-	-	-	20,000	-	-
<i>Total Building Services</i>	<i>923,138</i>	<i>956,007</i>	<i>1,116,134</i>	<i>1,216,120</i>	<i>1,204,347</i>	<i>1,145,466</i>
<i>Percent Change from Previous Year</i>	<i>13.9%</i>	<i>3.6%</i>	<i>16.7%</i>	<i>9.0%</i>	<i>-1.0%</i>	<i>-4.9%</i>

continued on next page

Expenditures Summary continued

	Actual 2001	Actual 2002	Actual 2003	Budget 2004	Budget 2005	Budget 2006
2500 Planning						
Salaries & Wages	341,601	350,325	464,758	525,172	578,587	580,941
Benefits	89,115	86,916	117,941	137,051	161,753	183,137
Supplies	19,953	21,135	26,410	24,693	25,700	22,400
Other Services & Charges	108,969	78,141	80,323	90,128	71,373	75,212
Capital Outlay	-	-	5,898	4,007	2,752	-
Operating Transfer	4,291	-	-	-	-	-
Residual Equity Transfer	-	-	2,500	-	3,000	-
<i>Total Planning</i>	<i>563,929</i>	<i>536,517</i>	<i>697,830</i>	<i>781,051</i>	<i>843,165</i>	<i>861,690</i>
<i>Percent Change from Previous Year</i>	<i>13.2%</i>	<i>-4.9%</i>	<i>30.1%</i>	<i>11.9%</i>	<i>8.0%</i>	<i>2.2%</i>
2510 GIS						
Salaries & Wages	85,380	91,212	102,943	104,563	106,696	106,816
Benefits	22,393	22,301	26,349	26,653	30,095	33,518
Supplies	4,819	4,041	4,845	3,350	6,700	4,100
Other Services & Charges	10,097	9,265	11,488	13,490	26,900	12,800
Capital Outlay	6,196	-	-	-	19,750	-
Operating Transfer	1,158	-	-	-	-	-
<i>Total GIS</i>	<i>130,043</i>	<i>126,819</i>	<i>145,625</i>	<i>148,056</i>	<i>190,141</i>	<i>157,234</i>
<i>Percent Change from Previous Year</i>	<i>5.4%</i>	<i>-2.5%</i>	<i>14.8%</i>	<i>1.7%</i>	<i>28.4%</i>	<i>-17.3%</i>
2561 GMA Update Grant						
Salaries & Wages	-	167	-	-	-	-
Supplies	-	3,210	-	-	-	-
Other Services & Charges	-	25,564	45,059	90,275	-	-
Capital Outlay	-	2,607	11,651	-	-	-
<i>Total GMA Update Grant</i>	<i>-</i>	<i>31,548</i>	<i>56,710</i>	<i>90,275</i>	<i>-</i>	<i>-</i>
<i>Percent Change from Previous Year</i>	<i>0.0%</i>	<i>0.0%</i>	<i>79.8%</i>	<i>59.2%</i>	<i>-100.0%</i>	<i>0.0%</i>
2563 WCOG Interlocal						
Salaries & Wages	9,000	-	-	-	-	-
Supplies	1,000	-	-	-	-	-
<i>Total WCOG Interlocal</i>	<i>10,000</i>	<i>-</i>	<i>-</i>	<i>-</i>	<i>-</i>	<i>-</i>
<i>Percent Change from Previous Year</i>	<i>0.0%</i>	<i>-100.0%</i>	<i>0.0%</i>	<i>0.0%</i>	<i>0.0%</i>	<i>0.0%</i>
2565 CZM Grant						
Salaries & Wages	11,500	-	14,967	-	-	-
Benefits	-	-	-	-	-	-
Supplies	2,000	-	4,721	1,950	-	-
Other Services & Charges	-	-	-	-	-	-
Capital Outlay	3,000	-	-	-	-	-
<i>Total CZM Grant</i>	<i>16,500</i>	<i>-</i>	<i>19,688</i>	<i>1,950</i>	<i>-</i>	<i>-</i>
<i>Percent Change from Previous Year</i>	<i>0.0%</i>	<i>-100.0%</i>	<i>0.0%</i>	<i>-90.1%</i>	<i>-100.0%</i>	<i>0.0%</i>
2567 Birch Bay Community						
Supplies	1,500	-	-	-	-	-
Other Services & Charges	55,760	38,960	-	-	-	-
<i>Total Birch Bay Community</i>	<i>57,260</i>	<i>38,960</i>	<i>-</i>	<i>-</i>	<i>-</i>	<i>-</i>
<i>Percent Change from Previous Year</i>	<i>0.0%</i>	<i>-32.0%</i>	<i>-100.0%</i>	<i>0.0%</i>	<i>0.0%</i>	<i>0.0%</i>

continued on next page

Expenditures Summary continued

	Actual 2001	Actual 2002	Actual 2003	Budget 2004	Budget 2005	Budget 2006
2569 EDA Grant - Economic Development						
Salaries & Wages	-	5,495	-	-	-	-
Benefits	-	494	-	-	-	-
Other Services & Charges	-	159,000	-	-	-	-
Capital Outlay	-	2,592	-	-	-	-
<i>Total EDA Grant-Economic Devel</i>	-	167,581	-	-	-	-
<i>Percent Change from Previous Year</i>	0.0%	0.0%	-100.0%	0.0%	0.0%	0.0%
2570 Purchase Develop Rights						
Other Services & Charges	-	19,453	10,735	25,765	15,000	15,000
<i>Total Purchase Develop Rights</i>	-	19,453	10,735	25,765	15,000	15,000
<i>Percent Change from Previous Year</i>	0.0%	0.0%	-44.8%	140.0%	-41.8%	0.0%
2571 Whatcom Conservation District						
Other Services & Charges	-	15,000	-	-	-	-
<i>Total Whatcom Conservation Distric</i>	-	15,000	-	-	-	-
<i>Percent Change from Previous Year</i>	0.0%	0.0%	-100.0%	0.0%	0.0%	0.0%
2572 GeoEngineers Contract						
Other Services & Charges	-	8,455	31,545	-	-	-
<i>Total GeoEngineers Contract</i>	-	8,455	31,545	-	-	-
<i>Percent Change from Previous Year</i>	0.0%	0.0%	273.1%	-100.0%	0.0%	0.0%
2573 Lummi Island Contract						
Other Services & Charges	-	7,885	27,011	104	-	-
<i>Total Lummi Island Contract</i>	-	7,885	27,011	104	-	-
<i>Percent Change from Previous Year</i>	0.0%	0.0%	242.6%	-99.6%	-100.0%	0.0%
2574 Schissler Contract						
Other Services & Charges	-	2,530	-	-	-	-
<i>Total Schissler Contract</i>	-	2,530	-	-	-	-
<i>Percent Change from Previous Year</i>	0.0%	0.0%	-100.0%	0.0%	0.0%	0.0%
2575 CDBG Grants						
Other Services & Charges	-	-	-	24,000	-	-
<i>Total CDBG Grants</i>	-	-	-	24,000	-	-
<i>Percent Change from Previous Year</i>	0.0%	0.0%	0.0%	0.0%	-100.0%	0.0%
2576 DOE Shoreline Permit						
Salaries & Wages	-	-	-	73,714	74,500	-
Benefits	-	-	-	21,536	23,969	-
Other Services & Charges	-	-	-	328,400	159,000	-
<i>Total DOE Shoreline Permit</i>	-	-	-	423,650	257,469	-
<i>Percent Change from Previous Year</i>	0.0%	0.0%	0.0%	0.0%	-39.2%	-100.0%
TOTAL PLAN & DEVELOP SVCS	2,948,697	3,223,228	3,591,595	4,617,972	4,891,532	4,290,128
<i>Percent Change from Previous Year</i>	11.9%	9.3%	11.4%	28.6%	5.9%	-12.3%

Services

Archeological Reviews

Review of archaeological site inquiries for Point Roberts property owners, realtors and contractors. Provide archaeological site review using confidential GIS information.

Building Reviews

Review and enforcement of mandated zoning and life safety codes.

Code Compliance

Education and enforcement of land use, development, natural resource development, natural resources and building regulations.

Land Disturbance

Reviews for approval of land clearing, fill, grading, erosion control and forest practices.

Natural Resources Program

Review and approval of development activity within or near regulated water resource protection areas and critical areas. Review and approval of regulated surface mines. Protection of agricultural land and forests, and update of regulations to comply with state and federal requirements.

Open Space

Develop and administer programs relating to conservation of open space, including open space tax programs, purchase or transfer of development rights, and acquisition of land or easements.

Permit Coordination

Permit services include development permit intake, permit routing and tracking, permit issuance and research at the request of the public or staff, including cashiering.

Plan Review

Provide non-structural and structural review of residential and commercial plans, including manufactured structures.

SEPA Reviews

Review of threshold determination on all projects, public and private subject to Whatcom County jurisdiction and which do not qualify for a SEPA exemption. Provides supervision of writing of Environmental Impact Statements.

Shoreline Program

Review and permitting for all development proposals within 200 feet of the Ordinary High Water Mark of regulated shorelines, including periodic update of regulations and data. Complete mandated update of Shoreline Management Program.

Subdivision Review

Review and approval/ recommendation of short plat/long plat applications and other permits and approvals authorized by Title 21.

Services continued

Zoning Administration

Respond to citizen inquiries; review and make recommendations regarding approval of permits authorized under the zoning code. Process citizen applications, Council and Planning Commission request for changes to zoning maps and text.

Data/Records

Specialized database development, software support and maintenance of system for permit tracking, recording inspection results, land use and environmental data, filing and records retention.

Fire

Review of permits, plat applications and provides on-site site inspections including new construction, fire alarm and sprinkler system installations, fire extinguisher placement, emergency exiting, storage and handling of hazardous materials. Oversee outdoor burn program. Arson investigation.

Inspections/Life Safety

Field inspection and enforcement of mandated zoning and life safety codes.

Comprehensive Plan Revisions

Processes applications, Council and Planning Commission requests for changes to the Comprehensive Plan, map and text, Sub-area Plans, Economic Development and Capital Facilities Plan.