

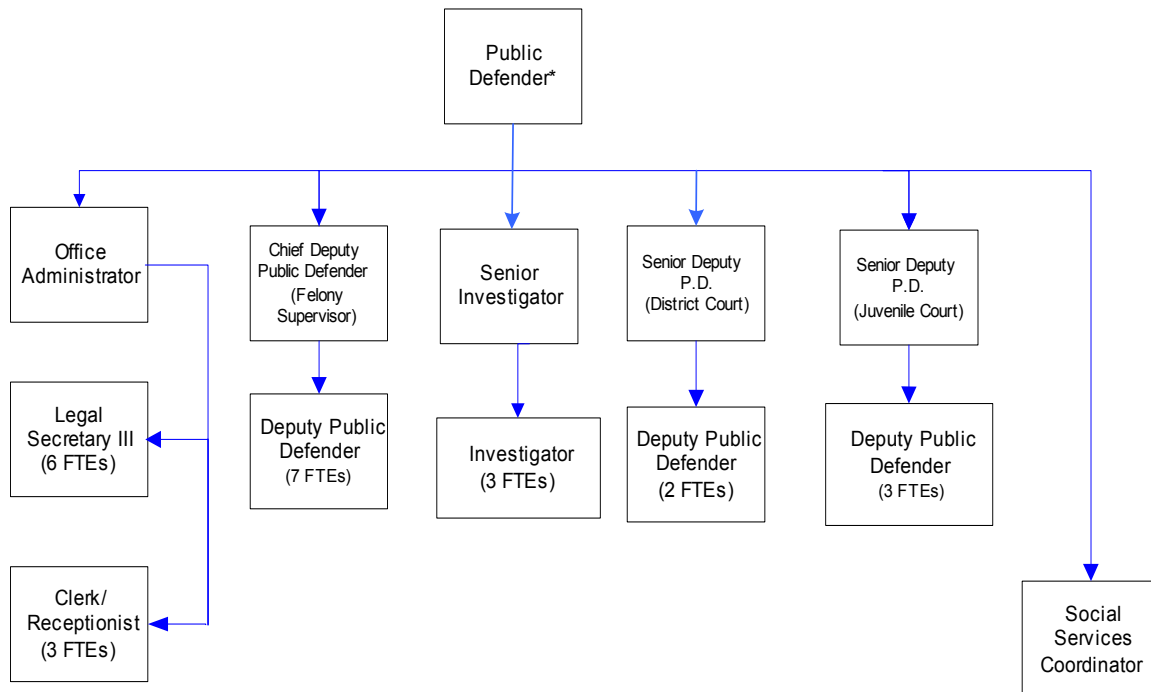
Public Defender's Office

The Public Defender's Office provides constitutionally mandated indigent legal defense for: felony, misdemeanor and probation violation charges against adults and juveniles in Whatcom County Superior and District Courts; parents in juvenile dependency matters; involuntary mental and alcohol commitments.

FTE's for this department

Year	2001	2002	2003	*2004	*2005	*2006	*budget
FTE	28.00	28.00	28.00	28.00	31.00	32.00	

The chart below shows the organizational structure for 2005 only.



**Public Defender to carry a half-time caseload.*

Mission & Objectives

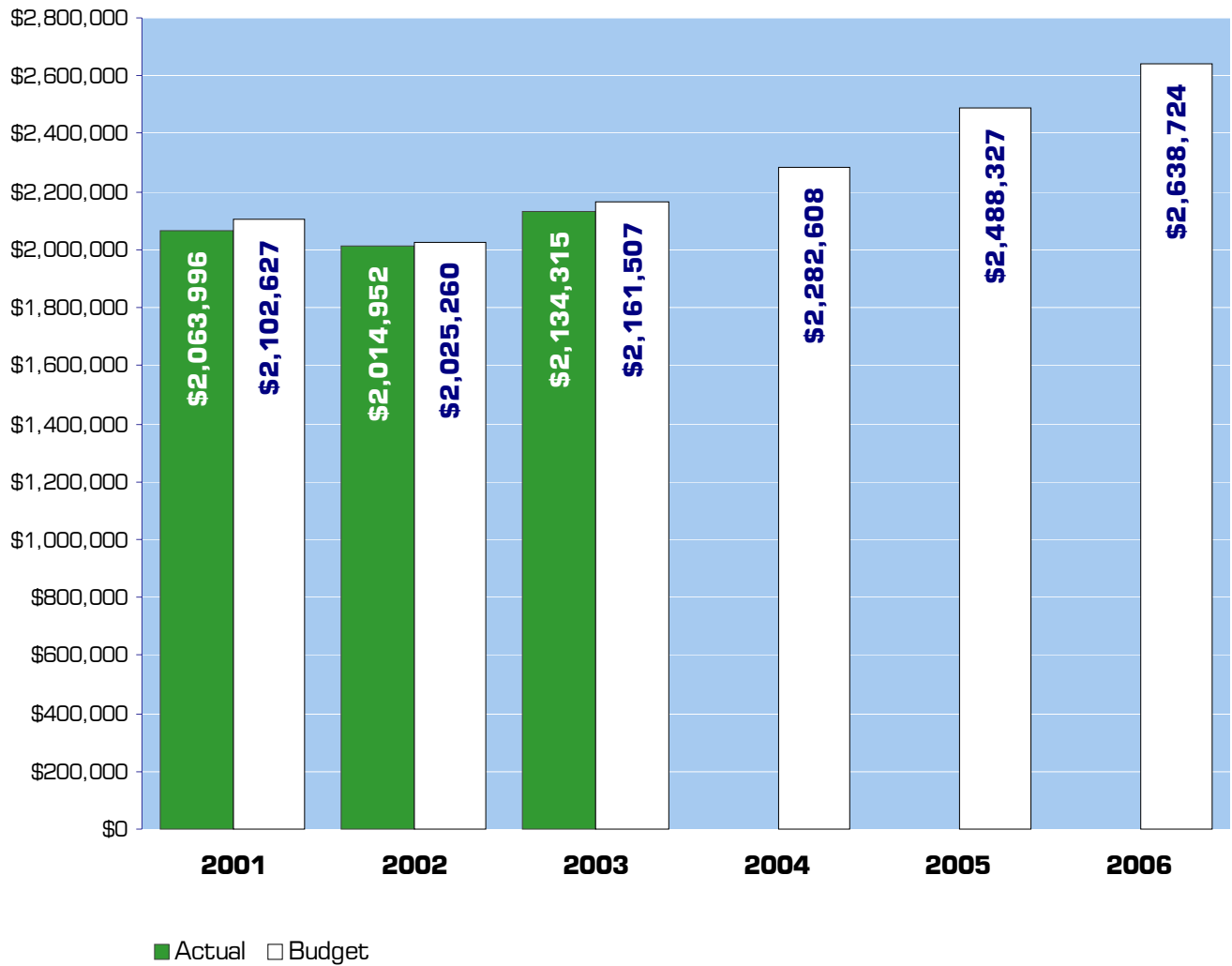
Mission

The Public Defender's Office was created in 1982 by county ordinance pursuant to RCW 36.26 and mandated to provide legal representation for those who cannot afford an attorney and who are entitled to legal defense at public expense pursuant to the constitutions of the United States and the State of Washington, or pursuant to statute. The overall mission of the department is to provide high quality legal representation as efficiently and economically as possible, while maintaining the confidence of clients that they are receiving competent and skilled representation.

Objectives

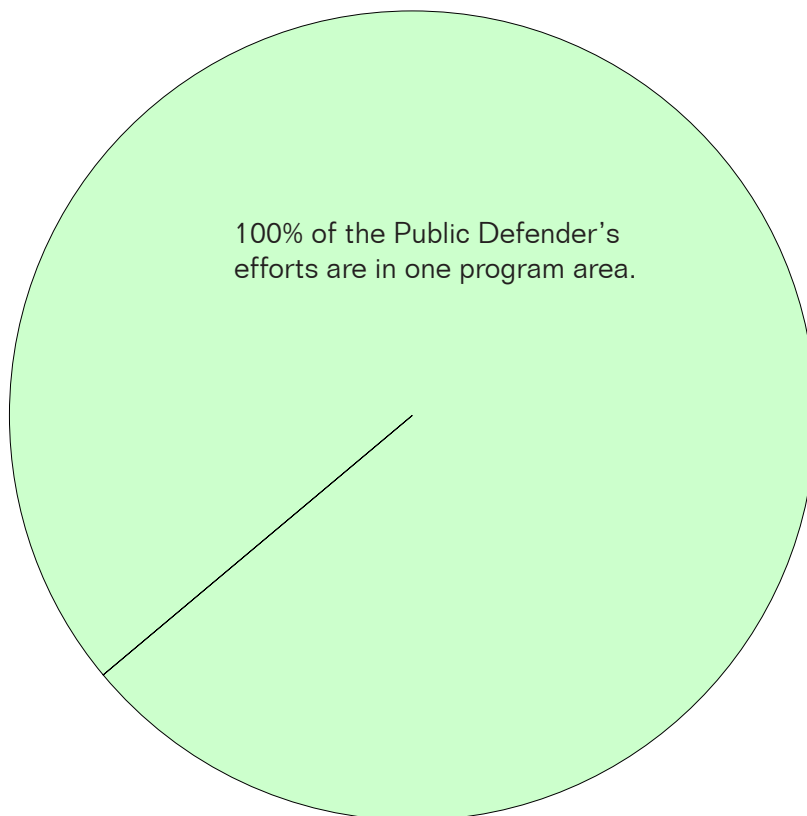
- Provide competent representation to each of our clients.
- Work towards bringing our caseloads closer to national and state standards.
- Work with other branches of the criminal justice system, the Department of Social and Health Services, and the Attorney General's Office to maintain and expand drug courts and family treatment courts in Whatcom County.
- Develop a Policy and Procedures Manual for the Whatcom County Public Defender's Office.

Expenditure Trends



NOTE: Capital expenditures and interfund operating transfers are not shown to more accurately reflect ongoing operational costs.

2005-2006 Budget by Program



NOTE: Capital expenditures are not shown to more accurately reflect ongoing operational costs.

Program Summary

	Actual 2001	Actual 2002	Actual 2003	Budget 2004	Budget 2005	Budget 2006
OPERATIONS						
General Fund						
2650 Public Defender	1,818,220	2,008,109	2,134,315	2,282,608	2,488,327	2,638,724
2655 Public Defender-Kinney	245,776	6,843	-	-	-	-
<i>Total Public Defender Operations</i>	<i>2,063,996</i>	<i>2,014,952</i>	<i>2,134,315</i>	<i>2,282,608</i>	<i>2,488,327</i>	<i>2,638,724</i>
CAPITAL						
General Fund						
2650 Public Defender	4,836	-	-	-	-	8,937
2655 Public Defender-Kinney	10,168	-	-	-	-	-
<i>Total Public Defender Capital</i>	<i>15,004</i>	<i>-</i>	<i>-</i>	<i>-</i>	<i>-</i>	<i>8,937</i>
TRANSFERS						
General Fund						
2650 Public Defender	15,692	-	-	-	-	-
2655 Public Defender-Kinney	1,457	-	-	-	-	-
<i>Total Public Defender Transfers</i>	<i>17,149</i>	<i>-</i>	<i>-</i>	<i>-</i>	<i>-</i>	<i>-</i>
TOTAL PUBLIC DEFENDER	2,096,149	2,014,952	2,134,315	2,282,608	2,488,327	2,647,661
<i>Percent Change from Previous Year</i>	<i>19.5%</i>	<i>-3.9%</i>	<i>5.9%</i>	<i>6.9%</i>	<i>9.0%</i>	<i>6.4%</i>

2005-2006 Funding Sources

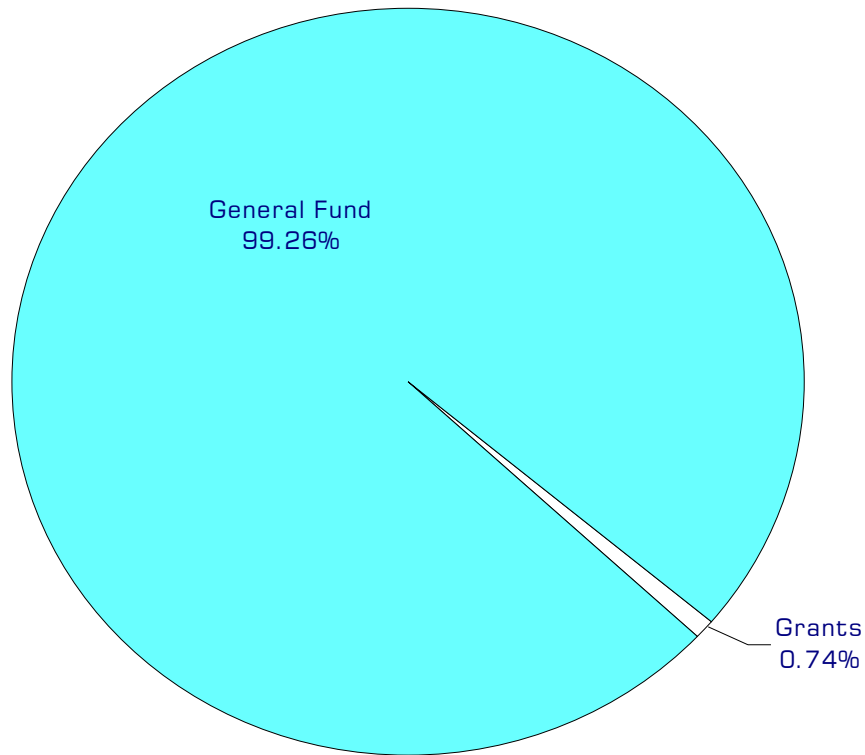
	2005	2006
Grants	19,000	19,000
General Fund	2,469,327	2,619,724
Total Funding	2,488,327	2,638,724

Grants

Revenue received from the State of Washington, based on the funding model for the Becca Bill.

General Fund

Undedicated General Fund resources.



Performance / Activity Measures

	Actual 2001	Actual 2002	Actual 2003	Projected 2004	Projected 2005	Projected 2006
Felonies	1,193	1,431	1,524	1,555	1,600	1,650
Probation Violations (Sup/Dist Cts)	757	466	315	270	280	300
Misdemeanors	1,211	1,305	1,479	1,736	1,850	2,000
Juvenile (Delinquency)	987	961	939	790	800	900
Juvenile (Probation)	791	692	749	790	800	800
Juvenile (Dependency)	139	137	213	310	350	400
Mental/Alcohol Commitments	235	225	209	300	400	400
Appeals/Other	24	49	63	55	60	60
Total	5,337	5,266	5,492	5,806	6,140	6,510

Expenditures Summary

	Actual 2001	Actual 2002	Actual 2003	Budget 2004	Budget 2005	Budget 2006
GENERAL FUND						
2650 Public Defender						
Salaries & Wages	1,174,566	1,355,826	1,450,756	1,538,574	1,644,170	1,718,665
Benefits	320,360	324,540	340,397	401,872	484,336	558,210
Supplies	36,155	32,384	35,852	41,305	49,054	43,551
Other Services & Charges	287,139	295,359	307,310	300,857	310,767	318,298
Capital Outlay	4,836	-	-	-	-	8,937
Operating Transfers	15,692	-	-	-	-	-
<i>Total Public Defender</i>	<i>1,838,748</i>	<i>2,008,109</i>	<i>2,134,315</i>	<i>2,282,608</i>	<i>2,488,327</i>	<i>2,647,661</i>
<i>Percent Change from Previous Year</i>	<i>4.9%</i>	<i>9.2%</i>	<i>6.3%</i>	<i>6.9%</i>	<i>9.0%</i>	<i>6.4%</i>
2655 Public Defender-Kinney						
Salaries & Wages	150,118	-	-	-	-	-
Benefits	35,442	-	-	-	-	-
Supplies	4,699	-	-	-	-	-
Other Services & Charges	55,517	6,843	-	-	-	-
Capital Outlay	10,168	-	-	-	-	-
Operating Transfers	1,457	-	-	-	-	-
<i>Total Public Defender-Kinney</i>	<i>257,401</i>	<i>6,843</i>	<i>-</i>	<i>-</i>	<i>-</i>	<i>-</i>
<i>Percent Change from Previous Year</i>	<i>0.0%</i>	<i>-97.3%</i>	<i>-100.0%</i>	<i>0.0%</i>	<i>0.0%</i>	<i>0.0%</i>
TOTAL PUBLIC DEFENDER	2,096,149	2,014,952	2,134,315	2,282,608	2,488,327	2,647,661
<i>Percent Change from Previous Year</i>	<i>19.5%</i>	<i>-3.9%</i>	<i>5.9%</i>	<i>6.9%</i>	<i>9.0%</i>	<i>6.4%</i>

Services

Public Defender

Provides criminal defense for indigents in Whatcom County, and representation for parents in dependency cases and for individuals undergoing involuntary mental health and alcohol commitment proceedings.

