

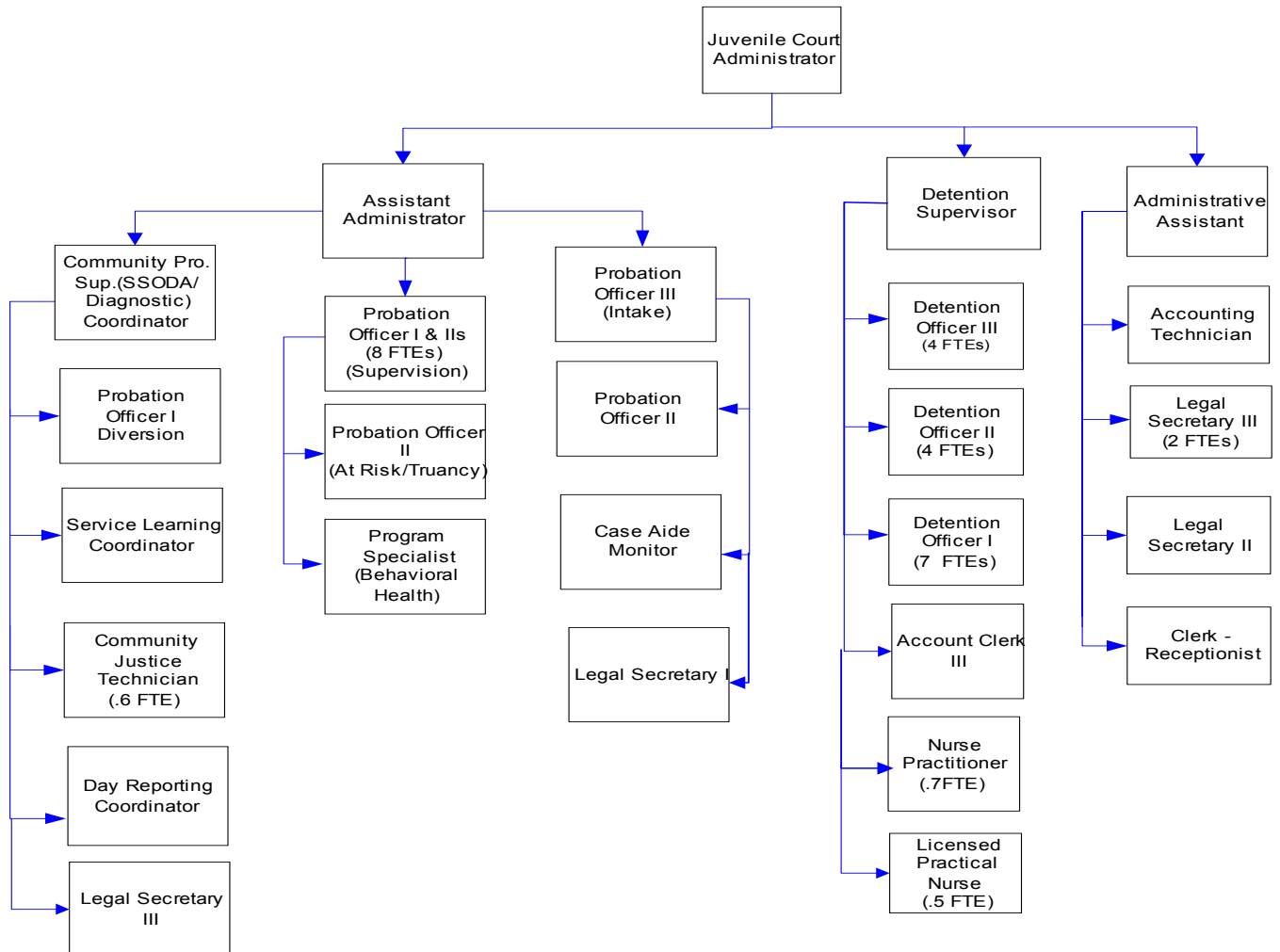
# Juvenile Court Administration

Through the Juvenile Court, Detention Center and a number of special programs, this department provides services to assist young offenders with personal and/or environmental problems which get them into trouble with law. The Juvenile Detention Facility is located on the 6th floor of the courthouse. (Visiting hours are limited. Call for schedule.)

## FTE's for this department

Year	2001	2002	2003	*2004	*2005	*2006	*budget
FTE	49.75	47.00	45.00	45.10	45.80	45.80	

The chart below shows the organizational structure for 2005 only.



## Mission & Objectives

### Mission

Whatcom County Juvenile Court Administration strives to be a catalyst for developing safe communities and healthy youth and families by:

- Holding offenders accountable for their actions.
- Establishing and maintaining effective communication with the community around youth at risk in order to achieve cooperation in making appropriate decisions and receive support in developing and using services and resources.
- Providing a range of community programs and services to meet the individual needs of the youth we serve. This includes educational support, vocational training, recreation, mental health and specialized programs such as anger management, conflict resolution, sex offender treatment and substance abuse treatment.
- Involving the victim, family and community as preferred resources and using a case management model to provide results-based and outcome-driven interventions and practices.
- Utilizing the Washington Juvenile Court Administrators Risk Assessment tool to identify and address the needs of juvenile offenders while maintaining public safety at all times.
- Maintaining a safe and secure detention facility that will provide graduated sanctions for juvenile offenders and public safety for victims and the community.
- Obtaining and sustaining sufficient resources.

- Promoting growth and development of all juvenile justice professionals.
- Providing a safe, secure environment for staff and juveniles.

### Objectives

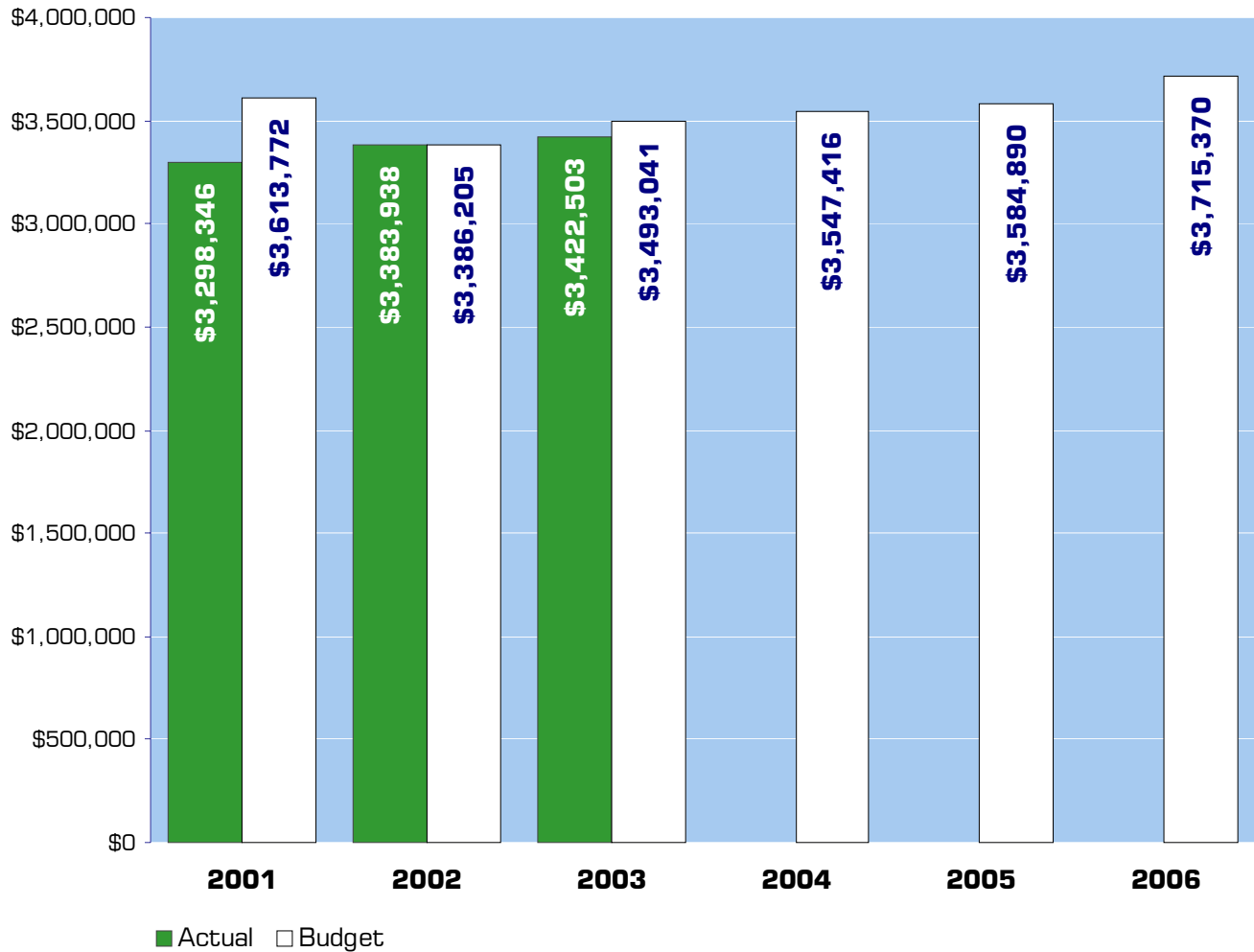
#### Administration

- Increase restitution collected and paid to victims from \$65,000 in 2004 to \$70,000 in 2005 and 2006.
- Decrease the average length of stay in detention from 8.2 days in 2004 to 8 days in 2005 and 2006 by increasing utilization of alternative sanctions.
- Reduce the number of youth issued Failure to Appear (FTA) warrants from an estimated 260 in 2004 to 245 in 2005-2006.
- Reduce the number of youth issued probation violation warrants from an estimated 220 in 2004 to 200 in 2005-2006.
- Seek funding to implement a paid work experience program at the Juvenile Community Justice Center to increase payment of restitution to victims.
- Implement a work readiness program at the Juvenile Community Justice Center to increase the number of offenders who are employed in order to increase payment of restitution to victims.
- Increase the number of youth served in the Juvenile Drug Court from 15 in 2004 to 17 in 2005-2006.

## Objectives continued

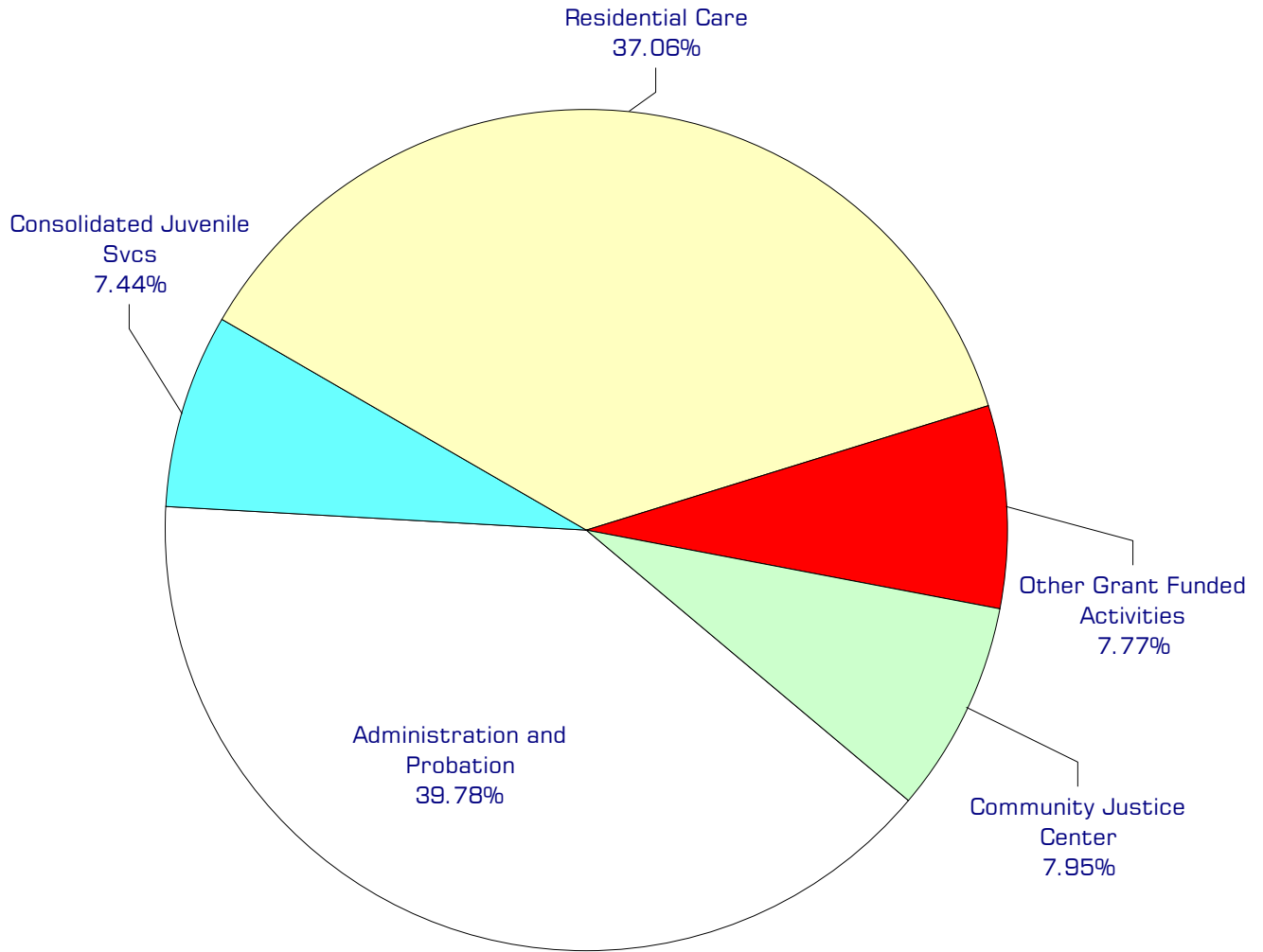
- Utilizing the new case management system, compile the following baseline data for the year for 2005 and beyond:
  - Detention bed days ordered and served for probation violations.
  - Number of days ordered and served for Electronic Home Monitoring.
  - Number of days ordered and served in the Day Reporting program.
  - Community service hours ordered.
  - Community service hours completed.
  - Number of youth discharged early from community supervision.
  - Number of youth discharged with successful completion of requirements.
  - Number of youth discharged without successfully completing requirements.
  - Number of youth adjudicated of a new offense while on community supervision.
- Ensure 80% of juvenile offenders are seen by their probation officers within 20 minutes of their scheduled probation appointments.

## Expenditure Trends



*NOTE: Capital expenditures and interfund operating transfers are not shown to more accurately reflect ongoing operational costs.*

## 2005-2006 Budget by Program



*NOTE: Capital expenditures and residual equity transfers are not shown to more accurately reflect ongoing operational costs.*

# Program Summary

	Actual 2001	Actual 2002	Actual 2003	Budget 2004	Budget 2005	Budget 2006
<b>OPERATIONS</b>						
<b>General Fund</b>						
1900 Juvenile Court- Admin	1,079,130	1,086,670	1,187,014	1,444,421	1,424,125	1,479,844
1941 Juvenile Court-Hlth Ch Girls	15,217	56,585	44,129	25,873	-	-
1945 Comm Justice Center	103,200	207,281	157,930	298,521	284,798	295,275
1950 Juvenile Court-CJS	328,784	330,477	308,673	259,251	268,379	274,782
1953 Parole Detention	64,172	47,307	52,759	51,035	59,153	61,691
1954 Commit Alt	12,628	-	-	-	-	-
1957 Community Bld	23,154	-	-	-	-	-
1959 Becca Bill	129,908	54,190	56,059	66,687	69,358	71,086
1960 Trans	12,459	5,928	-	-	-	-
1961 DSHS	67,591	62,204	38,948	1,750	1,750	1,750
1962 CDDA Grant	-	23,680	58,081	59,077	59,077	59,983
1963 CJAA-DSHS Misc	43,797	33,138	51,790	75,803	75,803	79,290
1964 Juvenile Court - Teen Court	83,974	72,714	33,297	15,000	18,500	10,000
1965 GJJAC-JDAI	-	-	-	9,729	-	-
1970 Residential Care	1,038,419	1,008,540	988,039	1,240,269	1,323,947	1,381,669
1971 Work Crew	23,431	54,361	101,177	-	-	-
1980 Medical/ Dental	15,615	15,863	9,766	-	-	-
1985 Alcoa	-	8,510	27,980	-	-	-
1990 Facilities	252,537	312,090	302,344	-	-	-
1995 DOE Comm Litter Clean	4,330	4,400	4,517	-	-	-
<i>Total Juvenile Court Operations</i>	<b>3,298,346</b>	<b>3,383,938</b>	<b>3,422,503</b>	<b>3,547,416</b>	<b>3,584,890</b>	<b>3,715,370</b>
<b>CAPITAL</b>						
<b>General Fund</b>						
1900 Juvenile Court- Admin	-	1,587	1,385	59,000	-	-
1945 Comm Justice Center	-	-	-	500	500	500
1953 Parole Detention	1,531	-	-	-	849	849
1959 Juvenile Court Becca Bill	3,074	-	-	-	-	-
1963 CJAA-DSHS Misc	-	1,721	-	-	-	-
1970 Residential Care	2,627	1,084	1,459	-	10,000	-
1971 Work Crew	-	1,527	-	-	-	-
<i>Total Juvenile Court Capital</i>	<b>7,232</b>	<b>5,919</b>	<b>2,844</b>	<b>59,500</b>	<b>11,349</b>	<b>1,349</b>

continued on next page

Program Summary continued

	Actual 2001	Actual 2002	Actual 2003	Budget 2004	Budget 2005	Budget 2006
<b>TRANSFERS</b>						
<b>General Fund</b>						
1900 Juvenile Court- Admin	9,058	-	-	-	-	-
1945 Comm Justice Center	1,076	-	2,763	3,000	3,000	3,000
1950 CJS	2,359	4,463	-	-	-	-
1953 Parole Detention	731	-	-	-	-	-
1954 Commit Alt Pr	555	-	-	-	-	-
1959 Juvenile Court Becca Bill	1,244	-	-	-	-	-
1961 DSHS	647	-	-	-	-	-
1963 CJAA-DSHS Misc	91	-	-	-	-	-
1970 Residential Care	9,625	-	-	-	-	-
1971 Work Crew	445	-	-	-	-	-
<i>Total Juvenile Court Transfers</i>	25,831	4,463	2,763	3,000	3,000	3,000
<b>TOTAL JUVENILE COURT ADMIN</b>	<b>3,331,409</b>	<b>3,394,320</b>	<b>3,428,110</b>	<b>3,609,916</b>	<b>3,599,239</b>	<b>3,719,719</b>
<i>Percent Change from Previous Year</i>	8.9%	1.9%	1.0%	5.3%	-0.3%	3.3%

## 2005-2006 Funding Sources

	2005	2006
Service Charges & Fees	53,000	53,000
General Fund	2,936,599	3,060,017
Intergovernmental Revenues	569,291	584,353
Miscellaneous Revenues	20,000	12,000
Operating Transfer-Solid Waste	6,000	6,000
<b>Total Funding</b>	<b>3,584,890</b>	<b>3,715,370</b>

### Service Charges & Fees

Juvenile Court rents available detention space to other jurisdictions at the rate of \$110 per youth per day. The department also charges for copy fees.

### General Fund

Undedicated General Fund resources.

### Operating Transfer - Solid Waste

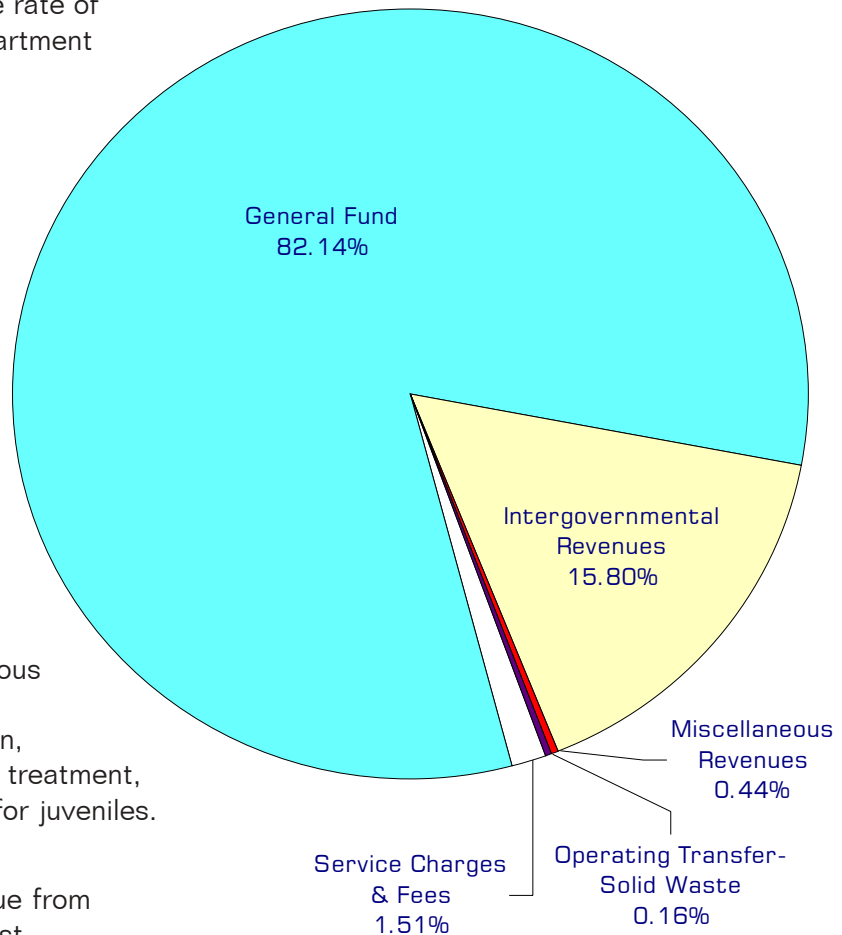
Payment from Solid Waste for supervisor of detention's Juvenile Litter Crews.

### Intergovernmental Revenues

Several Juvenile Services programs are funded by state grants and reimbursements. Most grants are biennial grants with an agreement period from July 1 through June 30 each biennium. These grants fund various programs including intervention activities, parole violator detention, diversion programs, sex offender treatment, and substance abuse treatment for juveniles.

### Miscellaneous Revenue

Includes contributions and revenue from detainee phone usage from Qwest.



## Performance / Activity Measures

	Actual 2001	Actual 2002	Actual 2003	Projected 2004	Projected 2005	Projected 2006
<i>Detention</i>						
Population (Offenders)	1,053	1,092	1,148	1,100	1,150	1,200
Population (Offenders) Bed Days	9,818	9,816	10,000	8,916	9,000	9,000
Average Length of Stay - Bed Days	8.92	8.9	8.35	8.2	8	8
At-Risk/Contempts	38	72	119	80	85	85
At-Risk/Contempts - Bed Days	130	163	176	192	195	195
Truancy/Contempts - Bed Days	11	22	67	75	75	75
<i>Probation</i>						
<i>Community Supervision</i>						
Referred to Diversion	608	680	576	624	625	625
Diversion Agreements Entered	547	508	507	550	550	550
Diversion Agreements Completed	437	426	431	450	475	475
Assigned to Community Supervision	720	736	700	634	650	650
Restitution Collected	\$ 76,056	\$ 45,000	\$ 55,000	\$ 65,000	\$ 70,000	\$ 70,000
<i>Court Services</i>						
Cases Filed	839	868	830	799	750	800
Proceedings Held	2,768	3,423	3,500	3,600	3,500	3,600
At-Risk Youth (ARY) Petitions Filed	60	42	56	50	50	50
Children in Need of Services' Petitions Filed	11	7	14	8	10	10
Dependencies Filed	95	71	83	87	85	85

# Expenditures Summary

	Actual 2001	Actual 2002	Actual 2003	Budget 2004	Budget 2005	Budget 2006
<b>GENERAL FUND</b>						
1900 Juvenile Court Administration						
Salaries & Wages	680,633	714,243	809,501	883,305	850,831	867,242
Benefits	175,175	172,956	204,009	238,783	266,819	298,583
Supplies	17,166	27,059	23,891	25,650	25,650	25,650
Other Services & Charges	206,156	172,412	149,613	296,683	280,825	288,369
Capital Outlay	-	1,587	1,385	59,000	-	-
Operating Transfers	9,058	-	-	-	-	-
<i>Total Juvenile Ct Admin.</i>	<i>1,088,188</i>	<i>1,088,257</i>	<i>1,188,399</i>	<i>1,503,421</i>	<i>1,424,125</i>	<i>1,479,844</i>
<i>Percent Change from Previous Year</i>	<i>17.5%</i>	<i>0.0%</i>	<i>9.2%</i>	<i>26.5%</i>	<i>-5.3%</i>	<i>3.9%</i>
1941 Juvenile Ct - Healthy Choices Girls						
Other Services & Charges	15,217	56,585	44,129	25,873	-	-
<i>Total Juvenile Ct Healthy Choice Girl</i>	<i>15,217</i>	<i>56,585</i>	<i>44,129</i>	<i>25,873</i>	<i>-</i>	<i>-</i>
<i>Percent Change from Previous Year</i>	<i>0.0%</i>	<i>271.9%</i>	<i>-22.0%</i>	<i>-41.4%</i>	<i>-100.0%</i>	<i>0.0%</i>
1945 Juvenile Court - Comm Justice Center						
Salaries & Wages	47,433	86,184	43,109	151,776	137,449	141,847
Benefits	10,446	21,689	11,492	49,988	55,035	61,114
Supplies	8,417	14,027	3,424	6,050	6,050	6,050
Other Services & Charges	36,904	85,381	99,905	90,707	86,264	86,264
Capital Outlay	-	-	-	500	500	500
Operating Transfers	1,076	-	2,763	3,000	3,000	3,000
<i>Total Juvenile Ct -Comm Justice Ctr</i>	<i>104,276</i>	<i>207,281</i>	<i>160,693</i>	<i>302,021</i>	<i>288,298</i>	<i>298,775</i>
<i>Percent Change from Previous Year</i>	<i>0.0%</i>	<i>98.8%</i>	<i>-22.5%</i>	<i>87.9%</i>	<i>-4.5%</i>	<i>3.6%</i>
1950 Juvenile Court - CJS						
Salaries & Wages	173,823	186,746	161,494	122,673	122,636	124,636
Benefits	45,384	45,165	42,523	34,444	36,461	40,862
Supplies	3,034	4,668	2,384	2,700	2,700	2,700
Other Services & Charges	106,543	93,898	102,272	99,434	106,582	106,584
Operating Transfers	2,359	4,463	-	-	-	-
<i>Total Juvenile Ct - CJS</i>	<i>331,143</i>	<i>334,940</i>	<i>308,673</i>	<i>259,251</i>	<i>268,379</i>	<i>274,782</i>
<i>Percent Change from Previous Year</i>	<i>-9.7%</i>	<i>1.1%</i>	<i>-7.8%</i>	<i>-16.0%</i>	<i>3.5%</i>	<i>2.4%</i>
1953 Juvenile Court - Parole Detention						
Salaries & Wages	49,538	35,275	41,753	36,873	37,923	39,020
Benefits	12,783	8,769	11,006	10,830	11,730	13,171
Supplies	1,851	386	-	-	1,500	1,500
Other Services & Charges	-	2,877	-	3,332	8,000	8,000
Capital Outlay	1,531	-	-	-	849	849
Operating Transfers	731	-	-	-	-	-
<i>Total Juvenile Ct - Parole Det.</i>	<i>66,434</i>	<i>47,307</i>	<i>52,759</i>	<i>51,035</i>	<i>60,002</i>	<i>62,540</i>
<i>Percent Change from Previous Year</i>	<i>-16.1%</i>	<i>-28.8%</i>	<i>11.5%</i>	<i>-3.3%</i>	<i>17.6%</i>	<i>4.2%</i>

continued on next page

Expenditures Summary continued

	Actual 2001	Actual 2002	Actual 2003	Budget 2004	Budget 2005	Budget 2006
1954 Juvenile Court - Commit Alt Pr						
Salaries & Wages	9,198	-	-	-	-	-
Benefits	2,469	-	-	-	-	-
Supplies	-	-	-	-	-	-
Other Services & Charges	961	-	-	-	-	-
Operating Transfers	555	-	-	-	-	-
<i>Total Juvenile Ct - Commit</i>	<i>13,183</i>	<i>-</i>	<i>-</i>	<i>-</i>	<i>-</i>	<i>-</i>
<i>Percent Change from Previous Year</i>	<i>-69.7%</i>	<i>-100.0%</i>	<i>0.0%</i>	<i>0.0%</i>	<i>0.0%</i>	<i>0.0%</i>
1957 Juvenile Court - Community Bld						
Other Services & Charges	23,154	-	-	-	-	-
<i>Total Juvenile Ct - Community Bld</i>	<i>23,154</i>	<i>-</i>	<i>-</i>	<i>-</i>	<i>-</i>	<i>-</i>
<i>Percent Change from Previous Year</i>	<i>-37.9%</i>	<i>-100.0%</i>	<i>0.0%</i>	<i>0.0%</i>	<i>0.0%</i>	<i>0.0%</i>
1959 Juvenile Court - Becca Bill						
Salaries & Wages	83,897	43,462	43,609	51,015	52,164	52,164
Benefits	23,619	10,728	11,590	13,150	14,944	16,672
Supplies	1,869	-	-	500	500	500
Other Services & Charges	20,523	-	860	2,022	1,750	1,750
Capital Outlay	3,074	-	-	-	-	-
Operating Transfers	1,244	-	-	-	-	-
<i>Total Juvenile Ct - Becca Bill</i>	<i>134,226</i>	<i>54,190</i>	<i>56,059</i>	<i>66,687</i>	<i>69,358</i>	<i>71,086</i>
<i>Percent Change from Previous Year</i>	<i>71.1%</i>	<i>-59.6%</i>	<i>3.4%</i>	<i>19.0%</i>	<i>4.0%</i>	<i>2.5%</i>
1960 Juvenile Court - Trans.						
Other Services & Charges	12,459	5,928	-	-	-	-
<i>Total Juvenile Ct - Trans.</i>	<i>12,459</i>	<i>5,928</i>	<i>-</i>	<i>-</i>	<i>-</i>	<i>-</i>
<i>Percent Change from Previous Year</i>	<i>3.4%</i>	<i>-52.4%</i>	<i>-100.0%</i>	<i>0.0%</i>	<i>0.0%</i>	<i>0.0%</i>
1961 Juvenile Court - DSHS						
Salaries & Wages	48,918	38,923	20,259	-	-	-
Benefits	13,073	12,869	8,915	-	-	-
Supplies	-	606	136	600	600	600
Other Services & Charges	5,600	9,806	9,638	1,150	1,150	1,150
Operating Transfers	647	-	-	-	-	-
<i>Total Juvenile Ct - DSHS</i>	<i>68,238</i>	<i>62,204</i>	<i>38,948</i>	<i>1,750</i>	<i>1,750</i>	<i>1,750</i>
<i>Percent Change from Previous Year</i>	<i>-15.5%</i>	<i>-8.8%</i>	<i>-37.4%</i>	<i>-95.5%</i>	<i>0.0%</i>	<i>0.0%</i>
1962 Juvenile Court - CDDA Grant						
Salaries & Wages	-	5,006	18,709	26,442	26,472	26,502
Benefits	-	1,192	4,512	6,665	7,517	8,393
Supplies	-	206	995	2,070	2,070	2,070
Other Services & Charges	-	17,276	33,865	23,900	23,018	23,018
<i>Total Juvenile Ct - CDDA Grant</i>	<i>-</i>	<i>23,680</i>	<i>58,081</i>	<i>59,077</i>	<i>59,077</i>	<i>59,983</i>
<i>Percent Change from Previous Year</i>	<i>-100.0%</i>	<i>0.0%</i>	<i>145.3%</i>	<i>1.7%</i>	<i>0.0%</i>	<i>1.5%</i>

continued on next page

Expenditures Summary continued

	Actual 2001	Actual 2002	Actual 2003	Budget 2004	Budget 2005	Budget 2006
1963 Juvenile Court - CJAA-DSHS Misc						
Salaries & Wages	5,253	12,990	24,558	33,672	43,540	45,221
Benefits	1,379	3,622	7,027	9,470	15,648	17,452
Supplies	160	2,478	3,266	3,000	1,002	1,002
Other Services & Charges	37,005	14,048	16,939	29,661	15,613	15,615
Capital Outlay	-	1,721	-	-	-	-
Operating Transfers	91	-	-	-	-	-
<i>Total Juvenile Ct-CJAA-DSHS</i>	<i>43,888</i>	<i>34,859</i>	<i>51,790</i>	<i>75,803</i>	<i>75,803</i>	<i>79,290</i>
<i>Percent Change from Previous Year</i>	<i>-28.6%</i>	<i>-20.6%</i>	<i>48.6%</i>	<i>46.4%</i>	<i>0.0%</i>	<i>4.6%</i>
1964 Juvenile Court - Teen Court						
Other Services & Charges	83,974	72,714	33,297	15,000	18,500	10,000
<i>Total Juvenile Ct - Teen Court</i>	<i>83,974</i>	<i>72,714</i>	<i>33,297</i>	<i>15,000</i>	<i>18,500</i>	<i>10,000</i>
<i>Percent Change from Previous Year</i>	<i>297.2%</i>	<i>-13.4%</i>	<i>-54.2%</i>	<i>-55.0%</i>	<i>23.3%</i>	<i>-45.9%</i>
1965 Juvenile Court - GJJAC - JDAI						
Salaries & Wages	-	-	-	2,500	-	-
Benefits	-	-	-	229	-	-
Supplies	-	-	-	1,900	-	-
Other Services & Charges	-	-	-	5,100	-	-
<i>Total Juvenile Ct - GJJAC-JDAI</i>	<i>-</i>	<i>-</i>	<i>-</i>	<i>9,729</i>	<i>-</i>	<i>-</i>
<i>Percent Change from Previous Year</i>	<i>0.0%</i>	<i>0.0%</i>	<i>0.0%</i>	<i>0.0%</i>	<i>-100.0%</i>	<i>0.0%</i>
1970 Juvenile Court - Res. Care						
Salaries & Wages	767,730	772,197	755,377	734,793	760,263	787,948
Benefits	196,246	186,232	197,891	232,226	284,237	314,274
Supplies	25,335	21,500	23,380	59,872	88,200	88,200
Other Services & Charges	49,108	28,611	11,391	213,378	191,247	191,247
Capital Outlay	2,627	1,084	1,459	-	10,000	-
Operating Transfers	9,625	-	-	-	-	-
<i>Total Juvenile Ct - Res. Care</i>	<i>1,050,671</i>	<i>1,009,624</i>	<i>989,498</i>	<i>1,240,269</i>	<i>1,333,947</i>	<i>1,381,669</i>
<i>Percent Change from Previous Year</i>	<i>0.4%</i>	<i>-3.9%</i>	<i>-2.0%</i>	<i>25.3%</i>	<i>7.6%</i>	<i>3.6%</i>
1971 Juvenile Work Crew						
Salaries & Wages	16,859	35,291	76,051	-	-	-
Benefits	5,483	9,315	23,048	-	-	-
Supplies	279	1,976	1,237	-	-	-
Other Services & Charges	810	7,779	841	-	-	-
Capital Outlay	-	1,527	-	-	-	-
Operating Transfers	445	-	-	-	-	-
<i>Total Juvenile Ct Work Crew</i>	<i>23,876</i>	<i>55,888</i>	<i>101,177</i>	<i>-</i>	<i>-</i>	<i>-</i>
<i>Percent Change from Previous Year</i>	<i>-46.6%</i>	<i>134.1%</i>	<i>81.0%</i>	<i>-100.0%</i>	<i>0.0%</i>	<i>0.0%</i>
1980 Juvenile Court - Medical/Dental						
Supplies	6,849	9,040	6,705	-	-	-
Other Services & Charges	8,766	6,823	3,061	-	-	-
<i>Total Juvenile Ct - Med/Dental</i>	<i>15,615</i>	<i>15,863</i>	<i>9,766</i>	<i>-</i>	<i>-</i>	<i>-</i>
<i>Percent Change from Previous Year</i>	<i>-0.2%</i>	<i>1.6%</i>	<i>-38.4%</i>	<i>-100.0%</i>	<i>0.0%</i>	<i>0.0%</i>

continued on next page

Expenditures Summary continued

	Actual 2001	Actual 2002	Actual 2003	Budget 2004	Budget 2005	Budget 2006
1985 Juvenile Court - Alcoa						
Salaries & Wages	-	6,285	21,039	-	-	-
Benefits	-	1,860	6,411	-	-	-
Supplies	-	365	71	-	-	-
Other Services & Charges	-	-	459	-	-	-
<i>Total Juvenile Ct - Alcoa</i>	-	8,510	27,980	-	-	-
<i>Percent Change from Previous Year</i>	0.0%	0.0%	228.8%	-100.0%	0.0%	0.0%
1990 Juvenile Court - Facilities						
Other Services & Charges	252,537	312,090	302,344	-	-	-
<i>Total Juvenile Ct. - Facilities</i>	252,537	312,090	302,344	-	-	-
<i>Percent Change from Previous Year</i>	6.0%	23.6%	-3.1%	-100.0%	0.0%	0.0%
1995 Juvenile - DOE Comm Litter Clean						
Salary & Wages	3,834	3,874	3,926	-	-	-
Benefits	496	526	591	-	-	-
<i>Total Juvenile Ct - DOE</i>	4,330	4,400	4,517	-	-	-
<i>Percent Change from Previous Year</i>	0.0%	0.0%	-80.5%	-100.0%	0.0%	0.0%
<b>TOTAL JUVENILE COURT</b>	<b>3,331,409</b>	<b>3,394,320</b>	<b>3,428,110</b>	<b>3,609,916</b>	<b>3,599,239</b>	<b>3,719,719</b>
<i>Percent Change from Previous Year</i>	8.9%	1.9%	1.0%	5.3%	-0.3%	3.3%

## Services

### **Community Supervision (Probation)**

The supervision of juvenile offenders by probation officers as defined by the order of disposition by the court or conditions contained in an individualized agreement between probation officer and offender.

### **Court Services/Intake**

Provides court-related information requested by the judge, prosecutor, and public defender; keeps offenders informed of all hearings; administers short-form risk assessment; provides pre-trial monitoring.

### **Community Justice Accountability Act (CJAA)**

Provides Aggression Replacement Training (ART), Family Functional Therapy (FFT) and coordination of services to youth and their families.

### **Parole Detention/Diagnostics**

Custody & care of youth held in detention who are under JRA Parole Supervision or pending transportation to the institutions. Pre/post diagnostic report writing on youth committed to JRA.

### **Juvenile Detention**

Juvenile Detention is a safe and secure environment for youth who have been arrested pending a court appearance or who have been sentenced to serve time after a court appearance.

### **Community Justice Programs**

Community justice programs provide community-based alternatives to detention and case management support for probation officers.

### **Consolidated Juvenile Services - Diversion**

Eligible minor & first offenders are referred to the Diversion Unit, where they may choose to enter a diversion agreement in lieu of going to court and being placed on probation.

### **Consolidated Juvenile Services - SSODA**

All first-time adjudicated felony sex offenders are evaluated for risk to the community and suitability for community based treatment.

### **Becca Bill Program**

The Becca Bill programs fall into 3 categories: At-Risk Youth; Children in Need of Services (CHINS); and Truancy. Court intervention, case planning, and monitoring services are provided.

### **Victim Restoration Program**

Provides advocacy services to victims of juvenile crime including Court process information, victim impact statements, restitution claim processing and collection, and general support.

### **Chemical Dependency Disposition Alternative (CDDA)**

E3SHB 3900 allows for the evaluation of chemically abusing youth to be considered for a disposition alternative that allows judges to order treatment instead of confinement.