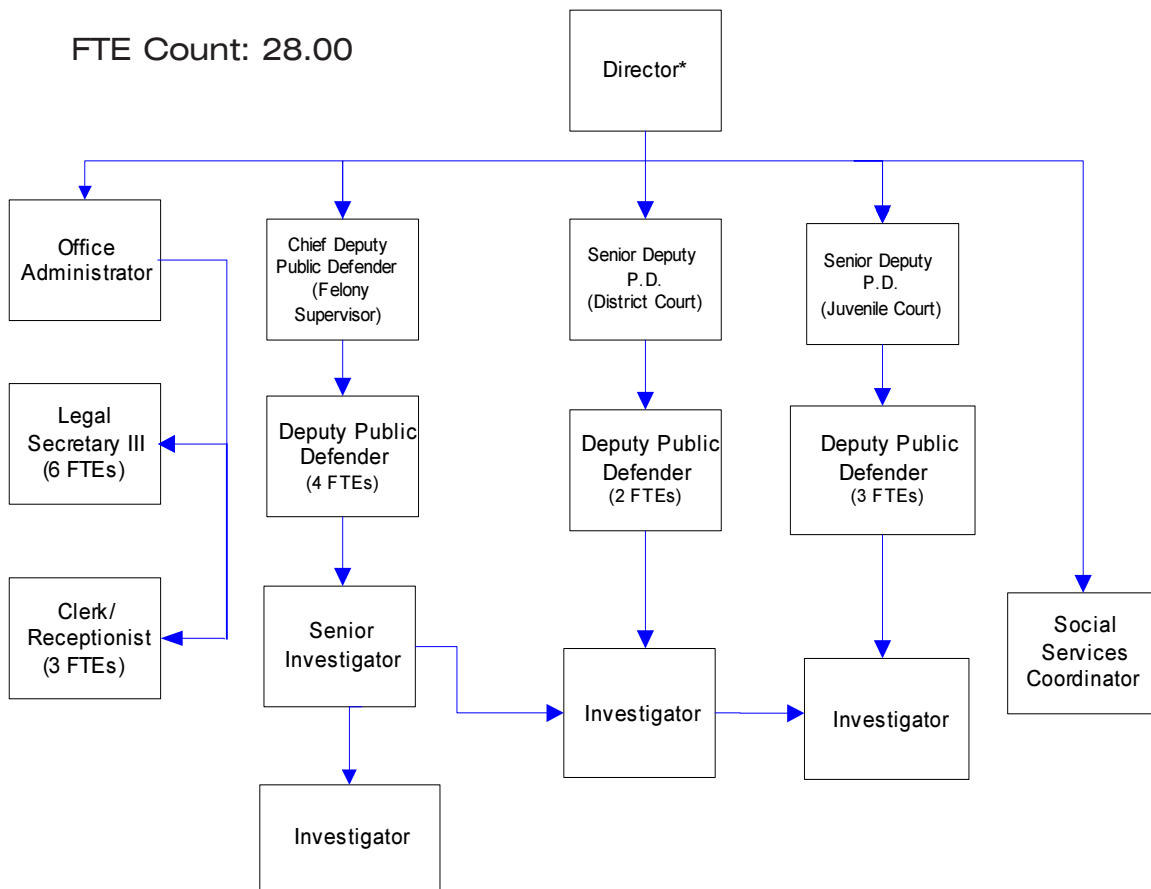


Public Defender's Office

The Public Defender's Office provides constitutionally mandated indigent legal defense for: felony, misdemeanor and probation violation charges against adults and juveniles in Whatcom County Superior and District Courts; parents in juvenile dependency matters; involuntary mental and alcohol commitments.



**Director to carry a half-time caseload.*

Mission & Objectives

Mission

The Public Defender's Office was created in 1982 by county ordinance pursuant to RCW 36.26 and mandated to provide legal representation for those who cannot afford an attorney and who are entitled to legal defense at public expense pursuant to the constitutions of the United States and the State of Washington, or pursuant to statute. The overall mission of the department is to provide high quality legal representation as efficiently and economically as possible, while maintaining the confidence of clients that they are receiving competent and skilled representation.

Objectives

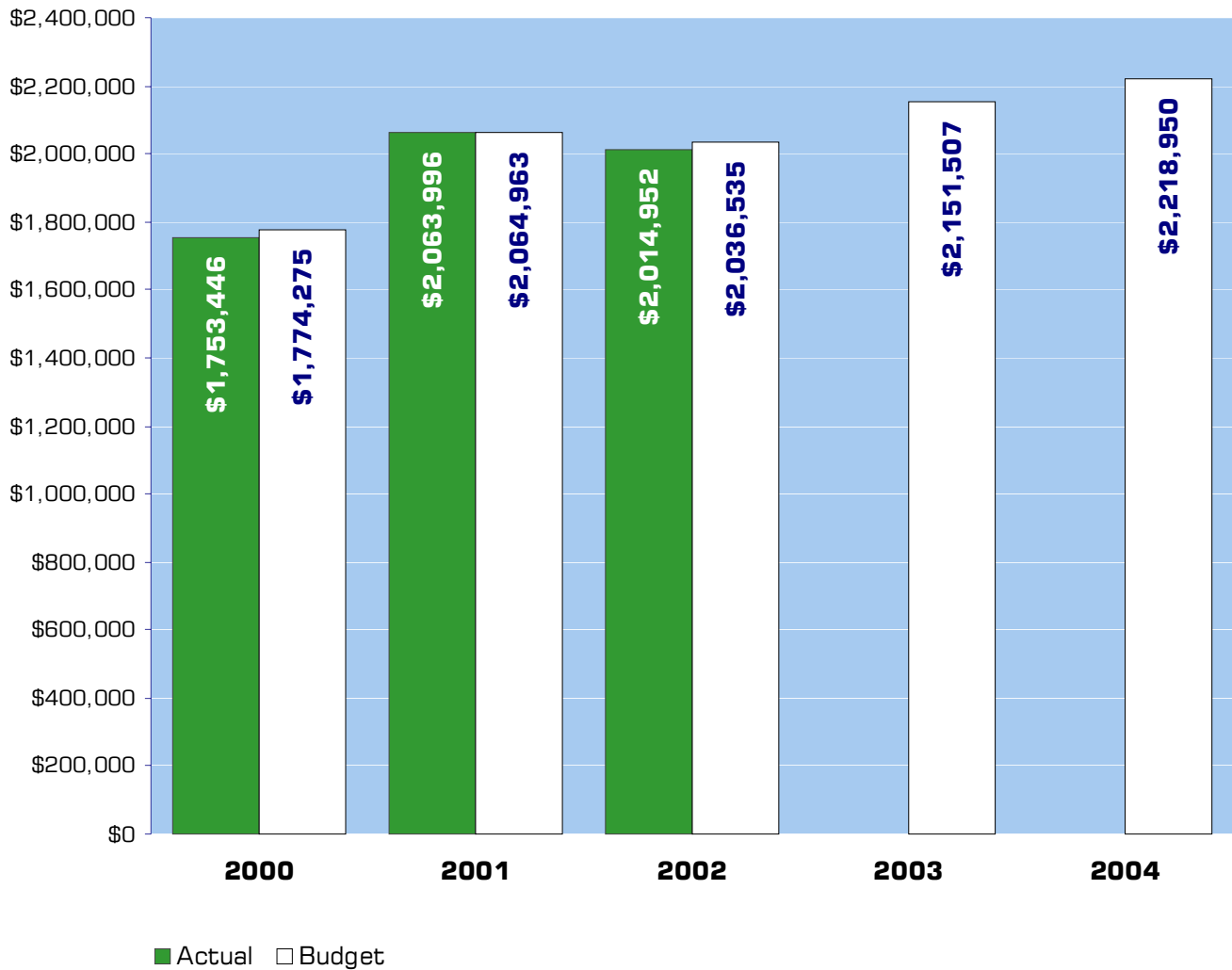
- Continue to provide competent representation to each of our clients. This is both a constitutional and an ethical requirement. It must always remain as the core objective and mission of the Public Defender's Office. With increasing adult felony caseloads and budgetary restrictions this becomes increasingly difficult, but remains mandatory.
- Work toward bringing our caseloads closer to national and state standards. The Whatcom County Law and Justice Plan recommends that staffing of the Public Defender's Office be increased to meet these standards, per Goal 2B of the Whatcom County Strategic Plan. We project that from 2002 through 2004, our adult felony cases will have increased over 11%, misdemeanor cases will have increased substantially (approximately 15%), and the juvenile civil cases will have increased by 62%, with only a slight decrease in juvenile delinquency filings (1.15%). In addition, Juvenile Probation cases have increased by 15%. This objective can only be met if our caseload decreases, which is subject to the crime rate in Whatcom County, the arrest rate, and the exercise of discretion of the Prosecuting Attorney's Office. If our caseload does not decrease, this goal can only be met through an increase in attorney staffing.
- Continue to work with other branches of the criminal justice system, the Department of Social and Health Services, and the Attorney General's Office, to continue the implementation and expansion of drug courts and family treatment courts in Whatcom County. However, it should be noted that our ability to expand support to these various drug courts is limited by our other caseloads. Drug courts, at both the adult and juvenile level, have proven to be highly effective in reducing criminal behavior and curing chemical dependency. Our local adult drug court, in existence since 1999, has proven to be extremely successful. There is hope that we will be able to join with the rest of the criminal justice system to continue to support and expand these drug courts.
- Continue to attempt to reach out to the community. In the past year we have kept contact with representatives of both the Nooksack and Lummi tribes and have worked with the Lummi Tribal Drug Court. However, we hope to increase our efforts to reach out to other community groups, such as the Hispanic community, as well as other community organizations, to determine how better we can serve our clients and what additional resources can be made available to

Objectives continued

provide assistance to our clients. One specific objective is an initiative to work with Columbia Legal Services to provide more holistic legal services to our mental health clients beyond what we can provide only within the context of criminal charges. These goals are consistent with Goals 3A and 6A of the Whatcom County Strategic Plan.

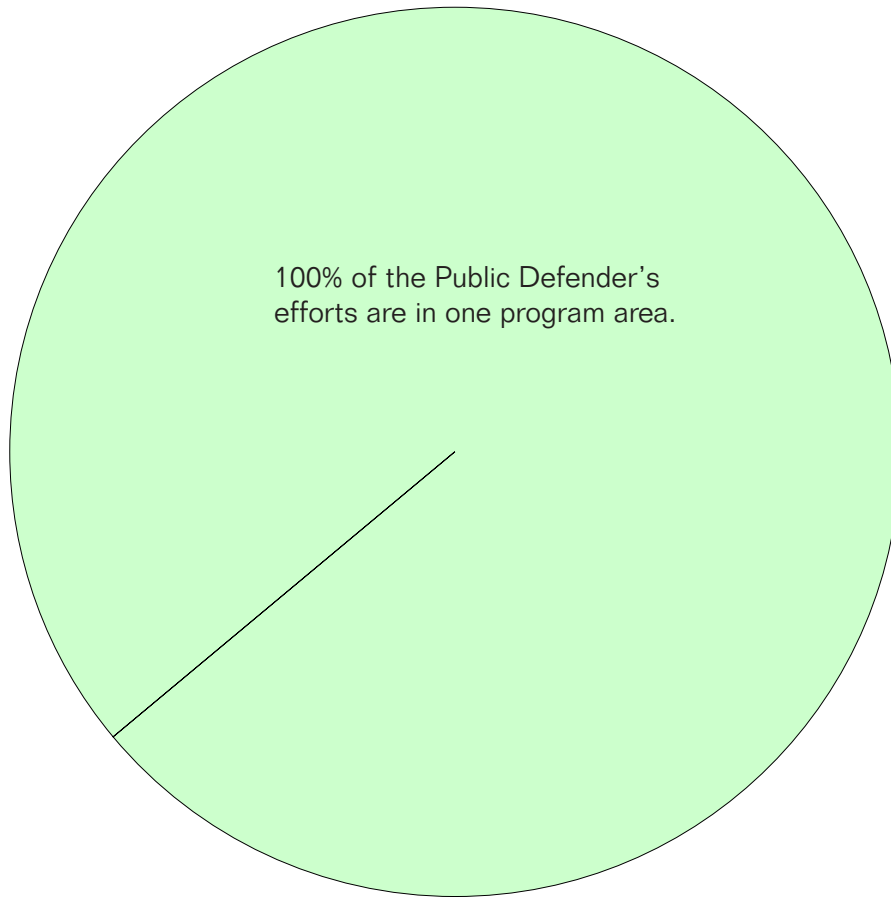
- Continue to seek appropriate grant funds that we are eligible to apply for, and that would fit within our mission to help better serve our clients, as well as benefit Whatcom County as a whole. This goal is consistent with Goal 4B of the Whatcom County Strategic Plan.
- Continue the development of a policy and procedures manual for the Whatcom County Public Defender's Office.

Expenditure Trends



NOTE: Capital expenditures and interfund operating transfers are not shown to more accurately reflect ongoing operational costs.

2004 Budget by Program



NOTE: Capital expenditures are not shown to more accurately reflect ongoing operational costs.

Program Summary

	Actual 2000	Actual 2001	Actual 2002	Amended Budget 2003	Budget 2004	\$ Change 2003 to 2004	% Change 2003 to 2004
OPERATIONS							
General Fund							
2650 Public Defender	1,753,446	1,818,220	2,008,109	2,151,507	2,218,950	67,443	3.13%
2655 Public Defender-Kinney	-	245,776	6,843	-	-	-	0.00%
<i>Total Public Defender Operations</i>	<i>1,753,446</i>	<i>2,063,996</i>	<i>2,014,952</i>	<i>2,151,507</i>	<i>2,218,950</i>	<i>67,443</i>	<i>3.13%</i>
CAPITAL							
General Fund							
2650 Public Defender	-	4,836	-	-	-	-	0.00%
2655 Public Defender-Kinney	-	10,168	-	-	-	-	0.00%
<i>Total Public Defender Capital</i>	<i>-</i>	<i>15,004</i>	<i>-</i>	<i>-</i>	<i>-</i>	<i>-</i>	<i>0.00%</i>
TRANSFERS							
General Fund							
2650 Public Defender	-	15,692	-	-	-	-	0.00%
2655 Public Defender-Kinney	-	1,457	-	-	-	-	0.00%
<i>Total Public Defender Transfers</i>	<i>-</i>	<i>17,149</i>	<i>-</i>	<i>-</i>	<i>-</i>	<i>-</i>	<i>0.00%</i>
TOTAL PUBLIC DEFENDER	1,753,446	2,096,149	2,014,952	2,151,507	2,218,950	67,443	3.13%

2004 Funding Sources

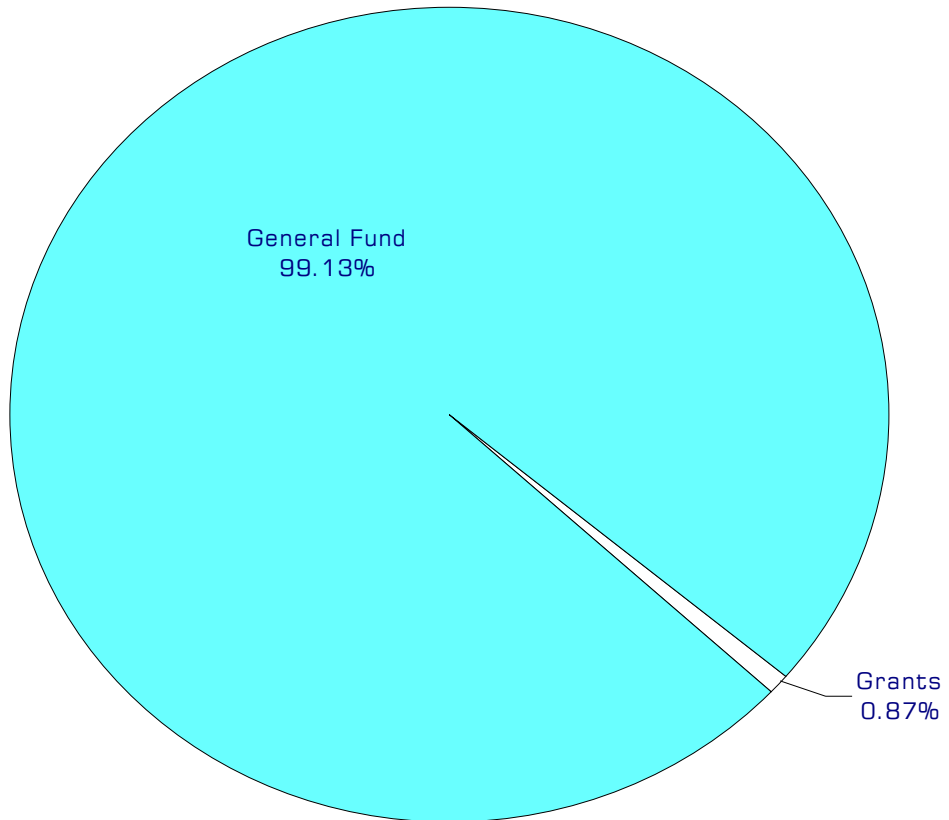
Grants	19,215
General Fund	2,199,735
<hr/>	<hr/>
Total Funding	2,218,950

Grants

Revenue received from the State of Washington, based on the funding model for the Becca Bill.

General Fund

Undedicated General Fund resources.



Performance / Activity Measures

	Actual 2000	Actual 2001	Actual 2002	Projected 2003	Projected 2004
Felonies	1,218	1,193	1,431	1,524	1,600
Probation Violations (Sup/Dist Cts)	794	757	466	315	320
Misdemeanors	1,405	1,211	1,305	1,479	1,500
Juvenile (Delinquency)	1,174	987	961	939	950
Juvenile (Probation)	742	791	692	749	800
Juvenile (Dependency)	137	139	137	213	223
Mental/Alcohol Commitments	212	235	225	209	200
Appeals/Other	35	24	49	63	65
Total	5,717	5,337	5,266	5,492	5,658

Expenditures Summary

	Actual 2000	Actual 2001	Actual 2002	Amended Budget 2003	Budget 2004	\$ Change 2003 to 2004	% Change 2003 to 2004
GENERAL FUND							
2650 Public Defender							
Salaries & Wages	1,184,104	1,174,566	1,355,826	1,457,521	1,488,222	30,701	2.11%
Benefits	273,376	320,360	324,540	358,487	388,566	30,079	8.39%
Supplies	23,266	36,155	32,384	33,380	41,305	7,925	23.74%
Other Services & Charges	272,700	287,139	295,359	302,119	300,857	(1,262)	-0.42%
Capital Outlay	-	4,836	-	-	-	-	0.00%
Operating Transfers	-	15,692	-	-	-	-	0.00%
<i>Total Public Defender</i>	1,753,446	1,838,748	2,008,109	2,151,507	2,218,950	67,443	3.13%
2655 Public Defender-Kinney							
Salaries & Wages	-	150,118	-	-	-	-	0.00%
Benefits	-	35,442	-	-	-	-	0.00%
Supplies	-	4,699	-	-	-	-	0.00%
Other Services & Charges	-	55,517	6,843	-	-	-	0.00%
Capital Outlay	-	10,168	-	-	-	-	0.00%
Operating Transfers	-	1,457	-	-	-	-	0.00%
<i>Total Public Defender-Kinney</i>	-	257,401	6,843	-	-	-	0.00%
TOTAL PUBLIC DEFENDER	1,753,446	2,096,149	2,014,952	2,151,507	2,218,950	67,443	3.13%

