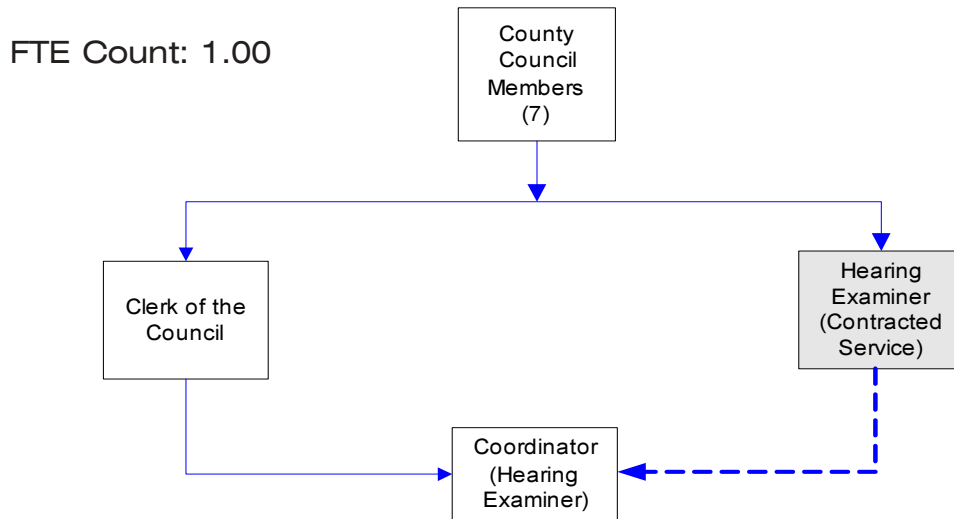


Hearing Examiner

Serves as a quasi-judicial officer to hear, evaluate, and decide specific land use and development proposals.

- No legislative function - applies laws and ordinances passed by the County Council.
- Public hearings are generally held weekly, as needed. Please call for current schedule.
- Files are available for public review by appointment.



Mission & Objectives

Mission

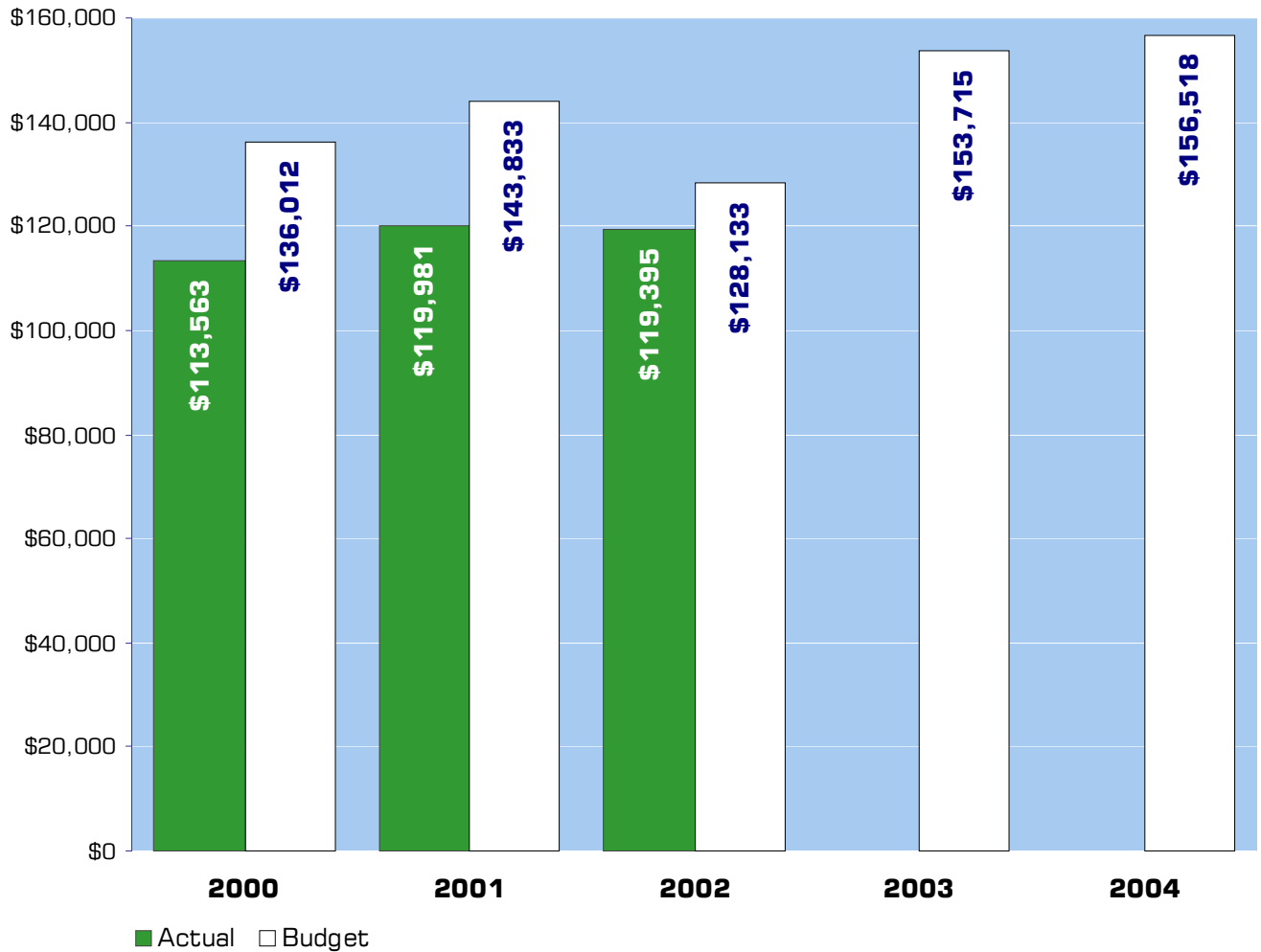
Provide Whatcom County with a system for considering and applying regulatory enactments which will best satisfy the following:

- 1) The need to separate the application of regulatory land controls from planning;
- 2) The need to better protect and promote the interest of the public and private elements of the community; and
- 3) The need to expand the principles of fairness and due process in open record hearings.

Objectives

- Conduct open record hearings on regulatory enactments on behalf of the County Council in accordance with guidelines set forth in the Open Public Meetings Act.
- Submit all recommendations and decisions to the County Council in a timely manner, as required by law.
- Integrating growth management, SEPA, shoreline and other processes as required.
- Update issue tracking database to promote consistency and reliability in land use matters, including better access to past decisions.
- Integrate the work load created by site-specific rezones, increased shoreline applications, Health Department appeals, and River and Flood Division applications and appeals.
- Reorganize current offices (which were temporary, but are now permanent) to allow for better use of space.
- Improve access and storage for application files and current zoning maps for the county and city and begin archiving outdated records in accordance with state guidelines.
- Integrate new jurisdictional responsibilities resulting from interlocal agreements and Growth Management Act (GMA) mandates.
- Update computer system to provide better access to legal materials in both the office and in the hearing room.

Expenditure Trends



NOTE: Capital expenditures and interfund operating transfers are not shown to more accurately reflect ongoing operational costs.

2004 Budget by Program



NOTE: Capital expenditures and interfund operating and residual equity transfers are not shown to more accurately reflect ongoing operational costs.

Program Summary

Actual 2000	Actual 2001	Actual 2002	Amended Budget 2003	Budget 2004	\$ Change 2003 to 2004	% Change 2003 to 2004
----------------	----------------	----------------	---------------------------	----------------	------------------------------	-----------------------------

OPERATIONS

General Fund

1600 Hearing Examiner	113,563	119,981	119,395	153,715	156,518	2,803	1.82%
<i>Total Hearing Examiner Operations</i>	113,563	119,981	119,395	153,715	156,518	2,803	1.82%

TRANSFERS

General Fund

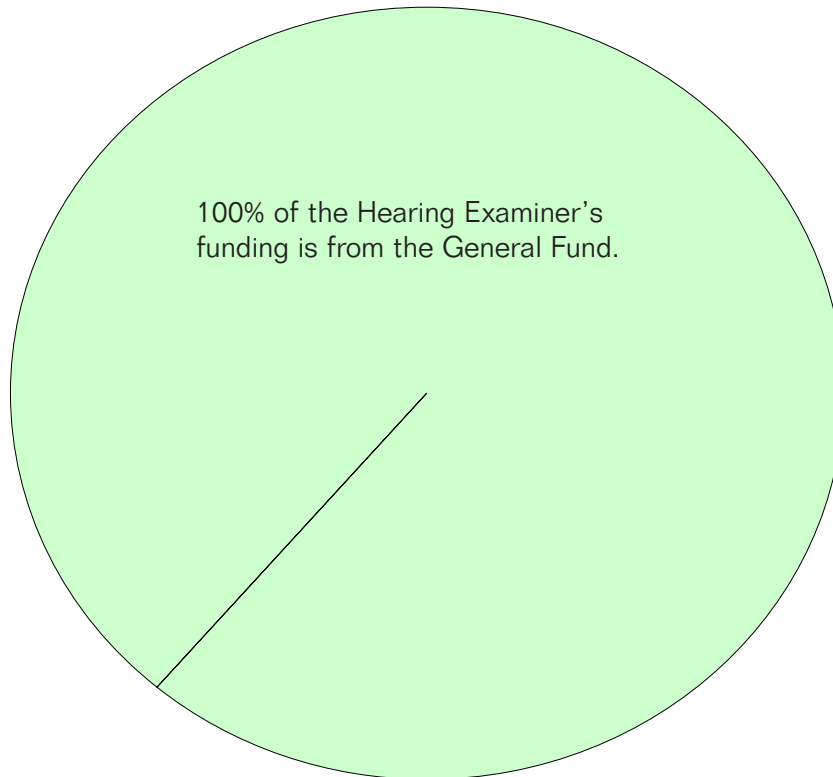
1600 Hearing Examiner	-	492	-	-	-	-	0.00%
<i>Total Hearing Examiner Transfers</i>	-	492	-	-	-	-	0.00%

TOTAL HEARING EXAMINER	113,563	120,473	119,395	153,715	156,518	2,803	1.82%
-------------------------------	---------	---------	---------	---------	---------	-------	-------

2004 Funding Sources

<u>General Fund</u>	156,518
Total Funding	156,518

General Fund
Undedicated General Fund resources.



Performance / Activity Measures

	Actual 2000	Actual 2001	Actual 2002	Projected 2003	Projected 2004
Shoreline Applications		26	36	40	40
Council Remands				1	1
Subdivisions				45	50
Revisions	30	30	30	30	30
Public Hearings	95	95	87	87	87
Administrative Appeals	7	7	7	10	12
Revocations				3	3
SEPA Appeals				1	2

Expenditures Summary

	Actual 2000	Actual 2001	Actual 2002	Amended Budget 2003	Budget 2004	\$ Change 2003 to 2004	% Change 2003 to 2004
GENERAL FUND							
1600 Hearing Examiner							
Salaries & Wages	36,946	37,726	37,800	41,882	41,688	(194)	-0.46%
Benefits	9,425	9,851	9,814	11,125	12,077	952	8.56%
Supplies	1,769	1,103	1,478	3,690	3,690	-	0.00%
Other Services & Charges	65,423	71,301	70,303	97,018	99,063	2,045	2.11%
Operating Transfers	-	492	-	-	-	-	0.00%
<i>TOTAL HEARING EXAMINER</i>	113,563	120,473	119,395	153,715	156,518	2,803	1.82%