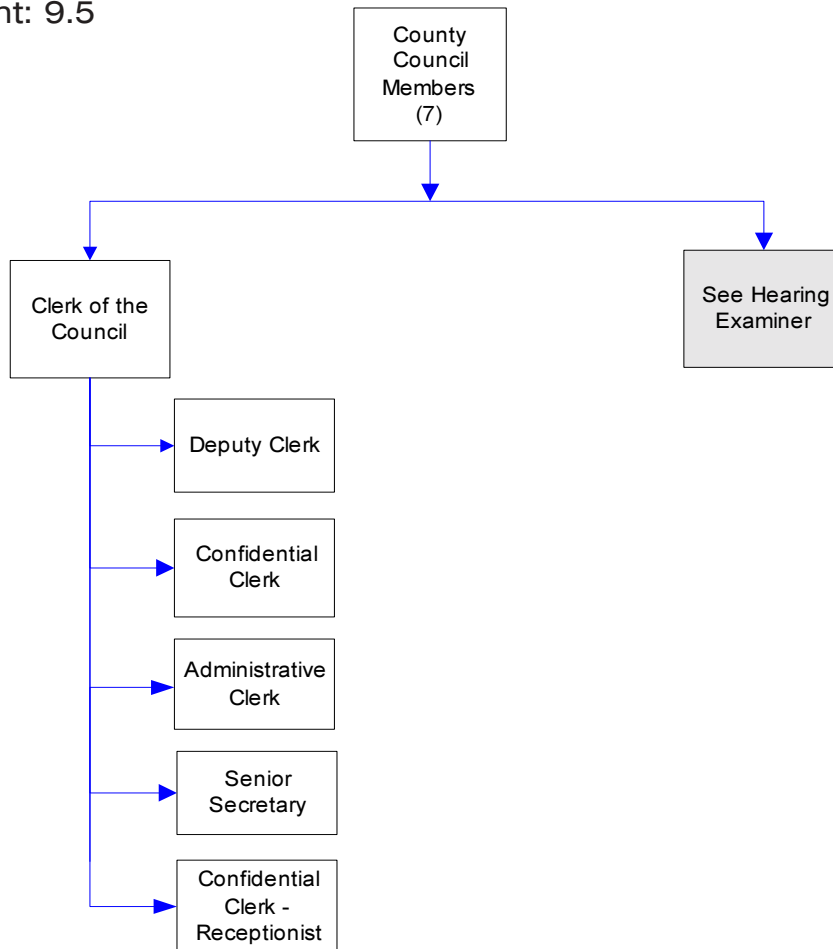


County Council

The legislative branch of Whatcom County government, the County Council comprises seven elected part-time council members. The council meets regularly on every other Tuesday evening and enacts ordinances and resolutions, sets the county budgets, creates policies and hears appeals. Check the library, newspaper or the council office for schedules and agendas.

FTE Count: 9.5



Mission & Objectives

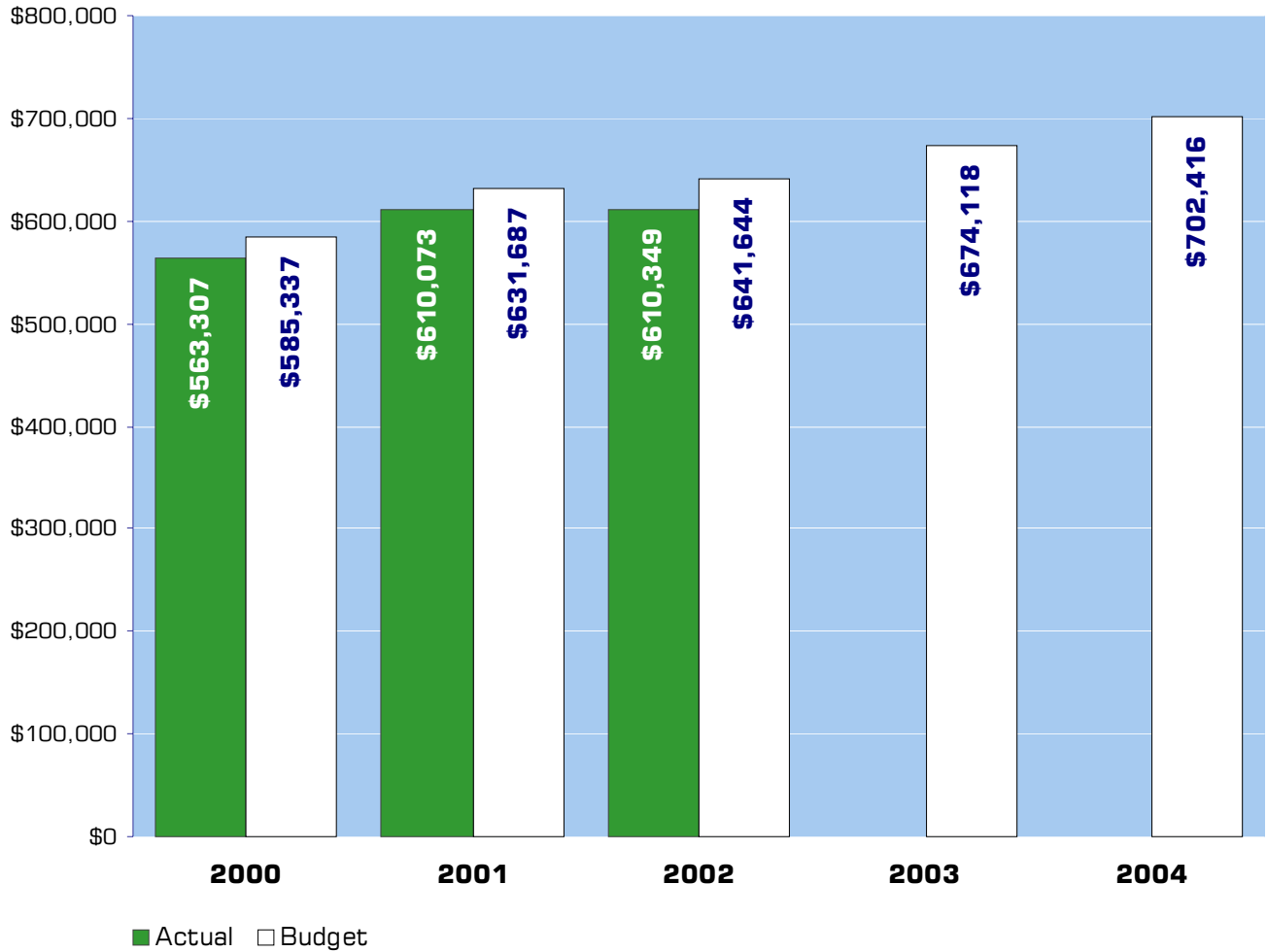
Mission

The County Council is dedicated to providing superior customer service and responsive representation through the creation of laws and policies that promote continual improvement to the health, safety, and welfare of Whatcom County's citizens.

Objectives

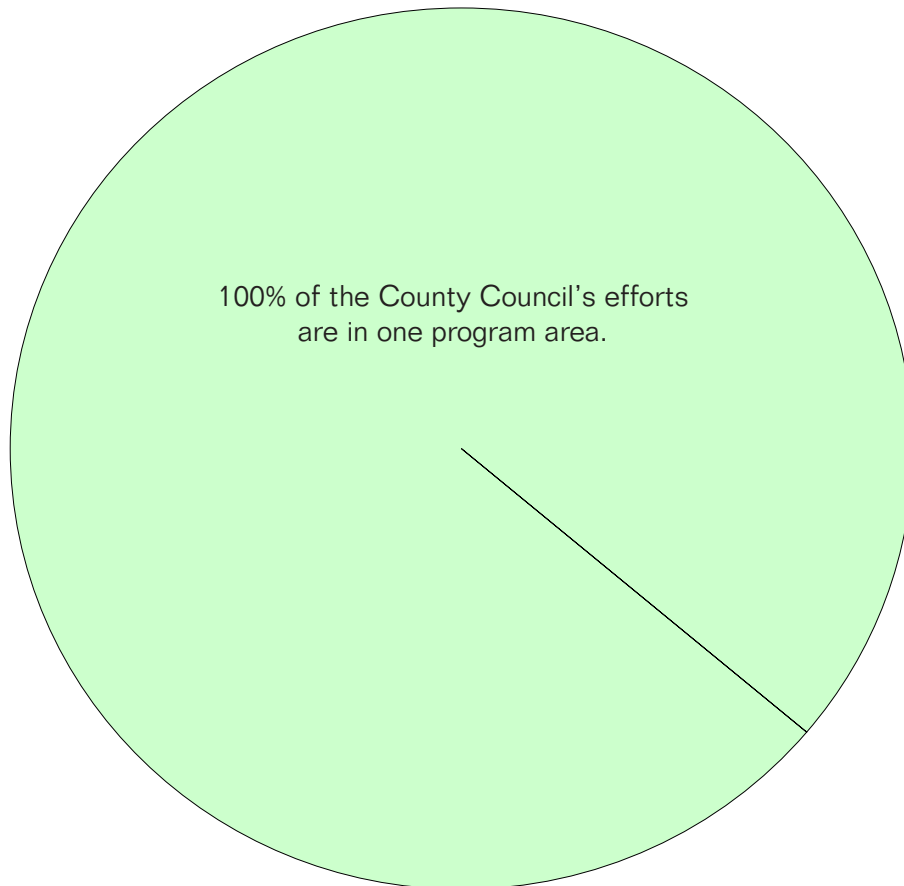
- Design and implement dual-control filing system for all ordinances.
- Prepare proposal for our inclusion in the county-wide electronic document imaging system.
- Design and implement system for tracking, archiving, and destroying expired county contracts, agreements, and franchises.
- Research more effective advertising methods to recruit applicants for vacant positions on county boards, commissions, and committees.
- Complete policy and procedure manual rewrite project.
- Research new county-wide searchable database for council agenda bill items.
- Review and update the content of the Council's library to ensure necessary research materials are readily available.
- Develop and implement new agenda bill data entry process to decrease duplications of efforts.
- Board of Equalization records retention project: archive, microfilm, and catalog records for 1990 - 1997.
- Council records retention project - archive, microfilm, and catalog all records for 1998.

Expenditure Trends



NOTE: Capital expenditures and interfund operating transfers are not shown to more accurately reflect ongoing operational costs.

2004 Budget by Program



NOTE: Capital expenditures are not shown to more accurately reflect ongoing operational costs.

Program Summary

	Actual 2000	Actual 2001	Actual 2002	Amended Budget 2003	Budget 2004	\$ Change 2003 to 2004	% Change 2003 to 2004
OPERATIONS							
General Fund							
1100 County Council	559,123	602,210	603,828	657,025	702,416	45,391	6.91%
1120 Board of Equalization	4,184	7,863	6,521	17,093	-	(17,093)	-100.00%
<i>Total County Council Operations</i>	563,307	610,073	610,349	674,118	702,416	28,298	4.20%
TRANSFERS							
General Fund							
1100 County Council	-	3,904	-	-	-	-	0.00%
<i>Total County Council Transfers</i>	-	3,904	-	-	-	-	0.00%
TOTAL COUNTY COUNCIL	563,307	613,977	610,349	674,118	702,416	28,298	4.20%

2004 Funding Sources

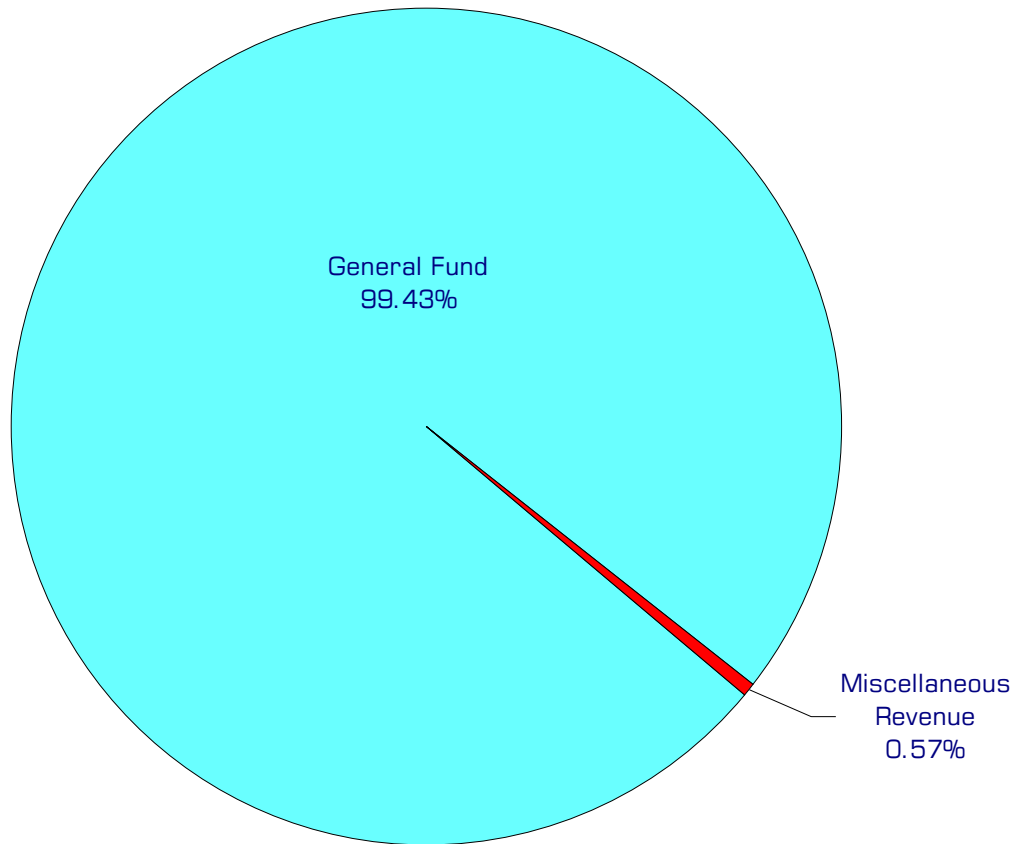
General Fund	698,392
Miscellaneous Revenue	4,024
<hr/>	<hr/>
Total Funding	702,416

General Fund

Undedicated General Fund resources.

Miscellaneous Revenue

Fees collected for photocopies, agenda and council packet subscriptions.



Performance / Activity Measures

	Actual 2000	Actual 2001	Actual 2002	Projected 2003	Projected 2004
Copies Made	110,000	154,000	157,000	150,000	150,000
Correspondence Drafted	348	350	347	350	300
Committee Meetings Attended	102	100	92	100	100
Appeals Processed	6	5	5	8	8
Legal/Public Notices Prepared & Processed	199	200	259	250	250
Board of Equalization Petitions Processed	417	450	310	400	400
Ordinances and Resolutions	119	160	141	160	160
Council Meetings Attended (regular & special)	41	45	57	50	50
Agenda Bills Processed	433	520	530	504	500
Road Vacations Processed	2	2	1	3	2
Pages of Minutes Transcribed		2,475	1,682	2,000	2,000

Expenditures Summary

	Actual 2000	Actual 2001	Actual 2002	Amended Budget 2003	Budget 2004	\$ Change 2003 to 2004	% Change 2003 to 2004
GENERAL FUND							
1100 County Council							
Salaries & Wages	276,706	303,418	320,792	339,856	363,589	23,733	6.98%
Benefits	131,236	143,318	126,780	129,440	147,223	17,783	13.74%
Supplies	27,408	25,172	18,003	27,275	28,175	900	3.30%
Other Services & Charges	123,773	130,302	138,253	160,454	163,429	2,975	1.85%
Operating Transfers	-	3,904	-	-	-	-	0.00%
<i>Total County Council</i>	559,123	606,114	603,828	657,025	702,416	45,391	6.91%
1120 Board of Equalization							
Salaries & Wages	2,850	6,075	5,625	13,050	-	(13,050)	-100.00%
Benefits	232	495	459	1,063	-	(1,063)	-100.00%
Supplies	333	242	46	900	-	(900)	-100.00%
Other Services & Charges	769	1,051	391	2,080	-	(2,080)	-100.00%
<i>Total Board of Equalization</i>	4,184	7,863	6,521	17,093	-	(17,093)	-100.00%
TOTAL COUNTY COUNCIL	563,307	613,977	610,349	674,118	702,416	28,298	4.20%