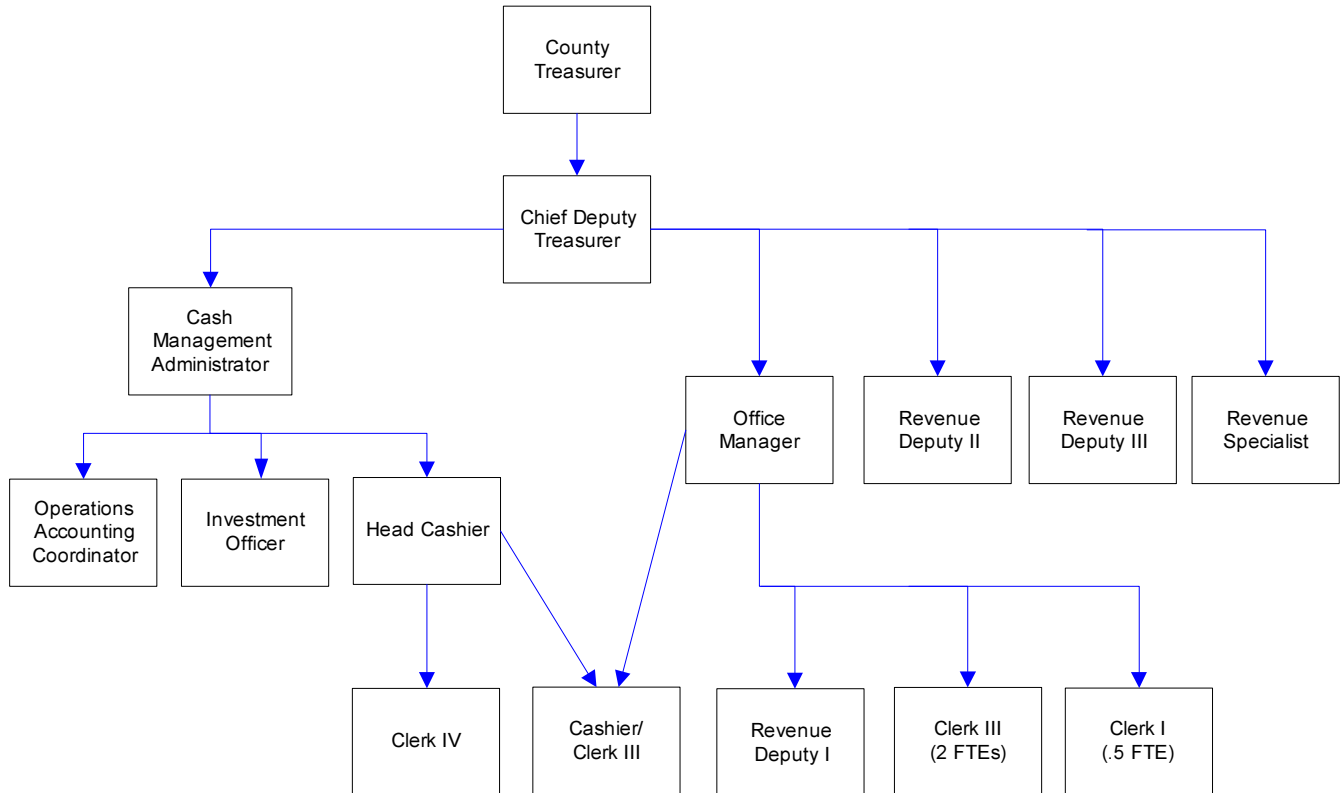


County Treasurer's Office



Mission & Objectives

Mission

Efficiently and effectively collect, report, invest, and manage all monies and debt for Whatcom County and all other junior and special purpose districts. Provide exemplary service to all of our customers by being responsive, courteous, and knowledgeable.

Whatcom County Investment Pool

Manage all cash to achieve maximum potential with safety and public trust of primary concern.

Objectives

General Obligation Bonds

- Provide funds for capital improvement projects. Revenue for annual payments obtained by reimbursements from the appropriate districts or funds.

Road Improvement District

- Provide infrastructure in the Cordata area. Property owners pay an assessment on an amortized schedule which in turn pays the loans or bonds.

Treasurer

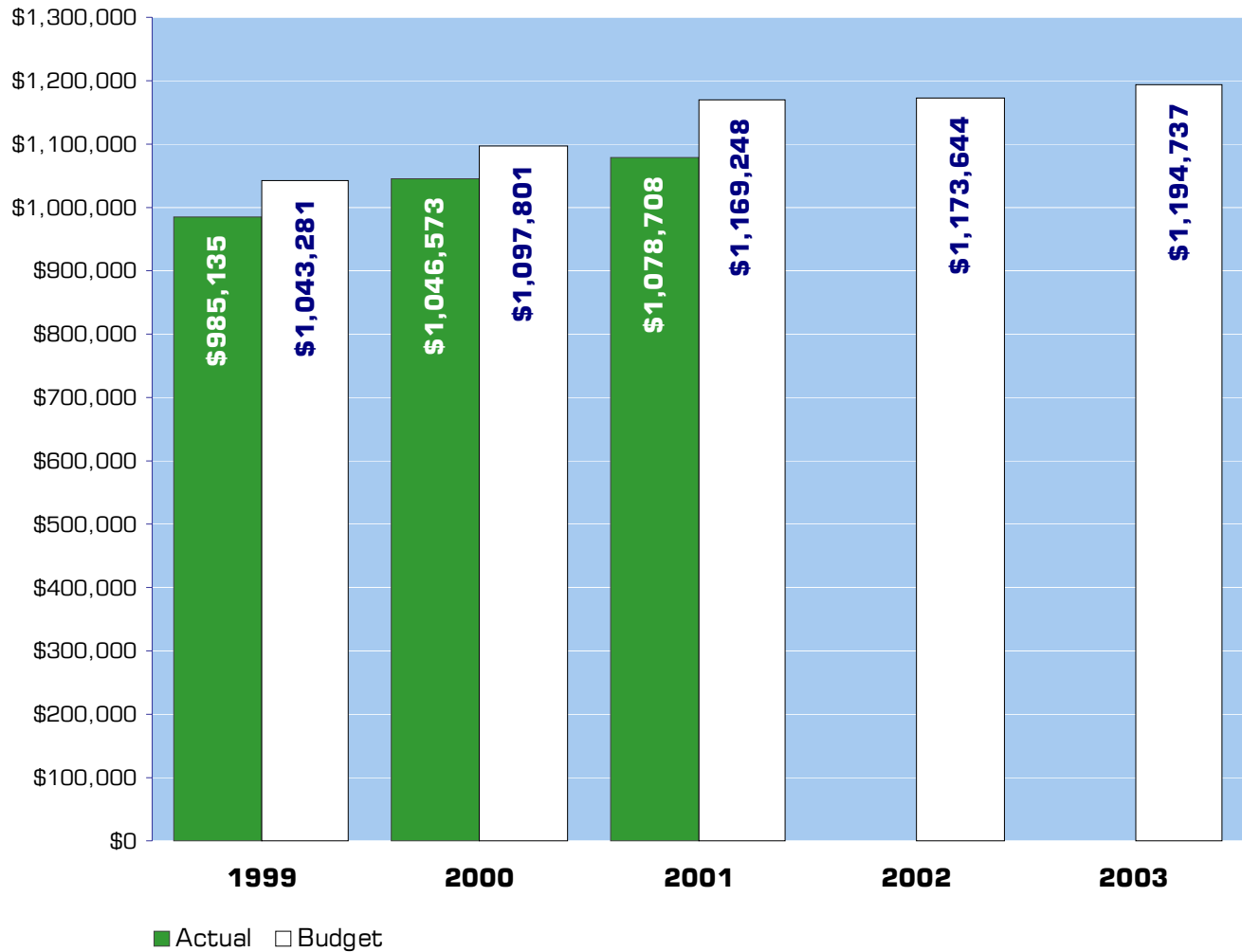
- Provide valuable and timely information to all customers in a courteous and efficient manner. Mail tax statements by February 14th to insure consistent cash flow for the county and other taxing districts and provide all departments and districts with understandable financial reports by the 10th business day each month.

- Convert all payments and deposits to investable funds as quickly as possible. Deposit "material" revenues the same day received and deposit all property tax revenues within five working days of the deadline.
- Maintain property tax revenues at current peak collection rates.
- Conduct and train county cash handlers on a quarterly basis. Train elected officials and department heads regarding the importance of internal controls to protect cash.
- Coordinate "training night" for all district commissioners and pertinent personnel.

Whatcom County Investment

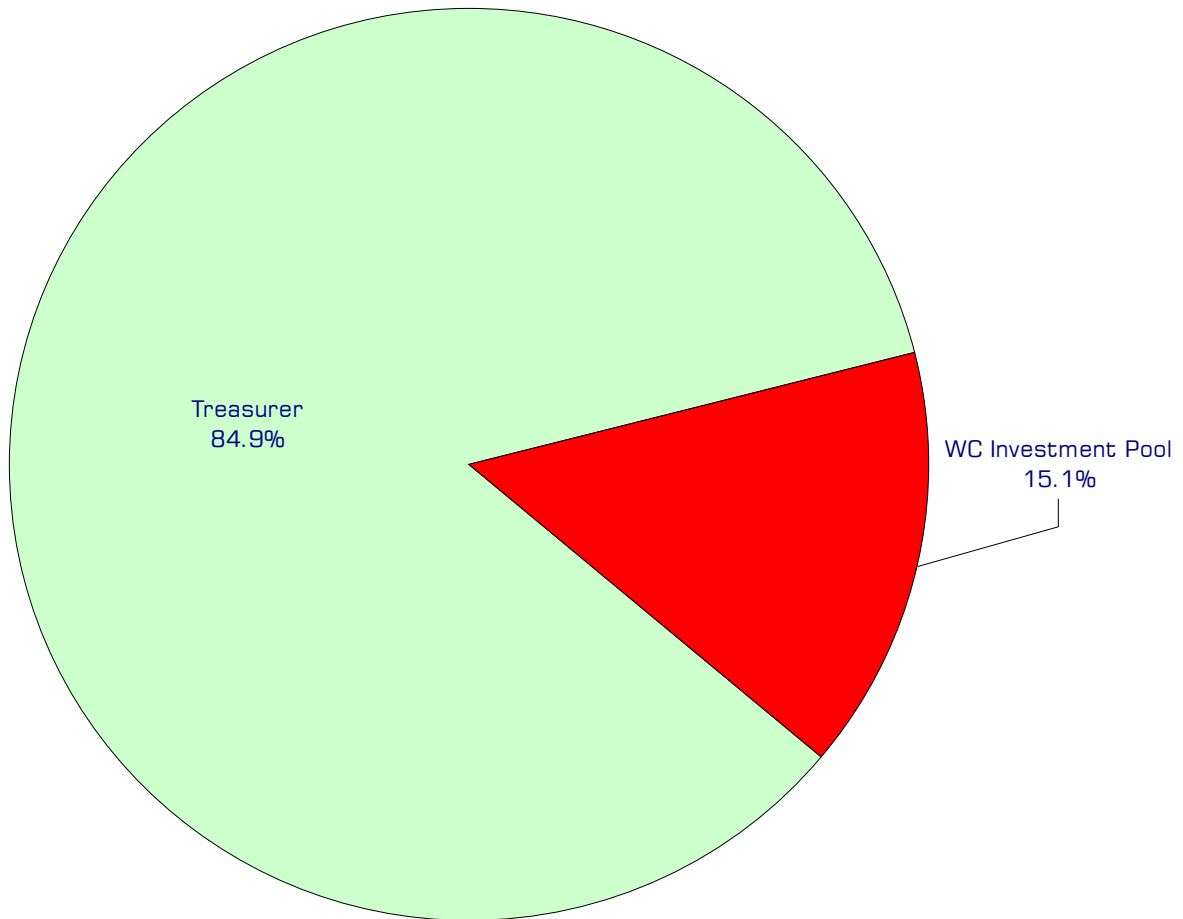
- Achieve an overall rate of return on investments which is higher than the Local Government Investment Pool.
- Fully integrate Gateway Cash Management system.
- Spearhead debt policy development.
- Send quarterly newsletter or create information on county website to keep pool participants informed of pool strategy and performance.

Expenditure Trends



NOTE: Capital expenditures and interfund operating transfers are not shown to more accurately reflect ongoing operational costs.

2003 Budget by Program



NOTE: Capital expenditures and interfund operating and residual equity transfers are not shown to more accurately reflect ongoing operational costs.

Program Summary

| | Actual 1999 | Actual 2000 | Actual 2001 | Budget 2002 | Budget 2003 | \$ Change 2002 to 2003 | % Change 2002 to 2003 |
|-----------------------------------|------------------|------------------|------------------|------------------|------------------|------------------------------|-----------------------------|
| OPERATIONS | | | | | | | |
| General Fund | | | | | | | |
| 3300 Treasurer | 855,417 | 886,827 | 895,088 | 966,290 | 1,013,883 | 47,593 | 4.93% |
| 3310 WC Investment Pool | 129,204 | 135 | - | - | - | - | 0.00% |
| 3320 Treasurer Tax Audit | 514 | - | - | - | - | - | 0.00% |
| WC Investment Pool | - | 159,611 | 183,620 | 207,354 | 180,854 | (26,500) | -12.78% |
| Total Treasurer Operations | 985,135 | 1,046,573 | 1,078,708 | 1,173,644 | 1,194,737 | 21,093 | 1.80% |
| CAPITAL | | | | | | | |
| General Fund | | | | | | | |
| 3300 Treasurer | 69,768 | - | 2,849 | - | - | - | 0.00% |
| Total Treasurer Capital | 69,768 | - | 2,849 | - | - | - | 0.00% |
| TRANSFERS | | | | | | | |
| General Fund | | | | | | | |
| 3300 Treasurer | - | - | 6,501 | - | - | - | 0.00% |
| 402100 WC Investment Pool | - | - | 1,197 | - | - | - | 0.00% |
| Total Treasurer Transfers | - | - | 7,698 | - | - | - | 0.00% |
| TOTAL TREASURER | 1,054,903 | 1,046,573 | 1,089,255 | 1,173,644 | 1,194,737 | 21,093 | 1.80% |

2003 Funding Sources

| | |
|----------------------|------------------|
| Accounting Services | 30,000 |
| General Fund | 918,484 |
| Misc Revenues | 53,000 |
| WC Investment Fees | 193,253 |
| Total Funding | 1,194,737 |

Accounting Services

The Treasurer's Office is reimbursed for collection services it provides to the Flood Control Zone District.

General Fund

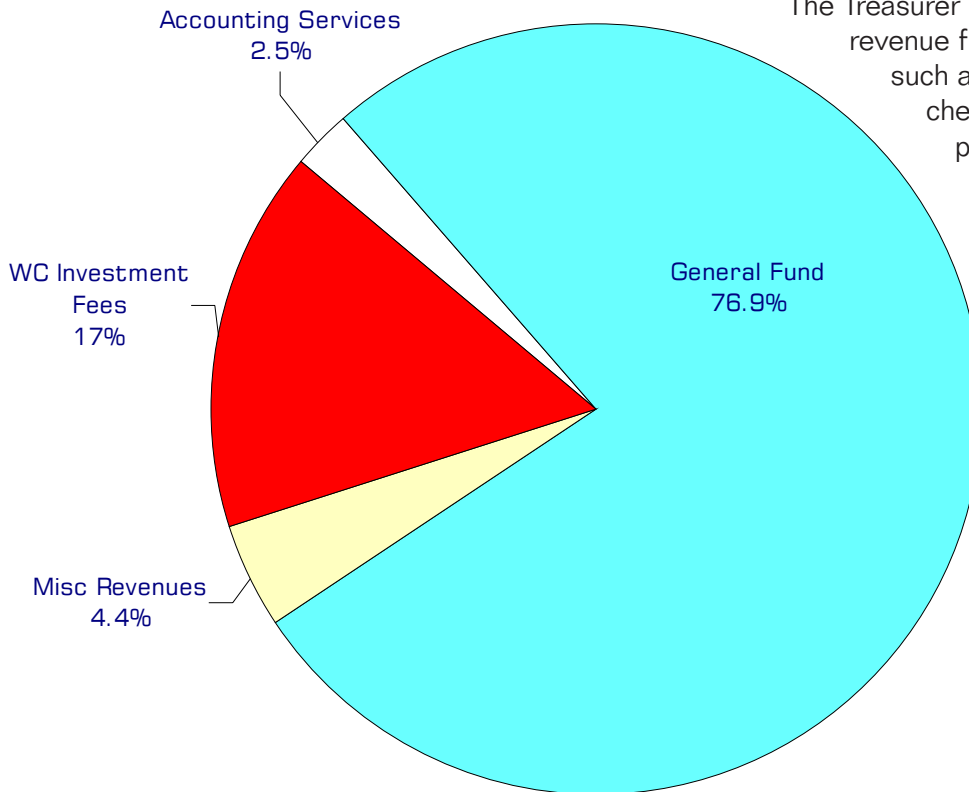
Undedicated General Fund resources.

Miscellaneous Revenue

The Treasurer collects small amounts of revenue from a variety of sources, such as charges on returned checks, tax collection fees, and printing and duplicating charges.

WC Investment Fees

The department collects a fee equal to .12% of the annualized total, calculated on the average daily balance of funds invested in the Whatcom County Investment Pool.



Note: The Treasurer's Office manages the Whatcom County Investment Pool. Investment pool participants include the county and local school districts, ports, fire districts, cemetery districts and water districts. By utilizing the less fluid capital needs of the pool participants, the Treasurer's Office is able to use longer term and less liquid investments which produce higher returns than the State Local Government Investment Pool.

Interest income from the pool's investments are not shown in the department's funding sources graph; however, it is important to acknowledge the Treasurer's Office's performance does impact Whatcom County's investment income. Proceeds generated from investment fees charged for managing the pool are included in the departments funding sources graph.

Performance / Activity Measures

| | Actual 1999 | Actual 2000 | Actual 2001 | Projected 2002 | Projected 2003 |
|--|----------------|----------------|----------------|-------------------|-------------------|
| <i>Treasurer</i> | | | | | |
| Tax Collection Rate | 96.8% | 97.5% | 96.9% | 97.2% | 97.1% |
| Financial Transaction Activity | | \$1.4 billion | \$1.5 billion | \$1.3 billion | \$1.4 billion |
| Alternative payment options used | 119,500 | 138,000 | 125,000 | 140,000 | 145,000 |
| Bonds Issued | 66,514,000 | 13,984,000 | 31,426,000 | 40,000,000 | 25,000,000 |
| Bonds Redeemed | 14,256,000 | 15,245,000 | 12,431,000 | 14,592,000 | 14,537,000 |
| Foreclosure Parcels | 193 | 138 | 341 | 208 | 400 |
| Address Changes | 25,000 | 27,500 | 20,000 | 20,000 | 20,000 |
| Cancellations & Supplementals | 2,200 | 2,100 | 2,700 | 5,000 | 5,000 |
| Miscellaneous Receipts | 6,000 | 6,000 | 8,410 | 10,000 | 11,000 |
| Segregations | 500 | 600 | 583 | 900 | 750 |
| Refunds | 800 | 750 | 1,607 | 1,700 | 1,700 |
| Special Assessment Accounts | 99,276 | 100,359 | 101,968 | 102,730 | 103,500 |
| Excise Documents | 10,000 | 12,000 | 9,992 | 10,000 | 11,000 |
| Tax Accounts | 104,967 | 105,000 | 106,000 | 105,000 | 106,000 |
| Warrants Redeemed | 101,018 | 99,907 | 95,210 | 109,000 | 105,000 |
| <i>Whatcom County Investment Pool</i> | | | | | |
| Annual WCIP activity | n/a | 190,000,000 | 347,000,000 | 200,000,000 | 190,000,000 |
| Investment transactions | | 5,000 | 5,100 | 5,100 | 5,100 |
| Interest rate return difference WCIP vs LGIP | .56% | (.16)% | .95% | 1.60% | .50% |
| Average size of WCIP | 219,000,000 | 194,000,000 | 188,000,000 | 191,000,000 | 188,000,000 |

Expenditures Summary

| | Actual 1999 | Actual 2000 | Actual 2001 | Budget 2002 | Budget 2003 | \$ Change 2002 to 2003 | % Change 2002 to 2003 |
|----------------------------------|----------------|----------------|----------------|----------------|----------------|------------------------------|-----------------------------|
| GENERAL FUND | | | | | | | |
| 3300 Treasurer | | | | | | | |
| Salaries & Wages | 447,146 | 448,478 | 455,943 | 479,155 | 517,571 | 38,416 | 8.02% |
| Benefits | 126,360 | 117,739 | 125,996 | 139,380 | 154,141 | 14,761 | 10.59% |
| Supplies | 18,523 | 16,838 | 21,865 | 21,250 | 16,250 | (5,000) | -23.53% |
| Other Services & Charges | 263,388 | 303,772 | 291,284 | 326,505 | 325,921 | (584) | -0.18% |
| Capital Outlay | 69,768 | - | 2,849 | - | - | - | 0.00% |
| Operating Transfers | - | - | 6,501 | - | - | - | 0.00% |
| <i>Total Treasurer</i> | 925,185 | 886,827 | 904,438 | 966,290 | 1,013,883 | 47,593 | 4.93% |
| 3310 W C Investment Pool | | | | | | | |
| Salaries & Wages | 79,903 | - | - | - | - | - | 0.00% |
| Benefits | 18,806 | 135 | - | - | - | - | 0.00% |
| Supplies | 686 | - | - | - | - | - | 0.00% |
| Other Services & Charges | 29,809 | - | - | - | - | - | 0.00% |
| <i>Total W C Investment Pool</i> | 129,204 | 135 | - | - | - | - | 0.00% |
| 3320 Treasurer Tax Audit | | | | | | | |
| Salaries & Wages | 407 | - | - | - | - | - | 0.00% |
| Benefits | 107 | - | - | - | - | - | 0.00% |
| <i>Total Treasurer Tax Audit</i> | 514 | - | - | - | - | - | 0.00% |
| <i>Total General Fund</i> | 1,054,903 | 886,962 | 904,438 | 966,290 | 1,013,883 | 47,593 | 4.93% |
| WC INVESTMENT POOL | | | | | | | |
| 402100 WC Investment Pool | | | | | | | |
| Salaries & Wages | - | 87,800 | 91,617 | 92,678 | 86,174 | (6,504) | -7.02% |
| Benefits | - | 29,690 | 25,720 | 21,506 | 19,955 | (1,551) | -7.21% |
| Supplies | - | 820 | 877 | 1,400 | 1,400 | - | 0.00% |
| Other Services & Charges | - | 41,301 | 65,406 | 91,770 | 73,325 | (18,445) | -20.10% |
| Operating Transfers | - | - | 1,197 | - | - | - | 0.00% |
| <i>Total WC Investment Pool</i> | - | 159,611 | 184,817 | 207,354 | 180,854 | (26,500) | -12.78% |
| TOTAL TREASURER | 1,054,903 | 1,046,573 | 1,089,255 | 1,173,644 | 1,194,737 | 21,093 | 1.80% |