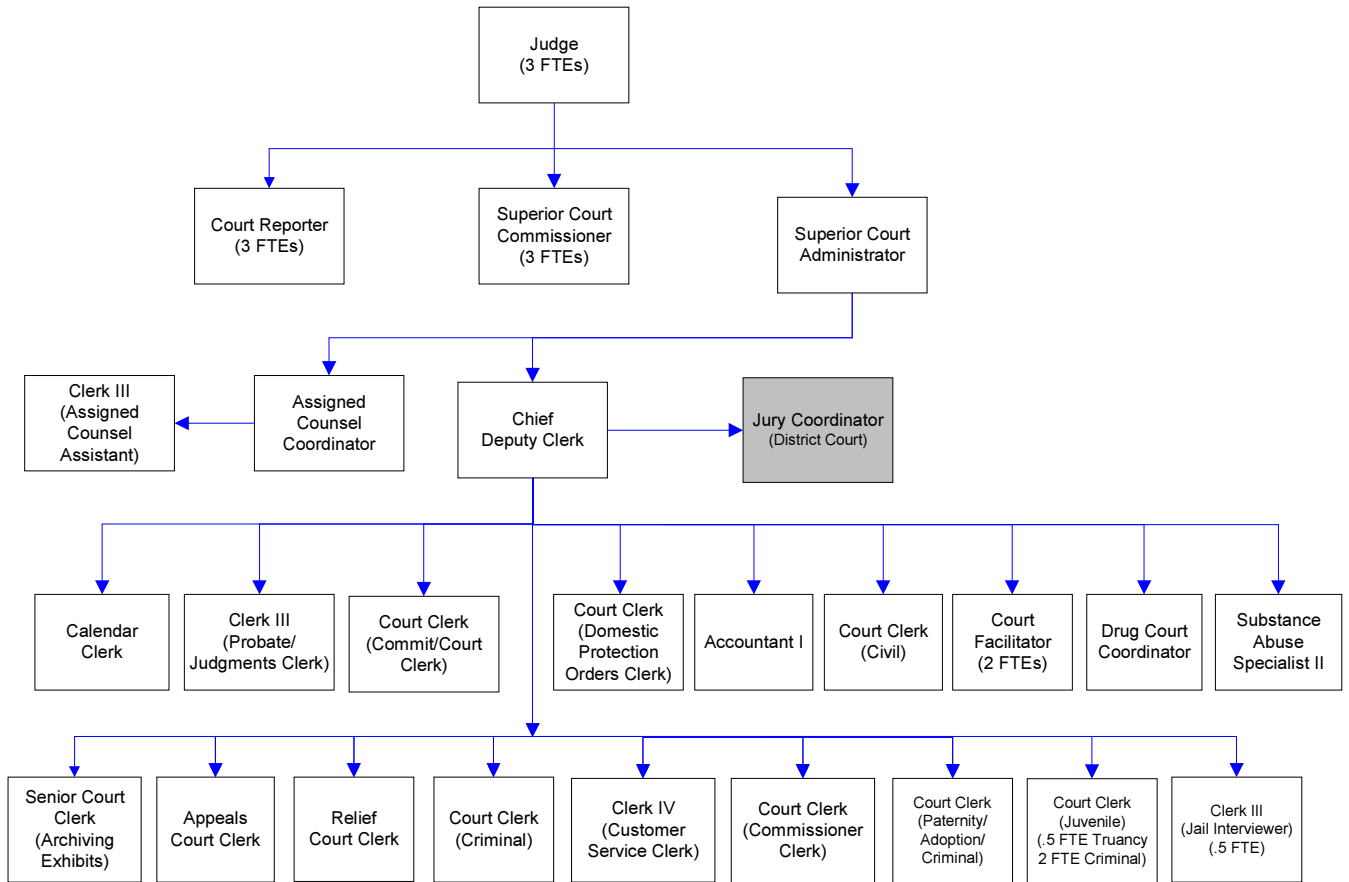


# Superior Court Clerk's Office



## Mission & Objectives

### Mission

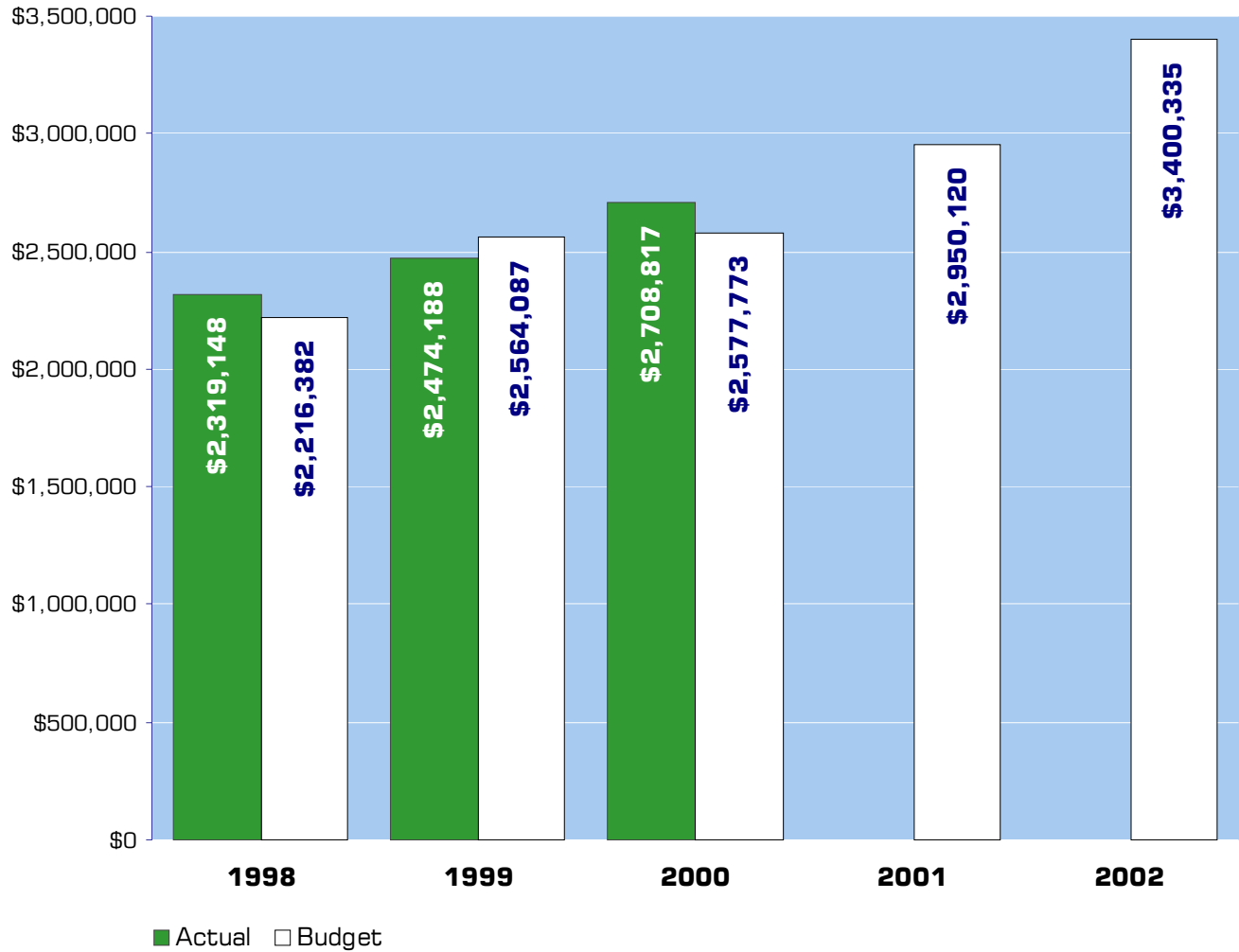
The mission of the Superior Court, Assigned Counsel, County Clerk and Family Court Services is to improve the quality and the perception of the quality of justice in Whatcom County by identifying deficiencies in and implementing measures to improve:

- 1) Access to justice
- 2) Expedition and timeliness
- 3) Equality, fairness and integrity
- 4) Independence and accountability
- 5) Public trust and confidence

### Objectives

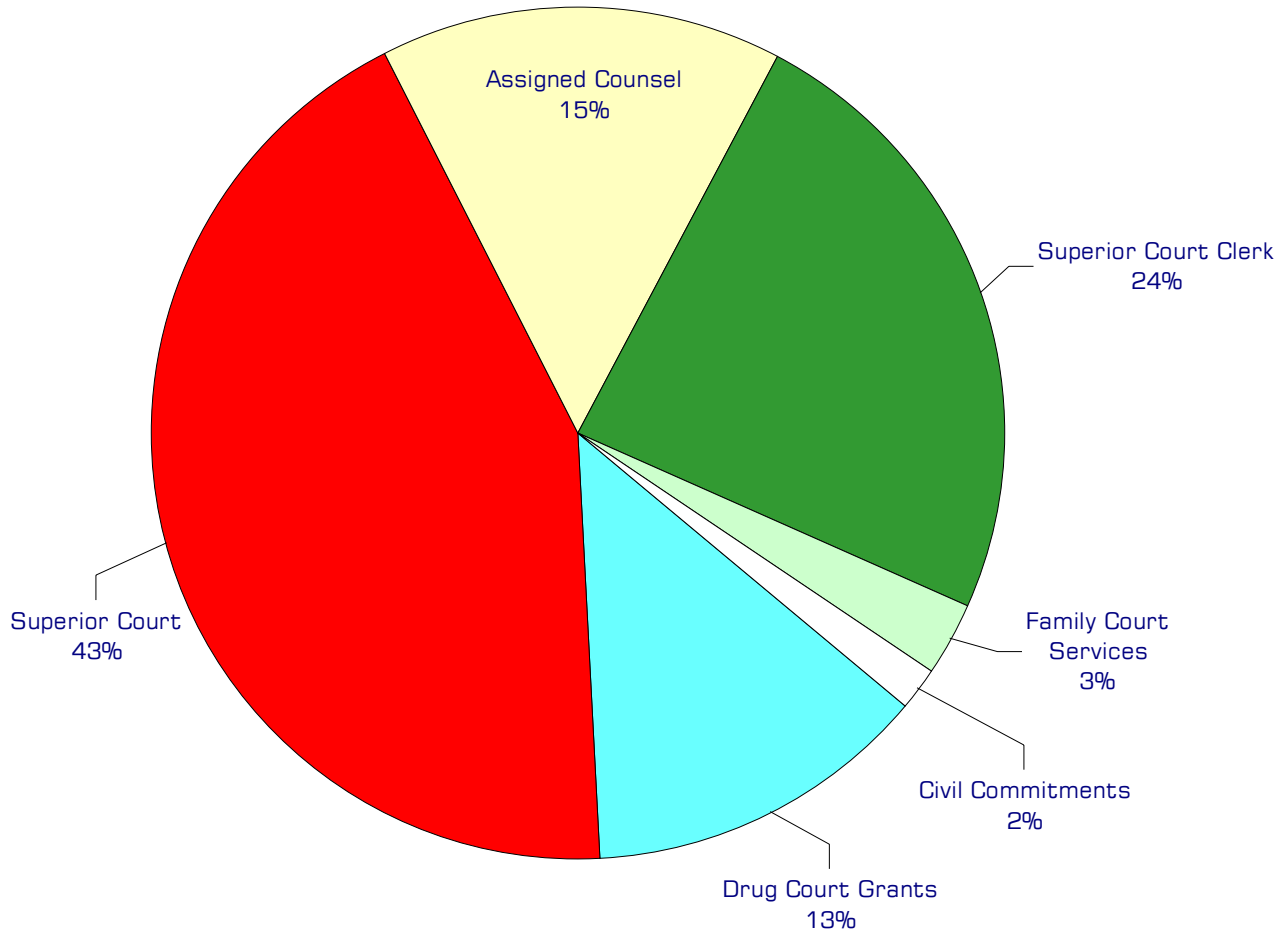
- Research, design and implement “Differentiated Case Management” as recommended by the Law & Justice Report, by categorizing cases at the time of filing, assigning discrete tracks, monitoring and controlling the progress of case from filing to conclusion, to maximize efficiency of judicial resources and provide for expeditious conclusion of non-criminal disputes and speedy justice for those accused of crime and their victims of crime.
- Seek to identify and implement greater assistance to pro se litigants; expand Courthouse Facilitator services, including non-domestic relations assistance.
- Increase client base in Drug Court, adding case management.
- Implement appropriate Specialty Courts; continue assessment/design efforts in collaboration with L&J Council and sister courts & offices.

# Expenditure Trends



*NOTE: Capital expenditures and interfund operating transfers are not shown to more accurately reflect ongoing operational costs.*

# 2002 Budget by Program



NOTE: Capital expenditures and interfund operating and residual equity transfers are not shown to more accurately reflect ongoing operational costs.

# Program Summary

	Actual 1998	Actual 1999	Actual 2000	Budget 2001	Budget 2002	\$ Change 2001 to 2002	% Change 2001 to 2002
<b>OPERATIONS</b>							
<b>General Fund</b>							
3100 Superior Court	1,124,620	1,216,519	1,355,119	1,437,136	1,473,518	36,382	2.53%
3140 Assigned Counsel	488,817	431,800	501,173	473,359	524,487	51,128	10.80%
3150 Superior Court Clerk	663,427	731,639	732,199	793,760	809,662	15,902	2.00%
3160 Family Court Services	42,284	44,533	43,180	71,719	89,986	18,267	25.47%
3170 Drug Courts Grant	-	19,862	1,766	114,146	442,682	328,536	287.82%
3180 Civil Commitments	-	29,835	75,380	60,000	60,000	-	0.00%
<i>Total Superior Court Operations</i>	<i>2,319,148</i>	<i>2,474,188</i>	<i>2,708,817</i>	<i>2,950,120</i>	<i>3,400,335</i>	<i>450,215</i>	<i>15.26%</i>
<b>CAPITAL</b>							
<b>General Fund</b>							
3100 Superior Court	58,452	5,348	-	8,750	-	(8,750)	-100.00%
3160 Family Court Services	-	-	-	5,000	-	(5,000)	-100.00%
3170 Drug Courts Grant	-	2,247	-	7,000	3,000	(4,000)	-57.14%
<i>Total Superior Court Capital</i>	<i>58,452</i>	<i>7,595</i>	<i>-</i>	<i>20,750</i>	<i>3,000</i>	<i>(17,750)</i>	<i>-85.54%</i>
<b>TRANSFERS</b>							
<b>General Fund</b>							
3160 Family Court Services	-	-	-	22,408	-	(22,408)	-100.00%
<i>Total Superior Court Transfers</i>	<i>-</i>	<i>-</i>	<i>-</i>	<i>22,408</i>	<i>-</i>	<i>(22,408)</i>	<i>-100.00%</i>
<b>TOTAL SUPERIOR COURT</b>	<b>2,377,600</b>	<b>2,481,783</b>	<b>2,708,817</b>	<b>2,993,278</b>	<b>3,403,335</b>	<b>410,057</b>	<b>13.70%</b>

## 2002 Funding Sources

Intergovt'l Revenues	593,446
Charges for Services	217,400
Other	32,000
General Fund	2,504,467
Operating Trans - Drug Fund	53,022
<b>Total Funding</b>	<b>3,400,335</b>

### Intergovernmental Revenue

The court receives reimbursement from the state for county-paid criminal witness fees in cases where the defendant is found guilty and for county employee salaries, benefits and administrative costs associated with court proceedings relating to the recovery and enforcement of child support. Also money received from the state based on the Becca Bill funding model.

### Charges for Services

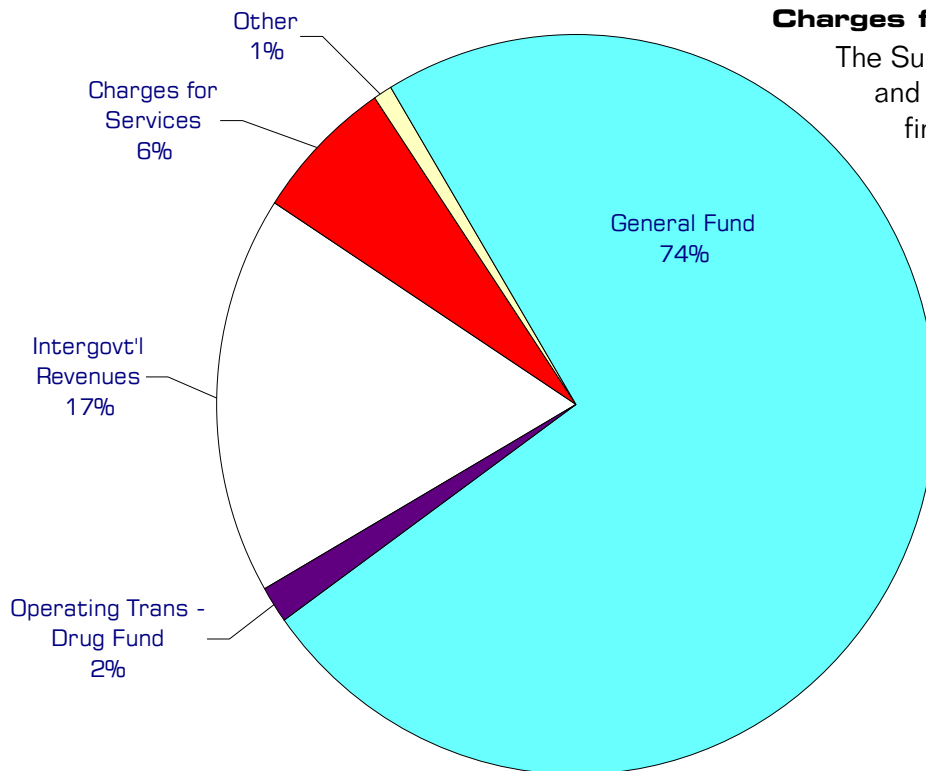
The Superior Court charges for filings and various other services. Judicial fines and forfeits are not included as Superior Court revenue.

### Other

The Superior Court collects a surcharge on marriage licenses, as well as revenue from other miscellaneous sources.

### General Fund

Undedicated General Fund resources.



# Performance / Activity Measures

	Actual 1998	Actual 1999	Actual 2000	Projected 2001	Projected 2002
<b>Superior Court</b>					
% of courtroom work civil	56%	56%	56%	56%	Unavailable
% of courtroom work domestic	10%	10%	10%	10%	Unavailable
% of courtroom work criminal	34%	34%	34%	34%	Unavailable
Hearings/trials per year	20,717	17,924	19,648	19,136	19,500
Time to trial once ready, civil	9-12 months	9-12 months	9-12 months	6-12 months	6-12 months
Facilitator contacts	Unavailable	Unavailable	Unavailable	Unavailable	Unavailable
Microfilm backlog (pages)	55,000	-	-	-	-
Sick leave/FMLA hours taken	2,111	1,060	2,375	1,922	1,100
Pages in microfilm inventory	7,557,000	8,507,400	9,589,300	10,500,000	10,900,000
Cases filed	10,546	9,595	9,414	9,800	9,800
Documents filed	179,880	176,066	182,036	180,414	181,200
Computer records entered	1,036,992	1,268,040	1,304,208	1,396,860	1,480,000
Arbitrations filed	61	73	61	68	66
District Court AH & DV petitions filed	316	427	426	516	550
Superior Court AH & DV petitions filed	299	234	234	272	300
Assigned Counsel/contacts in jail	3,296	3,746	3,851	3,804	3,800
Assigned Counsel/applications denied	595	766	792	932	950
Assigned Counsel/cases conflicted out	346	398	481	436	450
JIS DV data entry (new cases/not TRO's)	299	627	614	700	750
Domestic mandatory mediations heard	N/A	126	78	102	140
Domestic settlement conferences heard	N/A	33	67	70	100
Dependency cases filed		253	333	460	500
Domestic trials		93	142	158	176
Restitution received/forwarded to crime victims				Unavailable	Unavailable
Files checked out/in		26,437	65,308	63,124	64,200
Hearings/Trials Continued (Criminal)		921	1,082	1,238	1,400
Clerk Labor for Hrgs/Trials Cont'd @ 10 min. ea. (Criminal)		3.85 wks	4.5 wks	5.15 wks	5.83 wks
Hearings/Trials Continued (Juvenile)		782	572	480	450
Clerk Labor for Hrgs/Trials Cont'd @ 10 min. ea. (Juvenile)		3.25 wks	2.38 wks	2 wks	1.88 wks

# Expenditures Summary

	Actual 1998	Actual 1999	Actual 2000	Budget 2001	Budget 2002	\$ Change 2001 to 2002	% Change 2001 to 2002
<b>GENERAL FUND</b>							
3100 Superior Court							
Salaries & Wages	601,681	689,348	753,275	760,995	800,473	39,478	5.19%
Benefits	110,558	124,092	121,806	140,852	131,001	(9,851)	-6.99%
Supplies	9,228	9,001	5,410	6,530	6,530	-	0.00%
Other Services & Charges	403,153	394,078	474,628	528,759	535,514	6,755	1.28%
Capital Outlay	58,452	5,348	-	8,750	-	(8,750)	-100.00%
<i>Total Superior Court</i>	1,183,072	1,221,867	1,355,119	1,445,886	1,473,518	27,632	1.91%
3140 Assigned Counsel							
Salaries & Wages	69,148	76,742	87,313	84,204	84,838	634	0.75%
Benefits	19,509	21,319	24,117	25,821	28,399	2,578	9.98%
Supplies	-	-	1,209	1,500	1,500	-	0.00%
Other Services & Charges	400,160	333,739	388,534	361,834	409,750	47,916	13.24%
<i>Total Assigned Counsel</i>	488,817	431,800	501,173	473,359	524,487	51,128	10.80%
3150 Superior Court Clerk							
Salaries & Wages	428,134	492,952	501,457	529,680	541,533	11,853	2.24%
Benefits	124,202	147,308	142,146	164,507	162,187	(2,320)	-1.41%
Supplies	42,914	22,257	20,097	22,500	24,000	1,500	6.67%
Other Services & Charges	68,177	69,122	68,499	77,073	81,942	4,869	6.32%
<i>Total Superior Court Clerk</i>	663,427	731,639	732,199	793,760	809,662	15,902	2.00%
3160 Family Court Services							
Salaries & Wages	32,792	34,119	33,809	54,807	70,092	15,285	27.89%
Benefits	9,369	10,033	9,371	16,912	19,894	2,982	17.63%
Other Services & Charges	123	381	-	-	-	-	0.00%
Capital Outlay	-	-	-	5,000	-	(5,000)	-100.00%
Operating Transfers	-	-	-	22,408	-	(22,408)	-100.00%
<i>Total Family Court Svcs</i>	42,284	44,533	43,180	99,127	89,986	(9,141)	-9.22%
3170 Drug Courts Grant							
Salaries & Wages	-	-	-	82,000	127,292	45,292	55.23%
Benefits	-	-	27	21,146	34,384	13,238	62.60%
Supplies	-	-	284	2,000	7,722	5,722	286.10%
Other Services & Charges	-	19,862	1,455	9,000	273,284	264,284	2936.49%
Capital Outlay	-	2,247	-	7,000	3,000	(4,000)	-57.14%
<i>Total Drug Courts Grant</i>	-	22,109	1,766	121,146	445,682	324,536	267.89%
3180 Civil Commitments							
Other Services & Charges	-	29,835	75,380	60,000	60,000	-	0.00%
<i>Total Drug Courts Grant</i>	-	29,835	75,380	60,000	60,000	-	0.00%
<b>TOTAL SUPERIOR COURT</b>	2,377,600	2,481,783	2,708,817	2,993,278	3,403,335	410,057	13.70%