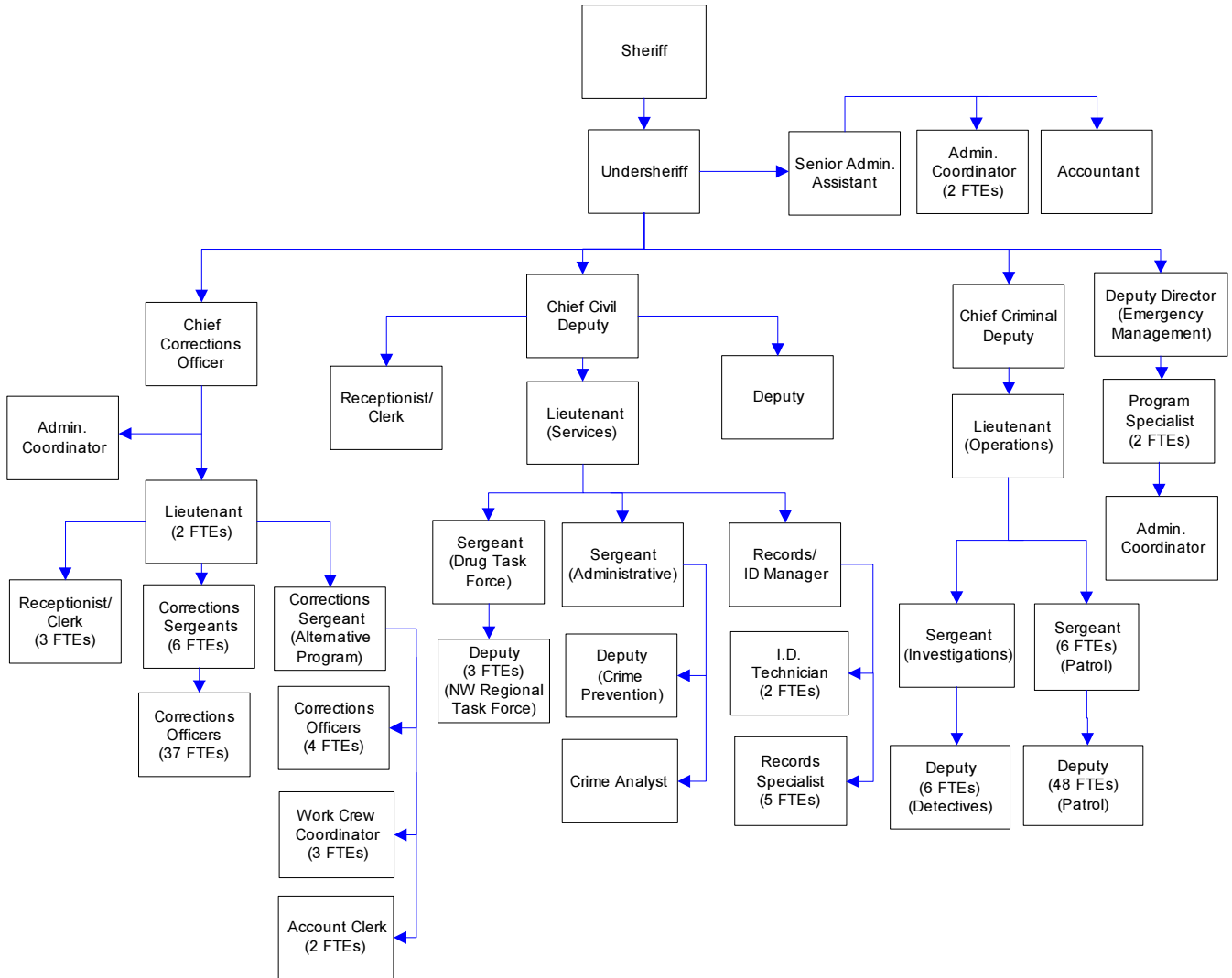


County Sheriff's Office



Mission & Objectives

Mission

Sheriff

The mission of the Whatcom County Sheriff's Office is to provide citizens of and visitors to Whatcom County the effective, efficient delivery of law enforcement, corrections, and emergency management services of the highest quality allowed within resources entrusted to us by the community. All members of the WCSO shall judiciously seek, acquire and use such resources to achieve our mission in a competent, consistent, ethical and professional manner.

Emergency Management

Develop and maintain a community infrastructure for emergency/disaster mitigation, planning, response and recovery, through public education, training, planning and team building, response and recovery, through public education, training, plan development and in building teams of responders.

Objectives

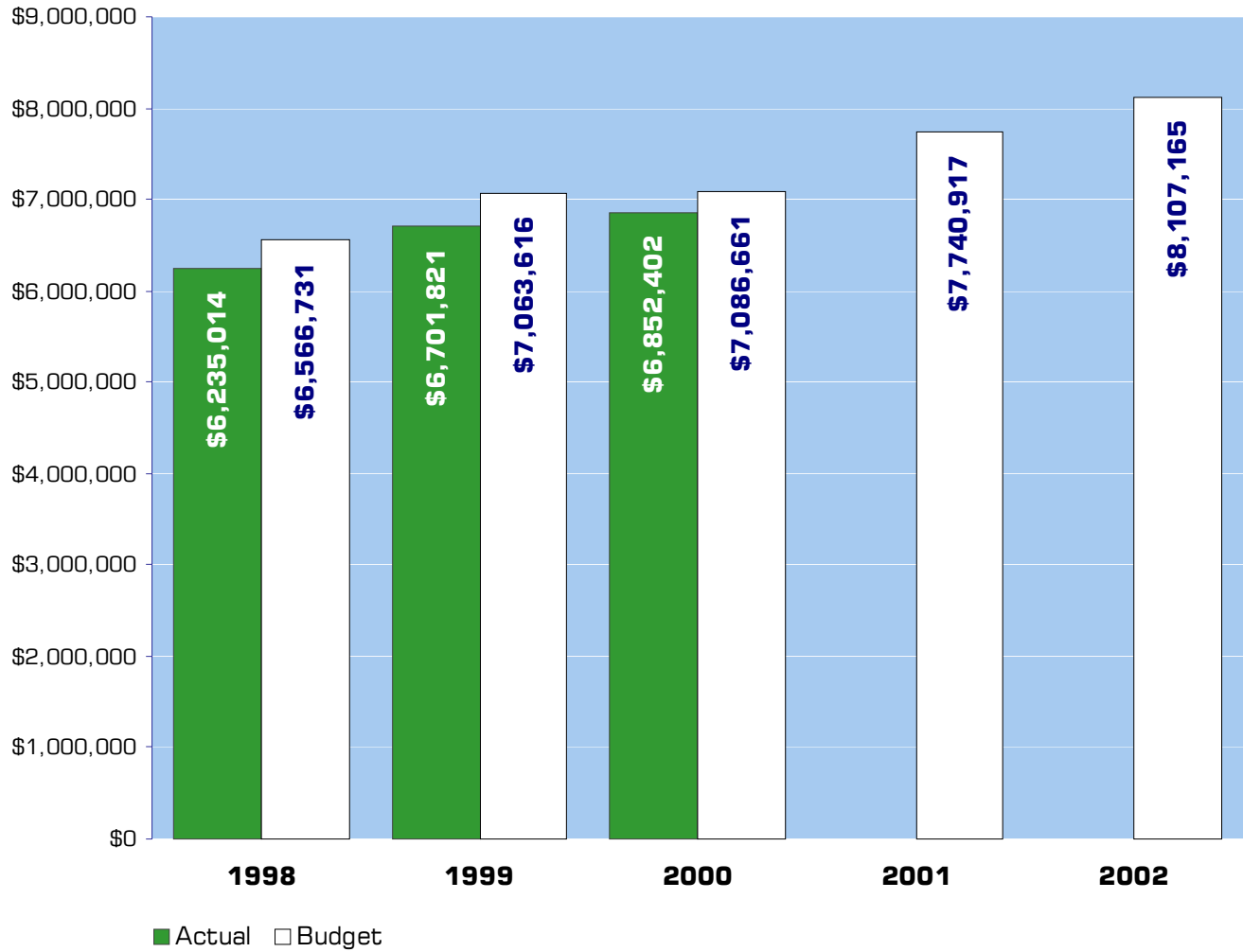
Administration

- Reduce response times to emergency calls and improve the ability to provide for quick and certain back up to officers engaged in dangerous situations.
- Improve the capability of the Sheriff's Office to investigate crimes of violence and property crimes. This ability has decreased dramatically in the past few years due to increased calls for service and additional mandated responsibilities without a corresponding increase in personnel.
- Pursue funding to ensure effective delivery of emergency law enforcement and public safety services to the citizens of Whatcom County.

Emergency Management

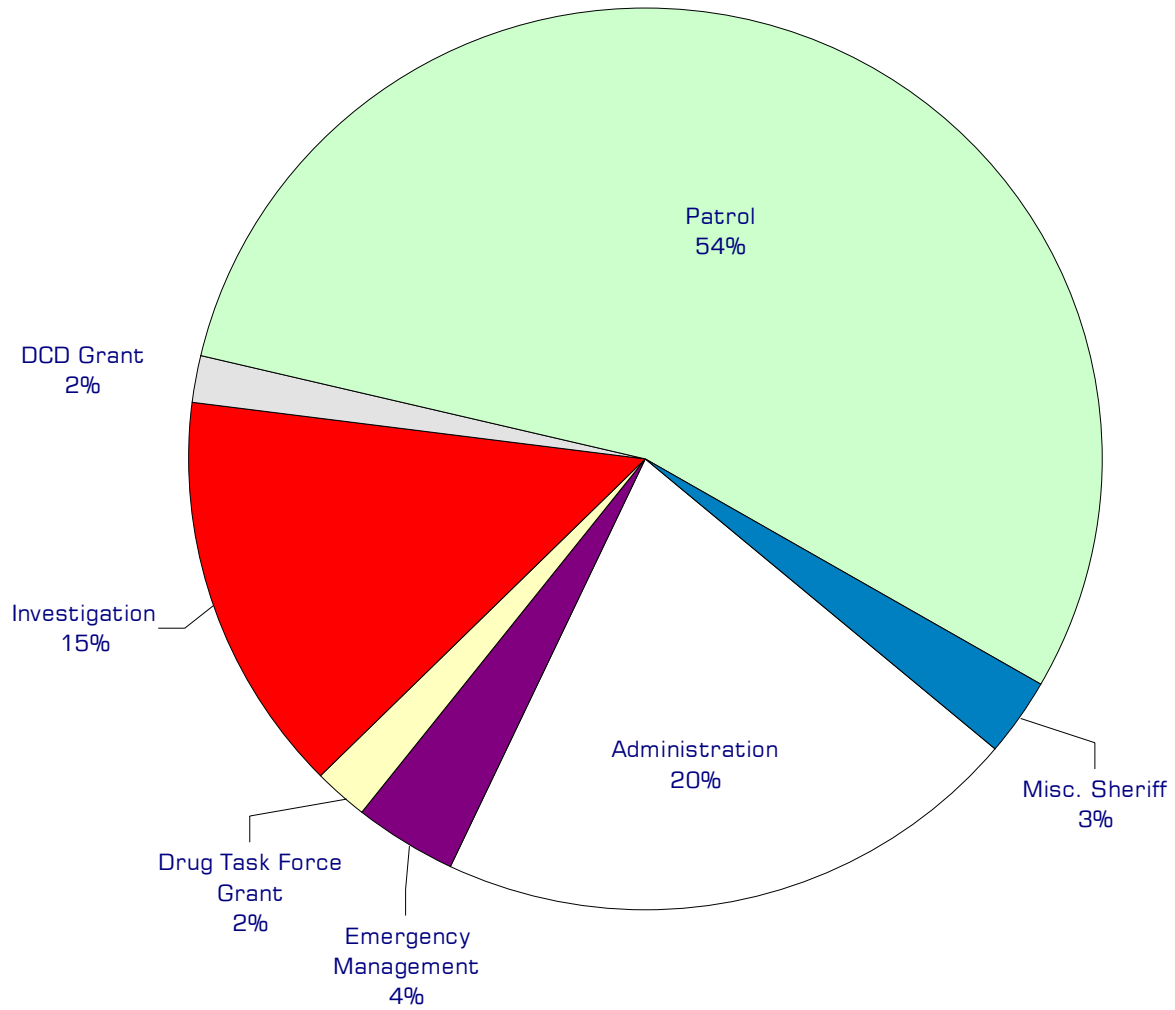
- Effectively respond to multi-jurisdictional/ multi-agency incidents.
- Continue to act as lead agency of the countwide emergency communication study.
- Work with all Emergency Management Council jurisdictions to implement and exercise their emergency plans.
- Evaluate the effectiveness of the revised Comprehensive Emergency Management Plan (CEMP) through a designed exercise or an EOC activation.
- Complete the Hazard Identification Vulnerability Analysis for Whatcom County.
- Continue to coordinate the Community Emergency Response Team (CERT) program.

Expenditure Trends



NOTE: Capital expenditures and interfund operating transfers are not shown to more accurately reflect ongoing operational costs.

2002 Budget by Program



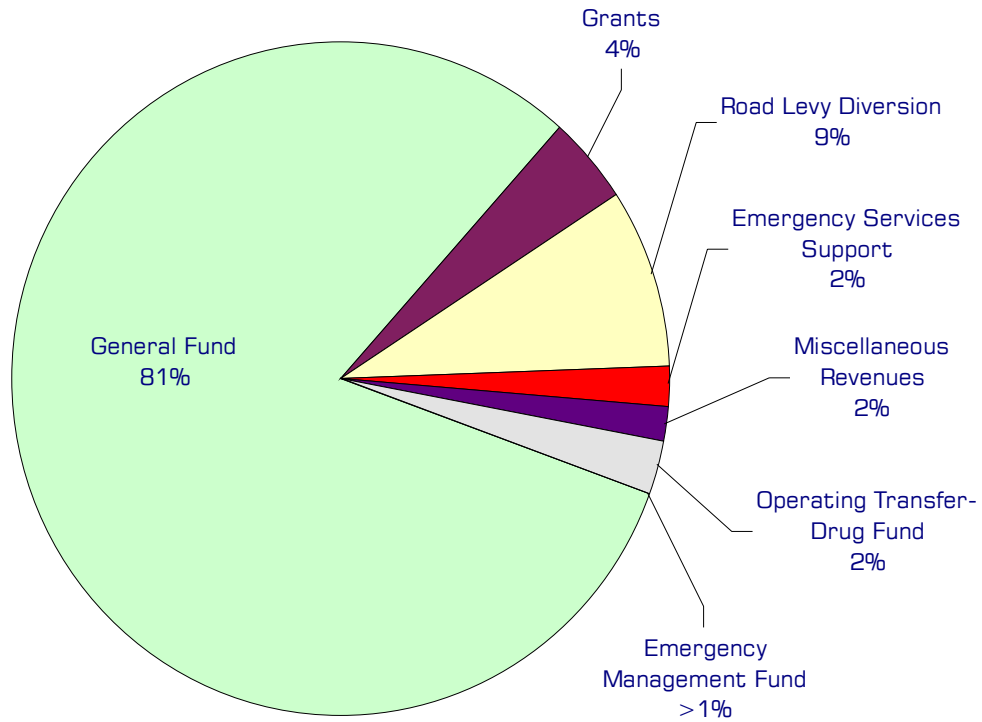
NOTE: Capital expenditures and interfund operating and residual equity transfers are not shown to more accurately reflect ongoing operational costs.

Program Summary

	Actual 1998	Actual 1999	Actual 2000	Budget 2001	Budget 2002	\$ Change 2001 to 2002	% Change 2001 to 2002
OPERATIONS							
General Fund							
2900 Sheriff Administration	1,375,273	1,418,861	1,464,081	1,603,919	1,686,092	82,173	5.12%
2910 Investigations	904,574	969,714	1,040,277	1,157,452	1,178,062	20,610	1.78%
2920 Patrol	3,388,120	3,630,489	3,661,770	4,130,729	4,441,217	310,488	7.52%
2930 Special Units	72,810	75,284	73,552	77,958	79,711	1,753	2.25%
2940 Training	25,667	32,873	32,355	38,305	51,955	13,650	35.64%
2960 Boating Safety Program	8,989	14,903	15,513	30,250	38,000	7,750	25.62%
2970 Drug Task Force Grant	136,623	150,037	117,410	136,994	137,807	813	0.59%
2980 DCD Grant- Border	111,200	118,211	119,663	124,615	129,807	5,192	4.17%
2990 Sheriff - HIDTA Grant	1,628	67,707	56,192	68,950	60,130	(8,820)	-12.79%
167 Emergency Management	210,130	223,742	271,589	371,745	304,384	(67,361)	-18.12%
<i>Total Sheriff Operations</i>	<i>6,235,014</i>	<i>6,701,821</i>	<i>6,852,402</i>	<i>7,740,917</i>	<i>8,107,165</i>	<i>366,248</i>	<i>4.73%</i>
CAPITAL							
General Fund							
2900 Sheriff Administration	84,019	-	13,002	38,737	3,500	(35,237)	-90.96%
2910 Investigations	7,002	2,161	4,381	7,000	17,500	10,500	150.00%
2920 Patrol	5,112	26,225	24,286	183,500	106,000	(77,500)	-42.23%
2940 Training	-	-	-	-	3,500	3,500	0.00%
2960 Boating Safety Program	-	1,473	1,434	28,750	-	(28,750)	-100.00%
2990 Sheriff - HIDTA Grant	20,439	109,794	118,896	33,000	29,000	(4,000)	-12.12%
167 Emergency Management	30,296	14,848	5,025	5,000	-	(5,000)	-100.00%
<i>Total Sheriff Capital</i>	<i>146,868</i>	<i>154,501</i>	<i>167,024</i>	<i>295,987</i>	<i>159,500</i>	<i>(136,487)</i>	<i>-46.11%</i>
TRANSFERS							
General Fund							
2900 Sheriff Administration	25,360	73,985	-	-	-	-	0.00%
2920 Patrol	88,618	49,838	13,112	10,510	-	(10,510)	-100.00%
2940 Training	-	-	-	-	10,878	10,878	0.00%
2960 Boating Safety Programs	91,500	875	-	-	-	-	0.00%
2990 Sheriff - HIDTA Grant	-	79,713	-	-	-	-	0.00%
<i>Total Sheriff Transfers</i>	<i>205,478</i>	<i>204,411</i>	<i>13,112</i>	<i>10,510</i>	<i>10,878</i>	<i>368</i>	<i>3.50%</i>
TOTAL SHERIFF	6,587,360	7,060,733	7,032,538	8,047,414	8,277,543	230,129	2.86%

2002 Funding Sources

General Fund	6,586,610
Grants	319,351
Road Levy Diversion	706,530
Emergency Services Support	147,972
Miscellaneous Revenues	143,030
Operating Transfer-Drug Fund	197,300
Emergency Management Fund	6,372
Total Funding	8,107,165



Funding Sources continued

General Fund

Undedicated General Fund resources.

Grants

The Sheriff's Department receives various federal and state grants for specific operations it performs. The federal government provides \$60,000 for a deputy to patrol the National Forest in Whatcom County. The department receives \$107,760 as part of the state's Multi-Jurisdictional Narcotics Task Force Grant. The Sheriff also receives revenue of \$15,209 from the State Border Town Grant.

Road Levy Diversion

A direct diversion of part of the Road Fund's property tax revenues is used to fund four Sheriff's Department deputies for traffic related work.

Emergency Services Support

The incorporated cities of Whatcom County and the Port of Bellingham contribute revenue to partially fund the the Sheriff's Emergency Management operations.

Operating Transfer In from Drug Fund

To fund drug task force operations.

Miscellaneous Revenue

Collection of fees, reimbursements and other small amounts of revenue, including an entitlement of \$59,000 received from Washington State boating program to help with boating safety.

Fund Balance - Emergency Management Fund

The 2002 budget provides for spending down \$6,372 of Emergency Management's unreserved fund balance.

Performance / Activity Measures

Actual 1998	Actual 1999	Actual 2000	Projected 2001	Projected 2002
----------------	----------------	----------------	-------------------	-------------------

Sheriff					
Emergency Management					
Weather bulletins issued	36	29	6	20	25
On-scene responses and/or EOC activations	33	41	23	25	25
Logged incidents	117	127	102	100	100
CERT Students Enrolled in Classes	0	71	67	50	100

Expenditures Summary

	Actual 1998	Actual 1999	Actual 2000	Budget 2001	Budget 2002	\$ Change 2001 to 2002	% Change 2001 to 2002
GENERAL FUND							
2900 Administration							
Salaries & Wages	513,003	528,194	566,661	623,530	646,371	22,841	3.66%
Benefits	183,278	183,623	180,697	208,984	256,038	47,054	22.52%
Supplies	81,803	88,939	102,088	117,475	82,174	(35,301)	-30.05%
Other Services & Charges	597,189	618,105	614,635	653,930	701,509	47,579	7.28%
Capital Outlay	84,019	-	13,002	38,737	3,500	(35,237)	-90.96%
Operating Transfers	25,360	73,985	-	-	-	-	0.00%
<i>Total Administration</i>	<i>1,484,652</i>	<i>1,492,846</i>	<i>1,477,083</i>	<i>1,642,656</i>	<i>1,689,592</i>	<i>46,936</i>	<i>2.86%</i>
2910 Investigations							
Salaries & Wages	660,032	731,286	778,377	828,063	837,693	9,630	1.16%
Benefits	173,470	185,633	195,299	223,989	235,929	11,940	5.33%
Supplies	-	-	-	1,000	2,000	1,000	100.00%
Other Services & Charges	71,072	52,795	66,601	104,400	102,440	(1,960)	-1.88%
Capital Outlay	7,002	2,161	4,381	7,000	17,500	10,500	150.00%
<i>Total Investigations</i>	<i>911,576</i>	<i>971,875</i>	<i>1,044,658</i>	<i>1,164,452</i>	<i>1,195,562</i>	<i>31,110</i>	<i>2.67%</i>
2920 Patrol							
Salaries & Wages	2,236,325	2,445,375	2,483,507	2,746,663	2,858,882	112,219	4.09%
Benefits	593,562	611,014	621,404	760,593	829,120	68,527	9.01%
Supplies	5,769	4,976	6,198	20,123	37,775	17,652	87.72%
Other Services & Charges	552,464	569,124	550,661	603,350	715,440	112,090	18.58%
Capital Outlay	5,112	26,225	24,286	183,500	106,000	(77,500)	-42.23%
Operating Transfers	9,070	9,524	10,000	10,510	-	(10,510)	-100.00%
Residual Equity Transfers	79,548	40,314	3,112	-	-	-	0.00%
<i>Total Patrol</i>	<i>3,481,850</i>	<i>3,706,552</i>	<i>3,699,168</i>	<i>4,324,739</i>	<i>4,547,217</i>	<i>222,478</i>	<i>5.14%</i>
2930 Special Units							
Salaries & Wages	50,746	53,031	51,550	54,924	55,044	120	0.22%
Benefits	13,064	13,253	13,002	14,634	15,427	793	5.42%
Other Services & Charges	9,000	9,000	9,000	8,400	9,240	840	10.00%
<i>Total Special Units</i>	<i>72,810</i>	<i>75,284</i>	<i>73,552</i>	<i>77,958</i>	<i>79,711</i>	<i>1,753</i>	<i>2.25%</i>
2940 Training							
Supplies	-	-	-	-	11,650	11,650	0.00%
Other Services & Charges	25,667	32,873	32,355	38,305	40,305	2,000	5.22%
Capital Outlay	-	-	-	-	3,500	3,500	0.00%
Operating Transfers	-	-	-	-	10,878	10,878	0.00%
<i>Total Training</i>	<i>25,667</i>	<i>32,873</i>	<i>32,355</i>	<i>38,305</i>	<i>66,333</i>	<i>28,028</i>	<i>73.17%</i>

continued on next page

Expenditures Summary continued

	Actual 1998	Actual 1999	Actual 2000	Budget 2001	Budget 2002	\$ Change 2001 to 2002	% Change 2001 to 2002
2960 Boating Safety Program							
Supplies	5,995	9,132	8,949	10,250	16,000	5,750	56.10%
Other Services & Charges	2,994	5,771	6,564	20,000	22,000	2,000	10.00%
Capital Outlay	-	1,473	1,434	28,750	-	(28,750)	-100.00%
Operating Transfers	91,500	875	-	-	-	-	0.00%
<i>Total Boating Safety Prog.</i>	<i>100,489</i>	<i>17,251</i>	<i>16,947</i>	<i>59,000</i>	<i>38,000</i>	<i>(21,000)</i>	<i>-35.59%</i>
2970 DTF Grant							
Salaries & Wages	57,049	58,774	53,763	56,024	56,084	60	0.11%
Benefits	14,184	14,047	13,990	14,758	15,511	753	5.10%
Supplies	1,462	2,893	1,720	2,168	2,168	-	0.00%
Other Services & Charges	63,928	74,323	47,937	64,044	64,044	-	0.00%
<i>Total DTF Grant</i>	<i>136,623</i>	<i>150,037</i>	<i>117,410</i>	<i>136,994</i>	<i>137,807</i>	<i>813</i>	<i>0.59%</i>
2980 DCD Grant - Border							
Salaries & Wages	87,721	93,310	94,574	97,197	100,183	2,986	3.07%
Benefits	23,479	24,901	25,089	27,418	29,624	2,206	8.05%
<i>Total DCD Grant - Border</i>	<i>111,200</i>	<i>118,211</i>	<i>119,663</i>	<i>124,615</i>	<i>129,807</i>	<i>5,192</i>	<i>4.17%</i>
2990 Sheriff - HIDTA Grant							
Supplies	590	44,284	19,580	22,800	5,160	(17,640)	-77.37%
Other Services & Charges	1,038	23,423	36,612	46,150	54,970	8,820	19.11%
Capital Outlay	20,439	109,794	118,896	33,000	29,000	(4,000)	-12.12%
Operating Transfer	-	79,713	-	-	-	-	0.00%
<i>Total Sheriff - HIDTA Grant</i>	<i>22,067</i>	<i>257,214</i>	<i>175,088</i>	<i>101,950</i>	<i>89,130</i>	<i>(12,820)</i>	<i>-12.57%</i>
<i>Total General Fund</i>	<i>6,346,934</i>	<i>6,822,143</i>	<i>6,755,924</i>	<i>7,670,669</i>	<i>7,973,159</i>	<i>302,490</i>	<i>3.94%</i>
167 EMERGENCY MANAGEMENT FUND							
16700 Emergency Management							
Salaries & Wages	116,549	125,654	126,541	172,312	174,752	2,440	1.42%
Benefits	33,148	34,143	31,991	47,354	49,105	1,751	3.70%
Supplies	6,326	4,009	4,358	12,440	7,440	(5,000)	-40.19%
Other Services & Charges	54,107	59,936	108,699	134,639	68,087	(66,552)	-49.43%
Capital Outlay	30,296	14,848	5,025	5,000	-	(5,000)	-100.00%
<i>Total Emergency Mgmt</i>	<i>240,426</i>	<i>238,590</i>	<i>276,614</i>	<i>371,745</i>	<i>299,384</i>	<i>(72,361)</i>	<i>-19.47%</i>
16720 CERT Program							
Supplies	-	-	-	5,000	5,000	-	0.00%
<i>Total CERT Program</i>	<i>-</i>	<i>-</i>	<i>-</i>	<i>5,000</i>	<i>5,000</i>	<i>-</i>	<i>0.00%</i>
<i>Total Emergency Management</i>	<i>240,426</i>	<i>238,590</i>	<i>276,614</i>	<i>376,745</i>	<i>304,384</i>	<i>(72,361)</i>	<i>-19.21%</i>
TOTAL SHERIFF	6,587,360	7,060,733	7,032,538	8,047,414	8,277,543	230,129	2.86%

County Sheriff - Jail

See the County Sheriff organizational chart.

Mission & Objectives

Mission

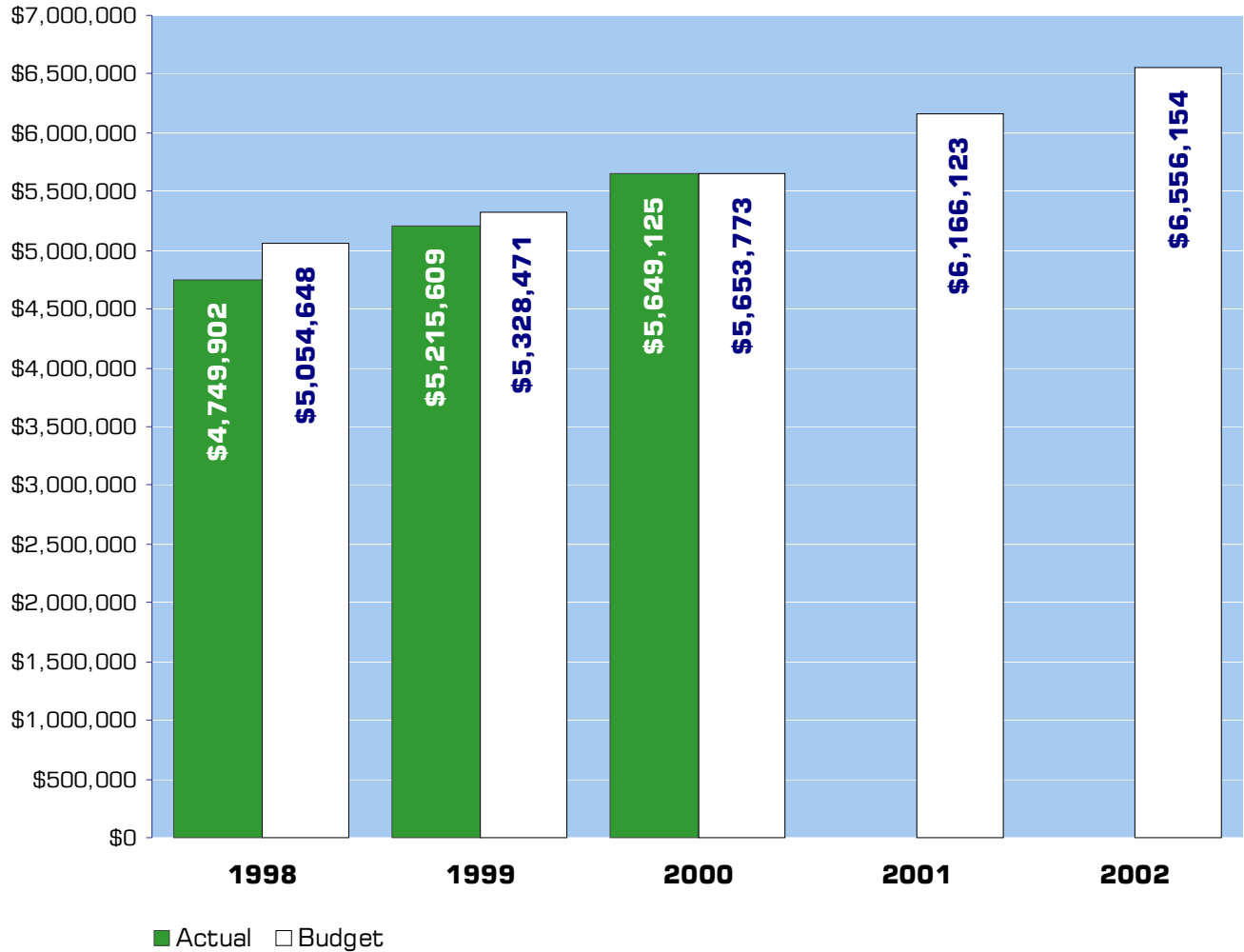
Provide for the detention of all adults legally remanded into custody by the court or law enforcement agencies. Operate the jail according to best correctional practices:

- Place offenders in the least restrictive environment allowed by their objective classification status, while ensuring the safety of the community.
- Whenever possible, provide offenders with the opportunity to positively change their behavior through the use of educational, vocational, and rehabilitative programs, and utilize the full range of correctional options available in order to assist in this process.
- Operate all correctional facilities in a safe and secure manner, fulfilling all legal and moral imperatives.
- Provide a healthy environment for the offenders, the staff and other members of the community.
- Manage the jail and any other correction facilities in a fiscally responsible manner.
- Facilitate the continued professional development of the corrections staff through meaningful training opportunities and experiences.
- Hold corrections staff to the highest standards of professional conduct as promulgated in the departmental rules, regulation and policies.

Objectives

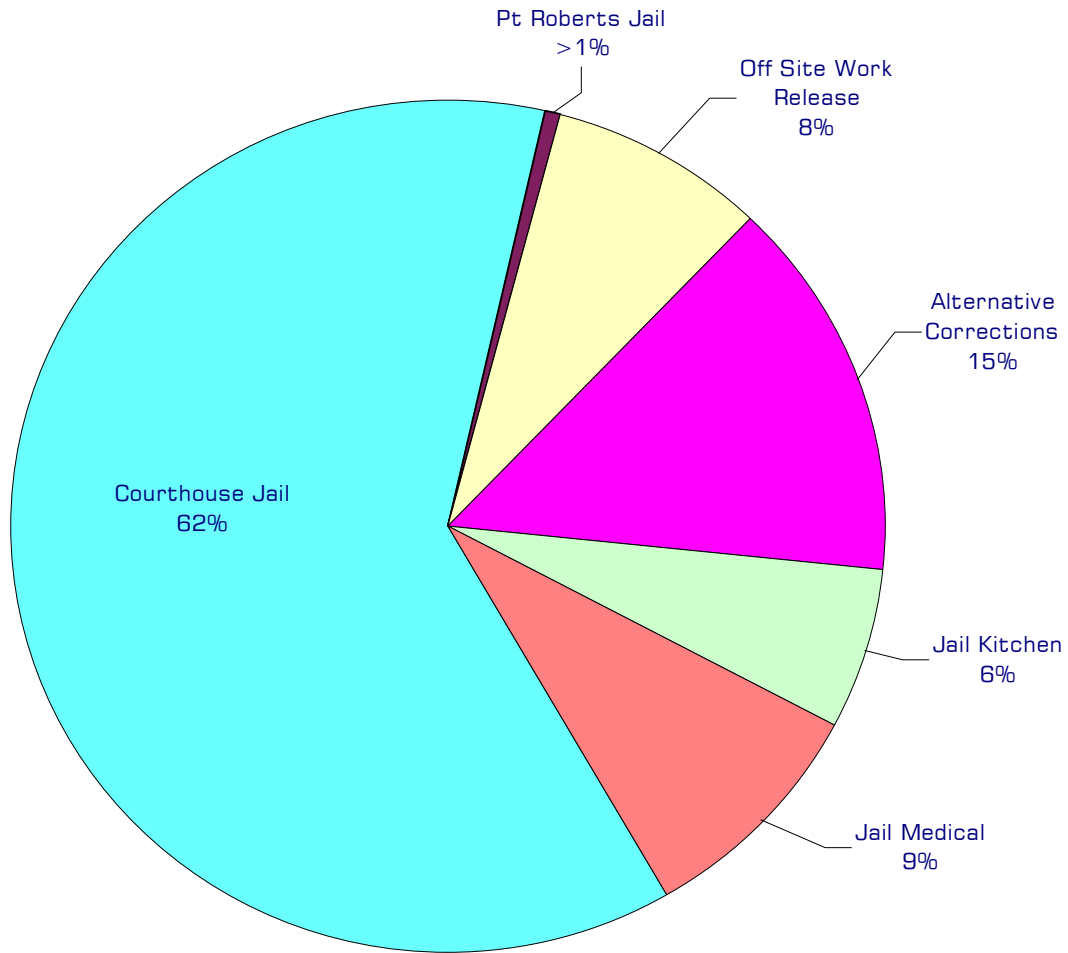
- Move forward with the planning process for a new minimum/medium security corrections facility.
- Increase the staffing level at the jail to provide adequate levels of supervision in order that the facility is run in a safe and secure manner.
- Reduce the amount of hospital Emergency Department visits by 50%, by instituting 24/7 nursing coverage at the jail.
- Complete a 5 year Strategic Plan for the jail, outlining long term objectives, goal and strategies.
- Continue expansion of the Jail Alternatives Programs.
- Support the continued professional growth of supervisory and management personnel, in order to develop a strong professional base from which to draw future leaders.
- Significantly expand the participation of appropriately classified female offenders in work release and work crew.

Expenditure Trends



NOTE: Capital expenditures and interfund operating transfers are not shown to more accurately reflect ongoing operational costs.

2002 Budget by Program



NOTE: Capital expenditures and interfund operating and residual equity transfers are not shown to more accurately reflect ongoing operational costs.

Program Summary

Actual 1998	Actual 1999	Actual 2000	Budget 2001	Budget 2002	\$ Change 2001 to 2002	% Change 2001 to 2002
----------------	----------------	----------------	----------------	----------------	------------------------------	-----------------------------

OPERATIONS

General Fund							
1800 Courthouse Jail	4,049,055	4,247,625	3,492,457	3,978,168	4,063,332	85,164	2.14%
1810 Pt Roberts Jail	23,181	22,787	23,031	23,957	28,108	4,151	17.33%
1820 Off Site Work Release	339,808	398,188	399,672	405,500	529,250	123,750	30.52%
1830 Local Law Enforce-Blk Grant	15,985	750	-	-	-	-	0.00%
1840 Alternative Corrections	321,873	546,259	673,178	731,647	954,193	222,546	30.42%
1850 Jail Kitchen	-	-	420,808	391,265	398,265	7,000	1.79%
1860 Jail Medical	-	-	639,979	511,023	583,006	71,983	14.09%
1870 Jail Commissary	-	-	-	124,563	-	(124,563)	-100.00%
<i>Total Jail Operations</i>	4,749,902	5,215,609	5,649,125	6,166,123	6,556,154	390,031	6.33%

CAPITAL

General Fund							
1800 Courthouse Jail	71,738	47,547	2,894	505,500	105,500	(400,000)	-79.13%
1840 Alternative Corrections	59,227	22,629	6,528	6,600	3,000	(3,600)	-54.55%
1850 Jail Kitchen	-	-	15,026	10,513	20,000	9,487	90.24%
<i>Total Jail Capital</i>	130,965	70,176	24,448	522,613	128,500	(394,113)	-75.41%

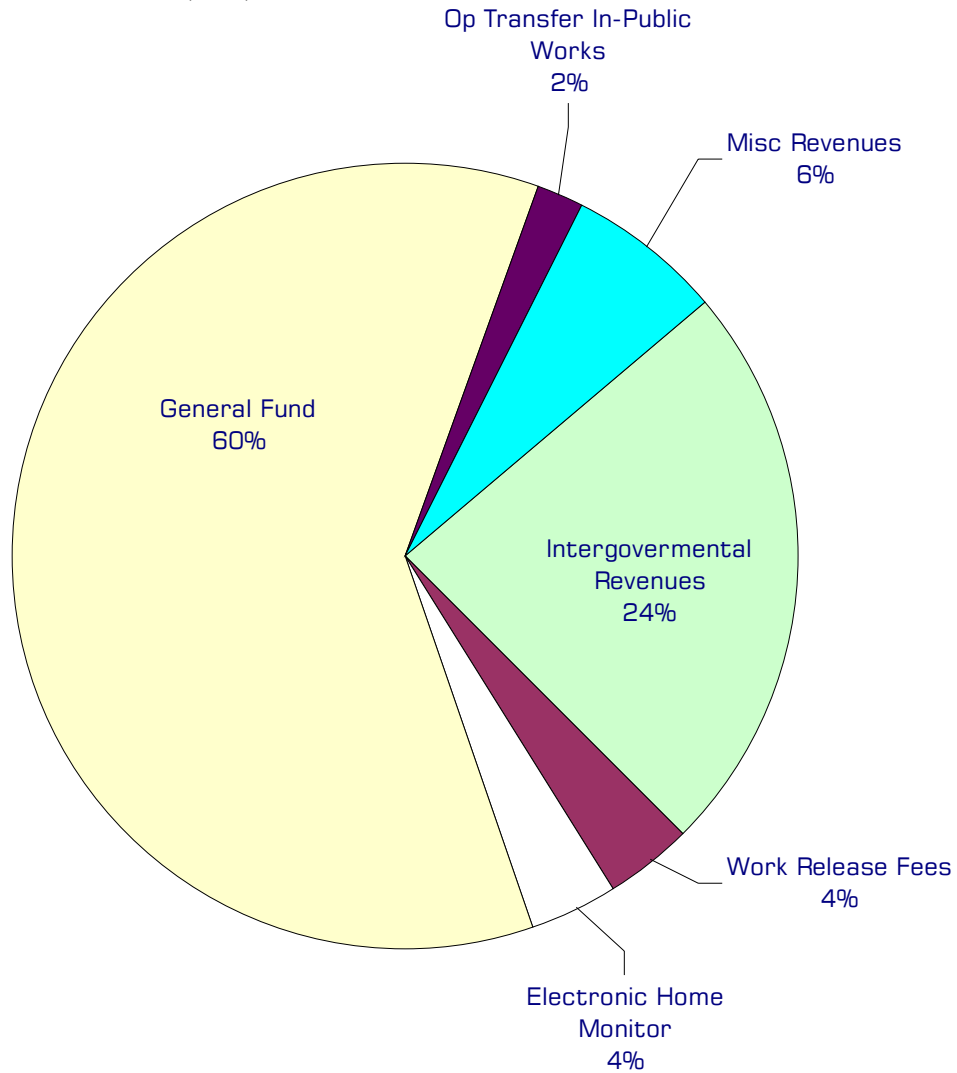
TRANSFERS

General Fund							
1800 Courthouse Jail	73,134	22,000	14,105	36,093	444,093	408,000	1130.41%
1840 Alternative Corrections	42,850	20,000	-	-	-	-	0.00%
1860 Jail Medical	-	-	42,000	42,000	42,000	-	0.00%
<i>Total Sheriff Transfers</i>	115,984	42,000	56,105	78,093	486,093	408,000	522.45%

TOTAL JAIL	4,996,851	5,327,785	5,729,678	6,766,829	7,170,747	403,918	5.97%
-------------------	-----------	-----------	-----------	-----------	-----------	---------	-------

2002 Funding Sources

Intergovernmental Revenues	1,555,507
Work Release Fees	236,633
Electronic Home Monitor	233,538
General Fund	3,985,498
Op Transfer In-Public Works	121,607
Misc Revenues	423,371
<hr/>	
Total Funding	6,556,154



Funding Sources continued

Intergovernmental Revenues

The jail receives rent for housing other jurisdictions' prisoners in available jail space. The rate at which space is charged varies by contract between the different governmental entities. Municipalities and other counties pay at the rate of \$58 per prisoner per day.

Work Release Fees

Participants in the work release program pay 1% of their monthly gross wage for each day they work as a fee. The average daily fee is \$15.

Electronic Home Monitor

Revenue received from inmates in the electronic home monitoring program, who pay a \$15 fee per day for the use of the monitoring device.

General Fund

Undedicated General Fund resources.

Concession Sales - Inmates

Through the jail commissary, a variety of goods are sold to inmates. The proceeds from these sales are returned to the jail as revenue.

Operating Transfer In from Public Works

Funding from a centennial grant received by Public Works for a work crew supervisor.

Miscellaneous Revenues

Revenue generated by inmate phones, reimbursement from the City of Bellingham for a work crew coordinator, electronic home monitoring program fees, inmate booking fees and other small revenues from various sources.

Performance / Activity Measures

	Actual 1998	Actual 1999	Actual 2000	Projected 2001	Projected 2002
Jail bed days diverted to Jail Alternatives	17,621	21,246	23,055	25,528	25,783
Fit for Jail Examinations utilizing jail nursing staff for medical screening	322	416	399	308	154
Female offender work crew per day	-	-	-	-	10
Inmate disturbances in the jail	n/a	11	23	45	20

Expenditures Summary

	Actual 1998	Actual 1999	Actual 2000	Budget 2001	Budget 2002	\$ Change 2001 to 2002	% Change 2001 to 2002
GENERAL FUND							
1800 Courthouse Jail							
Salaries & Wages	2,016,317	2,112,184	2,103,271	2,242,331	2,383,752	141,421	6.31%
Benefits	579,867	573,753	543,408	630,465	661,631	31,166	4.94%
Supplies	522,125	579,835	159,151	81,246	80,231	(1,015)	-1.25%
Other Services & Charges	930,746	981,853	686,627	1,024,126	937,718	(86,408)	-8.44%
Capital Outlay	71,738	47,547	2,894	505,500	105,500	(400,000)	-79.13%
Operating Transfers	57,724	22,000	14,105	36,093	444,093	408,000	1130.41%
Residual Equity Transfers	15,410	-	-	-	-	-	0.00%
<i>Total Courthouse Jail</i>	<i>4,193,927</i>	<i>4,317,172</i>	<i>3,509,456</i>	<i>4,519,761</i>	<i>4,612,925</i>	<i>93,164</i>	<i>2.06%</i>
1810 Point Roberts Jail							
Supplies	-	-	-	150	150	-	0.00%
Other Services & Charges	23,181	22,787	23,031	23,807	27,958	4,151	17.44%
<i>Total Point Roberts Jail</i>	<i>23,181</i>	<i>22,787</i>	<i>23,031</i>	<i>23,957</i>	<i>28,108</i>	<i>4,151</i>	<i>17.33%</i>
1820 Off Site Work Release							
Other Services & Charges	339,808	398,188	399,672	405,500	529,250	123,750	30.52%
<i>Total Involuntary Treatment</i>	<i>339,808</i>	<i>398,188</i>	<i>399,672</i>	<i>405,500</i>	<i>529,250</i>	<i>123,750</i>	<i>30.52%</i>
1830 Local Law Enforce - Blk Grant							
Salaries & Wages	14,055	664	-	-	-	-	0.00%
Benefits	1,823	86	-	-	-	-	0.00%
Supplies	107	-	-	-	-	-	0.00%
<i>Total Local Law Enforce - Blk G</i>	<i>15,985</i>	<i>750</i>	<i>-</i>	<i>-</i>	<i>-</i>	<i>-</i>	<i>0.00%</i>
1840 Alternative Corrections							
Salaries & Wages	189,927	304,992	341,854	387,497	454,820	67,323	17.37%
Benefits	55,641	84,944	115,206	126,641	145,371	18,730	14.79%
Supplies	22,544	53,558	50,783	66,998	93,598	26,600	39.70%
Other Services & Charges	53,761	102,765	165,335	150,511	260,404	109,893	73.01%
Capital Outlay	59,227	22,629	6,528	6,600	3,000	(3,600)	-54.55%
Operating Transfers	35,000	20,000	-	-	-	-	0.00%
Residual Equity Transfers	7,850	-	-	-	-	-	0.00%
<i>Total Courthouse Jail</i>	<i>423,950</i>	<i>588,888</i>	<i>679,706</i>	<i>738,247</i>	<i>957,193</i>	<i>218,946</i>	<i>29.66%</i>
1850 Jail Kitchen							
Salaries & Wages	-	-	117,408	120,042	-	(120,042)	-100.00%
Benefits	-	-	31,595	35,071	-	(35,071)	-100.00%
Supplies	-	-	267,787	234,952	10,000	(224,952)	-95.74%
Other Services & Charges	-	-	4,018	1,200	388,265	387,065	32255.42%
Capital Outlay	-	-	15,026	10,513	20,000	9,487	90.24%
<i>Total Jail Kitchen</i>	<i>-</i>	<i>-</i>	<i>435,834</i>	<i>401,778</i>	<i>418,265</i>	<i>16,487</i>	<i>4.10%</i>

continued on next page

Expenditures Summary continued

	Actual 1998	Actual 1999	Actual 2000	Budget 2001	Budget 2002	\$ Change 2001 to 2002	% Change 2001 to 2002
1860 Jail Medical							
Salaries & Wages	-	-	24,735	26,289	27,805	1,516	5.77%
Benefits	-	-	8,140	9,227	10,194	967	10.48%
Supplies	-	-	123,943	110,000	157,500	47,500	43.18%
Other Services & Charges	-	-	483,161	365,507	387,507	22,000	6.02%
Operating Transfer	-	-	42,000	42,000	42,000	-	0.00%
<i>Total Jail Medical</i>	-	-	681,979	553,023	625,006	71,983	13.02%
1870 Jail Commissary							
Salaries & Wages	-	-	-	29,392	-	(29,392)	-100.00%
Benefits	-	-	-	9,638	-	(9,638)	-100.00%
Supplies	-	-	-	85,283	-	(85,283)	-100.00%
Other Services & Charges	-	-	-	250	-	(250)	-100.00%
<i>Total Jail Medical</i>	-	-	-	124,563	-	(124,563)	-100.00%
TOTAL JAIL	4,996,851	5,327,785	5,729,678	6,766,829	7,170,747	403,918	5.97%