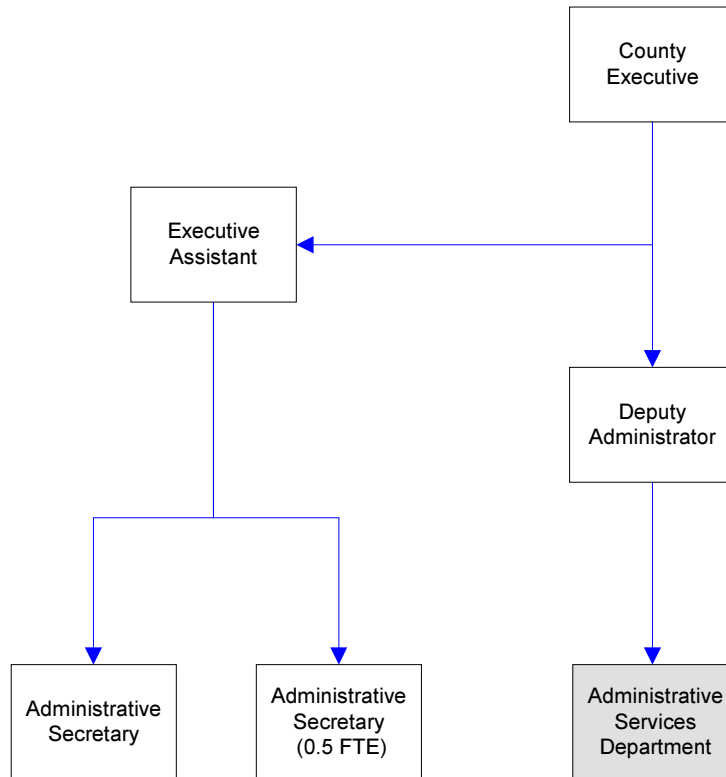


County Executive's Office



Mission & Objectives

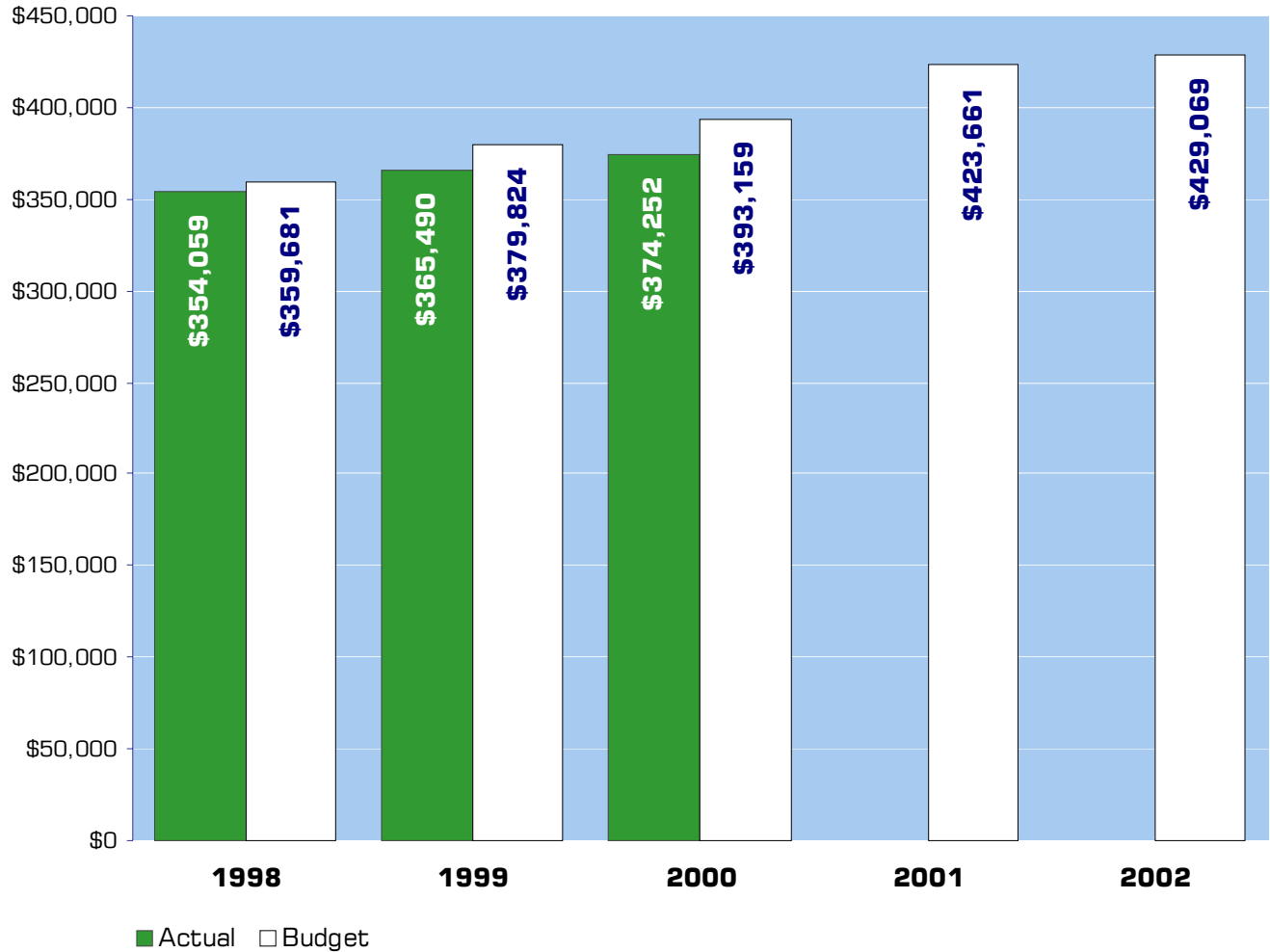
Mission

Coordinate and provide for the most effective, efficient, and responsive public service operation of all facets of county government through sound management and strategic direction, execution and enforcement of all ordinances and appropriate state statutes within the county, exercising of all executive powers not expressly vested in other elective officers, protecting the public trust and promoting the well-being of the citizens of Whatcom County.

Objectives

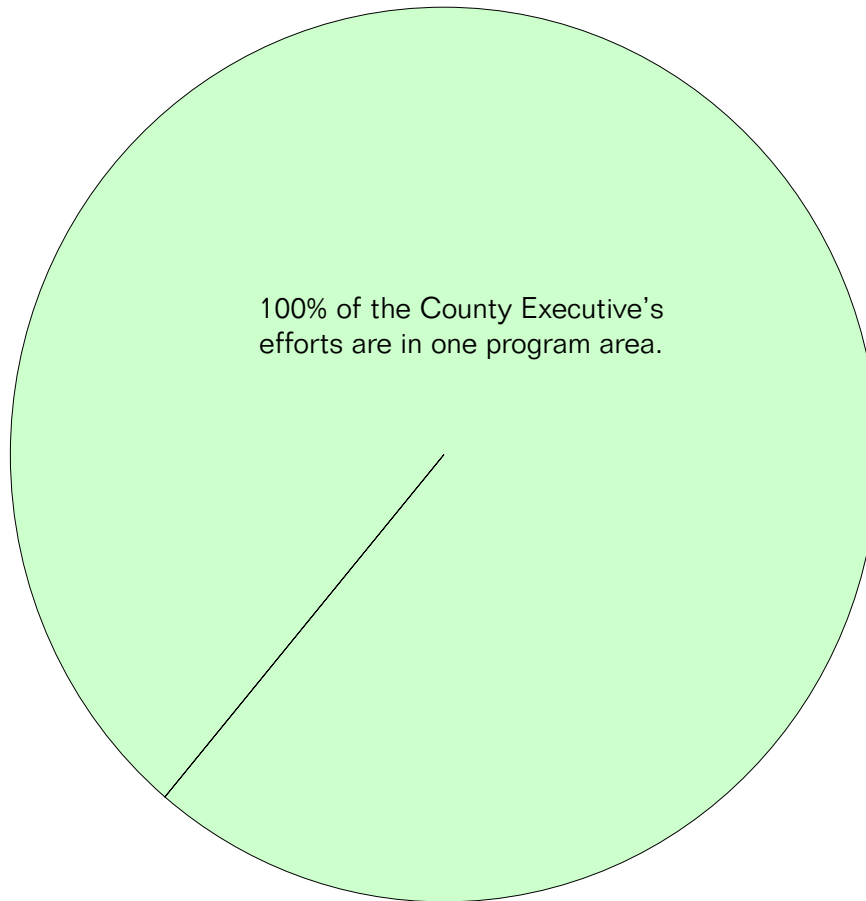
- Continue to carry out the goals and objectives as a part of the County Strategic Plan.
- Evaluate and carry out the recommendations as a result of the law & justice comprehensive plan.
- Continue to provide leadership for a coordinated program addressing water resource issues.
- Provide for a thorough review, revision and updating of the county's general and personnel policies and procedures.
- Work in a cooperative manner with the County Council, elected officials and department heads, to ensure the coordinated delivery of positive, responsive and effective services to the citizens of Whatcom County.
- Review current organization and operations to enhance efficiency.
- Improve mechanisms for public feedback regarding citizen interface with county government.
- Provide leadership to enable the county to act as a catalyst for positive community-oriented change.
- Measure and report the effectiveness of countywide and departmental services.
- Develop and implement a successful grant preparation and management mechanism directed at high priority needs in the county.

Expenditure Trends



NOTE: Capital expenditures and interfund operating transfers are not shown to more accurately reflect ongoing operational costs.

2002 Budget by Program



NOTE: Capital expenditures and interfund operating and residual equity transfers are not shown to more accurately reflect ongoing operational costs.

Program Summary

Actual 1998	Actual 1999	Actual 2000	Budget 2001	Budget 2002	\$ Change 2001 to 2002	% Change 2001 to 2002
----------------	----------------	----------------	----------------	----------------	------------------------------	-----------------------------

OPERATIONS

General Fund

1200 County Executive	354,059	365,490	374,252	423,661	429,069	5,408	1.28%
<i>Total Executive Operations</i>	354,059	365,490	374,252	423,661	429,069	5,408	1.28%

CAPITAL

General Fund

1200 County Executive	-	-	-	-	-	-	0.00%
<i>Total Executive Capital</i>	-	-	-	-	-	-	0.00%

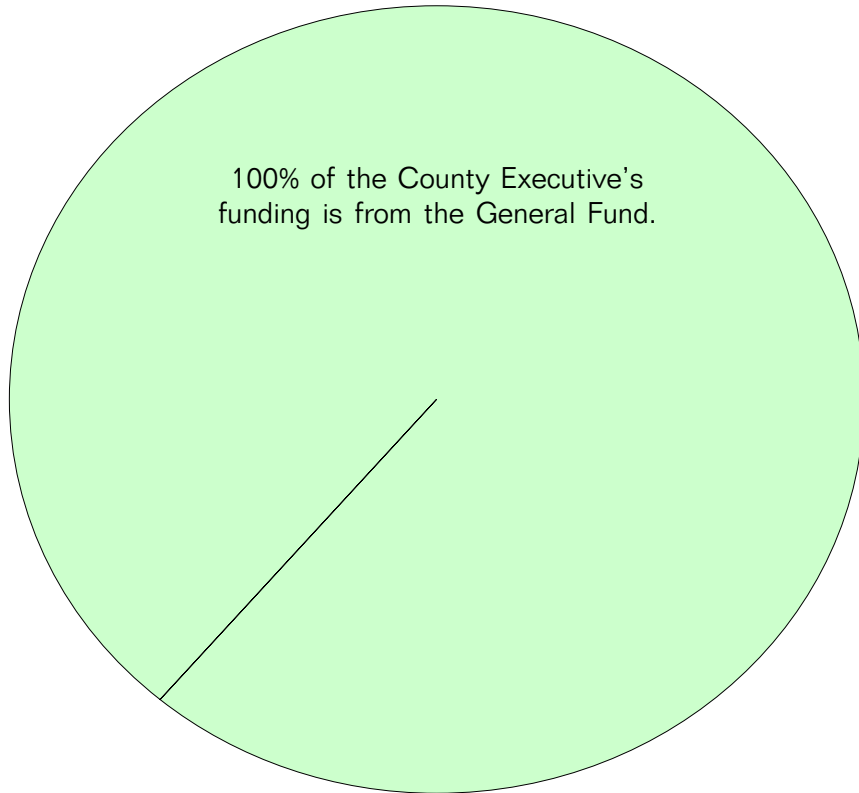
TOTAL EXECUTIVE	354,059	365,490	374,252	423,661	429,069	5,408	1.28%
------------------------	---------	---------	---------	---------	---------	-------	-------

2002 Funding Sources

General Fund	429,069
<hr/> Total Funding	<hr/> 429,069

General Fund

Undedicated General Fund resources.



Expenditures Summary

	Actual 1998	Actual 1999	Actual 2000	Budget 2001	Budget 2002	\$ Change 2001 to 2002	% Change 2001 to 2002
GENERAL FUND							
1200 County Executive							
Salaries & Wages	254,546	261,677	268,717	291,882	296,344	4,462	1.53%
Benefits	56,880	57,938	51,720	62,107	59,958	(2,149)	-3.46%
Supplies	5,188	4,839	5,461	10,150	10,150	-	0.00%
Other Services & Charges	37,445	41,036	48,354	59,522	62,617	3,095	5.20%
Capital Outlay	-	-	-	-	-	-	0.00%
<i>Total County Executive</i>	354,059	365,490	374,252	423,661	429,069	5,408	1.28%
<i>Total General Fund</i>	354,059	365,490	374,252	423,661	429,069	5,408	1.28%



Non-Departmental

“Non-Departmental” expenditures are administered by the County Executive’s Office. These expenditures include costs that are not attributable to specific program areas or departments.

Description of Services

ADA Improvements

Funding for ADA improvements based on ADA implementation plan. The goal is to make all programs and facilities compliant with the Americans with Disabilities Act of 1990.

Air Pollution Control

The Northwest Air Pollution Authority is responsible for prevention, abatement and control of air pollution within its jurisdiction. RCW 70.94 authorizes the Authority to levy assessments on a per capita basis on all jurisdictions within its boundaries.

Ambulance Services

The City of Bellingham provides ambulance services to the residents of unincorporated Whatcom County on a contractual basis.

Animal Control

Animal housing and control services, and enforcement of related ordinances is provided by contract for unincorporated areas of Whatcom County.

Annual State Audit

As mandated by state law, the county submits to an annual audit for compliance with professional governmental accounting- standards and finance-related legal requirements. Payment for services is to the State Auditor.

Association Dues

Whatcom County pays dues in several organization or associations such as Washington State Association of Counties (WSAC), Washington Association of County Officials (WACO), and National Association of County Officials (NACO).

Boundary Review Board

All corporate boundary changes such as incorporations, annexations or extension of services proposed by cities or special purpose districts are reviewed by the Board which considers the effects of such actions on area residents. The payment of a \$200 fee per action allows affected jurisdictions, such as Whatcom County, to request a public hearing before the Board so that agreement on differences may be reached prior to the action of the Board being finalized.

Chamber - Business Service Center

Funding is provided to enhance the services offered to small and medium-sized businesses in Whatcom County through the Business Service Center at the Bellingham Whatcom Chamber of Commerce. The Center acts as an information/referral and education for new businesses looking at our area, existing businesses seeking expansion information, and local and incoming start-up counseling.

Civil Service Commission

Pursuant to RCW 41.14, the Commission is required to oversee the administration of the civil service for the Sheriff's Office. The county must pay for the services provided by the Civil Service Commission.

Council of Governments

The Whatcom County Council of Governments is an intergovernmental agency supported by the jurisdictions it includes. It was formed to coordinate planning and community development within the county.

County Morgue

The county pays for the lease, utilities, and

Description of Services continued

operating supplies for the morgue to perform autopsy services.

Criminal Justice Data Integration

Funding to provide a programmer to allow the Sheriff, Superior Court, District Court, Juvenile, Jail, District Court Probation and other Justice organizations to have access to information on-line as soon as it is entered and reduce duplicating entries and files. Also provides for evaluation of law and justice projects.

Domestic Violence

Whatcom County contracts with Womenscare Shelter to provide temporary shelter and assistance to women in violent domestic situations. The county also participates with the City of Bellingham in funding the Bellingham Whatcom County Commission Against Domestic Violence.

Economic Development

A portion of the county budget is allocated to support economic development and job creation. The county contracts with the Bellingham-Whatcom Economic Development Council for this activity.

Emergency Communication - 911

A county-wide emergency communication system is operated by the City of Bellingham with the support of all jurisdictions within the county. The county pays proportionately for the services provided to residents of the unincorporated area.

Employee Recognition

Whatcom County recognizes the dedication and hard work of county employees at retirement and annually at a picnic funded by donations from the local businesses.

Horticultural Inspection

The county contracts with the Washington State Department of Agriculture for horticulture inspection services in support of the agriculture industry in Whatcom County.

Horticulture Pest & Disease Board

Board enables Whatcom County to more effectively control and prevent the spread of horticultural pests and diseases.

Imaging

Funding for an imaging system for the Assessor's Office that is compatible with the one now running in the Auditor's Office.

Indigent Burial

In 1993 the state stopped supporting burial of people who died without resources to cover their own burial costs and put that expense on local government. The county must pay for the disposition of indigent human remains, as per RCW 60.50.010.

Law and Justice Council

The Law and Justice Council was established by the legislative action of the Whatcom County Council, as required by RCW 72.09.300, for the purpose of developing a local law and justice strategic plan for the county. The Law and Justice Council is charged with the responsibility of designing the elements and scope of the plan, subject to final approval by the County Council. The general intent of the plan is to seek the means to maximize the efficiency and effectiveness of local law and justice resources. The Law and Justice Council provides an official countywide forum for the discussion of local law and justice issues from which recommendations may be developed and presented to county

Description of Services continued

government or other appropriate local governmental entities.

Leave Payout

The county must payout excess sick leave and vacation accrual and other retiree costs when an employee retires from the county.

LEOFF Board

RCW 41.26.110 requires a board to act on all claims for disability to be paid by the Law Enforcement Officers' and Fire Fighters' (LEOFF) retirement system plan.

Lydia Place

The county assists with program funding to Lydia Place, which provides housing to women and children in transition from homelessness.

Medical Examiner

Whatcom County contracts medical examiner services. The office and function of the Medical Examiner are established by the RCW 68.08.

Microfilming

Funding to provide for microfilming of the backlog of files stored in the Records Center.

Miscellaneous

Other services and charges.

Northwest Regional Council

The Northwest Regional Council (NWRC) is an intergovernmental agency which provides certain specific law enforcement-related support regionwide (i.e. radio repeater sites, etc.), and services for the aging. All jurisdictions in the four northwest counties (Whatcom, Skagit, Island, and San Juan) share in the cost of this agency.

Public Health/Home Health

Whatcom County has an agreement with the Visiting Nurse/NWRC for reimbursement to compensate uncompensated Home Health Care Services and Nursing Services for the Well Adult Clinic.

Senior Support

The county provides support for the Whatcom Volunteer Center (formerly RSVP) which places seniors who wish to volunteer their services in county offices and agencies.

Short Term Interest

The county must pay the interest due on debt outstanding less than one year.

Sister County Effort

Whatcom County has developed a sister county relationship with Ganghwa County in South Korea to explore new and creative opportunities to promote trade and tourism as well as implement cultural and educational exchanges.

Strategic Planning

Continued funding to maintain the county's Strategic Plan.

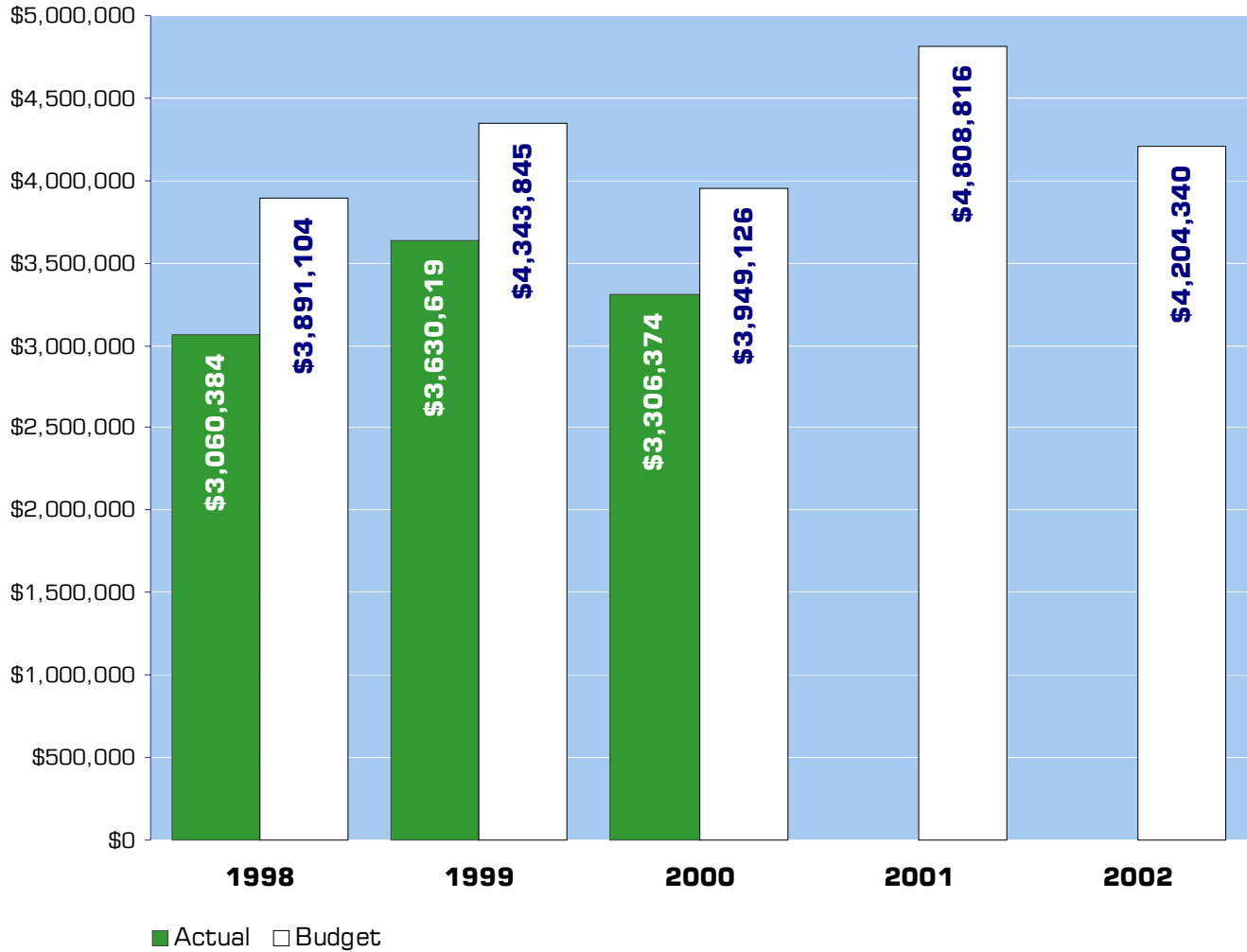
Starling Program

The county's contribution for the Starling Control Program.

Water Conservancy Board

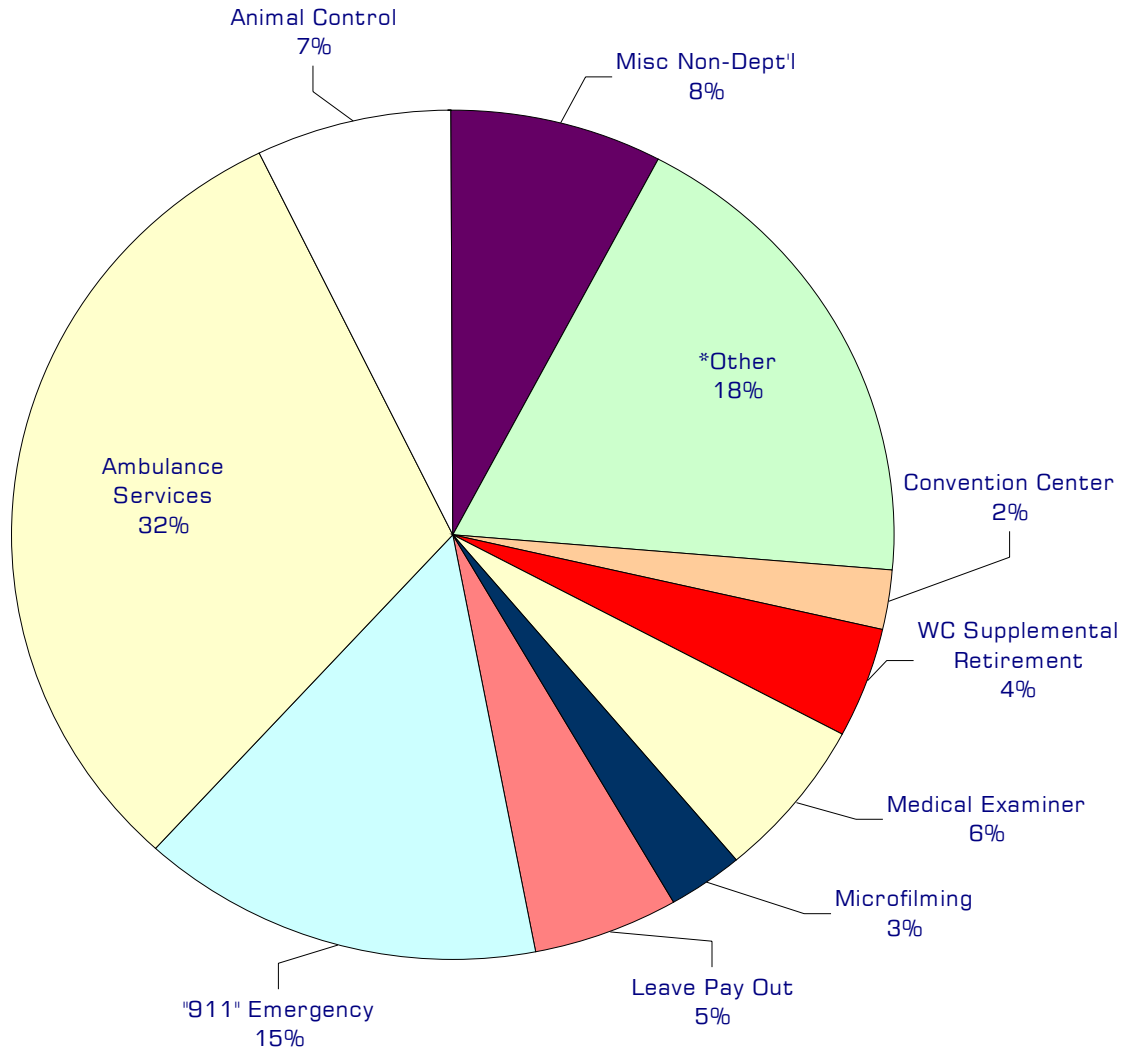
The county provides an initial set up to provide staff support through a contract with NWRC to the Water Conservancy Board.

Expenditure Trends



NOTES: Capital expenditures and interfund operating transfers are not shown to more accurately reflect ongoing operational costs.

2002 Budget by Program



Notes: Capital expenditures and interfund operating transfers are not shown to more accurately reflect ongoing operational costs.

***Other" is composed of: Indigent Burial, County Morgue, Criminal Justice Data Integration, Strategic Planning, Public Health/Home Health, Employee Recognition, Association Dues, Civil Service Commission, Horticultural Inspection, Law & Justice Strategic Plan, LEOFF Board, Domestic Violence, Annual State Audit, Northwest Regional Council, Air Pollution Control, Pest Control, Volunteer Support, Planning/Com Dev COG, Boundary Review, Starling program, Sister County Project, Water Conservancy Board, Chamber Business Service Center, Economic Development, Lydia Place, ADA Improvements, Misc. Non-Departmental, and Conservation Futures..*

Program Summary

	Actual 1998	Actual 1999	Actual 2000	Budget 2001	Budget 2002	\$ Change 2001 to 2002	% Change 2001 to 2002
OPERATIONS							
General Fund							
2100 Medical Examiner	238,986	240,975	246,789	251,000	260,000	9,000	3.59%
4010 Microfilming	47,780	164,309	129,414	156,458	113,647	(42,811)	-27.36%
4014 Ethics Commission	162	-	-	-	-	-	0.00%
4017 Law & Justice Strategic Plan	21,027	151,319	74,726	109,720	89,720	(20,000)	-18.23%
4025 Indigent Burial	12,045	10,867	19,939	15,000	15,000	-	0.00%
4035 County Morgue	52,476	58,506	62,304	71,892	73,002	1,110	1.54%
4040 Strategic Planning	1,379	935	664	4,000	4,000	-	0.00%
4045 Cable Television	-	467	-	1,200	-	(1,200)	-100.00%
4050 Domestic Violence	83,000	15,000	15,000	15,000	15,000	-	0.00%
4055 Starling Program	10,000	10,000	10,000	15,000	15,000	-	0.00%
4060 Public Health/ Home Health	5,206	9,501	5,644	10,000	10,000	-	0.00%
4065 Forestry Forum	164	310	209	-	-	-	0.00%
4070 Annual State Audit	89,559	86,474	97,183	105,000	110,000	5,000	4.76%
4075 Leave Pay Out	114,469	310,350	119,153	300,000	225,000	(75,000)	-25.00%
4080 Short Term Interest	2,832	-	-	-	-	-	0.00%
4085 Employee Recognition	2,416	4,009	2,269	3,000	3,000	-	0.00%
4090 Association Dues	45,877	47,746	47,808	48,646	52,000	3,354	6.89%
4095 Wide Area Network Impl.	92,056	101,694	81,868	905	-	(905)	-100.00%
4100 Criminal Justice Data Integr.	44,808	42,657	1,701	201,299	60,000	(141,299)	-70.19%
4105 Sister County Project	-	-	-	5,000	5,000	-	0.00%
4110 Computer Training Center	6,763	12,896	1,122	-	-	-	0.00%
4115 Water Conservancy Board	-	-	-	7,500	3,500	(4,000)	-53.33%
4120 Civil Service Commission	1,200	1,200	1,200	6,000	6,000	-	0.00%
4125 Chamber Business Svc Center	-	-	-	7,500	7,500	-	0.00%
4130 Horticultural Inspection	9,828	10,133	10,028	10,000	10,000	-	0.00%
4135 Pest Control	-	-	621	5,000	5,000	-	0.00%
4140 Economic Development	15,000	15,000	15,000	15,000	15,000	-	0.00%
4160 LEOFF Board	146	158	331	4,100	4,100	-	0.00%
4240 Northwest Regional Council	62,898	67,133	65,312	66,206	67,843	1,637	2.47%
4250 Emerg Communication-911	405,616	475,760	518,332	626,110	611,766	(14,344)	-2.29%
4260 Whatcom Creek Incident	-	11,726	-	-	-	-	0.00%
4270 Ambulance Services	855,106	850,288	974,404	1,144,439	1,317,938	173,499	15.16%
4290 Air Pollution Control	25,022	25,341	25,244	25,567	25,987	420	1.64%
4300 Animal Control	271,350	278,131	285,082	300,000	300,000	-	0.00%
4440 Volunteer Support	30,000	30,000	30,000	35,000	35,000	-	0.00%
4450 Planning/ Com Dev COG	158,035	223,681	174,995	46,301	48,850	2,549	5.51%
4470 Nooksack Water	32,927	-	-	-	-	-	0.00%

continued on next page

Program Summary continued

	Actual 1998	Actual 1999	Actual 2000	Budget 2001	Budget 2002	\$ Change 2001 to 2002	% Change 2001 to 2002
4480 Lake Whatcom Mgmt Plan	24,267	5,789	-	-	-	-	0.00%
4490 Water Resource Inventory	4,627	-	-	-	-	-	0.00%
4510 Sean Humphrey House	-	18,000	-	-	-	-	0.00%
4515 Homeless Shelter/Lydia Place	-	-	-	7,500	7,500	-	0.00%
4520 Boundary Review	10,174	6,717	6,379	10,201	10,201	-	0.00%
4540 Capital Acquisitions	7,877	51,076	3,883	94,060	54,455	(39,605)	-42.11%
4900 Misc Non-Departmental	165,281	173,352	147,154	684,420	326,831	(357,589)	-52.25%
141 WC Convention Center	104,525	102,525	108,220	131,500	101,500	(30,000)	-22.81%
151 Community Development	2,000	-	-	-	-	-	0.00%
175 Conservation Futures Fund	3,500	16,594	24,396	25,000	25,000	-	0.00%
332 Public Utilities Imprv Fund	-	-	-	162,292	-	(162,292)	-100.00%
503 WC Supplemental Retirement Fund	-	-	-	82,000	170,000	88,000	107.32%
Total Non-Dept'l Operations	3,060,384	3,630,619	3,306,374	4,808,816	4,204,340	(604,476)	-12.57%
CAPITAL							
General Fund							
4010 Microfilm	17,666	6,574	-	-	-	-	0.00%
4015 Imaging	86,240	-	31,163	-	-	-	0.00%
4016 NW Annex Improvements	202,451	2,036	-	-	-	-	0.00%
4040 Strategic Planning	3,640	-	-	-	-	-	0.00%
4095 Wide Area Network Impl.	145,785	104,327	27,597	-	-	-	0.00%
4100 Criminal Justice Data Integr.	-	-	-	10,000	-	(10,000)	-100.00%
4110 Computer Training Center	30,098	-	-	-	-	-	0.00%
4540 Capital Acquisitions	76,968	-	-	1,276	-	(1,276)	-100.00%
4900 Misc Non-Departmental	35,535	9,373	-	6,959	-	(6,959)	-100.00%
175 Conservation Futures Fund	1,694,173	-	1,250,000	50,000	50,000	-	0.00%
Total Non-Dept'l Capital	2,292,556	122,310	1,308,760	68,235	50,000	(18,235)	-26.72%
TRANSFERS							
General Fund							
4490 Water Resource Inventory	-	250,000	-	-	-	-	0.00%
4530 Transfers to Other Funds	1,914,195	2,339,096	2,196,976	3,077,259	2,767,643	(309,616)	-10.06%
4900 Misc Non-Departmental	70,537	-	-	778,000	50,000	(728,000)	-93.57%
151 Community Development	17,000	17,000	5,000	5,000	5,000	-	0.00%
332 Public Utilities Imprv Fund	-	-	-	-	90,000	90,000	0.00%
Total Non-Dept'l Transfers	2,001,732	2,606,096	2,201,976	3,860,259	2,912,643	(947,616)	-24.55%
TOTAL NON-DEPARTMENTAL	7,354,672	6,359,025	6,817,110	8,737,310	7,166,983	(1,570,327)	-17.97%

2002 Funding Sources

Autopsy Fee	30,000
General Fund	4,044,840
Hotel/Motel Tax-Convention Ctr	101,500
Property Tax - Conserv Future	25,000
Miscellaneous	3,000
Total Funding	4,204,340

Property Tax - Conservation Futures

A tax imposed pursuant to RCW 84.34.230. It is levied at six and one quarter cents per \$1,000 of assessed valuation of real property within Whatcom County. The amounts placed in the conservation futures fund are used solely to acquire rights and interest in open space land, farm and agricultural land and timber land.

Autopsy Fees

Pursuant to RCW 68.50.104, the county is reimbursed for the costs of performing autopsies. The state pays for 40% of the cost of the services of the contracted pathologist used by the county.

Miscellaneous

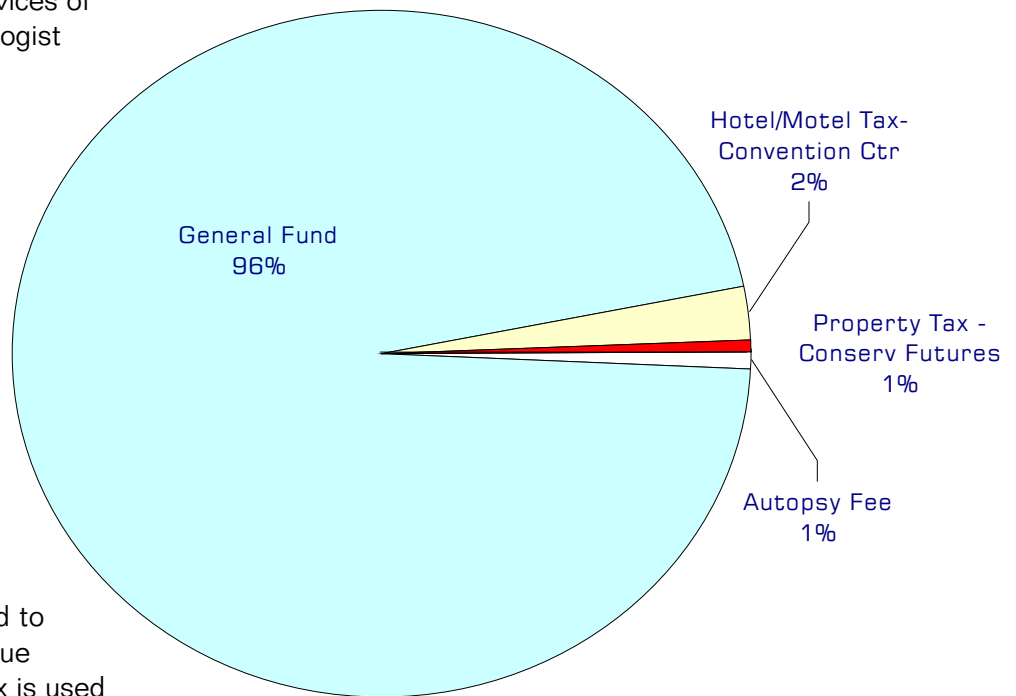
Collection of miscellaneous fees and charges.

General Fund

Undedicated General Fund resources.

Hotel/Motel Tax - Convention Center

Pursuant to RCW 67.28.210, the county levies an excise tax on hotel, motel or other lodging sales. The money is collected by the state and remitted to the county. The revenue collected from this tax is used for the acquisition, construction and operation of the Bellingham/Whatcom County Visitor/Convention Center.



NOTE: Chart does not include \$739,150 in the Conservation Futures Fund because these revenues are dedicated to capital expenditures and therefore do not fund ongoing operations.

Expenditures Summary

	Actual 1998	Actual 1999	Actual 2000	Budget 2001	Budget 2002	\$ Change 2001 to 2002	% Change 2001 to 2002
GENERAL FUND							
2100 Medical Examiner							
Other Services & Charges	238,986	240,975	246,789	251,000	260,000	9,000	3.59%
<i>Total Medical Examiner</i>	238,986	240,975	246,789	251,000	260,000	9,000	3.59%
4010 Microfilming							
Salaries	20,493	69,108	84,458	90,636	71,520	(19,116)	-21.09%
Benefits	2,035	25,579	31,309	35,822	27,127	(8,695)	-24.27%
Supplies	6,516	9,622	-	-	-	-	0.00%
Other Services & Charges	18,736	60,000	13,647	30,000	15,000	(15,000)	-50.00%
Capital	17,666	6,574	-	-	-	-	0.00%
<i>Total Microfilming</i>	65,446	170,883	129,414	156,458	113,647	(42,811)	-27.36%
4014 Ethics Commission							
Other Services & Charges	162	-	-	-	-	-	0.00%
<i>Total Ethics Commission</i>	162	-	-	-	-	-	0.00%
4015 Imaging							
Capital Outlay	86,240	-	31,163	-	-	-	0.00%
<i>Total Imaging</i>	86,240	-	31,163	-	-	-	0.00%
4016 NW Annex Improvements							
Capital Outlay	202,451	2,036	-	-	-	-	0.00%
<i>Total NW Annex Improvements</i>	202,451	2,036	-	-	-	-	0.00%
4017 Law & Justice Strategic Plan							
Other Services & Charges	21,027	151,319	74,726	109,720	89,720	(20,000)	-18.23%
<i>Total Law/Justice Strat Plan</i>	21,027	151,319	74,726	109,720	89,720	(20,000)	-18.23%
4025 Indigent Burial							
Other Services & Charges	12,045	10,867	19,939	15,000	15,000	-	0.00%
<i>Total Indigent Burial</i>	12,045	10,867	19,939	15,000	15,000	-	0.00%
4035 County Morgue							
Supplies	4,863	2,768	3,117	4,000	4,000	-	0.00%
Other Services & Charges	47,613	55,738	59,187	67,892	69,002	1,110	1.63%
<i>Total County Morgue</i>	52,476	58,506	62,304	71,892	73,002	1,110	1.54%
4040 Strategic Planning							
Supplies	519	83	-	-	-	-	0.00%
Other Services & Charges	860	852	664	4,000	4,000	-	0.00%
Capital Outlay	3,640	-	-	-	-	-	0.00%
<i>Total Strategic Planning</i>	5,019	935	664	4,000	4,000	-	0.00%
4045 Cable Television							
Other Services & Charges	-	467	-	1,200	-	(1,200)	-100.00%
<i>Total Cable Television</i>	-	467	-	1,200	-	(1,200)	-100.00%
4050 Domestic Violence							
Other Services & Charges	83,000	15,000	15,000	15,000	15,000	-	0.00%
<i>Total Domestic Violence</i>	83,000	15,000	15,000	15,000	15,000	-	0.00%

continued on next page

Expenditures Summary continued

	Actual 1998	Actual 1999	Actual 2000	Budget 2001	Budget 2002	\$ Change 2001 to 2002	% Change 2001 to 2002
4055 Starling Program							
Other Services & Charges	10,000	10,000	10,000	15,000	15,000	-	0.00%
<i>Total Starling Program</i>	10,000	10,000	10,000	15,000	15,000	-	0.00%
4060 Public Health/ Home Health							
Intergov Services & Charge	5,206	9,501	5,644	10,000	10,000	-	0.00%
<i>Total Public/Home Health</i>	5,206	9,501	5,644	10,000	10,000	-	0.00%
4065 Forestry Forum							
Supplies	164	149	106	-	-	-	0.00%
Intergov Services & Charge	-	161	103	-	-	-	0.00%
<i>Total Forestry Forum</i>	164	310	209	-	-	-	0.00%
4070 Annual State Audit							
Intergov Services & Charge	89,559	86,474	97,183	105,000	110,000	5,000	4.76%
<i>Total Annual State Audit</i>	89,559	86,474	97,183	105,000	110,000	5,000	4.76%
4075 Leave Pay Out							
Salaries & Wages	106,313	289,878	115,771	300,000	225,000	(75,000)	-25.00%
Benefits	8,156	20,472	3,382	-	-	-	0.00%
<i>Total Leave Pay Out</i>	114,469	310,350	119,153	300,000	225,000	(75,000)	-25.00%
4080 Short Term Interest							
Debt Service	2,832	-	-	-	-	-	0.00%
<i>Total Short Term Interest</i>	2,832	-	-	-	-	-	0.00%
4085 Employee Recognition							
Supplies	2,416	4,009	2,269	3,000	3,000	-	0.00%
<i>Total Employee Recognition</i>	2,416	4,009	2,269	3,000	3,000	-	0.00%
4090 Association Dues							
Other Services & Charges	45,877	47,746	47,808	48,646	52,000	3,354	6.89%
<i>Total Association Dues</i>	45,877	47,746	47,808	48,646	52,000	3,354	6.89%
4095 Wide Area Network Impl.							
Salaries & Wages	5,097	13,051	10,626	-	-	-	0.00%
Benefits	1,106	2,637	1,891	-	-	-	0.00%
Supplies	19,097	44,000	67,395	905	-	(905)	-100.00%
Other Services & Charges	66,756	42,006	1,956	-	-	-	0.00%
Capital Outlay	145,785	104,327	27,597	-	-	-	0.00%
<i>Total Wide Area Network Impl.</i>	237,841	206,021	109,465	905	-	(905)	-100.00%
4100 Criminal Justice Data Integr.							
Salaries & Wages	33,101	33,303	-	45,857	37,812	(8,045)	-17.54%
Benefits	9,261	9,354	-	11,754	10,049	(1,705)	-14.51%
Supplies	2,446	-	-	2,389	2,139	(250)	-10.46%
Other Services & Charges	-	-	1,701	141,299	10,000	(131,299)	-92.92%
Capital Outlay	-	-	-	10,000	-	(10,000)	-100.00%
<i>Total Crim Justice Date Integr</i>	44,808	42,657	1,701	211,299	60,000	(151,299)	-71.60%

continued on next page

Expenditures Summary continued

	Actual 1998	Actual 1999	Actual 2000	Budget 2001	Budget 2002	\$ Change 2001 to 2002	% Change 2001 to 2002
4105 Sister County Project							
Other Services & Charges	-	-	-	5,000	5,000	-	0.00%
<i>Total Sister County Project</i>	-	-	-	5,000	5,000	-	0.00%
4110 Computer Training Center							
Supplies	1,180	1,003	-	-	-	-	0.00%
Other Services & Charges	5,583	11,893	1,122	-	-	-	0.00%
Capital Outlay	30,098	-	-	-	-	-	0.00%
<i>Total Computer Training Center</i>	36,861	12,896	1,122	-	-	-	0.00%
4115 Water Conservancy Board							
Other Services & Charges	-	-	-	7,500	3,500	(4,000)	-53.33%
<i>Total Water Conservancy Board</i>	-	-	-	7,500	3,500	(4,000)	-53.33%
4120 Civil Service Commission							
Other Services & Charges	1,200	1,200	1,200	6,000	6,000	-	0.00%
<i>Total Civil Service Commission</i>	1,200	1,200	1,200	6,000	6,000	-	0.00%
4125 Chamber Business Svc Center							
Other Services & Charges	-	-	-	7,500	7,500	-	0.00%
<i>Total Chamber Bus. Svc Cntr</i>	-	-	-	7,500	7,500	-	0.00%
4130 Horticultural Inspection							
Other Services & Charges	828	1,133	10,028	1,000	1,000	-	0.00%
Intergov Services & Charge	9,000	9,000	-	9,000	9,000	-	0.00%
<i>Total Horticultural Inspection</i>	9,828	10,133	10,028	10,000	10,000	-	0.00%
4135 Pest Control							
Other Services & Charges	-	-	621	5,000	5,000	-	0.00%
<i>Total Pest Control</i>	-	-	621	5,000	5,000	-	0.00%
4140 Economic Development							
Other Services & Charges	15,000	15,000	15,000	15,000	15,000	-	0.00%
<i>Total Economic Development</i>	15,000	15,000	15,000	15,000	15,000	-	0.00%
4160 LEOFF Board							
Supplies	86	83	217	880	880	-	0.00%
Other Services & Charges	60	75	114	3,220	3,220	-	0.00%
<i>Total LEOFF Board</i>	146	158	331	4,100	4,100	-	0.00%
4240 Northwest Regional Council							
Intergov Services & Charge	62,898	67,133	65,312	66,206	67,843	1,637	2.47%
<i>Total NW Regional Council</i>	62,898	67,133	65,312	66,206	67,843	1,637	2.47%
4250 Emergency Communication - 911							
Intergov Services & Charge	405,616	475,760	518,332	626,110	611,766	(14,344)	-2.29%
<i>Total Emerg Communication</i>	405,616	475,760	518,332	626,110	611,766	(14,344)	-2.29%

continued on next page

Expenditures Summary continued

	Actual 1998	Actual 1999	Actual 2000	Budget 2001	Budget 2002	\$ Change 2001 to 2002	% Change 2001 to 2002
4260 Whatcom Creek Incident							
Salary & Wages	-	10,064	-	-	-	-	0.00%
Benefits	-	466	-	-	-	-	0.00%
Supplies	-	1,196	-	-	-	-	0.00%
<i>Total Whatcom Creek Incident</i>	-	11,726	-	-	-	-	0.00%
4270 Ambulance Services							
Intergov Services & Charge	855,106	850,288	974,404	1,144,439	1,317,938	173,499	15.16%
<i>Total Ambulance Services</i>	855,106	850,288	974,404	1,144,439	1,317,938	173,499	15.16%
4290 Air Pollution Control							
Intergov Services & Charge	25,022	25,341	25,244	25,567	25,987	420	1.64%
<i>Total Air Pollution Control</i>	25,022	25,341	25,244	25,567	25,987	420	1.64%
4300 Animal Control							
Other Services & Charges	271,350	278,131	285,082	300,000	300,000	-	0.00%
<i>Total Animal Control</i>	271,350	278,131	285,082	300,000	300,000	-	0.00%
4440 Volunteer Support							
Other Services & Charges	30,000	30,000	30,000	35,000	35,000	-	0.00%
<i>Total Volunteer Support</i>	30,000	30,000	30,000	35,000	35,000	-	0.00%
4450 Planning/Com Dev COG							
Intergov Services & Charge	158,035	223,681	174,995	46,301	48,850	2,549	5.51%
<i>Total Planning/Com Dev COG</i>	158,035	223,681	174,995	46,301	48,850	2,549	5.51%
4470 Nooksack Water							
Other Services & Charges	32,927	-	-	-	-	-	0.00%
<i>Total Nooksack Water</i>	32,927	-	-	-	-	-	0.00%
4480 Lake Whatcom Mgmt Plan							
Salaries & Wages	6,471	1,026	-	-	-	-	0.00%
Benefits	627	99	-	-	-	-	0.00%
Other Services & Charges	17,169	4,664	-	-	-	-	0.00%
<i>Total Lk Whatcom Mgmt Plan</i>	24,267	5,789	-	-	-	-	0.00%
4490 Water Resource Inventory Area							
Salaries & Wages	3,575	-	-	-	-	-	0.00%
Benefits	1,052	-	-	-	-	-	0.00%
Operating Transfers	-	250,000	-	-	-	-	0.00%
<i>Total Wtr Resource Inv Area</i>	4,627	250,000	-	-	-	-	0.00%
4510 Sean Humphrey House							
Other Services & Charges	-	18,000	-	-	-	-	0.00%
<i>Total Sean Humphrey House</i>	-	18,000	-	-	-	-	0.00%
4515 Homeless Shelter/Lydia Place							
Other Services & Charges	-	-	-	7,500	7,500	-	0.00%
<i>Total Homeless Shelter/Lydia Pl</i>	-	-	-	7,500	7,500	-	0.00%

continued on next page

Expenditures Summary continued

	Actual 1998	Actual 1999	Actual 2000	Budget 2001	Budget 2002	\$ Change 2001 to 2002	% Change 2001 to 2002
4520 Boundary Review Board							
Supplies	397	33	30	200	200	-	0.00%
Other Services & Charges	9,777	6,684	6,349	10,001	10,001	-	0.00%
<i>Total Boundary Review Board</i>	10,174	6,717	6,379	10,201	10,201	-	0.00%
4530 Transfer to Other Funds							
Operating Transfers	1,914,195	2,339,096	2,196,976	3,077,259	2,767,643	(309,616)	-10.06%
<i>Total Transfer to Other Funds</i>	1,914,195	2,339,096	2,196,976	3,077,259	2,767,643	(309,616)	-10.06%
4540 Capital Acquisitions							
Supplies	-	5,816	2,482	876	-	(876)	-100.00%
Other Services & Charges	7,877	45,260	1,401	93,184	54,455	(38,729)	-41.56%
Capital Outlay	76,968	-	-	1,276	-	(1,276)	-100.00%
<i>Total Capital Acquisitions</i>	84,845	51,076	3,883	95,336	54,455	(40,881)	-42.88%
4900 Miscellaneous Non-Departmental							
Salaries & Wages	-	-	-	360,000	100,000	(260,000)	-72.22%
Benefits	1,507	-	-	-	-	-	0.00%
Supplies	424	-	-	-	-	-	0.00%
Other Services & Charges	163,350	173,352	147,154	324,420	226,831	(97,589)	-30.08%
Capital Outlay	35,535	9,373	-	6,959	-	(6,959)	-100.00%
Operating Transfers	70,537	-	-	778,000	50,000	(728,000)	-93.57%
<i>Total Misc. Non-Departmental</i>	271,353	182,725	147,154	1,469,379	376,831	(1,092,548)	-74.35%
TOTAL GENERAL FUND	5,533,474	6,222,906	5,429,494	8,281,518	6,725,483	(1,556,035)	-18.79%
141 WC CONVENTION CENTER FUND							
Convention Center							
Other Services & Charges	104,525	102,525	108,220	131,500	101,500	(30,000)	-22.81%
<i>Total Convention Center</i>	104,525	102,525	108,220	131,500	101,500	(30,000)	-22.81%
151 COMMUNITY DEVELOPMENT FUND							
Community Development							
Other Services & Charges	2,000	-	-	-	-	-	0.00%
Operating Transfers	17,000	17,000	5,000	5,000	5,000	-	0.00%
<i>Total Community Develop Fund</i>	19,000	17,000	5,000	5,000	5,000	-	0.00%
175 CONSERVATIONS FUTURE FUND							
Other Services & Charges	3,500	16,594	24,396	25,000	25,000	-	0.00%
Capital Outlay	1,694,173	-	1,250,000	50,000	50,000	-	0.00%
<i>Total Conservation Futures Fund</i>	1,697,673	16,594	1,274,396	75,000	75,000	-	0.00%
332 PUBLIC UTILITIES IMPRV FUND							
Other Services & Charges	-	-	-	162,292	-	(162,292)	-100.00%
Operating Transfers	-	-	-	-	90,000	90,000	0.00%
<i>Total Public Utilities Imprv Fund</i>	-	-	-	162,292	90,000	(72,292)	-44.54%
503 WHATCOM COUNTY SUPPLEMENTAL RETIREMENT FUND							
Benefits	-	-	-	82,000	170,000	88,000	107.32%
<i>Total WC Suppl Retirement Fund</i>	-	-	-	82,000	170,000	88,000	107.32%
TOTAL NON-DEPARTMENTAL	7,354,672	6,359,025	6,817,110	8,737,310	7,166,983	(1,570,327)	-17.97%