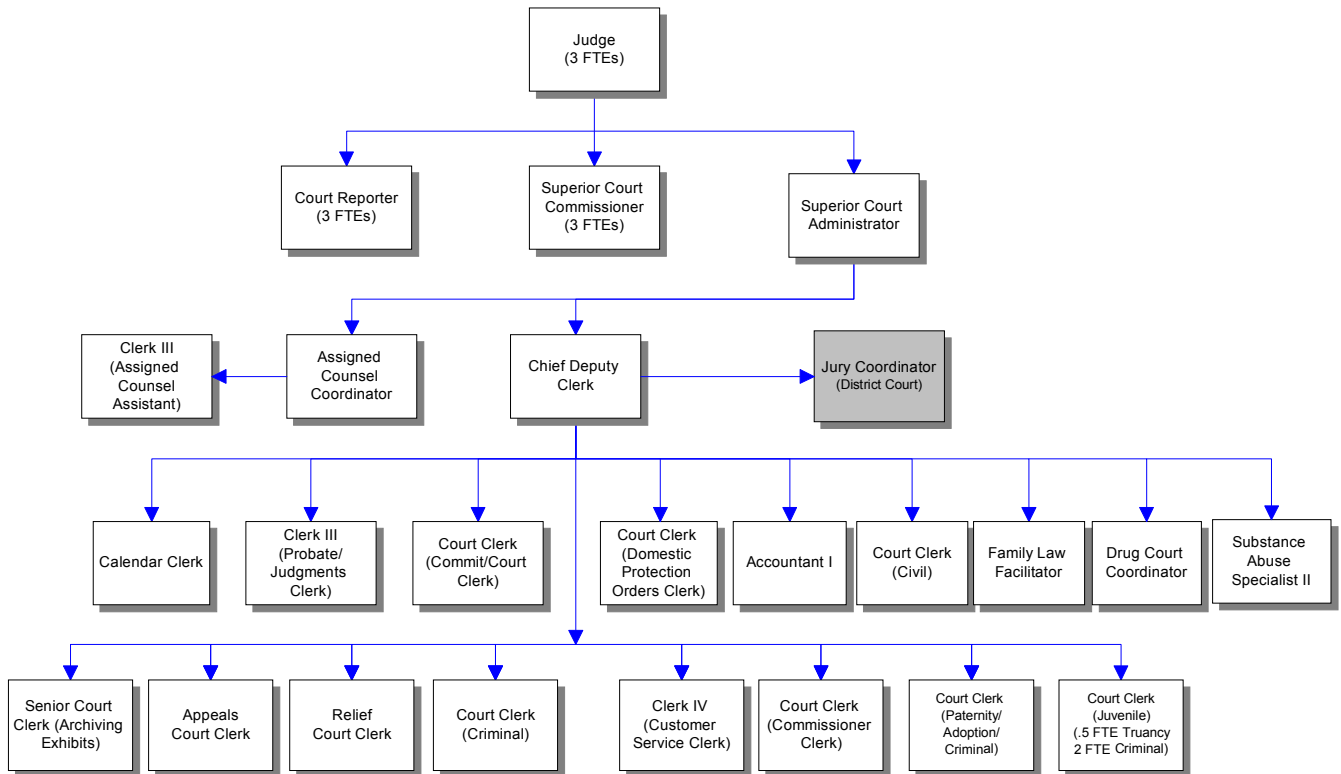


Superior Court Clerk's Office



Mission & Objectives

Mission

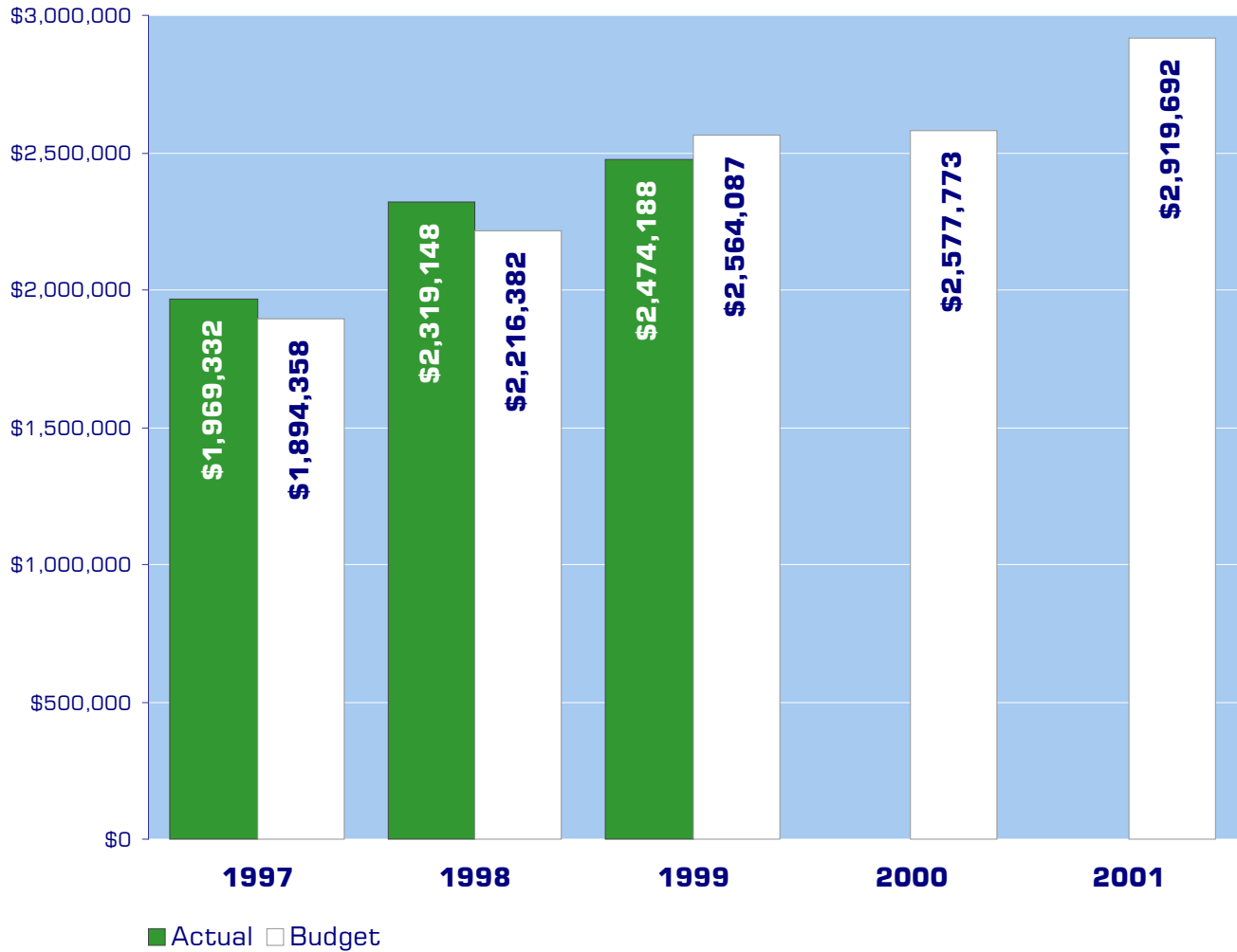
The mission of the Superior Court, Assigned Counsel, County Clerk and Family Court Services is to improve the quality and the perception of the quality of justice in Whatcom County by identifying deficiencies in and implementing measures to improve:

- 1) Access to justice
- 2) Expedition and timeliness
- 3) Equality, fairness and integrity
- 4) Independence and accountability
- 5) Public trust and confidence

Objectives

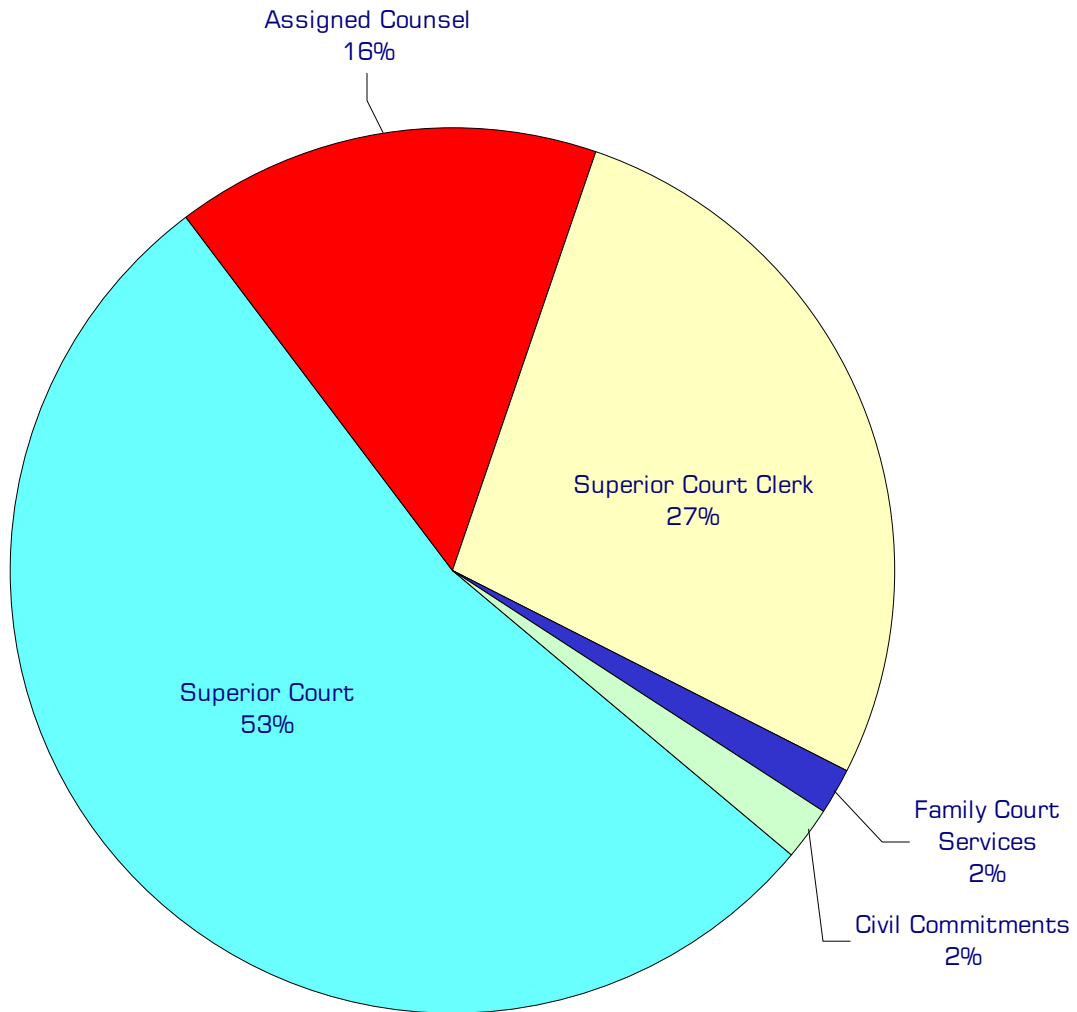
- Research, design and implement “Differentiated Case Management” as recommended by the Law & Justice Report, by categorizing cases at the time of filing, assigning discrete tracks, monitoring and controlling the progress of case from filing to conclusion, to maximize efficiency of judicial resources and provide for expeditious conclusion of non-criminal disputes and speedy justice for those accused of crime and their victims of crime.
- Seek to identify and implement greater assistance to pro se litigants; expand Courthouse Facilitator services, including non-domestic relations assistance.
- Work with sister courts and offices to enhance customer service by consolidating appropriate services.

Expenditure Trends



NOTE: Capital expenditures and interfund operating transfers are not shown to more accurately reflect ongoing operational costs.

2001 Budget by Program



NOTE: Capital expenditures and interfund operating and residual equity transfers are not shown to more accurately reflect ongoing operational costs.

Program Summary

	Actual 1997	Actual 1998	Actual 1999	Budget 2000	Budget 2001	\$ Change 2000 to 2001	% Change 2000 to 2001
OPERATIONS							
General Fund							
3100 Superior Court	938,172	1,124,620	1,216,519	1,314,766	1,561,282	246,516	18.75%
3140 Assigned Counsel	400,991	488,817	431,800	433,867	459,094	25,227	5.81%
3150 Superior Court Clerk	588,834	663,427	731,639	785,035	793,760	8,725	1.11%
3160 Family Court Services	41,335	42,284	44,533	44,105	45,556	1,451	3.29%
3170 Drug Courts Grant	-	-	19,862	-	-	-	0.00%
3180 Civil Commitments	-	-	29,835	-	60,000	60,000	0.00%
<i>Total Superior Court Operations</i>	<i>1,969,332</i>	<i>2,319,148</i>	<i>2,474,188</i>	<i>2,577,773</i>	<i>2,919,692</i>	<i>341,919</i>	<i>13.26%</i>
CAPITAL							
General Fund							
3100 Superior Court	60,723	58,452	5,348	-	12,000	12,000	0.00%
3170 Drug Courts Grant	-	-	2,247	-	-	-	0.00%
<i>Total Superior Court Capital</i>	<i>60,723</i>	<i>58,452</i>	<i>7,595</i>	<i>-</i>	<i>12,000</i>	<i>12,000</i>	<i>0.00%</i>
TOTAL SUPERIOR COURT	2,030,055	2,377,600	2,481,783	2,577,773	2,931,692	353,919	13.73%

2001 Funding Sources

Intergov'tl Revenues	341,918
Charges for Services	228,400
Other	30,000
General Fund	2,294,374
Operating Trans - Drug Fund	25,000
<hr/>	
Total Funding	2,894,692

Intergovernmental Revenue

The court receives reimbursement from the state for county-paid criminal witness fees in cases where the defendant is found guilty and for county employee salaries, benefits and administrative costs associated with court proceedings relating to the recovery and enforcement of child support. Also money received from the state based on the Becca Bill funding model.

Charges for Services

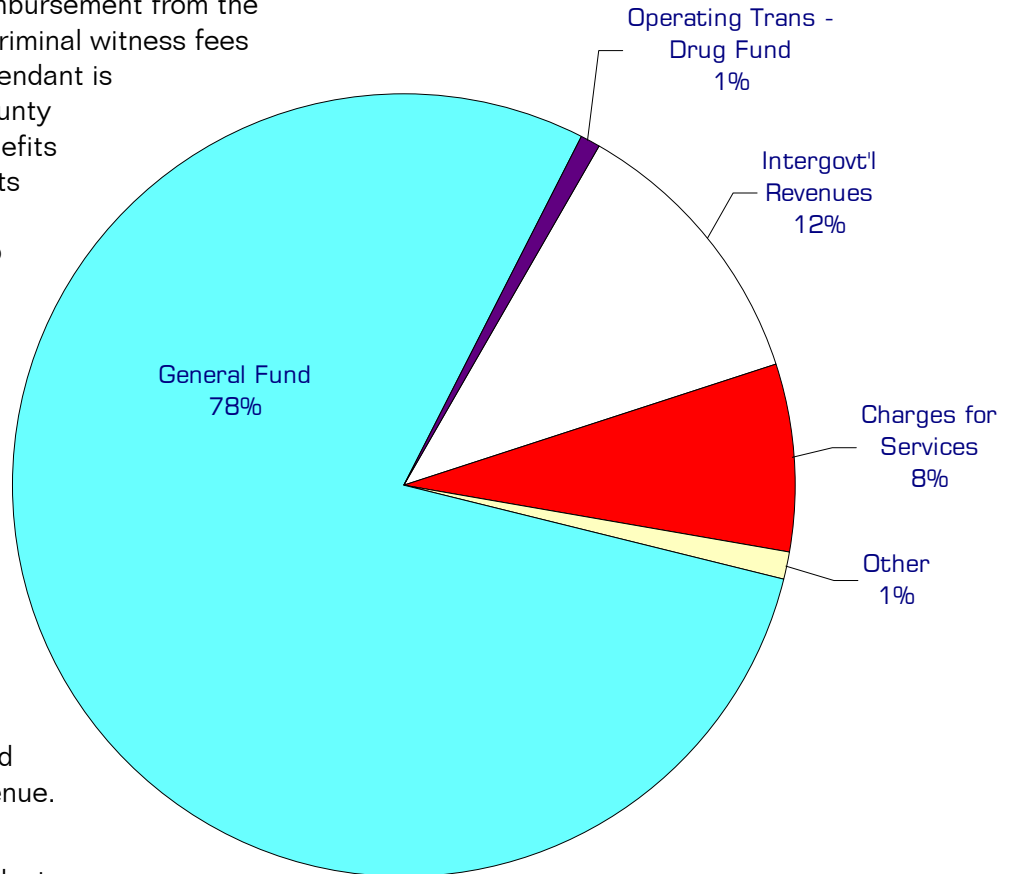
The Superior Court charges for filings and various other services. Judicial fines and forfeits are not included as Superior Court revenue.

Other

The Superior Court collects a surcharge on marriage licenses, as well as revenue from other miscellaneous sources.

General Fund

Undesignated General Fund resources.



Performance / Activity Measures

	Actual 1997	Actual 1998	Actual 1999	Projected 2000	Projected 2001
% of courtroom work civil	40%	56%	56%	56%	Unavailable
% of courtroom work domestic	14%	10%	10%	10%	Unavailable
% of courtroom work criminal	46%	34%	34%	34%	Unavailable
Hearings/trials per year	18200	20717	17924	19828	21810
Time to trial once ready, civil	9-12 months	9-12 months	9-12 months	9-12 months	9-12 months
Facilitator contacts	8,052	unknown	Can't count	Can't count	Unavailable
Microfilm backlog (pages)	827,200	55,000	-	-	-
Sick leave/FMLA hours taken	1,400	2,111	1,060	1,100	1,100
Pages in microfilm inventory	6,872,800	7,557,000	8,507,400		
Cases filed	9,592	10,546	9,595	9,584	9,600
Documents filed	152,304	179,880	176,066	186,156	195,463
Computer records entered	867,396	1,036,992	1,268,040	1,304,208	1,330,300
Arbitrations filed		61	73	66	65
District Court AH & DV petitions filed		316	427	392	400
Superior Court AH & DV petitions filed		299	234	214	220
Assigned Counsel/contacts in jail		3,296	3,746	4,008	4,000
Assigned Counsel/applications denied		595	766	820	820
Assigned Counsel/cases conflicted out		346	398	552	500
JIS DV data entry (new cases/not TRO's)		299	627	614	620
Domestic mandatory mediations heard		N/A	86	85	85
Domestic settlement conferences heard		N/A	33	44	60
Agreed Divorce/Custody/Support orders		N/A			Unavailable
Domesic trials					Unavailable
Restitution received/forwarded to crime victims					Unavailable
Files checked out/in			26,437	28,290	30,000

Expenditures Summary

	Actual 1997	Actual 1998	Actual 1999	Budget 2000	Budget 2001	\$ Change 2000 to 2001	% Change 2000 to 2001
GENERAL FUND							
3100 Superior Court							
Salaries & Wages	573,858	601,681	689,348	686,060	852,995	166,935	24.33%
Benefits	106,885	110,558	124,092	119,147	161,998	42,851	35.96%
Supplies	3,074	9,228	9,001	6,530	8,530	2,000	30.63%
Other Services & Charges	254,355	403,153	394,078	503,029	537,759	34,730	6.90%
Capital Outlay	60,723	58,452	5,348	-	12,000	12,000	0.00%
<i>Total Superior Court</i>	998,895	1,183,072	1,221,867	1,314,766	1,573,282	258,516	19.66%
3140 Assigned Counsel							
Salaries & Wages	66,128	69,148	76,742	72,655	74,204	1,549	2.13%
Benefits	19,015	19,509	21,319	20,169	21,556	1,387	6.88%
Supplies	-	-	-	1,500	1,500	-	0.00%
Other Services & Charges	315,848	400,160	333,739	339,543	361,834	22,291	6.57%
<i>Total Assigned Counsel</i>	400,991	488,817	431,800	433,867	459,094	25,227	5.81%
3150 Superior Court Clerk							
Salaries & Wages	383,873	428,134	492,952	532,794	529,680	(3,114)	-0.58%
Benefits	115,722	124,202	147,308	153,526	164,507	10,981	7.15%
Supplies	22,299	42,914	22,257	22,500	22,500	-	0.00%
Other Services & Charges	66,940	68,177	69,122	76,215	77,073	858	1.13%
<i>Total Superior Court Clerk</i>	588,834	663,427	731,639	785,035	793,760	8,725	1.11%
3160 Family Court Services							
Salaries & Wages	31,872	32,792	34,119	34,464	35,196	732	2.12%
Benefits	9,208	9,369	10,033	9,641	10,360	719	7.46%
Other Services & Charges	255	123	381	-	-	-	0.00%
<i>Total Family Court Svcs</i>	41,335	42,284	44,533	44,105	45,556	1,451	3.29%
3170 Drug Courts Grant							
Other Services & Charges	-	-	19,862	-	-	-	0.00%
Capital Outlay	-	-	2,247	-	-	-	0.00%
<i>Total Drug Courts Grant</i>	-	-	22,109	-	-	-	0.00%
3180 Civil Commitments							
Other Services & Charges	-	-	29,835	-	60,000	60,000	0.00%
<i>Total Drug Courts Grant</i>	-	-	29,835	-	60,000	60,000	0.00%
TOTAL SUPERIOR COURT	2,030,055	2,377,600	2,481,783	2,577,773	2,931,692	353,919	13.73%