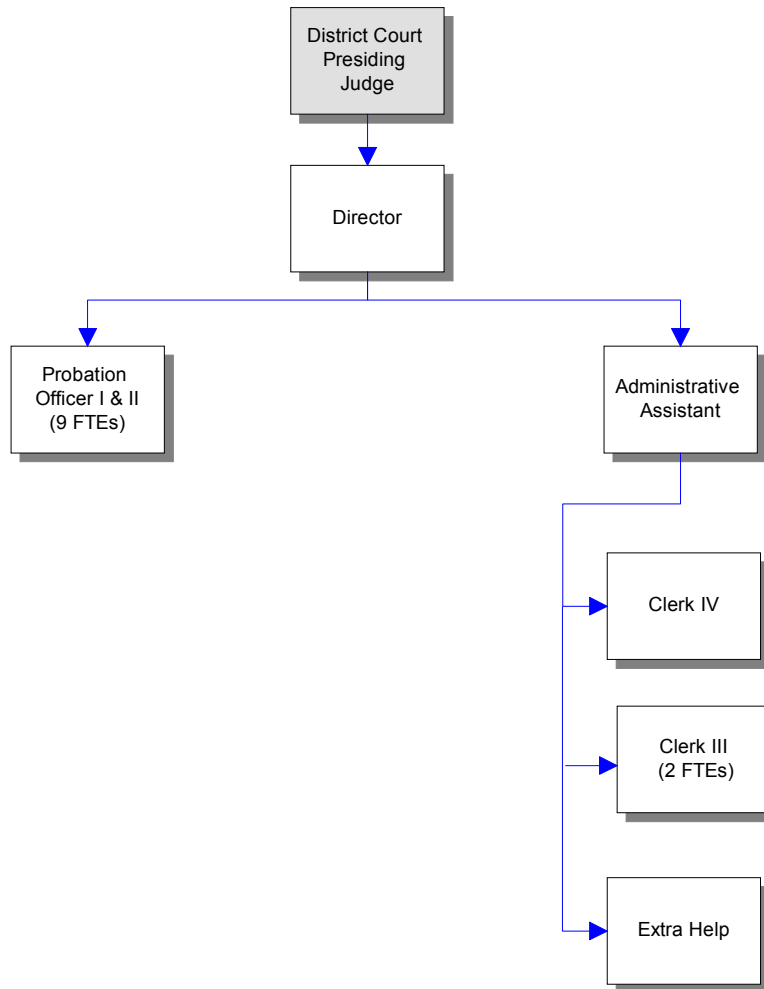


# District Court Probation



## Mission & Objectives

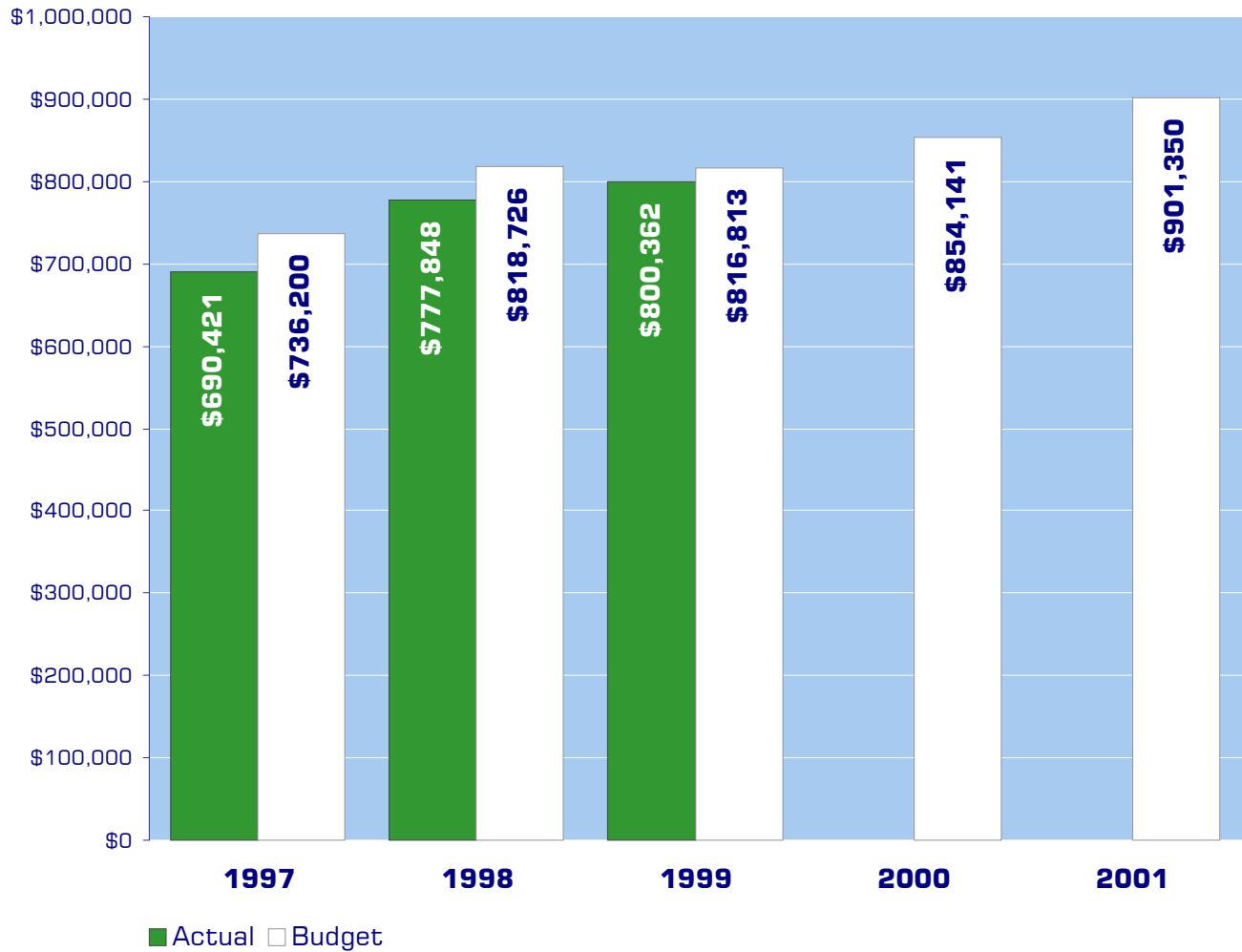
### Mission

Provide adult misdemeanor probation services to the Whatcom County District Court that holds offenders accountable for their criminal behavior. These services increase the public's safety, reduces the cost of incarcerating offenders in jail, and provides offenders the opportunity to obtain treatment that may change their behavior or addiction that contributed to their criminal behavior.

### Objectives

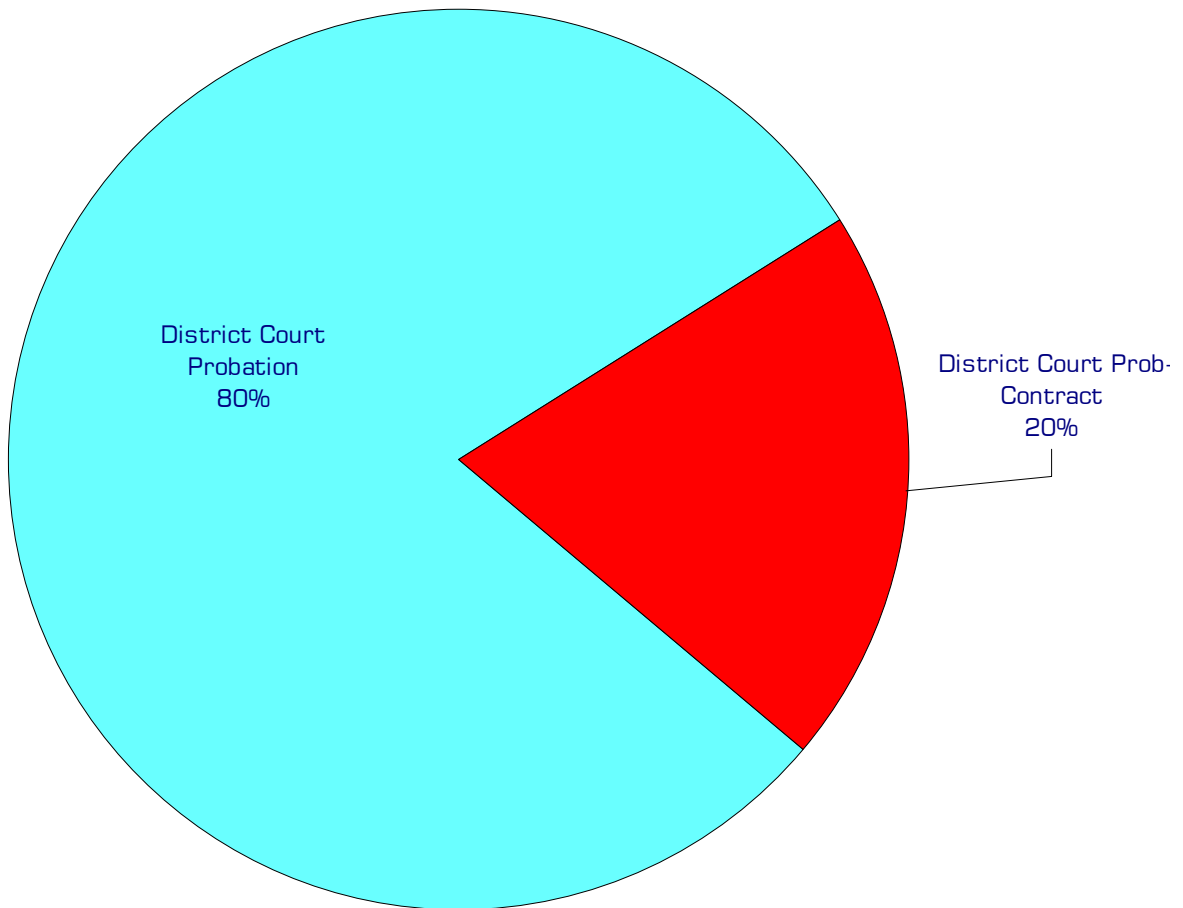
- Supervise offenders referred by the court to assure accountability to court ordered conditions.
- Coordinate use of community resources to meet sentencing conditions that may help offenders with problems that contributed to their offense. From a one-day sampling on July 10, 2000, the department was supervising 1,242 offenders attending treatment. Treatment costs are paid for by the offenders, his or her insurance or indigent funds from the state.
  - 88% Alcohol/Drug Treatment
  - 11% Domestic Violence
  - 1% Mental Health
- Target offenders with the highest risk to the community and reduce probation officer caseloads to a more reasonable level.
  - A. Assign probation officers to supervision units (Intensive, High, and Minimum).
  - B. Use standardized risk assessment adopted by the Misdemeanant Corrections Association as the primary tool in determining level of supervision.
  - C. Control the number of offenders assigned to the Intensive supervision unit with a targeted caseload of 50 offenders per probation officer. Increase frequency and type of contacts with this population.
  - D. Complete re-risk assessments on offenders in the High and Intensive unit approximately every six months so offenders with good performance can be moved to the Minimum supervision unit if possible.
  - E. Reduce probation officer caseloads in the High (includes intake) unit to 100 cases. This would reduce delays in assessment and treatment. Caseloads of 100 were recommended in the 1995 Capacity Study, Offender Placements in Washington State, Christopher Murray & Associates and M. M. Bell, Inc.

# Expenditure Trends



*NOTE: Capital expenditures and interfund operating transfers are not shown to more accurately reflect ongoing operational costs.*

# 2001 Budget by Program



*NOTE: Capital expenditures are not shown to more accurately reflect ongoing operational costs.*

# Program Summary

	Actual 1997	Actual 1998	Actual 1999	Budget 2000	Budget 2001	\$ Change 2000 to 2001	% Change 2000 to 2001
<b>OPERATIONS</b>							
<b>General Fund</b>							
1310 Dist Court Probation	589,356	661,982	688,714	699,391	721,720	22,329	3.19%
1312 Dist Court Prob- Contract	101,066	115,866	111,648	154,750	179,630	24,880	16.08%
<i>Total Dist Ct Probation Operations</i>	690,422	777,848	800,362	854,141	901,350	47,209	5.53%
<b>CAPITAL</b>							
<b>General Fund</b>							
1312 Dist Court Prob- Contract	25,159	19,546	2,549	-	-	-	0.00%
<i>Total Dist Court Probation Capital</i>	25,159	19,546	2,549	-	-	-	0.00%
<b>TOTAL DIST COURT PROBATION</b>	715,581	797,394	802,911	854,141	901,350	47,209	5.53%

# 2001 Funding Sources

General Fund	1,350
Adult Probation Service Fee	500,000
Intergovernmental Services	400,000
<hr/>	
Total Funding	901,350

### General Fund

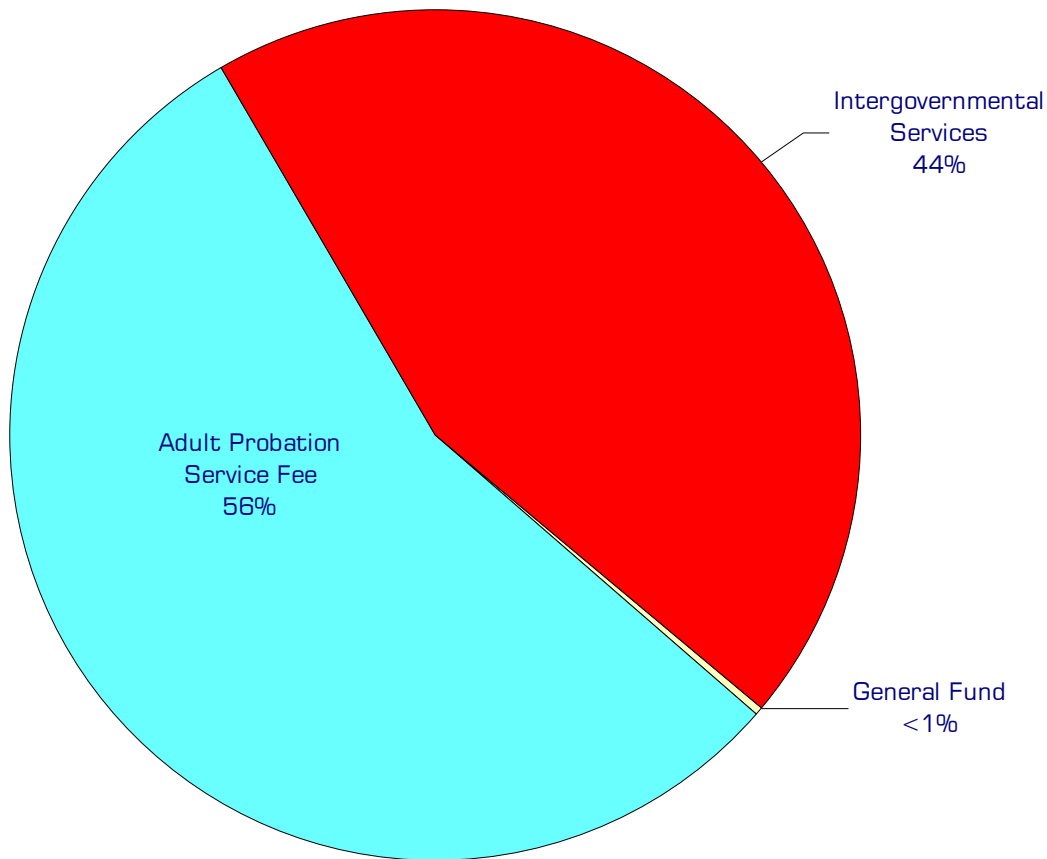
Undesignated General Fund resources.

### Adult Probation Service Fee

Services fees are paid by adult probationers to cover part of the cost of their supervision.

### Intergovernmental Services

Revenue received from local cities to handle adult probation cases.



# Performance / Activity Measures

	Actual 1997	Actual 1998	Actual 1999	Projected 2000	Projected 2001
Average Caseload per Probation Officer	255	258	287	279	225

# Expenditures Summary

	Actual 1997	Actual 1998	Actual 1999	Budget 2000	Budget 2001	\$ Change 2000 to 2001	% Change 2000 to 2001
<b>GENERAL FUND</b>							
1310 District Court Probation							
Salaries & Wages	424,641	439,460	462,457	471,332	474,984	3,652	0.77%
Benefits	113,857	118,853	119,766	116,662	124,211	7,549	6.47%
Supplies	6,377	6,514	9,007	9,400	10,400	1,000	10.64%
Other Services & Charges	44,481	97,155	97,484	101,997	112,125	10,128	9.93%
<i>Total District Court Probation</i>	<i>589,356</i>	<i>661,982</i>	<i>688,714</i>	<i>699,391</i>	<i>721,720</i>	<i>22,329</i>	<i>3.19%</i>
1312 District Court Probation- Contract							
Salaries & Wages	75,964	77,821	73,690	106,043	120,047	14,004	13.21%
Benefits	19,694	20,714	20,062	28,932	32,808	3,876	13.40%
Supplies	597	5,008	1,673	2,000	2,000	-	0.00%
Other Services & Charges	4,811	12,323	16,223	17,775	24,775	7,000	39.38%
Capital Outlay	25,159	19,546	2,549	-	-	-	0.00%
<i>Total District Court Prob.- Contract</i>	<i>126,225</i>	<i>135,412</i>	<i>114,197</i>	<i>154,750</i>	<i>179,630</i>	<i>24,880</i>	<i>16.08%</i>
<b>TOTAL DISTRICT CT. PROB.</b>	<b>715,581</b>	<b>797,394</b>	<b>802,911</b>	<b>854,141</b>	<b>901,350</b>	<b>47,209</b>	<b>5.53%</b>