

08/21/19

Attached please find the parking map (first map) for the area adjacent to the Gooseberry Point terminal.

We would like to thank Lummi Commercial Company for their gracious offer to allow Island residents to utilize this area for dry dock.

**IMPORTANT: The parking areas circled in purple on the first map are only available September 6th thru September 25th. Any vehicle parked in these spots prior to September 6th or after September 25th will be towed with no additional notice and fully at the owner's expense. No exceptions.**

**IMPORTANT: The parking areas circled in orange on the first map are only available September 7th thru September 24th. Any vehicle parked in these spots prior to September 7th or after September 24th will be towed with no additional notice and fully at the owner's expense. No exceptions.**

**We are able to open the purple area early and utilize four additional disabled parking spots due to the fact that we have no capital work on the docks this year.**

There are no changes to Lummi View Dr. or Emma Rd. parking areas (second map).

Thank you,



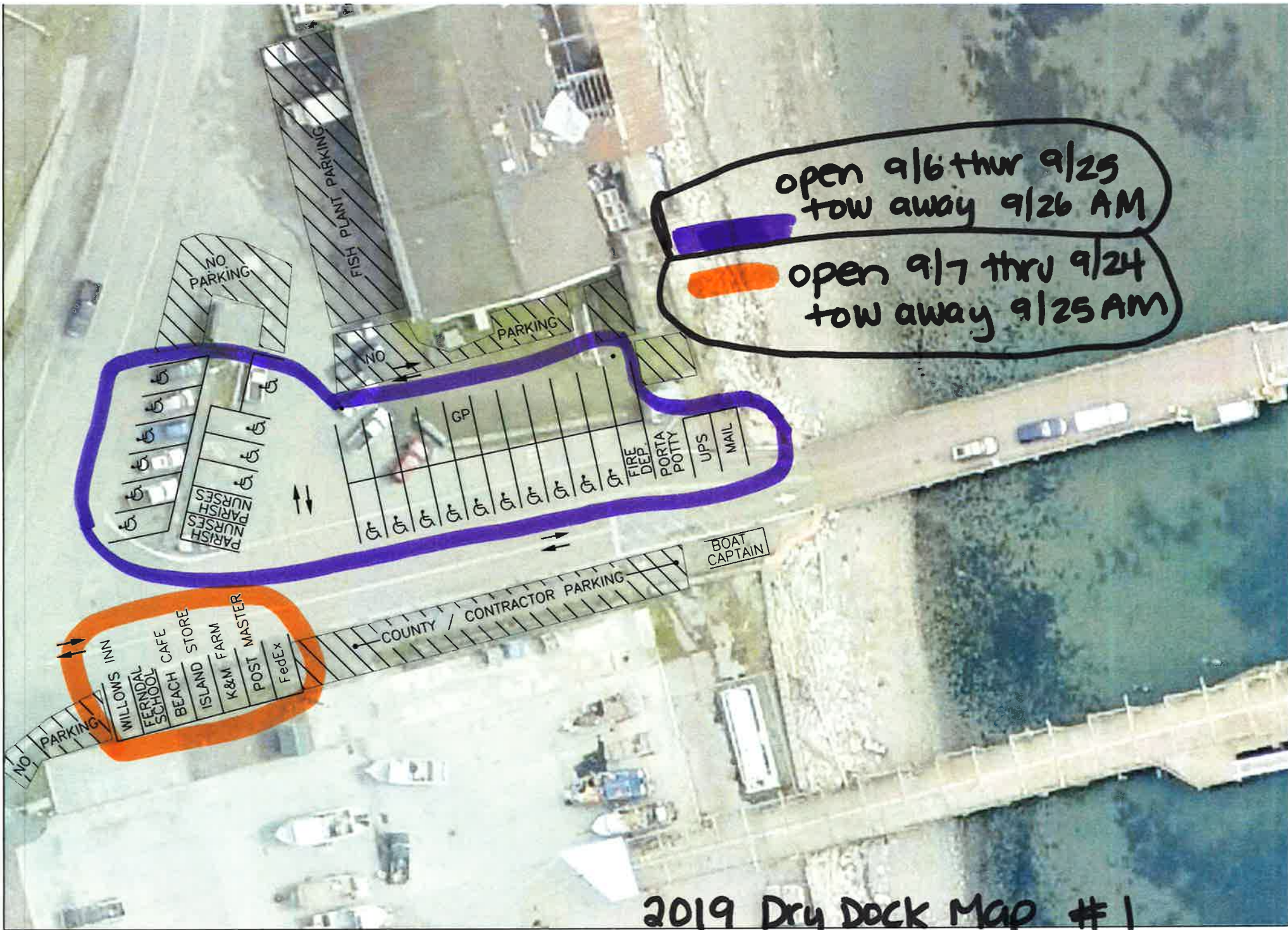
Lummi Island Ferry

322 North Commercial Street, Suite 210  
Bellingham, Washington 98225

(360) 778-6200 Main

(360) 778-6201 Fax

Disclaimer: Public documents and records are available to the public as required under the Washington State Public Records Act (RCW 42.56). The information contained in all correspondence with a government entity may be disclosable to third party requesters under the Public Records Act.



2019 Dry Dock Map # 1





NOT TO SCALE

PARKING PLAN - 2019  
 WHATCOM CHIEF FERRY  
 WHATCOM COUNTY PUBLIC WORKS

- TOW AWAY ZONE
- AUTHORIZED PARKING
- SEE EXHIBIT AA FOR DETAIL PARKING

2019 Dry Dock Map #2